

BRIDGING the GAP



What can we do to
make a difference?

CE Team- What We Do

BRIDGING the GAP



What can we do to
make a difference?

Family Support

Offering comprehensive workshops for participants to learn and practice techniques to help build emotional resources and provide support to individuals facing poverty. The workshops provide concrete tools and strategies for a community to alleviate poverty.

Workshops include:

- Emotional Poverty
- Bridges Out of Poverty
- Getting Ahead in a Just-Gettin' By World
- Getting Ahead in the Workplace
- Getting Ahead While Getting Out
- Workplace Stability

Community Support

Community Film Viewing-Offering a fun, community film viewing helps open the door for individuals and families to have conversations about feelings and emotions. The film inspires compassion from an individual perspective, as well as an organizational and community perspective.

Social Support

Social Determinates of Health- SDOH are factors that correlate to the overall health of individuals. These factors can range from the neighborhood a person grows up in, where they work, to what resources are available in their community.

The purpose of SDOH screening tool is to quickly identify an individual's needs, such as housing and food insecurity, transportation, domestic violence, etc. The screening allows the provider to gain a clear understanding of what is impacting the individual. It allows the organization to immediately address all needs that may be impacting the individual's social and emotional health, as well as their physical health.

The Oklahoma State Department of Health District 9 County Health Departments utilize PRAPARE (Protocol for Responding to and Assessing Patient Assets, Risks, and Experiences).

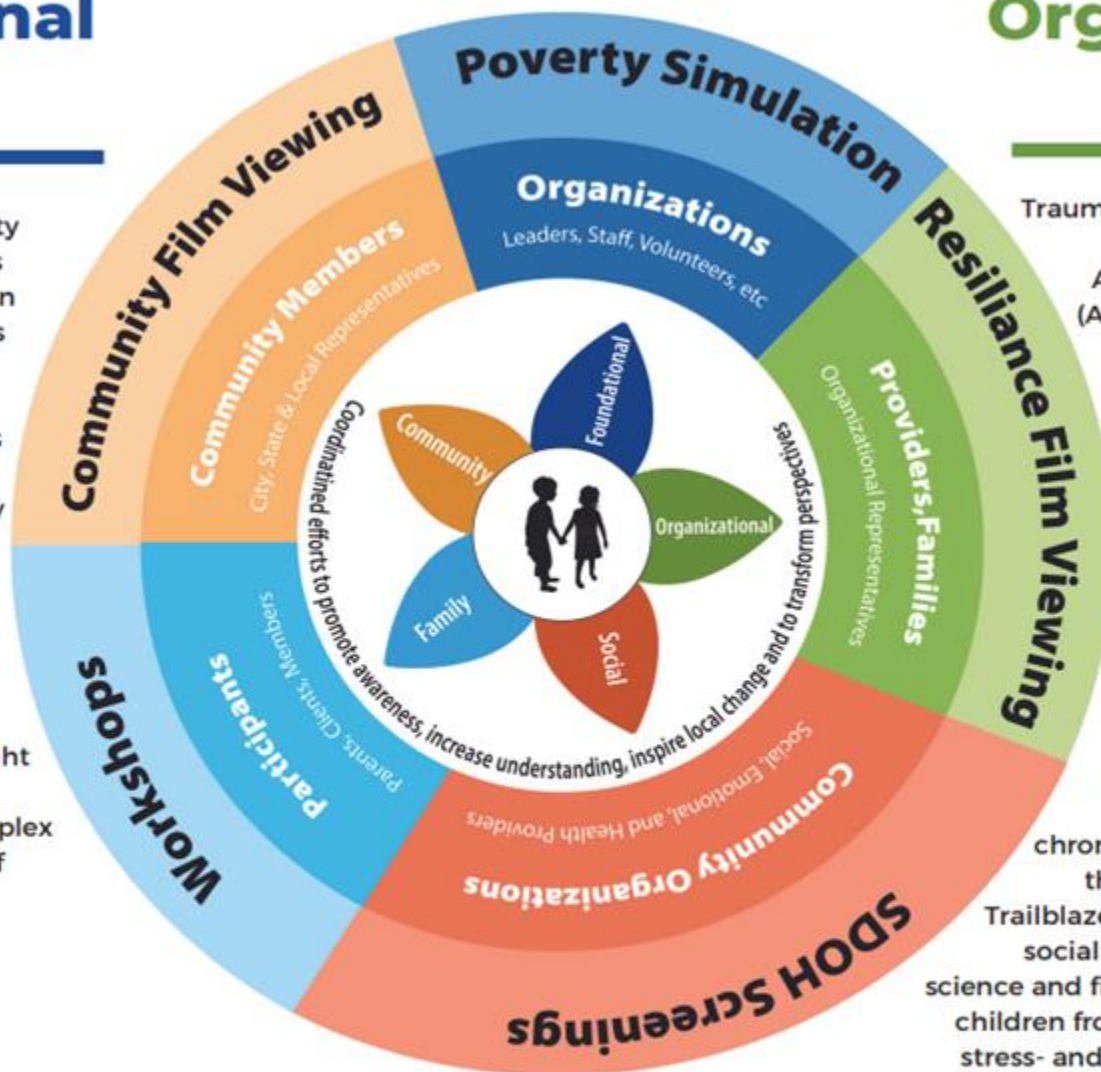


District 9
Southeast Oklahoma
County Health Departments

Atoka • Bryan • Choctaw • Coal • Latimer
LeFlore • McCurtain • Pittsburg • Pushmataha

Foundational Support

Poverty Simulation- A Poverty Simulation Workshop allows participants to gain hands-on experience to the challenges low-income individuals face daily. It also allows participants to identify areas of change that can directly impact the effects of poverty on the individual and the community. The program works by allowing participants to step into real-life situations by simulating scenarios someone facing poverty might encounter and helps the participant realize how complex and interconnected issues of poverty really are.



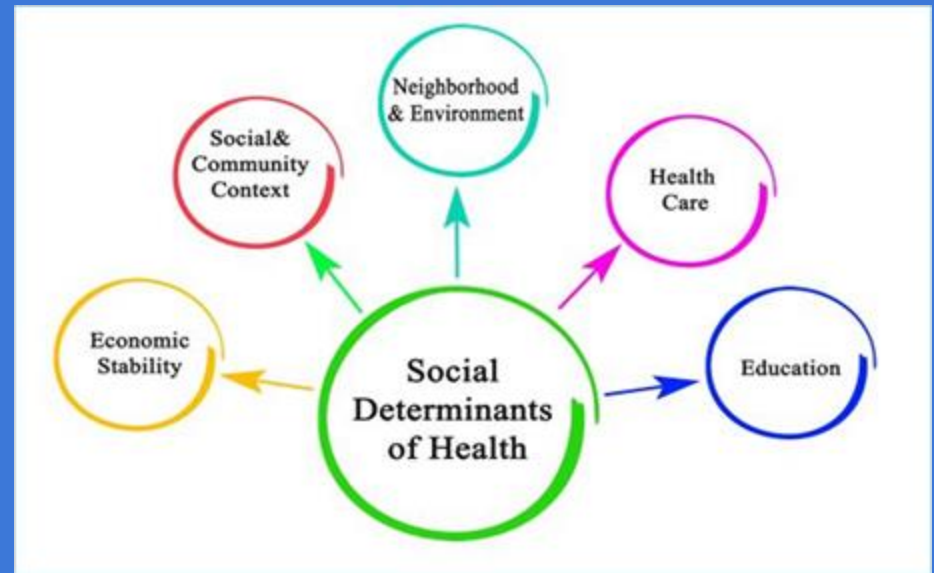
Organizational Support

Trauma Informed Training is the best way to increase awareness of Adverse Childhood Experiences (ACEs) and the effect trauma has on social, emotional and physical health. The RESILIENCE documentary provides an overview of the biology of stress and its ability to wreak havoc on the brains and bodies of children, putting them at a greater risk for disease, homelessness, prison time and early death. While the broader impacts of poverty worsen the risk, no segment of society is immune. Resilience, however, also chronicles the dawn of a movement that is determined to fight back. Trailblazers in pediatrics, education and social welfare are using cutting-edge science and field-tested therapies to protect children from the insidious effects of toxic stress- and the dark legacy of a childhood that no child would choose.

Coordinated efforts to promote awareness, increase understanding, inspire local change and transform perspectives.

SDOH :

Factors that correlate to the overall health of individuals



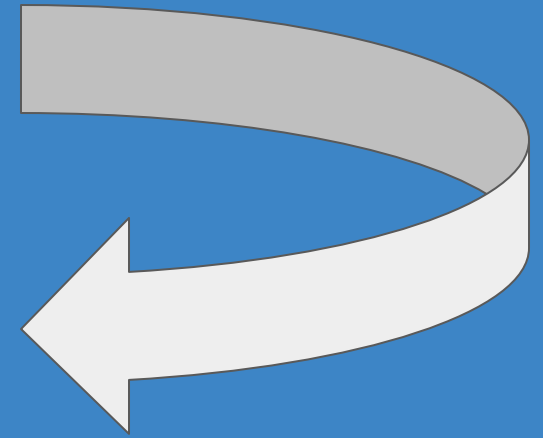
Purpose of Screening for SDOH:

- Allows provider to gain a clear picture of what is impacting the individual
- Quickly identify individual's needs
 - Housing
 - Food
 - DV etc.
- Allows an organization to immediately address ALL needs impacting the individual's:
 - Social health
 - Emotional health
 - Physical health



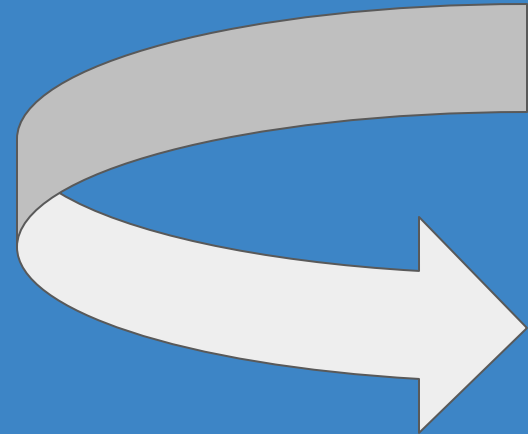
**Inequity= Injustice or
unfairness**

caused by lack of equity



Disparity= Differences

in outcome or disease burden
between different groups





Equality




Equity

PRAPARE: Wow!! Great Job!!

District 9 PRAPARE Report (View Only) : smartsheet Report Abuse Help

PRAPARE SCREENING TOOL

SUMMARY DASHBOARD



OKLAHOMA
State Department
of Health

OSDH DISTRICT 9

<https://app.smartsheet.com/b/publish?EQBCT=a526d4218a8b478fbfe78d84923c0d1>



Providing Awareness & Education Internally & Externally

Poverty Simulation:

Allows participants to:

- ❑ Step into real-life situations by simulation scenarios someone facing poverty might encounter.
- ❑ Gain hands-on experience to the challenges low-income individuals face daily.
- ❑ Identify areas of change that directly impact the effects of poverty on the individual and the community



Poverty Simulations

Completed with:

Atoka Public School

Atoka Community Simulation-multiple orgs (Choctaw Nation, DHS, CAA, etc.)

Scheduled (Fall 2023):

Leflore Co Coalition

Bryan Co.-multiple orgs



Feedback

"I learned about the effects poverty has on families and how many times it is circumstances beyond their control that results in them living in poverty."

"Myself personally having more knowledge of exactly what our county/city has to offer and possibly having in-services done to be trained on who gives what kind of assistance."

"Giving them to resources, but reaching out to see if they know how to use the resources instead of just giving the resources and expecting them to make plans to achieve them. Giving guidance and help along the way to help them know they aren't alone and we're on their side."

"I learned that each person has their own individual challenges and it's up to us to be sensitive to them and encouraging to them because we don't know what they are dealing with."



RESILIENCE Film:

Provides an overview of the biology of stress and its ability to wreak havoc on the brains and bodies of children, putting them at greater risk for:

- Disease
- Homelessness
- Prison time
- Early Death

Impacts of poverty worsen the risk, but no segment of society is immune.

Chronicles the dawn of a movement that is determined to fight back.


Film Viewings Completed in:

- Atoka County-Ministerial Alliance
- Bryan Co-Youth Services
- Choctaw County-Coalition
- Latimer Wilburton Pub Schools
- Leflore County-Save the Children

Pending Dates Scheduled (Fall 2023):

- Bryan Co Coalition
- Choctaw B&G Club; Youth Services
- Leflore Co Coalition



 **Youth Services of Bryan County, Inc**
August 4 at 10:37 AM · 🌐

Youth Services of Bryan County had the opportunity to watch the Resilience Film. The Resilience Project "reveals how toxic stress can trigger hormones that wreak havoc on the brains and bodies of children, putting them at a greater risk for disease, homelessness, prison time, and early death."

YSBC is thankful for our many partners across Oklahoma who help provide the resources we need to continue our mission. Thank you, ladies, for introducing us to this fantastic tool to better serve our residents and community.

Pictured here L to R:
Stormy Patterson, YSBC Residential Director
Shawn Young, YSBC Support Service Coordinator
Courtney Dukes, YSBC Executive Director
Autumn Cooper, THREAD (Trauma, Hope, Resilience, Education, ACEs, & Diversity) Director OSDH
Juliann Montgomery, OSDH Regional Director of Health District 9
Sarah Shores, Health Equity Specialist, OSDH District 9

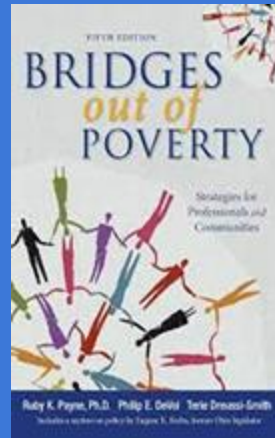
Not pictured:
Linda Brinlee-Health Equity Specialist, OSDH District 9



Workshops:

Provide concrete tools and strategies for a community to alleviate poverty.

Participants learn and practice techniques to help build emotional resources and provide support to individuals facing poverty.



- Bridges Out of Poverty
- Workplace Stability
- Getting Ahead in a Just Gettin' By World
- Getting Ahead in the Workplace
- Getting Ahead While Getting Out

Tentative Classes pending scheduling (Fall 2023):

- **Atoka School 21st Century Grant parents**
- **City of McAlester-community participants**
- **Hope House of McAlester-residents**

Community Film Viewing:

Offers a fun, community film viewing that helps open the door for individuals and families to have conversations about feelings and emotions.

The film inspires compassion from an individual perspective as well as an organizational and community perspective.

*Workbook materials-Social emotional learning

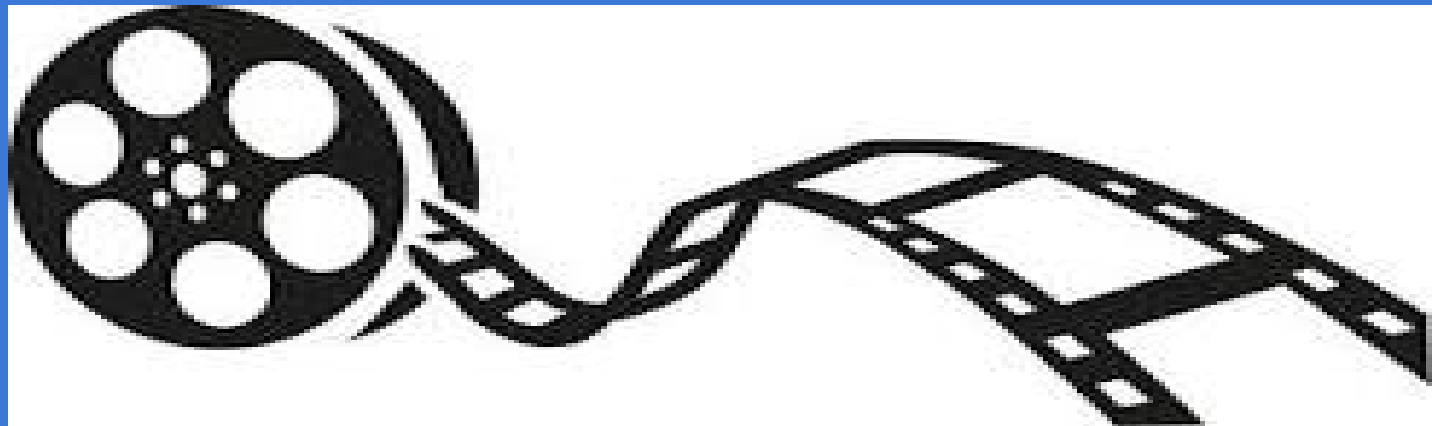
*LIVE REMOTE BROADCAST-normalize discussing feelings and emotions

Tentative Dates:

Fall 2023-Atoka & Coal

March 2024-Latimer

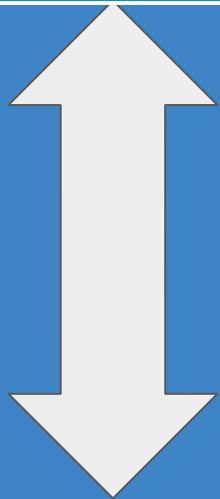
May 2024 Bryan



OK ranks
49 in
Clinical
Care



Why Bridge
the Gap?



OK ranks **44**
in Behaviors



OK ranks **46**
in Social &
Economic
Factors



Oklahoma