

Abortion Surveillance in Oklahoma

2002-2024 SUMMARY REPORT · OKLAHOMA STATE DEPARTMENT OF HEALTH

Report Date: 5/21/2025

Introduction

In 2000, the Oklahoma State Department of Health (OSDH) began its surveillance activities of Oklahoma's legally induced terminations of pregnancy (ITOP), also known as legally induced abortions. The OSDH uses these data to monitor the annual number of legal induced abortions and to describe those women receiving legal abortion services in Oklahoma. In doing so, the OSDH produces a partial accounting of pregnancies that terminate in outcomes other than a live born infant. This report follows the requirements outlined in the *Statistical Abortion Reporting Act*¹. This act outlines requirements for an Annual Abortion Report, Complications of Induced Abortion Report, and an Annual Judicial Bypass of Abortion Parental Consent Summary Report². The Annual Abortion Report includes data from the Individual Abortion Form, which physicians performing abortions are required to complete and submit electronically beginning in April, 2012³. The present report includes data collected by the Center for Health Statistics (CHS), at the OSDH for calendar years 2002-2024.

Methods

For the report years, CHS assembled data submitted to the OSDH by the facilities licensed to perform legal abortions in the state of Oklahoma. These facilities provided data on the number of abortions and the characteristics of women who obtained them.

The individual abortion form, which was implemented in April 2012, includes multiple variables about women seeking abortion and each abortion procedure including: cost,

method of payment, reason for abortion, ultrasound usage, and informed consent, among others. An updated abortion form was implemented in November, 2013, with 16 additional requirements. These requirements are presented beginning on page 14, following the summary statistics.

Court rulings and Oklahoma statute changes took place in 2022 limiting when terminations can be legally performed. Since these changes took place the number of abortions has drastically declined. No terminations were reported to the OSDH that occurred in 2023 and only 1 termination was reported to the OSDH that occurred in 2024. To address concerns regarding confidentiality of women obtaining abortions and the stability of percentages, ratios, and rates, computed statistic are suppressed when the numerator used in the calculation was less than 5. Readers will notice tables have suppressed information or tables have not been updated as any update would disclose information about the single termination that might compromise confidentiality of the individuals involved.

This document reports on overall and characteristic-specific percentages, which are based only on known values. Single-year and multi-year abortion statistics are included in the report. Abortion ratios, defined as the number of abortions per 1,000 live births, and abortion rates, defined as the number of abortions per 1,000 women in a specified age group, are provided for many demographic characteristics. Population data used to compute abortion rates were obtained from the U.S. Census Bureau. Rates and ratios for specific female characteristics were reported in aggregate form Tables 5-7 and Figures 1 and 3.

¹ HB 3075, c 163, 1, eff. November 1, 2010.

² HB 3284, c. 276, § 5, eff. November 1, 2010.

³ HB 3284, c. 276, § 4, eff. November 1, 2010.

The following age groupings were used for this report: <20, 20-24, 25-29, 30-34, and ≥35 years old. The number, ratio, and rate of abortions are presented for each age group. Abortion rates for women aged 19 or younger were based on population totals for women aged 15 to 19 years. Please note that reports prior to 2016 used population totals for women aged 10 to 19 years to calculate abortion rates for women aged 19 or younger; this change was made to align with the population used for the total abortion rate (15-44 years old). Rates for women aged 35 or older were based on the population of women aged 35 to 44 years. Rates for all women who obtained abortions were based on the population of women 15-44 years of age. Age was missing for less than 1 percent of all reported abortions.

Race was classified into five categories: White, Black, American Indian, Asian or Pacific Islander, and Other. Race was reported for over 95% of records. Ethnicity was not included in this analysis for two reasons. First, there was a large proportion of missing or unknown values (31%) in the records submitted through 2011. Second, beginning in April, 2012, data for women's ethnicity was no longer collected on the Individual Abortion Form. Therefore, the abortion numbers are presented in this report by race only.

Marital status was classified as either married (women who were married or separated) or unmarried (women who were never married, divorced, or widowed). Abortion numbers, ratios, and rates are presented by marital status. Abortion rates by marital status reflect the number of abortions per 1,000 females aged 15-44 in a specified marital group. Previously reported rates by marital status were based on the number of abortions per 1,000

females aged 15-50 years (prior to 2016 report).

Education levels of women who obtained abortions were classified as less than high school education (8th grade through 12th grade, with no diploma), high school graduate or GED⁴ completed, some college (college credit attained with no bachelor's degree), or college graduate (bachelor's degree and beyond). The number, and rate of abortions are shown by level of education. Abortion rates by educational attainment represent the number of abortions per 1,000 female population aged 18-44 years. Again, a non-standard population grouping is used here for review of general trends.

Percent distributions of abortions by previous live births and previous abortion history are presented. Previous live births were grouped into five classes: 0, 1, 2, 3, and 4 or more. Previous abortions were classified as 0, 1, 2, and 3 or more.

Measured in weeks, gestational age at the time of abortion was categorized as ≤8 weeks, 9-10 weeks, 11-12 weeks, 13-15 weeks, and ≥16 weeks. The number and percent of abortions by length of gestation are included in the report. For select characteristics (i.e., race, age, education, marital status, type of procedure, and previous live births and abortion history), gestational age is used as a summary variable.

From January 2002-March 2012, the method of abortion was classified as curettage (suction and sharp), non-surgical medical abortion (RU 486, mifepristone and misoprostol), dilation and evacuation, and "other" procedures. The number and percent of legal abortions for each abortion method are provided. In April 2012, when the new individual abortion form was

⁴ General educational development.

implemented, the method of abortion categories changed and was classified in the following categories: dilation and curettage, dilation and evacuation, RU 486, suction aspiration, and “other” procedures. In order to combine this data for the purpose of the summary statistics, these categories were combined based on their definitions. The new categories are presented in Tables 5-7 and 12, and Figure 4. The previous data classified as “sharp curettage” is included in the “dilation and curettage” category, and previous data classified as “suction curettage” is included in the “suction aspiration” category.

Summary statistics described in this report and Tables 1-7 reflect legal induced abortions to Oklahoma female residents. Information presented beginning on page 14 are limited to abortions which were performed in Oklahoma in 2024, per the requirements of the 2010 *Statistical Abortion Reporting Act*.

Limitations

These abortion data were subject to several limitations. First, abortion data reported here reflect only those reported to the OSDH. As a result, these abortion statistics may underestimate the true, but unknown, number of abortions in Oklahoma. Second, data submitted by facilities may be incomplete. Third, abortions occurring to Oklahoma residents outside the state were not submitted to OSDH for inclusion in the report.

Table 1. Number of Legal Induced Abortions by Characteristics of Women, Oklahoma Residents, 2002-2024

Characteristic	2002	2003	2004	2005	2006	2007	2008	2009	2010	2011	2012	2013	2014	2015	2016	2017	2018	2019	2020	2021	2022	2023	2024	Total
Total	6,215	6,341	6,230	6,364	6,807	6,363	6,144	6,044	5,641	4,840	4,644	4,587	4,487	4,330	3,942	4,394	4,589	4,991	4,177	4,145	898	0	1	106,174
Age (yrs.)																								
<20	1,159	1,235	1,111	1,095	1,104	1,094	1,020	1,068	866	706	704	596	606	486	393	467	455	516	425	432	103	0	*	15,641
20-24	2,151	2,210	2,180	2,218	2,447	2,245	2,089	1,998	1,848	1,674	1,542	1,484	1,427	1,443	1,238	1,352	1,377	1,522	1,314	1,429	309	0	*	35,497
25-29	1,323	1,393	1,378	1,462	1,547	1,474	1,426	1,356	1,404	1,211	1,156	1,207	1,152	1,113	1,114	1,267	1,358	1,393	1,179	1,116	226	0	*	26,255
30-34	859	890	904	895	894	837	846	874	839	667	695	742	770	768	701	773	826	899	771	650	165	0	*	16,265
≥35	670	613	651	658	754	689	714	660	641	560	538	545	523	519	491	535	567	660	484	516	94	0	*	12,082
Race																								
White	4,159	4,493	4,448	4,551	4,864	4,464	4,323	4,338	3,871	3,433	3,109	2,847	2,672	2,608	2,279	2,515	2,526	2,571	2,081	2,086	456	0	*	68,694
Black	1,143	1,138	1,147	1,256	1,304	1,318	1,168	1,063	1,054	909	839	846	813	882	808	923	992	1,083	890	901	229	0	*	20,706
American Indian	349	377	371	352	414	367	407	376	389	281	262	250	247	208	187	234	252	280	247	385	63	0	*	6,298
Asian	198	246	209	181	214	186	167	213	216	136	144	164	171	177	149	133	158	163	155	142	33	0	*	3,555
Other	366	87	55	24	11	28	79	54	111	81	290	478	579	453	516	586	653	876	781	615	117	0	*	6,840
Marital status																								
Married	1,316	1,329	1,318	1,308	1,414	1,247	1,238	1,217	1,095	915	856	865	790	811	741	925	852	923	743	753	140	0	*	20,796
Unmarried	4,899	5,012	4,912	5,056	5,393	5,116	4,906	4,827	4,546	3,925	3,788	3,720	3,696	3,518	3,200	3,465	3,732	4,059	3,430	3,383	758	0	*	85,341
*																								
<HS	1,151	1,105	1,038	1,038	1,073	1,064	932	1,011	900	683	638	609	603	446	392	487	433	594	458	410	63	0	*	15,128
HS or GED	2,551	2,611	2,571	2,520	2,765	2,448	2,534	2,407	2,083	1,920	1,795	1,753	1,691	1,695	1,564	1,678	2,107	2,047	1,687	1,919	430	0	*	42,776
Some college	1,790	1,821	1,808	1,932	1,995	1,931	1,755	1,774	1,858	1,547	1,486	1,512	1,505	1,477	1,337	1,574	1,460	1,857	1,593	1,358	288	0	*	33,658
College graduate	723	804	812	873	974	920	923	852	800	689	725	695	675	709	645	643	573	484	418	439	116	0	*	14,492
Previous live births																								
0	2,382	2,440	2,331	2,425	2,573	2,481	2,321	2,357	2,181	1,912	1,934	1,809	1,817	1,748	1,555	1,681	1,833	1,892	1,525	1,181	97	0	*	40,475
1	1,730	1,782	1,757	1,754	1,884	1,735	1,639	1,574	1,490	1,295	1,187	1,182	1,126	1,094	970	1,052	1,088	1,206	1,025	955	206	0	*	27,731
2	1,327	1,320	1,395	1,387	1,504	1,351	1,323	1,289	1,141	990	920	925	946	874	823	975	925	1,061	859	862	181	0	*	22,378
3	526	560	532	551	595	553	586	558	532	413	390	434	397	394	387	457	466	495	466	441	80	0	*	9,813
≥4	250	239	215	247	251	241	275	266	297	229	213	237	199	216	199	228	269	334	300	313	70	0	*	5,088
Previous ITOPs																								
0	3,846	4,211	3,964	4,129	4,322	3,992	3,879	3,869	3,502	2,918	3,103	3,038	3,015	2,889	2,614	3,062	3,254	3,532	2,849	2,552	410	0	*	68,950
1	1,578	1,476	1,532	1,530	1,717	1,585	1,471	1,409	1,404	1,272	989	1,036	962	959	913	887	939	982	867	839	162	0	*	24,509
2	505	435	475	470	488	513	499	481	466	433	343	335	315	306	284	285	273	307	312	232	43	0	*	7,800
≥3	286	219	259	235	280	271	295	285	269	217	209	178	190	170	123	157	115	167	145	114	19	0	*	4,203

*Cells are suppressed to maintain confidentiality.

Table 2. Number, Ratio¹, and Rate² of Legal Induced Abortions, Oklahoma Residents, 2002-2024

Year	Number	Live births ³	Ratio ¹	Population ⁴	Rate ²
2002	6,215	50,310	123.5	728,492	8.5
2003	6,341	50,874	124.6	726,158	8.7
2004	6,230	51,157	121.8	723,187	8.6
2005	6,364	51,775	122.9	722,500	8.8
2006	6,807	54,010	126.0	725,330	9.4
2007	6,363	54,956	115.8	727,495	8.7
2008	6,144	54,753	112.2	728,647	8.4
2009	6,044	54,541	110.8	732,789	8.2
2010	5,641	53,205	106.0	738,408	7.6
2011	4,840	52,252	92.6	743,114	6.5
2012	4,644	52,740	88.1	748,935	6.2
2013	4,587	53,351	86.0	756,541	6.1
2014	4,487	53,286	84.2	761,452	5.9
2015	4,330	53,132	81.5	766,566	5.6
2016	3,942	52,607	74.9	768,491	5.1
2017	4,394	50,214	87.5	768,751	5.7
2018	4,589	49,801	92.1	770,736	6.0
2019	4,991	49,143	101.6	774,815	6.4
2020	4,177	47,617	87.7	781,040	5.3
2021	4,145	48,412	85.6	786,897	5.3
2022	898	48,314	18.6	799,849	1.1
2023	0	47,895	0.0	810,519	0.0
2024*	1	47,905	0.0	810,519	0.0
Total	106,174	1,182,250	89.8	17,401,231	6.1
Percent change, 2002-2022	-85.6	-4.0	-85.0	9.8	-86.8

¹ Number of abortions per 1,000 live births

² Number of abortions per 1,000 female population aged 15-44 years

³ Final Birth Statistics, OK2SHARE, OSDH.

⁴ OK2SHARE, Vital Statistics, 2002-2024, number of females aged 15-44 years

*Preliminary 2024 data for Oklahoma resident birth counts as of 5/21/2025. Population data for 2024 uses 2023 estimates.

Table 3. Percent* of Legal Induced Abortions by Characteristics of Women, Oklahoma Residents, 2002-2024

Characteristic	2002	2003	2004	2005	2006	2007	2008	2009	2010	2011	2012	2013	2014	2015	2016	2017	2018	2019	2020	2021	2022	2023	2024	Total
Age (yrs)																								
<20	18.8	19.5	17.9	17.3	16.4	17.3	16.7	17.9	15.5	14.7	15.2	13.0	13.5	11.2	10.0	10.6	9.9	10.3	10.2	10.4	11.5	-	*	14.2
20-24	34.9	34.9	35.0	35.1	36.3	35.4	34.3	33.6	33.0	34.7	33.3	32.4	31.9	33.3	31.5	30.8	30.1	30.5	31.5	34.5	34.5	-	*	33.4
25-29	21.5	22.0	22.1	23.1	22.9	23.3	23.4	22.8	25.1	25.1	24.9	26.4	25.7	25.7	28.3	28.8	29.6	27.9	28.3	26.9	25.2	-	*	25.2
30-34	13.9	14.0	14.5	14.1	13.3	13.2	13.9	14.7	15.0	13.8	15.0	16.2	17.2	17.7	17.8	17.6	18.0	18.0	18.5	15.5	18.4	-	*	15.7
≥35	10.9	9.7	10.5	10.4	11.2	10.9	11.7	11.1	11.5	11.6	11.6	11.9	11.7	12.0	12.5	12.2	12.4	13.2	11.6	12.5	10.5	-	*	11.5
Race																								
White	66.9	70.9	71.4	71.5	71.5	70.2	70.4	71.8	68.6	70.9	67.0	62.1	59.6	60.3	57.9	57.3	55.1	51.7	50.1	50.5	50.8	-	*	63.2
Black	18.4	18.0	18.4	19.7	19.2	20.7	19.0	17.6	18.7	18.8	18.1	18.5	18.1	20.4	20.5	21.0	21.7	21.8	21.4	21.8	25.5	-	*	19.9
American Indian	5.6	6.0	6.0	5.5	6.1	5.8	6.6	6.2	6.9	5.8	5.6	5.5	5.5	4.8	4.8	5.3	5.5	5.6	5.9	9.3	7.0	-	*	6.0
Asian	3.2	3.9	3.4	2.8	3.1	2.9	2.7	3.5	3.8	2.8	3.1	3.6	3.8	4.1	3.8	3.0	3.5	3.3	3.7	3.4	3.7	-	*	3.4
Other	5.9	1.4	0.9	0.4	0.2	0.4	1.3	0.9	2.0	1.7	6.2	10.4	12.9	10.5	13.1	13.4	14.3	17.6	18.8	14.9	13.0	-	*	7.6
Marital status																								
Married	21.2	21.0	21.2	20.6	20.8	19.6	20.2	20.1	19.4	18.9	18.4	18.9	17.6	18.7	18.8	21.1	18.6	18.5	17.8	18.2	15.6	-	*	19.3
Unmarried	78.8	79.0	78.8	79.5	79.2	80.4	79.9	79.9	80.6	81.1	81.6	81.1	82.4	81.3	81.2	78.9	81.4	81.5	82.2	81.8	84.4	-	*	80.7
Education																								
<HS	18.5	17.4	16.7	16.3	15.8	16.7	15.2	16.7	16.0	14.1	13.7	13.3	13.5	10.3	10.0	11.1	9.5	11.9	11.0	9.9	7.0	-	*	13.6
HS or GED	41.1	41.2	41.3	39.6	40.6	38.5	41.2	39.8	36.9	39.7	38.7	38.4	37.8	39.2	39.7	38.3	46.1	41.1	40.6	46.5	47.9	-	*	40.7
Some college	28.8	28.7	29.0	30.4	29.3	30.4	28.6	29.4	32.9	32.0	32.0	33.1	33.6	34.1	34.0	35.9	31.9	37.3	38.3	32.9	32.1	-	*	32.1
College graduate	11.6	12.7	13.0	13.7	14.3	14.5	15.0	14.1	14.2	14.2	15.6	15.2	15.1	16.4	16.4	14.7	12.5	9.7	10.1	10.6	12.9	-	*	13.6
Previous live births																								
0	38.3	38.5	37.4	38.1	37.8	39.0	37.8	39.0	38.7	39.5	41.7	39.4	40.5	40.4	39.5	38.3	40.0	37.9	36.5	31.5	15.3	-	*	37.4
1	27.8	28.1	28.2	27.6	27.7	27.3	26.7	26.0	26.4	26.8	25.6	25.8	25.1	25.3	24.7	24.0	23.8	24.2	24.6	25.5	32.5	-	*	26.4
2	21.4	20.8	22.4	21.8	22.1	21.2	21.5	21.3	20.2	20.5	19.8	20.2	21.1	20.2	20.9	22.2	20.2	21.3	20.6	23.0	28.5	-	*	21.5
3	8.5	8.8	8.5	8.7	8.7	8.7	9.5	9.2	9.4	8.5	8.4	9.5	8.9	9.1	9.8	10.4	10.2	9.9	11.2	11.8	12.6	-	*	9.5
≥4	4.0	3.8	3.5	3.9	3.7	3.8	4.5	4.4	5.3	4.7	4.6	5.2	4.4	5.0	5.1	5.2	5.9	6.7	7.2	8.3	11.0	-	*	5.2
Previous ITOPs																								
0	61.9	66.4	63.6	64.9	63.5	62.8	63.1	64.0	62.1	60.3	66.8	66.2	67.3	66.8	66.5	69.7	71.0	70.8	68.3	68.3	64.7	-	*	65.7
1	25.4	23.3	24.6	24.0	25.2	24.9	23.9	23.3	24.9	26.3	21.3	22.6	21.5	22.2	23.2	20.2	20.5	19.7	20.8	22.5	25.6	-	*	23.1
2	8.1	6.9	7.6	7.4	7.2	8.1	8.1	8.0	8.3	9.0	7.4	7.3	7.0	7.1	7.2	6.5	6.0	6.2	7.5	6.2	6.8	-	*	7.3
≥3	4.6	3.5	4.2	3.7	4.1	4.3	4.8	4.7	4.8	4.5	4.5	3.9	4.2	3.9	3.1	3.6	2.5	3.4	3.5	3.1	3.0	-	*	3.9

*Percentages are based on the number of known values.

*Cells are suppressed to maintain confidentiality.

Table 4. Number, Ratio¹, and Rate² of Legal Induced Abortions by Characteristics of Women, Oklahoma Residents, 2022-2024

Characteristic	Number			Live births			Ratio ¹			Rate ²		
	2022	2023	2024	2022	2023	2024	2022	2023	2024	2022	2023	2024
Total	898	0	1	48,314	47,895	47,905	18.6	0.0	0.0	1.1	0.0	0.0
Race												
White	456	0	*	Estimates of births by single race groupings are no longer available from vital statistics data.			Estimates of births by single race groupings are no longer available from vital statistics data.			Population estimates of single race groupings are no longer available from the US Census Bureau.		
Black	229	0	*									
American Indian	63	0	*									
Asian	33	0	*									
Age (yrs.)												
<20	103	0	*	2,880	2,880	2,768	35.8	-	-	0.4	-	-
20-24	309	0	*	12,142	11,912	11,603	25.4	-	-	1	-	-
25-29	226	0	*	14,792	14,787	15,045	15.3	-	-	0.8	-	-
30-34	165	0	*	12,074	11,800	11,840	13.7	-	-	0.6	-	-
≥35	94	0	*	6,407	6,499	6,615	14.7	-	-	0.2	-	-
Education³												
<HS	63	0	*	6,665	6,521	6,406	9.5	-	-	0.9	-	-
HS or GED	430	0	*	15,231	15,204	15,503	28.2	-	-	2.2	-	-
Some college	288	0	*	14,183	14,071	13,679	20.3	-	-	1.2	-	-
College graduate	116	0	*	12,115	11,944	12,170	9.6	-	-	0.6	-	-
Marital Status												
Married ⁴	140	0	*	27,143	26,482	26,591	5.2	-	-	0.4	-	-
Unmarried ⁵	758	0	*	21,163	21,413	21,312	35.8	-	-	1.7	-	-

¹Number of abortions per 1,000 live births

²Number of abortions per 1,000 female population aged 15-44

³Number of abortions per 1,000 female population aged 18-44 years

⁴Married includes spouse absent

⁵Unmarried includes never married, divorced and widowed

⁶Preliminary 2024 data for Oklahoma resident birth counts as of 5/21/2025. Population data is sourced from the American Community Survey (ACS) for Education and Marital Status

Data in this table has not been updated as it may compromise confidentiality.

Table 5. Number and Percent [†] of Legal Induced Abortions by Age Group and Selected Characteristics, Oklahoma Residents, 2020-2022

Characteristic	Age group (yrs.)				
	<20	20-24	25-29	30-34	≥35
Race					
White	482 (53.8)	1,542 (54.0)	1,234 (51.8)	795 (52.7)	566 (55.1)
Black	180 (20.1)	625 (21.9)	631 (26.5)	364 (24.1)	218 (21.2)
American Indian	51 (5.7)	169 (5.9)	147 (6.2)	89 (5.9)	48 (4.7)
Asian	21 (2.3)	72 (2.5)	76 (3.2)	76 (5.0)	81 (7.9)
Other	162 (18.1)	446 (15.6)	296 (12.4)	184 (12.2)	115 (11.2)
Education					
<HS	295 (30.9)	244 (8.0)	180 (7.2)	129 (8.2)	82 (7.6)
HS or GED	472 (49.4)	1,571 (51.6)	1,068 (42.5)	590 (37.4)	330 (30.4)
Some college	179 (18.7)	1,028 (33.8)	976 (38.9)	621 (39.4)	434 (40.0)
College graduate	9 (0.9)	201 (6.6)	287 (11.4)	236 (15.0)	240 (22.1)
Marital status					
Married	29 (3.0)	296 (9.7)	503 (20.0)	431 (27.2)	377 (34.6)
Unmarried	931 (97.0)	2,753 (90.3)	2,014 (80.0)	1,153 (72.8)	713 (65.4)
Previous live births					
0	763 (86.0)	1,461 (56.5)	624 (30.5)	247 (20.0)	116 (14.1)
1	102 (11.5)	638 (24.7)	525 (25.6)	250 (20.2)	157 (19.1)
2	16 (1.8)	340 (13.2)	499 (24.4)	337 (27.3)	221 (26.9)
3	4 (0.5)	117 (4.5)	255 (12.5)	245 (19.8)	152 (18.5)
≥4	2 (0.2)	29 (1.1)	145 (7.1)	157 (12.7)	175 (21.3)
Previous ITOPs					
0	830 (93.6)	2,075 (80.3)	1,389 (67.8)	742 (60.1)	470 (57.3)
1	51 (5.8)	395 (15.3)	441 (21.5)	289 (23.4)	221 (26.9)
2	4 (0.5)	89 (3.5)	144 (7.0)	141 (11.4)	83 (10.1)
≥3	2 (0.2)	24 (0.9)	74 (3.6)	63 (5.1)	47 (5.7)
Type of Procedure					
Suction Aspiration	153 (16.6)	474 (16.0)	439 (18.0)	285 (18.6)	188 (17.7)
RU-486	632 (68.6)	2,193 (73.8)	1,754 (71.7)	1,073 (70.2)	750 (70.8)
Dilation and Curettage	81 (8.8)	178 (6.0)	154 (6.3)	108 (7.1)	85 (8.0)
Dilation and Evacuation	53 (5.8)	125 (4.2)	96 (3.9)	62 (4.1)	37 (3.5)

[†] Percentages are based on the number of known values.

Data in this table has not been updated as it may compromise confidentiality.

Table 6. Number and Percent ^y of Legal Induced Abortions by Race and Selected Characteristics, Oklahoma Residents, 2020-2022

Characteristic	Race				
	White	Black	Am. Indian	Asian	Other
Age (yrs.)					
<20	482 (10.4)	180 (8.9)	51 (10.1)	21 (6.4)	162 (13.5)
20-24	1,542 (33.4)	625 (31.0)	169 (33.5)	72 (22.1)	446 (37.1)
25-29	1,234 (26.7)	631 (31.3)	147 (29.2)	76 (23.3)	296 (24.6)
30-34	795 (17.2)	364 (18.0)	89 (17.7)	76 (23.3)	184 (15.3)
≥35	566 (12.3)	218 (10.8)	48 (9.5)	81 (24.9)	115 (9.6)
Education					
Less than HS	428 (9.3)	141 (7.0)	64 (12.8)	32 (9.9)	197 (16.5)
HS or GED	1,938 (42.1)	914 (45.3)	254 (50.6)	95 (29.3)	558 (46.7)
Some college	1,717 (37.3)	742 (36.8)	161 (32.1)	112 (34.6)	345 (28.9)
College graduate	521 (11.3)	219 (10.9)	23 (4.6)	85 (26.2)	94 (7.9)
Marital Status					
Married	877 (19.0)	220 (10.9)	82 (16.3)	146 (45.1)	226 (18.8)
Unmarried	3,738 (81.0)	1,799 (89.1)	422 (83.7)	178 (54.9)	975 (81.2)
Previous Live Births					
0	1,811 (46.8)	518 (33.0)	163 (32.3)	123 (46.2)	447 (37.2)
1	837 (21.6)	381 (24.3)	134 (26.6)	34 (12.8)	277 (23.0)
2	672 (17.4)	340 (21.6)	107 (21.2)	64 (24.1)	229 (19.0)
3	348 (9.0)	197 (12.5)	51 (10.1)	24 (9.0)	152 (12.6)
≥4	201 (5.2)	135 (8.6)	49 (9.7)	21 (7.9)	98 (8.2)
Previous ITOPS					
0	2,928 (75.7)	1,019 (64.9)	359 (71.4)	193 (72.8)	854 (71.1)
1	658 (17.0)	341 (21.7)	101 (20.1)	48 (18.1)	241 (20.1)
2	199 (5.1)	140 (8.9)	32 (6.4)	15 (5.6)	74 (6.2)
≥3	84 (2.2)	71 (4.5)	11 (2.2)	9 (3.4)	33 (2.8)
Type of Procedure					
Suction Aspiration	725 (16.3)	438 (22.4)	32 (6.5)	52 (16.5)	221 (18.7)
RU-486	3,290 (73.7)	1,281 (65.5)	384 (78.1)	235 (74.6)	838 (70.9)
Dilation and Curettage	288 (6.5)	144 (7.4)	45 (9.2)	17 (5.4)	68 (5.7)
Dilation and Evacuation	155 (3.5)	93 (4.8)	31 (6.3)	11 (3.5)	55 (4.7)

^y Percentages are based on the number of known values.

Data in this table has not been updated as it may compromise confidentiality.

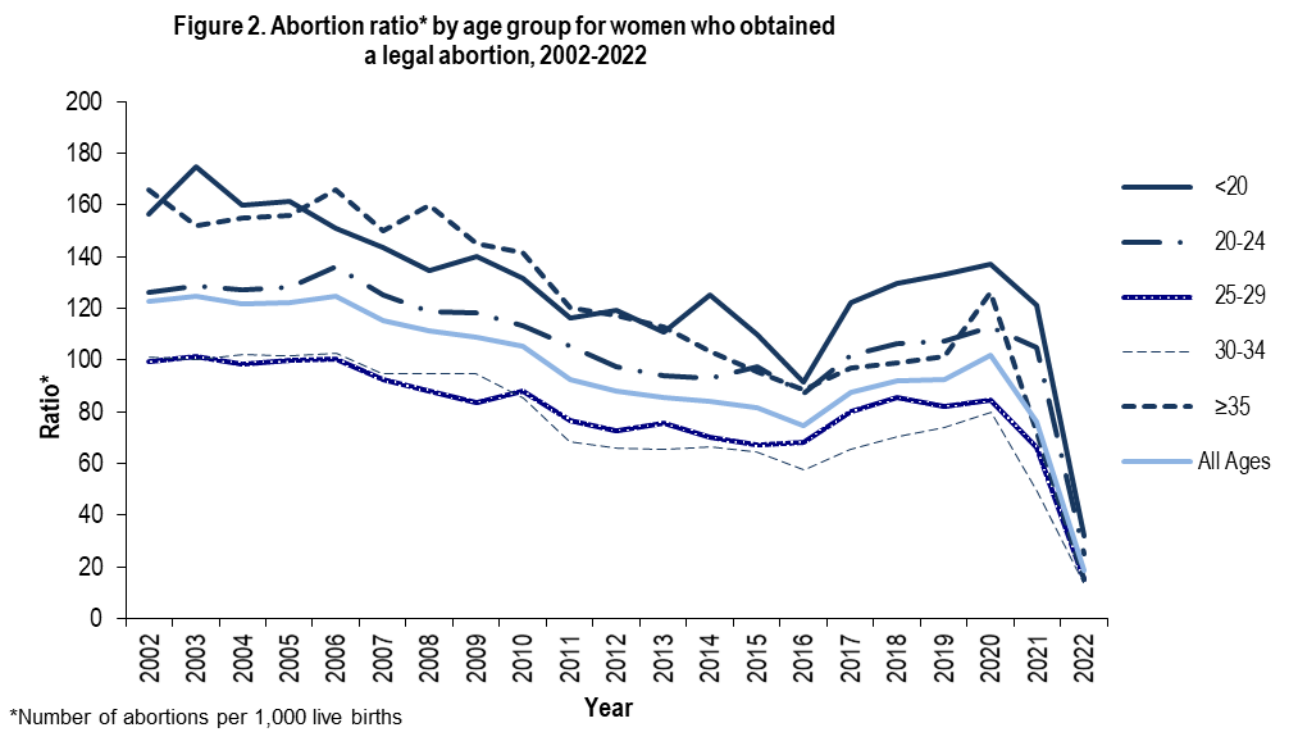
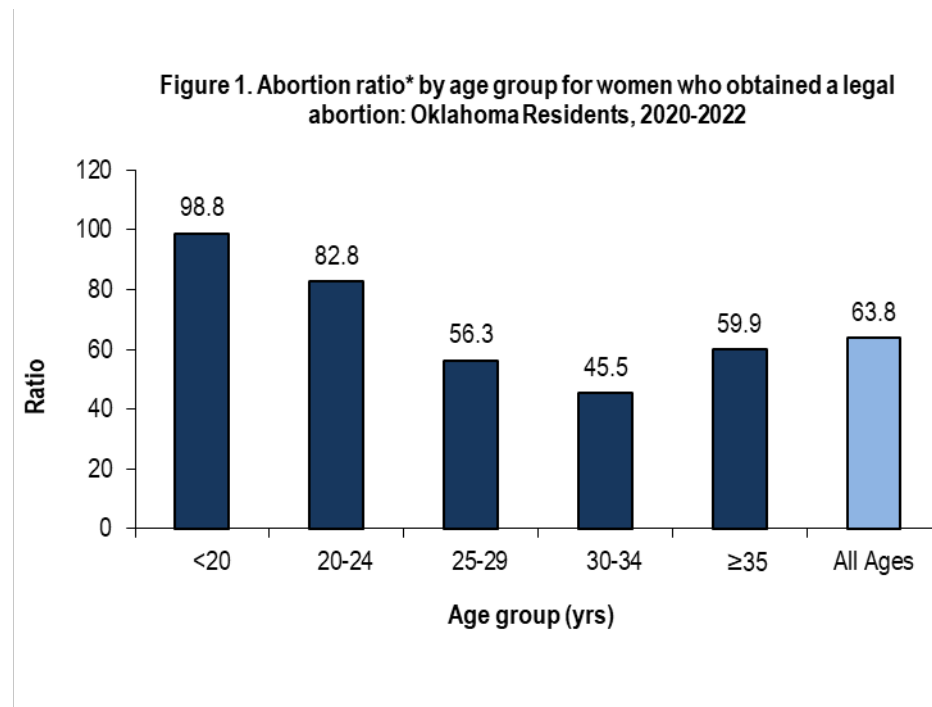
Table 7. Number and Percent [†] of Legal Induced Abortions by Gestational Age and Selected Characteristics, Oklahoma Residents, 2020-2022

Characteristic	Gestational age (wks.)				
	≤ 8 wks.	9-10 wks.	11-12 wks.	13-15 wks.	≥ 16 wks.
Race					
White	3,342 (53.7)	671 (53.6)	293 (55.4)	208 (48.7)	89 (43.0)
Black	1,381 (22.2)	319 (25.5)	133 (25.1)	118 (27.6)	62 (30.0)
American Indian	367 (5.9)	56 (4.5)	30 (5.7)	31 (7.3)	18 (8.7)
Asian	252 (4.1)	39 (3.1)	12 (2.3)	16 (3.8)	6 (2.9)
Other	883 (14.2)	168 (13.4)	61 (11.5)	54 (12.7)	32 (15.5)
Age (yrs.)					
<20	610 (9.3)	173 (12.7)	72 (12.8)	68 (14.5)	32 (14.7)
20-24	2,150 (32.7)	467 (34.4)	201 (35.8)	152 (32.4)	69 (31.7)
25-29	1,828 (27.8)	375 (27.6)	130 (23.1)	126 (26.9)	52 (23.9)
30-34	1,170 (17.8)	200 (14.7)	97 (17.3)	66 (14.1)	46 (21.1)
≥35	809 (12.3)	143 (10.5)	62 (11.0)	57 (12.2)	19 (8.7)
Education					
<HS	595 (9.1)	165 (12.2)	57 (10.2)	80 (17.0)	29 (13.4)
HS or GED	2,819 (43.1)	604 (44.6)	281 (50.4)	224 (47.7)	93 (43.1)
Some college	2,355 (36.0)	473 (35.0)	184 (33.0)	146 (31.1)	69 (31.9)
College graduate	775 (11.8)	111 (8.2)	36 (6.5)	20 (4.3)	25 (11.6)
Marital Status					
Married	1,232 (18.8)	212 (15.6)	93 (16.6)	59 (12.6)	29 (13.3)
Unmarried	5,330 (81.2)	1,145 (84.4)	468 (83.4)	411 (87.5)	189 (86.7)
Previous Live Births					
0	2,340 (42.2)	478 (46.0)	166 (39.0)	143 (40.4)	73 (40.6)
1	1,229 (22.2)	203 (19.5)	110 (25.8)	76 (21.5)	45 (25.0)
2	1,060 (19.1)	170 (16.4)	78 (18.3)	67 (18.9)	30 (16.7)
3	568 (10.2)	105 (10.1)	40 (9.4)	39 (11.0)	19 (10.6)
≥4	350 (6.3)	83 (8.0)	32 (7.5)	29 (8.2)	13 (7.2)
Previous ITOPs					
0	3,987 (71.9)	791 (76.1)	305 (71.6)	266 (75.1)	136
1	1,058 (19.1)	165 (15.9)	82 (19.3)	57 (16.1)	28
2	339 (6.1)	55 (5.3)	32 (7.5)	22 (6.2)	12
≥3	161 (2.9)	28 (2.7)	7 (1.6)	9 (2.5)	**
Type of Procedure					
Suction Aspiration	842 (13.2)	287	300 (54.0)	94 (20.0)	14
RU-486	5,367 (84.3)	905	85 (15.3)	15 (3.2)	**
Dilation and Curettage	137 (2.2)	92	158 (28.4)	164 (35.0)	52
Dilation and Evacuation	16 (0.3)	**	13 (2.3)	196 (41.8)	145

[†] Percentages are based on the number of known values.

** Cell suppressed due to value less than 5

Data in figures 1 and 2 have not been updated as it may compromise confidentiality.



Data in figures 3 and 4 have not been updated as it may compromise confidentiality.

Figure 3. Percentage of abortions by timing and age group of women, Oklahoma residents, 2020-2022

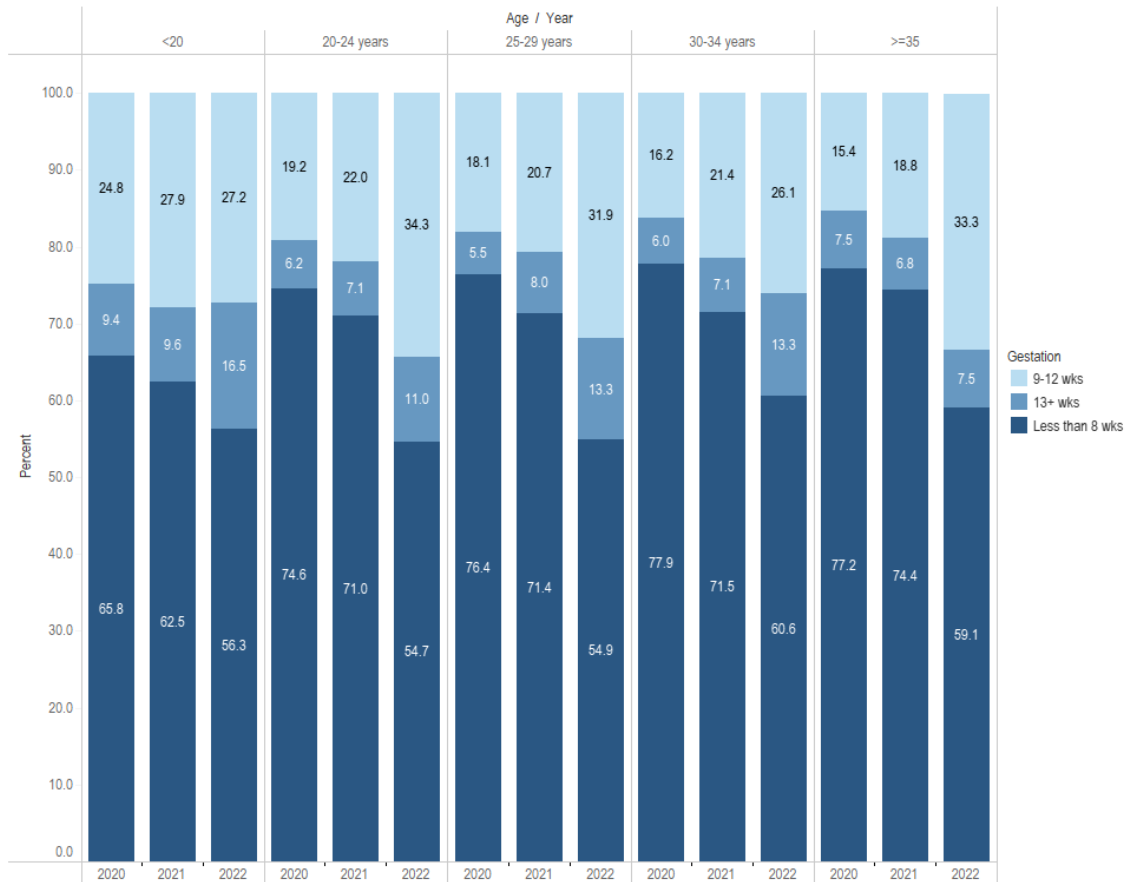
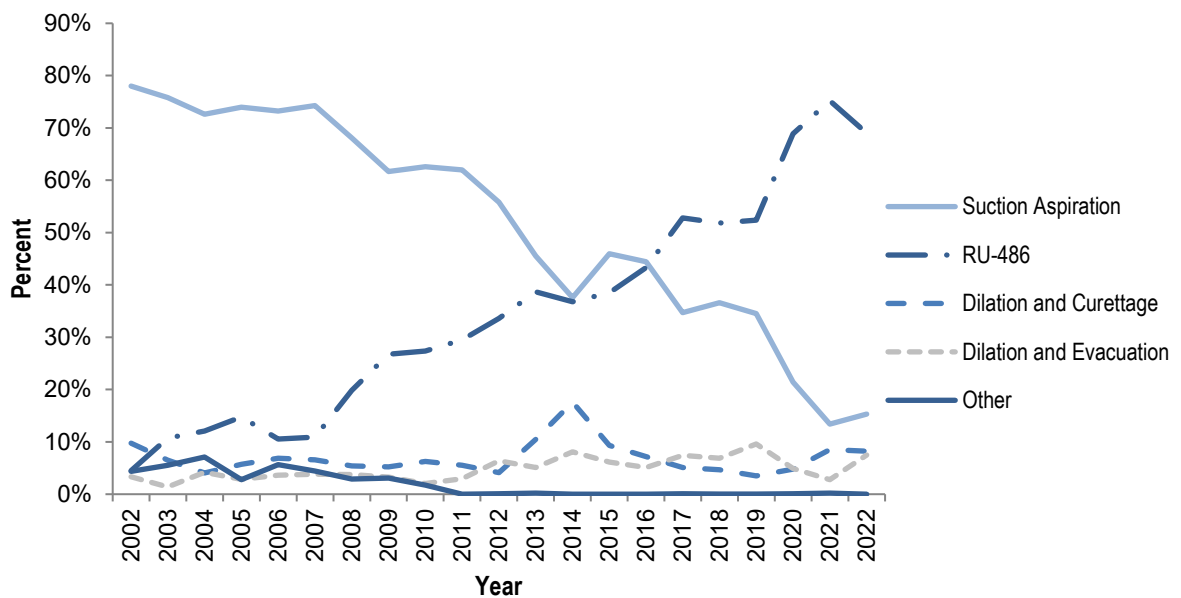


Figure 4. Percentage of abortions by method, Oklahoma Residents, 2002-2022



2010 Statistical Abortion Reporting Act Requirements Section

This section of the Annual Abortion Report outlines legal induced abortion data collected in accordance with the 2010 Statistical Abortion Reporting Act (the Act) (HB 3284, c. 276, 1. Eff. November, 1 2010). According to the Act, beginning in June 1, 2013, the Oklahoma State Department of Health (OSDH) is required to publish on its website an Annual Abortion Report that includes both new annual data and statistics for all previous calendar years for which abortion-reporting requirements have been in effect.

The Act also requires the OSDH to submit an Annual Judicial Bypass of Abortion Parental Consent Summary Report⁵. In 2024, 0 abortions were performed in Oklahoma with judicial authorization or waiver (Requirements 27 thru 30) as described on page 28.

Requirement 1: The number of induced abortions performed in the previous calendar year broken down by month and county* in which the abortion was performed.

Table 8. The number of induced abortions performed in 2024, by month

Month	Number of Abortions	Percent
January	*	*
February	*	*
March	*	*
April	*	*
May	*	*
June	*	*
July	*	*
August	*	*
September	*	*
October	*	*
November	*	*
December	*	*
Total	1	100

*Information has been suppressed to maintain the confidentiality of the individual female pursuant to 74 O.S. § 1-738m(F).

There was 1 abortion in the state of Oklahoma in 2024 reported to OSDH. However, the county of occurrence has not been included to maintain the confidentiality of the individual female pursuant to 74 O.S. § 1-738m(F).

⁵ Title 63 O.S. Section 1-738l

Requirement 2: *The number of abortions classified by: a) the state or foreign country of residence of the mother; b) the age, marital status, and race of the mother, and c) the number of years of education of the mother.*

Table 9. Selected Demographics of Mother

State of Residence	Number of Abortions	Percent
Total	1	100
Age of Mother (yrs.)	Number of Abortions	Percent
<20	*	*
20-24	*	*
25-29	*	*
30-34	*	*
>35	*	*
Total	1	100
Marital Status (5 groups)	Number of Abortions	Percent
Divorced	*	*
Married	*	*
Never Married	*	*
Separated	*	*
Widowed	*	*
Total	1	100
Race of Mother	Number of Abortions	Percent
American Indian or Alaskan Native	*	*
Asian/Pacific Islander	*	*
Black	*	*
Other	*	*
White	*	*
Total	1	100
Level of Education	Number of Abortions	Percent
8th grade or less	*	*
Some high school	*	*
High school graduate or GED completed	*	*
Some college credit	*	*
Bachelor's degree (e.g. BA, AB, BS)	*	*
Post grad work	*	*
Total	1	100

*Cells are suppressed to maintain confidentiality.

Requirement 3: The number of abortions classified by: a) the number of previous pregnancies of the mother; b) previous live births to the mother, and c) previous miscarriages, and d) previous induced abortions.

Table 10. Number of abortions by previous pregnancies, previous live births, previous miscarriages, and previous induced abortions

Previous Pregnancies	Number of Abortions	Percent
0	*	*
1	*	*
2	*	*
3	*	*
4	*	*
5 or more	*	*
Total	1	100
Previous Live Births		
0	*	*
1	*	*
2	*	*
3	*	*
4 or more	*	*
Total	1	100
Previous Miscarriages		
0	*	*
1	*	*
2	*	*
3 or more	*	*
Total	1	100
Previous Abortions		
0	*	*
1	*	*
2	*	*
3 or more	*	*
Total	1	100

*Cells are suppressed to maintain confidentiality.

Requirement 4: The number of abortions by week of gestational age.

Table 11. Gestational Age (weeks)

Gestational age (wks.)	Number of Abortions	Percent
Less than 8 wks.	*	*
9-10 wks.	*	*
11-12 wks.	*	*
13-15 wks.	*	*
16-20 wks.	*	*
21 wks.	*	*
Total	1	100

*Cells are suppressed to maintain confidentiality.

Requirement 5: The number of abortions performed by each reported method.

Table 12. Abortion Method

Method	Number of Abortions	Percent
Dilation and Curettage	*	*
Dilation and Evacuation	*	*
RU 486	*	*
Suction Aspiration	*	*
Other	*	*
Total	1	100

*Cells are suppressed to maintain confidentiality.

Requirement 6: The number of abortions resulting in an infant born alive; of these, the number of cases in which life sustaining measures were taken; and a statistical summary of the length of survival of such infants.

Table 13. Life Sustaining Measures

Life Sustaining Measures	Number of Abortions
Infants Born Alive	0
<i>Cases Life Sustaining Measures Taken</i>	<i>Not Applicable</i>
<i>Length of Survival of Infants</i>	<i>Not Applicable</i>

Requirement 7: The number of cases in which anesthesia was administered to the mother and the number of each type of anesthesia.

Table 14. Anesthesia Usage – Mother

Anesthesia Use	Number of Abortions	Percent
Yes	*	*
<i>Local</i>	*	*
<i>MAC</i>	*	*
<i>Mild / Moderate Sedation (unspecified)</i>	*	*
<i>Versed and Fentanyl</i>	*	*
No	*	*

*Cells are suppressed to maintain confidentiality.

Requirement 8: *The number of cases in which anesthesia was administered to the unborn child, and the number of each type of anesthesia and of each method of administration.*

Table 15. Anesthesia Usage – Fetus

Anesthesia Use	Number of Abortions	Percent
Yes	*	*
No	*	*
Total	1	100

*Cells are suppressed to maintain confidentiality.

Requirement 9: *The number of each reported method of fetal disposal.*

Table 16. Fetal Disposal Method

Fetal Disposal Method	Number of Abortions	Percent
Home	*	*
Incineration	*	*
Frozen for 30 days	*	*
Medical waste	*	*
Unknown	*	*
Total	1	100

*Cells are suppressed to maintain confidentiality.

Requirement 10: The reasons reported for the abortions, and the number of times each reason was cited.

Table 17. Reasons Reported for Abortions

Reason	Frequency
Having a baby would dramatically change the life of the mother:	
Having a baby would interfere with the education of the mother:	
Having a baby would interfere with the job/employment/career of the mother:	
Mother has other children or dependents:	
Mother cannot afford the child:	
Mother is unmarried:	
Mother is a student or planning to be a student:	
Mother cannot afford child care:	
Mother cannot afford the basic needs of life:	
Mother is unemployed:	
Mother cannot leave job to care for a baby:	
Mother would have to find a new place to live:	
Mother does not have enough support from a husband or partner:	
Husband or partner is unemployed:	
Mother is currently or temporarily on welfare or public assistance:	
Mother does not want to be a single mother:	
Mother is having relationship problems:	
Mother is not certain of relationship with the father of the child:	
Partner and mother are unable to or do not want to get married:	
Mother is not currently in a relationship:	
The relationship or marriage of the mother may soon break up:	
Husband or partner is abusive to the mother or her children:	
Mother has completed her childbearing:	
Mother is not ready for a, or another, child:	
Mother does not want people to know that she had sex or became pregnant:	
Mother does not feel mature enough to raise a, or another, child:	
Husband or partner wants mother to have an abortion:	
There may be possible problem affecting the health of the fetus:	
Physical health of the mother is at risk:	
Parents want mother to have an abortion:	
Emotional health of the mother is at risk:	
Mother suffered from a medical emergency as defined in Section 1-738.1A of Title 63 of the Oklahoma Statutes:	
Mother suffered from a medical emergency as defined in Section 1-745.2 of Title 63 of the Oklahoma Statutes:	1
Mother wanted a child of a different sex:	
Abortion is necessary to avert the death of the mother:	
Pregnancy was a result of forcible rape:	
Pregnancy was a result of incest:	
Other	
<i>Other specified</i>	
Patient was asked why she is seeking an abortion, but she declined to give a reason:	

Requirement 11: *The number of abortions paid for by: a) Private Insurance; b) Public health plan; c) Medicaid; d) Private pay; or e) other.*

Table 18. Abortion Payment Method

Payment Method	Number of Abortions
Private Payment	*
Private Insurance	*
Medicaid	*
Other	*

*Cells are suppressed to maintain confidentiality.

Requirement 12: *The number of abortions in which medical health insurance coverage was under: a) a fee-for-service insurance company; b) a managed care company, or c) other.*

Table 19. Type of Medical Health Insurance

Payment Method	Number of Abortions	Percent
Fee-for-Service	*	*
Managed Care	*	*
Other	*	*
Total	1	100

*Cells are suppressed to maintain confidentiality.

Requirement 13: *A statistical summary of the fees collected.*

Table 20. Summary of Fees

Summary of Fees	Number of Abortions	Percent
\$0-500	*	*
\$501-600	*	*
\$601-700	*	*
\$701-800	*	*
\$800+	*	*
Total	1	100

*Cells are suppressed to maintain confidentiality.

Requirement 14: *Specialty area of medicine of the physician.*

Table 21. Physician Specialty Area

Physician specialty area	Number of Abortions	Percent
Obstetrics-Gynecology	*	*
General Practice	*	*
Total	1	100

*Cells are suppressed to maintain confidentiality.

Requirement 15: *The number of abortions in which ultrasound equipment was used before, during, or after the abortion, and the number of times vaginal ultrasound, abdominal ultrasound, or both were used in each of the three circumstances.*

Table 22. Ultrasound Equipment Usage

Ultrasound Equipment Usage	Number of Abortions	Percent
Before Abortion:	1	100
During Abortion:	1	100
After Abortion:	1	100
Type of Ultrasound used before abortion:		
Abdominal	*	*
Vaginal	*	*
Both Vaginal/Abdominal	*	*
Total	1	100
Type of Ultrasound used during abortion:		
Vaginal	*	*
Abdominal	*	*
Both Vaginal/Abdominal	*	*
Type of Ultrasound used after abortion:		
Vaginal	*	*
Abdominal	*	*
Both Vaginal/Abdominal	*	*

*Cells are suppressed to maintain confidentiality.

Requirement 16: *The number of abortions before which an ultrasound was performed by: a) the physician performing the abortion, b) a physician other than the physician performing the abortion, or c) other.*

Table 23. Ultrasound Performed by

The number of abortions before which an ultrasound was performed by:	Number of Abortions	Percent
The physician performing the abortion	0	
A physician other than the physician performing the abortion	0	
Other	1	100
Total	1	100

Requirement 17: *The number of abortions resulting in reported complications, and of those, how many were reported by the physician who performed the abortion, and how many were reported by another physician, the types of reported complications, and the number of each type based on data which shall be compiled and transmitted to the State Department of Health by the State Board of Medical Licensure and Supervision and the State Board of Osteopathic Examiners.*

Table 24. Complications Reported by

The number of abortions resulting in complications:	Frequency	Percent
Reported by physician who performed abortion	0	
Another physician	0	
Types of Complications		
<i>Failed termination of pregnancy (continued viable pregnancy)</i>	0	
<i>Incomplete termination of pregnancy (retained part of fetus requiring re-evacuation)</i>	0	
<i>Uterine perforation</i>	0	
<i>Infection</i>	0	
<i>Heavy bleeding/hemorrhage with estimated blood loss of greater than or equal to 500cc</i>	0	
<i>Other</i>	0	

Requirement 18: *The number of abortions resulting in the reported death of the mother.*

There were no reported deaths of mother for abortions for the 2024 reporting period.

Requirement 19: The number of females to whom the physician provided the information in subparagraph a of paragraph 1 of subsection B of Section 1-738.2 of Title 63 of the Oklahoma Statutes; of that number, the number provided by telephone and the number provided in person; and of each of those numbers, the number provided in the capacity of a referring physician and the number provided in the capacity of a physician who is to perform the abortion.

Table 25. Informed Consent: Paragraph 1, Subsection B

Was the information required by paragraph 1 of subsection B of Section 1-738.2 of Title 63 of the Oklahoma Statutes provided to the mother?	Number of Abortions	Percent
Yes	1	100
No	0	
If yes, was it provided**:		
In person:	1	100
By telephone:	0	
For telephone**, was it provided by:		
A referring physician:	0	
The physician performing the abortion:	0	
An agent of a referring physician:	0	
An agent of the physician performing the abortion:	0	
For in person**, was it provided by:		
A referring physician:	0	
The physician performing the abortion:	1	100
An agent of a referring physician:	0	
An agent of the physician performing the abortion:	0	

** Information may have been provided by more than one person or by both telephone and in-person.

Requirement 20: *The number of females to whom physicians or agents of physicians provided the information in paragraph 2 of subsection B of Section 1-738.2 of Title 63 of the Oklahoma Statutes; of that number, the number provided by telephone and the number provided in person; of each of those numbers, the number provided in the capacity of a referring physician and the number provided in the capacity of a physician who is to perform the abortion; and of each of those numbers, the number provided by the physician and the number provided by an agent of the physician.*

Table 26. Informed Consent: Paragraph 2, Subsection B

Was the information required by paragraph 2 of subsection B of Section 1-738.2 of Title 63 of the Oklahoma Statutes provided to the mother?	Number of Abortions	Percent
Yes	1	100
No	0	
Total	1	100
If yes, was it provided**:		
In person:	1	100
By telephone:	0	
For telephone**, was it provided by:		
A referring physician:	0	
The physician performing the abortion:	0	
An agent of a referring physician:	0	
An agent of the physician performing the abortion:	0	
For in person**, was it provided by:		
A referring physician:	0	
The physician performing the abortion:	1	100
An agent of a referring physician:	0	
An agent of the physician performing the abortion:	0	

** Information may have been provided by more than one person or by both telephone and in-person.

Requirement 21: *The number of females who availed themselves of the opportunity to have a copy of the printed information described in Section 1-738.3 of Title 63 of the Oklahoma Statutes mailed to them; and of that number, the number who, based on the submitted reports, did and did not obtain an abortion.*

Table 27. Printed Materials Mailed

Did the mother avail herself of the opportunity to have the printed materials described in Section 1738.3 of Title 63 of the Oklahoma Statutes mailed to her?	Frequency	Percent
Yes	1	100
No	0	
Total	1	100
If yes, the number of women who did or did not have an abortion:		
Did have an abortion:	1	100
Did not have an abortion:	0	
Total	1	100

Requirement 22: *The number of abortions performed by the physician in which information otherwise required to be provided at least twenty-four (24) hours before the abortion was not so provided because an immediate abortion was necessary to avert the death of the female, and the number of abortions in which such information was not so provided because a delay would create serious risk of substantial and irreversible impairment of a major bodily function.*

Table 28. Informed Consent and Medical Emergencies

Were the informed consent requirements of subsection B of Section 1-738.2 of Title 63 of the Oklahoma Statutes dispensed with because of a medical emergency necessitating an immediate abortion:	Number of Abortions
To avert death	1
To avert substantial and irreversible impairment of a major bodily function arising from continued pregnancy	1

Requirement 23: *The number of females to whom physicians or their agents provided the information described in subsection A of Section 1-738.8 of Title 63 of the Oklahoma Statutes; of that number: a) the number provided by telephone and the number provided in person; and of each of those numbers, the number provided in the capacity of a referring physician and the number provided in the capacity of a physician who is to perform the abortion, or by the agent of such physician, and b) the number of females who availed themselves of the opportunity to be given or mailed the materials described in Section 1-738.10 of Title 63 of the Oklahoma Statutes, and the number who did not; and of each of those numbers, the number who, to the best of the information and belief of the reporting physician, went on to obtain the abortion.*

No reports met this requirement.

Requirement 24: *The number of females to whom the information described in subsection A of Section 1-738.8 of Title 63 of the Oklahoma Statutes would have had to be provided but for a medical emergency determination; of that number, the number for whom an immediate abortion was necessary to avert the death of the female, and the number for whom a delay would have created serious risk of substantial and irreversible impairment of a major bodily function.*

No reports met this requirement.

Requirement 25: *The number of abortions performed within the scope of employment of Oklahoma state employees and employees of an agency or political subdivision of the state, the number of abortions performed with the use of public institutions, facilities, equipment, or other physical assets owned, leased, or controlled by this state, its agencies, or political subdivisions, and for each category: a. the number of abortions reported as necessary to save the life of the mother, the life-endangering conditions identified, and the number of each such condition reported, b. the number of abortions reported from pregnancies resulting from forcible rape, the number of such rapes reported to law enforcement authorities, general categories of law enforcement authorities to whom reports were made and the number made to each category, and a statistical summary of the length of time between the dates of reporting to law enforcement authorities and the dates of the abortions, and c. the number of abortions reported from pregnancies resulting from incest committed against a minor, the number of perpetrators of incest in such cases reported to law enforcement authorities, general categories of law enforcement authorities to whom reports were made and the number made to each category, and a statistical summary of the length of time between the dates of reporting to law enforcement authorities and the dates of the abortions.*

Table 29. Abortion performed in the scope of a State Employee/Agency or in a Public Facility

State Employee/Agency	Number of Abortions	Percent
Yes	*	
<i>Abortion performed to save mother's life</i>	*	
<i>Pregnancy as a result of forcible rape</i>	<i>Not Applicable</i>	
<i>Pregnancies resulting from incest committed against a minor</i>	<i>Not Applicable</i>	
<i>Statistical Summary of length of time between the dates of reporting to law enforcement and the dates of the abortion</i>	<i>Not Applicable</i>	
Public Facility/Equipment	Number of Abortions	Percent
Yes	*	
<i>Abortion performed to save mother's life</i>	*	
<i>Pregnancy as a result of forcible rape</i>	<i>Not Applicable</i>	
<i>Pregnancies resulting from incest committed against a minor</i>	<i>Not Applicable</i>	
<i>Statistical Summary of length of time between the dates of reporting to law enforcement and the dates of the abortion</i>	<i>Not Applicable</i>	

*Cells are suppressed to maintain confidentiality.

Requirement 26: The number of females to a parent of whom the physician provided notice as required by Section 1-740.2 of Title 63 of the Oklahoma Statutes; of that number, the number provided personally as described in that section, and the number provided by mail as described in that section, and of each of those numbers, the number of females who, to the best of the information and belief of the reporting physician, went on to obtain the abortion.

Table 30. Parental Notice or Consent

The number of females to a parent of whom the physician provided notice as required by Section 1-740.2 of this title	Frequency	Percent
Yes	0	
No	0	
If yes, was it provided:		
In-person	0	
By Mail	0	
If the notice was provided in-person, did the female go on to have an abortion?		
Did have an abortion	0	
Did not have an abortion	0	
Total	0	
If the notice was provided by mail, did the female go on to have an abortion?		
Did have an abortion	0	
Did not have an abortion	0	
Total	0	

Requirement 27: *The number of females upon whom the physician performed an abortion without the notice to or consent of the parent of the minor required by Section 1-740.2 of Title 63 of the Oklahoma Statutes; of that number, the number who were emancipated minors and the number who suffered from a medical emergency, and of the latter, the number of cases in which a parent was notified subsequently and the number of cases in which a judicial waiver was obtained. In the case of medical emergencies in which a parent was informed subsequently, a statistical summary of the period of time elapsed before notification.*

Table 31. Procedures without notice to or consent of the parent of the minor

Procedures without notice to or consent of the parent of the minor	Frequency
The number of females upon whom the physician performed an abortion without the notice to or consent of the parent of the minor required by Section 1-740.2 of Title 63 of the Oklahoma Statutes	0
The number who were emancipated minors	0
The number who suffered from a medical emergency	0
The number of cases in which a parent was notified subsequently	0
The number of cases in which a judicial waiver was obtained	0

Requirements 28, 29 & 30: *The number of abortions performed after receiving judicial authorization to do so without parental notice and consent (28); The number of abortions performed on minors after judicial authorizations were granted because of a finding that the minor girl was mature and capable of giving informed consent (29); and; The number of abortions performed on minors after judicial authorizations were granted because of a finding that the performance of the abortion without parental notification and consent was in the best interest of the minor (30).*

Table 32. Judicial Authorization

Judicial Authorization	Frequency
The number of abortions performed after receiving judicial authorization to do so without parental notice and consent	0
The number of abortions performed on minors after judicial authorizations were granted because of a finding that the minor girl was mature and capable of giving informed consent	0
The number of abortions performed on minors after judicial authorizations were granted because of a finding that the performance of the abortion without parental notification and consent was in the best interest of the minor	0

Requirement 31-34: The number of abortions performed after which the remains of the fetus after the abortion were examined to ensure that all such remains were evacuated from the mother's body (31); The number of male children aborted and female children aborted, as determined from the examination of fetal remains after abortion (32); The number of male children aborted and female children aborted, as determined by any method other than those reported in paragraph 32 of this subsection (33); The number of instances in which the mother was informed prior to the abortion that the child to be aborted was a female (34).

Table 33. Fetal Examination

Fetal Examination	Number of Abortions	Percent
The number of abortions performed after which the remains of the fetus after the abortion were examined to ensure that all such remains were evacuated from the mother's body:		
Yes	0	
No	1	100
Total	1	100
The number of male children aborted and female children aborted, as determined from the examination of fetal remains after abortion		
Male	0	
Female	0	
Total	0	
The number of male children aborted and female children aborted, as determined by any method other than those reported in paragraph 32 of this subsection		
Male	0	
Female	0	
Total	0	
The number of instances in which the mother was informed prior to the abortion that the child to be aborted was a female:		
Instances	0	

Requirement 35 & 36: The number of abortions performed without surgery but rather as the result of the administration of chemicals (35); The number of abortions performed as reported in paragraph 35 of this subsection, in which the physician was present in the same room as the woman to whom the chemicals were administered at the time any such chemicals were first administered (36).

Table 34. Chemical Administration

Chemical Administration*	Number of Abortions
The number of abortions performed without surgery but rather as the result of the administration of chemicals (Total)	0
The number of abortions performed as reported in paragraph 35 of this subsection, in which the physician was present in the same room as the woman to whom the chemicals were administered at the time any such chemicals were first administered:	0

Requirement 37: The number of abortions performed for each hospital at which the abortionist had hospital privileges at the time of the abortion.

Table 35. Hospital Privileges

Hospital Privileges	Number of Abortions
The number of abortions performed for each hospital at which the abortionist had hospital privileges at the time of the abortion:	
Yes	*
No	*

*Cells are suppressed to maintain confidentiality.

Requirements 38-43: *The number of abortions performed at which ultrasound equipment was used before the abortion (38); The number of abortions reported in paragraph 38 of this subsection, during which the mother was under the effect of anesthesia at the time of the ultrasound (39); The number of abortions performed at which ultrasound equipment was used during the abortion (40); The number of abortions reported in paragraph 40 of this subsection, during which the mother was under the effect of anesthesia at the time of the ultrasound (41); The number of abortions performed at which ultrasound equipment was used after the abortion (42); The number of abortions reported in paragraph 42 of this subsection, during which the mother was under the effect of anesthesia at the time of the ultrasound (43).*

Table 36. Ultrasound Equipment Usage

Ultrasound Equipment Usage	Number of Abortions
Ultrasound Equipment Used Before Abortion (Total):	1
Ultrasound Equipment Used During Abortion (Total):	1
Ultrasound Equipment Used After Abortion (Total):	1
Mother under anesthesia at the time of the ultrasound:	Number of Abortions (%)
Yes	0
No	1

Requirement 44: *The mean gestational age of the fetus at the time of the abortion, as determined by ultrasounds reported.*

Table 37. Mean Gestational Age of Fetus, as determined by the ultrasound

N	Mean (wks.)	Standard Deviation
1	*	Not Applicable

*Cell is suppressed to maintain confidentiality.

Requirement 45: *The number of abortions for which no determination of probable postfertilization age was made as required by Section 1-745.5 of this title.*

Table 38: Probable Postfertilization Age

Probable Postfertilization Age	Number of Abortions	Percent
The number of abortions for which a probable postfertilization age determination was made:	1	100
The number of abortions for which probable postfertilization age was not made:	0	
Not Applicable	0	
Total	1	100

Requirement 46: The number of abortions in which the pregnant woman was told that it may be possible to make the embryonic or fetal heartbeat of the unborn child audible for the pregnant woman to hear; the number of abortions in which the pregnant woman was asked if she would like to hear the heartbeat; and the number of abortions in which the embryonic or fetal heartbeat of the unborn child was made audible for the pregnant woman to hear, using a Doppler fetal heart rate monitor.

Table 39: Fetal Heartbeat

Fetal Heartbeat	Number of Abortions	Percent
The number of abortions in which the pregnant woman was told that it may be possible to make the embryonic or fetal heartbeat of the unborn child audible		
Yes	1	100
No	0	
Not Applicable	0	
The number of abortions in which the pregnant woman was asked if she would like to hear the heartbeat		
Yes	1	100
No	0	
Not Applicable	0	
The number of abortions in which the embryonic or fetal heartbeat of the unborn child was made audible for the pregnant woman to hear		
Yes	1	100
No	0	
Not Applicable	0	

This publication was issued by the Oklahoma State Department of Health (OSDH), an equal opportunity employer and provider. A digital file has been deposited with the Publications Clearinghouse of the Oklahoma Department of Libraries in compliance with section 3-114 of Title 65 of the Oklahoma Statutes and is available for download at www.documents.ok.gov. | Issued May 2025.



OKLAHOMA