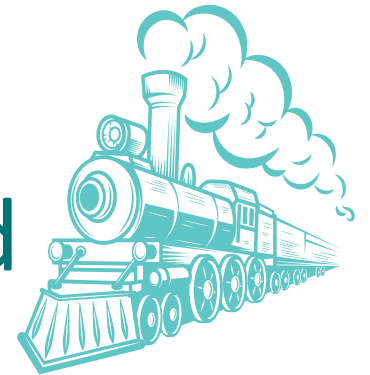




Resilient Oklahoma

Join us on
A Pathway Forward



CSAW

Trauma-Informed Care Workgroup

Create equitable access to resources and prevent & mitigate the impact of trauma in ICYF in Oklahoma

Resilient Oklahoma Website

Awareness & Education:
New Trauma-Informed Website System
Training & Events Communication Strategy
Resilient Stories, blogs, update strategy
Statewide Marketing & Communication Plan
Legislative Policy
Cross-system agency support network

Mission

To build services & supports for families in Oklahoma that prevent child abuse & neglect

Deliverable

Family Field Guide & TFSC

Focus

Community, Support, & Resources:
Build Community Capacity
Coordinate Family Support Efforts
Coordinate Prevention Strategy
Coordinate & increase resources that focus on health, safety, and well-being on ICYF

Thriving Families, Safer Children

CWS TASK FORCE
Areas of Support Risk Factors



Reduce Impact of Trauma

Prevent Child Abuse & Neglect

Support after trauma occurs
Trauma = catastrophic events, ACES, CA/N

Removing risk factors for child abuse/neglect
CA/N risk factors = poverty, trauma, mental health, substance abuse, ACES

Cross-Functional Teams

State Agencies: OSDH, OJA, ODMHSAS, OCCY, & OSDE
OSU-CIRCA
Integris Health
Creating Resilience LLC
OSU-Center for Family Resilience
Potts Family Foundation
Tulsa Parent Child Center

Trauma Informed Awareness Team
Collective Impact Community Team
Early Childhood Education Team
Family Voice Team
Co-Design Data Team
Communications & Marketing Team

Cross-functional Teams:

State Child-Serving Agencies: OKDHS, OJA, ODMHSAS, OCCY, OJA, OSDE, OSDH, ODRS
Local Community Partners
Non-profits
Businesses
Faith-based communities
Lived-Experience Experts



Resilient Oklahoma

- **Vision:** Every family lives a safe, prosperous life and has equitable access to individualized supports and services within their community to reach family goals.
- **Mission:** To build services and supports for families in Oklahoma that strengthen families, prevent child abuse and neglect and reduce the impact of trauma.
- **Values:** We recognize systemic barriers. We prioritize the voices of customers/clients, youth, families, and communities. We act to identify and eliminate barriers for families. We work collectively to solve challenges that impact families.

Priorities



Resilient Oklahoma has three priorities: co-design, equity, and collective impact. These priorities are the foundation for each of our goals.

- Co-Design
- Equity
- Collective Impact

Co- Design

- To solve deeper-rooted problems, the team will use a human-centered design (HCD) and co-design approach to problem-solving.
- By definition, HCD is a creative process, mindset, and approach to solving problems, by *centering* the needs, contexts, behaviors, and emotions of the people experiencing the problem.
- Co-design provides opportunity for equal collaboration where stakeholders have an *active role* in identifying challenges and solutions.

Equity

- Oklahoma can eliminate barriers that prevent equitable access to resources, services, and support networks in communities.
- We further recognize that additional supports are needed for children and families from diverse racial and ethnic backgrounds who have been adversely impacted by persistent poverty.

Collective Impact

- Working together in a coordinated way across sectors has proven more effective than isolated efforts by individual organizations or workgroups for generating large-scale social change.
- Resilient Oklahoma welcomes anyone who has an interest in helping families thrive, including government and nonprofit agencies, community partners, businesses, foundations, grassroots organizers, and people with lived experience.
- Through collective impact action teams, Resilient Oklahoma will align key strategies and partnerships.

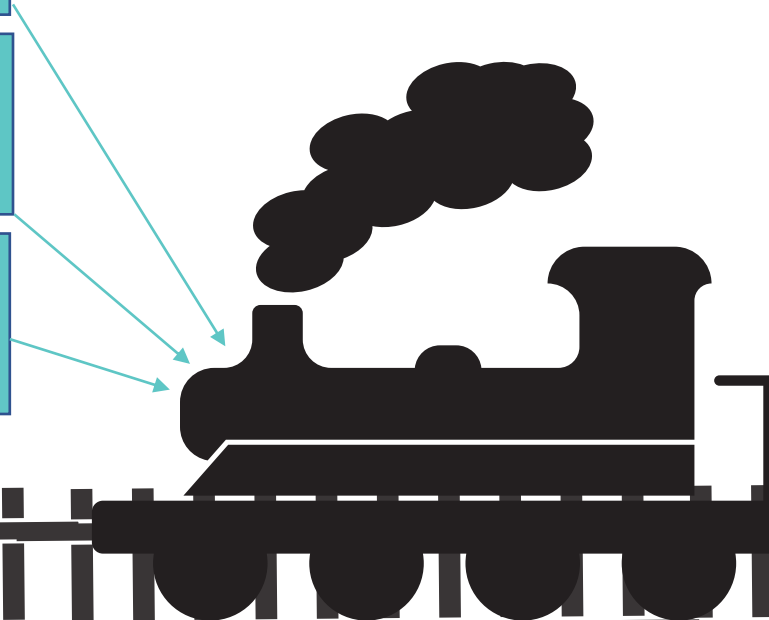
Train Engine - Resilient Oklahoma

- All teams will merge to keep the engine going and the train growing
- TFSC/CSAW/TIC Workgroup/Family Voice/Community Members

Children's State
Advisory
Workgroup

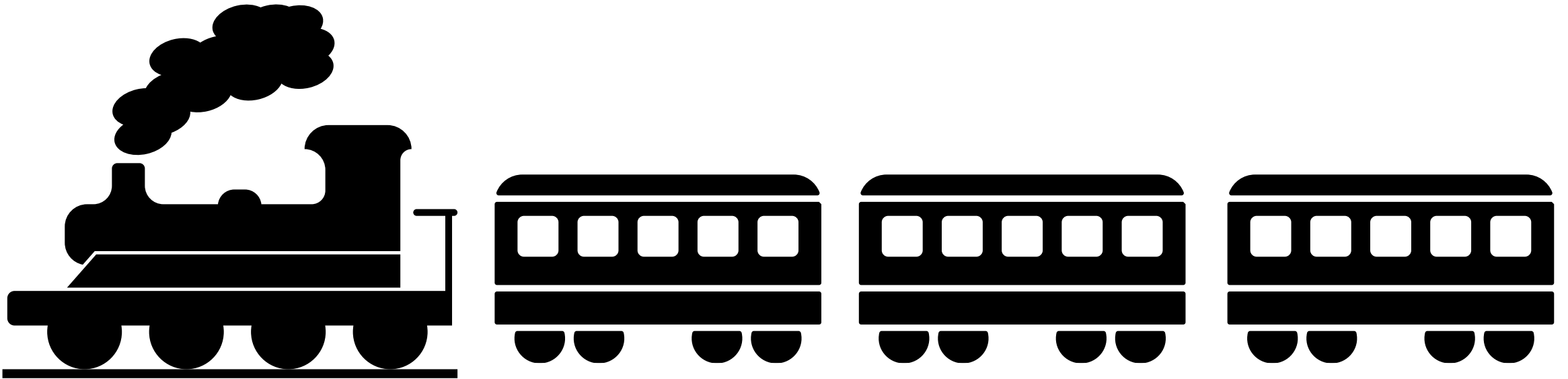
Thriving Families
Safer Children

Trauma-Informed
Care Workgroup



Train Tracks – The path our train
travels throughout Oklahoma

Train Cars – Different projects and project sponsors



Train stations – Train stops in communities

- Look at data assessments and identify community needs
- Communities decide which train cars they jump aboard
- Drive Resilient Oklahoma in communities we enter and allow them to get involved
- One car could be a partnership agreement/supporting partner. (Don't have the capacity, the project doesn't fit)

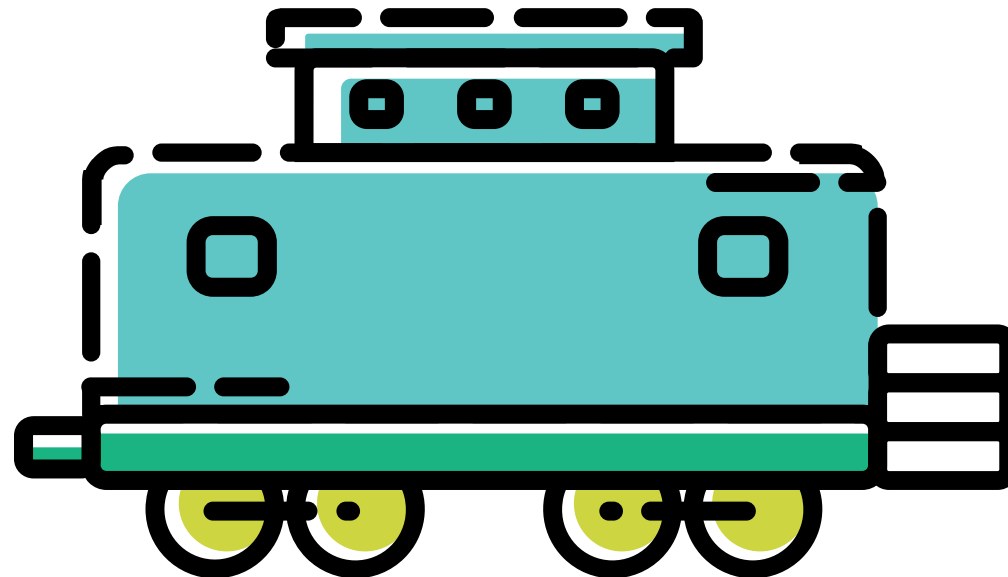


Tickets – Community members, organizations, non-profits, and businesses can get a ticket onto the train




Caboose - Special Members that stay on the train – Resilient Oklahoma Technical Assistance Hub

- Subject matter experts
- Accommodate train crew by providing T/A
- Spread awareness and mitigation of trauma in communities
- Update website content



Resilient
Oklahoma



Goals for FY23-24



Goal 1: Coordinate efforts across systems and communities

Resilient Oklahoma requires child-serving systems to work cross-functionally with local community partners, non-profits, businesses, faith-based communities, housing, legal, immigration, and people with lived experience to build community capacity and improve systems within our state. Cross-coordination will enhance efficiency, reduce duplication of effort, and maximize funding for services and resources. Efforts include consolidating the TIC and TFSC workgroups in CSAW, expanding the scope of CSAW to child and family well-being, connecting current efforts throughout the state, and actively recruiting partners and collaborators for projects.

This goal will be measured by:

- **1.1** # of number of collaborators and partners at the state-level
- **1.2** # of number of collaborators and partners for each community of focus
- **1.3** \$ amount of funding for efforts related to priorities and strategies

Goal 2: Build awareness in communities about preventing and mitigating trauma and building hope

Resilient Oklahoma strives to make trauma-informed information, help, and support accessible when needed. This goal focuses on a wide audience that includes youth, caregivers, professionals, educators, and communities throughout Oklahoma. Efforts include building a trauma informed website, conducting and coordinating trainings and community events, producing stories and blogs, and supporting trauma-informed legislation. This goal will be measured by:

- **2.1** # of hits to the trauma-informed website
- **2.2** # of training and events related to trauma, resilience and hope
- **2.3** # of stories shared on website or in public presentations that include family voice

Goal 3: Build community capacity through supports and resources

Resilient Oklahoma will build healthier families and communities by working with community liaisons and community improvement organizations to support communities by understanding data, providing technical assistance, building infrastructure, and community planning. Efforts include coordination of family support efforts, prevention strategies, resources, and supports that focus on the health, safety, and well-being of infants, youth, and families.

This goal will be measured by:

- **3.1** # of community meetings held to identify challenges & brainstorm solutions
- **3.2** # of youth and family members participating and providing feedback in community discussions, surveys, trainings, and community events
- **3.3** # of community challenges elevated and % solved at the state level

Goal 4: Enhance understanding of families and communities in the state

Resilient Oklahoma embraces an approach grounded in the analysis of multiple data sources, both quantitative and qualitative, to identify the local community's underlying strengths and needs. Efforts include reviewing local and national data currently available and gathering information directly from stakeholders. This should also include ensuring all recent community assessments, annual reports and formal recommendations from multiple sources are made available as needed.

This goal will be measured by:

- **4.1** # of engagement sessions with stakeholders and community members
- **4.2** # of individuals with lived experience engaged in interviews and listening sessions

Contact Information:

Margaret Butler, Cross Systems Coordinator

Children's State Advisory Workgroup (CSAW)

margaret.butler@occy.ok.gov

(405) 606-4904

