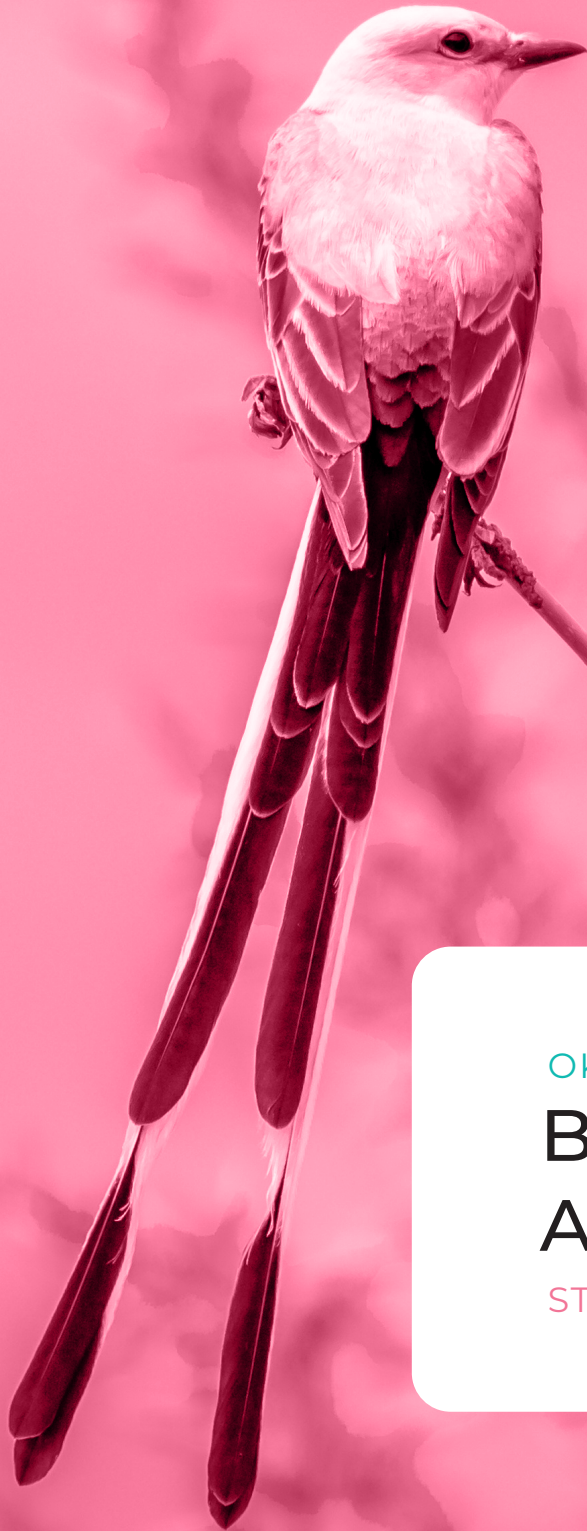




OKLAHOMA  
State Department  
of Health



OKLAHOMA

# Breast & Cervical Cancer Annual Addendum

STATE FISCAL YEAR 2023

## PURPOSE

---

The Oklahoma Breast and Cervical Cancer Act (OBCCA) was established in 1994 to implement plans to significantly decrease breast and cervical cancer morbidity and mortality in the state of Oklahoma (63 O.S. §1-554). An amendment to the OBCCA in 2013 shifted the responsibility of producing an annual report annual report from the Breast and Cervical Cancer Prevention and Treatment Advisory Committee to the Oklahoma State Department of Health (OSDH). In April 2021, Governor Stitt, signed SB136 changing the requirement from an annual report to a required report every five years, along with the addition of an annual addendum. The addendum reports updates from the Breast and Cervical Cancer Early Detection Programs in Oklahoma, including but not limited to, budgets, the number of Oklahomans served, and a personal story of an individual benefiting from the services offered by one or more program. The format for the five-year report will remain the same.

# Breast & Cervical Cancer Early Detection Programs (BCCEDP)

---

Take Charge Program  
Began 1995

Cherokee Nation  
Began 1996

Kaw Nation  
Began 2001

Oklahoma has three screening programs serving low-income, uninsured, and underinsured women.

Oklahoma's BCCEDP receives funding through a cooperative agreement with the Centers for Disease Control and Prevention ensuring Oklahomans receive enrollment in the screening program that best fits their needs. The three early detection programs work together, as well as with community organizations, helping eligible Oklahomans access and/or gain referrals to breast and cervical cancer screenings and diagnostic services and treatment.

## SCREENING SERVICES PROVIDED

---

- Clinical Breast Exam
- HPV Co-testing
- Mammogram
- Pelvic Exam
- Pap Test

## PURPOSE

---



Facilitate Early Screening



Ensure Prompt Diagnosis



Improve Access  
To Treatment

# Services Provided

SFY 2023

## Kaw Nation

**6,025**

eligible women screened since inception

**492**

breast cancer screenings

**213**

cervical cancer screenings

## Take Charge Program

**70,848<sup>1</sup>**

eligible women screened since inception

**608**

breast cancer screenings

**305**

cervical cancer screenings

## Cherokee Nation

Services provided in SFY 2023 for Cherokee Nation is currently unavailable.

1. Data variations from previous years related to switch to Med-IT and not all data was transferable.

# Funding

SFY 2023

## Kaw Nation

**\$526,062**

FEDERAL

**\$175,354**

TRIBAL

---

**\$701,416**

TOTAL

Federal BCCEDP funds require a \$3 : \$1 match in the amount of \$175,354.

## Take Charge Program

**\$893,819**

FEDERAL

**\$297,940**

STATE

---

**\$44,305**

REVOLVING

---

**\$1,236,064**

TOTAL

Federal BCCEDP funds require a \$3 : \$1 match in the amount of \$297,940.

## Cherokee Nation<sup>2</sup>

**\$836,119**

FEDERAL

**\$278,706**

TRIBAL

---

**\$1,114,825**

TOTAL

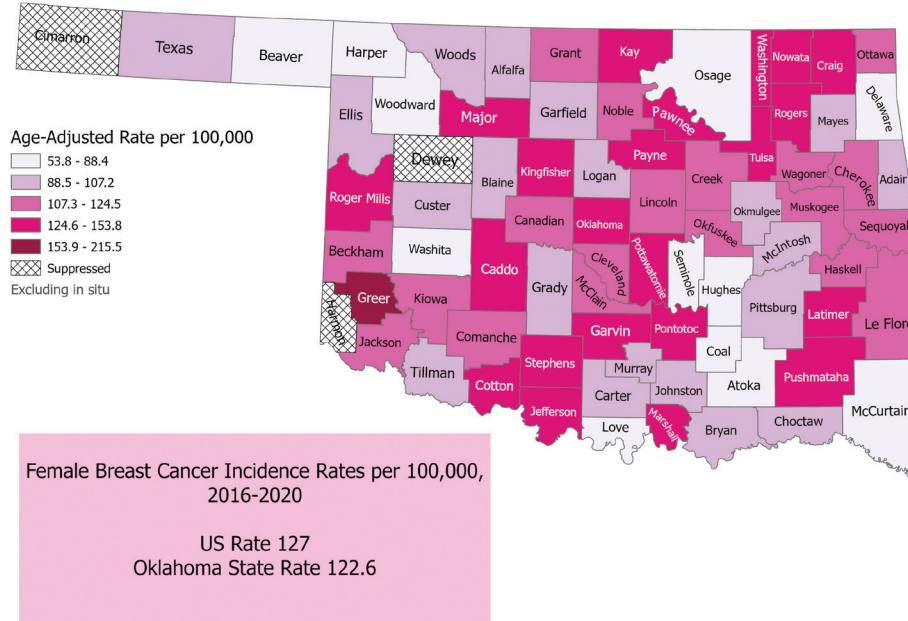
Federal BCCEDP funds require a \$3 : \$1 match in the amount of \$278,706.

2. SFY 2023 information for Cherokee Nation was retrieved from: <https://www.cdc.gov/cancer/dcpc/about/foa-dp22-2202/index.htm>.

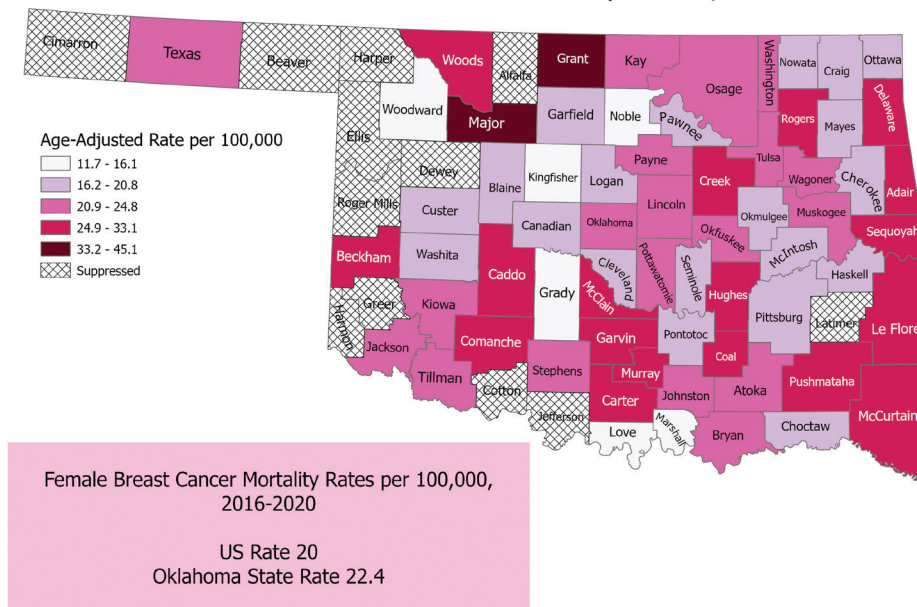
# Incidence and Mortality Rates

## BREAST CANCER

### Female Breast Cancer Incidence Rates, 2016-2020



### Female Breast Cancer Mortality Rates, 2016-2020



Oklahoma data - Oklahoma State Department of Health (OSDH), Center for Health Statistics, Oklahoma Central Cancer Registry (OCCR) 2020, on Oklahoma Statistics on Health Available for Everyone (OK2SHARE). Accessed at <http://www.health.ok.gov/ok2share> on 19SEP2023:15:19:09.

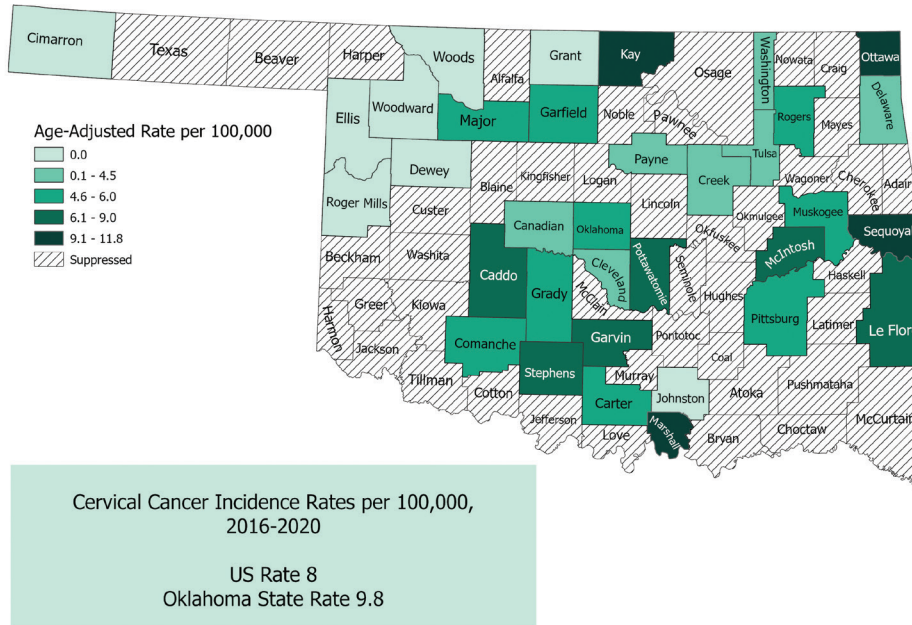
US Rates - U.S. Cancer Statistics Working Group. U.S. Cancer Statistics Data Visualizations Tool, based on 2022 submission data (1999-2020): U.S. Department of Health and Human Services, Centers for Disease Control and Prevention and National Cancer Institute; <https://www.cdc.gov/cancer/dataviz>, released in June 2023.

Age-adjusted using 2000 US Standard Population.

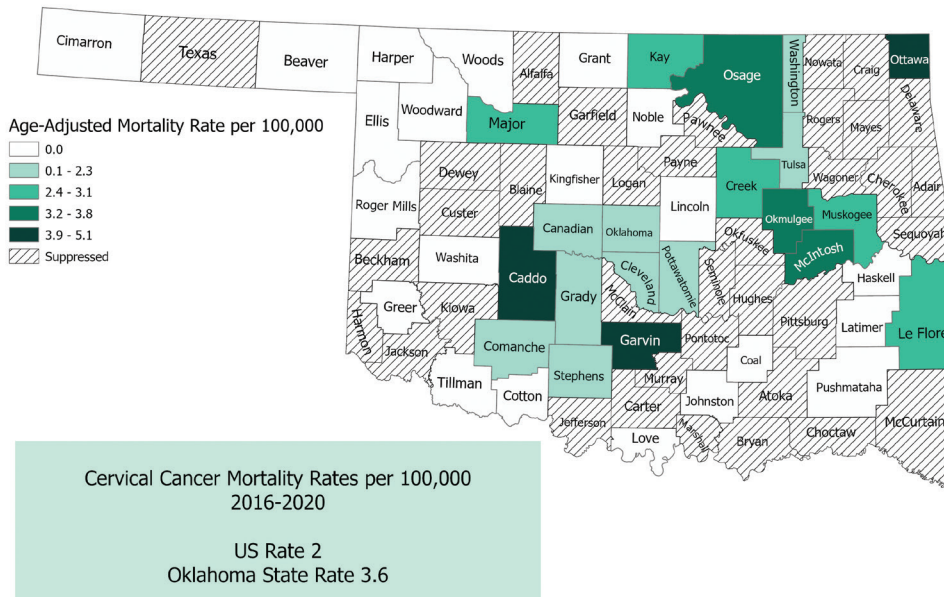
# Incidence and Mortality Rates

## CERVICAL CANCER

### Cervical Cancer Incidence Rates, 2016-2020



### Cervical Cancer Mortality Rates, 2016-2020



Oklahoma data - Oklahoma State Department of Health (OSDH), Center for Health Statistics, Oklahoma Central Cancer Registry (OCCR) 2020, on Oklahoma Statistics on Health Available for Everyone (OK2SHARE). Accessed at <http://www.health.ok.gov/ok2share> on 19SEP2023:15:19:09.

US Rates - U.S. Cancer Statistics Working Group. U.S. Cancer Statistics Data Visualizations Tool, based on 2022 submission data (1999-2020): U.S. Department of Health and Human Services, Centers for Disease Control and Prevention and National Cancer Institute; <https://www.cdc.gov/cancer/dataviz>, released in June 2023.

Age-adjusted using 2000 US Standard Population.

# Outreach / Education Highlight

---

## MINORITY WOMEN'S HEALTH FORUM

Virtual event focusing on health needs for minority women.

October 29, 2022

### SPEAKERS

**Moderator:** D'Elbie Walker, OSDH

**Natasha Bray**

DO, MEd, OSU College of  
Osteopathic Medicine at  
Cherokee Nation

**Margie Burkhart**

Cherokee Nation Public Health

**Erma Willis-Alford**

BSN, RN, First African American  
Nurse at Ardmore Memorial  
Hospital

### PARTNERS

Alpha Epsilon Omega Chapter of  
the Alpha Kappa Alpha

Cherokee Nation

Kaw Women's Health Program

Muskogee County Health  
Department

OSDH Comprehensive Cancer  
Program

OSDH Office of Minority Health &  
Health Equity

OSDH Take Charge

OU Health-Stephenson Cancer  
Center

# Helping Oklahomans

---

## KAW NATION

One patient connected to our program had an extensive family history of breast cancer and she was very worried about having her mammogram done. She knew she needed it, but did not have health insurance and did not have money available to pay out of pocket. She also lacked transportation as she didn't have her own vehicle. She was very thankful when she discovered our program. We were able coordinate for her to receive a free mammogram as well as provide transportation to her appointment. Her mammogram showed no cancer and now she can rest easy knowing that we are available to help with future breast cancer screening.

## TAKE CHARGE PROGRAM

In November 2022, a 60-year-old female called and spoke to a Take Charge Patient Navigator concerned about a lump she found in her left breast. She did not have medical insurance and had recently lost her husband to cancer. The client was approved for Take Charge services and screened the next week with a provider who found a discrete palpable mass in her left breast. The client was then referred for a diagnostic mammogram and ultrasound, which showed abnormal results. It was recommended that the client receive a biopsy and MRI the same day, which confirmed invasive carcinoma in situ leading her to meet with a breast surgeon who recommended a left breast mastectomy. Within one week of her diagnosis, she was scheduled for a mastectomy. She has since been receiving treatment prescribed by her oncologist. She wanted to share her story with others in hope that it will encourage other women to be proactive with getting annual screenings and to not live in denial or fear. She is very thankful for the Take Charge Program and all the healthcare providers who guided her through her journey of survival. (Patient was approved by Medicaid after her diagnostic mammogram and ultrasound were abnormal to help cover the treatment portion of her care).

# Advancement Of Wellness Advisory Council

---

## RECOMMENDATIONS

Increase outreach participation and coordination for cancer screening with Tribal Nations in Oklahoma.

Increase access to breast and cervical cancer screening options for Oklahomans through additional local providers, county health departments, and mobile mammography services.





---

This publication is issued by the Oklahoma State Department of Health, as authorized by Keith Reed, Commissioner of Health. Copies have not been printed but are available on the Oklahoma State Department of Health website at [www.health.ok.gov](http://www.health.ok.gov). The Centers for Disease Control and Prevention (CDC) provides financial support under Cooperative Agreement NU58DP007125-01-00. The contents of the Breast and Cervical Legislative report are solely the responsibility of the authors and do not necessarily represent the official views of the CDC or US Department of Health and Human Services.

---

## ABOUT THE COVER

---

The Oklahoma State Department of Health works to promote prosperity through health for all Oklahomans. Currently, three of every five Oklahoma deaths are a result of one of five chronic diseases: cardiovascular disease, cancer, chronic lower respiratory infections, Alzheimer's Disease and diabetes. The Chronic Disease Prevention Services division implements programs to prevent and lessen the burden of these conditions and produces a number of chronic disease-related reports. The reports will display a similar cover with a common image to tie them together as chronic disease-related reports distinguished by unique titles and overall color. The graceful state bird, the Scissor-tailed Flycatcher, was chosen as the image for each cover as a representation of hope and the resilience of Oklahomans. The Breast and Cervical Cancer Annual Addendum cover is pink to reflect the color associated with breast cancer.