

Antimicrobial Stewardship: Creating a Culture of Antibiotic Awareness

Madison Riojas, PharmD, BCIDP
Antimicrobial Stewardship Pharmacist



OKLAHOMA
State Department
of Health

Objectives

Analyze the CDC Core Elements Leadership Commitment, Accountability, and Expertise.

Introduce CDC Core Element Action.

Identify opportunities to implement CDC Core Elements into the Long Term Care practice setting.

Antimicrobial Stewardship

CDC's Core Elements of Stewardship

O K L A H O M A S T A T E D E P A R T M E N T O F H E A L T H

Core Elements



**Leadership
Commitment**



Accountability



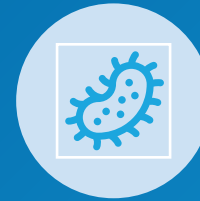
**Stewardship/
Pharmacy Expertise**



Action



Tracking



Reporting



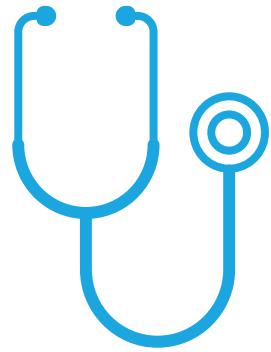
Education

Seven Core Elements of Antimicrobial Stewardship

Core Elements and even further with Priorities of Core Elements are an expectation of regulatory bodies.

The utilization and barriers to implementation of the Core Elements vary across the variety of patient care facilities, but regardless of setting or facility size they are a useful road map to pave the way toward the goal of stewarding the antibiotics we have.

Leadership Commitment

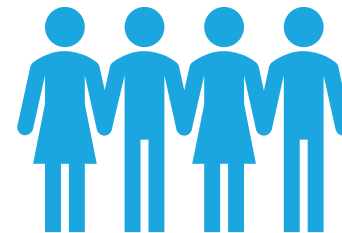


Leadership support is vital to the success of an antimicrobial stewardship program (ASP).

- Lack of resources is commonly identified as a top barrier in all settings.

Create a culture that supports antimicrobial stewardship

- Support stewardship implementation of initiatives and policies
- Meet regularly to understand resources and track progress



Accountability

Designate leader or co-leaders to champion the program



CORE ELEMENTS

Pharmacy/Stewardship Expertise


Pharmacist and physician teams have shown to be highly successful.

- Partner with facility consultant pharmacist to support ASP when pharmacy is not the program lead

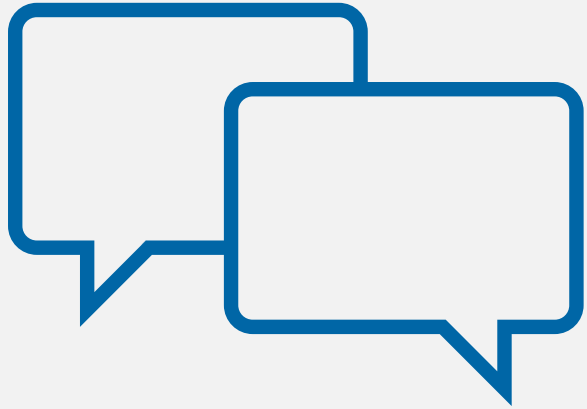
Infectious Diseases (ID) and/or antimicrobial stewardship training is recommended.

- Consider available training and certification programs.
- [CDC Training on Antibiotic](#)

Action

- 
- Bug – Drug Mismatch Considerations
 - Adverse Reaction Monitoring
 - Facility Specific Treatment Pathways
 - Antibiotic Allergy Interviews

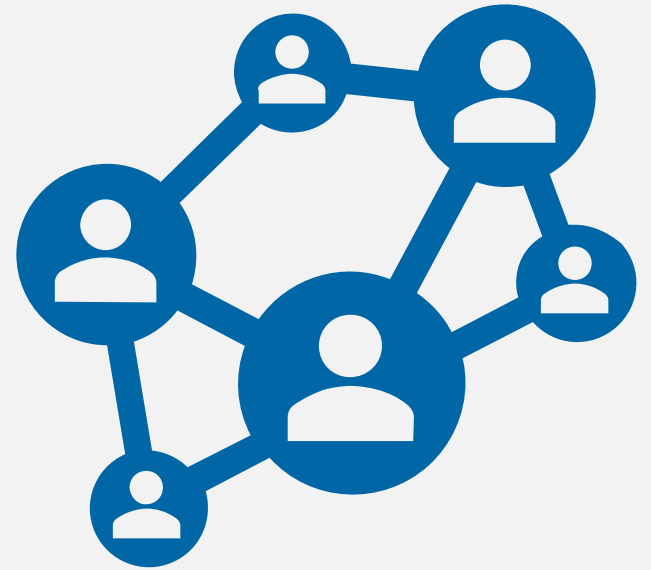
How to Build a Culture of Antibiotic Stewards



Start the Conversation



Analyze the Gaps in
Practice



Get Connected

Additional Resources

[OSDH Antimicrobial Stewardship Resources for Clinicians](#)

[Regional Antibigram Access Request](#)

[Core Elements of Antibiotic Stewardship | Antibiotic Prescribing and Use | CDC](#)

References

Centers for Disease Control and Prevention. *The Core Elements of Hospital Antibiotic Stewardship Programs*. CDC, 25 Oct. 2021, <https://www.cdc.gov/antibiotic-use/hcp/core-elements/index.html>. Accessed 9 Jan. 2025.

Questions?

Madison Riojas, PharmD, BCIDP
Madison.riojas@health.ok.gov



OKLAHOMA
State Department
of Health