



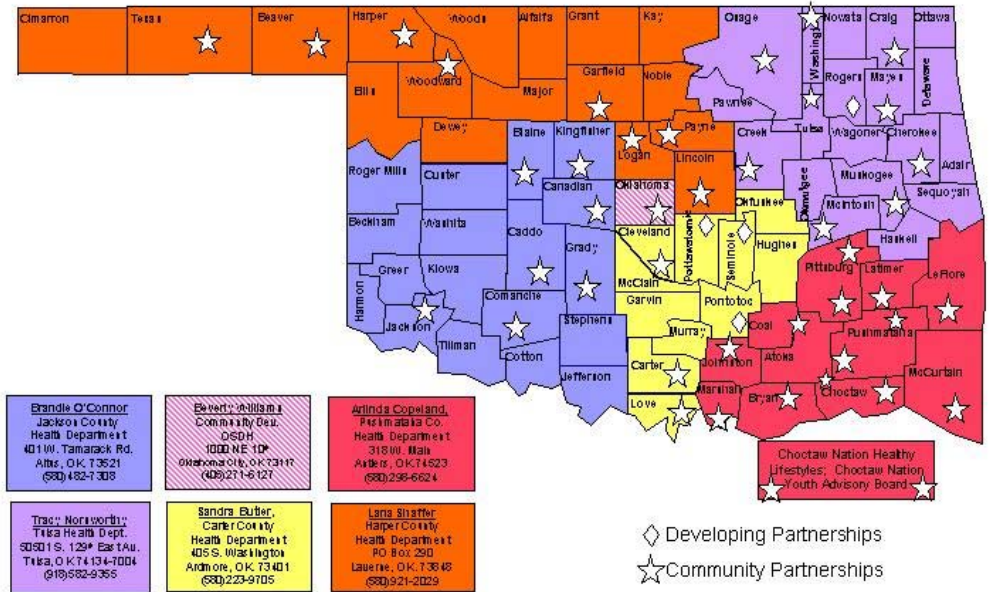
State of the County's Health Report

A Look Back To Move Forward Cleveland County

The state of Oklahoma has been in a downward health trend since the 1990's, until recently. Through the efforts of the state and county health departments, state and local governments and the individual communities the health of Oklahomans is looking up. However, we could do more to improve the health of the citizens of Oklahoma.

This report focuses on the health factors for the citizens of Cleveland County. We will take a look back to discover what has been affecting the health of the citizens in order to move forward and make healthy, effective and safe changes for all.

TURNING POINT PARTNERSHIPS and
FIELD CONSULTANT DISTRICT



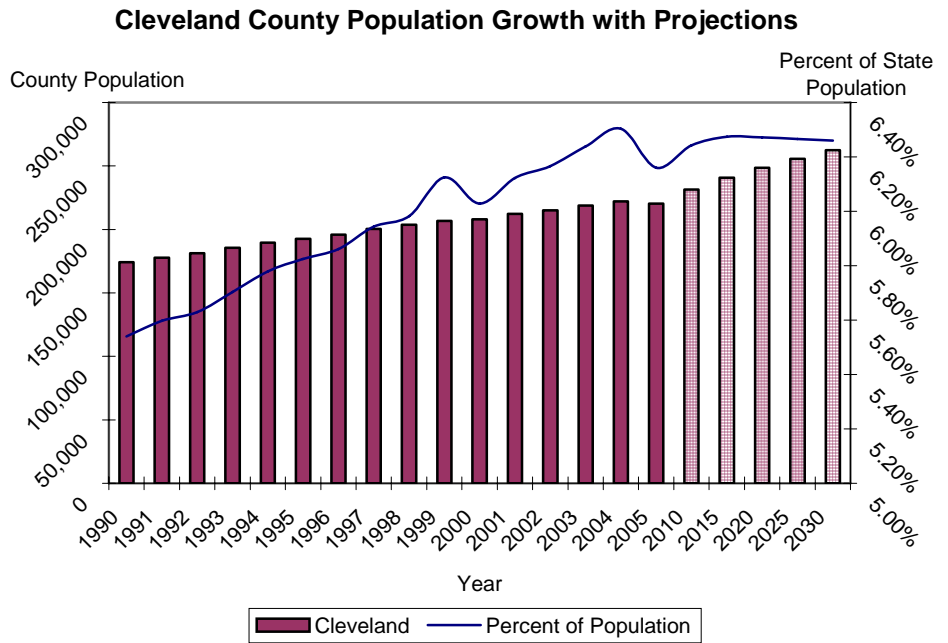
- Brandie O'Connor**
Jackson County
Health Department
401 W. Tamarack Rd.
Atoka, OK 73521
(505) 482-1308
- Evelyn Williams**
Comanche County
Community Dev.
1000 NE 10P
Okemah, OK 73117
(405) 271-6127
- Arlinda Copeland**
Fremont County
Health Department
318 W. Main
Arden, OK 74523
(580) 238-6624
- Tracy Norisworthy**
Tulsa Health Dept.
5050 S. 129th East Ave.
Tulsa, OK 74134-7004
(918) 582-9355
- Sandra Butler**
Carter County
Health Department
405 S. Washington
Ardenmore, OK 73401
(800) 223-9705
- Lana Shaffer**
Haskell County
Health Department
PO Box 290
Lawrence, OK 73048
(505) 921-2029
- Choctaw Nation Health
Lifestyles: Choctaw Nation
Youth Advisory Board**

Inside this issue:

County Demographics	2	Teen Pregnancy	5
Top 10 Leading Causes of Death	2	Poverty	5
Nutrition & Obesity	2	OK By One—State Immunization Data	6
Top 10 Leading Causes of Death Table	3	County Health Department Usage	7
Injury & Violence	4	Health Care Costs Summary	7
Tobacco use	4	Turning Point	8
Physical Activity, Wellness & Diabetes	4		

Demographics

- Population estimates
 - 19% increase from 1990 to 2000 (174,253 to 208,016)
 - 7% increase from 2000 to 2004
 - Ranked 5th for growth in state
- 2000 Census
- Hispanic/Latino ethnicity = 4%
- Race
 - Whites = 84%
 - Native Americans = 4%
 - Blacks = 4%
 - Other/Multiple = 8%
- Age
 - Under 5 = 6%
 - Over 64 = 8%
 - Median age = 32.2 years
- Housing units
 - Occupied = 79,186 (93%)
 - Vacant = 5,658 (7%)
- Disability (ages 21 to 64) = 16.2% national = 19.2% state = 21.5%
- Individuals below poverty = 10.6% national = 12.4% state = 14.7%



* *Vital Statistics, Health Care Information Systems, OSDH & Centers for Disease Control*

Top 10 Leading Causes of Death

The top 10 leading causes of death table on the next page displays a broad picture of the causes of death in Cleveland County. Since many health-related issues are unique to specific ages, this table provides causes of death by age group at a glance. The causes of death that are present across almost every age group have been highlighted. From 1983 to 1993 heart disease killed 3,011 people in Cleveland County

and is still the leading cause of death among all age groups. According to the Centers for Disease Control, almost \$400,000 is spent on each heart disease-related death. With an average of 350.7 deaths a year, heart disease accounts for almost \$130 million a year in

**Heart disease
accounts for almost
\$130 million a year
in medical costs in
Cleveland County.**

in Cleveland County.

Alzheimer's disease and the complications associated with it have increased from the 9th ranked cause of death (1983-1993) to the 8th ranked cause of death in persons 65 and older accounting for a 105% increase in deaths.

* *Behavioral Risk Factor Surveillance System, Health Care Information System, OSDH & Health Affairs Journal, R. Strum, 2002*

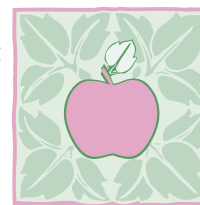
Nutrition and Obesity

With the United States coming in as the most obese country in the world, health care costs related to obesity and poor nutrition are on the rise.

Of the 292 million people in the United States, 129 million are overweight or obese according to their body mass index (BMI). The number of obese (BMI > 29) and overweight (BMI 25-29) Oklahomans has been increasing at the

same rate as the nation, and health care costs are reflecting this downward spiral of health. For persons under the age of 65, on average, health care costs are \$395 more for obese individuals and are even greater for persons over the age of 65.

In 2002-2004, 20%



**Sensible Foods – Sensible Portions
5 to 9 Fruits & Vegetables
a Day**

(43,993) of people in Cleveland County were considered obese which accounted for an additional \$17,377,235 in medical costs for the county. These costs are underestimated because they do not take into account the percentage of obese or overweight persons who are over the age of 65.

Top 10 Causes of Death by Age Group Cleveland County 1993-2003

Rank	0-4	05-14	15-24	25-34	35-44	45-54	55-64	65+	All Ages
1	PERINATAL PERIOD 62	UNINTENT. INJURY 24	UNINTENT. INJURY 106	UNINTENT. INJURY 75	CANCER 134	CANCER 360	CANCER 554	HEART DISEASE 3017	HEART DISEASE 3859
2	CONGENITAL ANOMALIES 36	HOMICIDE/LEGAL 8	SUICIDE 50	SUICIDE 54	UNINTENT. INJURY 97	HEART DISEASE 255	HEART DISEASE 463	CANCER 1735	CANCER 2857
3	UNINTENT. INJURY 23	CANCER 8	HOMICIDE/LEGAL 16	CANCER 45	HEART DISEASE 85	UNINTENT. INJURY 75	BRONCHITIS/EMPHYSEMA/ASTHMA 97	STROKE 767	STROKE 902
4	SIDS 15	SUICIDE 5	CANCER 12	HEART DISEASE 21	SUICIDE 56	STROKE 50	STROKE 65	BRONCHITIS/EMPHYSEMA/ASTHMA 535	BRONCHITIS/EMPHYSEMA/ASTHMA 660
5	CANCER 8	CONGENITAL ANOMALIES 4	HEART DISEASE 8	HIV 21	HIV 30	SUICIDE 40	DIABETES MELLITUS 52	INFLUENZA/PNEUMONIA 344	UNINTENT. INJURY 622
6	HOMICIDE/LEGAL 7	HEART DISEASE 3	CONGENITAL ANOMALIES 3	HOMICIDE/LEGAL 13	LIVER DISEASE 19	LIVER DISEASE 33	UNINTENT. INJURY 45	DIABETES MELLITUS 222	INFLUENZA/PNEUMONIA 390
7	HEART DISEASE 6	BRONCHITIS/EMPHYSEMA/ASTHMA 2	STROKE 2	STROKE 4	HOMICIDE/LEGAL 14	DIABETES MELLITUS 29	LIVER DISEASE 22	UNINTENT. INJURY 177	DIABETES MELLITUS 318
8	INFLUENZA/PNEUMONIA 6	SEPTICEMIA (BLOOD POISONING) 2	INFLUENZA/PNEUMONIA 2	DIABETES MELLITUS 3	DIABETES MELLITUS 12	BRONCHITIS/EMPHYSEMA/ASTHMA 20	INFLUENZA/PNEUMONIA 18	ALZHEIMER'S DISEASE 127	SUICIDE 244
9	STROKE 4	NON-CANCEROUS TUMOR 1	ANEMIA 1	COMPLICATED PREGNANCY 2	STROKE 9	SEPTICEMIA (BLOOD POISONING) 17	SUICIDE 16	KIDNEY DISEASE 125	KIDNEY DISEASE 143
10	BRONCHITIS/EMPHYSEMA/ASTHMA 3	FOUR CAUSES TIED 1	FOUR CAUSES TIED 1	THREE CAUSES TIED 2	INFLUENZA/PNEUMONIA 6	TWO CAUSES TIED 13	SEPTICEMIA (BLOOD POISONING) 11	PNEUMONITIS 106	ALZHEIMER'S DISEASE 130

Data source: Vital Statistics, Health Care Information Division, Oklahoma State Department of Health
Produced by: Community Development Service, Community Health Services, Oklahoma State Department of Health

Injury and Violence

Across the nation and the state of Oklahoma, unintentional and violence-related injuries are on the rise. Unintentional injuries account for the 4th leading cause of death in the United States and the 5th leading cause of death in Oklahoma from 1999-2002. For persons ages 1 to 44 in Oklahoma, unintentional injuries are the leading cause of death.

This trend does not change much in Cleveland County. Unintentional injuries are the leading cause of death from ages 5 to 34.

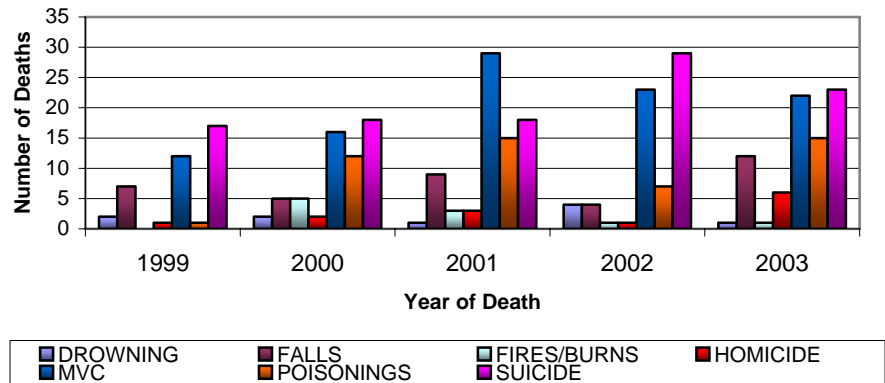
It is estimated that for every motor vehicle-related death \$1.1 million in economic costs are incurred. For Cleveland County which has an average of 20.4 motor vehicle-related deaths a

year, that translates to almost \$23 million a year.

Violence-related injuries (homicide

and suicide) in Cleveland County are ranked in the top 10 in seven of the eight age groups (see Top 10 list on page 3).

Injury and Violence-Related Deaths in Cleveland County, 1999 - 2003



* *Vital Statistics*, Health Care Information Systems, OSDH & Centers for Disease Control

Tobacco Use

According to the 2005 State of the State's Health Report, tobacco use among Oklahomans has remained fairly stable from 1990 to 2002. Oklahoma has been consistently higher in its tobacco use than the nation and is 30% higher than the nation on the amount of tobacco consumed per capita (103 packs vs. 79 packs).

Tobacco use is no longer just the

problem of the individual but also the community as a whole. With health care costs on the rise, targeting areas such as tobacco use is an effective way to control those costs.

In 2002, the CDC estimated that a person that used tobacco accrued over \$3,300 in health care costs per year. According to the Be-

havioral Risk Factor Surveillance Sys-

tem, it is estimated that 25.5% (56,091) of people in Cleveland County use tobacco of some sort. Medical costs accumulated by those persons are over \$185 million a year for Cleveland County.

“Medical costs accumulated by those persons are over \$185 million a year for Cleveland County”

* *Behavioral Risk Factor Surveillance System*, Health Care Information System, OSDH & American Diabetes Association, 2002

Physical Activity, Wellness and Diabetes

The increasing inactivity of the U.S. population is contributing to an increase in numerous poor health-related outcomes. Physical inactivity robs the body of precious energy needed to function properly, in turn health declines and rates of various chronic diseases escalate.

According to the 2002-2004 Behavioral Risk Factor Surveillance System (BRFSS), it is estimated that 25%

(54,992) of people in Cleveland County had no leisure activity in the past month at the time they were surveyed.

The BRFSS also indicated that 4.8% (10,558) of Cleveland County citizens have been diagnosed by a health professional as hav-



Increase activity gradually. Moderate exercise for 30 minutes 5 days a week.

ing diabetes. In 2002, the per capita annual healthcare costs for people with diabetes was \$13,243 compared to \$2,560 for people without diabetes. Persons with diabetes accumulated health care costs of \$139,819,594.00 in one year for Cleveland County.

Teen Pregnancy

While births to teen mothers (age 15 to 19) are on the decline in both the U.S. and Oklahoma, Oklahoma has moved up in rank from 13th to 8th in the country. In 1993 the rate of teen births

was 60.0 (per 1,000 15-19 year old females) in the U.S. and 66.6 in Oklahoma. In 2003, the rate decreased to 41.7 in the U.S. and 55.8 in Oklahoma, a decrease of

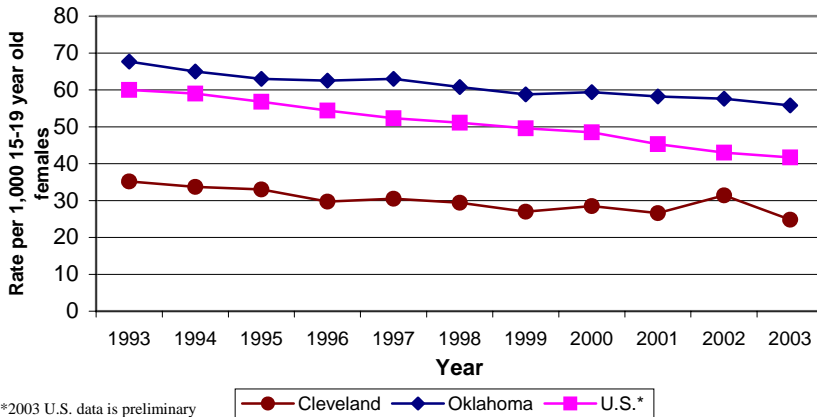
31% and 7%, respectively.

Children of teen mothers are more likely to display poor health and social outcomes than those of older mothers, such as premature birth, low birth weight, higher rates of abuse and neglect, and more likely to go to foster care or do poorly in school. Additionally, births to teen mothers accumulate \$3,200 a year for each teenage birth, which is passed on to citizens.

According to Oklahoma Vital Statistics, Cleveland County had a teen birth rate of 24.8 in 2003 which was a 21% decrease from 2002 (31.4) and a 30% decrease since 1993 (35.2).

With an average of 249 births per year, teen pregnancy costs the citizens of Cleveland County \$796,800.00 a year.

Rate of Live Births to Teen Mothers Ages 15-19, Cleveland County, 1993 to 2003



*2003 U.S. data is preliminary

Note: 33 births to a mother 10-14 years of age occurred during the 11 year period.

Poverty

* U.S. Census Bureau

As the nation advances in technology and the ability to detect and prevent disease at an earlier stage, persons that are impoverished carry a large burden of poor health outcomes. Higher incidences of unplanned or unwanted pregnancies, teen pregnancy, inadequate prenatal care, higher rates of low-birth-weight babies, infant deaths and low immunization rates are all associated with poverty along with a myriad of other adverse health outcomes.

According to the 2000 census, 10.6% of persons in Cleveland

County for whom poverty status was known had an income below what was needed to live at the federal poverty level. Cleveland County is 28% below the state (14.7%) and 15% below the nation (12.4%) for persons with incomes below the federal poverty level.

Income to Poverty Ratio, Cleveland County, 2000 Census

Poverty level	Total	50% below	51% to 99% below	poverty level to 149% above	150% to 199% above	200% and above
Population	198,291	9,477	11,500	14,406	17,217	145,691
Cumulative Population		9,477	20,977	35,383	52,600	198,291
% of Total	100.0%	4.8%	5.8%	7.3%	8.7%	73.5%
Cumulative %		4.8%	10.6%	17.8%	26.5%	100.0%

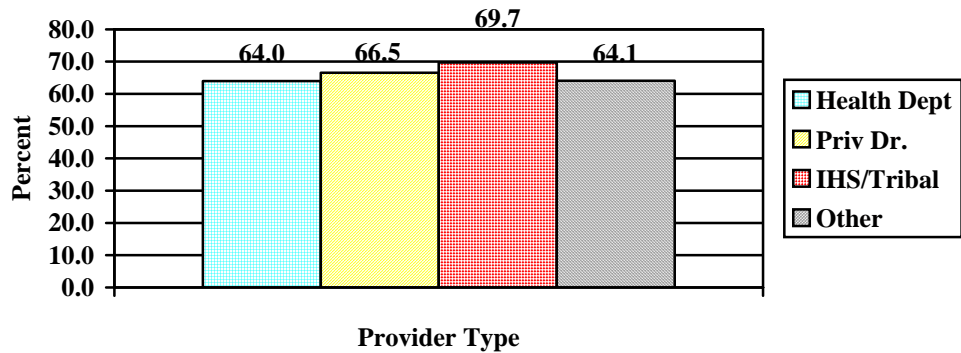
OK By One - State Immunization Data

* 2 Year-old Immunization Survey, Immunization Service, OSDH

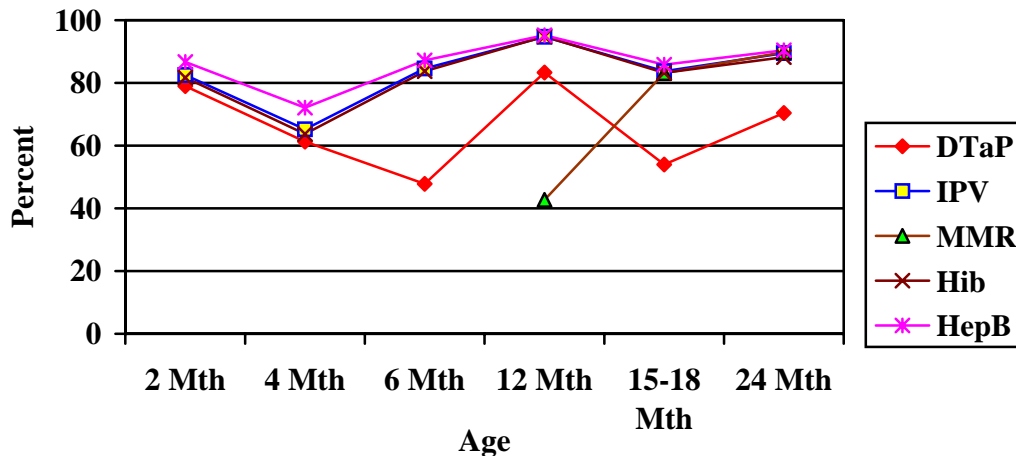
2003-04 Immunization Coverage Rates



4:3:1:1:3 Coverage by Location of Shots, Oklahoma, 2004



Oklahoma Children On Schedule by Antigen, 2004

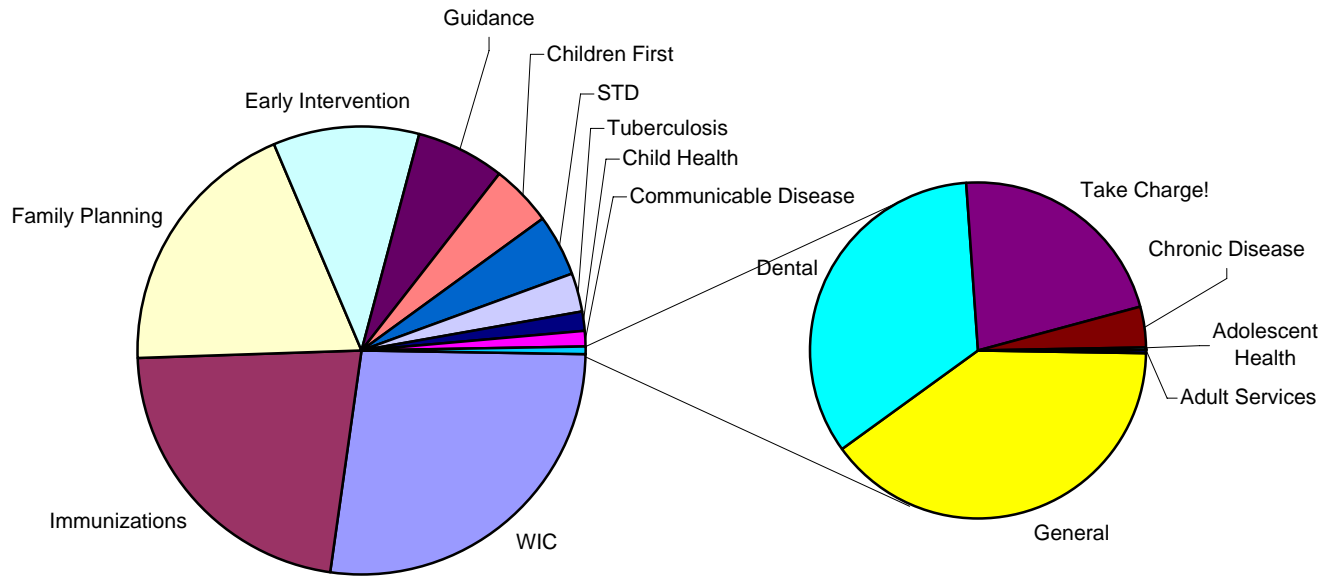


**Note: County level data will be available soon.

County Health Department Usage

* PHOCIS, Community Health Services, OSDH

Attended Appointments for Cleveland County Health Department, State Fiscal Year 05



Health Care Costs Summary

Cardiovascular Disease (Heart Disease)

- Average 351 deaths a year
- \$369,476.69 per death
- Total— \$129,686,318.19 a year

Obesity

- 20% of population (43,993)
- \$395.00 in additional medical costs per person
- Total—\$17,377,235.00

Motor Vehicle-Related Injury Death

- Average 20.4 deaths per year
- \$1,120,000.00 in economic costs per death
- Total—\$22,848,000.00 a year

Tobacco Use

- 25.5% of population (56,091)
- \$3,300.00 in health care costs
- Total—\$185,100,300.00 a year

Diabetes

- 4.8% of population (10,558)
- \$13,243.00 in healthcare costs a year
- Total—\$139,819,594.00 a year

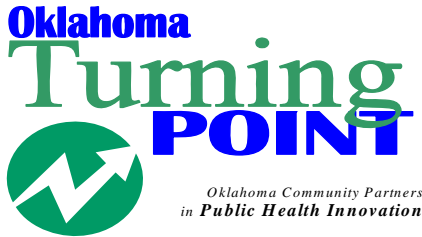
Teen Pregnancy

- Average of 249 births to teen mothers per year
- \$3,200.00 in costs for each birth a year
- Total— \$796,800.00 a year



Grand Total for Cleveland County:

\$495,628,247.19



**OKLAHOMA STATE
DEPARTMENT OF HEALTH**

Community Health Services
Community Development Service

1000 NE 10th St, Rm 508
Oklahoma City, OK 73117
Phone: 405-271-6127
Fax: 405-271-1225

Cleveland County Health Department

250 12th Ave NE
Norman, OK 73071
405-321-4048

224 South Chestnut
Moore, OK 73160
405-794-1591

Looking Back to Move Forward

Report compiled by:
Miriam McGaugh, M.S.
Community Development Service, OSDH
Kelly Baker, MPH
Health Care Information Systems, OSDH

The Oklahoma Turning Point Initiative is public health improvement in action. The success of the Turning Point process involves a partnership between the state and county departments of health, local communities, and policy-makers. The Oklahoma Turning point engine is fueled by a community-based decision making process whereby local communities tap into the capacities, strengths, and vision of their citizens to create and promote positive, sustainable changes in the public health system, and the public's health.

Cleveland County Turning Point

Thank you to all the people of Cleveland County Turning Point who have made It such a success.

- Allan Grubb- Board of Health
- City of Norman
- Cleveland County Health Department
- Cleveland County YMCA
- Health for Friends
- Marge Greer- Community Volunteer
- Moore School System
- NAIC
- Noble Police Department
- Noble PTA
- Norman Chamber of Commerce
- Norman City Attorney's Office
- Norman Parks and Recreation Department
- Norman Pediatric Associates
- Norman Public Schools
- Norman Regional Hospital
- Norman Regional Hospital Auxiliary
- Norman Regional Hospital Foundation
- Success By Six
- Transcript
- United Way of Norman
- University of Oklahoma
- Work Force Oklahoma

