



OKLAHOMA STATE DEPARTMENT OF HEALTH

State of the County's Health Report

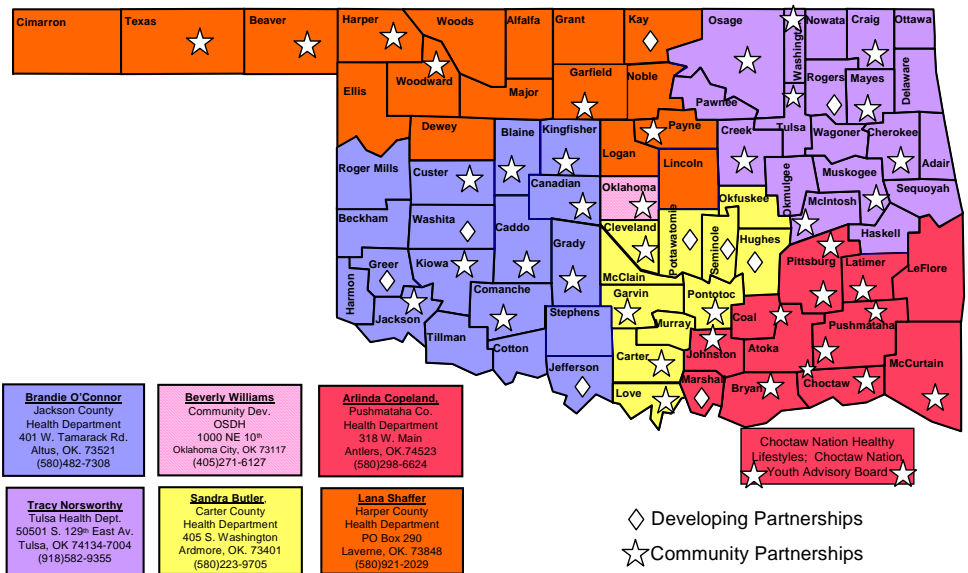
A Look Back To Move Forward

Roger Mills County

The state of Oklahoma has been in a downward health trend since the 1990's, until recently. Through the efforts of the state and county health departments, state and local governments and the individual communities the health of Oklahomans is looking up. However, we could do more to improve the health of the citizens of Oklahoma.

This report focuses on the health factors for the citizens of Roger Mills County. We will take a look back to discover what has been affecting the health of the citizens in order to move forward and make healthy, effective and safe changes for all.

TURNING POINT PARTNERSHIPS and FIELD CONSULTANT DISTRICT



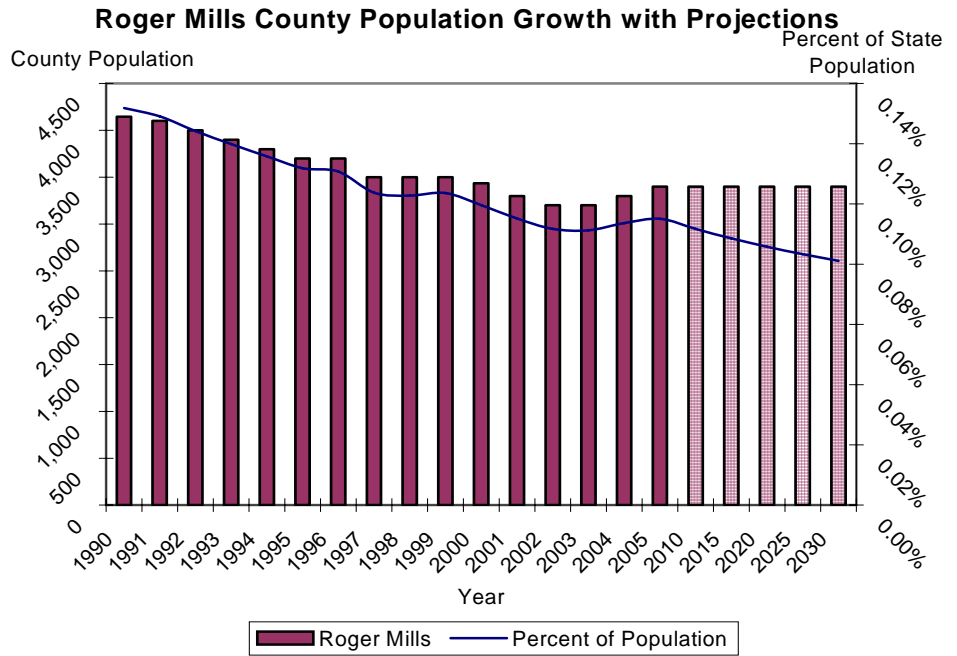
Field Rep Districts 9-13-05

Inside this issue:

County Demographics	2	Teen Pregnancy	5
Top 10 Leading Causes of Death	2	Poverty	5
Nutrition & Obesity	2	OK By One—State Immunization Data	6
Top 10 Leading Causes of Death Table	3	County Health Department Usage	7
Injury & Violence	4	Health Care Costs Summary	7
Tobacco use	4	Turning Point	8
Physical Activity, Wellness & Diabetes	4		

Demographics

- Population estimates
 - 17% decrease from 1990 to 2000 (4,147 to 3,436)
 - 4% decrease from 2000 to 2004
 - Ranked 69th for growth in state
- 2000 Census
- Hispanic/Latino ethnicity = 3%
- Race
 - Whites = 92%
 - Native Americans = 5%
 - Blacks = 0%
 - Other/Multiple = 2%
- Age
 - Under 5 = 5%
 - Over 64 = 19%
 - Median age = 41.7 years
- Housing units
 - Occupied = 1,428 (82%)
 - Vacant = 321 (18%)
- Disability (ages 21 to 64) = 19.1%
 - national = 19.2% state = 21.5%
- Individuals below poverty = 16.3%
 - national = 12.4% state = 14.7%



* *Vital Statistics, Health Care Information Systems, OSDH & Centers for Disease Control*

Top 10 Leading Causes of Death

The top 10 leading causes of death table on the next page displays a broad picture of the causes of death in Roger Mills County. Since many health-related issues are unique to specific ages, this table provides causes of death by age group at a glance. The causes of death that are present across almost every age group have been highlighted. From 1983 to 1993 heart disease killed 220 people in Roger Mills County

and is still the leading cause of death among all age groups. According to the Centers for Disease Control, almost \$400,000 is spent on each heart disease-related death. With an average of 16.6 deaths a year, heart disease accounts for over \$6 million a year in medical costs in

**Heart disease
accounts for over \$6
million a year in
medical costs in
Roger Mills County.**

Roger Mills County.

Alzheimer's disease and the complications associated with it have increased from the 9th ranked cause of death (1983-1993) to the 6th ranked cause of death in persons 65 and older accounting for a 200% increase in deaths.

* *Behavioral Risk Factor Surveillance System, Health Care Information System, OSDH & Health Affairs Journal, R. Strum, 2002*

Nutrition and Obesity

Data Not Available At This Time

Top 10 Causes of Death by Age Group Rogers Mills County 1993-2003

Rank	0-4	05-14	15-24	25-34	35-44	45-54	55-64	65+	All Ages
1	3 CONGENITAL ANOMALIES	1 UNINTENT. INJURY	7 UNINTENT. INJURY	3 UNINTENT. INJURY	5 UNINTENT. INJURY	7 HEART DISEASE	19 CANCER	159 HEART DISEASE	183 HEART DISEASE
2	3 UNINTENT. INJURY		2 SUICIDE	1 ALZHEIMER'S DISEASE	2 CANCER	4 CANCER	16 HEART DISEASE	50 CANCER	75 CANCER
3	2 PERINATAL PERIOD		2 OTHER	1 SUICIDE	2 SUICIDE	2 STROKE	4 BRONCHITIS/ EMPHYSEMA/ ASTHMA	37 STROKE	41 STROKE
4					1 BRONCHITIS/ EMPHYSEMA/ ASTHMA	2 LIVER DISEASE	2 STROKE	22 INFLUENZA/ PNEUMONIA	27 UNINTENT. INJURY
5					1 CONGENITAL ANOMALIES	2 SUICIDE	2 DIABETES MELLITUS	18 BRONCHITIS/ EMPHYSEMA/ ASTHMA	23 BRONCHITIS/ EMPHYSEMA/ ASTHMA
6					1 HEART DISEASE		4 OTHER	9 ALZHEIMER'S DISEASE	22 INFLUENZA/ PNEUMONIA
7								8 DIABETES MELLITUS	10 ALZHEIMER'S DISEASE
8								8 UNINTENT. INJURY	10 DIABETES MELLITUS
9								5 KIDNEY DISEASE	7 SUICIDE
10								3 ATHERO-SCLEROSIS	5 CONGENITAL ANOMALIES

Data source: *Vital Statistics*, Health Care Information Division, Oklahoma State Department of Health
 Produced by: Community Development Service, Community Health Service, Oklahoma State Department of Health

July 2005

Injury and Violence

Across the nation and the state of Oklahoma, unintentional and violence-related injuries are on the rise. Unintentional injuries account for the 4th leading cause of death in the United States and the 5th leading cause of death in Oklahoma from 1999-2002. For persons ages 1 to 44 in Oklahoma, unintentional injuries are the leading cause of death.

This trend does not change much in Roger Mills County. Unintentional injuries are the leading cause of death from ages 5 to 44.

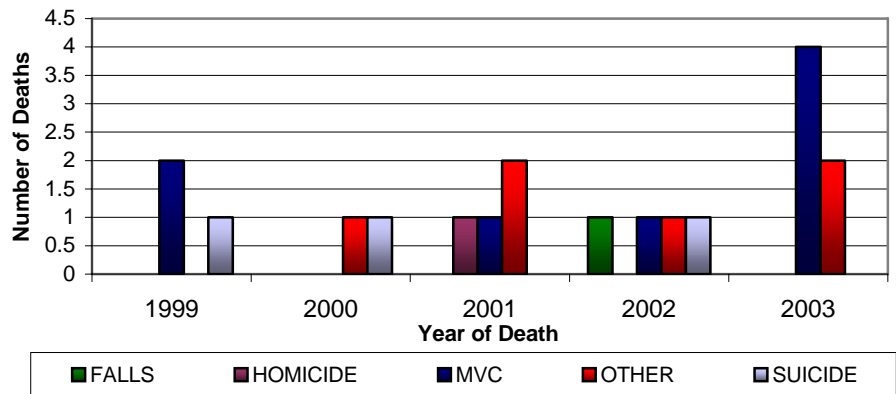
It is estimated that for every motor vehicle-related death \$1.1 million in economic costs are incurred. For Roger Mills County which has an average of 1.6 motor vehicle-related deaths a year,

that translates to almost \$2 million a year.

Violence-related injuries (homicide

and suicide) in Roger Mills County are ranked in the top 10 in four of the six age groups (see Top 10 list on page 3).

Injury and Violence-Related Deaths in Roger Mills County, 1999 - 2003



Tobacco Use

Data Not Available At This Time

Physical Activity, Wellness and Diabetes

Data Not Available At This Time

Teen Pregnancy

While births to teen mothers (age 15 to 19) are on the decline in both the U.S. and Oklahoma, Oklahoma has moved up in rank from 13th to 8th in the country. In 1993 the rate of teen births

was 60.0 (per 1,000 15-19 year old females) in the U.S. and 66.6 in Oklahoma. In 2003, the rate decreased to 41.7 in the U.S. and 55.8 in Oklahoma, a decrease of

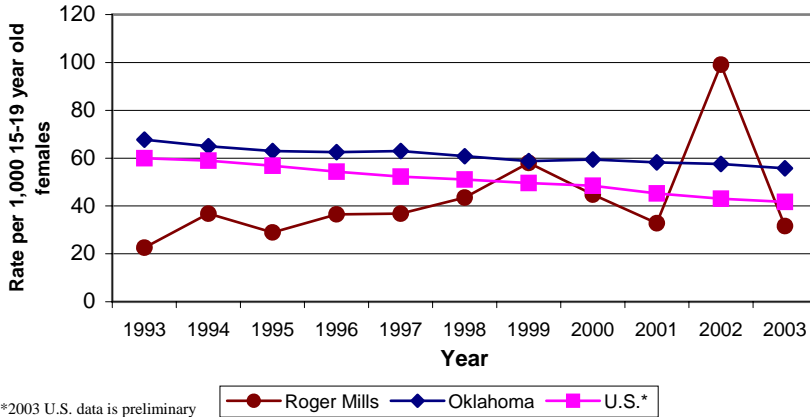
31% and 7%, respectively.

Children of teen mothers are more likely to display poor health and social outcomes than those of older mothers, such as premature birth, low birth weight, higher rates of abuse and neglect, and more likely to go to foster care or do poorly in school. Additionally, births to teen mothers accumulate \$3,200 a year for each teenage birth, which is passed on to citizens.

According to Oklahoma Vital Statistics, Roger Mills County had a teen birth rate of 31.6 in 2003 which was a 68% decrease from 2002 (99.1) and a 40% increase since 1993 (22.6).

With an average of 5 births per year, teen pregnancy costs the citizens of Roger Mills County \$16,000.00 a year.

Rate of Live Births to Teen Mothers Ages 15-19, Roger Mills County, 1993 to 2003



*2003 U.S. data is preliminary

Note: 1 births to a mother 10-14 years of age occurred during the 11 year period.

Poverty

* U.S. Census Bureau

As the nation advances in technology and the ability to detect and prevent disease at an earlier stage, persons that are impoverished carry a large burden of poor health outcomes. Higher incidences of unplanned or unwanted pregnancies, teen pregnancy, inadequate prenatal care, higher rates of low-birth-weight babies, infant deaths and low immunization rates are all associated with poverty along with a myriad of other adverse health outcomes.

According to the 2000 census, 16.3% of persons in Roger Mills

County for whom poverty status was known had an income below what was needed to live at the federal poverty level. Roger Mills County is 11% above the state (14.7%) and 32% above the nation (12.4%) for persons with incomes below the federal poverty level.

County for whom poverty status was known had an income below what was needed to live at the federal poverty level. Roger Mills County is 11% above the state (14.7%) and 32% above the nation (12.4%) for persons with incomes below the federal poverty level.

Income to Poverty Ratio, Roger Mills County, 2000 Census

Poverty level	Total	50% below	51% to 99% below	poverty level to 149% above	150% to 199% above	200% and above
Population	3,395	222	332	466	373	2,002
Cumulative Population		222	554	1,020	1,393	3,395
% of Total	100.0%	6.5%	9.8%	13.7%	11.0%	59.0%
Cumulative %		6.5%	16.3%	30.0%	41.0%	100.0%

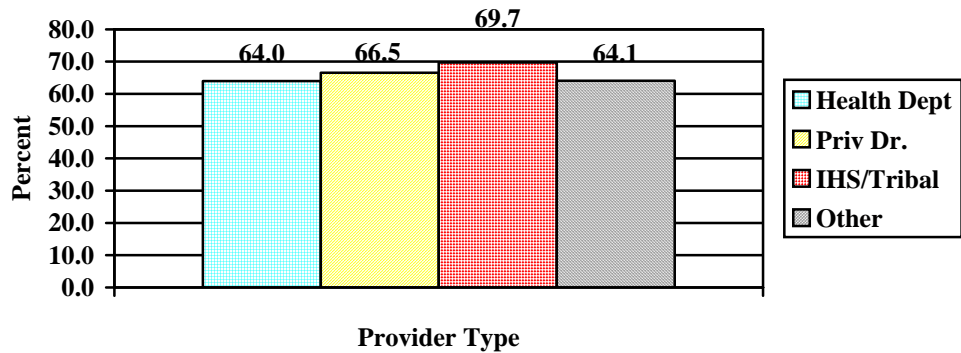
OK By One - State Immunization Data

* 2 Year-old Immunization Survey, Immunization Service, OSDH

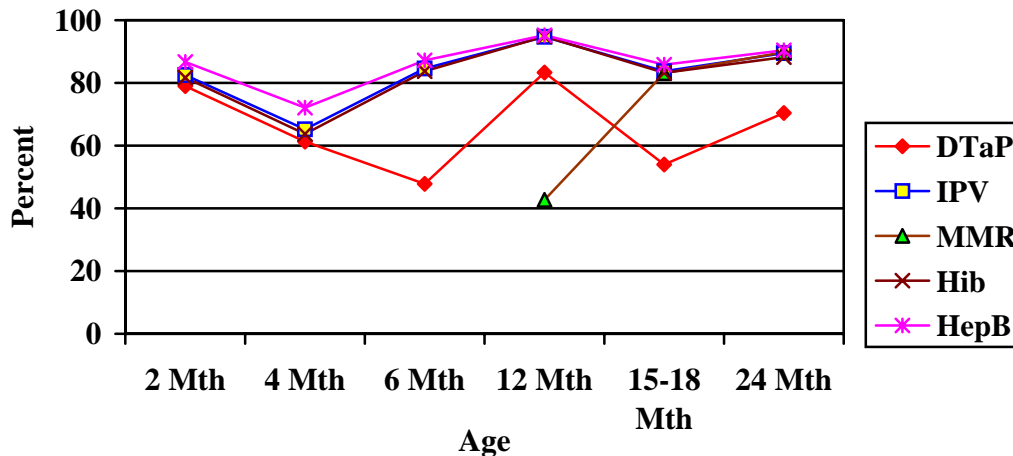
2003-04 Immunization Coverage Rates



4:3:1:1:3 Coverage by Location of Shots, Oklahoma, 2004



Oklahoma Children On Schedule by Antigen, 2004



**Note: County level data will be available soon.

Data Not Available At This Time

Health Care Costs Summary

Cardiovascular Disease (Heart Disease)

- Average 17 deaths a year
- \$369,476.69 per death
- Total— \$6,281,103.73 a year

Obesity

- Data Not Available

Motor Vehicle-Related Injury Death

- Average 1.6 deaths per year
- \$1,120,000.00 in economic costs per death
- Total—\$1,792,000.00 a year

Tobacco Use

- Data Not Available

Diabetes

- Data Not Available

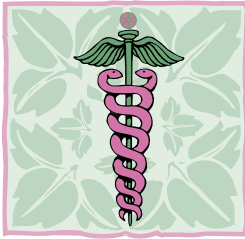
Teen Pregnancy

- Average of 5 births to teen mothers per year
- \$3,200.00 in costs for each birth a year
- Total— \$16,000.00 a year



Grand Total for Roger Mills County:

\$8,089,103.73



**OKLAHOMA STATE
DEPARTMENT OF HEALTH**

Community Health Services
Community Development Service

1000 NE 10th St, Rm 508

Oklahoma City, OK 73117

Phone: 405-271-6127

Fax: 405-271-1225

Email: miriamm@health.ok.gov

A Look Back To Move Forward

Report compiled by:
Miriam McGaugh, M.S.
Community Development Service, OSDH
Kelly Baker, MPH
Health Care Information Systems, OSDH

The Oklahoma Turning Point Initiative is public health improvement in action. The success of the Turning Point process involves a partnership between the state and county departments of health, local communities, and policy-makers. The Oklahoma Turning point engine is fueled by a community-based decision making process whereby local communities tap into the capacities, strengths, and vision of their citizens to create and promote positive, sustainable changes in the public health system, and the public's health.

Oklahoma Turning POINT



*Oklahoma Community Partners
in Public Health Innovation*