

# PUBLIC HEALTH STATISTICS

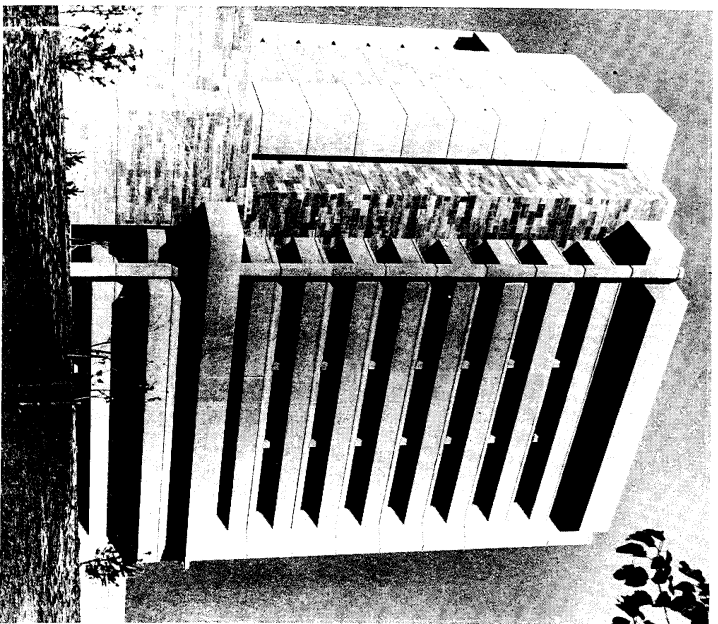
## Births and Deaths



1970



STATE OF  
OKLAHOMA



OKLAHOMA STATE DEPARTMENT OF HEALTH  
PUBLIC HEALTH STATISTICS DIVISION

TENTH AND STONEWALL

OKLAHOMA CITY, OKLAHOMA

Phone (405) 271-4542

R. Leroy Carpenter, M.D., Commissioner of Health

*Charles Alford*

*Roger Jackson, Bill Hunter in Adm. Serv. Sec. Comm.  
Research Dept*  
521-3755

TABLE OF CONTENTS

	Page
Discussion.....	1-20
Population.....	1
Residence Allocation.....	1
Cause of Death Classification.....	2
Live Births.....	5
Immature Births.....	5-6
Stillbirths.....	6
Total Deaths.....	10
Leading Causes of Death.....	12
Heart Disease.....	12
Malignant Neoplasms.....	12
Cerebrovascular Disease.....	14
Accidents.....	14
Diseases of the Arteries.....	14
Communicable Diseases.....	14
Maternal Deaths.....	14
Infant Deaths.....	16
Perinatal Mortality.....	17

APPENDIX

	Page
Table A. Births, Deaths, and Deaths by Important Causes, Number and Rate, Oklahoma, 1941-1970	22
Table B. Recorded Births, Stillbirths, Deaths, Infant and Neonatal Deaths, Number and Rate, by County, Oklahoma, 1970.....	30
Table C. Resident Deaths by County, by Race, by Sex Oklahoma, 1970.....	31
Table I. Resident Deaths by International Intermediate List of 150 Causes, Number and Rate, by Race, Oklahoma, 1970.....	32-33
Table II. Resident Births, Deaths, and Deaths by International Abbreviated List of 50 Causes-Number and Rate by Race, Oklahoma, 1970.....	34
Table III. Resident Deaths by International Abbreviated List of 50 Causes by Race, Sex, and Age, Oklahoma, 1970.....	35-41
Table IV. Leading Causes of Death, Number and Percent, by Race, by Age Group, Oklahoma, 1970.	42

## PUBLIC HEALTH STATISTICS OF OKLAHOMA

### BIRTHS & DEATHS

1970

This publication contains data relating to births, deaths, and stillbirths for Oklahoma during calendar year 1970. Information is presented for the state, each county, and the three major cities (Oklahoma City, Tulsa city, and Lawton) in eight basic tables in the appendix. A ninth table in the appendix reflects historical data for the years 1941-1970 for the state as a whole. The narrative portion of the bulletin, with tables and charts illustrating specific points of interest, presents some of the more frequently requested statistics.

Information in greater detail than that published is available upon request from the Division of Statistics of the State Department of Health.

### POPULATION

All population figures used in calculating rates were taken from the General Population Characteristics - 1970 Census of Population compiled by the Bureau of the Census, U.S. Department of Commerce. As a point of information, the population count for the state (2,559,253) cannot be reconciled to the county totals (2,859,733) as a discrepancy exists in the census figures. However, these figures have been certified as official by the Census Bureau and are, therefore, used in this report.

### RESIDENCE ALLOCATION

Unless otherwise specified, all data included in this publication related to the resident population regardless of the place of occurrence of the event. Table B in the Appendix is an exception since it shows the births, stillbirths, deaths, and infant and neonatal deaths that occurred in each county during 1970.

Table 1 Residence Allocation, Oklahoma, 1970

	Non-resident certificates filed in Oklahoma	Oklahoma resident transcripts filed in other states
Births	453	1,649
Deaths	612	1,301

Birth, death and stillbirth certificates are filed in the state in which the event occurs; however, a voluntary exchange between the states of facsimiles of certificates for nonresident births, stillbirths, and deaths makes it possible to reallocate these vital events to the usual place of residence for statistical purposes.

Table 1 shows that the exchange of both birth and death information between the states resulted in a net gain for the year.

As will be noted in Table 2, the greater percent of births and deaths occurring outside Oklahoma to state residents occurred in one of the six adjoining states.

#### CAUSE OF DEATH CLASSIFICATION

The International Classification of Diseases - Adopted For Use In The United States (Eighth Revision), along with special guidelines developed by the National Vital Statistics Division, have been used in this report for selecting the underlying cause of death for statistical purposes.

Table 2 Births and Deaths of Oklahoma Residents Occurring outside Oklahoma, by state in which the Events Occurred, 1970

State	Births	Deaths
Alabama	1	6
Arizona	1	15
Arkansas	835	375
California	8	39
Colorado	20	29
Illinois	12	13
Iowa	5	8
Kansas	176	173
Louisiana	72	16
Massachusetts	16	1
Minnesota	3	5
Missouri	86	53
Nebraska	1	13
New Mexico	10	31
Tennessee	12	10
Texas	406	456
Wisconsin	-	5
Other	35	53
Total	1,649	1,301

In advancing from the Seventh Revision to the Eighth Revision, categories and rules for cause of death selection were changed considerably. Some categories were made more comprehensive through the inclusion of additional morbid conditions, while others were reduced in size by removing one or more of the morbid conditions previously assigned to them.

To facilitate use of the historical data shown in Table A of the Appendix, Table 3 was developed to compare cause of death data for 1967 (Seventh Revision) with similar data for 1968 (Eighth Revision). Those categories which showed a comparability ratio of 98.0 or less and 102.0 or more are shown in Table 3.

In using the comparability ratios, one should recognize that a ratio of 100.0 does not necessarily mean that there was no change in the category. It, in all likelihood, means that the number of deaths coded to that category under the Eighth Revision offset the number of deaths coded to some other categories in the Eighth Revision.

Cause of death code numbers for the Eighth Revision may be found in Tables III and V in the Appendix for all categories used in this publication.

Table 3 Comparability Ratio of Categories Showing Significant Change Due to 8th Revision

Cause of Death	Provisional Comparability Ratio*
Enteritis & Other Diarrhoeal Disease	44.7
Tuberculosis of the Respiratory System	97.1
Syphilis and Its Sequelae	39.1
Benign and Unspecified Neoplasms	102.2
Benign Neoplasms & Neoplasms of Unspecified Nature	88.9
Meningitis	90.9
Chronic Rheumatic Heart Disease	104.8
Hypertensive Disease	64.2
Other Forms of Heart Disease	108.5
Appendicitis	105.9
Intestinal Obstruction & Hernia	74.8
Cirrhosis of the Liver	102.2
Nephritis & Nephrosis	80.0
Hyperplasia of Prostate	96.2
Birth Injury, Difficult Labor, Other Onoxic and Hypoxic Conditions	178.1
Other Causes of Perinatal Morbidity	57.1
All Other Accidents	93.3
Suicide & Self-Inflicted Injury	95.6
All Other External Causes	142.1

\*Ratio of Deaths coded to a specific category by the 8th revision to the deaths coded to this category by the seventh revision expressed by a %

Table 4 Live Birth Attendance, by Race, Oklahoma, 1970

Attendance	Total		White		Negro		Indian	
	No.	%	No.	%	No.	%	No.	%
Total	44,991	100.0	37,591	100.0	4,355	100.0	3,045	100.0
Physician in Hospital	44,757	99.5	37,408	99.5	4,318	99.1	3,031	99.5
Physician not in hospital	82	0.2	55	0.2	21	0.5	6	0.2
Midwife & Other	152	0.3	128	0.3	16	0.4	8	0.3

During 1970, there was a total of 44,991 resident live births. The rate of 17.6 was an increase of 6.0 per cent over 1969, 8.0 per cent over 1968, and 9.3 per cent over 1966 and 1967 (the rate of 16.1 for these two years is the lowest ever recorded in Oklahoma). As can be seen, a definite upward trend in the birth rate is being experienced.

The birth rate for the white was the lowest at 16.4, as compared to 25.3 for the Negro and 30.9 for the Indian. In continuing a long established pattern, the sex ratio was slightly in favor of the males, with 1,054 male births occurring per 1,000 female births.

The percentages of births that occurred in hospitals, and those that had medical or non-medical attendance, are shown in Table 4. As expected, the number of births attended by a physician in a hospital has continued to increase.

Table 5 reflects birth distribution by weight and race. The rate was highest for weights between 6 lb. 10 oz., and 7 lb 11 oz., and this weight range also contained the largest number of births for each racial group.

In 1970, 8.1 per cent of all births with a birth weight specified were immature. Although declining slightly in frequency of occurrence, immaturity continues to be a major cause of neonatal mortality. For the report year, 16.8 per cent of all neonatal deaths listed immaturity as the underlying cause of death.

Table 5 Distribution of Live Births by Birth Weight, by Race, Oklahoma, 1970

Birth Weight	All Races			
	Number	Per Cent	White Number	Indian Number
1 lb. 1 oz. or less	47	0.1	36	2
1 lb. 2 oz. - 2 lb. 3 oz.	177	0.4	123	7
2 lb. 4 oz. - 3 lb. 4 oz.	309	0.7	229	15
3 lb. 5 oz. - 4 lb. 6 oz.	647	1.4	490	33
4 lb. 7 oz. - 5 lb. 8 oz.	2,474	5.5	1,890	154
5 lb. 9 oz. - 6 lb. 9 oz.	8,452	18.8	6,861	458
6 lb. 10 oz. - 7 lb. 11 oz.	17,230	38.3	14,469	1,079
7 lb. 12 oz. - 8 lb. 13 oz.	11,870	26.4	10,250	925
8 lb. 14 oz. - 9 lb. 14 oz.	3,152	7.0	2,718	305
9 lb. 15 oz. - 11 lb. 0 oz.	545	1.2	463	57
11 lb. 1 oz. or more	70	0.2	55	9
Not Stated	18	0.0	7	1
<b>1970 Total</b>	<b>44,991</b>	<b>100.0</b>	<b>37,591</b>	<b>3,045</b>

There was a marked difference in immaturity rates among racial groups with the Negroes experiencing a high 15.5 per cent for immature births. This compares unfavorably with the 6.9 per cent immature births experienced by Indians and 7.4 per cent experienced by whites. A more complete breakdown is contained in Table 6.

STILLBIRTHS

The stillbirth rate of 11.5 for 1970 was the lowest on record, bettering the previous low of 11.7 established in 1967. The white racial group had the lowest rate at 10.9, which was closely aligned with past years. It was followed by the Indian group at 11.2 and the Negro group at 16.5. Both of these rates were substantially lower than in previous years.

Table 6 Number of Live Births and Number and Percentage Immature by Race, by Age of Mother, Oklahoma, 1970

Race	Total	Age							
		-15	15-19	20-24	25-29	30-34	35-39	40-44	45+
<b>1970 Total Number*</b>	<b>44,973</b>	<b>143</b>	<b>9,863</b>	<b>18,531</b>	<b>10,463</b>	<b>3,886</b>	<b>1,597</b>	<b>439</b>	<b>39</b>
<b>Immature % Immature</b>	<b>3,654</b>	<b>28</b>	<b>993</b>	<b>1,398</b>	<b>731</b>	<b>311</b>	<b>141</b>	<b>44</b>	<b>5</b>
<b>White Number*</b>	<b>37,584</b>	<b>67</b>	<b>7,552</b>	<b>15,885</b>	<b>9,188</b>	<b>3,267</b>	<b>1,252</b>	<b>335</b>	<b>28</b>
<b>Immature % Immature</b>	<b>2,768</b>	<b>13</b>	<b>665</b>	<b>1,095</b>	<b>608</b>	<b>255</b>	<b>99</b>	<b>27</b>	<b>4</b>
<b>Negro Number*</b>	<b>4,345</b>	<b>61</b>	<b>1,456</b>	<b>1,510</b>	<b>705</b>	<b>331</b>	<b>206</b>	<b>64</b>	<b>9</b>
<b>Immature % Immature</b>	<b>675</b>	<b>13</b>	<b>272</b>	<b>229</b>	<b>86</b>	<b>34</b>	<b>29</b>	<b>10</b>	<b>1</b>
<b>Indian Number*</b>	<b>3,044</b>	<b>15</b>	<b>855</b>	<b>1,136</b>	<b>569</b>	<b>288</b>	<b>139</b>	<b>40</b>	<b>2</b>
<b>Immature % Immature</b>	<b>211</b>	<b>2</b>	<b>56</b>	<b>74</b>	<b>37</b>	<b>22</b>	<b>13</b>	<b>7</b>	<b>-</b>

Table 7 Resident Stillbirths, by Cause of Stillbirth, Oklahoma, 1970

1970 Cause	Number	Per Cent
<b>1970 Total</b>	<b>516</b>	<b>100.0</b>
Causes Determined in Mother, or Related to Pregnancy		
Diabetes Mellitus	9	1.7
Toxemias of Pregnancy	10	1.9
Maternal Ante- and Intrapartum Infection	3	0.6
Difficulties in Labor	13	2.5
Accident or Violence	5	1.0
Other and Ill-Defined Causes in Mother	4	0.8
Other Complications of Pregnancy and Childbirth	30	5.8
Causes Determined in the Fetus, Placenta and Cord		
Placenta and Cord Conditions	199	38.6
Birth Injury Only	7	1.4
Congenital Malformation	48	9.3
Hemolytic Disease	12	2.3
Other Causes Determined in the Fetus	19	3.7
Other and Unspecified Causes	157	30.4

\*18 excluded from total because weight at birth was not specified (7 white, 10 Negro, and 1 Indian).





Table 8 Stillbirth Attendance by Race, Number and Percent, Oklahoma, 1970

Attendance at Birth	Total		White		Negro		Indian	
	No.	%	No.	%	No.	%	No.	%
1970 Total	516	100.0	410	100.0	72	100.0	34	100.0
Physician in Hospital	512	99.2	408	99.5	71	98.6	33	97.1
Physician Not in Hospital	-	-	-	-	-	-	-	-
Midwife	1	0.2	1	0.2	1	1.4	1	-
Other and Unknown	3	0.6	1	0.2	1	1.4	1	2.9

Table 9 Resident Stillbirths, According to Whether Death Occurred Before or During Labor, by Race, Number and Percent, Oklahoma, 1970

Time of Death	Total		White		Negro		Indian	
	No.	%	No.	%	No.	%	No.	%
1970 Total	516	100.0	410	100.0	72	100.0	34	100.0
Before Labor	260	50.4	209	51.0	34	47.2	17	50.0
During Labor	113	21.9	96	23.4	11	15.3	6	17.6
Not Stated	143	27.7	105	25.6	27	37.5	11	32.4

TOTAL DEATHS

The leading causes of death remained the same in 1970 as in the past ten years, with one exception. The category of Bronchitis, Emphysema and Asthma dropped from eighth place in 1969 to ninth place in 1970. It was replaced by Diabetes Mellitus, which moved up from the ninth position.

Of particular interest, is the fact that the Indian group experienced a death rate of only 7.2 during the report year as compared to 10.3 in 1967, 10.3 in 1968, and 10.2 in 1969. One possible explanation is that the Indian population was considerably underestimated in the past due to the reluctance of individuals to indicate that they were Indians on census reports. They would, however, be identified as Indians on death certificates. To lend further credence to this hypothesis, the Indian population "increased" from 64,689 in 1967 to 98,469 in 1970.

DEATHS PER 100,000 POPULATION

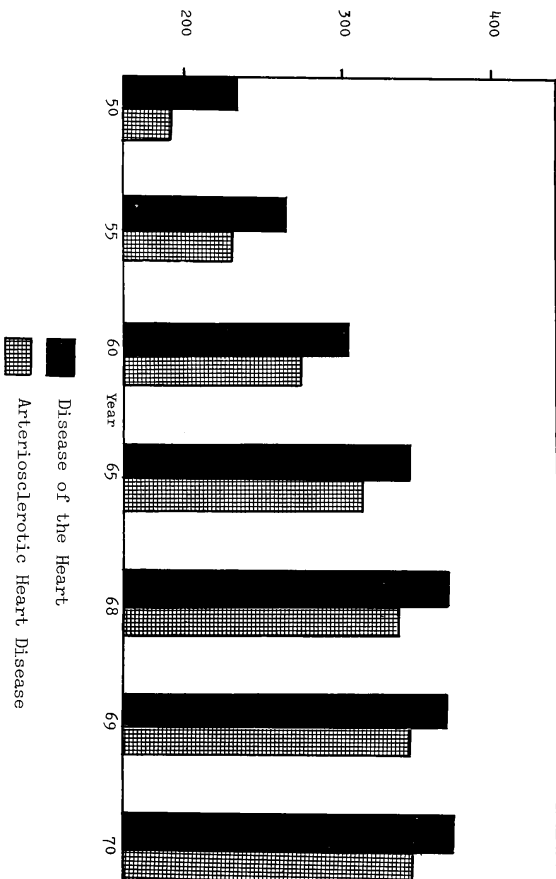


Chart 3  
Death Rates of Disease of the Heart & Arteriosclerotic Heart Disease Oklahoma, 1950 - 1970

### LEADING CAUSES OF DEATH

The leading causes of death remained the same in 1970 as in the past ten years, with one exception. The category of Bronchitis, Emphysema and Asthma dropped from eighth place in 1969 to ninth place in 1970. It was replaced by Diabetes Mellitus, which moved up from the ninth position.

**Heart Disease** - The percentage of deaths caused by disease of the heart (35.8) decreased slightly from the 36.2 per cent experienced in 1969. However, this category remains the largest single killer of residents of Oklahoma.

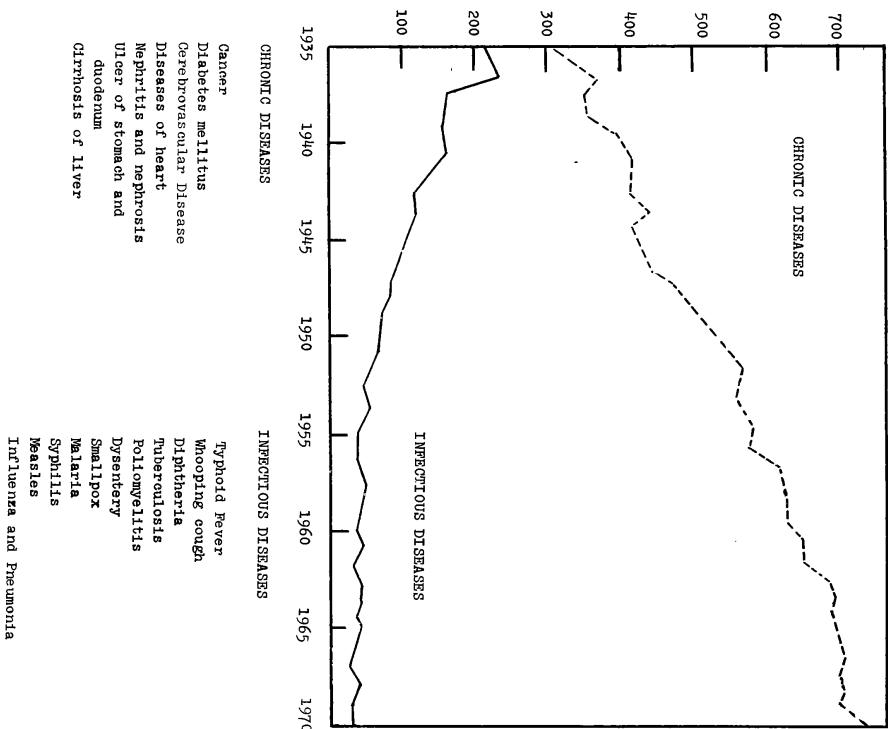
**Malignant Neoplasms** - A total of 4,608 deaths, or 17.2 per cent of all resident deaths, were attributed to malignant neoplasms. During 1970, 59.3 per cent of the cancer deaths occurred to persons 65 years of age and over.

Table 10 Resident Deaths from Malignant Neoplasms, by Primary Site, by Sex, Oklahoma, 1970

Site	Male	Female
Total All Sites - 1970	2,536	2,072
Malignant Neoplasms of:		
Buccal Cavity and Pharynx	67	31
Esophagus	40	16
Stomach	112	99
Intestines, except Rectum	213	253
Rectum	49	47
Larynx	38	2
Trachea, Bronchus, and Lung	753	197
Bone	21	14
Skin	55	39
Breast	3	359
Cervix uteri	-	95
Uterus	279	65
Prostate	615	-
Other and Unspecified Site	122	87
Leukemia	169	133
Lymphosarcoma and Other Neoplasms of Lymphatic and Hematopoietic Tissues		

Chart 4

Death Rates from Certain Chronic and Infectious Diseases, Oklahoma, 1935-1970



Cerebrovascular Disease - 3,292 residents died from cerebrovascular disease in 1970. Of this number, over 86 per cent were age 65 and over.

Accidents - The category of accidents has remained the fourth leading cause of death as it has for the past three decades. More detailed information is available in Public Health Statistics, Part III, Accidental Deaths.

Disease of the Arteries - Deaths from diseases of the arteries continued the long-range rising trend in 1970. In 1947 the death rate was 15.8 per 1,000 residents. By 1957 the rate had risen to 24.3, and in 1967 it reached 26.5. In the three succeeding years, 1968 - 1969 - 1970, it reached 29.9, 31.7, and 32.4, respectively.

Communicable diseases - Communicable diseases have continued to play a smaller role in the cause of death, just as the chronic diseases have continued to rise. Numbers and rates of major communicable diseases can be found in the appendix to this report.

#### MATERNAL DEATHS

Tables for maternal deaths were developed to encompass the five year period of 1966-1970. This was necessary because the number of occurrences is so small that the rates might vary greatly from year to year. The total number of maternal deaths in 1970 was 12.

Maternal Deaths by Cause, by Race, Number and Rate\*, Oklahoma, 1966-1970.

Table 11

Cause of Death	Total		White		Negro		Indian	
	No.	Rate	No.	Rate	No.	Rate	No.	Rate
All Maternal Causes	57	2.7	42	2.4	12	6.0	3	2.5
Sepsis of Pregnancy and Puerperium (630, 635)	1	0.0	1	0.1	-	-	-	-
Toxemia of Pregnancy and Puerperium (636, 639)	6	0.3	6	0.3	-	-	-	-
Hemorrhage of Pregnancy (632)	2	0.1	-	-	2	0.5	1	0.8
Pregnancy without Sepsis (631.4-.9)	3	0.1	1	0.1	2	1.0	-	-
Pregnancy with Sepsis (631.0-.3)	-	-	-	-	-	-	-	-
Other Complications of Pregnancy (633-634)	4	0.2	4	0.2	-	-	-	-
Abortion without Mention of Sepsis or Toxemia (640.9, 642.9, 642.1, 642.3, 641.9, 643.9, 644.9, 645.9)	2	0.1	1	0.1	-	-	1	0.8
Abortion with Sepsis (640.0, 641.0, 642.0, 643.0, 644.0, 645.0, 640.2, 641.2, 642.2, 643.2, 644.2, 645.2)	3	0.1	2	0.1	1	0.5	-	-
Abortion with Toxemia without Sepsis (640.1, 641.1, 643.1, 645.1)	1	0.0	1	0.1	-	-	-	-
Delivery without Complications (650)	2	0.1	1	0.1	1	0.5	-	-
Hemorrhage of Childbirth (651-653)	4	0.2	4	0.2	-	-	-	-
Sepsis of Childbirth and Puerperium (670, 671, 673)	13	0.6	10	0.6	3	1.5	-	-
Other Complications (654, 662, 672, 674, 678)	16	0.8	11	0.6	4	2.0	1	0.8

\*Number of deaths per 10,000 live births

Table 12 Maternal Deaths, by Cause, by Age, Oklahoma, 1966-1970

Cause of Death	Age						
	Total	15-19	20-24	25-29	30-34	35-44	45+
All Maternal Causes	57	1	12	20	10	8	6
Sepsis of Pregnancy, Childbirth & the Puerperium	14	-	4	5	-	5	-
Toxemias of Pregnancy and the Puerperium	6	-	2	3	1	-	-
Hemorrhage of Pregnancy and Childbirth	6	-	-	3	2	1	-
Abortion without Mention of Sepsis or Toxemia	2	-	-	-	2	-	-
Abortion with Sepsis	4	-	1	2	-	-	1
Other Complications of Pregnancy, Childbirth, and the Puerperium	25	1	5	7	5	2	5

The infant death rate for 1970 was 21.2 deaths per 1,000 live births. This is up slightly from the all-time Oklahoma low of 20.0 established in 1968, and the second lowest rate or 20.5 which was experienced in 1969.

INFANT DEATHS

Table 13 Deaths Under One Year, by Cause, by Race, Number and Rate\*, Oklahoma, 1970

Cause of Death	Total		White		Negro		Indian	
	No.	Rate	No.	Rate	No.	Rate	No.	Rate
1970 Infant Deaths, All Causes	953	21.2	754	20.1	147	33.8	52	17.1
Syphilis and its Sequelae	-	-	-	-	-	-	-	-
Whooping Cough	-	-	-	-	-	-	-	-
Other Infective & Parasitic Diseases	23	0.5	11	0.3	6	1.4	6	2.0
Pneumonia	47	1.0	34	0.9	9	2.1	4	1.3
Other Diseases of the Respiratory System	9	0.2	7	0.2	2	0.5	1	-
Gastro-enteritis and Colitis	1	0.0	-	-	2	0.5	1	0.3
Other Diseases of the Digestive System	7	0.2	6	0.2	-	-	1	0.3
Congenital Malformation	141	3.1	123	3.3	10	2.3	8	2.6
Injury at Birth	19	0.4	17	0.5	2	0.5	-	-
Asphyxia and Atelectasis	306	6.8	252	6.7	41	9.4	13	4.3
Brythrobolastosis	13	0.3	11	0.3	1	0.2	1	0.3
Other Certain Diseases of Early Infancy	125	2.8	95	2.5	25	5.7	5	1.6
Immaturity	122	2.7	101	2.7	18	4.4	3	1.0
Accidents	37	0.8	21	0.6	14	3.2	2	0.7
Other Defined Causes	52	1.2	36	1.0	9	2.1	7	2.3
Symptoms and Ill-Defined Conditions	51	1.1	40	1.1	10	2.3	1	0.3

\*Number per 1,000 live births.

PERINATAL MORTALITY

Perinatal deaths are fetal deaths plus neonatal deaths. There were 1,243 deaths of this nature in 1970, with a perinatal rate of 27.3 per 1,000 total births (live births plus fetal deaths). Additional information regarding perinatal deaths may be found by combining data from Tables 7, 8, 9, 14, and 15.

Table 14  
Deaths Under One Month, by Cause, by Race, Number and Rate\*, Oklahoma, 1970

Cause of Death	Total		White		Negro		Indian	
	No.	Rate	No.	Rate	No.	Rate	No.	Rate
1970 Neonatal Deaths, All Causes	727	16.2	594	15.8	103	23.7	30	9.9
Syphilis and its Sequelae	-	-	-	-	-	-	-	-
Whooping Cough	-	-	-	-	-	-	-	-
Other Infective and Parasitic Diseases	6	0.1	4	0.1	1	0.0	1	0.3
Pneumonia	16	0.4	10	0.3	6	1.4	-	-
Other Diseases of the Respiratory System	1	0.0	1	0.0	-	-	-	-
Gastro-enteritis and Colitis	-	-	-	-	-	-	-	-
Other Diseases of the Digestive System	5	0.1	4	0.1	-	-	1	0.3
Congenital Malformations	88	2.0	79	2.1	5	1.1	4	1.3
Injury at Birth	19	0.4	17	0.5	2	0.1	-	-
Asphyxia and Atelectasis	305	6.8	251	6.7	41	9.4	13	4.3
Erythroblastosis	13	0.3	11	0.3	1	0.1	1	0.3
Other Certain Diseases of Early Infancy	123	2.7	94	2.5	24	5.5	5	1.6
Immaturity	122	2.7	101	2.7	18	4.1	3	1.0
Accidents	4	0.0	3	0.1	-	-	1	0.3
Other Defined Causes	20	0.4	15	0.4	4	0.9	1	0.3
Symptoms and Ill-Defined Conditions	5	0.1	4	0.1	1	0.1	-	-

\*Number per 1,000 live births.

Table 15  
Deaths Under One Month, by Cause, by Age, Oklahoma, 1970

Cause of Death	Age in Days												
	-1	1	2	3	4	5	6	7-13	14-20	21-27			
1970 Neonatal Deaths, All Causes	394	143	76	31	10	12	7	26	21	7			
Syphilis and its Sequelae	-	-	-	-	-	-	-	-	-	-			
Whooping Cough	-	-	-	-	-	-	-	-	-	-			
Other Infective and Parasitic Diseases	-	1	2	1	-	1	1	2	3	-			
Pneumonia	2	4	2	2	-	-	-	-	-	-			
Other Diseases of the Respiratory System	1	-	-	-	-	-	-	-	-	-			
Gastro-enteritis and Colitis	-	-	-	-	-	-	-	-	-	-			
Other Diseases of the Digestive System	1	1	2	-	3	3	2	1	-	3			
Congenital Malformations	35	8	9	5	1	1	2	10	10	3			
Injury at Birth	8	5	3	1	1	3	4	-	1	-			
Asphyxia and Atelectasis	152	77	48	14	1	-	-	4	2	-			
Erythroblastosis	7	4	-	1	-	-	-	1	-	-			
Other Certain Diseases of Early Infancy	94	13	7	3	1	1	2	2	-	-			
Immaturity	88	24	2	3	1	2	-	1	1	2			
Accidents	-	-	6	3	1	1	1	1	1	1			
Other Defined Causes	-	-	-	1	-	-	-	-	-	-			
Symptoms and Ill-Defined Conditions	2	-	-	-	-	-	-	-	2	1			

Table 16  
Deaths at One Through Eleven Months of Age, by Cause  
by Age, Oklahoma, 1970

Cause of Death	Age in Months												
	1-11	1	2	3	4	5	6	7	8-9	10-11	12	1970 Infant Deaths, All Causes	
Syphilis and its Sequelae	-	-	-	-	-	-	-	-	-	-	-	-	226
Whooping Cough	-	-	-	-	-	-	-	-	-	-	-	-	52
Other Infective and Parasitic Diseases	17	6	2	1	2	-	1	3	2	-	-	-	31
Pneumonia	31	13	3	4	1	2	2	1	2	1	3	-	8
Other Diseases of the Respiratory System	8	2	2	2	2	-	-	-	-	-	-	-	1
Gastro-enteritis and Colitis	1	-	-	1	-	-	-	-	-	-	-	-	2
Other Diseases of the Digestive System	2	1	-	-	-	1	-	-	-	-	-	-	53
Congenital Malformations	5	8	14	6	8	4	1	4	6	-	2	-	1
Injury at Birth	-	-	-	-	-	-	-	-	-	-	-	-	1
Asphyxia and Atelectosis	1	-	-	-	-	-	-	1	-	-	-	-	1
Erythroblastosis	-	-	-	-	-	-	-	-	-	-	-	-	2
Other Certain Diseases of Early Infancy	2	-	1	-	-	1	-	-	-	-	-	-	33
Immaturity	-	-	-	-	-	2	2	2	3	-	-	-	33
Accidents	33	7	5	3	4	2	2	2	3	-	-	-	32
Other Defined Causes	32	5	5	1	3	4	2	5	5	-	-	-	46
Symptoms and Ill-Defined Conditions	46	10	14	11	3	5	2	1	-	-	-	-	10

APPENDIX  
BIRTHS AND DEATHS  
1970

Symbols Used in Tables  
 - Number or rate is zero  
 ... Item not applicable  
 0.0 Rate is more than 0 but less than 0.05  
 ---- Data not available

Birth & death rates represent number per 1,000 population  
 Rates of specific causes represent number per 100,000 population  
 Infant & neonatal death rates & stillbirth rates represent number per 1,000 live births  
 Maternal deaths represent number per 10,000 live births











TABLE B. RECORDED BIRTHS, STILLBIRTHS, DEATHS, INFANT AND NEONATAL DEATHS, NUMBER AND RATE, BY COUNTY, OKLAHOMA, 1970

County	BIRTHS		STILLBIRTHS		DEATHS		INFANT DEATHS		NEONATAL DEATHS	
	Number	Rate	Number	Rate	Number	Rate	Number	Rate	Number	Rate
ENTIRE STATE	43,995	17.2	494	11.2	26,061	10.2	926	21.0	708	16.1
Adair	124	8.2	4	32.3	97	6.4	3	24.2	2	16.1
Alfalfa	103	11.2	1	9.7	84	9.2	1	9.6	1	9.6
Atoka	103	16.7	1	9.5	96	9.2	1	9.6	1	9.6
Beckham	290	18.4	3	10.3	236	15.0	6	20.7	6	20.7
Blaine	152	12.9	3	19.7	195	11.5	6	52.6	4	26.3
Bryan	320	12.5	7	21.9	300	11.7	7	21.9	7	21.9
Canadian	142	4.9	1	5.7	249	8.6	1	28.2	1	7.0
Cherokee	175	5.4	1	5.7	218	6.8	1	5.7	1	20.9
Cherokee	175	15.2	1	16.7	188	13.8	1	28.4	1	20.9
Choctaw	252	16.8	1	15.2	203	12.8	7	27.5	4	19.6
Cimarron	57	13.8	1	38	194	9.2	1	17.5	1	17.5
Cleveland	1,143	14.0	11	9.6	524	6.4	22	19.2	17	14.9
Coal	59	10.7	11	10.0	58	6.0	1	16.9	1	18.5
Comanche	3,085	28.5	31	10.0	650	6.0	69	22.4	57	16.9
Cotton	17	11.7	2	11.7	46	16.0	2	29.4	4	23.1
Delaware	620	13.6	6	14.5	479	10.1	4	20.0	4	23.1
Dewey	699	6.2	9	9.0	332	10.3	14	45.0	11	15.7
Ellis	89	0.7	1	11.2	28	5.0	2	22.5	2	22.5
Gartland	1,149	20.6	19	7.8	736	20.3	22	19.1	17	14.8
Grant	829	16.4	10	25.1	322	11.3	7	13.1	6	12.6
Greer	10	1.4	1	2.1	32	4.5	1	8.1	2	4.1
Harmon	59	7.4	1	11.3	113	14.2	4	67.8	3	50.8
Haskell	60	11.7	1	16.7	77	15.0	2	33.3	1	16.7
Haskell	200	10.4	1	7.2	99	12.8	1	13.7	1	13.7
Hughes	721	10.4	1	23.7	239	10.3	4	10.0	4	10.0
Jefferson	71	2.6	1	17.4	249	14.2	1	18.0	1	14.2
Johnston	125	15.9	1	31.3	67	9.4	3	93.8	2	62.5
Kingfisher	701	14.4	10	8.0	108	13.7	4	32.0	4	32.0
Kiowa	219	17.0	4	14.3	584	12.0	15	21.4	14	20.0
Leflore	139	11.1	3	11.1	166	9.4	4	28.8	3	21.6
Lincoln	279	31.5	2	11.1	110	12.2	4	11.1	3	11.1
Logan	179	8.2	3	11.2	190	9.6	2	19.5	1	11.2
Love	155	7.9	2	12.9	213	10.8	1	6.5	2	16.5
McCain	128	9.0	1	7.8	14	2.5	1	7.8	1	7.8
McCurtain	214	7.5	4	18.7	247	8.6	1	28.0	1	23.4
McIntosh	82	0.2	1	5.7	7	5.7	1	500.0	1	23.4
McPherson	69	16.6	1	13.3	138	15.4	4	13.3	3	10.0
Mayes	300	12.9	4	203	16.9	8.7	3	29.4	3	29.4
Murray	4	0.4	1	13.3	1,029	17.3	17	13.0	12	9.2
Muskogee	1,305	21.9	14	10.7	180	8.6	3	32.3	3	32.3
Noble	93	9.3	1	10.8	128	13.1	3	29.4	3	29.4
Nowata	102	10.4	1	9.8	18.6	3	29.4	3	29.4	
Oklahoma	11,938	22.6	132	11.1	5,379	10.2	308	29.8	227	11.4
Oklahoma	11,938	14.9	8	15.2	386	10.9	8	15.2	6	6.1
Ottawa	165	5.5	2	12.1	111	7.9	13	32.9	10	25.3
Pawnee	395	13.3	8	20.3	380	12.8	13	4.2	1	4.2
Pawnee	238	21.0	3	8.3	165	14.6	11	13.0	8	9.5
Pfaffburg	84	16.7	1	13.1	49	8.2	1	15.8	1	15.8
Pottawatomie	933	16.9	1	7.2	544	12.6	13	23.5	15	28.5
Pottawatomie	553	12.8	4	7.2	544	12.6	13	23.5	11	19.9
Pushmataha	119	12.6	1	8.5	117	8.5	2	105.3	2	105.3
Roger Mills	4.3	27.0	1	11.7	200	7.0	9	18.2	5	6.5
Rogers	767	10.4	6	23.0	284	11.3	2	18.2	2	18.2
Seminole	261	4.7	1	6.1	156	16.7	1	23.6	1	21.1
Sequoyah	110	14.7	6	9.4	107	5.6	2	21.6	1	15.6
Shawnee	252	15.7	1	23.4	92	9.4	2	18.4	1	16.8
Stiles	107	8.3	1	9.6	3,648	9.1	135	135	135	135
Tallman	8,026	20.1	77	3.0	1,112	5.1	14	21.3	12	18.3
Tulsa	9.3	15.5	2	10.1	386	9.1	3	30.3	1	20.1
Washington	44	6.7	1	7.6	178	6.4	3	13.0	1	19.0
Washington	99	8.2	2	10.1	148	11.2	5	19.0	5	19.0
Washita	151	15.5	1	10.1	76	6.4	3	13.0	1	19.0
Woodward	23	16.9	2	7.6	220	11.2	5	19.0	5	19.0

TABLE C. RESIDENT DEATHS BY COUNTY, BY RACE, BY SEX, OKLAHOMA, 1970

County	Total		White		Negro		Indian	
	Male	Female	Male	Female	Male	Female	Male	Female
ENTIRE STATE	15,285	11,465	13,786	10,290	1,099	862	400	313
Adair	98	72	83	57	1	1	1	1
Alfalfa	44	44	44	44	1	1	1	1
Atoka	76	65	76	65	1	1	1	1
Beckham	127	103	126	100	1	1	1	1
Blaine	100	97	86	73	1	1	1	1
Bryan	200	158	200	148	1	1	1	1
Canadian	258	151	204	128	1	1	1	1
Cherokee	197	113	140	109	1	1	1	1
Cherokee	287	197	287	169	1	1	1	1
Choctaw	128	106	106	75	1	1	1	1
Cimarron	22	27	22	27	1	1	1	1
Cleveland	282	221	281	219	1	1	1	1
Coal	19	19	19	19	1	1	1	1
Comanche	338	243	292	212	3	3	3	3
Cotton	51	51	51	51	1	1	1	1
Delaware	153	259	146	256	1	1	1	1
Dewey	119	94	105	78	1	1	1	1
Ellis	43	41	41	35	1	1	1	1
Gartland	322	298	308	293	1	1	1	1
Grant	228	153	228	144	1	1	1	1
Greer	62	52	62	51	1	1	1	1
Harmon	55	34	40	34	1	1	1	1
Haskell	64	62	62	60	1	1	1	1
Haskell	143	112	127	96	1	1	1	1
Hughes	116	110	116	110	1	1	1	1
Jefferson	66	56	66	52	1	1	1	1
Johnston	88	88	88	48	1	1	1	1
Kingfisher	337	288	324	271	1	1	1	1
Kiowa	71	103	69	73	1	1	1	1
Leflore	67	38	62	34	1	1	1	1
Lincoln	219	124	184	108	1	1	1	1
Logan	143	115	143	108	1	1	1	1
Love	43	21	39	21	1	1	1	1
McCain	108	73	101	70	1	1	1	1
McCurtain	213	133	170	111	1	1	1	1
McIntosh	93	52	83	52	1	1	1	1
McPherson	92	54	88	52	1	1	1	1
Mayes	156	116	146	107	1	1	1	1
Murray	101	63	96	63	1	1	1	1
Muskogee	446	318	325	225	1	1	1	1
Noble	75	49	66	45	1	1	1	1
Nowata	74	72	74	66	1	1	1	1
Oklahoma	2,160	1,750	2,160	1,750	1	1	1	1
Oklahoma	2,160	206	239	160	1	1	1	1
Ottawa	204	154	185	138	1	1	1	1
Pawnee	269	161	262	157	1	1	1	1
Pawnee	100	93	93	64	1	1	1	1
Pfaffburg	251	172	228	171	1	1	1	1
Pottawatomie	206	159	206	169	1	1	1	1
Pottawatomie	357	249	341	241	1	1	1	1
Pushmataha	91	79	91	54	1	1	1	1
Roger Mills	35	29	34	26	1	1	1	1
Rogers	157	113	149	108	1	1	1	1
Seminole	215	160	180	132	1	1	1	1
Sequoyah	140	122	140	108	1	1	1	1
Shawnee	116	111	116	111	1	1	1	1
Stiles	92	41	92	62	1	1	1	1
Tallman	91	69	77	62	1	1	1	1
Tulsa	1804	1499	1588	1329	1	1	1	1
Washington	120	172	101	161	1	1	1	1
Washington	205	188	188	161	1	1	1	1
Washita	205	172	205	161	1	1	1	1
Woodward	88	54	88	54	1	1	1	1



TABLE II. RESIDENT BIRTHS, DEATHS, BY INTERNATIONAL ABREVIATED LIST OF 50 CAUSES, NUMBER AND RATE, BY RACE, OKLAHOMA, 1970

Resident population, July 1, 1970	Total		White		Negro		Indian	
	Number	Rate	Number	Rate	Number	Rate	Number	Rate
Live Births.....	44,991	17.6	37,591	16.4	4,355	25.3	3,045	30.9
Physician in hospital	44,998	17.6	37,647	16.4	4,325	25.3	3,036	30.9
Physician not in hospital	111	0.4	99	0.4	21	0.4	6	0.4
Deaths (other; or unknown)	516	11.5	410	10.9	72	16.5	34	11.2
Physician in hospital.....	515	11.5	409	10.9	72	16.5	34	11.2
Physician not in hospital.....	1	0.0	1	0.0	0	0.0	0	0.0
Midwife, other; or unknown	1	0.0	1	0.0	0	0.0	0	0.0
Total Deaths.....	26,990	11.1	24,071	10.5	1,961	11.4	713	7.2
Under 1 year.....	21,525	9.2	17,755	8.1	1,172	33.8	51	16.7
Under 1 month.....	722	16.2	594	15.8	103	23.7	30	9.9
Infant fever (001).....	1	0.0	1	0.0	0	0.0	0	0.0
Bacterial dysentery and amoeb. (004-006).....	43	1.7	29	1.3	7	4.1	1	7.1
Bacterial and other diarrhoeal diseases (008, 009).....	57	2.2	44	1.9	8	4.7	5	5.1
Abnormalities of respiratory sys. (010-012).....	13	0.5	9	0.4	2	1.2	2	2.0
Other pneumonias, including late effects (013-019).....	13	0.5	9	0.4	2	1.2	2	2.0
Epidemic typhus (020).....	1	0.0	1	0.0	0	0.0	0	0.0
Diphtheria (032).....	1	0.0	1	0.0	0	0.0	0	0.0
Whooping cough (033).....	1	0.0	1	0.0	0	0.0	0	0.0
Scarlet fever (034).....	1	0.0	1	0.0	0	0.0	0	0.0
Strepptococcal sore throat and scarlet fever (034).....	1	0.0	1	0.0	0	0.0	0	0.0
Measles (051).....	2	0.1	2	0.1	0	0.0	0	0.0
Smallpox (050).....	2	0.1	2	0.1	0	0.0	0	0.0
Mumps (052).....	2	0.1	2	0.1	0	0.0	0	0.0
Typhus and other rickettsioses (080-083).....	12	0.5	9	0.4	3	1.7	0	0.0
Yersinia and its sequelae (090-097).....	12	0.5	9	0.4	3	1.7	0	0.0
All other infectious parasitic diseases (100-199).....	91	3.6	75	3.3	12	5.8	6	6.1
Heart neoplasms (200-209).....	4,608	180.1	4,191	183.1	322	187.3	95	96.5
Benign neoplasms and neoplasms of unspecified nature (210-239).....	50	2.0	40	1.7	10	5.8	22	22.3
Diabetes mellitus (250).....	53	2.0	44	1.9	17	27.3	1	1.0
Alzheimer's disease and other nutritional deficiencies (260-269).....	26	1.0	21	0.9	3	1.7	2	2.0
Ataxias (270).....	45	1.8	40	1.7	4	2.3	1	1.0
Active rheumatic fever (390-392).....	2	0.0	1	0.0	1	0.6	0	0.0
Chronic rheumatic heart disease (393-398).....	95	3.7	88	3.8	5	2.9	2	2.0
Chronic infectious heart disease (400-404).....	32	1.3	28	1.2	2	32.0	12	12.2
Hypertensive heart disease (410-414).....	8,792	350.5	8,256	360.7	536	311.8	179	181.8
Ischemic heart disease (420-429).....	612	23.9	535	23.4	53	30.8	24	28.4
Coronary artery disease (430-438).....	3,292	128.6	3,007	131.4	226	131.5	59	59.9
Influenza (470-474).....	41	1.6	39	1.7	18	27.9	2	2.0
Pneumonia (480-486).....	466	17.4	428	17.4	18	12.8	5	4.1
Bronchitis, emphysema and asthma (490-493).....	1,462	5.7	1,347	5.7	28	15.8	4	4.1
Pneumocystis carinii pneumonia (500-503).....	22	0.9	19	0.8	7	4.1	1	1.0
Peptic ulcer (531-533).....	125	4.9	117	5.1	4	2.3	4	4.1
Appendicitis (540-543).....	348	13.6	298	13.0	28	16.3	22	22.3
Diverticulitis (550-553).....	158	6.2	116	5.1	38	22.1	4	4.1
Rectal and sigmoid diseases (560-563).....	34	1.3	29	1.2	4	2.5	1	1.0
Complication of pregnancy, childbirth, and the puerperium (630-639).....	3	0.1	2	0.1	4	4.1	1	1.0
Amputation (640-645).....	9	0.4	8	0.3	1	0.6	1	1.0
Complication of pregnancy, childbirth, and the puerperium (650-659).....	198	7.7	171	7.4	13	7.6	14	14.2
Birth injury, difficult labor and other anoxic and hypoxic conditions (740-749).....	332	13.0	276	12.1	43	25.0	13	13.2
Other causes of perinatal mortality (750-759).....	224	8.9	201	8.8	44	25.6	9	9.1
760-771.....	397	15.5	333	14.5	44	25.6	20	20.3
772-783.....	2,485	97.1	2,254	98.5	166	96.6	65	66.0
All other diseases (remainder of 240-738).....	832	35.3	744	32.5	59	34.5	27	27.4
Motor vehicle accidents (8810-8823).....	826	35.3	752	32.0	87	39.0	27	27.4
All other accidents (8800-8809, 8825-8849).....	273	10.7	258	11.3	6	3.5	9	9.1
Suicide and self-inflicted injuries (8900-8999).....	247	9.7	159	6.9	68	39.6	20	20.3
All other external causes (9000-9999).....	247	9.7	159	6.9	68	39.6	20	20.3

TABLE III. RESIDENT DEATHS BY INTERNATIONAL ABREVIATED LIST OF 50 CAUSES BY RACE, SEX, AND AGE, OKLAHOMA, 1970

CAUSE OF DEATH	ALL AGES*						UNDER 1 YEAR					
	MALE	FEMALE	MALE	FEMALE	MALE	FEMALE	MALE	FEMALE	MALE	FEMALE	MALE	FEMALE
TOTAL DEATHS, ALL CAUSES.....	13,788	10,290	1,099	862	400	313	454	301	86	61	30	21
TYPHOID FEVER (001).....	1	1	1	1	1	1	1	1	1	1	1	1
BACILLARY DYSENTERY AND AMOEBIASIS (004, 006).....	1	1	1	1	1	1	1	1	1	1	1	1
ENTERITIS AND OTHER BARRIDIAL DISEASES (007-009).....	1	1	1	1	1	1	1	1	1	1	1	1
TUBERCULOSIS OF RESPIRATORY SYSTEM (010-012).....	36	21	6	3	4	3	1	1	3	1	2	1
OTHER TUBERCULOSIS, INCLUDING LATE EFFECTS (013-019).....	4	8	4	2	2	2	1	1	1	1	1	1
DIPHTHERIA (032).....	1	1	1	1	1	1	1	1	1	1	1	1
HOOPIING COUGH (033).....	1	1	1	1	1	1	1	1	1	1	1	1
SCARLET FEVER (034).....	1	1	1	1	1	1	1	1	1	1	1	1
MEASLES (051).....	2	2	2	2	2	2	2	2	2	2	2	2
SMALLPOX (050).....	1	1	1	1	1	1	1	1	1	1	1	1
TYPHUS AND OTHER RICKETTSIOSSES (080-083).....	2	2	2	2	2	2	2	2	2	2	2	2
MALARIA (084).....	1	1	1	1	1	1	1	1	1	1	1	1
SYPHILIS AND ITS SEQUELAE (090-097).....	7	2	1	2	2	2	6	2	2	2	2	1
ALL OTHER INFECTIOUS AND PARASITIC DISEASES (100-199).....	50	25	7	3	4	4	1	1	1	1	1	1
HALLIGANT NEOPLASMS INCLUDING NECROTIC TISSUES OF LYMPHATIC AND HAEMOTOPIC TISSUES (200-209).....	2,322	1,869	174	148	40	55	1	1	1	1	1	1
DIABETES MELLITUS (250).....	22	18	4	6	1	1	1	1	1	1	1	1
ALZHEIMER'S AND OTHER NUTRITIONAL DEFICIENCIES (260-269).....	10	11	1	2	1	1	1	1	1	1	1	1
ATAXIAS (270).....	12	7	3	2	2	2	7	1	2	2	2	1
KETIC RHEUMATIC FEVER (390-392).....	1	1	1	1	1	1	1	1	1	1	1	1
CHRONIC RHEUMATIC HEART DISEASE (393-398).....	135	180	26	29	8	8	2	2	2	2	2	2
HYPERTENSIVE HEART DISEASE (410-414).....	4,979	3,277	306	230	106	73	1	1	1	1	1	1
ISCHEMIC HEART DISEASE (420-429).....	290	245	24	24	13	11	1	1	1	1	1	1
OTHER FORMS OF HEART DISEASE (430-438).....	1,373	1,634	111	119	23	38	1	1	1	1	1	1
CORONARY ARTERY DISEASE (430-438).....	20	19	2	2	2	2	1	1	1	1	1	1
INFLUENZA (470-474).....	326	302	26	22	14	12	1	1	1	1	1	1
PNEUMONIA (480-486).....	352	325	87	81	3	3	1	1	1	1	1	1
BRONCHITIS, EMPHYSEMA AND ASTHMA (490-493).....	1,462	1,347	117	107	1	1	1	1	1	1	1	1
PNEUMOCYSTIS CARINII PNEUMONIA (500-503).....	48	48	6	6	1	1	1	1	1	1	1	1
PEPTIC ULCER (531-533).....	69	69	12	12	1	1	1	1	1	1	1	1
APPENDICITIS (540-543).....	108	108	12	12	1	1	1	1	1	1	1	1
DIVERTICULITIS (550-553).....	61	55	20	18	3	3	1	1	1	1	1	1
RECTAL AND SIGMOID DISEASES (560-563).....	30	2	4	4	1	1	1	1	1	1	1	1
COMPLICATION OF PREGNANCY, CHILD BIRTH, AND THE PUERPERIUM-DELIVERY WITHOUT MORTALITY (630-639).....	89	82	7	6	1	1	6	6	6	6	6	6
AMPUTATION (640-645).....	3	3	1	1	1	1	1	1	1	1	1	1
COMPLICATION OF PREGNANCY, CHILD BIRTH, AND THE PUERPERIUM-DELIVERY WITH MORTALITY (740-749).....	177	99	25	18	5	5	177	98	25	18	8	5
OTHER CAUSES OF PERINATAL MORTALITY (750-759).....	122	79	24	20	7	7	122	79	24	20	7	7
STYPHOID AND ILL-DEFINED CONDITIONS (760-771).....	191	142	24	20	4	4	191	142	24	20	4	4
ALL OTHER DISEASES (REMAINDER OF 240-738).....	1,234	1,020	86	80	42	23	1	1	1	1	1	1
MOTOR VEHICLE ACCIDENTS (8810-8823).....	499	358	50	42	1	1	1	1	1	1	1	1
ALL OTHER ACCIDENTS (8800-8809, 8825-8849).....	235	174	17	17	2	2	1	1	1	1	1	1
SUICIDE AND SELF-INFLICTED INJURIES (8900-8999).....	191	67	19	15	2	2	1	1	1	1	1	1
ALL OTHER EXTERNAL CAUSES (9000-9999).....	111	48	5	4	1	1	1	1	1	1	1	1

TABLE 111. RESIDENT DEATHS BY INTERNATIONAL ABREVIATED LIST OF 50 CAUSES BY RACE, SEX, AND AGE, OKLAHOMA, 1970 (CONTINUED)

CAUSE OF DEATH	1-4 YEARS						5-9 YEARS					
	WHITE		NEGRO		INDIAN		WHITE		NEGRO		INDIAN	
	MALE	FEMALE	MALE	FEMALE	MALE	FEMALE	MALE	FEMALE	MALE	FEMALE	MALE	FEMALE
TOTAL DEATHS, ALL CAUSES.....	72	46	7	10	9	3	47	36	4	6	3	
TYPHOID FEVER (001).....												
BACILLARY DYSENTERY AND ANDERIASIS (004,006)												
ENTERIC AND OTHER DIARRHOEAL DISEASES												
TUBERCULOSIS OF RESPIRATORY SYSTEM (010-012)	2	2	1		1							
OTHER TUBERCULOSIS, INCLUDING LATE EFFECTS												
DIOPHTELMIASIS (013-019)												
HOOPING COUGH (033).....												
STREPTOCOCCAL SORE THROAT AND SCARLET FEVER												
HEPHERLITIS AND NEPHROSIS (580-584).....												
ACUTE POLYOMELITIS (040-043).....												
SMALLPOX (090).....												
MEASLES (095).....												
TYPHUS AND OTHER RICKETTSIOSES (080-083).....												
MALARIA (104).....												
SYPHILIS AND ITS SEQUELAE (090-097).....												
ALL OTHER INFECTIVE AND PARASITIC DISEASES	2	2			1		3	1				
MALIGNANT NEOPLASMS INCLUDING NEOPLASMS OF												
LYMPHATIC AND HAEMODIODETIC TISSUES	9	3			1		13	8			1	
BEYOND THE SCOPE OF ICD-9												
UNSPECIFIED NATURE (210-239).....												
DIABETES MELLITUS (250).....												
AVITAMINOSES AND OTHER NUTRITIONAL												
DEFICIENCY OF VITAMIN A (260-269).....												
AMENIAS (280-289).....												
NEURITIS (320).....	1						1					
ACUTE RHEUMATIC FEVER (390-392).....												
CHRONIC RHEUMATIC FEVER (393-398).....												
HYPERTENSIVE HEART DISEASE (400-404).....												
ISCHEMIC HEART DISEASE (410-414).....	1											
OTHER FORMS OF HEART DISEASE (420-429).....												
CEREBROVASCULAR DISEASE (430-438).....												
INFLUENZA (470-474).....												
PNEUMONIA (480-486).....	2											
BRONCHITIS, EMPHYSEMA AND ASTHMA (490-493).....												
APPENDICITIS (540-543).....												
INTESTINAL OBSTRUCTION AND HERNIA												
(550-553,560).....												
CIRRHOSIS OF LIVER (571).....												
NEPHRITIS AND NEPHROSIS (580-584).....	2											
HYPERPLASIA OF PROSTATE (600).....												
PROSTITIS (640-642).....												
OTHER COMPLICATIONS OF URINARY TRACT DISEASES												
AND THE PUERPERIUM-DELIVERY WITHOUT												
MENTION OF COMPLICATION (630-639 650-678)	8											
CONGENITAL ANOMALIES (740-759).....												
51 ANOMALY OF DEVELOPMENT AND OTHER												
AND HYPoxic CONDITION												
(764-768 772,776).....												
OTHER CAUSES OF PERINATAL MORTALITY												
(760-763 769-771 773-775 777-779).....												
SYMPTOMS AND ILL-DEFINED CONDITIONS (780-796)	2	3					9	4				
ALL OTHER DISEASES (REMAINDER OF 240-781).....	12	6	1	2			10	2				
ALL OTHER ACCIDENTS (8810-8823).....	22	10	2	3			11	5				
SUICIDE AND SELF-INFLICTED INJURIES												
(890-899).....	1	1					2	1				
ALL OTHER EXTERNAL CAUSES (E960-E999).....												

TABLE 111. RESIDENT DEATHS BY INTERNATIONAL ABREVIATED LIST OF 50 CAUSES BY RACE, SEX, AND AGE, OKLAHOMA, 1970 (CONTINUED)

CAUSE OF DEATH	10-14 YEARS						15-19 YEARS					
	WHITE		NEGRO		INDIAN		WHITE		NEGRO		INDIAN	
	MALE	FEMALE	MALE	FEMALE	MALE	FEMALE	MALE	FEMALE	MALE	FEMALE	MALE	FEMALE
TOTAL DEATHS, ALL CAUSES.....	58	29	10	3	3	2	165	71	18	9	12	4
TYPHOID FEVER (001).....												
BACILLARY DYSENTERY AND ANDERIASIS (004,006)												
ENTERIC AND OTHER DIARRHOEAL DISEASES												
TUBERCULOSIS OF RESPIRATORY SYSTEM (010-012)												
OTHER TUBERCULOSIS, INCLUDING LATE EFFECTS												
DIOPHTELMIASIS (013-019)												
HOOPING COUGH (033).....												
STREPTOCOCCAL SORE THROAT AND SCARLET FEVER												
HEPHERLITIS AND NEPHROSIS (580-584).....												
ACUTE POLYOMELITIS (040-043).....												
SMALLPOX (090).....												
MEASLES (095).....												
TYPHUS AND OTHER RICKETTSIOSES (080-083).....												
MALARIA (104).....												
SYPHILIS AND ITS SEQUELAE (090-097).....												
ALL OTHER INFECTIVE AND PARASITIC DISEASES												
MALIGNANT NEOPLASMS INCLUDING NEOPLASMS OF												
LYMPHATIC AND HAEMODIODETIC TISSUES	10	8					9	10				
BEYOND THE SCOPE OF ICD-9												
UNSPECIFIED NATURE (210-239).....												
DIABETES MELLITUS (250).....												
AVITAMINOSES AND OTHER NUTRITIONAL												
DEFICIENCY OF VITAMIN A (260-269).....												
AMENIAS (280-289).....												
NEURITIS (320).....												
ACUTE RHEUMATIC FEVER (390-392).....												
CHRONIC RHEUMATIC FEVER (393-398).....												
HYPERTENSIVE HEART DISEASE (400-404).....												
ISCHEMIC HEART DISEASE (410-414).....	1											
OTHER FORMS OF HEART DISEASE (420-429).....												
CEREBROVASCULAR DISEASE (430-438).....												
INFLUENZA (470-474).....												
PNEUMONIA (480-486).....												
BRONCHITIS, EMPHYSEMA AND ASTHMA (490-493).....												
APPENDICITIS (540-543).....												
INTESTINAL OBSTRUCTION AND HERNIA												
(550-553,560).....												
CIRRHOSIS OF LIVER (571).....												
NEPHRITIS AND NEPHROSIS (580-584).....	1											
HYPERPLASIA OF PROSTATE (600).....												
PROSTITIS (640-642).....												
OTHER COMPLICATIONS OF URINARY TRACT DISEASES												
AND THE PUERPERIUM-DELIVERY WITHOUT												
MENTION OF COMPLICATION (630-639 650-678)												
CONGENITAL ANOMALIES (740-759).....												
51 ANOMALY OF DEVELOPMENT AND OTHER												
AND HYPoxic CONDITION												
(764-768 772,776).....												
OTHER CAUSES OF PERINATAL MORTALITY												
(760-763 769-771 773-775 777-779).....												
SYMPTOMS AND ILL-DEFINED CONDITIONS (780-796)	9	6	1	2			15	5				
ALL OTHER DISEASES (REMAINDER OF 240-781).....	14	8	3	3			21	11				
ALL OTHER ACCIDENTS (8810-8823).....	21	11	3	5			40	31				
SUICIDE AND SELF-INFLICTED INJURIES												
(890-899).....	1	1					6	4			2	
ALL OTHER EXTERNAL CAUSES (E960-E999).....												

TABLE III. RESIDENT DEATHS BY INTERNATIONAL ABBREVIATED LIST OF 50 CAUSES BY RACE, SEX, AND AGE, OKLAHOMA, 1970 (CONTINUED)

CAUSE OF DEATH	20-24 YEARS						25-34 YEARS					
	WHITE		NEGRO		INDIAN		WHITE		NEGRO		INDIAN	
	MALE	FEMALE	MALE	FEMALE	MALE	FEMALE	MALE	FEMALE	MALE	FEMALE	MALE	FEMALE
TOTAL DEATHS, ALL CAUSES.....	193	65	24	12	18	13	266	118	37	14	19	13
TYPHOID FEVER (001).....	-	-	-	-	-	-	-	-	-	-	-	-
BACILLARY DYSENTERY AND AMEBIASIS (004-006).....	-	-	-	-	-	-	-	-	-	-	-	-
ENTERITIS AND OTHER DIARRHOEAL DISEASES (008-009).....	-	-	-	-	-	-	-	-	-	-	-	-
TUBERCULOSIS OF RESPIRATORY SYSTEM (010-012).....	-	-	-	-	-	-	-	-	-	-	-	-
OTHER TUBERCULOSIS, INCLUDING LATE EFFECTS OF PHOTOTHERAPY (013).....	-	-	-	-	-	-	-	-	-	-	-	-
DIPHTHERIA (022).....	-	-	-	-	-	-	-	-	-	-	-	-
WHOOPING COUGH (031).....	-	-	-	-	-	-	-	-	-	-	-	-
STREPTOCOCCAL SORE THROAT AND SCARLET FEVER (034).....	-	-	-	-	-	-	-	-	-	-	-	-
MENINGOCOCCAL INFECTION (036).....	-	-	-	-	-	-	-	-	-	-	-	-
ACUTE POLYOMYELITIS (040-043).....	-	-	-	-	-	-	-	-	-	-	-	-
SHALLPOX (050).....	-	-	-	-	-	-	-	-	-	-	-	-
MEASLES (051).....	-	-	-	-	-	-	-	-	-	-	-	-
TYPHUS AND OTHER RICKETTSIOSES (080-083).....	-	-	-	-	-	-	-	-	-	-	-	-
MALARIA (084).....	-	-	-	-	-	-	-	-	-	-	-	-
SYPHILIS AND ITS SEQUELAE (090-097).....	-	-	-	-	-	-	-	-	-	-	-	-
ALL OTHER INFECTIVE AND PARASITIC DISEASES (REMAINER OF 000-136).....	-	-	-	-	-	-	-	-	-	-	-	-
MALIGNANT NEOPLASMS, INCLUDING NEOPLASMS OF LYMPHATIC AND HAEMATOPOIETIC TISSUES (140-209).....	18	3	2	-	-	-	15	20	-	4	-	1
BENIGN NEOPLASMS AND NEPLASMS OF UNSPECIFIED NATURE (210-239).....	1	-	-	-	-	-	4	3	-	-	-	-
DIABETES MELLITUS (250).....	-	-	-	-	-	-	-	-	-	-	-	-
AVIARIANOSIS AND OTHER NUTRITIONAL DEFICIENCY (260-269).....	-	-	-	-	-	-	-	-	-	-	-	-
ANAEHIAS (280-285).....	-	-	-	-	-	-	-	-	-	-	-	-
ACTIVE RHEUMATIC FEVER (390-392).....	-	-	-	-	-	-	-	-	-	-	-	-
CHRONIC RHEUMATIC HEART DISEASE (393-398).....	-	-	-	-	-	-	-	-	-	-	-	-
HYPERTENSIVE DISEASE (400-404).....	-	-	-	-	-	-	-	-	-	-	-	-
ISCHEMIC HEART DISEASE (410-414).....	1	1	-	-	-	-	15	5	1	1	-	-
OTHER FORMS OF HEART DISEASE (420-429).....	2	2	-	-	-	-	3	5	2	1	-	-
CEREBROVASCULAR DISEASE (430-438).....	-	-	-	-	-	-	-	-	-	-	-	-
INFLUENZA (470-474).....	1	2	-	-	-	-	3	1	-	-	-	-
PNEUMONIA (480-486).....	-	-	-	-	-	-	-	-	-	-	-	-
BRONCHITIS, EMPHYSEMA AND ASTHMA (490-493).....	-	-	-	-	-	-	-	-	-	-	-	-
PEPTIC ULCER (530-533).....	-	-	-	-	-	-	-	-	-	-	-	-
APPENDICITIS (540-543).....	-	-	-	-	-	-	-	-	-	-	-	-
INTestinal obstruction and hernia (570-579).....	-	-	-	-	-	-	-	-	-	-	-	-
CIRRHOSIS OF LIVER (571).....	2	1	-	-	-	-	4	1	-	2	-	-
NEPHRITIS AND NEPHROSIS (580-584).....	-	-	-	-	-	-	-	-	-	-	-	-
NEPHROSIS OF PROSTATE (600).....	-	-	-	-	-	-	-	-	-	-	-	-
HYPERPLASIA OF PROSTATE (601).....	-	-	-	-	-	-	-	-	-	-	-	-
OTHER COMPLICATION OF PREGNANCY, CHILDBIRTH AND THE Puerperium-delivery without mention of complication (630-639).....	2	5	-	-	-	-	1	2	-	-	-	-
CONGENITAL ANOMALIES (740-759).....	-	-	-	-	-	-	-	-	-	-	-	-
BIRTH INJURY, DIFFICULT LABOR AND OTHER ANOXIC AND HYPOXIC CONDITION (760-763).....	-	-	-	-	-	-	-	-	-	-	-	-
OTHER CAUSES OF PERINATAL MORTALITY (764-768).....	-	-	-	-	-	-	-	-	-	-	-	-
OTHER (769-773).....	-	-	-	-	-	-	-	-	-	-	-	-
OTHER (774-779).....	-	-	-	-	-	-	-	-	-	-	-	-
SYMPTOMS AND ILL-DEFINED CONDITIONS (780-796).....	13	2	-	-	-	-	17	1	2	1	-	-
ALL OTHER DISEASES (REMAINDER OF 000-136).....	93	20	8	2	4	5	70	16	6	2	8	2
ALL OTHER ACCIDENTS (E800-E825-E849).....	36	9	8	2	3	5	62	13	7	4	2	2
SUICIDE AND SELF-INFLICTED INJURIES (E900-E999).....	12	4	1	4	2	1	26	13	12	2	3	1
ALL OTHER EXTERNAL CAUSES (E830-E899).....	-	-	-	-	-	-	-	-	-	-	-	-

TABLE III. RESIDENT DEATHS BY INTERNATIONAL ABBREVIATED LIST OF 50 CAUSES BY RACE, SEX, AND AGE, OKLAHOMA, 1970 (CONTINUED)

CAUSE OF DEATH	35-44 YEARS						45-54 YEARS					
	WHITE		NEGRO		INDIAN		WHITE		NEGRO		INDIAN	
	MALE	FEMALE	MALE	FEMALE	MALE	FEMALE	MALE	FEMALE	MALE	FEMALE	MALE	FEMALE
TOTAL DEATHS, ALL CAUSES.....	470	278	57	36	27	21	1,137	538	99	84	49	35
TYPHOID FEVER (001).....	-	-	-	-	-	-	-	-	-	-	-	-
BACILLARY DYSENTERY AND AMEBIASIS (004-006).....	-	-	-	-	-	-	-	-	-	-	-	-
ENTERITIS AND OTHER DIARRHOEAL DISEASES (008-009).....	-	-	-	-	-	-	-	-	-	-	-	-
TUBERCULOSIS OF RESPIRATORY SYSTEM (010-012).....	-	-	-	-	-	-	-	-	-	-	-	-
OTHER TUBERCULOSIS, INCLUDING LATE EFFECTS OF PHOTOTHERAPY (013).....	-	-	-	-	-	-	-	-	-	-	-	-
DIPHTHERIA (022).....	-	-	-	-	-	-	-	-	-	-	-	-
WHOOPING COUGH (031).....	-	-	-	-	-	-	-	-	-	-	-	-
STREPTOCOCCAL SORE THROAT AND SCARLET FEVER (034).....	-	-	-	-	-	-	-	-	-	-	-	-
MENINGOCOCCAL INFECTION (036).....	-	-	-	-	-	-	-	-	-	-	-	-
ACUTE POLYOMYELITIS (040-043).....	-	-	-	-	-	-	-	-	-	-	-	-
SHALLPOX (050).....	-	-	-	-	-	-	-	-	-	-	-	-
MEASLES (051).....	-	-	-	-	-	-	-	-	-	-	-	-
TYPHUS AND OTHER RICKETTSIOSES (080-083).....	-	-	-	-	-	-	-	-	-	-	-	-
MALARIA (084).....	-	-	-	-	-	-	-	-	-	-	-	-
SYPHILIS AND ITS SEQUELAE (090-097).....	-	-	-	-	-	-	-	-	-	-	-	-
ALL OTHER INFECTIVE AND PARASITIC DISEASES (REMAINER OF 000-136).....	1	-	-	-	-	-	4	4	-	-	-	-
MALIGNANT NEOPLASMS, INCLUDING NEOPLASMS OF LYMPHATIC AND HAEMATOPOIETIC TISSUES (140-209).....	55	84	6	11	2	5	229	221	19	22	3	12
BENIGN NEOPLASMS AND NEPLASMS OF UNSPECIFIED NATURE (210-239).....	3	2	-	-	-	-	13	7	-	-	-	-
DIABETES MELLITUS (250).....	7	5	4	-	-	-	2	7	2	-	-	-
AVIARIANOSIS AND OTHER NUTRITIONAL DEFICIENCY (260-269).....	-	-	-	-	-	-	-	-	-	-	-	-
ANAEHIAS (280-285).....	-	-	-	-	-	-	-	-	-	-	-	-
ACTIVE RHEUMATIC FEVER (390-392).....	-	-	-	-	-	-	-	-	-	-	-	-
CHRONIC RHEUMATIC HEART DISEASE (393-398).....	3	2	-	-	-	-	8	7	-	-	-	-
HYPERTENSIVE DISEASE (400-404).....	113	2	2	1	1	4	389	69	27	18	5	5
ISCHEMIC HEART DISEASE (410-414).....	113	2	6	6	4	4	399	139	27	18	5	5
OTHER FORMS OF HEART DISEASE (420-429).....	13	15	3	3	3	1	40	43	6	9	1	2
CEREBROVASCULAR DISEASE (430-438).....	1	1	-	-	-	-	2	1	-	-	-	-
INFLUENZA (470-474).....	1	3	-	-	-	-	2	1	-	-	-	-
PNEUMONIA (480-486).....	8	1	1	-	-	-	13	7	-	-	-	-
BRONCHITIS, EMPHYSEMA AND ASTHMA (490-493).....	3	2	1	-	-	-	4	4	-	-	-	-
PEPTIC ULCER (530-533).....	3	1	-	-	-	-	7	4	-	-	-	-
APPENDICITIS (540-543).....	3	1	-	-	-	-	4	3	-	-	-	-
INTestinal obstruction and hernia (570-579).....	18	14	4	3	2	1	50	23	2	4	3	4
CIRRHOSIS OF LIVER (571).....	2	1	-	-	-	-	7	3	-	-	-	-
NEPHRITIS AND NEPHROSIS (580-584).....	3	2	-	-	-	-	7	3	-	-	-	-
NEPHROSIS OF PROSTATE (600).....	-	-	-	-	-	-	-	-	-	-	-	-
HYPERPLASIA OF PROSTATE (601).....	-	-	-	-	-	-	-	-	-	-	-	-
OTHER COMPLICATION OF PREGNANCY, CHILDBIRTH AND THE Puerperium-delivery without mention of complication (630-639).....	5	3	-	-	-	-	2	2	-	-	-	-
CONGENITAL ANOMALIES (740-759).....	-	-	-	-	-	-	-	-	-	-	-	-
BIRTH INJURY, DIFFICULT LABOR AND OTHER ANOXIC AND HYPOXIC CONDITION (760-763).....	-	-	-	-	-	-	-	-	-	-	-	-
OTHER CAUSES OF PERINATAL MORTALITY (764-768).....	-	-	-	-	-	-	-	-	-	-	-	-
OTHER (769-773).....	-	-	-	-	-	-	-	-	-	-	-	-
OTHER (774-779).....	-	-	-	-	-	-	-	-	-	-	-	-
SYMPTOMS AND ILL-DEFINED CONDITIONS (780-796).....	44	3	4	4	1	3	118	4	3	1	2	2
ALL OTHER DISEASES (REMAINDER OF 000-136).....	60	28	4	2	1	2	56	18	6	2	1	2
ALL OTHER ACCIDENTS (E800-E825-E849).....	43	9	2	1	1	-	56	15	3	-	-	-
SUICIDE AND SELF-INFLICTED INJURIES (E900-E999).....	19	1	-	-	-	-	25	13	-	-	-	-
ALL OTHER EXTERNAL CAUSES (E830-E899).....	27	14	11	4	4	-	25	9	8	-	-	-

















TABLE V. RESIDENT BIRTHS, DEATHS, AND DEATHS BY IMPORTANT CAUSES, NUMBERS AND RATE BY COUNTY AND RACE, OKLAHOMA, 1970 (CONTINUED)

ESTIMATED POPULATION, JULY 1, 1970	JEFFERSON				JOHNSON				KAY				
	TOTAL	RACE	WH. NEG.	IND.	TOTAL	RACE	WH. NEG.	IND.	TOTAL	RACE	WH. NEG.	IND.	
	NO.	RATE	NO.	NO.	NO.	RATE	NO.	NO.	NO.	RATE	NO.	NO.	
LIVE BIRTHS*	7,125	13.3	91	3	139	17.5	116	7	17	713	14.6	652	17
PHYSICIAN NOT IN HOSPITAL													
PHYSICIAN IN HOSPITAL	95	1.3	91	3	137	19.1	113	7	17	713	14.6	652	17
MIDWIFE, OTHER, OR UNKNOWN	2	0.0	2	0	1	0.1	1	0	1	2	0.0	1	0
STILLBIRTHS*													
PHYSICIAN NOT IN HOSPITAL	2	0.0	2	0	1	0.1	1	0	1	14.0	1.0	1	0
PHYSICIAN IN HOSPITAL	2	0.0	2	0	1	0.1	1	0	1	0.0	0.0	1	0
MIDWIFE, OTHER, OR UNKNOWN													
TOTAL DEATHS													
DEATHS UNDER 1 MONTH*	120	1.6	118	4	144	20.3	133	3	8	625	12.9	595	14
DEATHS UNDER 1 YEAR*	3	0.0	2	1	5	0.7	2	1	2	17	0.3	16	0
DEATHS UNDER 1 MONTH*	3	0.0	2	1	5	0.7	2	1	2	17	0.3	16	0
TYPHOID FEVER (1001)													
AMEBIASIS (1004)													
OTHER DIARRHOEAL DISEASES (1004-0061)													
ENTERITIS AND OTHER AMOEBIASIS (1004-0061)													
TUBERCULOSIS OF RESPIRATORY SYSTEM (1010-012)													
OTHER TUBERCULOSIS, INCLUDING LATE EFFECTS (1010-019)													
OTHER TUBERCULOSIS, INCLUDING LATE EFFECTS (1010-019)													
OTHER TUBERCULOSIS, INCLUDING LATE EFFECTS (1010-019)													
OTHER TUBERCULOSIS, INCLUDING LATE EFFECTS (1010-019)													
OTHER TUBERCULOSIS, INCLUDING LATE EFFECTS (1010-019)													
OTHER TUBERCULOSIS, INCLUDING LATE EFFECTS (1010-019)													
OTHER TUBERCULOSIS, INCLUDING LATE EFFECTS (1010-019)													
OTHER TUBERCULOSIS, INCLUDING LATE EFFECTS (1010-019)													
OTHER TUBERCULOSIS, INCLUDING LATE EFFECTS (1010-019)													
OTHER TUBERCULOSIS, INCLUDING LATE EFFECTS (1010-019)													

TABLE V. RESIDENT BIRTHS, DEATHS, AND DEATHS BY IMPORTANT CAUSES, NUMBERS AND RATE BY COUNTY AND RACE, OKLAHOMA, 1970 (CONTINUED)

ESTIMATED POPULATION, JULY 1, 1970	KINGFISHER				KIOWA				LATIMER			
	TOTAL	RACE	WH. NEG.	IND.	TOTAL	RACE	WH. NEG.	IND.	TOTAL	RACE	WH. NEG.	IND.
	NO.	RATE	NO.	NO.	NO.	RATE	NO.	NO.	NO.	RATE	NO.	NO.
LIVE BIRTHS*	12,857	15.6	176	9	201	15.6	176	9	201	15.6	176	9
PHYSICIAN NOT IN HOSPITAL												
PHYSICIAN IN HOSPITAL	201	1.6	176	9	154	12.2	154	9	154	12.2	154	9
MIDWIFE, OTHER, OR UNKNOWN	200	1.6	176	9	154	12.2	154	9	154	12.2	154	9
STILLBIRTHS*												
PHYSICIAN NOT IN HOSPITAL	1	0.0	1	0	1	0.0	1	0	1	0.0	1	0
PHYSICIAN IN HOSPITAL	1	0.0	1	0	1	0.0	1	0	1	0.0	1	0
MIDWIFE, OTHER, OR UNKNOWN												
TOTAL DEATHS												
DEATHS UNDER 1 MONTH*	129	1.0	112	12	129	1.0	112	12	129	1.0	112	12
DEATHS UNDER 1 YEAR*	2	0.0	2	0	2	0.0	2	0	2	0.0	2	0
DEATHS UNDER 1 MONTH*	2	0.0	2	0	2	0.0	2	0	2	0.0	2	0
TYPHOID FEVER (1001)												
AMEBIASIS (1004)												
OTHER DIARRHOEAL DISEASES (1004-0061)												
ENTERITIS AND OTHER AMOEBIASIS (1004-0061)												
TUBERCULOSIS OF RESPIRATORY SYSTEM (1010-012)												
OTHER TUBERCULOSIS, INCLUDING LATE EFFECTS (1010-019)												
OTHER TUBERCULOSIS, INCLUDING LATE EFFECTS (1010-019)												
OTHER TUBERCULOSIS, INCLUDING LATE EFFECTS (1010-019)												
OTHER TUBERCULOSIS, INCLUDING LATE EFFECTS (1010-019)												
OTHER TUBERCULOSIS, INCLUDING LATE EFFECTS (1010-019)												
OTHER TUBERCULOSIS, INCLUDING LATE EFFECTS (1010-019)												
OTHER TUBERCULOSIS, INCLUDING LATE EFFECTS (1010-019)												
OTHER TUBERCULOSIS, INCLUDING LATE EFFECTS (1010-019)												
OTHER TUBERCULOSIS, INCLUDING LATE EFFECTS (1010-019)												
OTHER TUBERCULOSIS, INCLUDING LATE EFFECTS (1010-019)												
OTHER TUBERCULOSIS, INCLUDING LATE EFFECTS (1010-019)												
OTHER TUBERCULOSIS, INCLUDING LATE EFFECTS (1010-019)												

















