

Miscellaneous Transportation

- Large Trucks
 - Large trucks in statewide crashes
 - Statewide crashes by county and severity..... pp. 76-77
 - Crashes by highway class..... p. 78
 - Number of vehicles involved..... p. 78
 - Drivers in large truck crashes
 - Drivers of large trucks by age and driver condition..... p. 79
 - Contributing factors of drivers in large truck crashes..... p. 80
- School Buses
 - School buses in statewide crashes
 - Statewide crashes by county and severity..... p. 81
 - Crashes by highway class..... p. 82
 - Number of vehicles involved..... p. 82
 - Occupants of school bus crashes by age, injury severity..... p. 83
 - Drivers in school bus crashes
 - Contributing factors of drivers in school bus crashes..... p. 84
- Trains
 - Train involved statewide crashes
 - Statewide crashes by county and severity..... p. 85
 - Crashes by highway class..... p. 86
 - Number of vehicles involved..... p. 86
 - Vehicles and drivers in train involved crashes
 - Vehicles in train involved crashes..... p. 87
 - Contributing factors of vehicle drivers in train crashes..... p. 87
 - Vehicle drivers by age and gender..... p. 87

LARGE TRUCK CRASHES

Large Truck Crashes by County & Crash Injury Severity											
County	Crash Injury Severity										Total Crashes
	Fatal		Serious		Minor		Possible		None		
	OHP	Police	OHP	Police	OHP	Police	OHP	Police	OHP	Police	
Adair					2				4	3	9
Alfalfa					1		2		4		7
Atoka		1	2	1	5	2	1	5	21	22	60
Beaver	1		1		3		2		7		14
Beckham	2				3	1	12		57	9	84
Blaine	1		1		5		2		22	2	33
Bryan	1				1	4	1	9	14	84	114
Caddo	2		7		5		5		36	2	57
Canadian	4	1	4	1	12	5	14	15	94	80	230
Carter	1		2		4	1	6	3	28	27	72
Cherokee			1		1		1		9	4	16
Choctaw	1		3	1	4	1	1	1	13	4	29
Cimarron			2		2		6		8		18
Cleveland		1			3	13	7	15	44	100	183
Coal			1		1		1		7		10
Comanche			1		4	2	5	3	17	31	63
Cotton			2				2		20	1	25
Craig	2		1		8	1	11	2	23	4	52
Creek	1		2	1	11	2	23	2	95	16	153
Custer	1		3		7	1	5	1	47	5	70
Delaware	1			1	6	2	3		21	12	46
Dewey	1		1		3				6		11
Ellis							2		3		5
Garfield	1		1	1	4	3	1	4	13	45	73
Garvin			1		9		9	3	90	7	119
Grady	3		1	1	5	4	8	4	25	20	71
Grant					3		2		7		12
Greer			1						2		3
Harmon							1		4		5
Harper			1		3				9		13
Haskell					3				4		7
Hughes							1		3		4
Jackson							1	2	9	7	19
Jefferson			1		1		1		3		6
Johnston					1		2		12	4	19
Kay	2				1	1	7	2	18	15	46
Kingfisher	1		1		5		3	1	13	9	33
Kiowa					3				7		10
Latimer					2		2		6	1	11
LeFlore	1			1	3	1	7	4	21	18	56
Lincoln			1		12		16	2	45	4	80
Logan	4				3		6	2	34	10	59
Love	1		1		6		1		54	2	65
McClain	3		5		5		13	4	68	19	117

LARGE TRUCK CRASHES

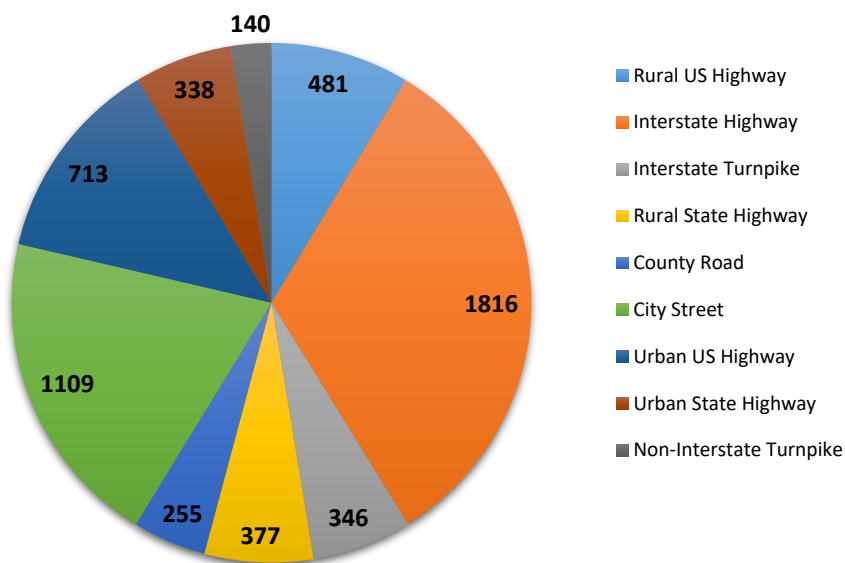
Large Truck Crashes by County & Crash Injury Severity											
County	Crash Injury Severity										Total Crashes
	Fatal		Serious		Minor		Possible		None		
	OHP	Police	OHP	Police	OHP	Police	OHP	Police	OHP	Police	
McCurtain	3		2	1	3		10		23	6	48
McIntosh			1	1	3		9	1	43	10	68
Major	2		2		2		4		7	1	18
Marshall	2				3		3		8	2	18
Mayes	3	1	1		9		5	1	48	19	87
Murray	2				3	2	5		26	10	48
Muskogee	3		2	1		5	2	5	37	45	100
Noble			2		5		5		35		47
Nowata	2		1		2	1	1		6	1	14
Okfuskee					3		5		30		38
Oklahoma	8	4	8	8	46	29	101	66	541	489	1300
Okmulgee			3		6		4	1	17		31
Osage			1		2		1	1	13	1	19
Ottawa	2		3		6		8	1	35	3	58
Pawnee	1		1				3		15		20
Payne	2		1	1	2	3	5	1	23	30	68
Pittsburg	1		1	3	5	3	6	3	40	50	112
Pontotoc	2						5		22	2	31
Pottawatomie					5	1	10	3	29	12	60
Pushmataha			1		2		4		17	1	25
Roger Mills	1								4		5
Rogers	3	1	5	1	22	1	11	6	52	25	127
Seminole					1		5		26	12	44
Sequoyah	2		1		3		6	6	45	20	83
Stephens		1			1	4	1	2	6	18	33
Texas	2		2		1		7	1	17	24	54
Tillman							2		3	1	6
Tulsa	3	5	1	11	27	45	27	72	105	319	615
Wagoner	2	1	1		3	4	4	5	39	33	92
Washington			1	1	2	1	4	1	3	22	35
Washita	1		4		2		3		18		28
Woods					3	1	2		12	3	21
Woodward	1			1	2		1	2	12	14	33
	83	16	93	37	334	144	462	262	2404	1740	5575
Total	99		130		478		724		4144		5575

OHP indicates crashes worked by the Oklahoma Highway Patrol. These crashes are generally on rural roads and highways. Police indicates crashes worked by agencies (police, sheriff, campus police, etc.) other than the Oklahoma Highway Patrol. These crashes are generally worked within municipalities.

LARGE TRUCK CRASHES

Large Truck Crashes Highway Class & Injury Severity						
Highway Class	Injury Severity					Total Crashes
	Fatal	Serious	Minor	Possible	None	
Rural US Highway	21	34	66	73	287	481
Interstate Highway	36	27	123	237	1393	1816
Interstate Turnpike	3	11	38	58	236	346
Rural State Highway	20	10	64	59	224	377
County Road	3	5	27	34	186	255
City Street	4	13	58	108	926	1109
Urban US Highway	5	18	56	88	546	713
Urban State Highway	3	8	29	52	246	338
Non-Interstate Turnpike	4	4	17	15	100	140
Total	99	130	478	724	4144	5575

Large Truck Crashes by Highway Class



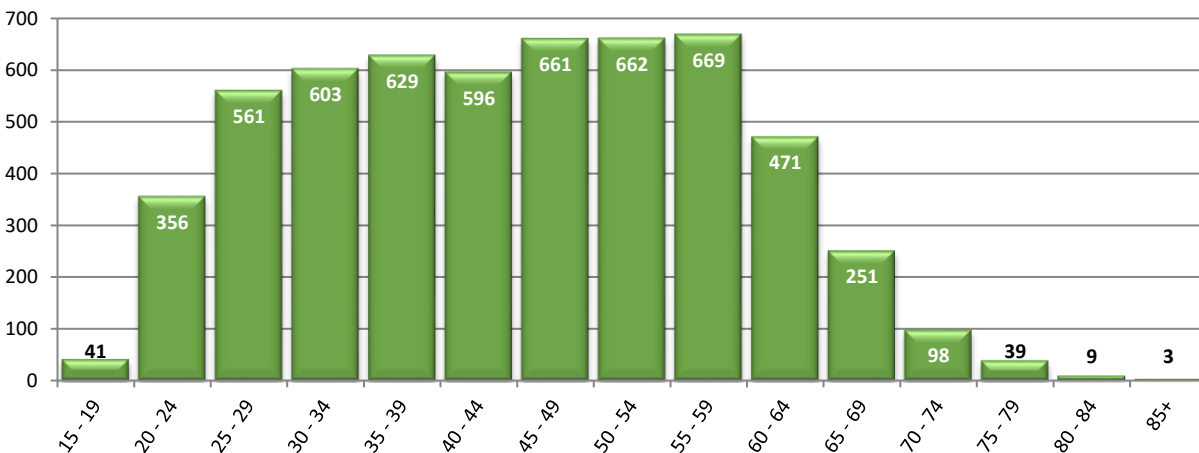
Large Truck Crashes Crash Injury Severity & Number of Vehicles Involved						
Number of Vehicles	Injury Severity					Total Crashes
	Fatal	Serious	Minor	Possible	None	
One Vehicle	17	25	112	138	936	1228
Two Vehicles	62	83	286	478	3021	3930
Three Vehicles	15	13	63	86	166	343
Four or More Vehicles	5	9	17	22	21	74
Total	99	130	478	724	4144	5575

DRIVERS IN LARGE TRUCK CRASHES

Drivers of Large Trucks in Crashes Driver Age & Driver Condition												
Driver Age	Driver Condition											Total Drivers
	Apparently Normal	Alcohol	Illegal Drugs	Medication	Very Tired	Sleepy	Sick	Dizzy/Faint	Emotional	Other	Unknown	
Unknown	11							1	1		391	404
16	5											5
17	9											9
18	10					1						11
19	15					1						16
20 - 24	338	2				3		1			12	356
25 - 29	541		2			6		1	1		10	561
30 - 34	576	5			1	5			2		14	603
35 - 39	603	2	4			2			1	1	16	629
40 - 44	577	4				3		1			11	596
45 - 49	636	2				5		3			15	661
50 - 54	641	3	1			5			2		10	662
55 - 59	649	3	1			2			3	1	10	669
60 - 64	453	2				4				1	11	471
65 - 69	240	2				2			1		6	251
70 - 74	93	1						1			3	98
75 - 79	36					1			1		1	39
80 - 84	9											9
85+	3											3
Total	5445	26	8		1	40		8	12	3	510	6053

Driver/Pedestrian Condition has 13 choices on the *Official Oklahoma Traffic Collision Report*. '02' Drinking-Ability Impaired and '03' Odor of Alcoholic Beverage are combined as Alcohol for this table. Also, if an Officer Affidavit is issued to the driver or a Medical Examiner Report indicates alcohol use, the Driver Condition is Alcohol.

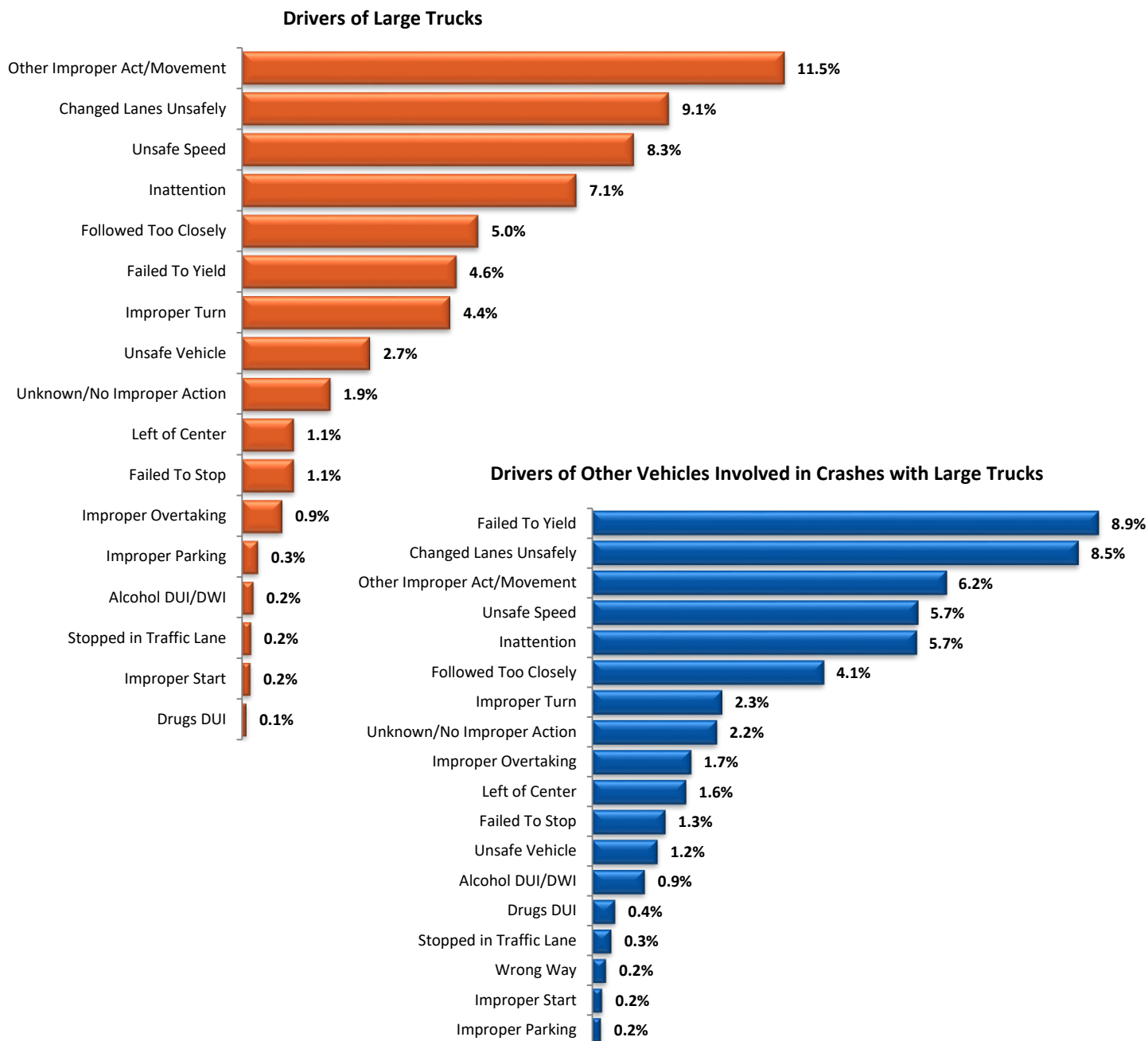
Drivers of Large Trucks Involved in Crashes by Age



Does not include 404 drivers of unknown age.

DRIVERS IN LARGE TRUCK CRASHES

Contributing Factors of Drivers in Large Truck Crashes



* The above results do not include the factor labeled “No Improper Action by Driver.” On the current Oklahoma crash report form, every driver in a crash is assigned a contributing factor for the crash. If a driver is not at fault, “No Improper Action by Driver” is selected. In all crashes, this factor was assigned to 41.2% of large truck drivers and 48.4% of drivers of other vehicles involved in large truck crashes. “Other Improper Act/Movement” includes failure to signal, disregarding warning signal, improper lane use, improper backing, sleepy driver, failure to secure load, and unknown/other movements.

SCHOOL BUS CRASHES

School Bus Crashes County & Crash Injury Severity													
County	Crash Injury Severity												Total Crashes
	Fatal		Serious		Minor		Possible		None		Unknown		
	OHP	Police	OHP	Police	OHP	Police	OHP	Police	OHP	Police	OHP	Police	
Adair					1								1
Bryan										1			1
Caddo										3			3
Canadian			1			1		3	1	6			12
Cherokee						1				1			2
Cleveland						2		1		7			10
Coal										1			1
Comanche								1		2			3
Creek										1			1
Custer										1			1
Delaware										1			1
Dewey					1								1
Garfield										2			2
Garvin										1			1
Kay			1							1	1		3
Kingfisher											1		1
Lincoln			1		1					1			3
Logan										2			2
McClain											1		1
McCurtain					1					1			2
Marshall											1		1
Mayes										1	1		2
Murray										1			1
Muskogee										1	2		3
Okfuskee										1			1
Oklahoma								1	3	40			44
Osage										2			2
Ottawa			1								2		3
Pittsburg				1						1			2
Pontotoc											1		1
Pottawatomie											2		2
Rogers										1	1		2
Stephens											1		1
Tulsa						1		3			21		25
Wagoner								1			5		6
Washington						1					1		2
Washita										1			1
Total	0	0	4	1	4	6	1	9	23	103	0	0	151
	0		5		10		10		126		0		151

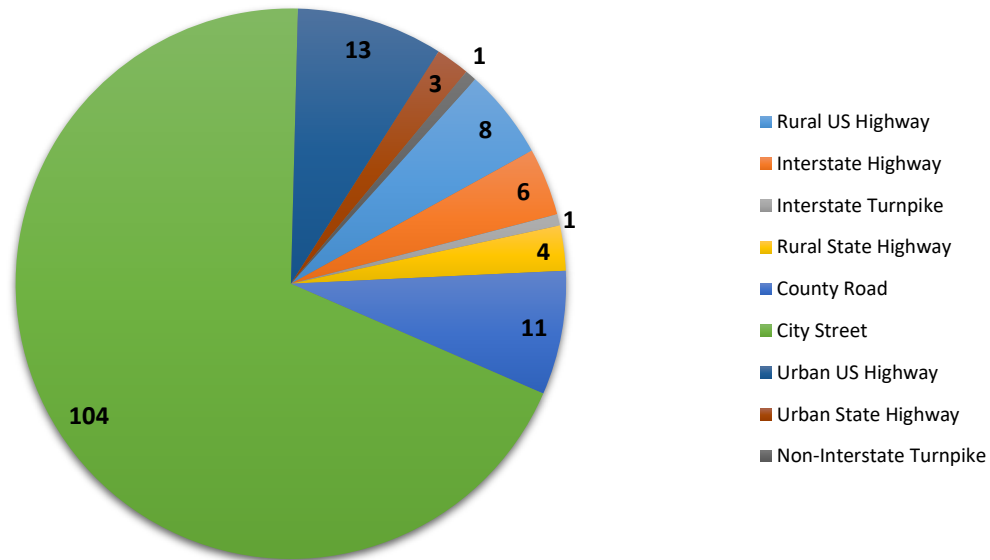
OHP indicates crashes worked by the Oklahoma Highway Patrol. These crashes are generally on rural roads and highways. Police indicates crashes worked by agencies (police, sheriff, campus police, etc.) other than the Oklahoma Highway Patrol. These crashes are generally worked within municipalities.

Unlisted counties had no school bus crashes.

SCHOOL BUS CRASHES

School Bus Crashes Highway Class & Injury Severity						
Highway Class	Injury Severity					Total Crashes
	Fatal	Serious	Minor	Possible	None	
Rural US Highway		1	3		4	8
Interstate Highway					6	6
Interstate Turnpike		1				1
Rural State Highway			1		3	4
County Road		2	1		8	11
City Street		1	5	8	90	104
Urban US Highway					13	13
Urban State Highway				1	2	3
Non-Interstate Turnpike				1		1
Total	0	5	10	10	126	151

School Bus Crashes by Highway Class

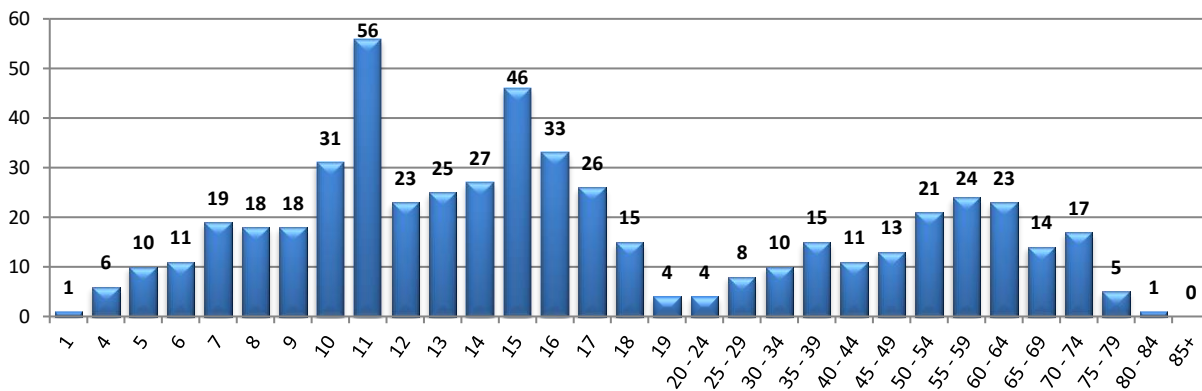


School Bus Crashes Crash Injury Severity & Number of Vehicles Involved						
Number of Vehicles	Injury Severity					Total Crashes
	Fatal	Serious	Minor	Possible	None	
One Vehicle		2	1	1	3	7
Two Vehicles		3	8	7	113	131
Three Vehicles			1	1	9	11
Four or More Vehicles				1	1	2
Total	0	5	10	10	126	151

SCHOOL BUS CRASHES

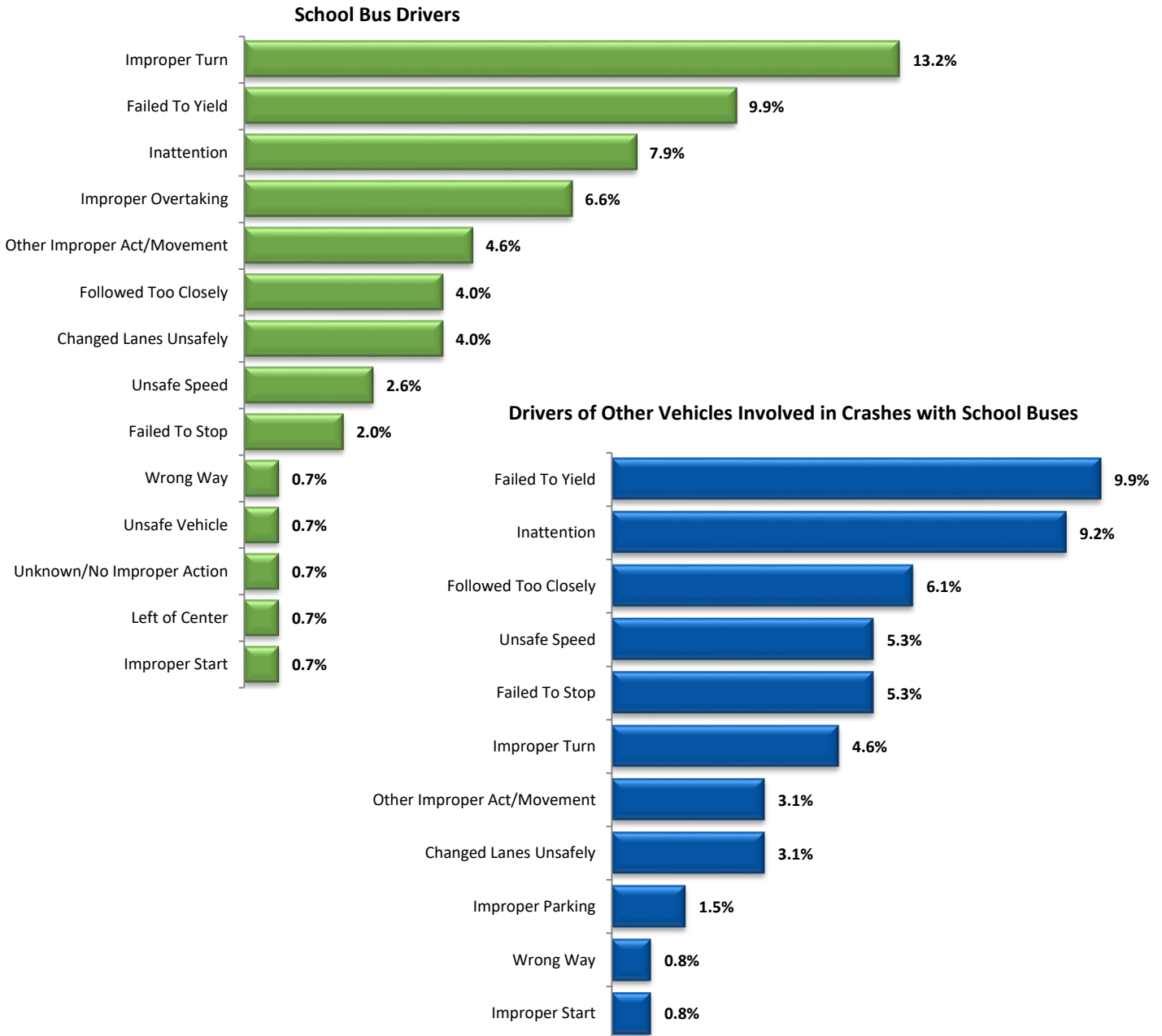
Occupants of School Buses in Crashes Age, Position, & Injury Severity													
Age	Driver						Passenger						Total
	Fatal	Serious	Minor	Possible	None	Unknown	Fatal	Serious	Minor	Possible	None	Unknown	
Unknown						1				1	53	3	58
1											1		1
4											6		6
5											10		10
6											11		11
7											19		19
8											18		18
9											18		18
10											31		31
11											55	1	56
12											23		23
13								1	1		23		25
14									1	5	18	3	27
15										10	27	9	46
16										3	25	5	33
17										4	17	5	26
18										1	11	3	15
19											4		4
20 - 24					3						1		4
25 - 29			1		5						2		8
30 - 34					6	2			1		1		10
35 - 39			1		13	1							15
40 - 44				1	8						1	1	11
45 - 49					10					1	2		13
50 - 54				1	16	2			1		1		21
55 - 59					22	1					1		24
60 - 64		1			19	1					2		23
65 - 69					12	1					1		14
70 - 74			1		16								17
75 - 79				1	4								5
80 - 84			1										1
85+													0
Total	0	1	4	3	134	9	0	1	4	25	382	30	593
	151						442						

School Bus Occupants by Age



DRIVERS IN SCHOOL BUS CRASHES

Contributing Factors of Drivers in School Bus Crashes



* The above results do not include the factor labeled “No Improper Action by Driver.” On the current Oklahoma crash report form, every driver in a crash is assigned a contributing factor for the crash. If a driver is not at fault, “No Improper Action by Driver” is selected. In all crashes, this factor was assigned to 41.7% of school bus drivers and 50.4% of drivers of other vehicles involved in crashes with school buses. “Other Improper Act/Movement” includes failure to signal, disregarding warning signal, improper lane use, improper backing, sleepy driver, failure to secure load, and unknown/other movements.

TRAIN INVOLVED CRASHES – STATEWIDE

Train Involved Crashes County & Crash Injury Severity												
County	Crash Injury Severity										Total Crashes	
	Fatal		Serious		Minor		Possible		None			
	OHP	Police	OHP	Police	OHP	Police	OHP	Police	OHP	Police		
Alfalfa										1		1
Canadian	1											1
Carter											1	1
Cleveland									1		1	2
Creek											1	1
Custer											1	1
Ellis										1		1
Garfield										1	1	2
Johnston								1				1
Kay											1	1
Kingfisher			1		1							2
LeFlore				1								1
McCurtain										1		1
Marshall										1		1
Mayes										1		1
Muskogee										1		1
Oklahoma				1					1		4	6
Pawnee						1						1
Pittsburg								1				1
Rogers									1			1
Sequoyah										1		1
Tulsa									1			1
Wagoner						1						1
Washita										1		1
	1	0	1	2	3	0	2	4	9	10		32
Total	1		3		3		6		19			32

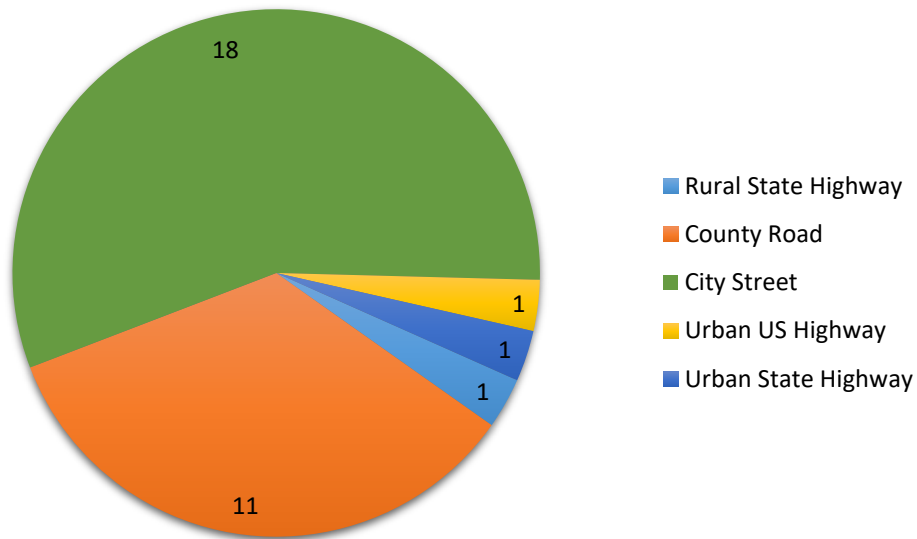
OHP indicates crashes worked by the Oklahoma Highway Patrol. These crashes are generally on rural roads and highways. Police indicates crashes worked by agencies (police, sheriff, campus police, etc.) other than the Oklahoma Highway Patrol. These crashes are generally worked within municipalities.

Unlisted counties had no train crashes.

TRAIN INVOLVED CRASHES – STATEWIDE

Train Involved Crashes by Highway Class & Injury Severity						
Highway Class	Injury Severity					Total Crashes
	Fatal	Serious	Minor	Possible	None	
Rural State Highway					1	1
County Road	1	1	3	2	4	11
City Street		2		4	12	18
Urban US Highway					1	1
Urban State Highway					1	1
Total	1	3	3	6	19	32

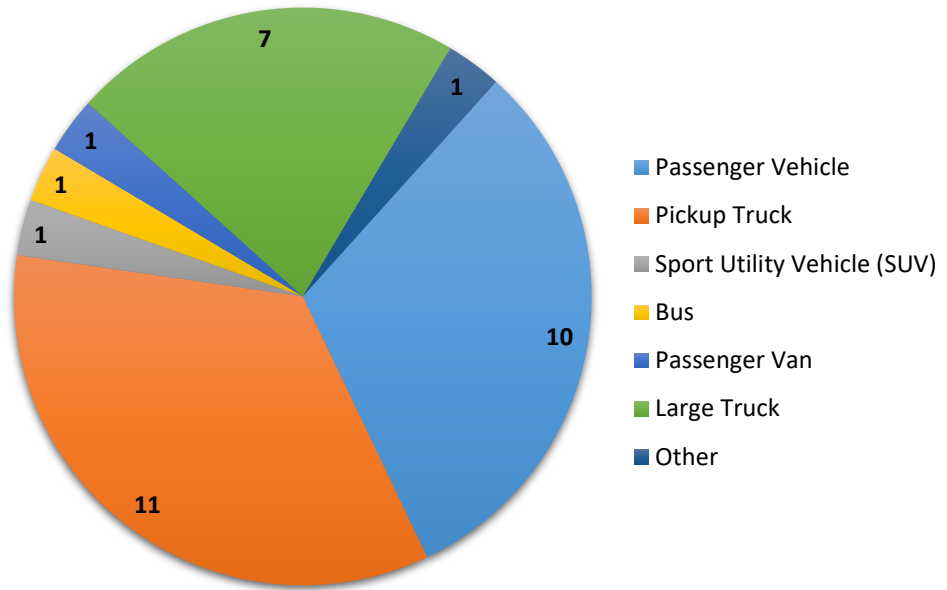
Train Involved Crashes by Highway Class



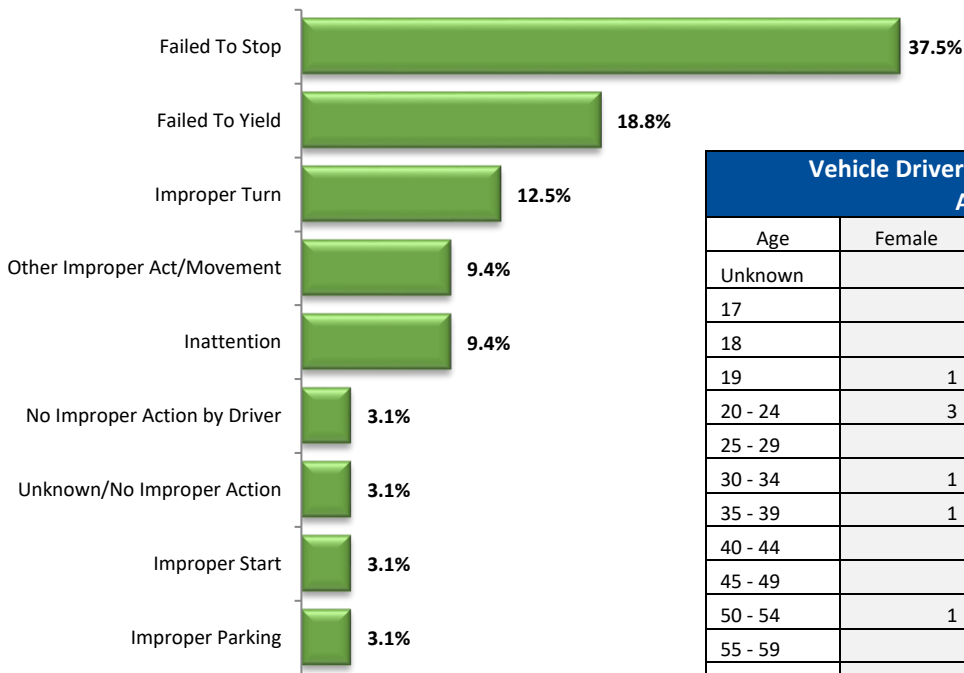
Train Involved Crashes Crash Injury Severity & Number of Vehicles Involved						
Number of Vehicles	Injury Severity					Total Crashes
	Fatal	Serious	Minor	Possible	None	
One Vehicle	1	3	3	6	19	32
Two Vehicles						
Three Vehicles						
Not Stated						
Total	1	3	3	6	19	32

VEHICLES & DRIVERS IN TRAIN INVOLVED CRASHES

Vehicles in Train Involved Crashes



Contributing Factor of Vehicle Drivers in Train Involved Crashes



Vehicle Drivers in Train Involved Crashes Age & Gender				
Age	Female	Male	Unknown	Total
Unknown			3	3
17		2		2
18		1		1
19	1			1
20 - 24	3	3		6
25 - 29				
30 - 34	1	1		2
35 - 39	1	3		4
40 - 44		1		1
45 - 49		2		2
50 - 54	1	2		3
55 - 59		2		2
60 - 64		2		2
65 - 69		1		1
70 - 74				
75 - 79				
80 - 84		2		2
85+				
Total	7	22	3	32