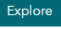
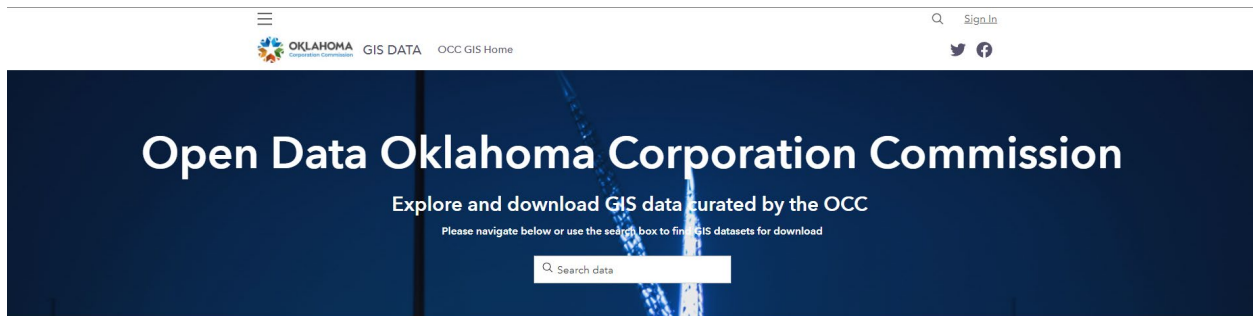


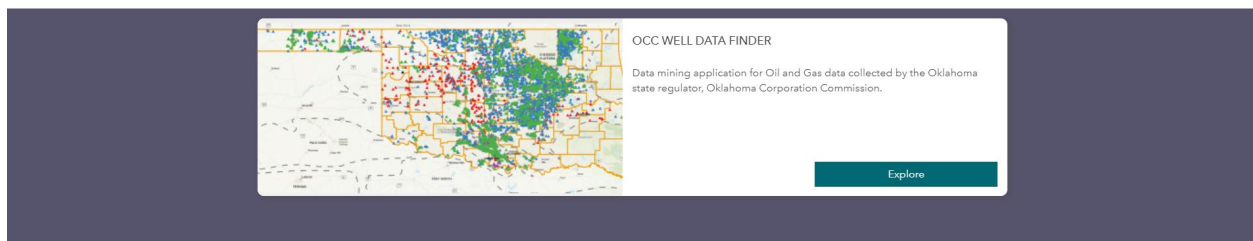
ESRI OCC WELL DATA FINDER Instructions

BROWSER & URL

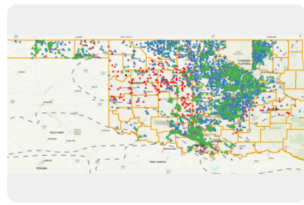
- For the best experience, please view the OCC WELL DATA FINDER App on a desktop or laptop computer and use a supported browser (Chrome, Edge, or Safari). Mobile devices do work but screen size will limit popups and other features.
- Users should navigate to <https://gisdata-occokc.opendata.arcgis.com/>.
- On the Open Data website, please scroll down to the **OCC WELL DATA FINDER** app and click explore  :



OCC WEBAPPS



- Click on **Open Application**  and accept the terms of service (click **ACCEPT**):



OCC WELL DATA FINDER

Private Member
Oklahoma Corporation Commission

Open Application

Summary

Data mining application for Oil and Gas data collected by the Oklahoma state regulator, Oklahoma Corporation Commission.

Layer-rich searchable mapping application displaying available well data curated by the Oklahoma Corporation Commission. Multiple outside data sources are included for geologic and hydrogeologic reference (sources cited in item descriptions). Cultural data and political districts also included for convenience.

Looking for something else? See other apps nearby

You may be interested in

Map

Details

Registered App Application

April 20, 2022 Date Updated

April 20, 2022 Published Date

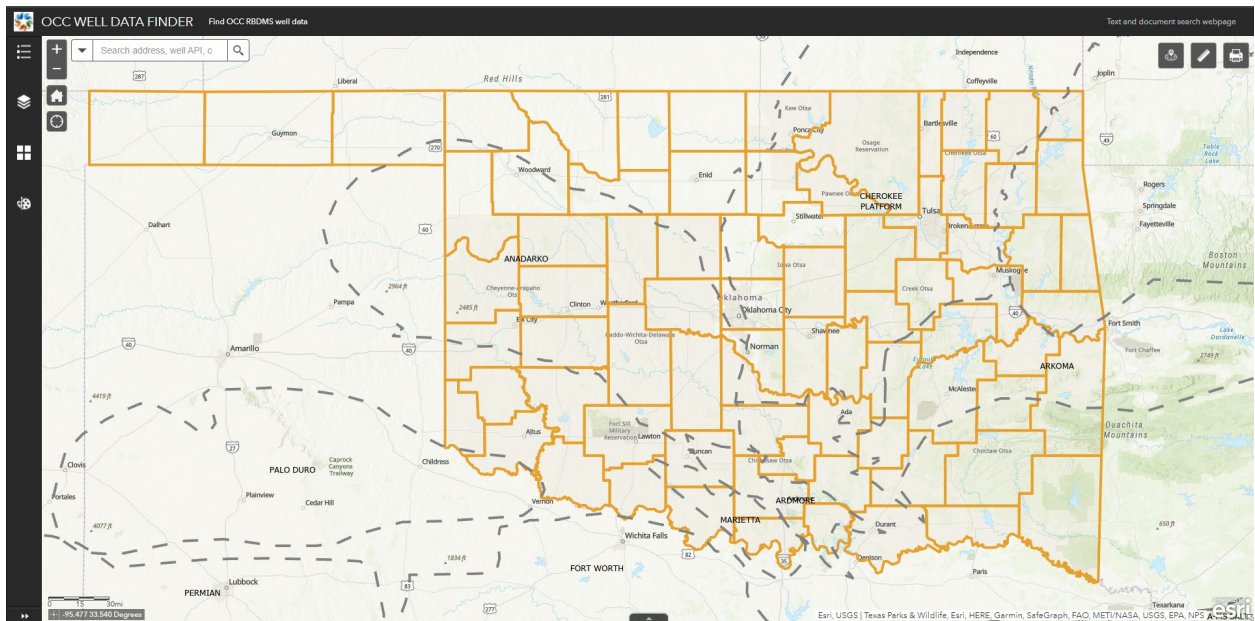
Public Anyone can see this content

Custom License View license details

Relevant Area



- Shown below is the home view with the App open (by default it opens in a new tab):



WEB-APP MENU BUTTONS

Top Left

- On the left side there are menu buttons for:

- Legend menu



- Layer menu



- Basemap choice



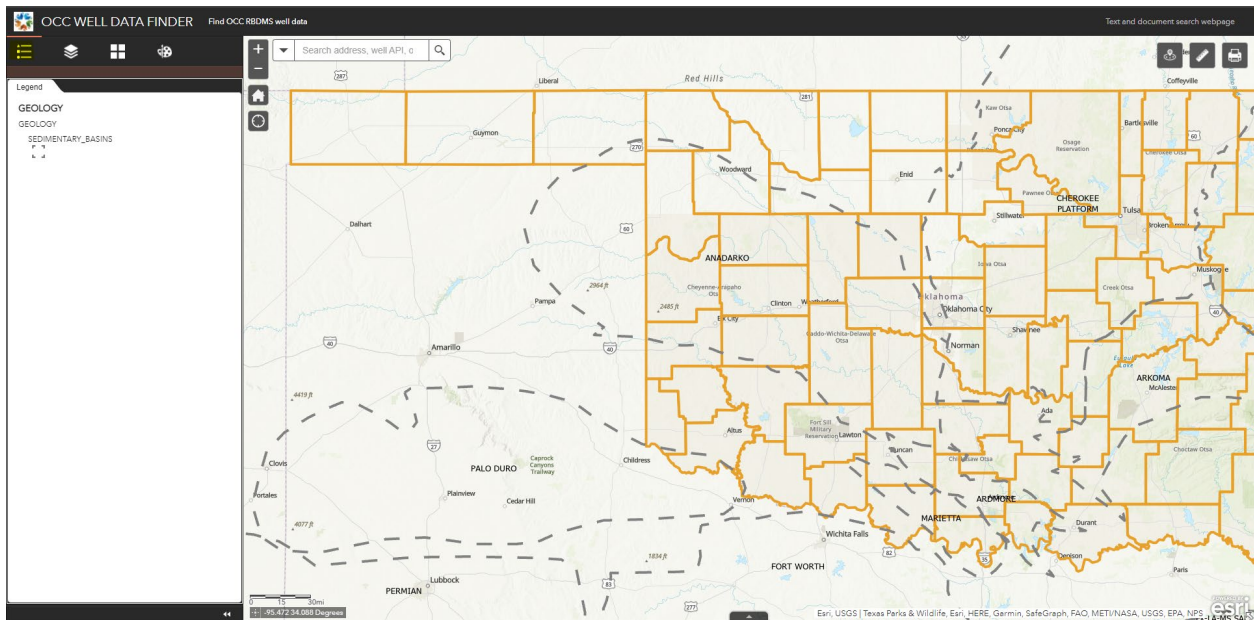
- Select tool



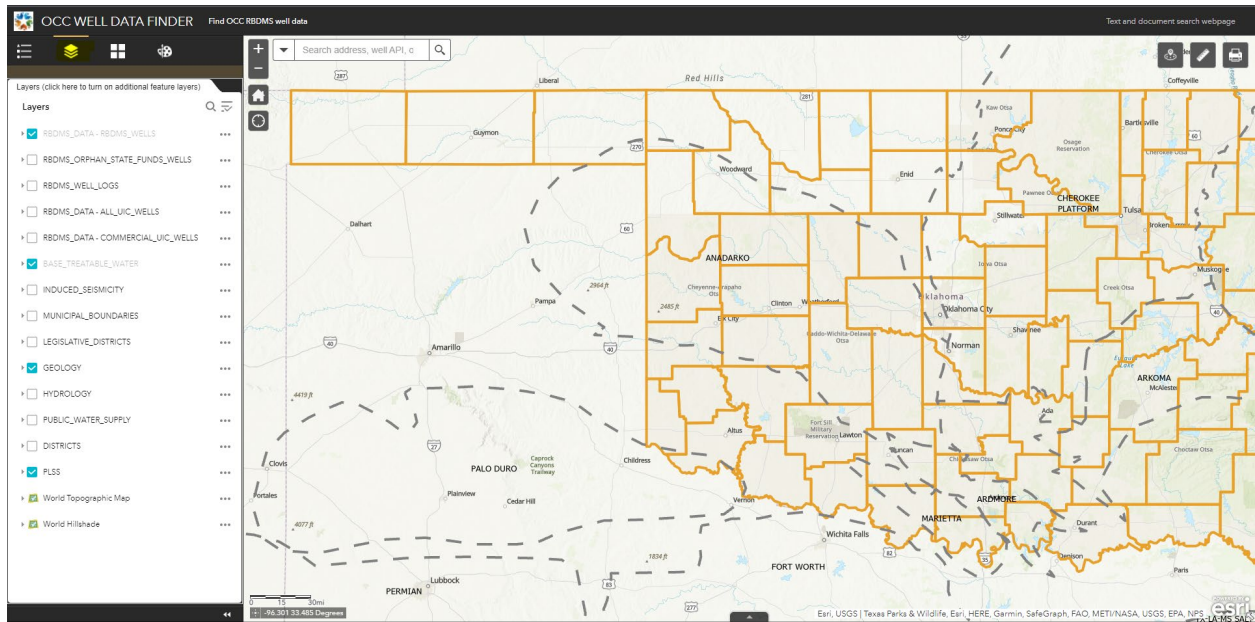
- Drawing tool



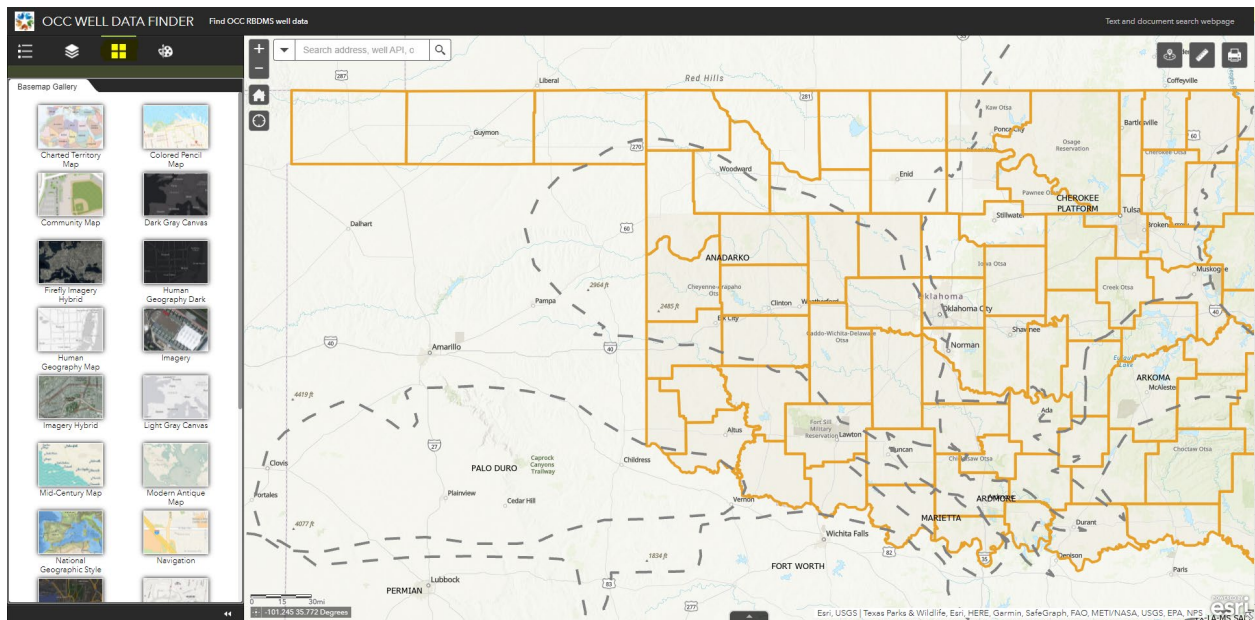
Legend:



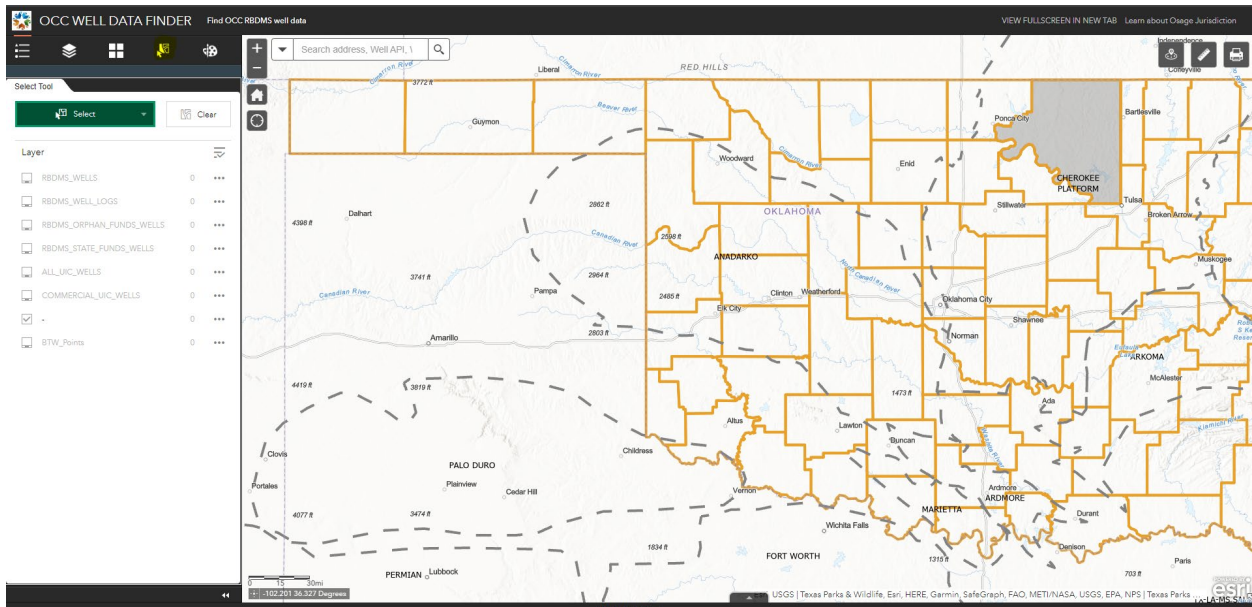
Layers:



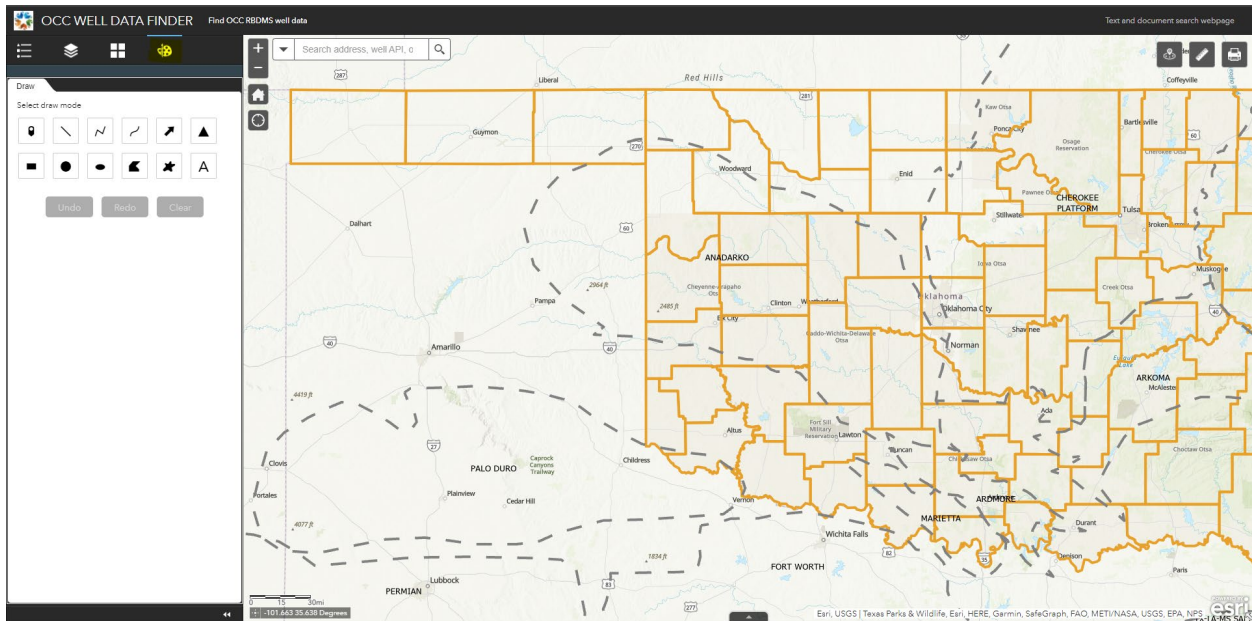
Basemap Choice:



Select Tool:



Drawing Tool:



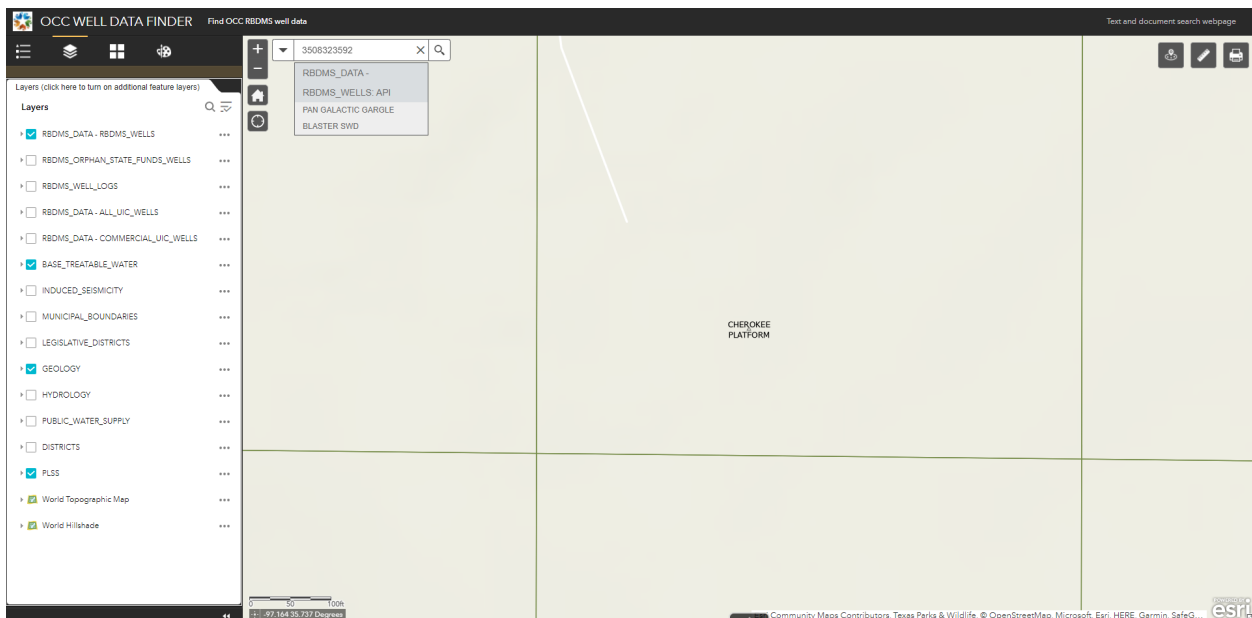
- Wells are on by default and zoom activated. You can zoom into a specific county or township and the wells will appear. Choose the **Layer selector** on the top left to turn on or off any of the layers for the map.

Top Center

- **Multi-search box**



The **search box** will accept a 10-digit API and return the correct well from the well layer which will be visible in the search results below the search bar. When the user enters an API and hits **Enter** the map will zoom to the location of the well. A user can also search an address (or lat/long) and pressing **Enter** will zoom to the approximate location in the state. Section, Township, and Range are also searchable in the format SSTWNRNG (ex. 0612N09W). Please click on any STR search result in the list to zoom to the location.



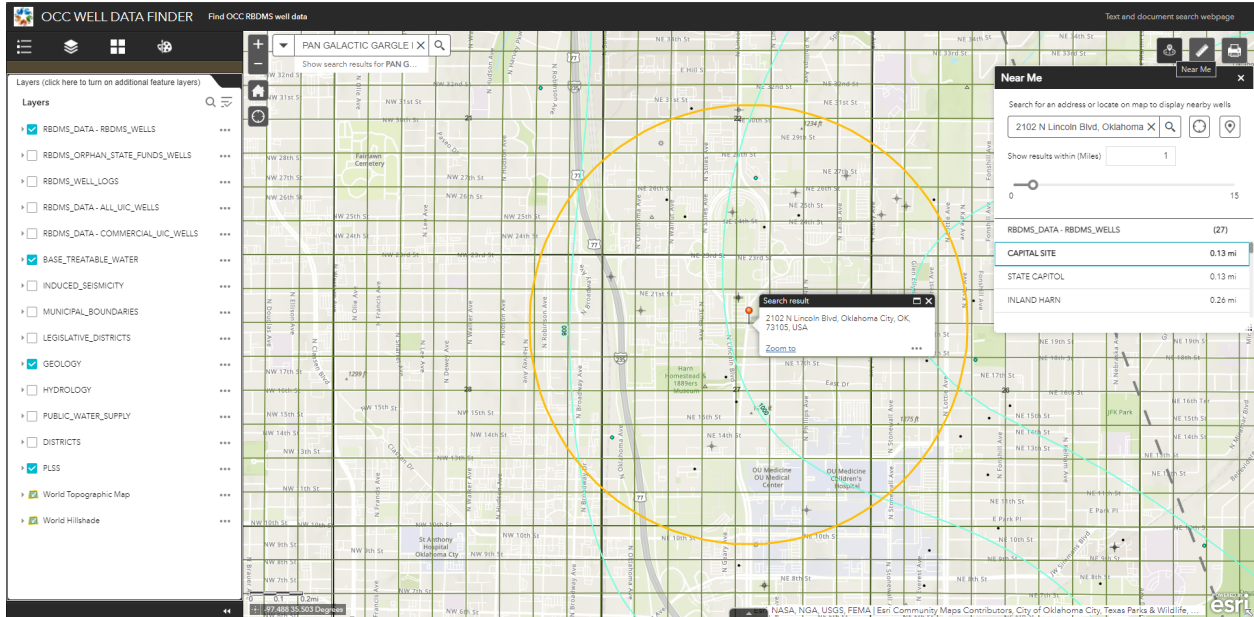
OTHER TOOLS

Top Right

- **Near Me Tool**



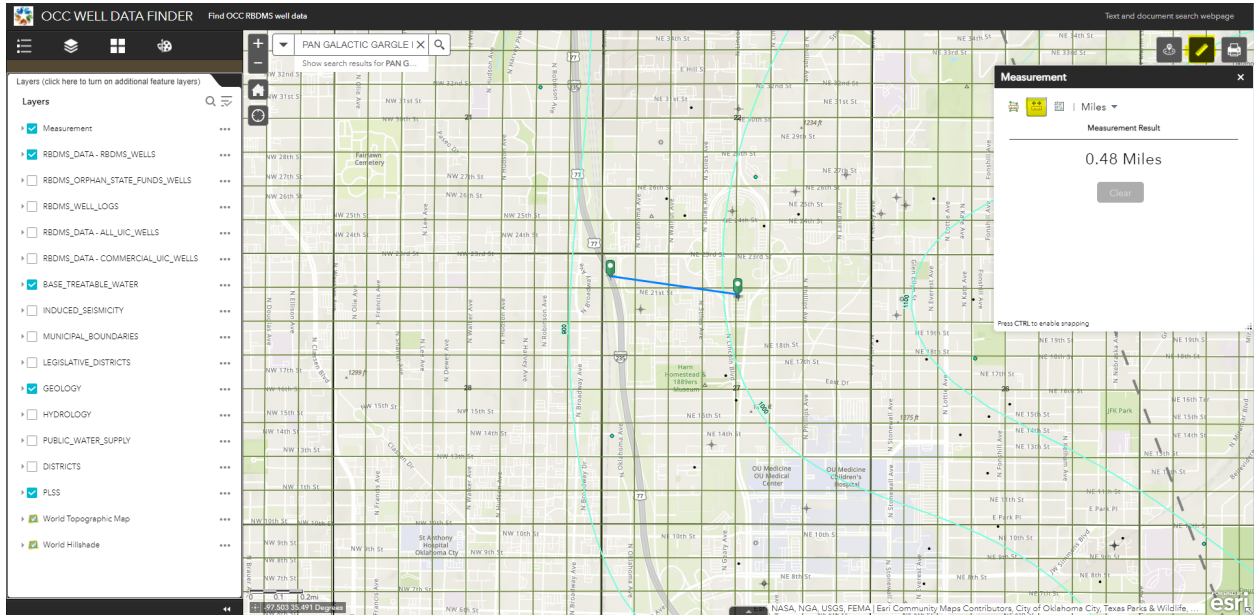
My favorite Tool is the **Near Me Tool**. Located at the top right, the icon looks like a small locator pin. Click on the icon and enter any address or lat/lon for a location to search for nearby wells. By default, the tool searches in a 1-mile radius for any wells from the well layer. The results are shown in a list below the search box. The radius can be adjusted to any value up to 15 miles to find more wells. The distance in miles from the location to the well is calculated and listed next to the well name:



○ **Distance Measure Tool**



The next tool to the right at the top is the **Distance Measure Tool**. Select the tool and choose the middle option for straight line distance measuring (units can be changed to feet or km):

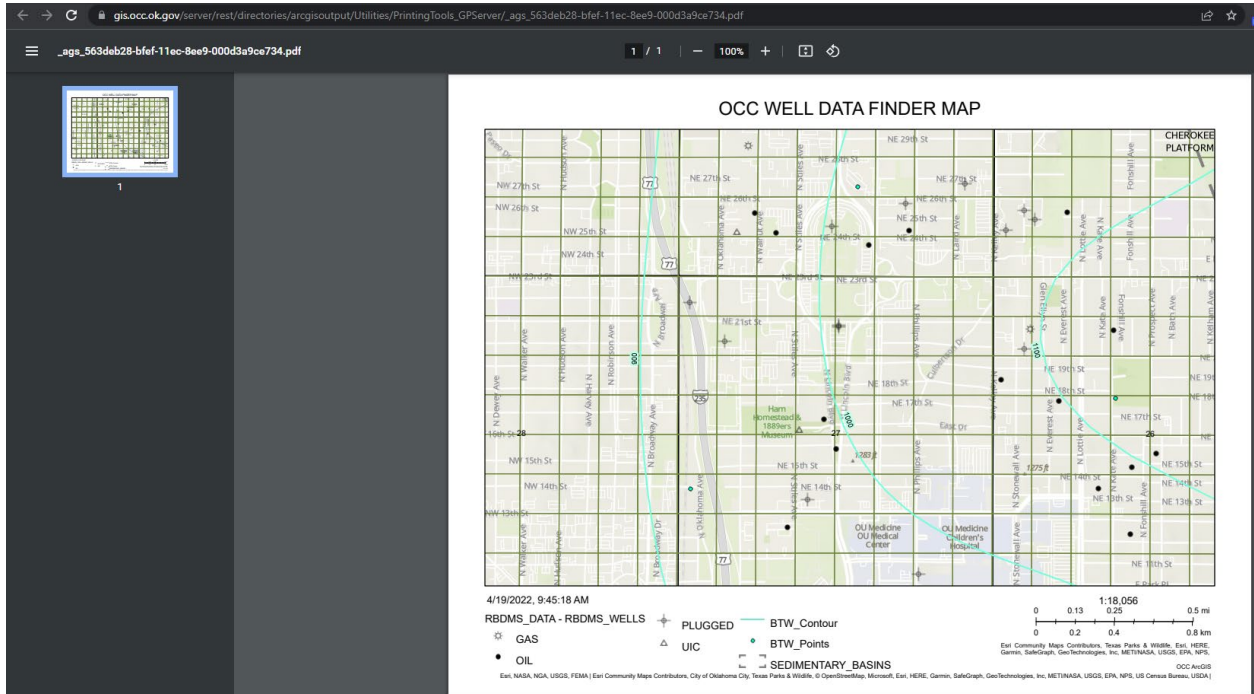
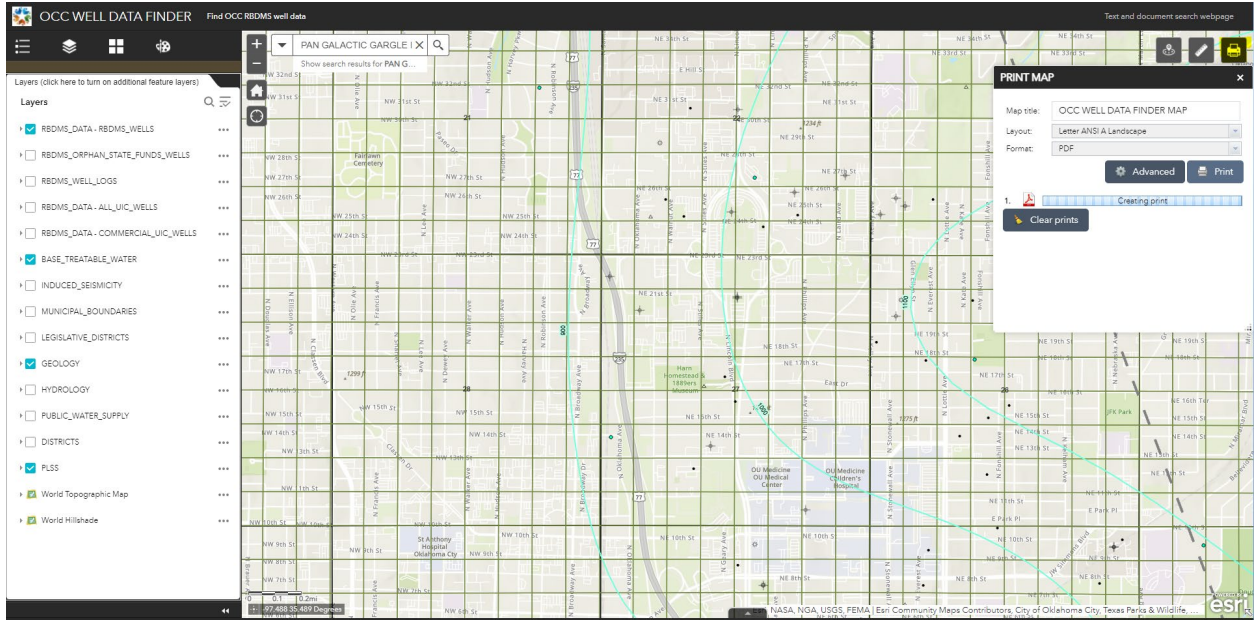


○ **Print tool**



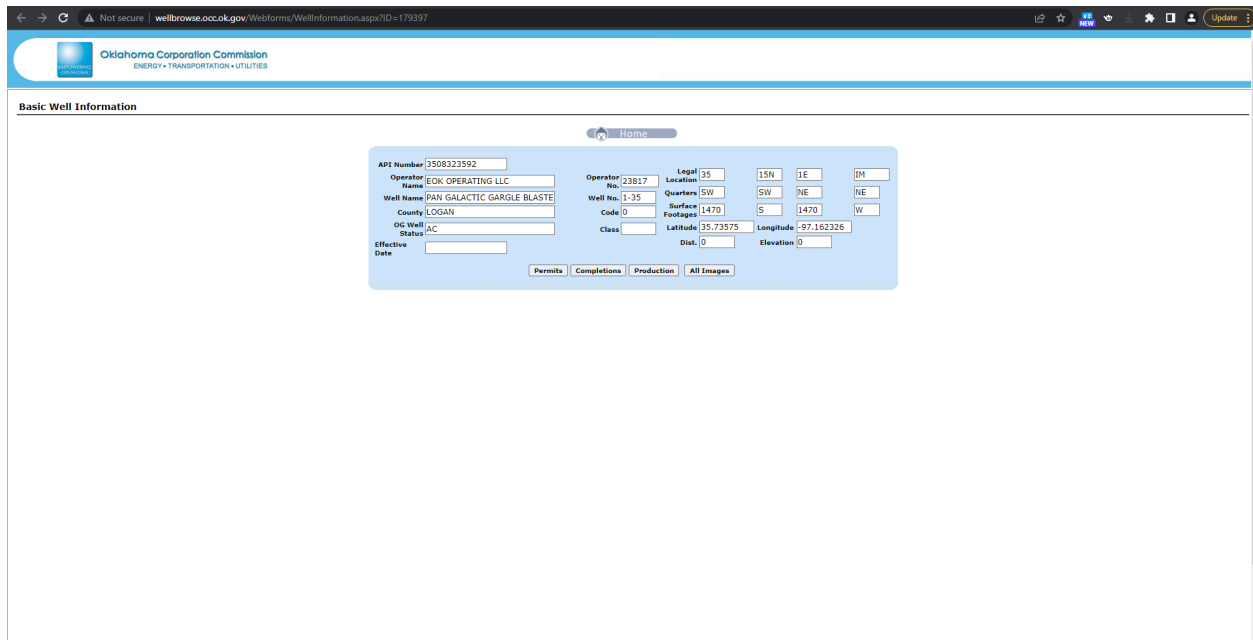
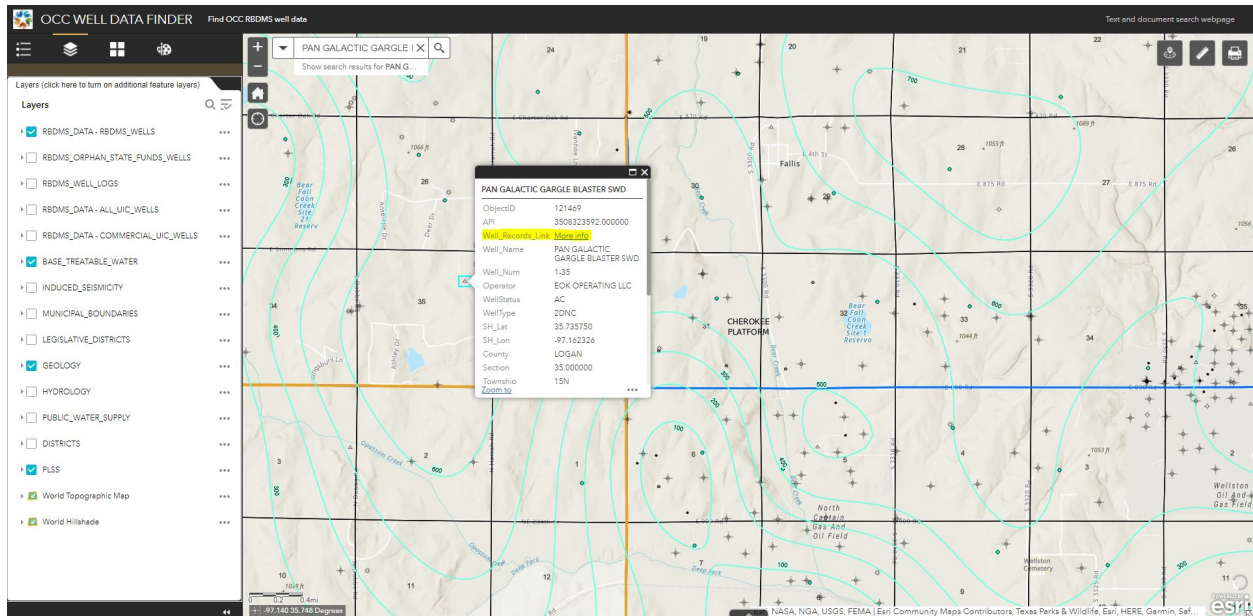
The tool on the far right at the top is the **Print Tool**. Click the icon and a print dialog box will be shown. Click Print and the print spooler service will create a map with the

current map view and the legend for the layers present (the map title may be edited and will be printed at the top of the map). Be patient, it may take a minute or two to load (when the map title is shown next to the PDF icon it is ready to open):



LAYER POPUPS

- Click on any well (or other feature) in the map to bring up the **properties pop-up** with much of the high-level information. Click on the **Well_Records_Link** [Well_Records_Link](#) [More info](#) in the well pop-up to open a new tab with the RBDMS Wellbrowse website to view all images associated with the well.



CONCLUSION

This concludes the introduction to the new Well Data Finder App. If you are curious about other uses, or need help, please reach out to me on Teams or send me an email.

Prepared by Colin Brooks

Colin.Brooks@occ.ok.gov

ISD Regulatory Manager