

Case No. / Title:

Notice of Intent to Construct a Windfarm in Harper and Woodward Counties, OK - Boiling Springs Wind Farm, LLC

AFFIDAVIT OF PUBLICATION

Buffalo Weekly News
201 N. Hoy • P.O. Box 396
Buffalo, Oklahoma 73834

STATE OF OKLAHOMA }
 } §
COUNTY OF HARPER }

I, Kayla Williams, of lawful age, being duly sworn, on oath, deposes and says:

That I am the publisher of Buffalo Weekly News, a weekly publication that is a "legal newspaper" as that phrase is defined in 25 O.S. § 106, printed and published in Buffalo, Oklahoma for the County of Harper, in the State of Oklahoma, and that the attachment hereto contains a true and correct copy of what was actually published in said legal newspaper in consecutive issues on the following dates to wit:

- 1st Insertion: October 10, 2018
- 2nd Insertion: _____
- 3rd Insertion: _____
- 4th Insertion: _____

PLEASE SEE ATTACHED SHEETS

That said newspaper has been published continuously and uninterruptedly in said county during a period of one hundred and four consecutive weeks prior to the publication of the attached notice or advertisement; that it has been admitted to the United States mail as second-class mail matter; that it has a general paid circulation, and publishes news of general interest of the State of Oklahoma governing legal publications.

215 Words 324 Lines 3 Columns 1 Issue

PUBLICATION FEE: \$712.65

Kayla Williams
(Publisher)

Subscribed and sworn to before me on this 10th day of October, 2018.

Jane S. Corgan
(Notary Public)

My Commission expires: 4-20-19

Commission Number: 03005958

April 23, 2018

Oklahoma Corporation Commission
PO Box 52000
Oklahoma City, OK 73152

Attn: Director, Public Utility Division

Re: Notice of Intent to Construct a Windfarm in Harper and Woodward Counties, OK

Dear Commission,

Pursuant to §17-160.21 of the Oklahoma Wind Energy Development Act (and OAC 165:34-45-4), Boiling Springs Wind Farm, LLC, presents this letter to the Oklahoma Corporation Commission (OCC) as notification of intent to construct a wind energy project ("Facility") in Harper and Woodward Counties, Oklahoma.

On October 30, 2017, we filed FAA form 7460-1 for eighty (80) permanent wind energy turbine locations. The wind energy turbine locations, including longitude and latitude, are specified in Exhibit A to this letter. Exhibit B to this letter contains a depiction of the project boundary. The Facility plan is in a preliminary stage and commencement of construction for the installation and commissioning of wind energy turbines is not imminent.

Simultaneously with submitting this letter to the OCC, we are mailing a complete copy of this letter and all exhibits to the Board of County Commissioners for Harper and Woodward Counties, Oklahoma (as evidenced by the "cc" information at end of this page).

In the event that this Notice is deemed to be a "Report" pursuant to 17 O.S. §160.20 (B), we attest to compliance with the setback requirements of 17 O.S. §160.20(A).

We request affirmation of submission of this Notice by providing proof of receipt stamp pursuant to OAC 165:35-45-4(b). Thank you.

Sincerely,

Boiling Springs Wind Farm, LLC

cc: Harper County Commissioners, PO Box 369, Buffalo, OK 73834-0369
Woodward County Commissioners, 1600 Main Street Suite 8, Woodward, OK 73801
(via certified mail, RRR)

Exhibit A
7460-1 FAA Filings

Project Name: EC&R -000439473-17

Structure	City, State	Lat/Long
WTG01 Determined 2017-WTW-11705-OE	Woodward, OK	36° 35' 55.84" N 99° 20' 41.74" W
WTG02 Determined 2017-WTW-11706-OE	Woodward, OK	36° 35' 30.41" N 99° 22' 6.67" W
WTG03 Determined 2017-WTW-11707-OE	Woodward, OK	36° 35' 0.16" N 99° 22' 59.28" W
WTG04 Determined 2017-WTW-11708-OE	Woodward, OK	36° 35' 2.32" N 99° 22' 30.44" W
WTG05 Determined 2017-WTW-11709-OE	Woodward, OK	36° 35' 2.93" N 99° 21' 52.57" W
WTG06 Determined 2017-WTW-11710-OE	Woodward, OK	36° 35' 0.88" N 99° 20' 15.82" W
WTG07 Determined 2017-WTW-11711-OE	Woodward, OK	36° 34' 27.62" N 99° 23' 43.74" W
WTG08 Determined 2017-WTW-11712-OE	Woodward, OK	36° 34' 19.23" N 99° 22' 59.96" W
WTG09 Determined 2017-WTW-11713-OE	Woodward, OK	36° 34' 37.74" N 99° 22' 4.37" W
WTG10 Determined 2017-WTW-11714-OE	Woodward, OK	36° 34' 33.73" N 99° 21' 37.19" W
WTG11 Determined 2017-WTW-11715-OE	Woodward, OK	36° 34' 26.18" N 99° 20' 51.52" W
WTG12 Determined 2017-WTW-11716-OE	Woodward, OK	36° 34' 24.87" N 99° 20' 31.24" W
WTG13 Determined 2017-WTW-11717-OE	Woodward, OK	36° 34' 22.31" N 99° 18' 56.11" W
WTG14 Determined 2017-WTW-11718-OE	Woodward, OK	36° 34' 34.60" N 99° 18' 34.47" W
WTG15 Determined 2017-WTW-11719-OE	Woodward, OK	36° 33' 49.28" N 99° 22' 47.87" W
WTG16 Determined 2017-WTW-11720-OE	Woodward, OK	36° 34' 6.10" N 99° 22' 24.05" W
WTG17 Determined 2017-WTW-11721-OE	Woodward, OK	36° 33' 52.13" N 99° 21' 58.72" W
WTG18 Determined 2017-WTW-11722-OE	Woodward, OK	36° 34' 0.86" N 99° 21' 1.99" W

CONTINUED ON PAGE 19

CONTINUED FROM PAGE 18

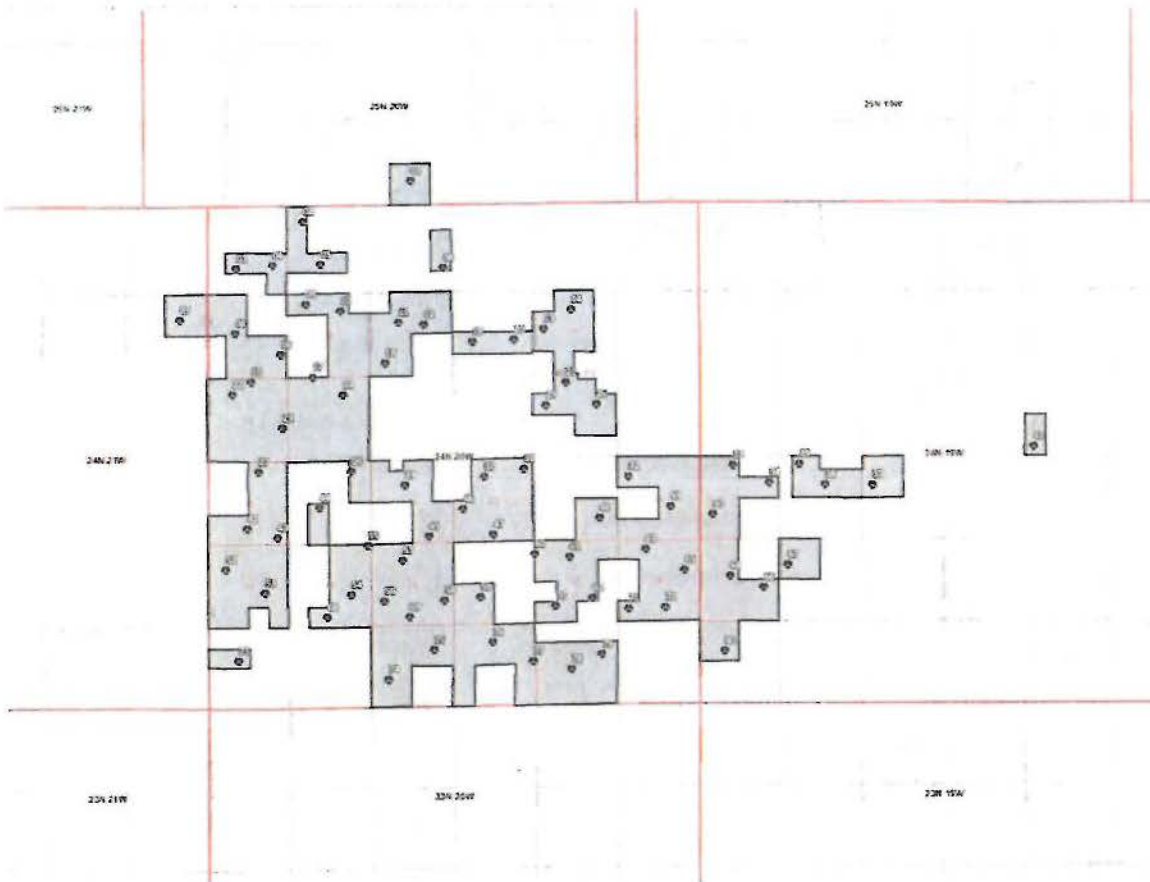
Exhibit A

Structure	City, State	Lat/Long
WTG19 Determined 2017-WTW-11723-OE	Woodward, OK	36° 34' 14.11" N 99° 19' 53.13" W
WTG20 Determined 2017-WTW-11724-OE	Woodward, OK	36° 34' 15.53" N 99° 19' 19.78" W
WTG21 Determined 2017-WTW-11725-OE	Woodward, OK	36° 33' 49.09" N 99° 18' 39.00" W
WTG22 Determined 2017-WTW-11726-OE	Woodward, OK	36° 33' 41.28" N 99° 23' 2.43" W
WTG23 Determined 2017-WTW-11727-OE	Woodward, OK	36° 33' 20.44" N 99° 22' 22.99" W
WTG24 Determined 2017-WTW-11728-OE	Woodward, OK	36° 33' 41.07" N 99° 21' 35.09" W
WTG25 Determined 2017-WTW-11729-OE	Woodward, OK	36° 33' 34.87" N 99° 18' 54.75" W
WTG26 Determined 2017-WTW-11730-OE	Woodward, OK	36° 33' 35.46" N 99° 18' 14.68" W
WTG27 Determined 2017-WTW-11731-OE	Woodward, OK	36° 32' 52.70" N 99° 22' 42.04" W
WTG28 Determined 2017-WTW-11732-OE	Woodward, OK	36° 32' 53.22" N 99° 21' 28.84" W
WTG29 Determined 2017-WTW-11733-OE	Woodward, OK	36° 32' 44.58" N 99° 20' 46.76" W
WTG30 Determined 2017-WTW-11734-OE	Woodward, OK	36° 32' 50.04" N 99° 19' 43.88" W
WTG31 Determined 2017-WTW-11735-OE	Woodward, OK	36° 32' 55.00" N 99° 19' 12.08" W
WTG32 Determined 2017-WTW-11736-OE	Woodward, OK	36° 32' 50.02" N 99° 17' 49.32" W
WTG33 Determined 2017-WTW-11737-OE	Woodward, OK	36° 32' 57.29" N 99° 16' 27.17" W
WTG34 Determined 2017-WTW-11738-OE	Woodward, OK	36° 32' 46.23" N 99° 15' 58.30" W
WTG35 Determined 2017-WTW-11739-OE	Woodward, OK	36° 32' 57.77" N 99° 15' 34.60" W
WTG36 Determined 2017-WTW-11740-OE	Woodward, OK	36° 32' 44.89" N 99° 15' 14.09" W
WTG37 Determined 2017-WTW-11741-OE	Woodward, OK	36° 32' 44.78" N 99° 14' 37.20" W
WTG38 Determined 2017-WTW-11742-OE	Woodward, OK	36° 32' 42.23" N 99° 13' 59.75" W
WTG39 Determined 2017-WTW-11743-OE	Woodward, OK	36° 33' 10.75" N 99° 13' 27.21" W
WTG40 Determined 2017-WTW-11744-OE	Woodward, OK	36° 32' 51.10" N 99° 13' 1.41" W
WTG41 Determined 2017-WTW-11745-OE	Woodward, OK	36° 33' 8.94" N 99° 12' 29.92" W
WTG42 Determined 2017-WTW-11746-OE	Woodward, OK	36° 32' 16.94" N 99° 22' 51.28" W
WTG43 Determined 2017-WTW-11747-OE	Woodward, OK	36° 32' 11.14" N 99° 22' 26.76" W
WTG44 Determined 2017-WTW-11748-OE	Woodward, OK	36° 32' 30.19" N 99° 21' 53.83" W
WTG45 Determined 2017-WTW-11749-OE	Woodward, OK	36° 32' 12.41" N 99° 20' 27.56" W
WTG46 Determined 2017-WTW-11750-OE	Woodward, OK	36° 32' 29.71" N 99° 20' 0.89" W
WTG47 Determined 2017-WTW-11751-OE	Woodward, OK	36° 32' 13.65" N 99° 19' 36.57" W
WTG48 Determined 2017-WTW-11752-OE	Woodward, OK	36° 32' 24.16" N 99° 18' 12.19" W
WTG49 Determined 2017-WTW-11753-OE	Woodward, OK	36° 32' 31.64" N 99° 17' 16.47" W

CONTINUED FROM PAGE 19
Exhibit A

Structure	City, State	Lat/Long
WTG50 Determined 2017-WTW-11754-OE	Woodward, OK	36° 32' 26.73" N 99° 16' 43.38" W
WTG51 Determined 2017-WTW-11755-OE	Woodward, OK	36° 32' 26.17" N 99° 12' 44.93" W
WTG52 Determined 2017-WTW-11756-OE	Woodward, OK	36° 31' 51.08" N 99° 23' 8.20" W
WTG53 Determined 2017-WTW-11757-OE	Woodward, OK	36° 31' 36.15" N 99° 22' 37.12" W
WTG54 Determined 2017-WTW-11758-OE	Woodward, OK	36° 31' 35.00" N 99° 21' 29.04" W
WTG55 Determined 2017-WTW-11759-OE	Woodward, OK	36° 32' 6.39" N 99° 21' 15.87" W
WTG56 Determined 2017-WTW-11760-OE	Woodward, OK	36° 31' 30.96" N 99° 21' 3.12" W
WTG57 Determined 2017-WTW-11761-OE	Woodward, OK	36° 31' 56.73" N 99° 20' 48.60" W
WTG58 Determined 2017-WTW-11762-OE	Woodward, OK	36° 31' 31.35" N 99° 20' 15.15" W
WTG59 Determined 2017-WTW-11763-OE	Woodward, OK	36° 31' 33.51" N 99° 19' 46.97" W
WTG60 Determined 2017-WTW-11764-OE	Woodward, OK	36° 32' 1.05" N 99° 19' 4.06" W
WTG61 Determined 2017-WTW-11765-OE	Woodward, OK	36° 31' 59.27" N 99° 18' 35.94" W
WTG62 Determined 2017-WTW-11766-OE	Woodward, OK	36° 31' 33.42" N 99° 18' 17.66" W
WTG63 Determined 2017-WTW-11767-OE	Woodward, OK	36° 32' 4.20" N 99° 17' 35.88" W
WTG64 Determined 2017-WTW-11768-OE	Woodward, OK	36° 31' 47.25" N 99° 16' 29.66" W
WTG65 Determined 2017-WTW-11769-OE	Woodward, OK	36° 31' 51.22" N 99° 17' 5.59" W
WTG66 Determined 2017-WTW-11770-OE	Woodward, OK	36° 31' 40.04" N 99° 16' 2.90" W
WTG67 Determined 2017-WTW-11771-OE	Woodward, OK	36° 31' 54.40" N 99° 15' 43.84" W
WTG68 Determined 2017-WTW-11772-OE	Woodward, OK	36° 31' 20.60" N 99° 21' 47.83" W
WTG69 Determined 2017-WTW-11773-OE	Woodward, OK	36° 31' 20.85" N 99° 20' 43.17" W
WTG70 Determined 2017-WTW-11774-OE	Woodward, OK	36° 31' 28.25" N 99° 18' 47.44" W
WTG71 Determined 2017-WTW-11775-OE	Woodward, OK	36° 31' 26.52" N 99° 17' 49.49" W
WTG72 Determined 2017-WTW-11776-OE	Woodward, OK	36° 31' 27.27" N 99° 17' 20.74" W
WTG73 Determined 2017-WTW-11777-OE	Woodward, OK	36° 30' 52.66" N 99° 22' 58.06" W
WTG74 Determined 2017-WTW-11778-OE	Woodward, OK	36° 30' 41.28" N 99° 20' 59.72" W
WTG75 Determined 2017-WTW-11779-OE	Woodward, OK	36° 30' 59.69" N 99° 20' 23.62" W
WTG76 Determined 2017-WTW-11780-OE	Woodward, OK	36° 31' 4.68" N 99° 19' 37.36" W
WTG77 Determined 2017-WTW-11781-OE	Woodward, OK	36° 30' 52.63" N 99° 19' 5.07" W
WTG78 Determined 2017-WTW-11782-OE	Woodward, OK	36° 30' 47.85" N 99° 18' 34.53" W
WTG79 Determined 2017-WTW-11783-OE	Woodward, OK	36° 30' 57.25" N 99° 18' 10.48" W
WTG80 Determined 2017-WTW-11784-OE	Woodward, OK	36° 30' 59.40" N 99° 16' 34.16" W

Exhibit B
Project Boundary



**Boiling Springs
Boundary Map**

Harper & Woodward
Counties, OK



- PMA Approved Layout
- ▭ Project Boundary
- ▭ PUMA Township
- ▭ 36.36 Section

