



OKLAHOMA Transportation

Project Update Meeting

Contract Identification No. 2342
Preparation of Construction Plans
(Grade, Drain, Bridge and Surface)

McCurtain County



AGENDA

US-259

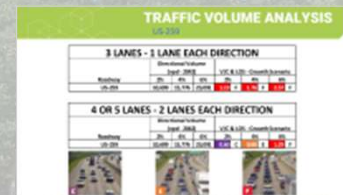
- PREVIOUS MEETINGS RECAP
- CONSTRUCTION UPDATE
- TOPICS FROM PAST MEETINGS
- 3 KEY TOPICS
 - WALKABILITY
 - COMMUNITY PARKING
 - AESTHETICS
- NEXT STEPS
- COMMENT METHODS
- BREAKOUT SESSIONS



PREVIOUS MEETINGS RECAP

US-259

- **COMMUNITY OUTREACH MEETING – 10/27/22**
 - Interim Project Discussion – signals, striping
 - Traffic volumes & preliminary roadway size
- **COMMUNITY OUTREACH EVENT – 5/16/23**
 - Additional Traffic Analysis & Models
 - Requested feedback on 3-lane vs. 5-lane
- **PUBLIC MEETING – 3/26/24**
 - Environmental update
 - Results from last meeting – 5-lane



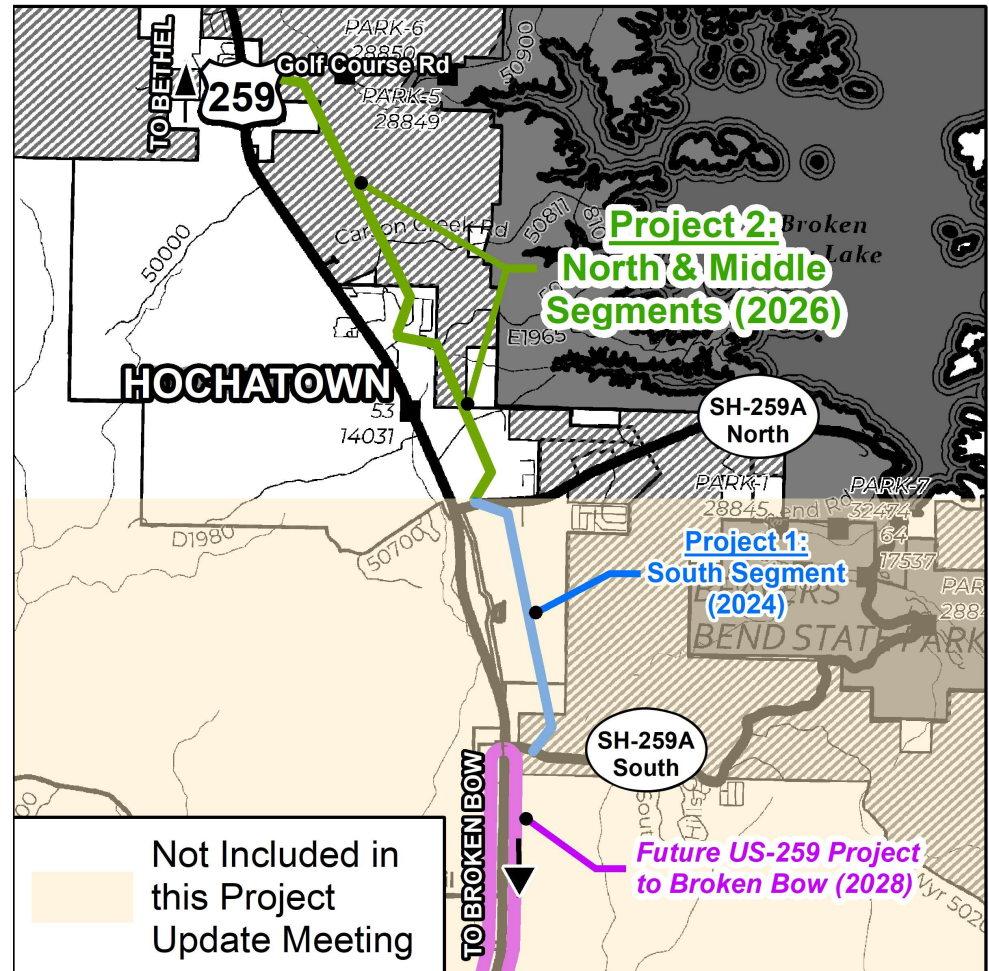
CONSTRUCTION UPDATE

US-259

PROJECT 1 – SOUTH SEGMENT

ANTICIPATED SCHEDULE:

- Let – Sept. 2024
- Begin Construction – Early 2025



KEY TOPICS

US-259

TOPICS FROM PUBLIC COMMENT

WALKABILITY

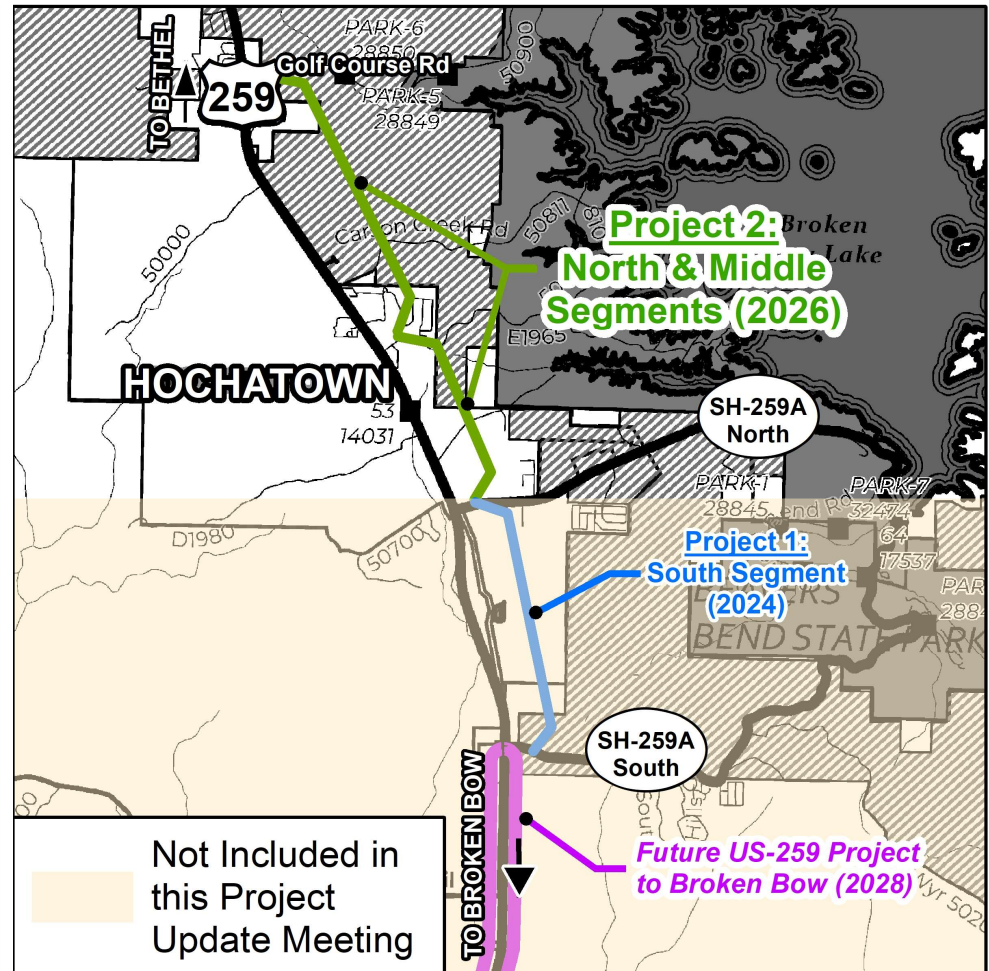
Increasing foot traffic need safe locations to cross

COMMUNITY PARKING

Universal Community Parking

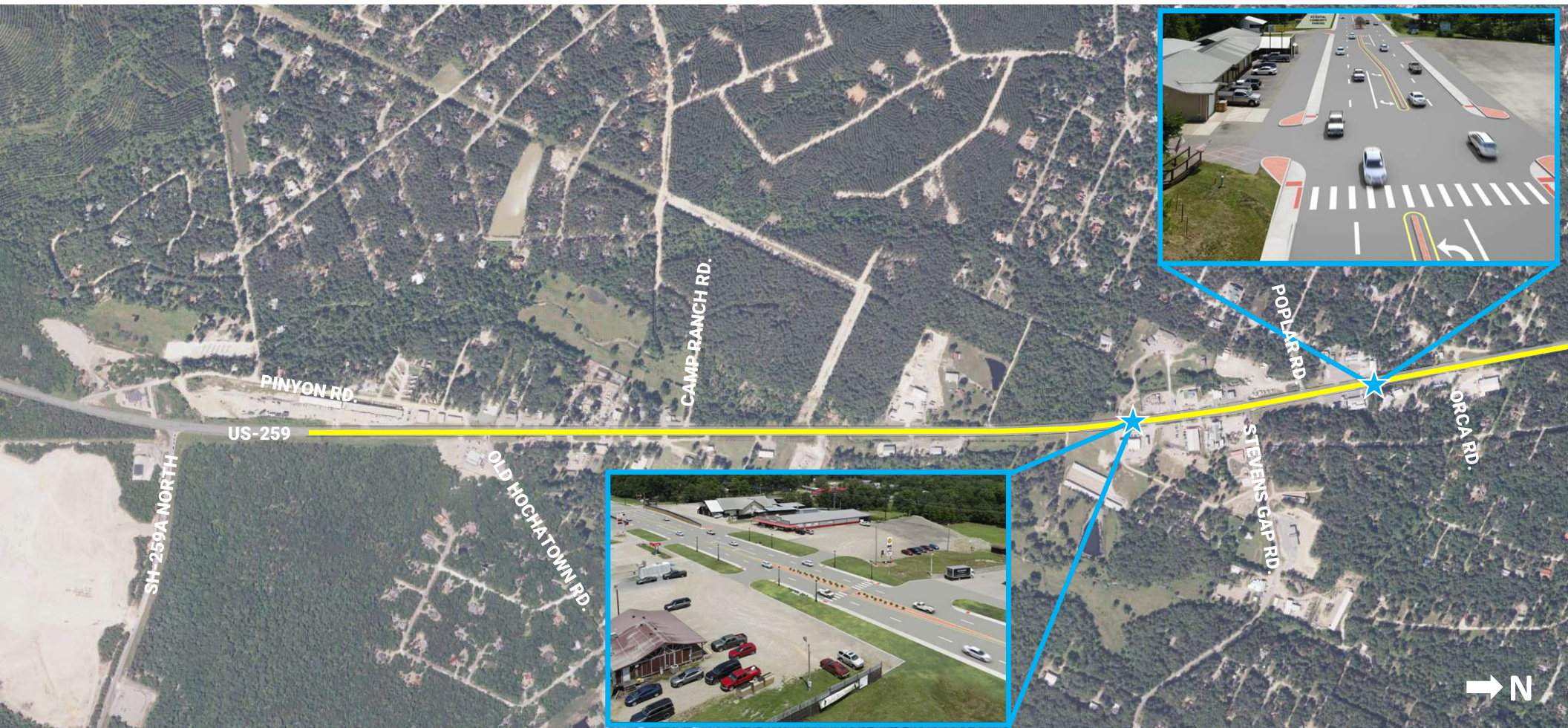
AESTHETICS

Keep the smaller town feel and natural beauty



WALKABILITY

US-259



COMMUNITY PARKING

US-259



AESTHETICS

US-259

OVERALL AESTHETIC

MEDIAN OPTIONS



AESTHETICS

US-259



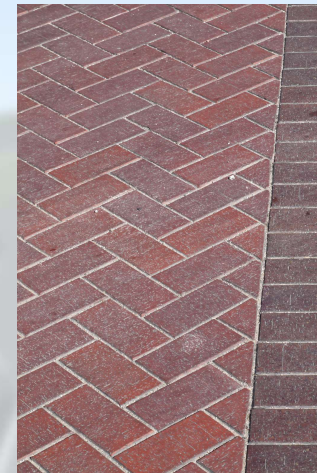
AESTHETICS

US-259

LANDSCAPING



STAMPED CONCRETE & BRICK



LIGHTING



NEXT STEPS

US-259



**RECEIVE COMMENTS
FROM PUBLIC**



**COMMENTS UTILIZED IN THE
DESIGN PROCESS**



**FINAL DESIGN &
CONSTRUCTION**

COMMENT METHODS

US-259



In Person:

Fill out a comment form at today's meeting



Email:

environment@odot.org

Comments Submitted By:
October 8th, 2024



Voicemail:

405-325-3269



Mail:

Environmental Programs Division
Oklahoma Department of Transportation
200 N.E. 21st St.
Oklahoma City, OK 73105-3204

LEVEL OF SERVICE (LOS)

US-259



TRAFFIC VOLUME ANALYSIS

US-259

3 LANES - 1 LANE EACH DIRECTION								
Roadway	Directional Volume (vpd - 2042)			V/C & LOS - Growth Scenario				
	2%	4%	6%	2%		4%		6%
US-259	10,699	15,776	23,091	1.19	F	1.76	F	2.57

4 OR 5 LANES - 2 LANES EACH DIRECTION								
Roadway	Directional Volume (vpd - 2042)			V/C & LOS - Growth Scenario				
	2%	4%	6%	2%		4%		6%
US-259	10,699	15,776	23,091	0.60	C	0.88	E	1.29



MODEL RESULTS

US-259 – EXISTING CONDITIONS

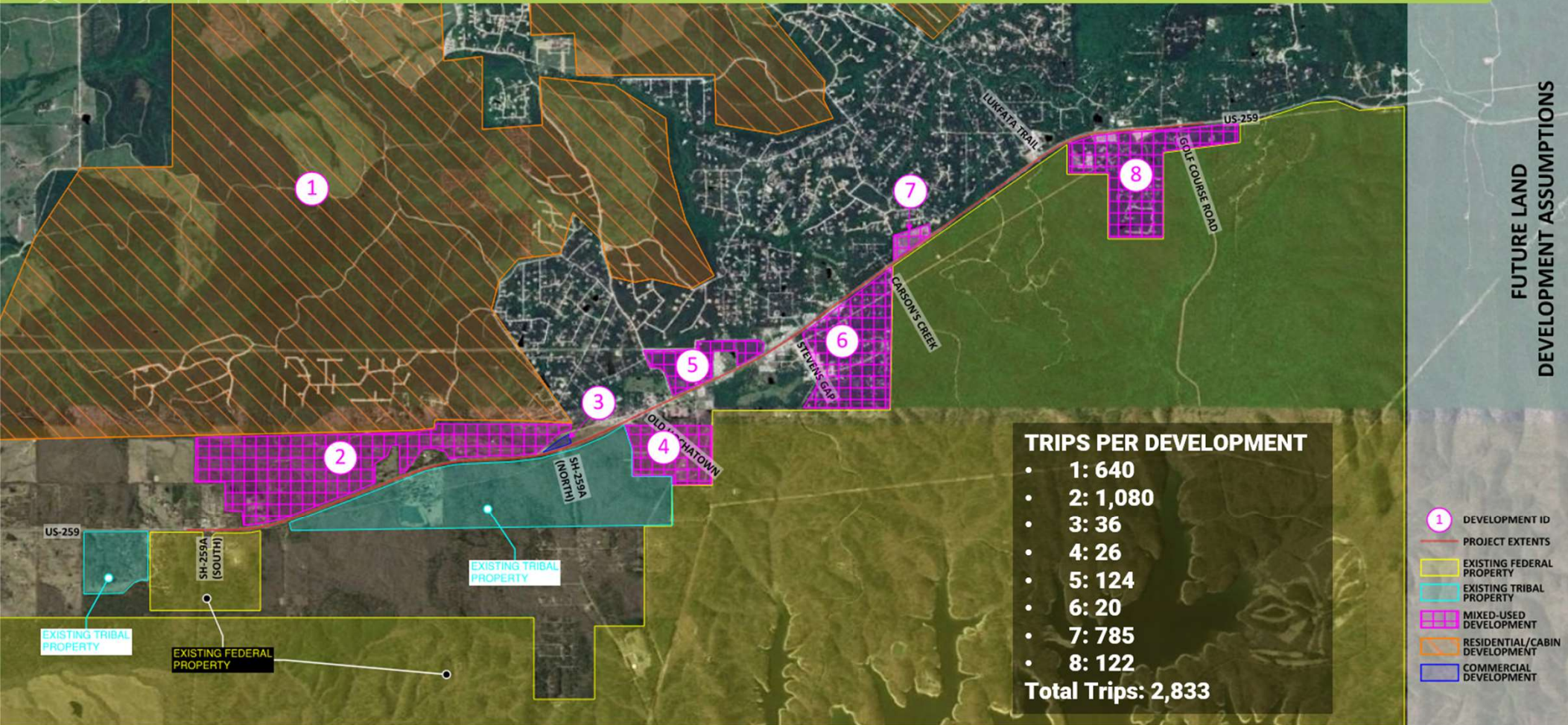


OKLAHOMA
Transportation



2023 HOCHATOWN TRAFFIC MODELING
US-259 AND SH-259A SOUTH INTERSECTION

US-259 – PM PEAK



ENVIRONMENTAL CONSIDERATIONS



 Waters and Wetlands

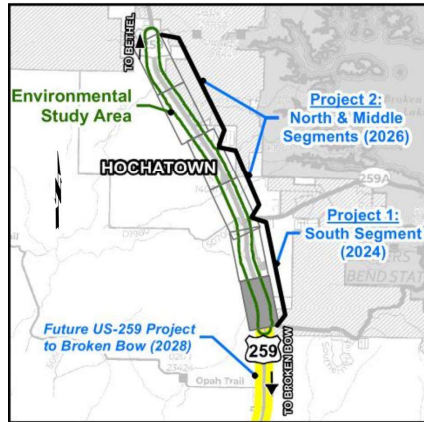
 Cultural Resources

 Biological Assessment

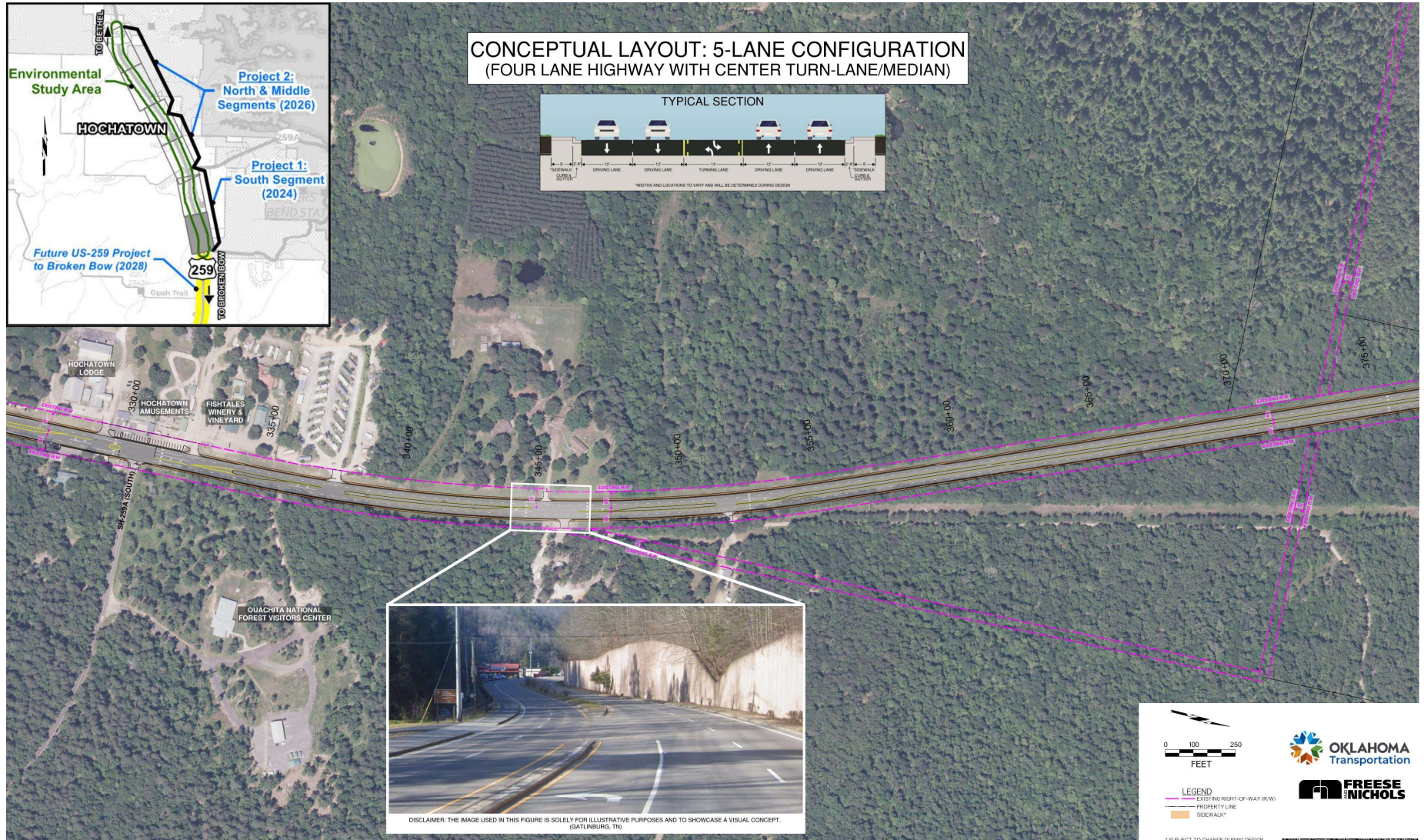
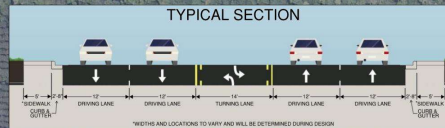
 Traffic Noise Analysis

 Hazardous Materials

 Public Involvement



CONCEPTUAL LAYOUT: 5-LANE CONFIGURATION (FOUR LANE HIGHWAY WITH CENTER TURN-LANE/MEDIAN)



DISCLAIMER: THE IMAGE USED IN THIS FIGURE IS SOLELY FOR ILLUSTRATIVE PURPOSES AND TO SHOWCASE A VISUAL CONCEPT.
(GATLINBURG, TN)



OKLAHOMA
Transportation

FREESSE
NICHOLS

LEGEND
— EXISTING RIGHT-OF-WAY (R/W)
— PROPERTY LINE
— SIDEWALK*

* SUBJECT TO CHANGE DURING DESIGN