

ALTERNATIVE COMPARISON MATRIX

**JP No. 29574(04) US-281 over the Washita River, Caddo County
Project Matrix**

Alternative	Total Cost	Residential Relocations	Commercial Relocations	Wetlands (acre)	Cultural Resources	Park Property (acre)
1 EAST OFFSET	\$17.5 M	4 (1 tribal)	0	0.1	0	0.5
2 WEST OFFSET	\$17.7 M	8 (3 tribal)	1	0.1	0	0

PROJECT INFORMATION SUMMARY

- Total Programmed Estimated Cost of this projects: **\$14.0 Million**
- Right-of-Way & Utility Relocation programmed to start in: **2018**
- Construction programmed to start in: **2020**
- Current Annual Average Daily Traffic (AADT) in year 2015: **7,460 Vehicles a day**
- Future Estimated AADT by year 2040: **10,890 Vehicles a day**
- Highway will remain open to traffic during construction.

*Totals DO NOT include Toll Roads

DIVISION 7 ENGINEER: JAY EARP, P.E.

Total Road Miles:
1,423.98

Total Interstate Miles:
95.32

Total Bridges:
792

Counties: Caddo, Carter, Comanche, Cotton, Grady, Jefferson, Love, Murray, Stephens



PLEASE PROVIDE YOUR COMMENTS BY DECEMBER 08, 2016

For more information about the project

Greg Worrell
NEPA Project Manager
Division 7
(405) 522-8014
odot-environment@odot.org

For more information about Public Participation

Frank Victor Roesler III
Public Involvement Officer
Strategic Asset & Performance Management Division
(405) 521-2350
publicmeetings@odot.org

<http://www.odot.org/publicmeetings>



DOT PUBLIC MEETING
Oklahoma Department of Transportation
November 17th, 2016 @ 6:30 p.m.
Anadarko High School | Multipurpose Room | 1400 Warrior Drive | Anadarko, OK 73005

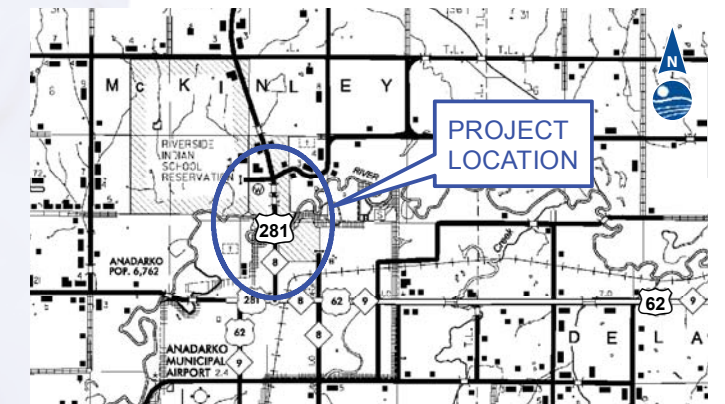
**US-281 • Caddo County, OK • JP: 29574(04)
Presentation of Proposed Alternatives & Solicitation of Public Input**

Purpose of Meeting

To present the proposed alternatives for US-281 over the Washita River and Overflows to the public and get input to aid the Department in selecting a preferred alternative to move forward with the completion of detailed environmental studies, design, and construction.

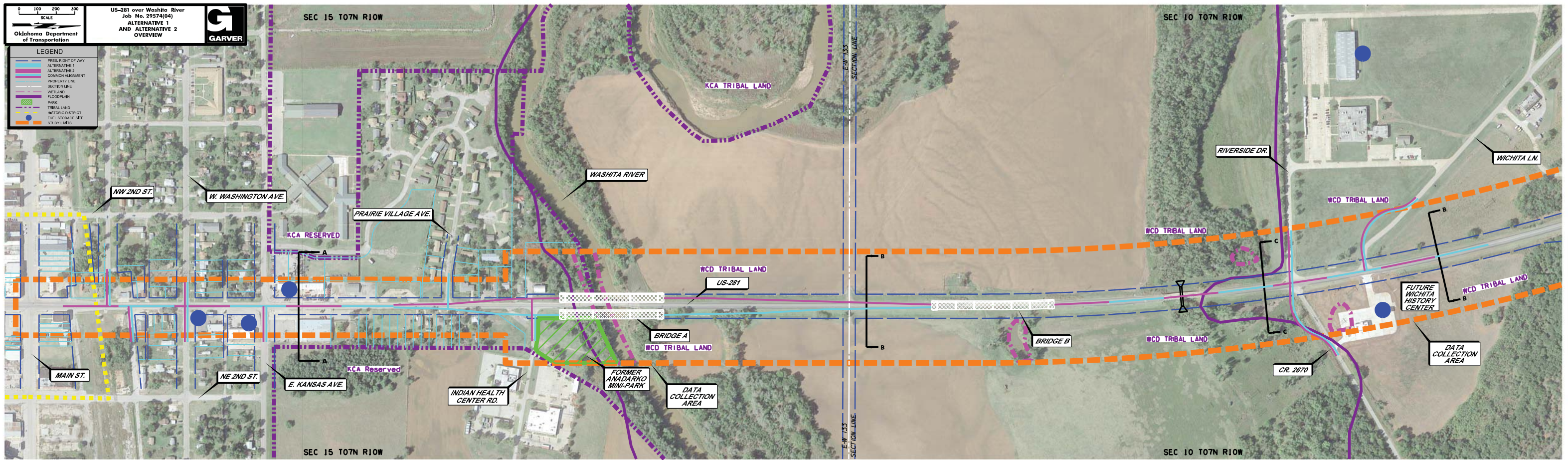
Project Background

The Oklahoma Department of Transportation (ODOT), in cooperation with the Federal Highway Administration (FHWA) is proposing to improve US-281 over the Washita River and Overflows in Caddo County, Oklahoma. The two overflow bridges have become structurally deficient based on a Sept 23, 2016 inspection. The deck condition has dropped the status to SD. The existing Washita River overflow bridges are narrow and are structurally deficient. The bridge over the Washita River is narrow and considered "at-risk", meaning the structural sufficiency is reduced and is at risk of becoming structurally deficient. Current traffic volumes on the roadway are 7,260 vehicles per day (vpd), with a future projected traffic volume of 10,890 vpd in 2040. The purpose of the project is to correct these narrow, at-risk / structurally deficient bridges. ODOT has recently tasked a consultant to study alternatives for improving the highway while taking into consideration construction costs, right-of-way costs, and environmental constraints. Because much of the land in the project area is owned by tribal entities, ODOT held a separate meeting on July 14, 2016 to present information about the proposed alternatives and gather tribal input.



Project Description

The project will begin just north of Main Street in Anadarko and will extend approximately 1.5 miles north through the US-281/Riverside Drive intersection. In order to keep the road open to traffic during construction, two offset alignments are being considered for the improvement. The alternatives are similar except for how they replace the bridge over the Washita River. Alternative 1 would replace the bridge approximately 48 feet to the east of the existing bridge, and Alternative 2 would replace the bridge approximately 42 feet west of the existing bridge. The roadway improvements are the same for both alternatives. US-281 south of the Indian Health Center would be reconstructed with two 12-foot-wide driving lanes, a 14-foot-wide center left turn lane, curbs, and 5-foot sidewalks on both sides. North of the Indian Health Center, US-281 will be reconstructed with two 12-foot-wide driving lanes and 8-foot-wide shoulders with a separated 5-foot sidewalk on the west side. There will be a pedestrian crosswalk on US-281 at the Indian Health Center. There will be a 12-foot-wide center turn lane on US-281 at the Riverside Drive/CS 2670 intersection for north and southbound traffic.



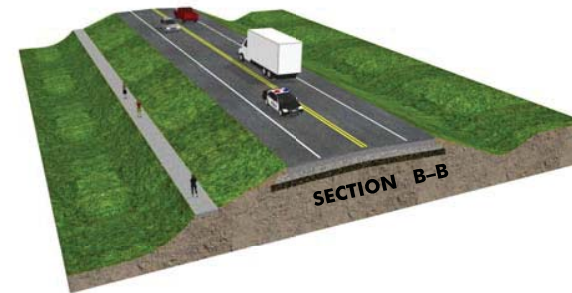
ALTERNATIVE 1 – EAST OFFSET

ALTERNATIVE 2 – WEST OFFSET



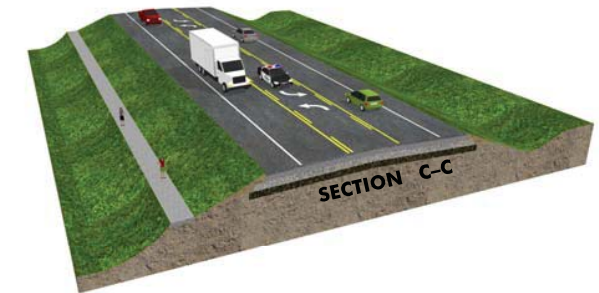
Typical Section A-A: South of Indian Health Center

Typical includes: two 12-foot wide driving lanes; 14-foot wide center left turn lane; Curbs; 5-foot sidewalks on both sides



Typical Section B-B: North of Indian Health Center

Typical includes: two 12-foot wide driving lanes; 8-foot wide shoulders; Separated 5-foot wide sidewalk on the west side



Typical Section C-C: North of Indian Health Center

Typical include: two 12-foot wide driving lanes; 8-foot wide shoulders; Separated 5-foot wide sidewalk on the west side
There will be a 12-foot wide center turn lane on US-281 at the Riverside Drive/CS 2670 intersection for north and southbound traffic