



March 2018 UPDATE

SH-19 Improvements through Alex, Grady County, JP #30425(04) & 30425(07)

Dear Interested Citizen – This flyer is to update you as to ODOT’s Preferred Alternative for SH-19 improvements through Alex. At a public meeting held June 29, 2017, ODOT presented the Preferred Alternative and requested public comment. Based upon evaluation of public comments and additional information received after the Open House, ODOT has revised the Preferred Alternative.

Presentation of Preferred Alternative

At an Open House held June 29, 2017 in the Alex Public Schools Cafeteria, ODOT presented the Preferred Alternative for improvement of three segments of SH-19 and requested public comment. The Preferred Alternative presented at the Open House was:

- Segment A: Alternative 2 – North Offset, improvements offset 65 ft. north of the existing centerline
- Segment B: Alternative 2 – Open Section with 4-ft. Shoulders
- Segment C: Alternative 1 – Improvements on existing alignment, to include pavement resurfacing, rehabilitation and/or restoration, shoulder widening, flattening substandard vertical curves, roadside clear zone adjustment, drainage improvements, and intersection improvements

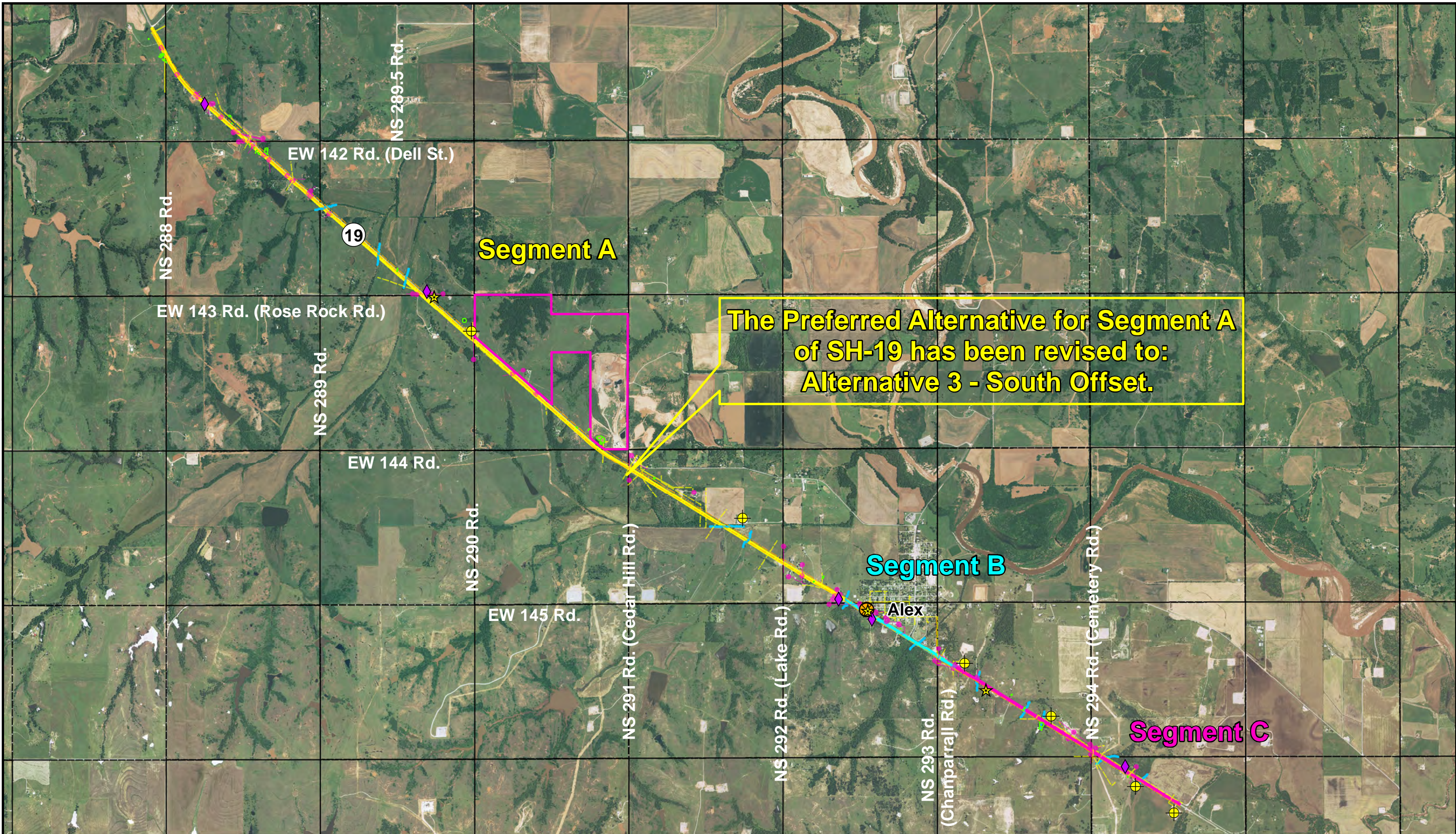
Revision of Preferred Alternative

ODOT received numerous public comments and also met with representatives of the Southern Plains Landfill to discuss potential landfill impacts associated with the Segment A Preferred Alternative, i.e., Alternative 2 - North Offset. Due to the estimated economic impacts of the North Offset, ODOT has determined that SH-19 will be realigned to the south through Segment A. **Therefore, the Preferred Alternative for Segment A has been revised from Alternative 2: North Offset to Alternative 3 - South Offset.** See the enclosed figures detailing the Preferred Alternative revision made subsequent to the June 29, 2017 Open House.

For more information about this project, including ODOT responses to public comments, please visit ODOT’s webpage:

https://www.ok.gov/odot/Programs_and_Projects/Public_Meetings_and_Hearings/20170629.html

ODOT will move forward with preliminary design and environmental studies for this project. Currently, ODOT has this project scheduled for right-of-way acquisition and utility relocation in 2020, construction of Segments B and C in 2022, and Segment A construction in 2023. Public involvement is a vital element of successful transportation planning, and ODOT thanks you for your participation in this very important transportation project.



The Preferred Alternative for Segment A of SH-19 has been revised to: Alternative 3 - South Offset.

Map Features	Environmental Constraints	Utilities
Section Lines	Potential Waterways	Underground Storage Tank
Potential Wetlands	Southern Plains Landfill	Oil and Gas Facilities
		Potential Residential Relocations
		Potential Commercial Relocations
		Electrical Power Line
		Oil or Gas Line
		Telecommunication Line
		Water Line

N

0 1,500 3,000 Feet

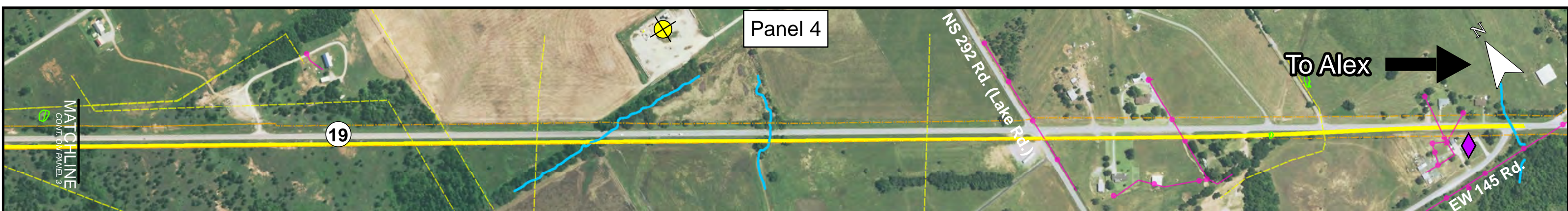
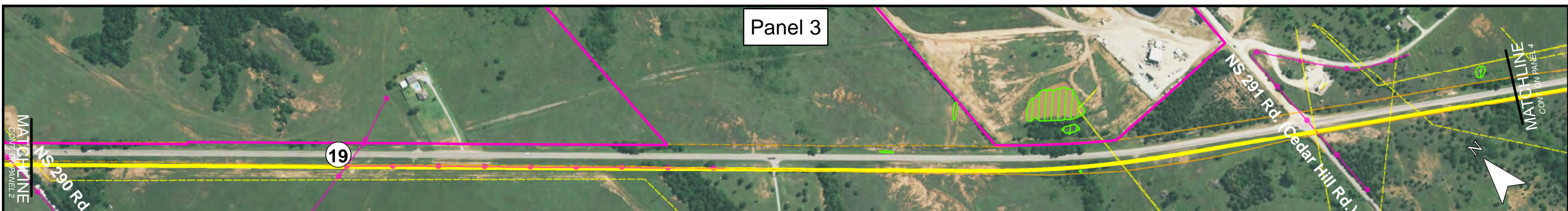
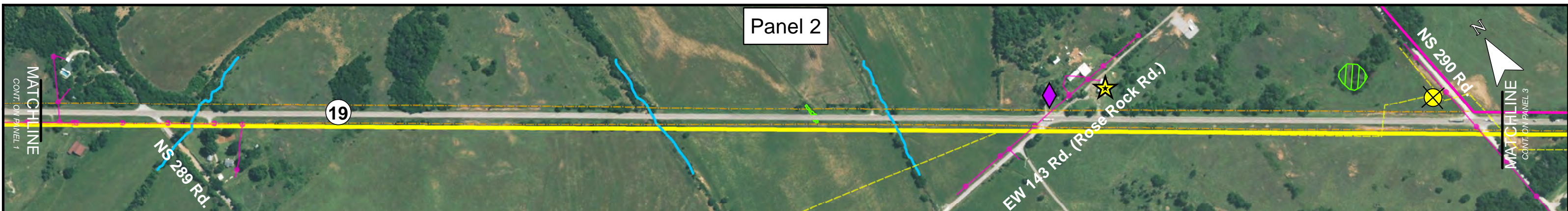
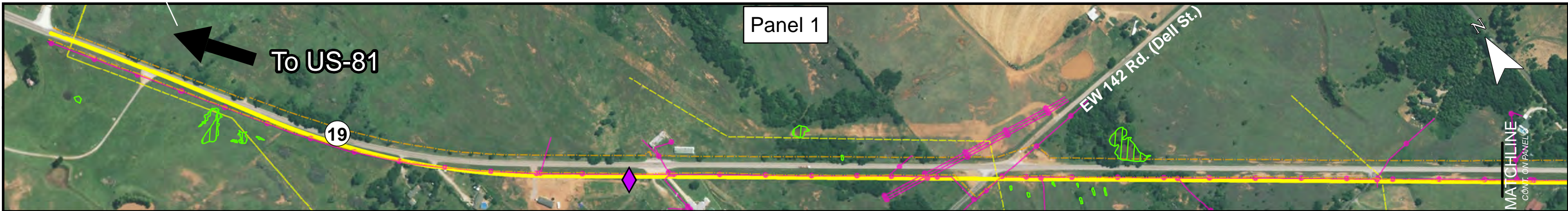
TRIAD DESIGN GROUP
Architecture • Engineering

Job Nos. 30425(04)(07)
Grady County

March 2018

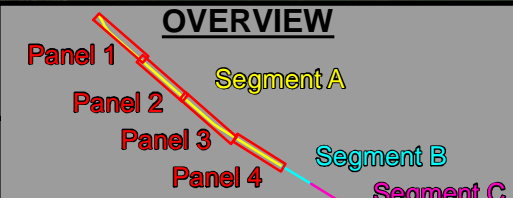
**SH-19
PREFERRED ALTERNATIVE REVISION
SUBSEQUENT TO
06/29/17 OPEN HOUSE**

Page 1



LEGEND

Alternative 3: South Offset	Oil and Gas Facilities	Electrical Power Line
Potential Waterways	Potential Residential Relocations	Oil or Gas Line
Potential Wetlands	Potential Commercial Relocations	Telecommunication Line
Southern Plains Landfill	Water Line	



TRIAD DESIGN GROUP
Architects • Engineers

Job Nos. 30425(04)(07)

DOT Grady County
Oklahoma Department of Transportation

March 2018

**SH-19, SEGMENT A
PREFERRED ALTERNATIVE REVISION
SUBSEQUENT TO
06/29/17 OPEN HOUSE**

Page 2