

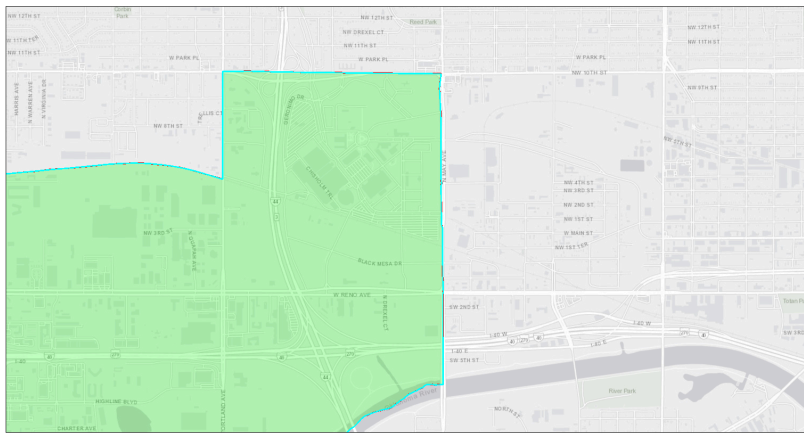


# EJScreen Community Report

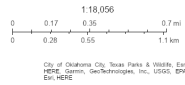
This report provides environmental and socioeconomic information for user-defined areas, and combines that data into environmental justice and supplemental indexes.

## Census Tract 1070.02

Tract: 40109107002  
 Population: 2,638  
 Area in square miles: 4.24



September 30, 2024  
 Census Tract 1070.02

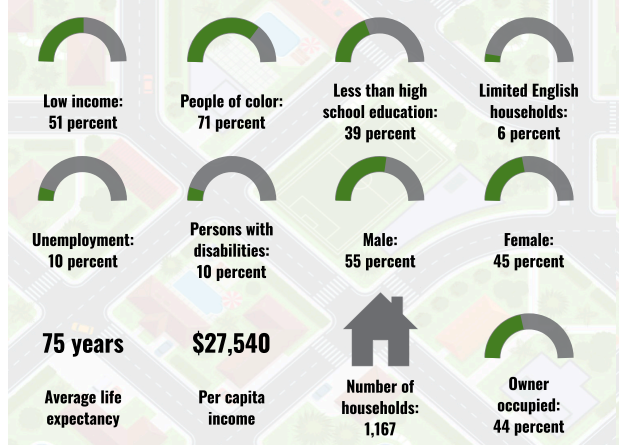


City of Oklahoma City, Neva Parks & Wildlife, Esri, HERE, Garmin, SwireTechnology, Inc., USGS, EPA, Esri, HERE

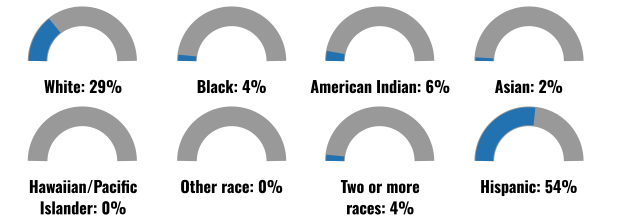
### LANGUAGES SPOKEN AT HOME

LANGUAGE	PERCENT
English	58%
Spanish	37%
Other Indo-European	1%
Tagalog (including Filipino)	1%
Other Asian and Pacific Island	1%
Other and Unspecified	3%
Total Non-English	42%

### COMMUNITY INFORMATION



### BREAKDOWN BY RACE



### BREAKDOWN BY AGE



### LIMITED ENGLISH SPEAKING BREAKDOWN



Notes: Numbers may not sum to totals due to rounding. Hispanic population can be of any race. Source: U.S. Census Bureau American Community Survey (ACS) 2018-2022. Life expectancy data comes from the Centers for Disease Control.

Report for Tract: 40109107002

Report produced September 30, 2024 using EJScreen Version 2.3

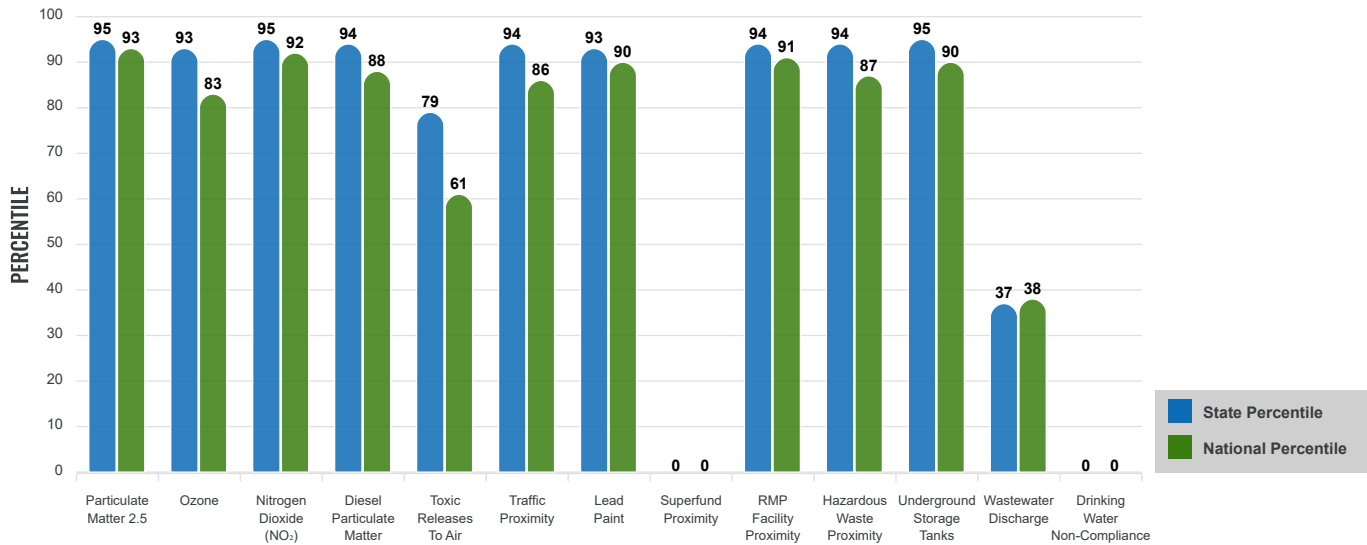
# Environmental Justice & Supplemental Indexes

The environmental justice and supplemental indexes are a combination of environmental and socioeconomic information. There are thirteen EJ indexes and supplemental indexes in EJScreen reflecting the 13 environmental indicators. The indexes for a selected area are compared to those for all other locations in the state or nation. For more information and calculation details on the EJ and supplemental indexes, please visit the [EJScreen website](#).

## EJ INDEXES

The EJ indexes help users screen for potential EJ concerns. To do this, the EJ index combines data on low income and people of color populations with a single environmental indicator.

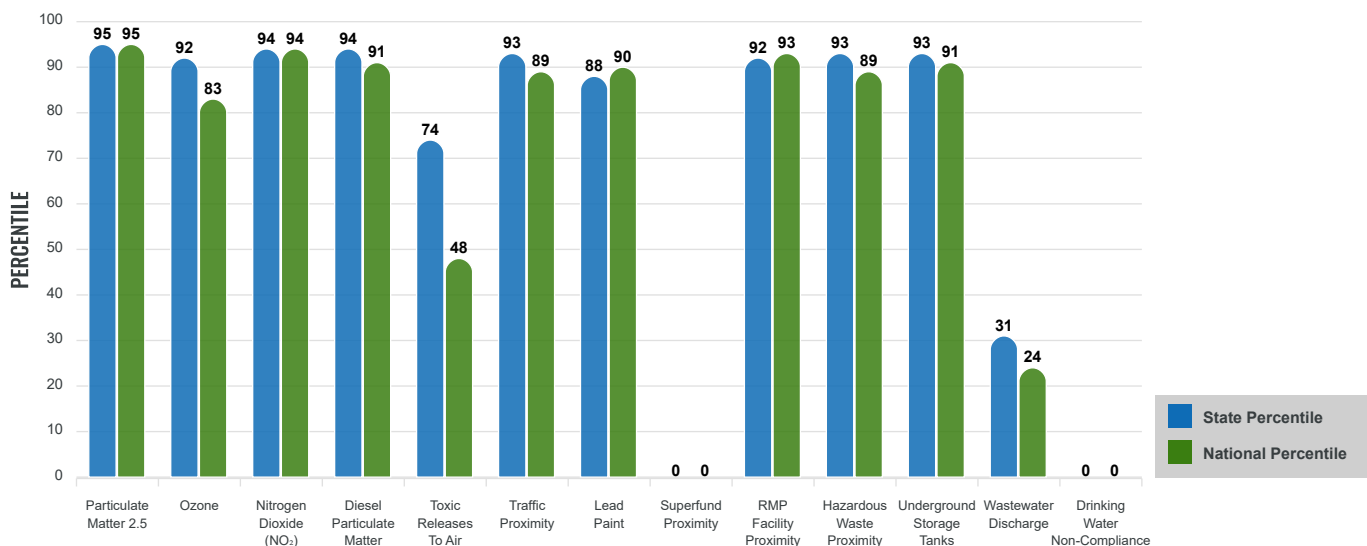
### EJ INDEXES FOR THE SELECTED LOCATION



## SUPPLEMENTAL INDEXES

The supplemental indexes offer a different perspective on community-level vulnerability. They combine data on percent low income, percent persons with disabilities, percent less than high school education, percent limited English speaking, and percent low life expectancy with a single environmental indicator.

### SUPPLEMENTAL INDEXES FOR THE SELECTED LOCATION



Report for Tract: 40109107002

Report produced September 30, 2024 using EJScreen Version 2.3

# EJScreen Environmental and Socioeconomic Indicators Data

SELECTED VARIABLES	VALUE	STATE AVERAGE	PERCENTILE IN STATE	USA AVERAGE	PERCENTILE IN USA
<b>ENVIRONMENTAL BURDEN INDICATORS</b>					
Particulate Matter 2.5 (µg/m <sup>3</sup> )	9.95	9.1	93	8.45	87
Ozone (ppb)	61.7	59.2	76	61.8	56
Nitrogen Dioxide (NO <sub>2</sub> ) (ppbv)	13	7.2	92	7.8	91
Diesel Particulate Matter (µg/m <sup>3</sup> )	0.241	0.129	90	0.191	74
Toxic Releases to Air (toxicity-weighted concentration)	150	4,100	49	4,600	28
Traffic Proximity (daily traffic count/distance to road)	1,900,000	620,000	90	1,700,000	71
Lead Paint (% Pre-1960 Housing)	0.52	0.24	81	0.3	75
Superfund Proximity (site count/km distance)	0	0.16	0	0.39	0
RMP Facility Proximity (facility count/km distance)	1.3	0.57	88	0.57	86
Hazardous Waste Proximity (facility count/km distance)	3.4	0.82	94	3.5	70
Underground Storage Tanks (count/km <sup>2</sup> )	5.3	1.7	92	3.6	80
Wastewater Discharge (toxicity-weighted concentration/m distance)	0.073	380	18	700000	14
Drinking Water Non-Compliance (points)	0	13	0	2.2	0
<b>SOCIOECONOMIC INDICATORS</b>					
Demographic Index USA	2.32	N/A	N/A	1.34	84
Supplemental Demographic Index USA	2.38	N/A	N/A	1.64	86
Demographic Index State	3.01	1.8	89	N/A	N/A
Supplemental Demographic Index State	2.2	1.53	84	N/A	N/A
People of Color	71%	36%	92	40%	78
Low Income	51%	37%	74	30%	82
Unemployment Rate	10%	5%	86	6%	82
Limited English Speaking Households	6%	2%	88	5%	77
Less Than High School Education	39%	12%	97	11%	96
Under Age 5	6%	6%	54	5%	61
Over Age 64	12%	16%	33	18%	33

\*Diesel particulate matter index is from the EPA's Air Toxics Data Update, which is the Agency's ongoing, comprehensive evaluation of air toxics in the United States. This effort aims to prioritize air toxics, emission sources, and locations of interest for further study. It is important to remember that the air toxics data presented here provide broad estimates of health risks over geographic areas of the country, not definitive risks to specific individuals or locations. More information on the Air Toxics Data Update can be found at: <https://www.epa.gov/haps/air-toxics-data-update>.

**Sites reporting to EPA within defined area:**

Superfund .....	0
Hazardous Waste, Treatment, Storage, and Disposal Facilities .....	2
Water Dischargers .....	2
Air Pollution .....	9
Brownfields .....	0
Toxic Release Inventory .....	5

**Other community features within defined area:**

Schools .....	0
Hospitals .....	0
Places of Worship .....	8

**Other environmental data:**

Air Non-attainment .....	No
Impaired Waters .....	Yes

Selected location contains American Indian Reservation Lands* .....	No
Selected location contains a "Justice40 (CEJST)" disadvantaged community .....	No
Selected location contains an EPA IRA disadvantaged community .....	Yes

Report for Tract: 40109107002

Report produced September 30, 2024 using EJScreen Version 2.3

## EJScreen Environmental and Socioeconomic Indicators Data

### HEALTH INDICATORS

INDICATOR	VALUE	STATE AVERAGE	STATE PERCENTILE	US AVERAGE	US PERCENTILE
Low Life Expectancy	23%	22%	56	20%	79
Heart Disease	5.7	6.7	29	5.8	51
Asthma	11.4	11.5	48	10.3	80
Cancer	4.5	6.7	5	6.4	14
Persons with Disabilities	10.2%	17.3%	12	13.7%	32

### CLIMATE INDICATORS

INDICATOR	VALUE	STATE AVERAGE	STATE PERCENTILE	US AVERAGE	US PERCENTILE
Flood Risk	6%	8%	49	12%	49
Wildfire Risk	0%	43%	0	14%	0

### CRITICAL SERVICE GAPS

INDICATOR	VALUE	STATE AVERAGE	STATE PERCENTILE	US AVERAGE	US PERCENTILE
Broadband Internet	10%	15%	37	13%	50
Lack of Health Insurance	29%	15%	96	9%	97
Housing Burden	No	N/A	N/A	N/A	N/A
Transportation Access Burden	Yes	N/A	N/A	N/A	N/A
Food Desert	Yes	N/A	N/A	N/A	N/A

Report for Tract: 40109107002

Report produced September 30, 2024 using EJScreen Version 2.3