

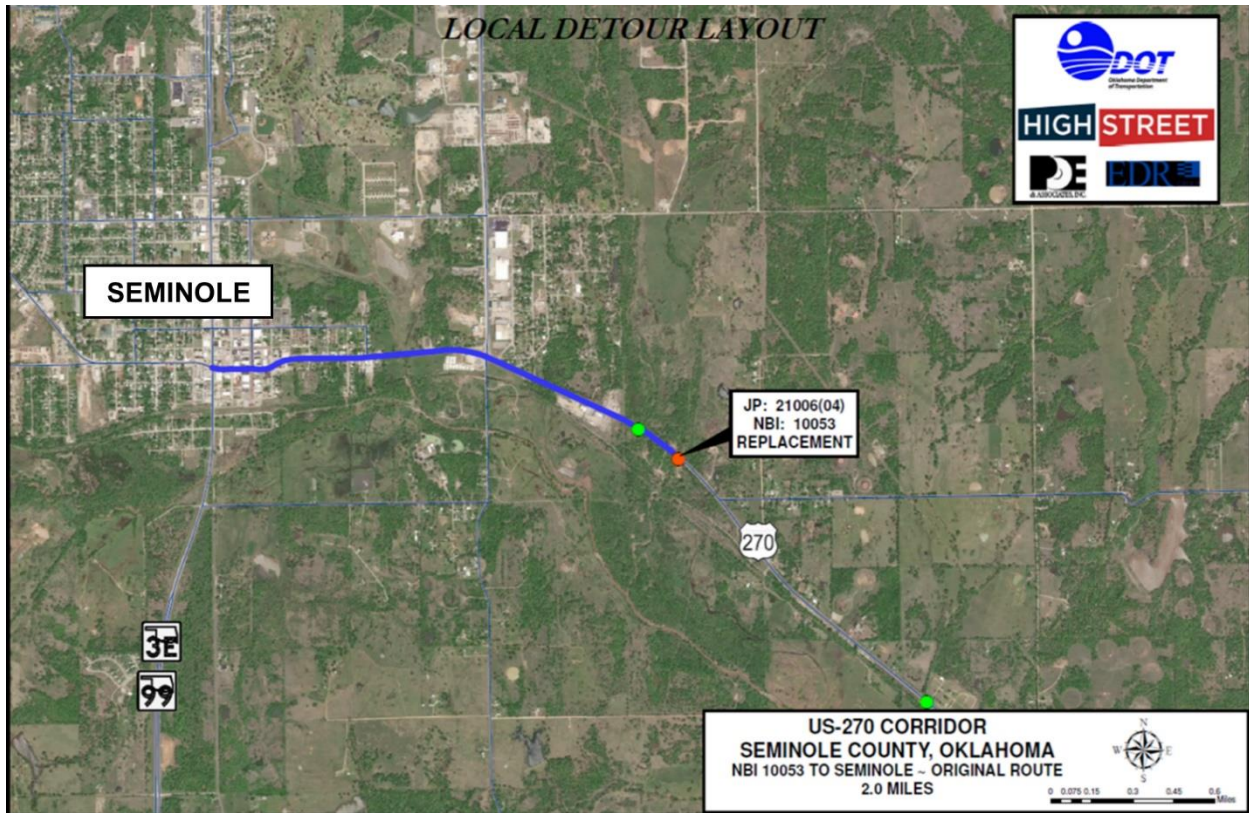
Appendix: Detour Routes

The following maps illustrate the current and expected detour route for each of the Traffic Groups. All seven bridges were assumed to be assigned weight restrictions for truck traffic (e.g. 20 tons) by 2023 and be closed to all traffic by 2033, based on an analysis of current bridge conditions.

TRAFFIC GROUPS #1.1 & #1.2

ORIGINAL ROUTE

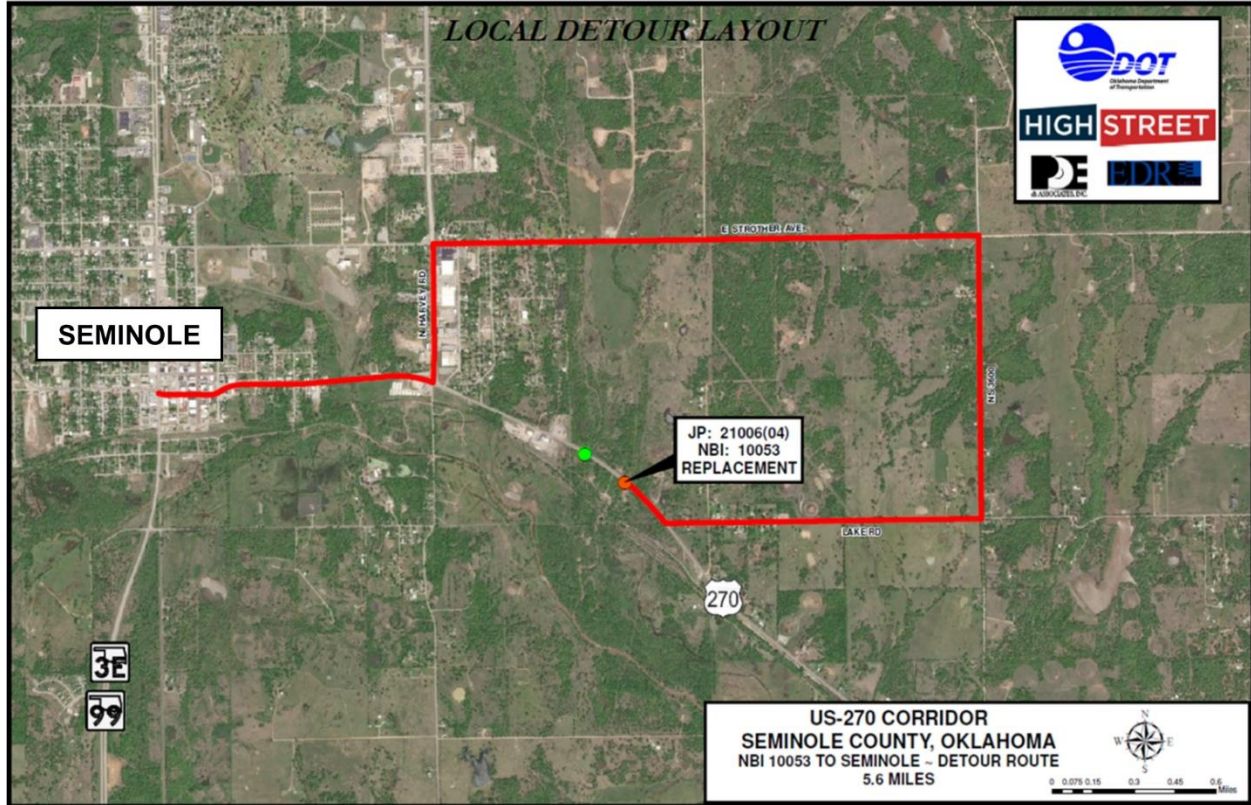
Figure 1: Traffic between Seminole, OK and exit after bridge 10053 (US 270) (Lat.Long: 35.217488, -96.638443). Distance: 2 miles





DETOUR ROUTE

Figure 2: Traffic between Seminole, OK and exit after bridge 10053 (Lat/Long: 35.217488, -96.638443). Distance: 5.6 Miles



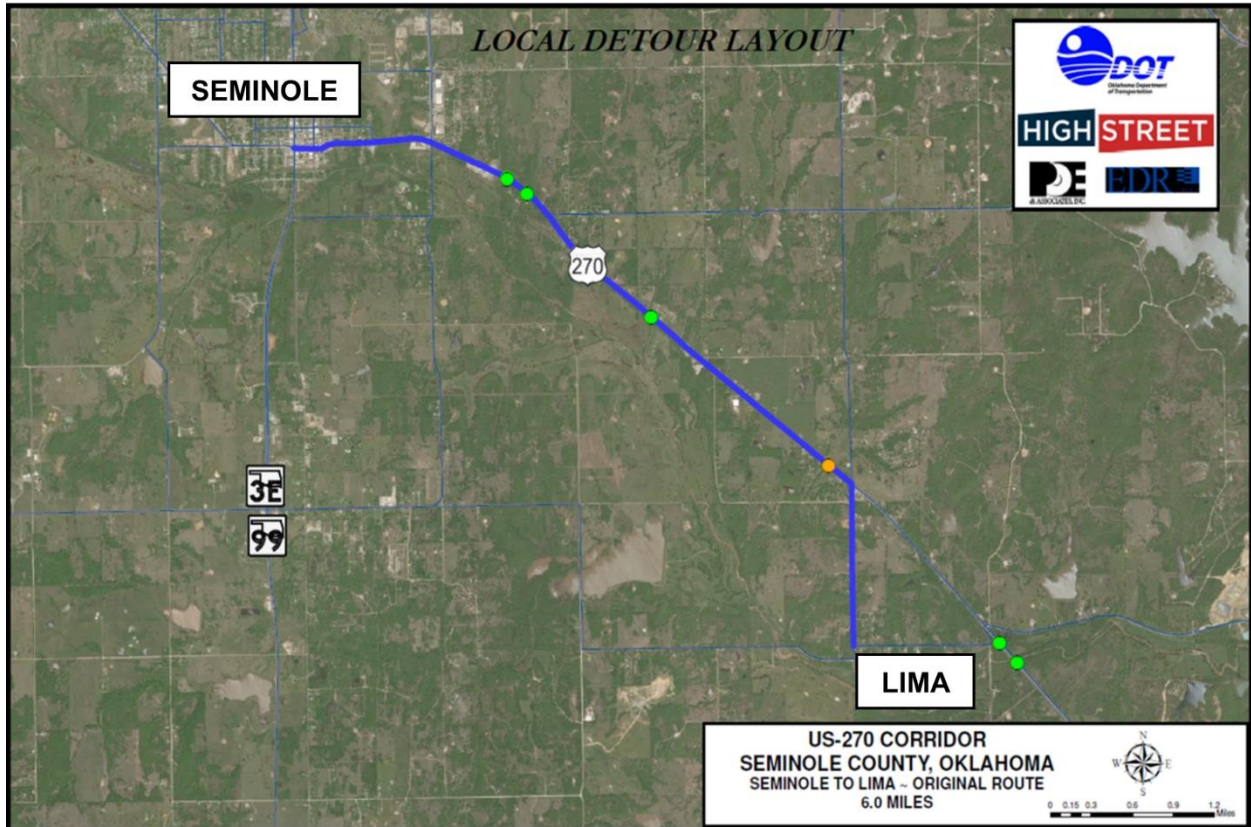


Seven Bridges, US-270,
Seminole County, Oklahoma

TRAFFIC GROUPS #2.1 & #2.2

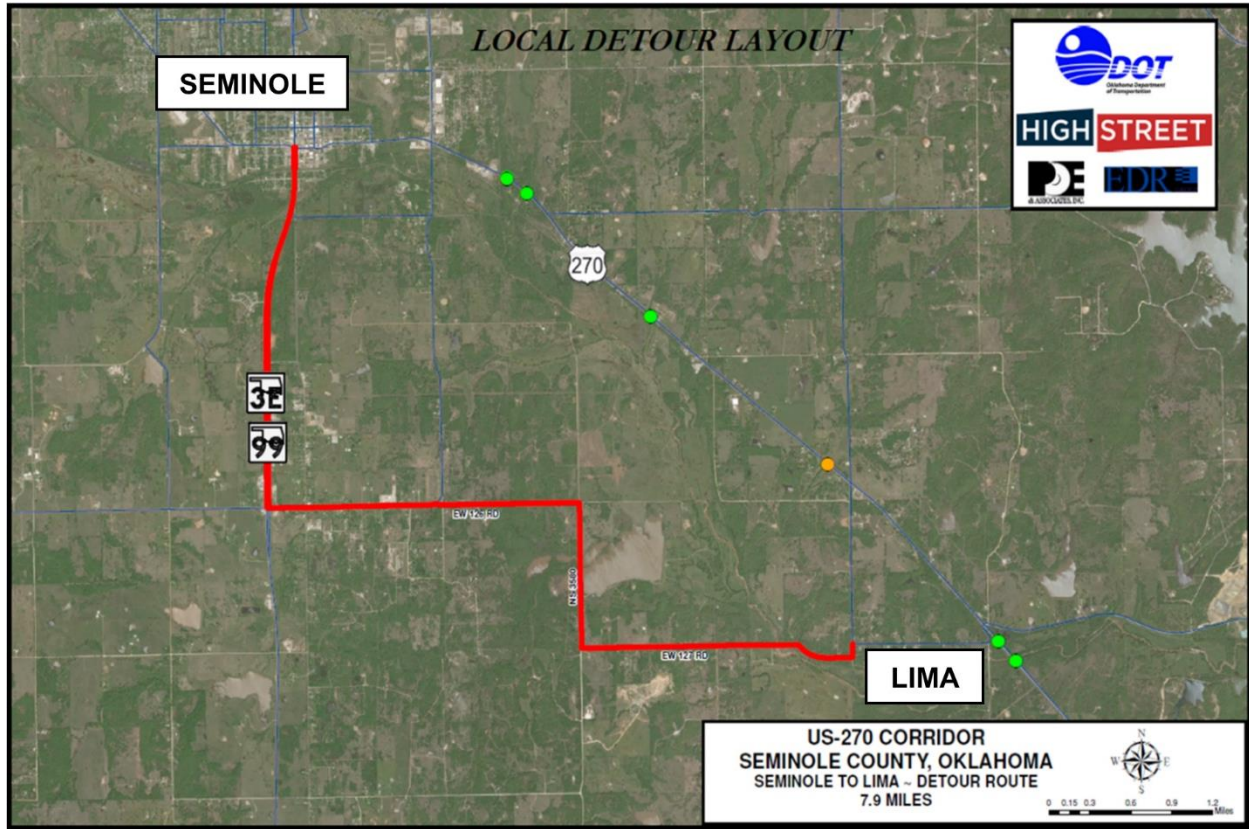
ORIGINAL ROUTE

Figure 3: Traffic between Seminole, OK and Lima, OK (US 270). Distance: 6.0 Miles



DETOUR ROUTE

Figure 4: Traffic between Seminole, OK and Lima, OK (US 270). Distance: 7.9 Miles



TRAFFIC GROUP #3

ORIGINAL & DETOUR ROUTES

Figure 5: Observed Traffic on US 270 and Detour Route for Traffic Group #3. Distance: US 270 (10.7 Miles). Detour (13.8 Miles)

