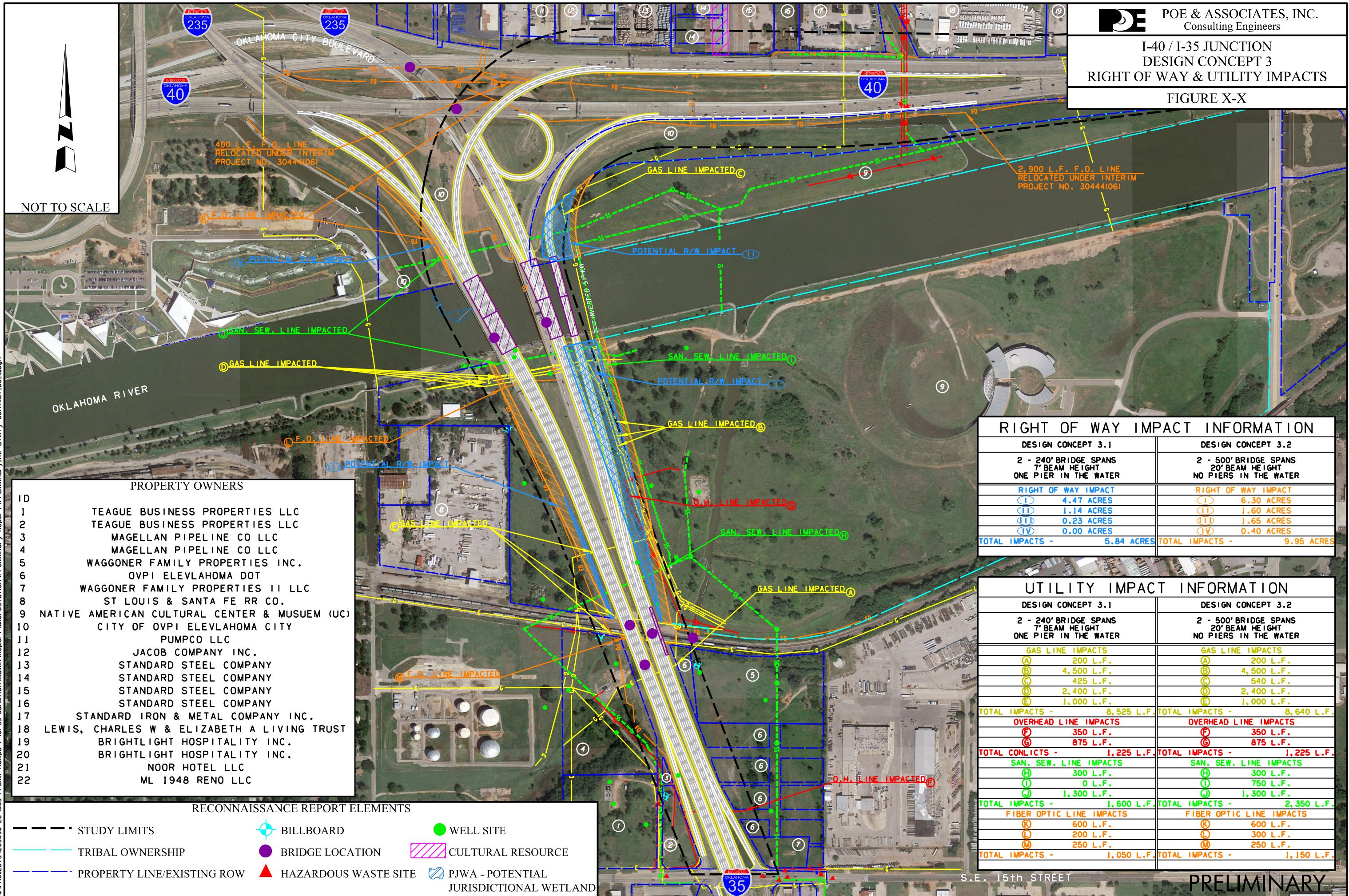


I-40 / I-35 JUNCTION
DESIGN CONCEPT 3
RIGHT OF WAY & UTILITY IMPACTS

FIGURE X-X



NOT TO SCALE

PROPERTY OWNERS

10	
11	
12	
13	
14	
15	
16	
17	
18	
19	
20	
21	
22	

RIGHT OF WAY IMPACT INFORMATION

DESIGN CONCEPT 3.1	DESIGN CONCEPT 3.2
2 - 240' BRIDGE SPANS 7' BEAM HEIGHT ONE PIER IN THE WATER	2 - 500' BRIDGE SPANS 20' BEAM HEIGHT NO PIERS IN THE WATER
RIGHT OF WAY IMPACT	RIGHT OF WAY IMPACT
(I) 4.47 ACRES	(I) 6.30 ACRES
(II) 1.14 ACRES	(II) 1.60 ACRES
(III) 0.23 ACRES	(III) 1.65 ACRES
(IV) 0.00 ACRES	(IV) 0.40 ACRES
TOTAL IMPACTS - 5.84 ACRES	TOTAL IMPACTS - 9.95 ACRES

UTILITY IMPACT INFORMATION

DESIGN CONCEPT 3.1	DESIGN CONCEPT 3.2
2 - 240' BRIDGE SPANS 7' BEAM HEIGHT ONE PIER IN THE WATER	2 - 500' BRIDGE SPANS 20' BEAM HEIGHT NO PIERS IN THE WATER
GAS LINE IMPACTS	GAS LINE IMPACTS
(A) 200 L.F.	(A) 200 L.F.
(B) 4,500 L.F.	(B) 4,500 L.F.
(C) 425 L.F.	(C) 540 L.F.
(D) 2,400 L.F.	(D) 2,400 L.F.
(E) 1,000 L.F.	(E) 1,000 L.F.
TOTAL IMPACTS - 8,525 L.F.	TOTAL IMPACTS - 8,640 L.F.
OVERHEAD LINE IMPACTS	OVERHEAD LINE IMPACTS
(F) 350 L.F.	(F) 350 L.F.
(G) 875 L.F.	(G) 875 L.F.
TOTAL CONFLICTS - 1,225 L.F.	TOTAL IMPACTS - 1,225 L.F.
SAN. SEW. LINE IMPACTS	SAN. SEW. LINE IMPACTS
(H) 300 L.F.	(H) 300 L.F.
(I) 0 L.F.	(I) 750 L.F.
(J) 1,300 L.F.	(J) 1,300 L.F.
TOTAL IMPACTS - 1,600 L.F.	TOTAL IMPACTS - 2,350 L.F.
FIBER OPTIC LINE IMPACTS	FIBER OPTIC LINE IMPACTS
(K) 600 L.F.	(K) 600 L.F.
(L) 200 L.F.	(L) 300 L.F.
(M) 250 L.F.	(M) 250 L.F.
TOTAL IMPACTS - 1,050 L.F.	TOTAL IMPACTS - 1,150 L.F.

RECONNAISSANCE REPORT ELEMENTS

--- STUDY LIMITS	⊕ BILLBOARD	● WELL SITE
--- TRIBAL OWNERSHIP	● BRIDGE LOCATION	▨ CULTURAL RESOURCE
--- PROPERTY LINE/EXISTING ROW	▲ HAZARDOUS WASTE SITE	⊕ PJWA - POTENTIAL JURISDICTIONAL WETLAND

8:53:34 AM H:\PROJECTS\203090 EC-1663 Prelim Ramps I-40-35 Junction\Admin\Report\MicroStation\Preliminary Report\Utility Conflict-DC.3.dgn

PRELIMINARY