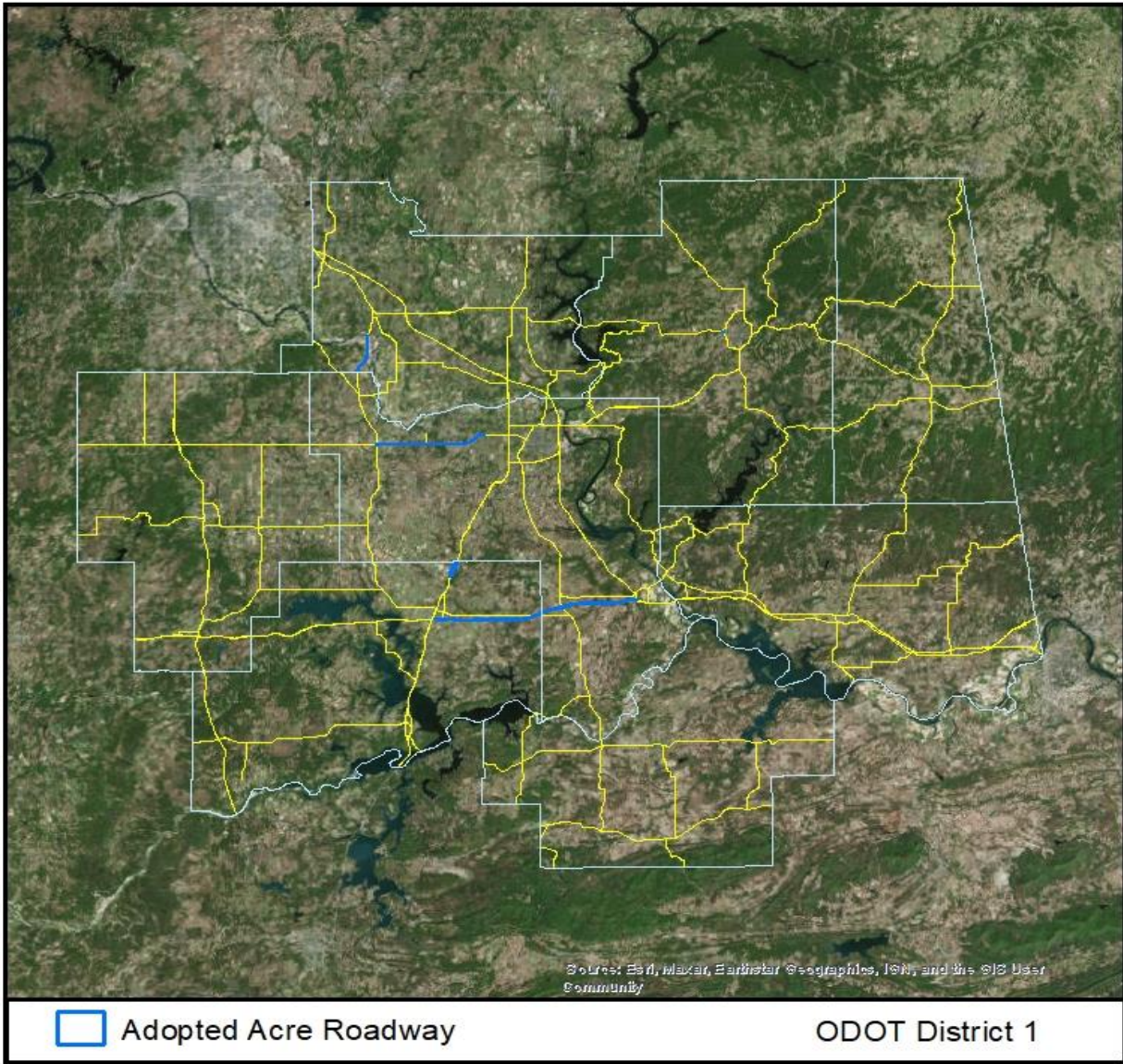




OKLAHOMA  
Transportation

# ODOT Field Districts Monarch CCAA Adopted Acres Map

## District 1 Monarch CCAA Adopted Acres Map

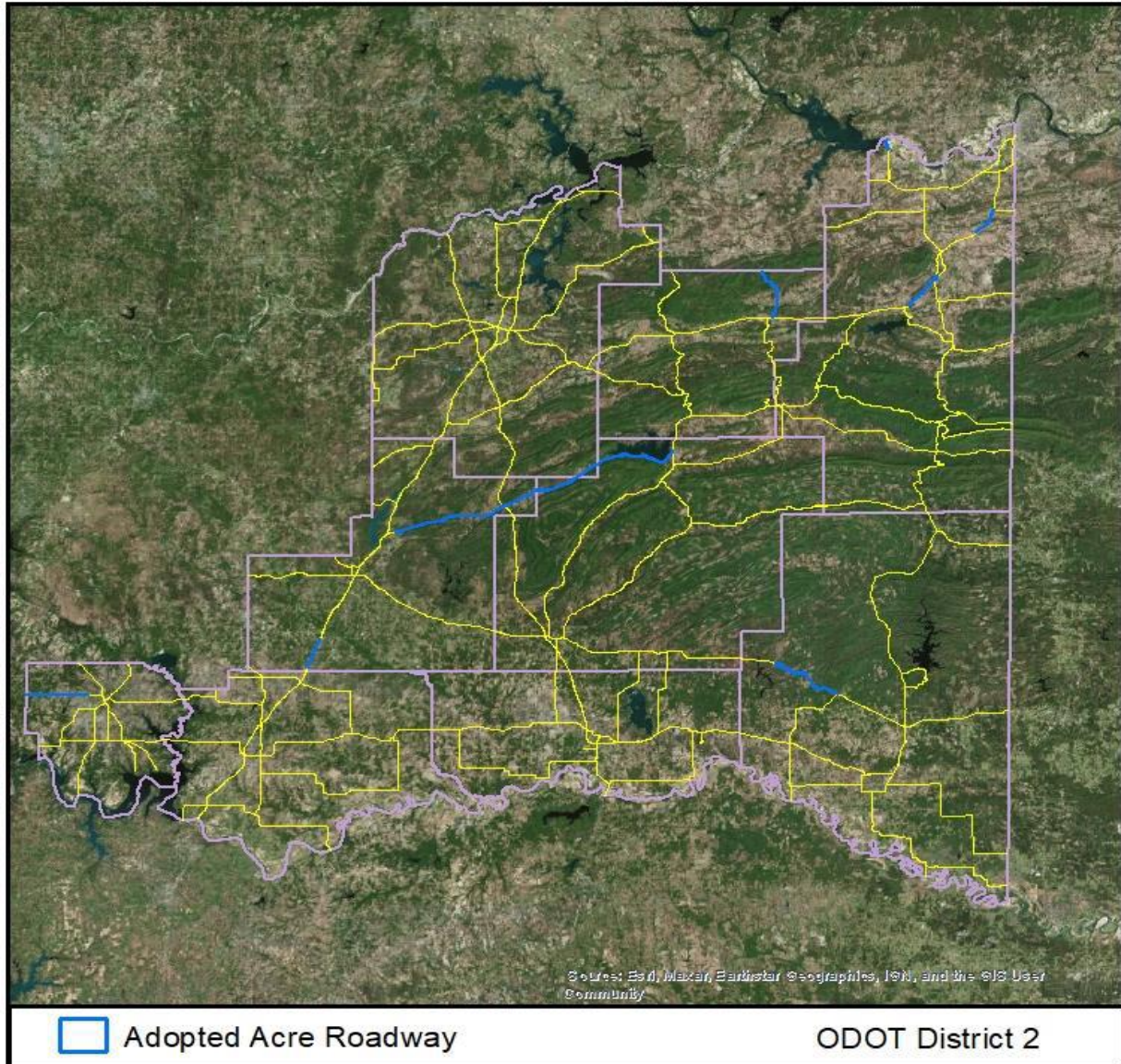


I-40 from Checotah to Webbers Falls-396 acres/ 21.3 mi  
SH 72 S From Arkansas River to Wagoner CL-31 acres/ 4.4 mi  
US 62 Jamesville to Muskogee-145 acres/ 11.3 mi  
US 69 from McIntosh Surplus Parcel N to McIntosh CL-26.5 acres/ 1.7 mi  
McIntosh Surplus Parcel 35.539744°-95.504430°-63 acres  
Tahlequah Surplus Parcel 35.918949°-95.004112°-14 acres



# ODOT Field Districts Monarch CCAA Adopted Acres Map

## District 2 Monarch CCAA Adopted Acres Map



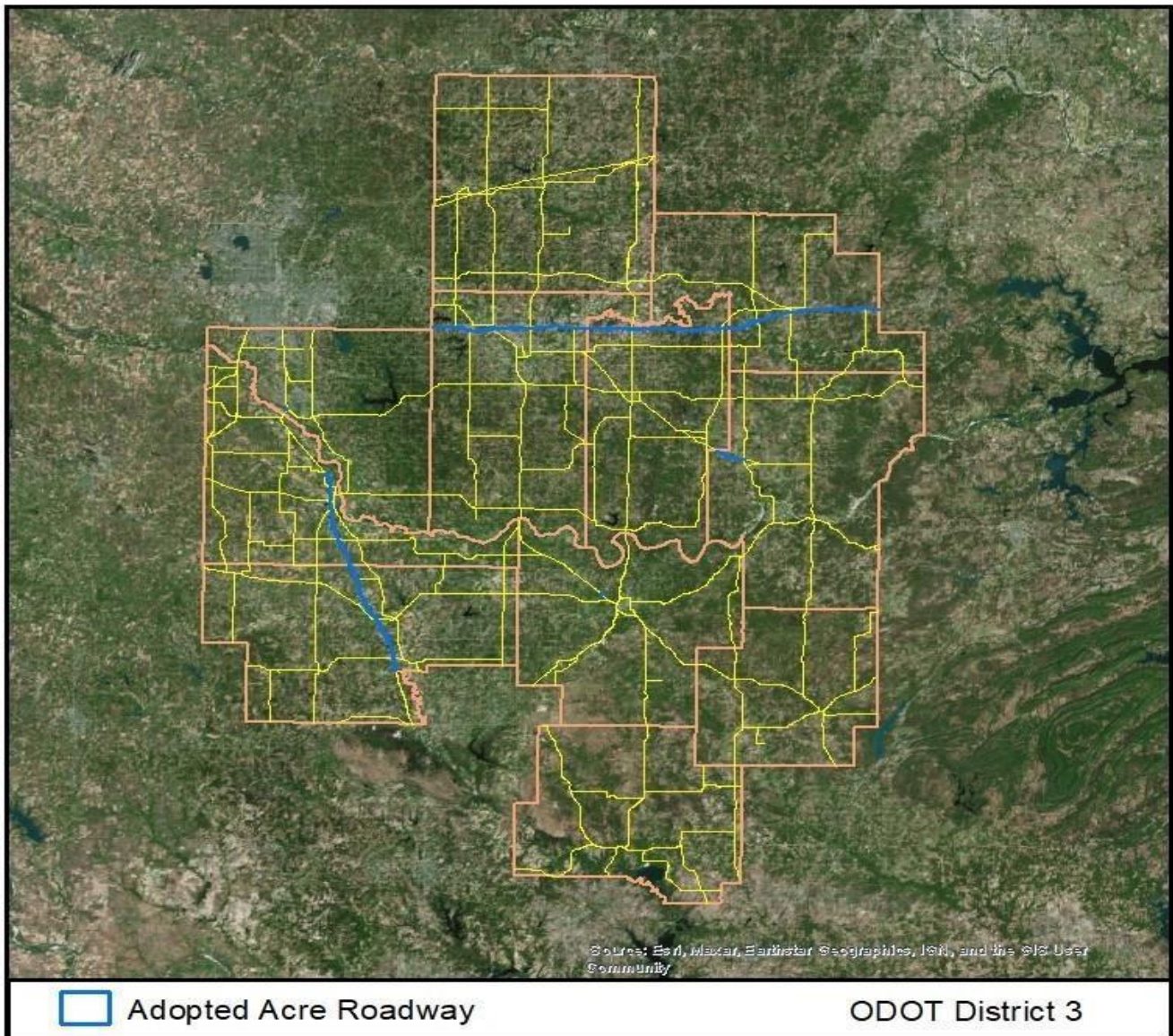
- US 69 S of Caney-Median Only-32 acres/ 4.8
- SH 112 N of Cameron up to SH 120 - North side only-48 acres/ 4.5 mi
- SH 82 from Haskell CL to US 270-112 acres/ 8.4 mi
- SH 271 S of Poteau to Wister-71 acres/ 6.4 mi
- SH 43 from Stringtown to Clayton-277 acres/ 44.8 mi
- SH 59 South of Kerr Lock-35 acres/ 1.6 mi
- US 70 west of Madill to Hawkins Hunter Rd-60 acres/ 9 mi
- SH-3 from SH-98 JCT to South Pole Country Store-66 acres/ 11.4 mi



OKLAHOMA  
Transportation

# ODOT Field Districts Monarch CCAA Adopted Acres Map

## District 3 Monarch CCAA Adopted Acres Map



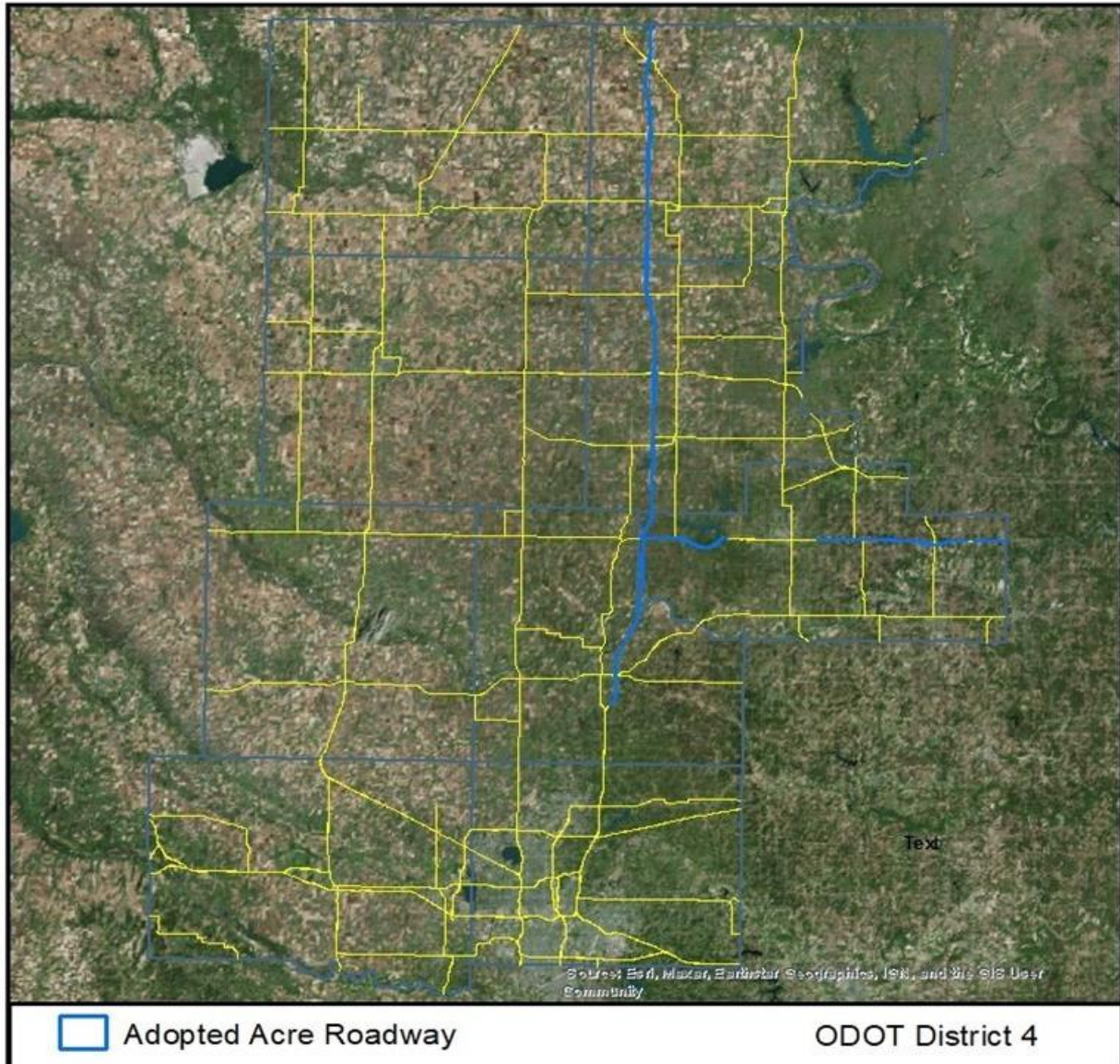
- I-35 From Ruppe Rd (MM 60) to MM 96-325 acres/ 32.4 mi
- I-40 Oklahoma CL to Okmulgee CL-890 acres/ 60.4 mi
- US-270 W of Holdenville to EW 131-54 acres/ 4 mi
- I-40 Rest Area 35.384319°/ -96.739174°-52 acres
- I-35/SH-9 Interchange 35.197529°/97.482622°-11 acres
- SH-3 West Wildflower Plot 34.799127°/-96.739014°-1 acres



OKLAHOMA  
Transportation

# ODOT Field Districts Monarch CCAA Adopted Acres Map

## District 4 Monarch CCAA Adopted Acres Map



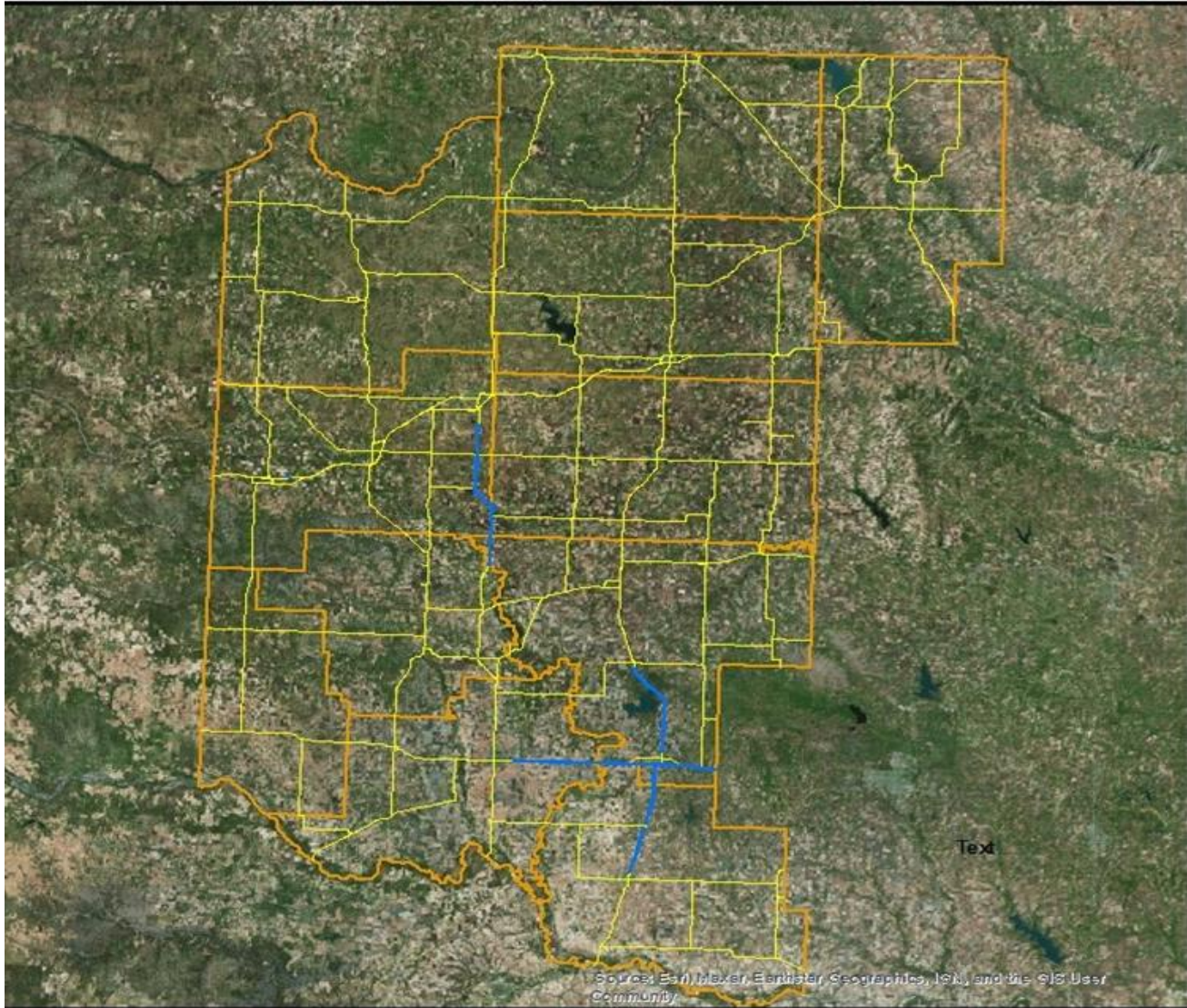
I-35 Corridor from Exit 153 to KS State Line-2,535 acres/ 81.7 mi  
SH-51 Corridor east of I 35 and east and west of Stillwater-346 acres/ 31 mi



OKLAHOMA  
Transportation

# ODOT Field Districts Monarch CCAA Adopted Acres Map

## District 5 Monarch CCAA Adopted Acres Map



 Adopted Acre Roadway

ODOT District 5

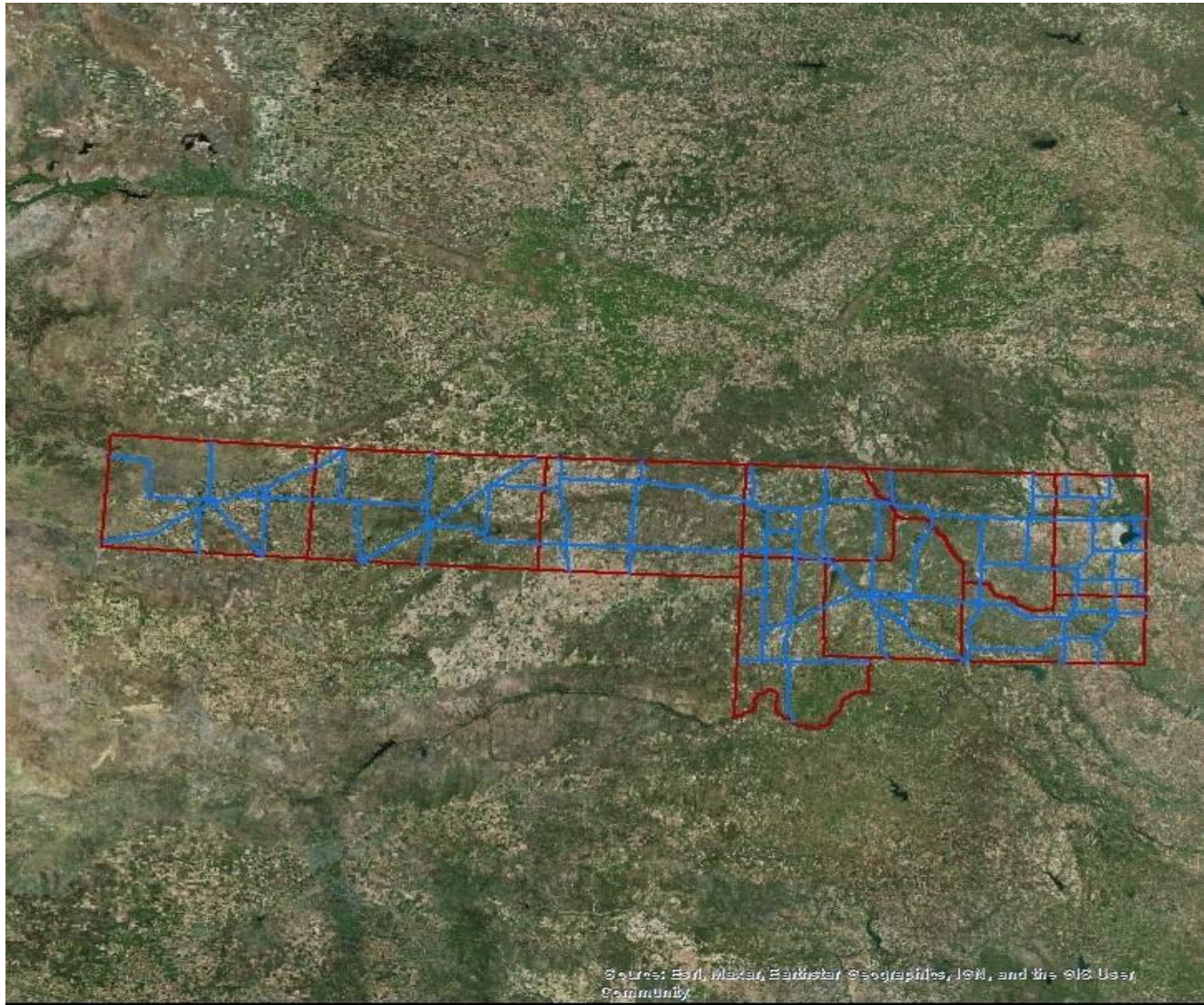
- SH 183 S to Snyder-195 acres/ 14 mi
- SH 6 Elk City to Blair-685 acres/ 42 mi
- SH 62 E of Altus to Comanche CL-691 acres/ 26.4 mi
- SH 183 S from Snyder to Frederick-187 acres/ 16.3 mi
- I 40 Rest Area MM 13- 46 acres



OKLAHOMA  
Transportation

# ODOT Field Districts Monarch CCAA Adopted Acres Map

## District 6 Monarch CCAA Adopted Acres Map



Adopted Acre Roadway

ODOT District 6

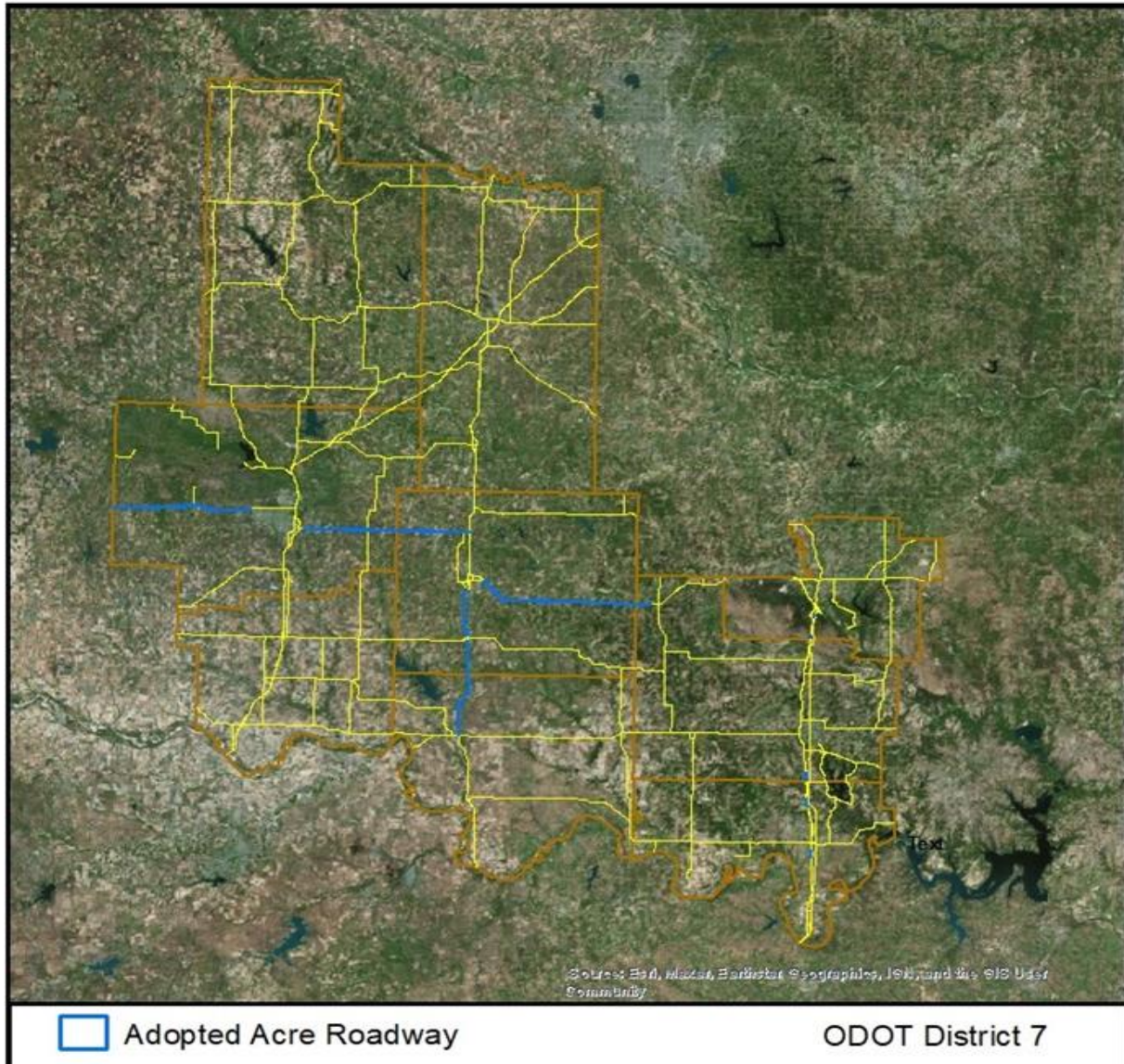
Complete ODOT District 6 Roadway System- 2859 acres/ 1521.18 mi



OKLAHOMA  
Transportation

# ODOT Field Districts Monarch CCAA Adopted Acres Map

## District 7 Monarch CCAA Adopted Acres Map



I 35 Rest Areas and Pullouts- 50 acres

34.550352°/-97.191356°, 34.426027°/-97.135487° 34.381991°/-97.144992°

I 35 Medians-89 acres

34.025251°/-97.147846°, 34.09063°/-97.15094°,33.924690°/-97.134960°

US 62 W of Lawton to Kiowa CL- 343 acres/ 21.7 mi

SH 81 Waurika to Duncan- 237 acres/ 21.3 mi

SH 7 Duncan E to Ratliff City-505 acres/ 24.2 mi

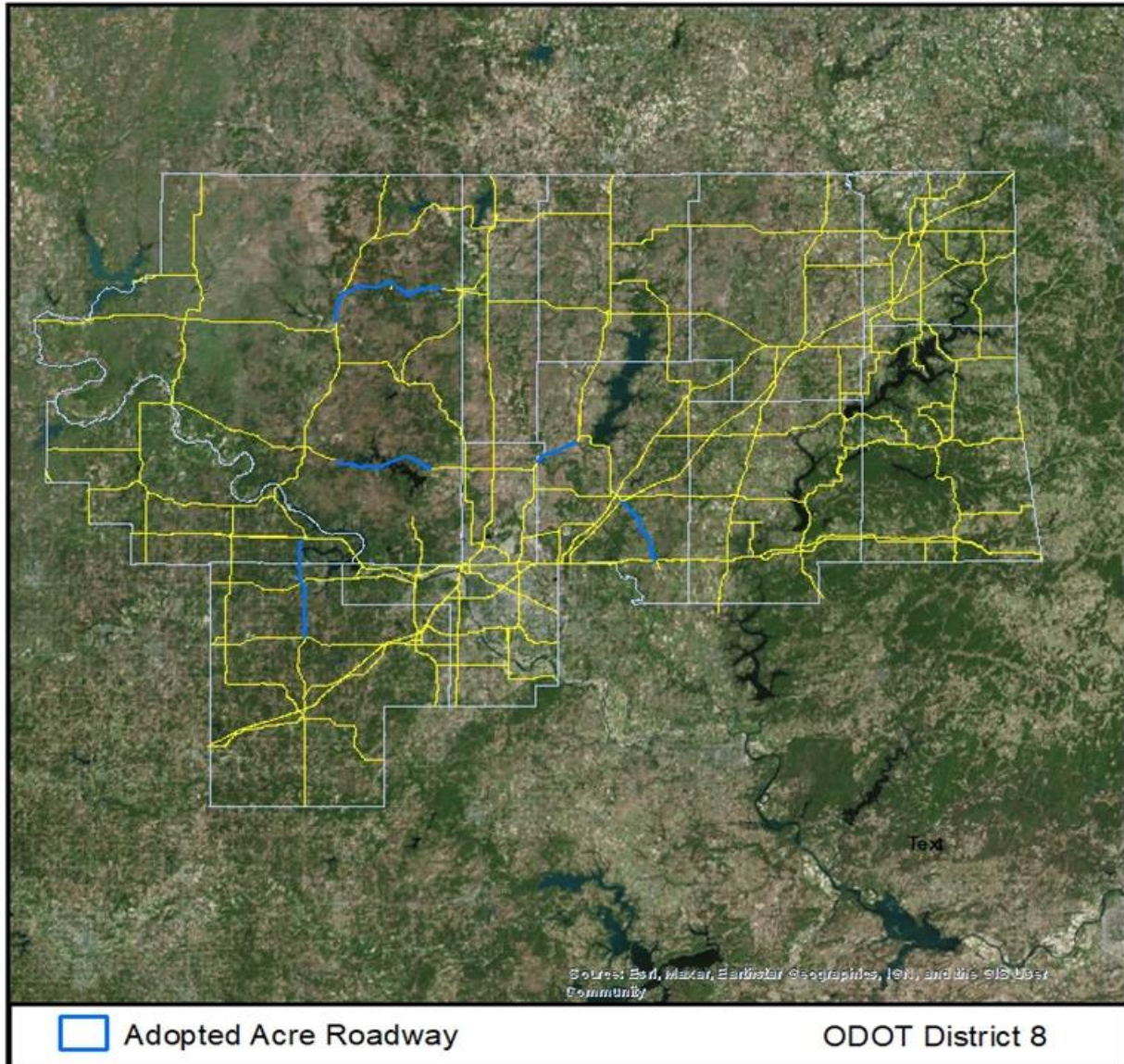
SH 7 Between Lawton and Duncan- 332 acre/ 21.6 mi



OKLAHOMA  
Transportation

# ODOT Field Districts Monarch CCAA Adopted Acres Map

## District 8 Monarch CCAA Adopted Acres Map



- US 60 Pawhuska to Bartlesville-427 acres/ 18.2 mi
- US 169 Collinsville to Oologah-78 acres/ 6.2 mi
- SH 88 from US 412 Junction to Claremore-141 acres/ 10.3 mi
- SH 20 Hominy to Skiatook-153 acres/ 14 mi
- SH 48 S from Cimarron TPK to SH 33-164 acres/ 15 mi