

R13E IM

R14E IM

R15E IM

R16E IM

N3970

N3980

N3990

N4000

N4010

N4020

N4030

N4040

N4050

N4060

N4070

N4080

N4090

N4100

N4110

N4120

N4130

N4140

N4150

N4160

N4170

N4180

N4190

N4200

N4210

N4220

N4230

N4240

N4250

N4260

N4270

N4280

N4290

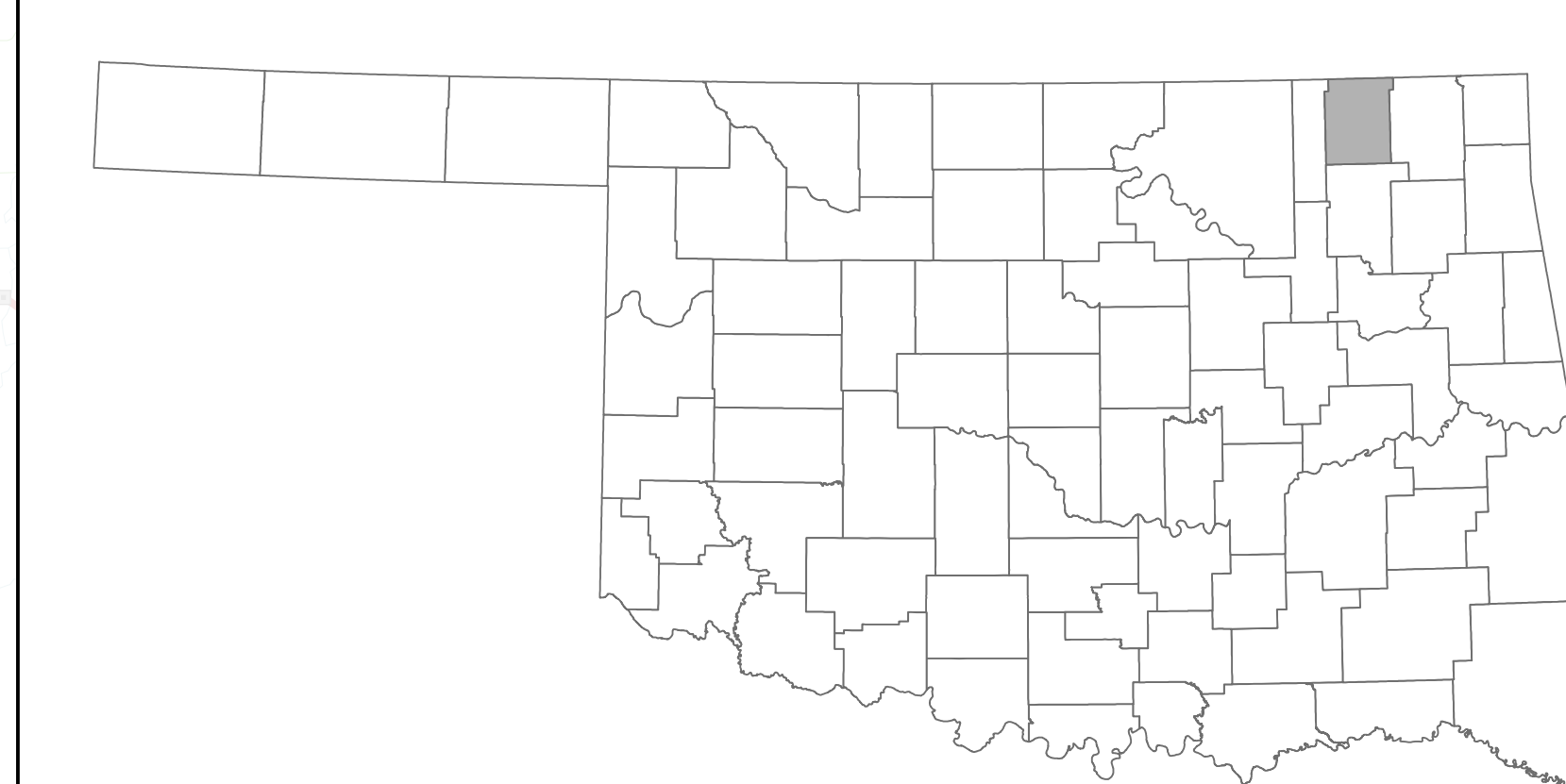
N4300

N4310

NOWATA COUNTY

CENSUS YEAR 2020 POPULATION: 9,320

- INTERSTATE
- U.S. HIGHWAY
- STATE HIGHWAY
- HIGHWAY
- COLLECTOR
- LOCAL ROAD
- ASPHALT
- CONCRETE
- BRICK
- UNPAVED
- BRIDGE
- STREAM
- LAKE
- WILDLIFE REFUGE AREA
- WILDLIFE MANAGEMENT AREA
- STATE PARK
- US MILITARY INSTALLATION
- CITY LIMIT
- COUNTY COMMISSIONER DISTRICT
- COUNTY LINE

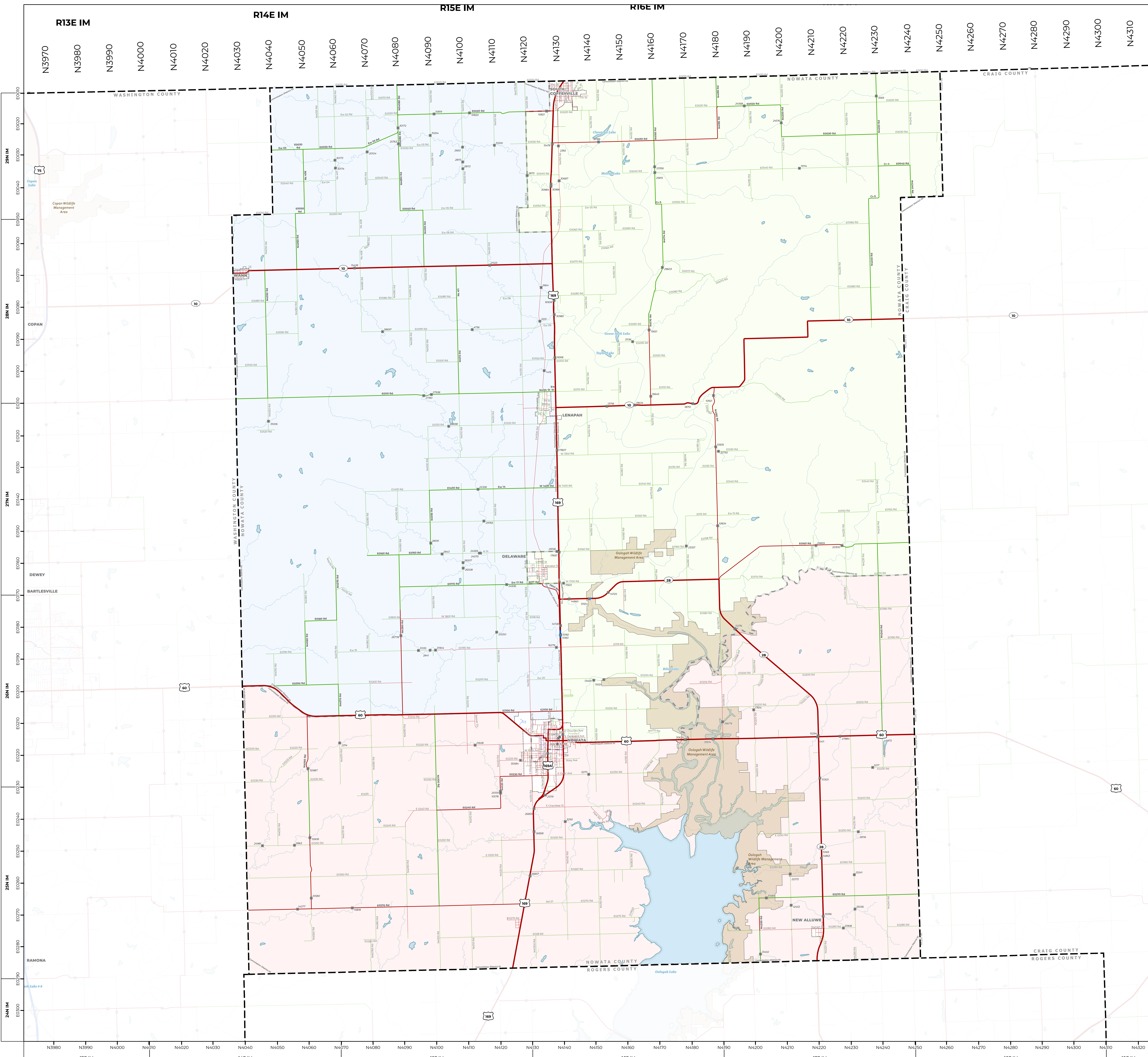


THIS MAP INDICATES THOSE ROADS KNOWN TO THE DEPARTMENT TO BE OPEN TO PUBLIC TRAVEL. PLACEMENT OF A ROAD ON THE MAP HAS NO RELATIONSHIP TO MAINTENANCE RESPONSIBILITY BY ANY LEVEL OF GOVERNMENT.

COPIES OF THIS MAP ARE AVAILABLE FOR PUBLIC USE AT NOMINAL COST.

ADDRESS:
OKLAHOMA DEPARTMENT OF TRANSPORTATION
PRINTING SERVICES
200 NE 21ST STREET
OKLAHOMA CITY, OKLAHOMA 73105-3204
PHONE: (405) 521-2666

ALL RIGHTS RESERVED - COMPUTER GENERATED
APRIL 2, 2024



N3980 N3990 N4000 N4010 N4020 N4030 N4040 N4050 N4060 N4070 N4080 N4090 N4100 N4110 N4120 N4130 N4140 N4150 N4160 N4170 N4180 N4190 N4200 N4210 N4220 N4230 N4240 N4250 N4260 N4270 N4280 N4290 N4300 N4310
13E IM 14E IM 15E IM 16E IM 17E IM 18E IM 19E IM