

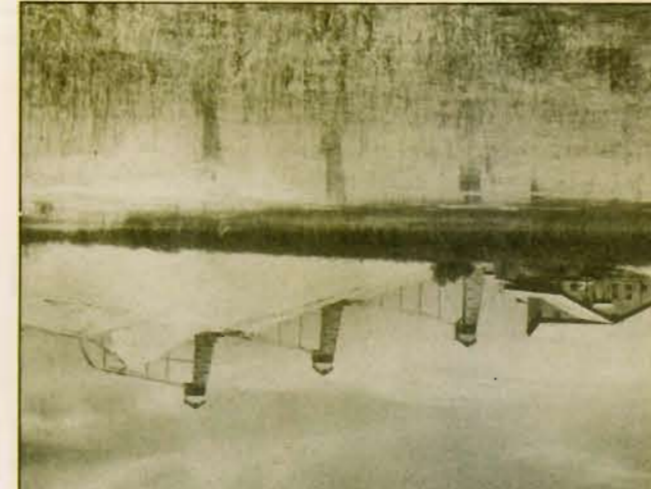
Picturesque view of Lake Clayton, Pushmataha County



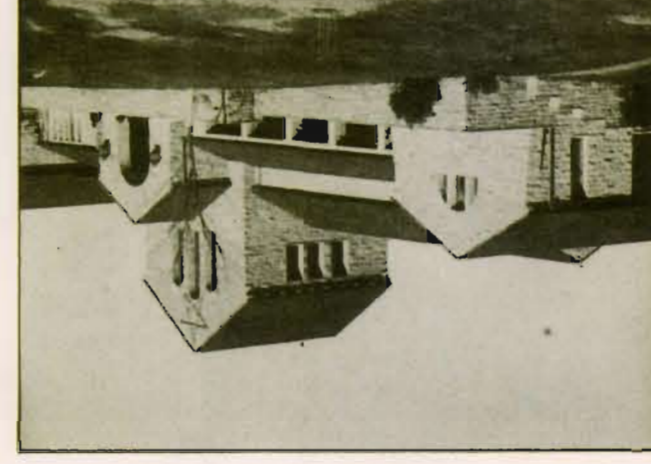
Scenic Curve on U. S. 77 along Cimarron River



Official State Highway Map of Oklahoma, April, 1941



Will Rogers Memorial, U. S. Highway 66



A Rugged Sentinel of Major County

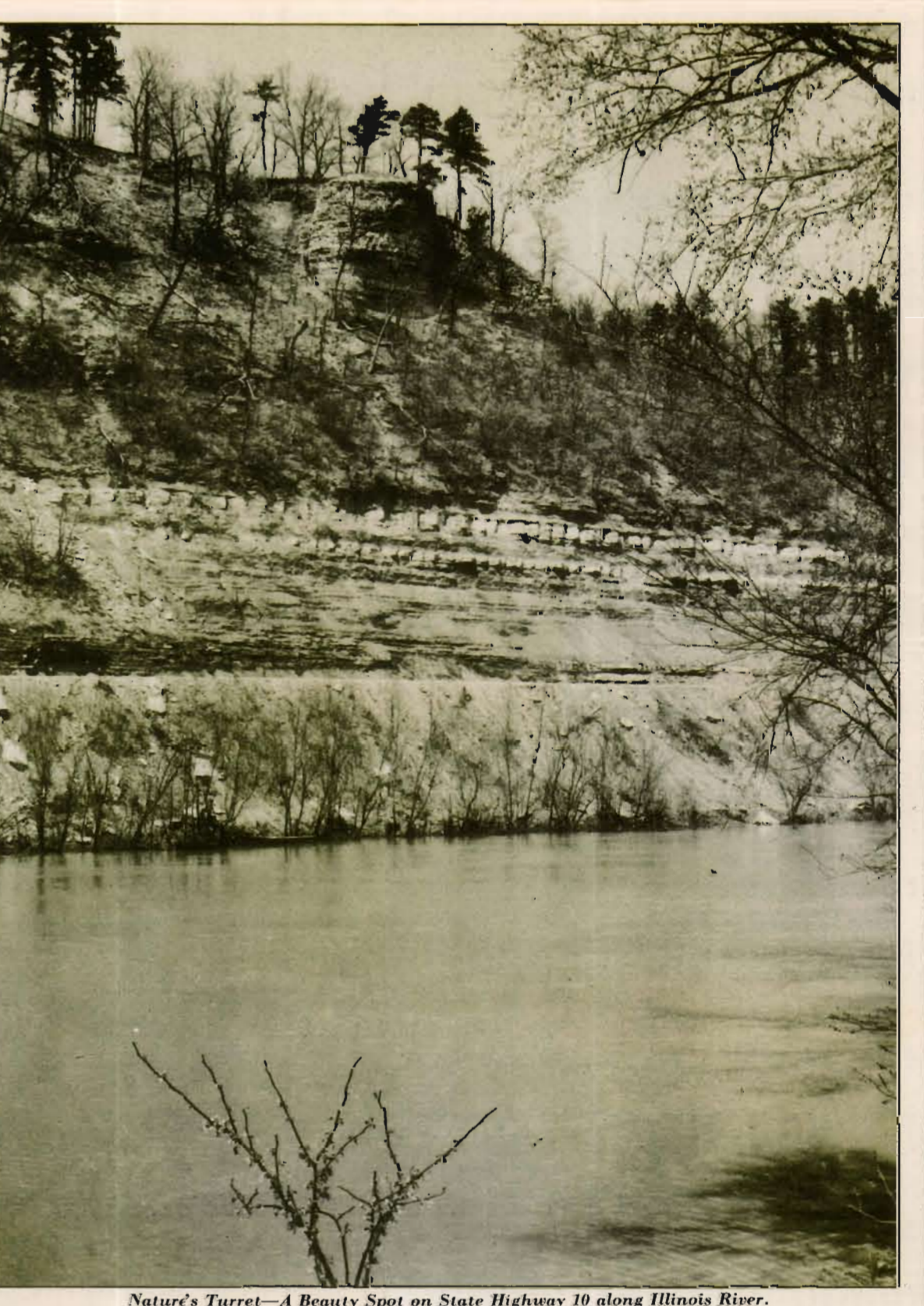
Table with 12 columns: NAME, COUNTY, LOCATION, ACCESS, AGE IN YEARS, RECREATIONAL FACILITIES, and TOPOGRAPHY AND FEATURES OF SPECIAL INTEREST.



Longhorn Cattle in Wichita National Forest and Game Preserve



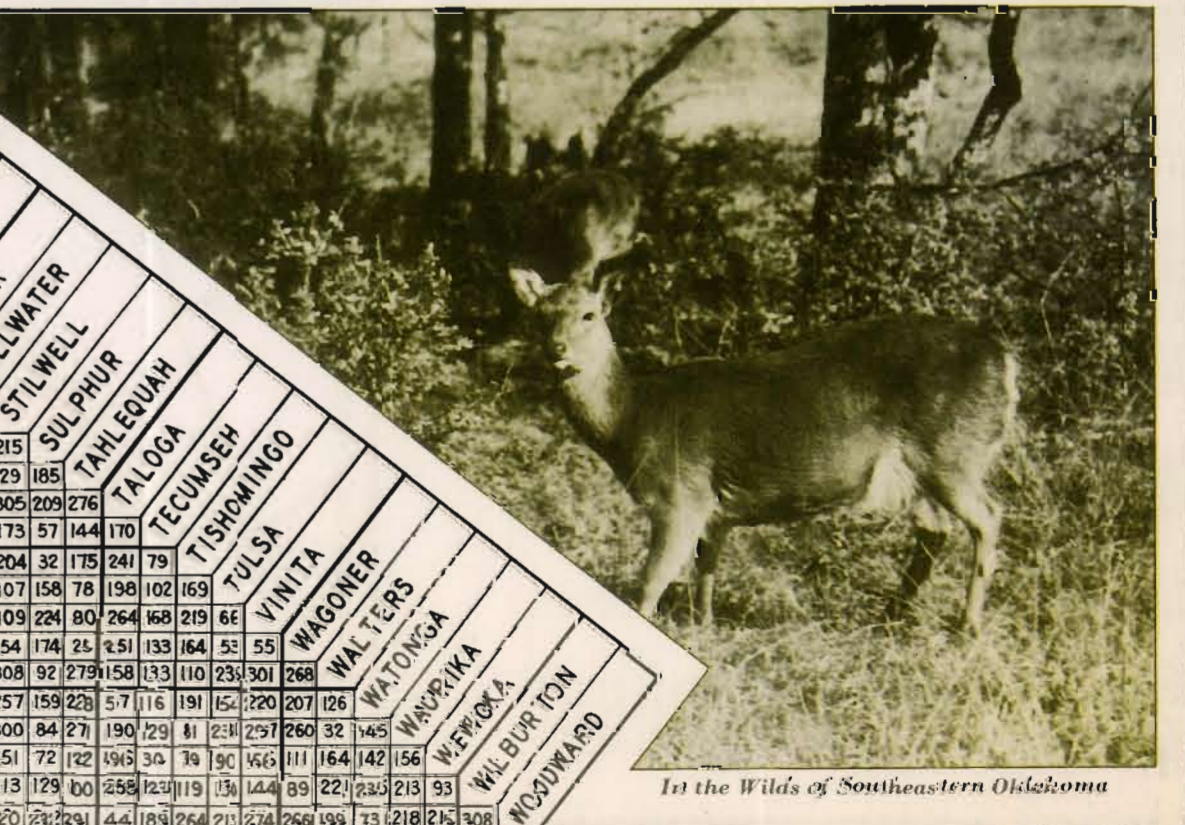
Sunset Scene at Lake Murray in Southern Oklahoma



Nature's Turret—A Beauty Spot on State Highway 10 along Illinois River.



Boiling Springs, one of eight State Parks with Free Accommodations



In the Wilds of Southeastern Oklahoma

A large table listing Oklahoma State Parks with columns for Name, County, Location, Access, Age in Years, Recreational Facilities, and Topography and Features of Special Interest.