

The Oklahoma Department of Transportation I-35 and I-240 Interchange Reconstruction



Agenda

- Introductions
- Project Background
- Design Overview
- Video
- CORSIM Analysis
- Closing Remarks

Introductions








Frank Roesler III, ODOT

- Brian Taylor, ODOT Division 4, Welcome 8 Year Work Plan
- David Streb, Poe & Associates, Background
- Jerry Edgin, Poe & Associates, Design Concept
- Helene Murdock, Poe & Associates, CORSIM

Welcome

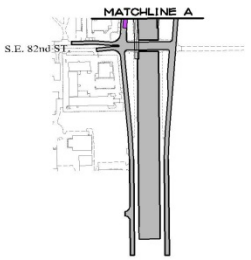
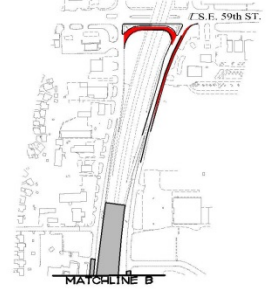
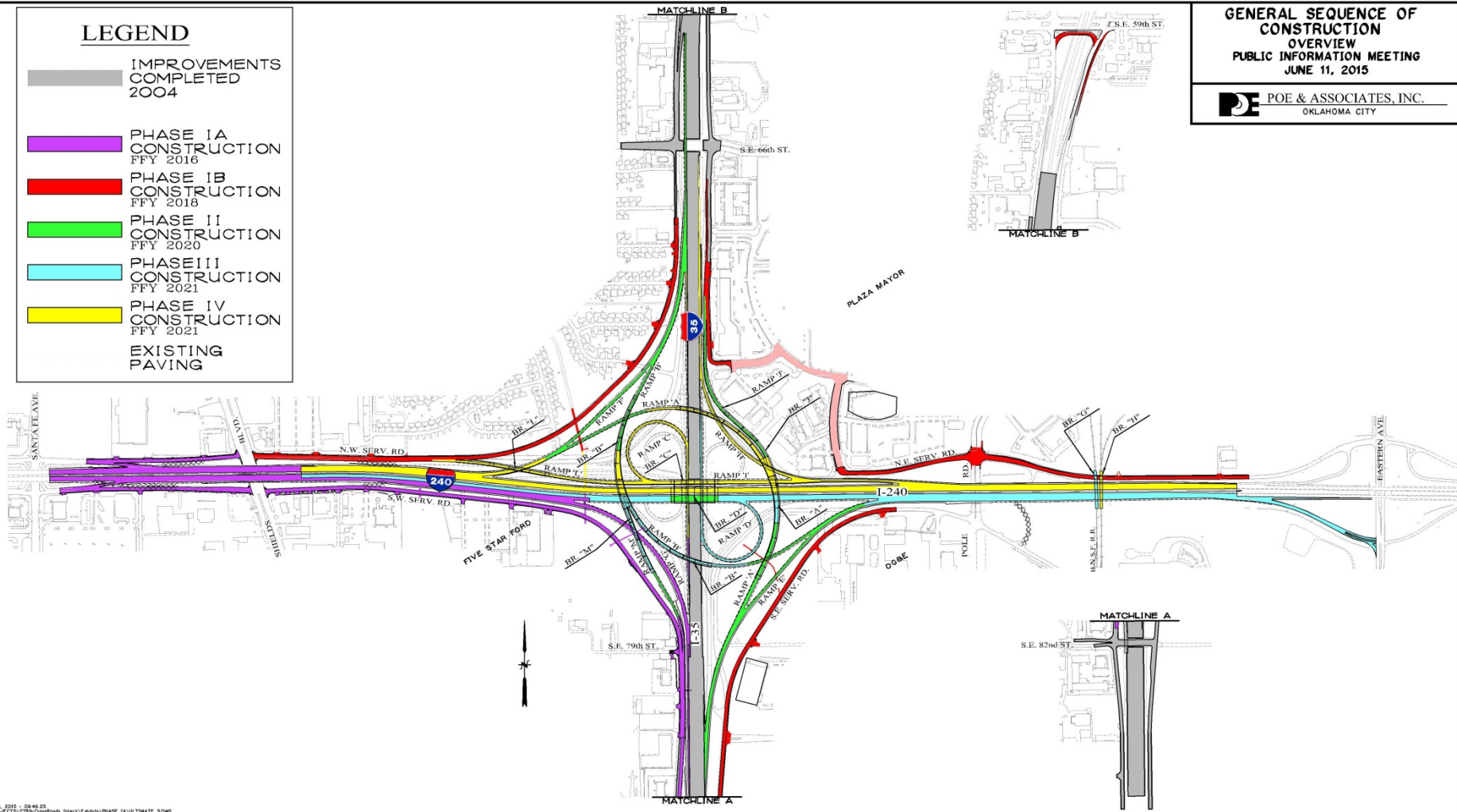
Brian Taylor, ODOT Division 4

LEGEND

-  IMPROVEMENTS COMPLETED 2004
-  PHASE IA CONSTRUCTION FFY 2016
-  PHASE IB CONSTRUCTION FFY 2018
-  PHASE II CONSTRUCTION FFY 2020
-  PHASE III CONSTRUCTION FFY 2021
-  PHASE IV CONSTRUCTION FFY 2021
-  EXISTING PAVING

GENERAL SEQUENCE OF CONSTRUCTION OVERVIEW
 PUBLIC INFORMATION MEETING
 JUNE 11, 2015

 **POE & ASSOCIATES, INC.**
 OKLAHOMA CITY



Project Background

David Streb, Poe & Associates

- Last Public Meeting
- Access Points
- Environmental Assessment

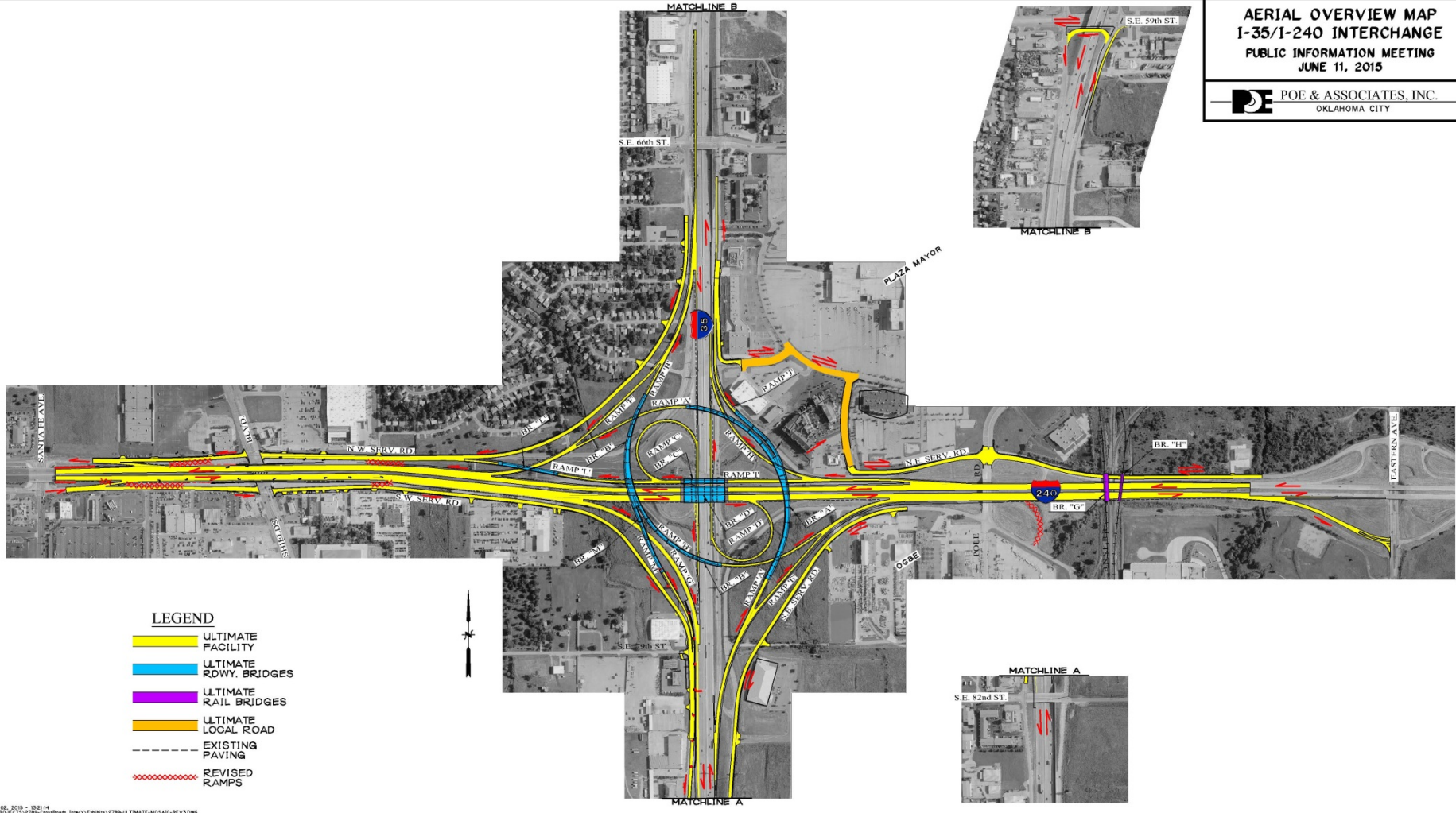
Design Overview

Current Design

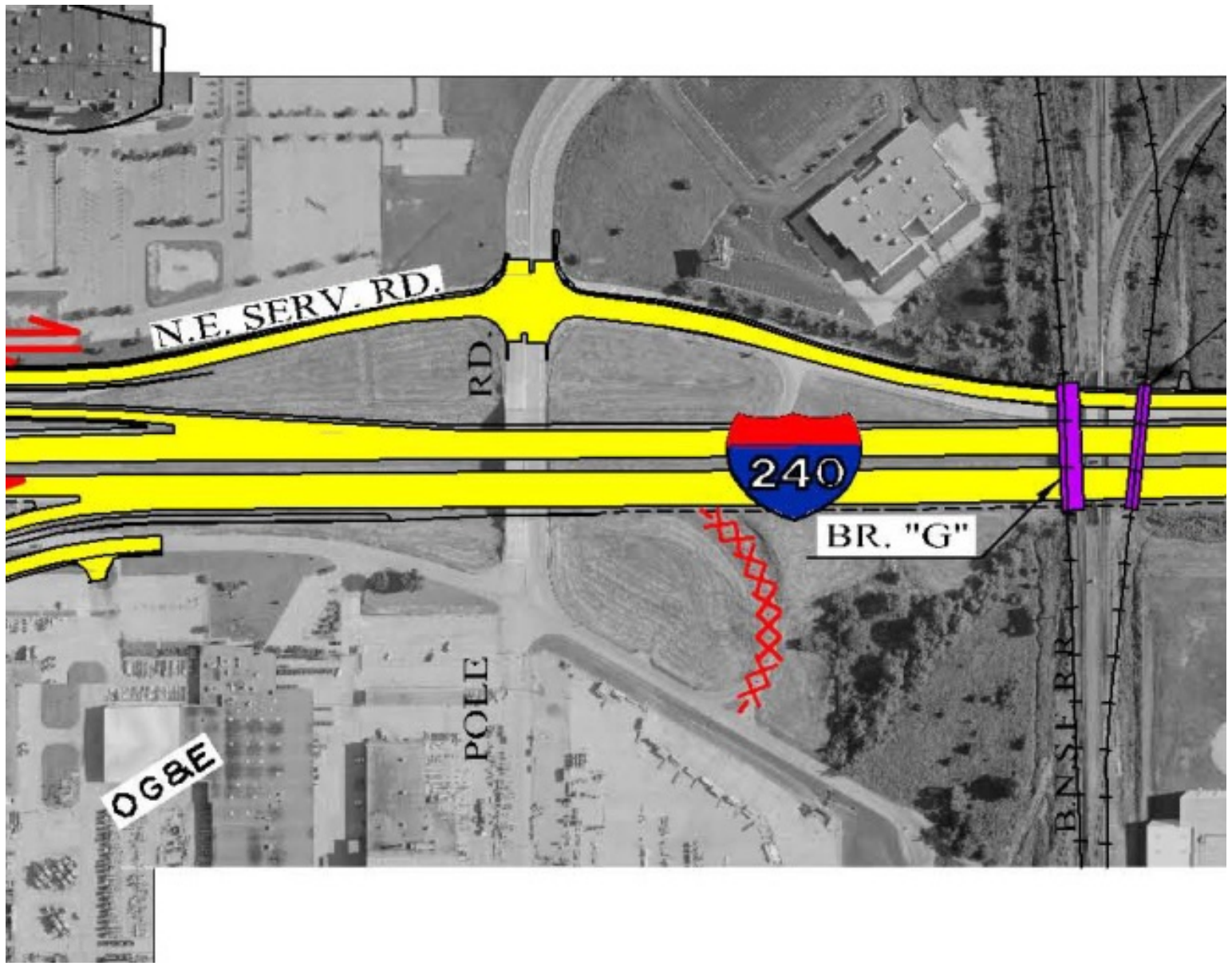
Jerry Edgin, Poe & Associates

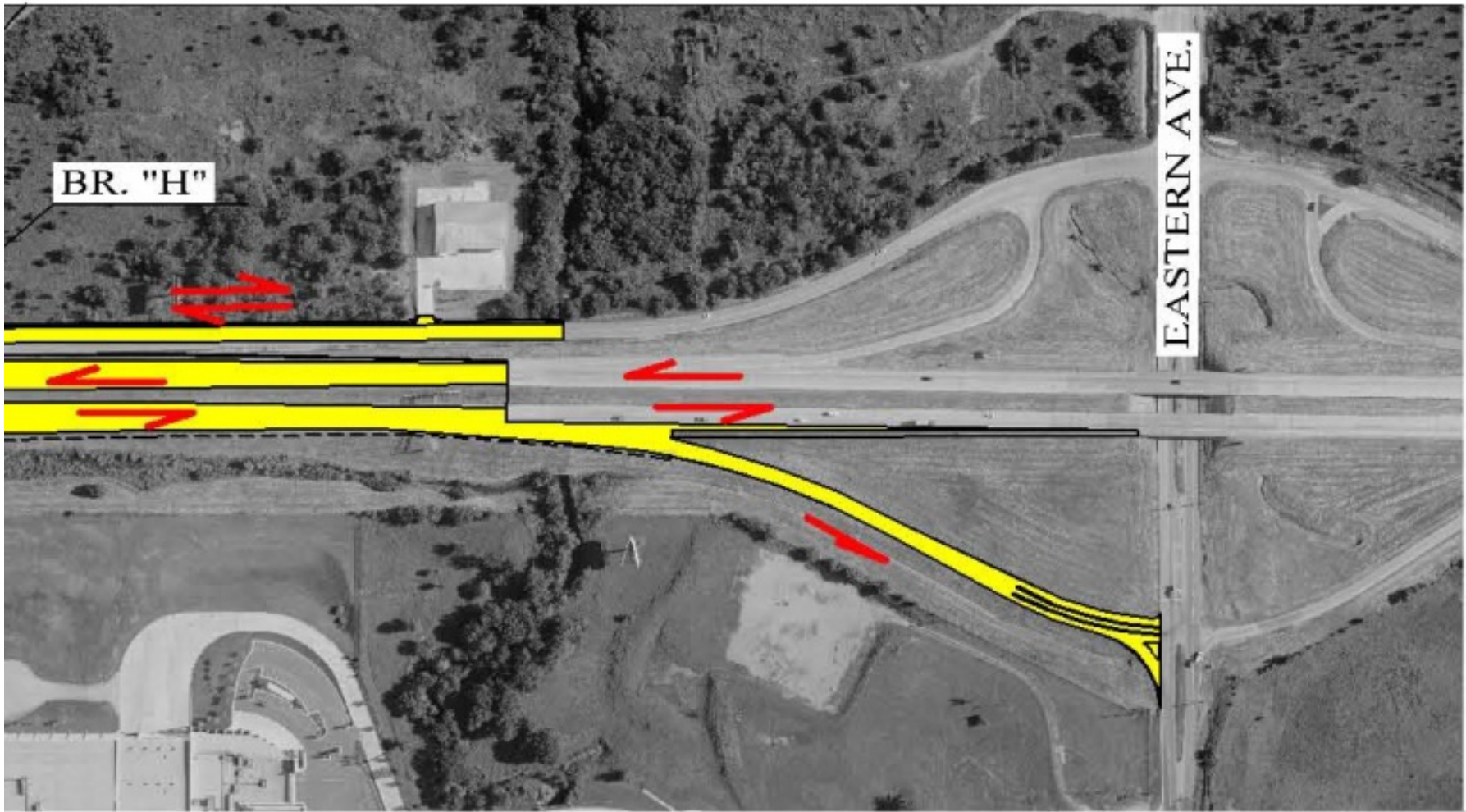
**AERIAL OVERVIEW MAP
I-35/I-240 INTERCHANGE
PUBLIC INFORMATION MEETING
JUNE 11, 2015**

POE & ASSOCIATES, INC.
OKLAHOMA CITY



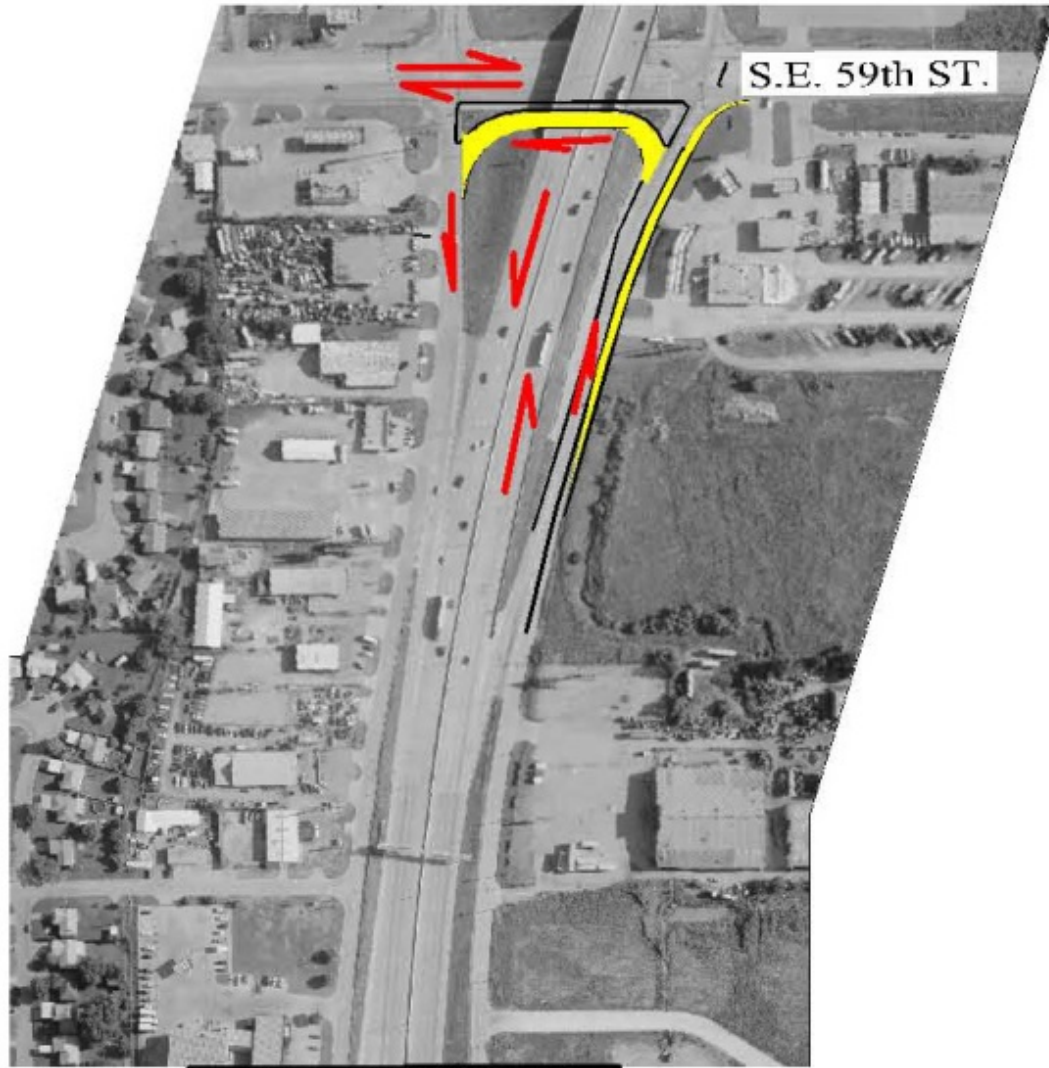
- LEGEND**
- ULTIMATE FACILITY
 - ULTIMATE RDWY, BRIDGES
 - ULTIMATE RAIL BRIDGES
 - ULTIMATE LOCAL ROAD
 - EXISTING PAVING
 - REVISED RAMPS





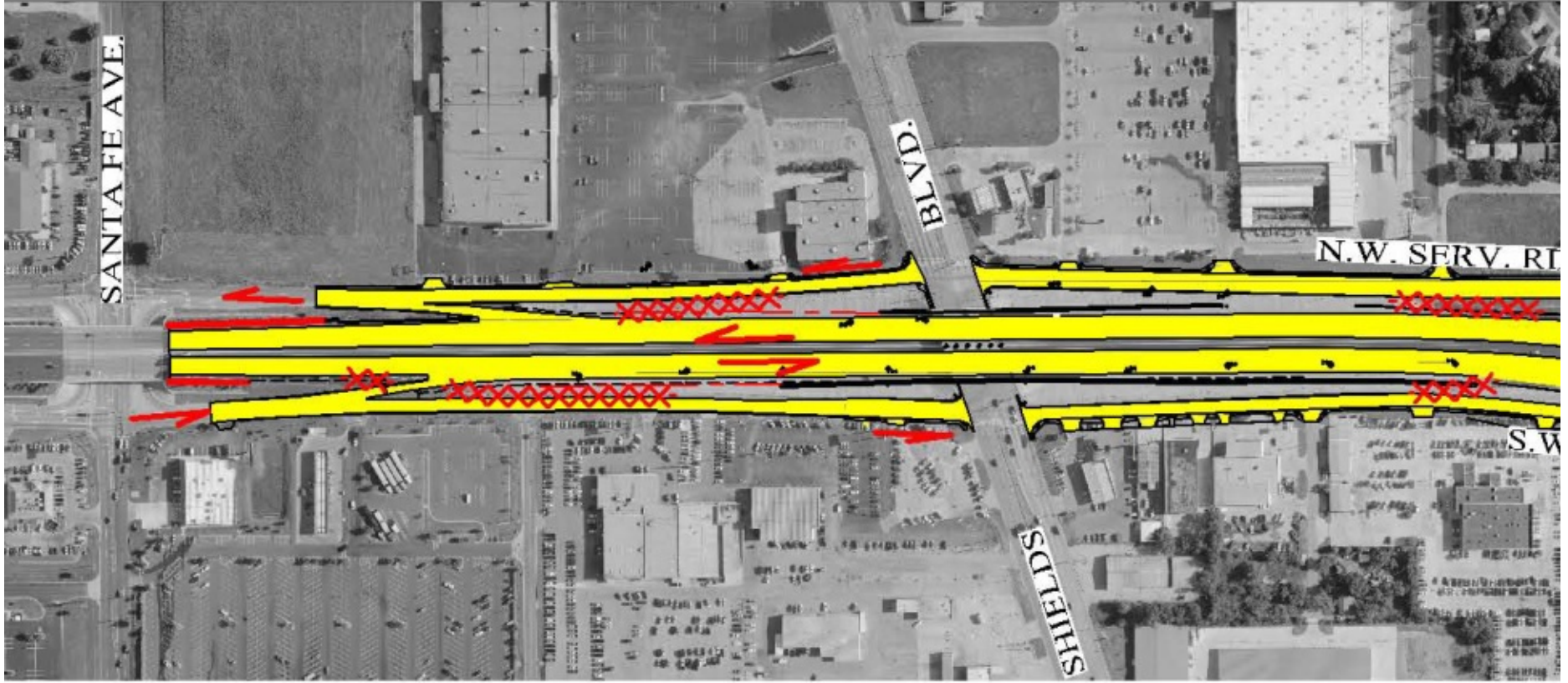
BR. "H"

EASTERN AVE.



S.E. 59th ST.

MATCHLINE B



Design Overview

CORSIM Analysis

Helene Murdock, Poe & Associates

Closing Remarks

Brian Taylor, ODOT Division 4