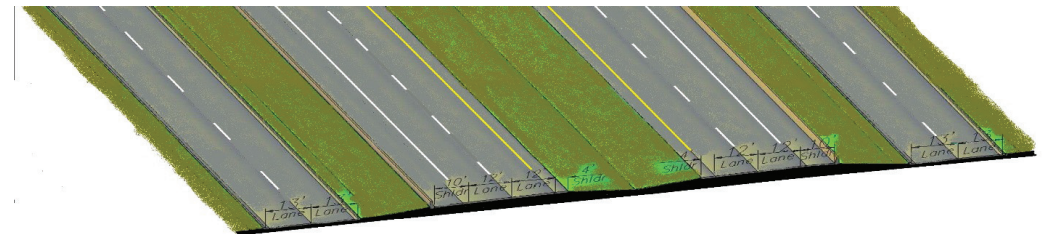
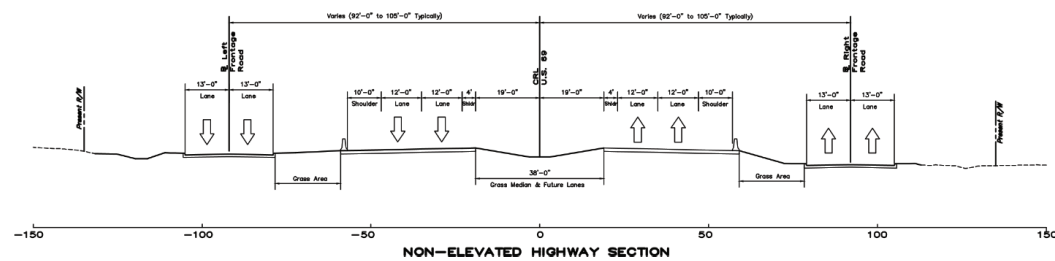
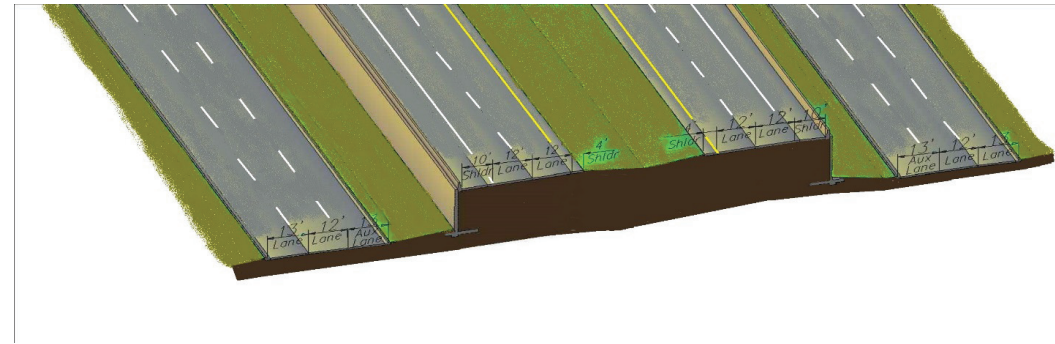
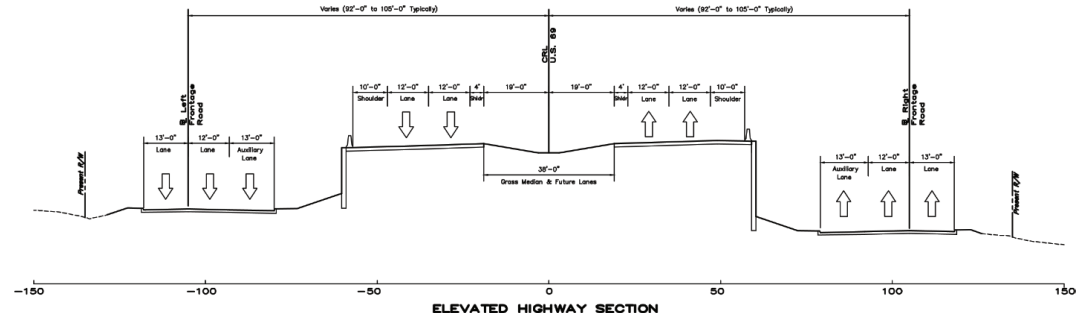


PROPOSED TYPICAL SECTIONS

(Vary based on location)



INFORMATION DIVISION 2

Division Engineer:
Anthony Echelle P.E.



Counties:
Atoka
Bryan
Choctaw
Latimer
Le Flore
McCurtain
Marshall
Pittsburg
Pushmataha

Total Road Miles:
1,657.20

Total Bridges:
866

Totals DO NOT include Toll Roads



www.odot.org/publicmeetings

- GET INVOLVED -

If you have any questions or comments about the Oklahoma Department of Transportation's proposed projects, please visit our new ODOT website at www.odot.org/publicmeetings to fill out an official comment form, send an e-mail to odot-environment@odot.org, or send a letter to:

OKLAHOMA DEPARTMENT OF TRANSPORTATION

Environmental Programs Division, 200 N.E. 21st St., Oklahoma City, OK 73105, Fax. (405) 522-5193

Please provide your comments by November 19, 2015



Welcome to
The Oklahoma
Department of
Transportation Public
Meeting for US-69 in
Pittsburg County, OK

THE OKLAHOMA DEPARTMENT OF TRANSPORTATION

PUBLIC MEETING

November 5th, 2015

6:00 p.m.

Kiamichi Technology Center Auditorium
301 Kiamichi Drive
McAlester, OK 74501

DESCRIPTION

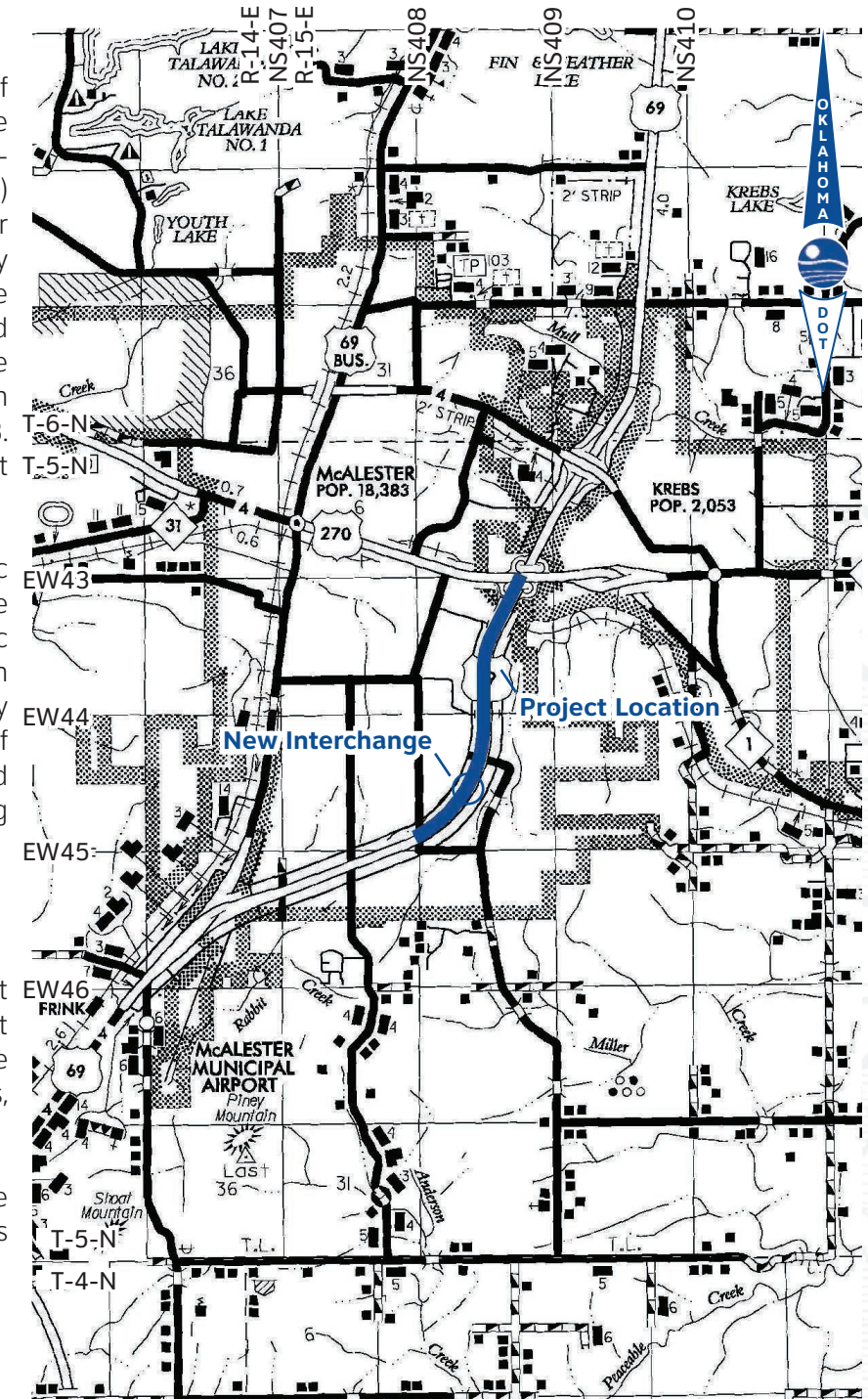
The Oklahoma Department of Transportation (ODOT), in cooperation with the Federal Highway Administration (FHWA) is re-evaluating the Environmental Assessment (EA) for a segment of US-69 in the City of McAlester from the US-270 junction south approximately 2 miles to Fourteenth Street, including the Village Road (Kinkead Road) interchange and adjacent frontage roads. An EA for an 11 mile corridor from the Indian Nation Turnpike north to SH-113 was completed by ODOT in 2003. The EA resulted in a Finding of No Significant Impact (FONSI) from FHWA.

As part of our efforts to keep the public informed of this project and involved in the decision process, ODOT has scheduled a public meeting. The meeting will include a presentation about the proposed improvements and why the improvements are needed, the type of improvements proposed, and the expected impacts to motorists and the surrounding community.

PURPOSE

The purpose of this meeting is to present the proposed design and obtain public input to aid ODOT in moving forward with the completion of the environmental studies, design, and construction.

The purpose of the project is to improve the existing facility to a fully controlled access facility.



- PROJECT INFORMATION -

Current Average Daily Traffic (ADT) in year 2015:

41,500

Vehicles per day

Future Estimated ADT by year 2025:

53,000

Vehicles per day

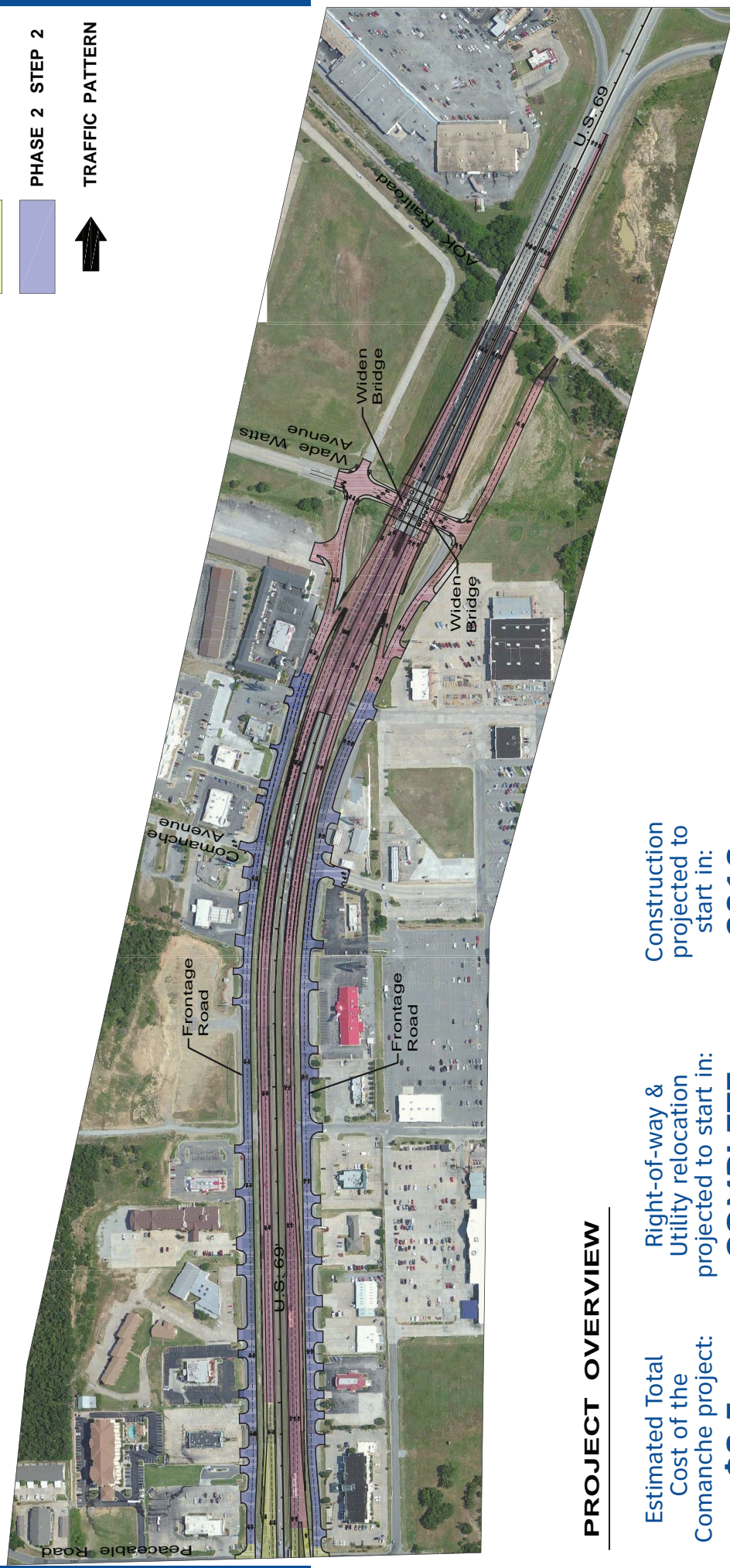
Constructed under traffic:

NO ROAD CLOSURE



CONSTRUCTION PHASING

- PHASE 1 (2016)
- PHASE 2 STEP 1
- PHASE 2 STEP 2
- TRAFFIC PATTERN



PROJECT OVERVIEW

Estimated Total

Cost of the

Comanche project:

\$8.5 Million

Right-of-way & Utility relocation projected to start in:

COMPLETE

Construction projected to start in:

2016

PREPARED BY:

CRAIG & KEITHLINE, INC.

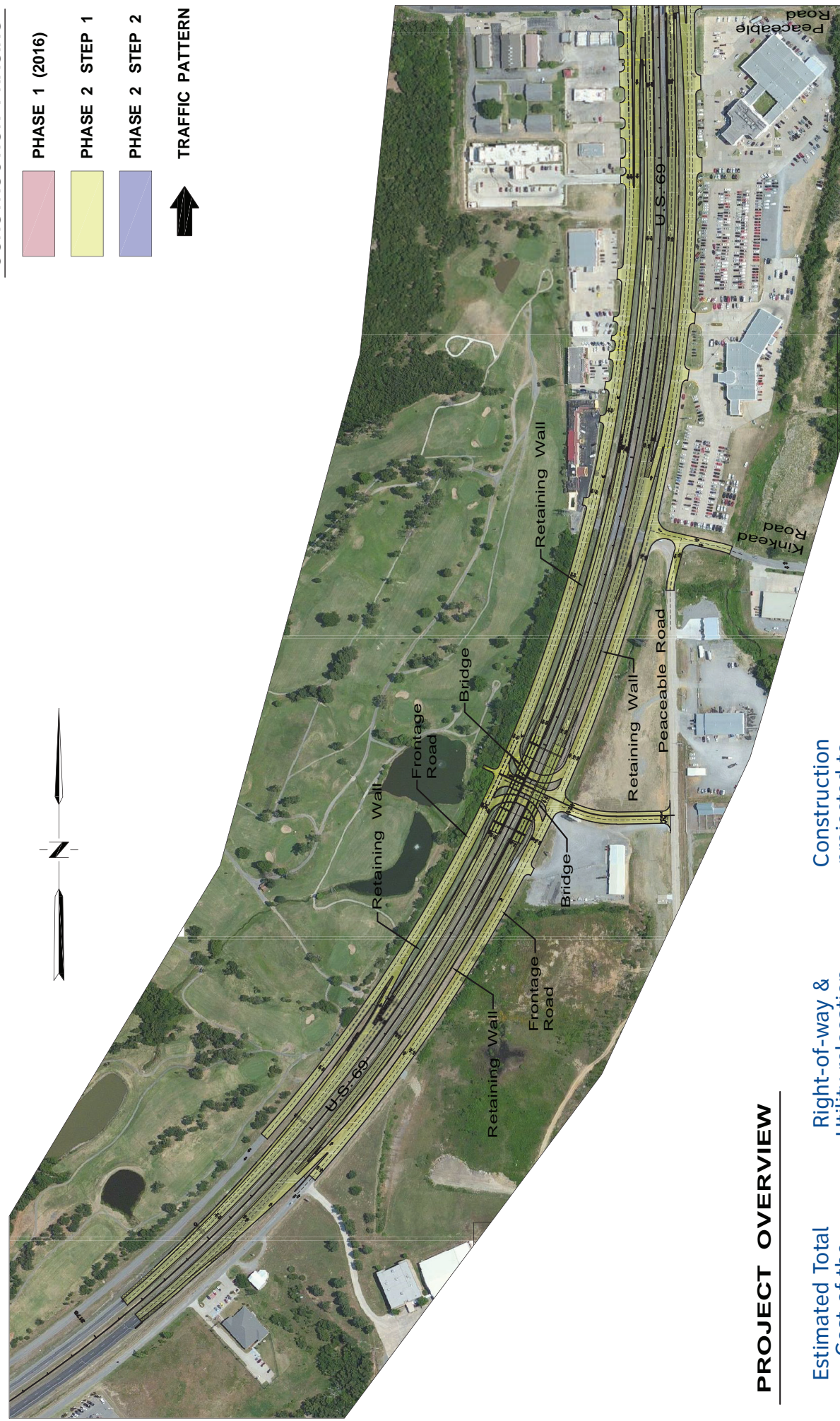


6940 South Utica Avenue
Tulsa, Oklahoma 74136
(918) 743 - 6611



CONSTRUCTION PHASING

- PHASE 1 (2016)
- PHASE 2 STEP 1
- PHASE 2 STEP 2
- TRAFFIC PATTERN



PROJECT OVERVIEW

Estimated Total

Cost of the

Village Road project:

\$17.5 Million

Right-of-way & Utility relocation projected to start in:

2017

Construction projected to start in:

2019