

# US-69 McAlester

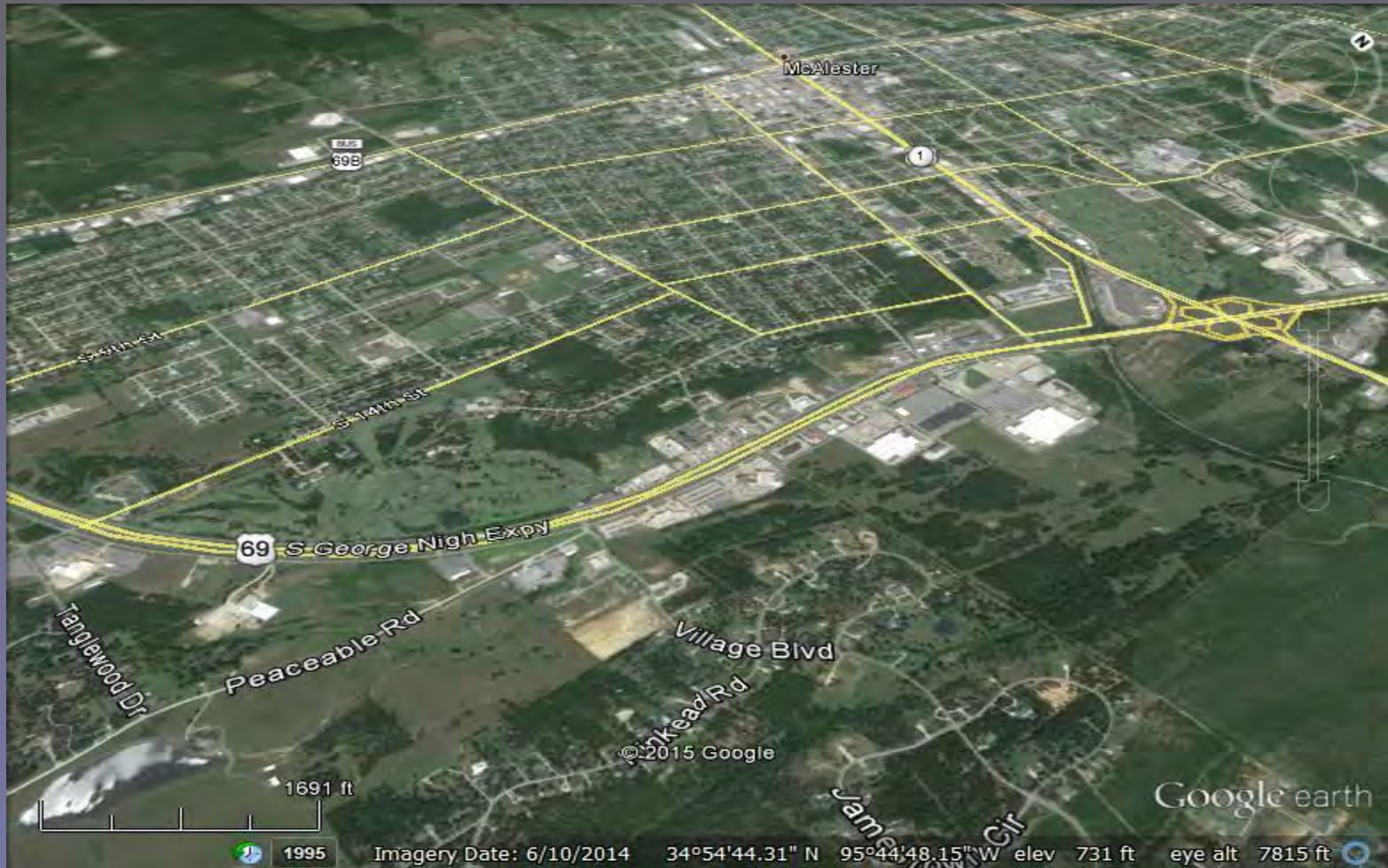
US-69 from the US-270 junction south approximately 2 miles to Fourteenth Street, including the Village Road (Kinkead Road) interchange and adjacent frontage roads.



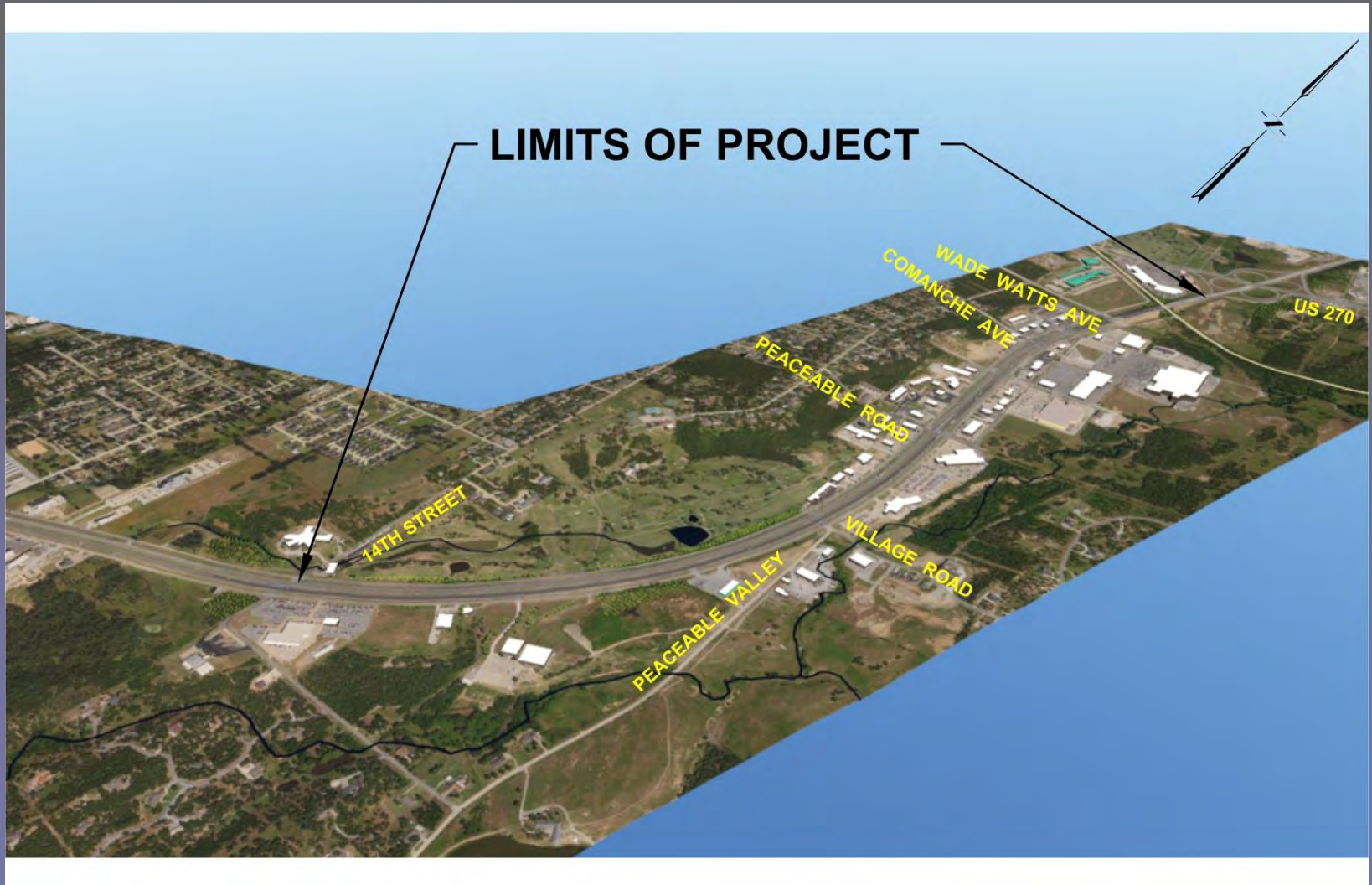
*Anthony Echelle, P.E.*  
*ODOT Division II Engineer*



# Project Area Base Image



# Project Area Overview



# US-69 McAlester

- The purpose of this meeting is to present the proposed design to obtain public input to aid the Department in moving forward with the completion of the environmental studies, design, and construction.
- Project History
  - Current Functional Plans
  - Approved EA with FONSI
- Proposed Changes
  - Reasons Why
  - Proposed Changes
- Construction Phases

# Project History

- 1996 Public Meeting
- 2001 Public Meeting
- 2003 EA/FONSI Approved
- 2004 Functional Plans Approved
- 2008 Right-of-way & Utility Plans (Comanche)
- 2009-to-Present Comanche R/W Acquired & Utilities Relocated
- Due To The Following Factors the Design is Being Re-Evaluated
  - Construction Costs
  - Constructability
  - Changing Traffic Conditions
  - Public Comments and Requests

# Proposed Changes

## ■ Comanche Avenue Project

- Keep the Bridge / Ramps / Frontage Road design north of Comanche
- Eliminate the depressed section of US-69 and the turn-around bridge between Comanche & Peaceable
- Reconstruct US-69 near existing grade

## ■ Village Road (Kinkead) Project

- Extend US-69 / Ramps / Frontage Roads reconstruction almost to Fourteenth Street
- Construct Village Road Interchange (with turnaround lanes) south of the present intersection
- Add another northbound exit ramp

## ■ Frontage Roads

- Convert to one-way as construction phases are completed

# Comanche Project Overview (Previous)



# Keep Bridge / Ramp / Roads as Designed North of Comanche





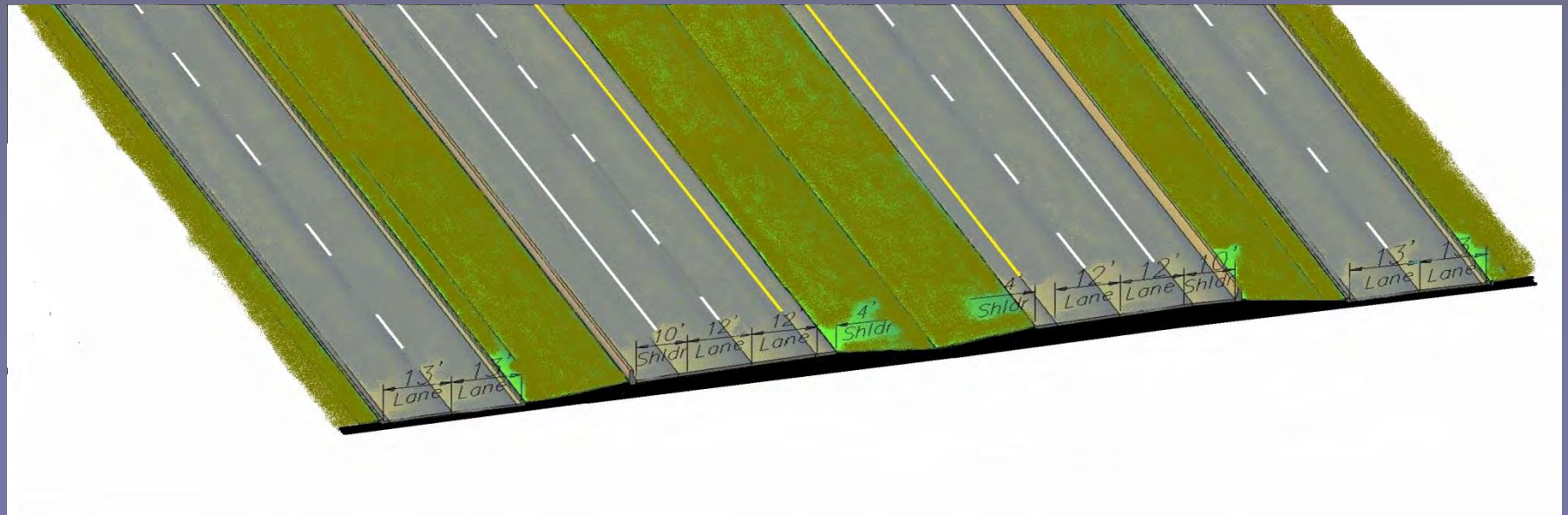
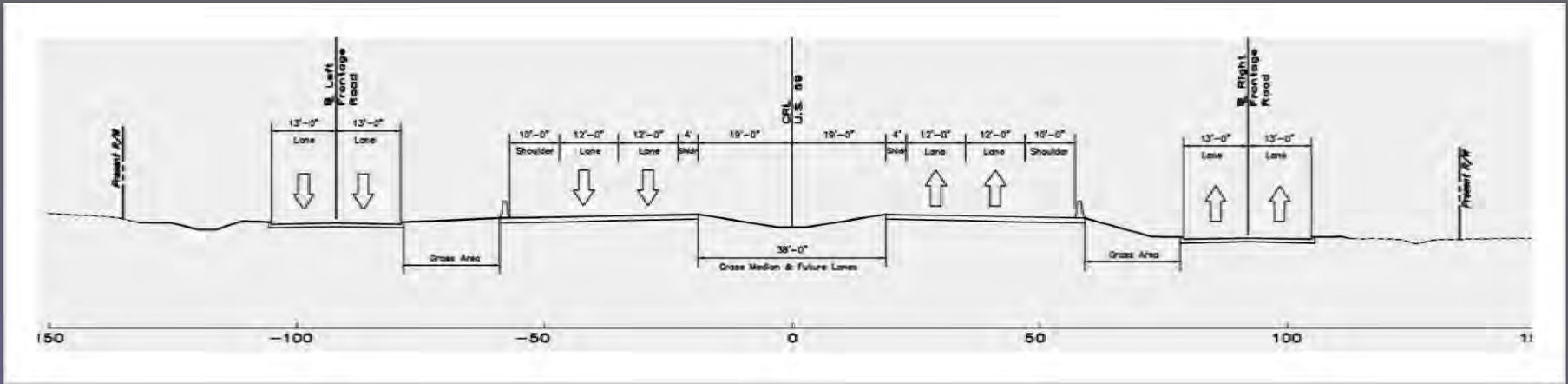
# Eliminate Depressed US-69



# Eliminate the Turnaround Bridge



# Comanche Project Proposed Typical Section



# Comanche Project Overview (New)



# Ramps / Bridges / Roads

## Keep the Design North of Comanche



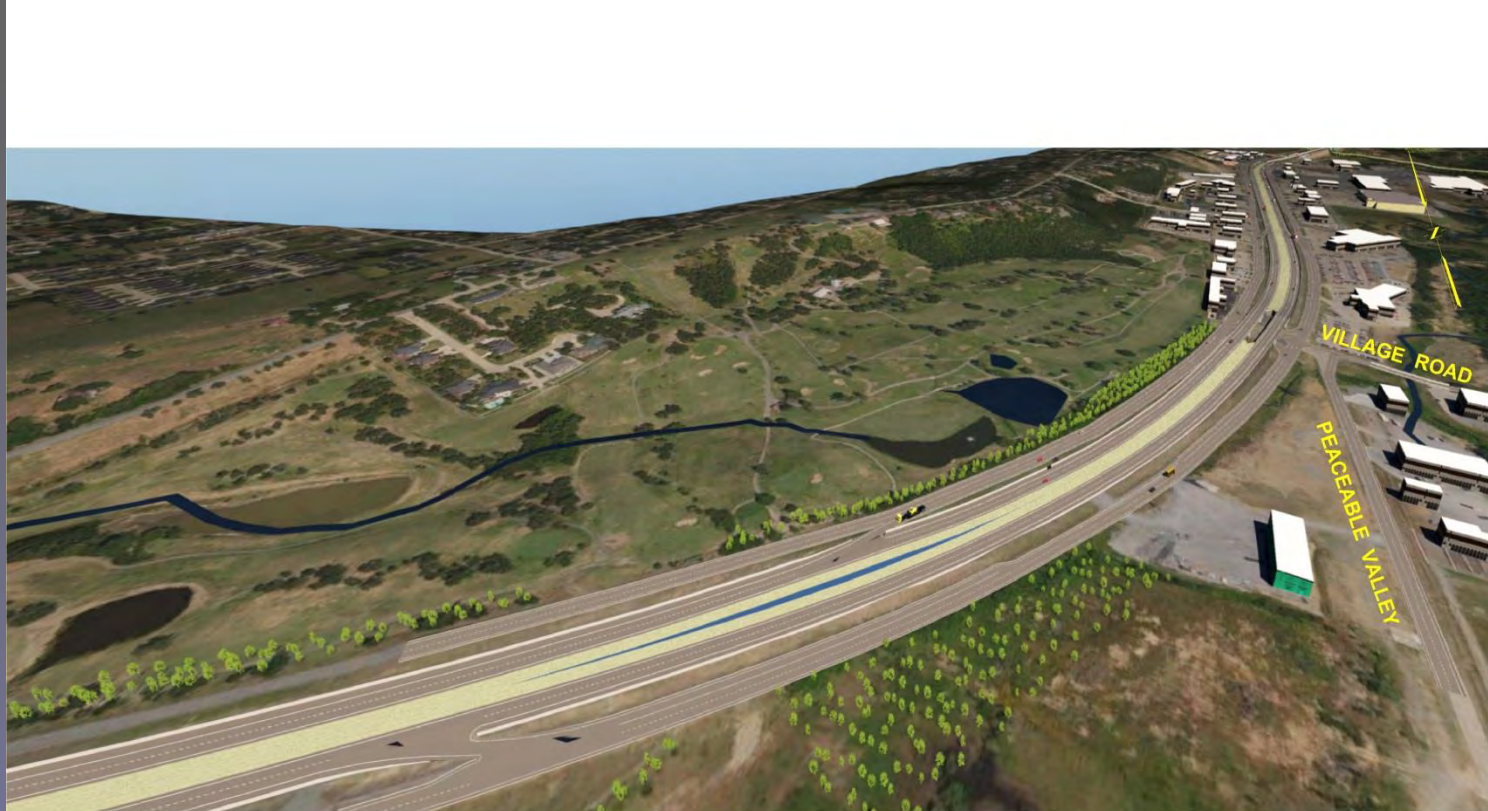
# Comanche Project Overview (New)



# US-69 Peaceable-to-Comanche at end of Phase 1

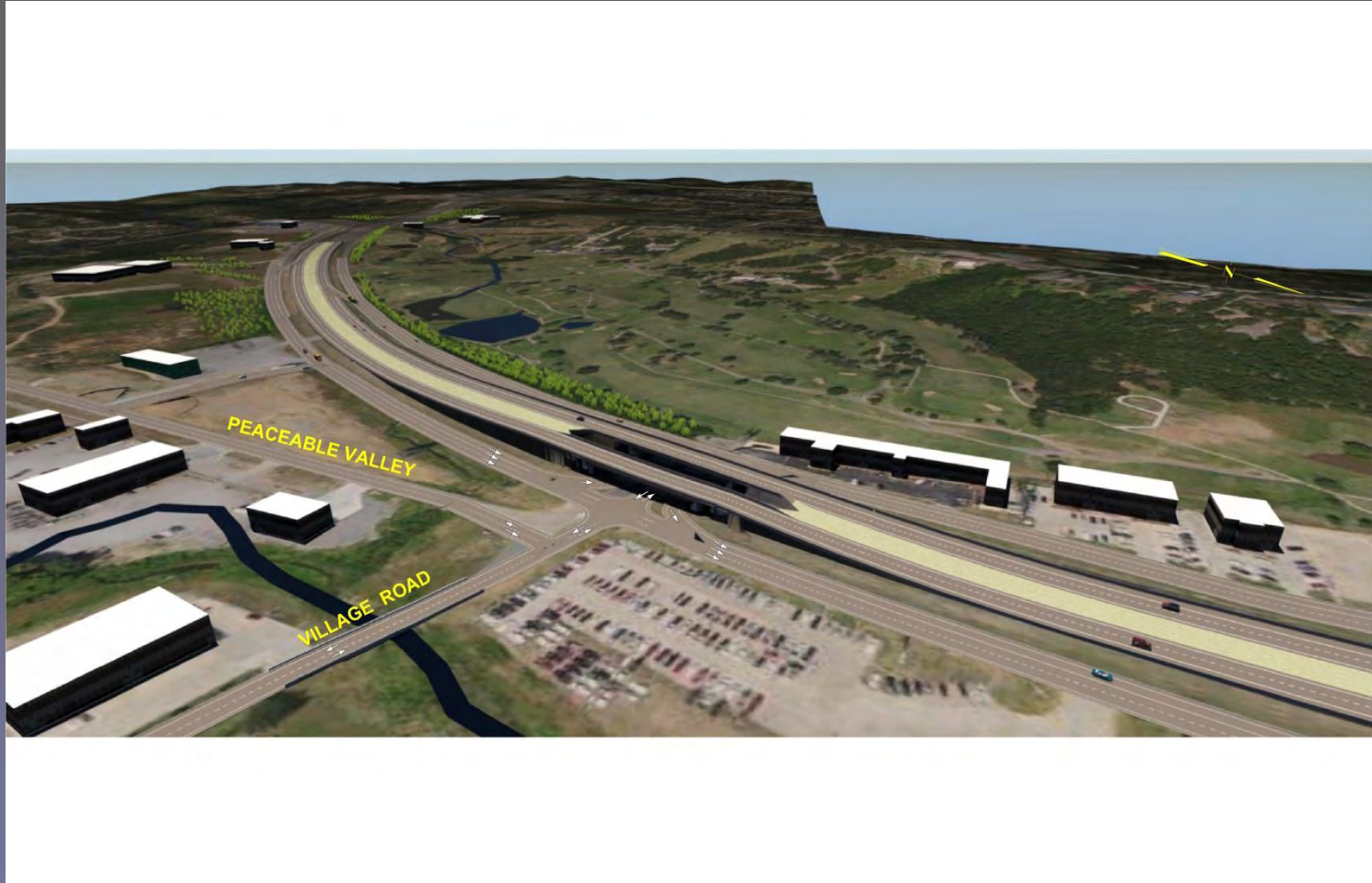


# Village Road (Kinkead) Functional Plan Overview (Previous)

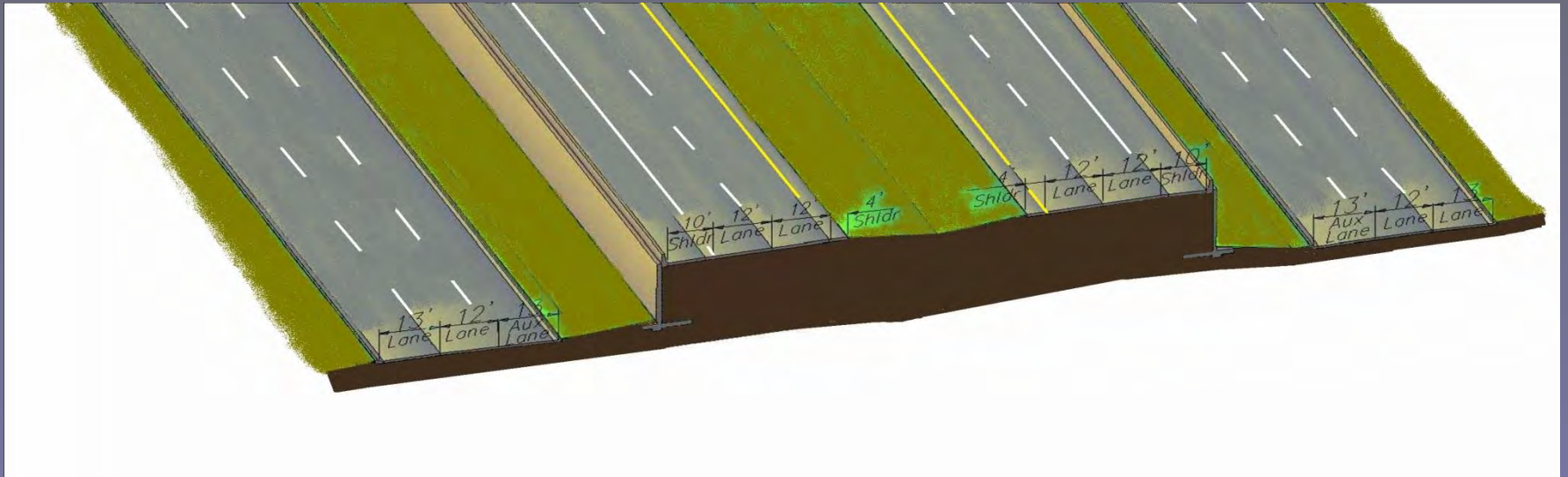
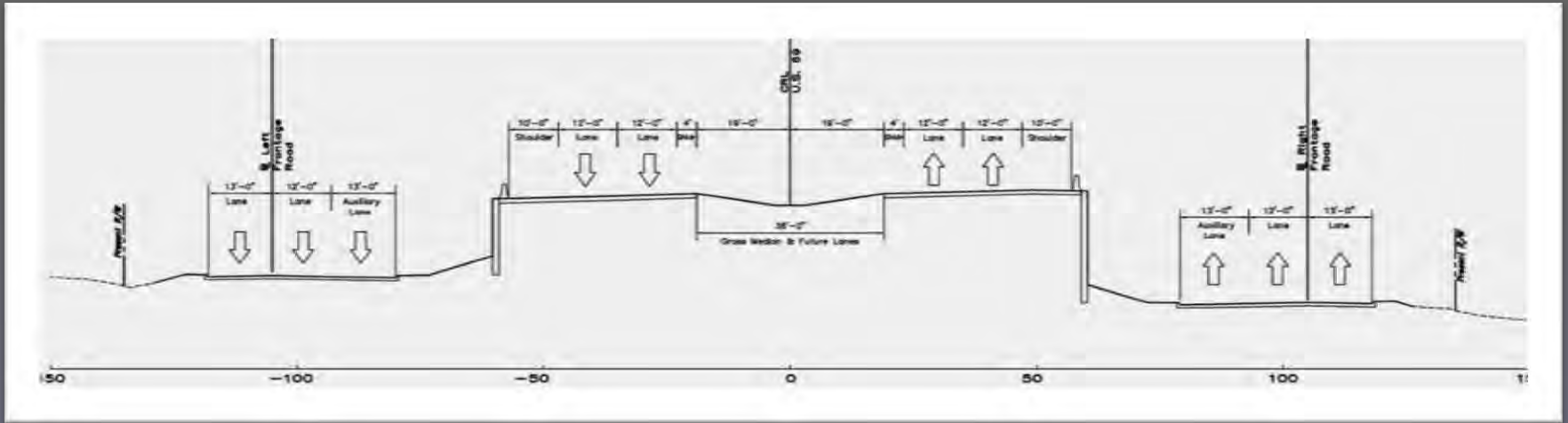




# Village Road (Kinkead) Functional Plan Overview (Previous)



# Village Road Project Proposed Typical Section



# Village Road Project Overview Phase 1 (New)



# Project Extends almost to 14th Street with new ramps



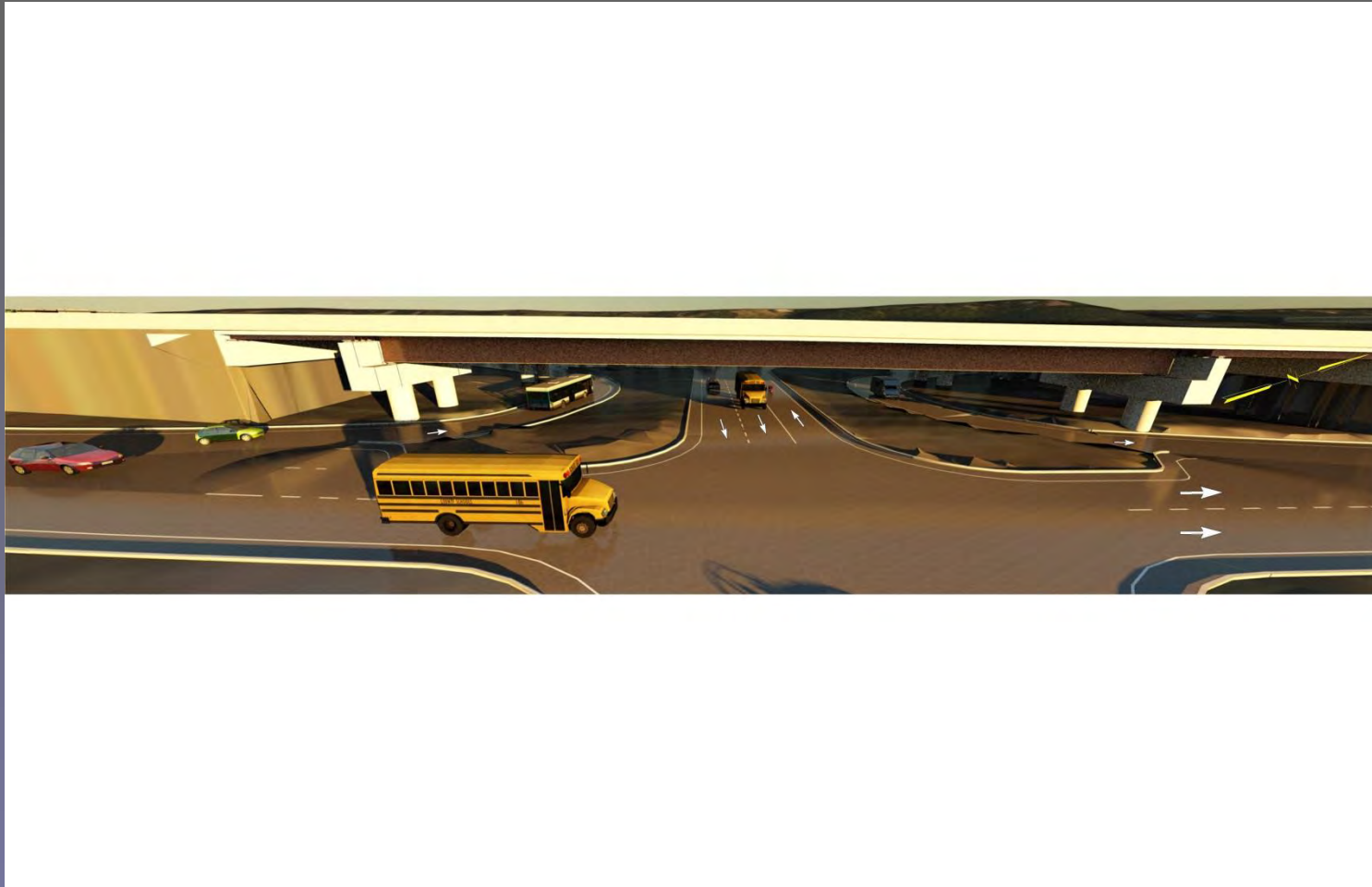
# Village Road Project Overview Phase 1 (New)



# Village Road Interchange South of Present Intersection



# Village Road Project – Interchange Bridge with Turnaround Lanes



# Village Road Project – Interchange Bridge with Turnaround Lanes

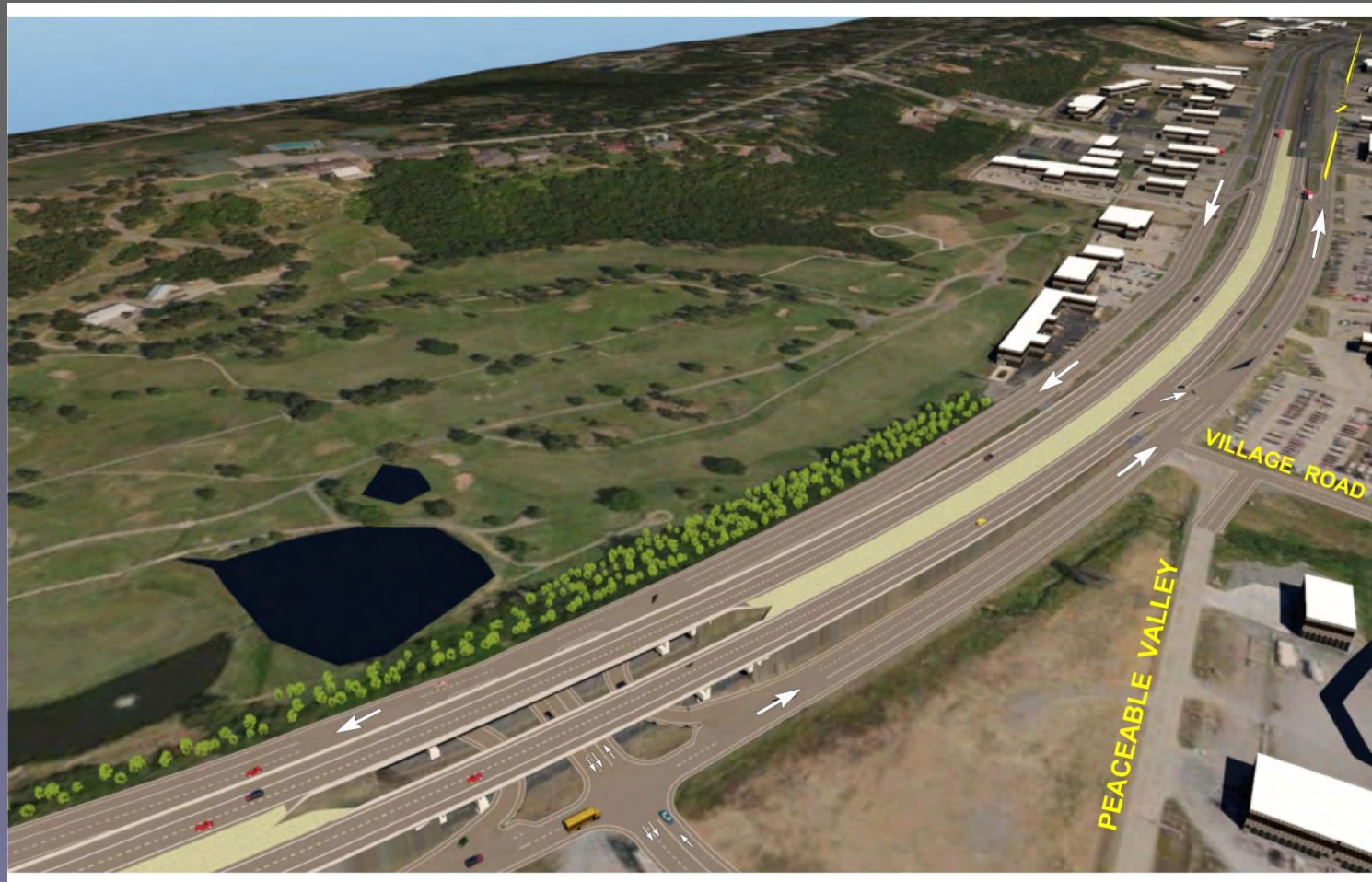




# Village Road Project Overview Phase 1 (New)



# Add 2<sup>nd</sup> Northbound Exit Ramp



# Village Road Project Overview Phase 1 (New)



# Ramps North of Village Road



# Village Road Project Overview Phase 2 (New)



# Finished Project Peaceable to Comanche



# Environmental Studies Update

- Environmental Assessment (EA) & Finding of No Significant Impact (FONSI) issued by FHWA in 2003
- Re-Assessment of existing EA document
  - Public & agency involvement
    - Public meeting
    - Agency solicitations
    - Updated Studies
- Re-Assessment will determine if the findings of the original EA still apply

# Environmental Studies Update

- Updated Studies to be completed for:
  - Relocation impacts
  - Noise impacts
  - Wetland impacts
  - Threatened and endangered species
  - Cultural resources
  - Floodplain impacts
  - Hazardous waste issues
  - Cultural Resources
  - Tribal Concerns



# Environmental Studies Update

- Residential and Commercial Properties
  - Based on final plans
- Parks & Recreational Areas
  - None identified

# Environmental Studies Update

- Noise Study

- A noise study will be completed in accordance

- with ODOT noise policy.

- FHWA Traffic Noise Model to predict existing & future noise levels.
    - FHWA approved sound level meter for field measurements will be conducted to validate the noise model.
    - The majority of the land use adjacent to the project is commercial.
    - The noise study will include those noise sensitive receivers such as homes, apartments, schools, parks, places of worship, etc. nearest the project.

# Environmental Studies Update

- Wetlands and Stream Impacts
  - Section 404 permit with Army Corps of Engineers
- Threatened & Endangered Species
  - American Burying Beetle
  - Northern Long Eared Bat
  - Interior Least Tern
  - Piping Plover
  - Red Knot
  - Sprague's Pit

# Environmental Studies Update

- Floodplain
  - Project will not increase base flood elevation or require flood map revisions.
- Hazardous Waste Study
- Cultural Resources & Archeological Sites
  - Coordinate with State Historic Preservation Office and Oklahoma Archeological Survey
  - No historic properties or archaeological sites affected in original EA
- Tribal Consultation

# Next Steps in Process

- Comanche Project
  - Right-of-Way and Utilities Relocation Complete
  - Public Comment
  - Move Forward with Final Design
  - 2016 Begin Construction

# Next Steps in Process

- Village Road Project
  - Public Comment
  - Update Environmental Studies
  - Move Forward with Design
  - 2017 Right-of-Way and Utilities Relocation
  - 2017 Utilities Relocation Complete
  - 2019 Begin Construction

# US-69 McAlester

## Questions / Comments

- More information is available online at [www.odot.org/publicmeetings](http://www.odot.org/publicmeetings)
- Comments may be provided as follows:
  - Leave your comment form here tonight
  - Download and fill out a form online
  - Mail or fax forms to ODOT at:  
Oklahoma Department of Transportation  
Environmental Programs Division  
200 NE 21<sup>st</sup> Street  
Oklahoma City, OK 73015  
Fax No. (405) 522-5193  
Email comment to : [odot-environment@odot.org](mailto:odot-environment@odot.org)

Comments are due by:  
November 19, 2015