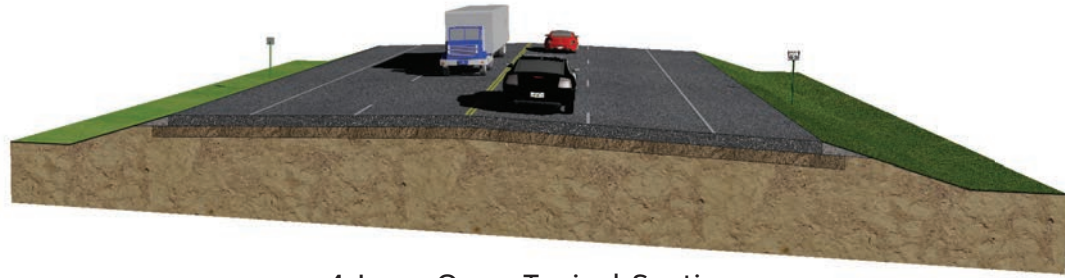


PROPOSED TYPICAL SECTION



4-Lane Open Typical Section
Typical includes: four 12-foot driving lanes; 10-foot paved shoulders

NOTES:

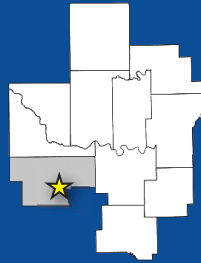
For additional information please contact:

Mr. Geoff Canty
CC Environmental
(405) 761-1225
geoff@ccenviro.net



INFORMATION DIVISION 3

Division Engineer:
Kevin Bloss P.E.



Counties:
Cleveland
Coal
Garvin
Hughes
Johnston
Lincoln
McClain
Okfuskee
Pontotoc
Pottawatomie
Seminole

Total Road Miles:
1,802.11

Total Interstate Miles:
131.97

Total Bridges:
941

Totals DO NOT include Toll Roads

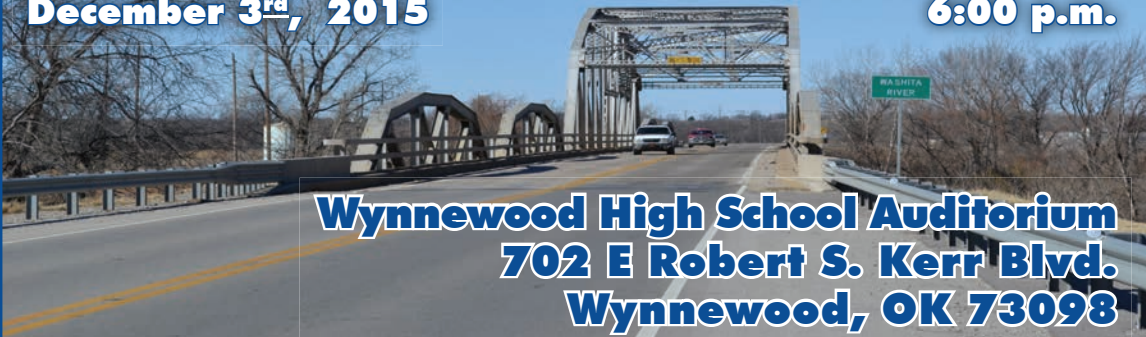


www.odot.org/publicmeetings



Welcome to
The Oklahoma
Department of
Transportation Public
Meeting for US-77 in
Garvin County, OK

THE OKLAHOMA DEPARTMENT OF TRANSPORTATION PUBLIC MEETING December 3rd, 2015 6:00 p.m.



DESCRIPTION

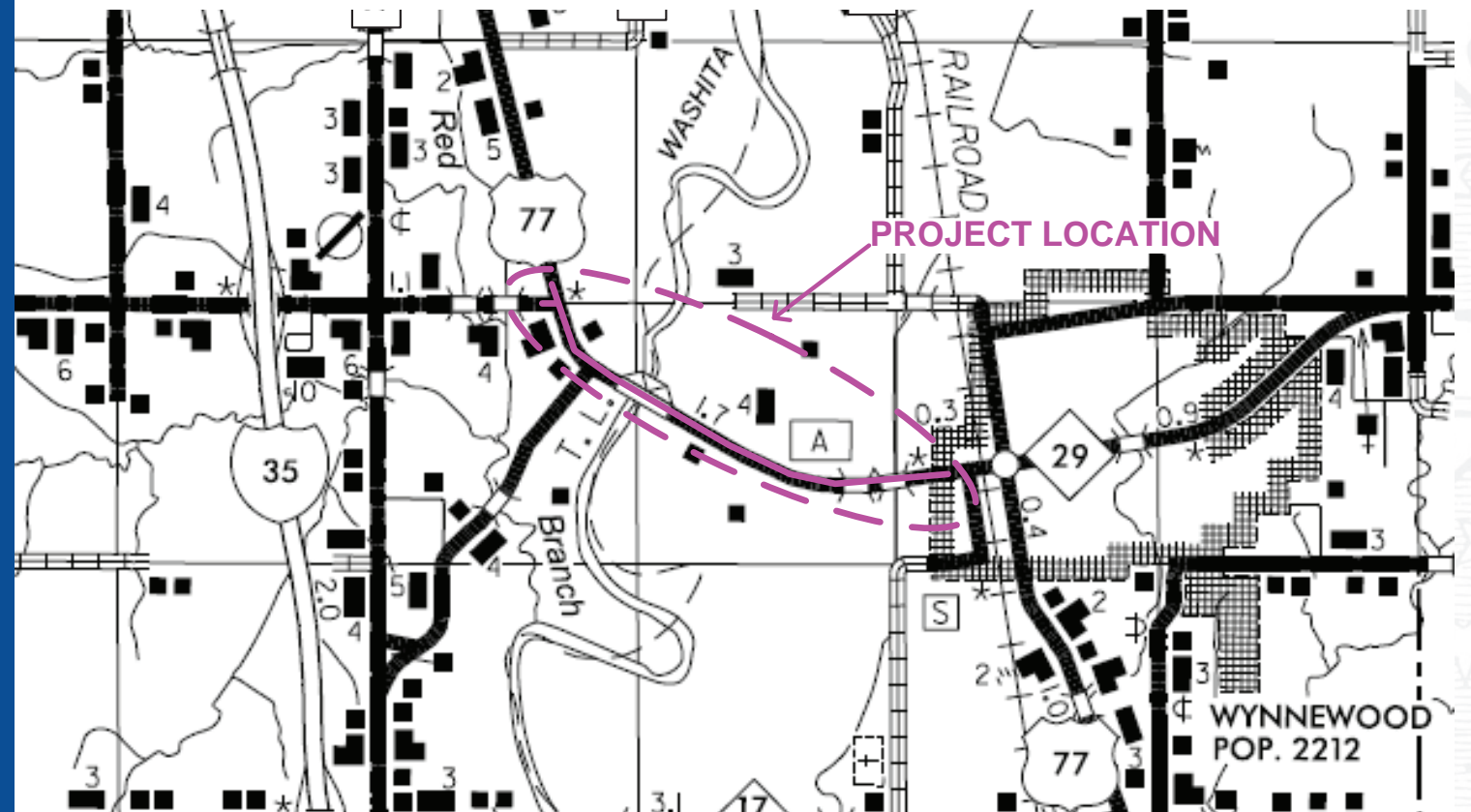
The Oklahoma Department of Transportation (ODOT) in cooperation with the Federal Highway Administration (FHWA) is proposing to improve highway US 77 between SH-29 West junction and Long Avenue in Wynnewood in Garvin County, Oklahoma. There are three narrow 28-30 ft wide bridges over Washita River, Washita River overflow and unnamed creek located in this section. The existing highway is a two-lane facility with two, 12-ft wide driving lanes and 8-ft wide paved shoulders. The current and projected traffic on the highway warrants four lanes.

As part of our efforts to keep the public informed and involved in the decision-making process, ODOT has scheduled a public meeting.

PURPOSE

The purpose of this meeting is to present the proposed improvements and the results of the environmental studies, inform the public of the road closure during construction, and to solicit public input before completing the design.

The purpose of the project is to correct the structurally deficient/functionally obsolete narrow bridges on US-77 and to improve the efficiency of the highway.



- GET INVOLVED -

If you have any questions or comments about the Oklahoma Department of Transportation's proposed projects, please visit our new ODOT website at www.odot.org/publicmeetings to fill out an official comment form, send an e-mail to odot-environment@odot.org, or send a letter to:

OKLAHOMA DEPARTMENT OF TRANSPORTATION

Environmental Programs Division, 200 N.E. 21st St., Oklahoma City, OK 73105, Fax. (405) 522-5193

Please provide your comments by December 17, 2015

WASHITA RIVER BRIDGE PROJECT INFORMATION

Estimated Total Cost of this project:
\$9.13
 Million

Right-of-way & Utility relocation:
IN PROGRESS

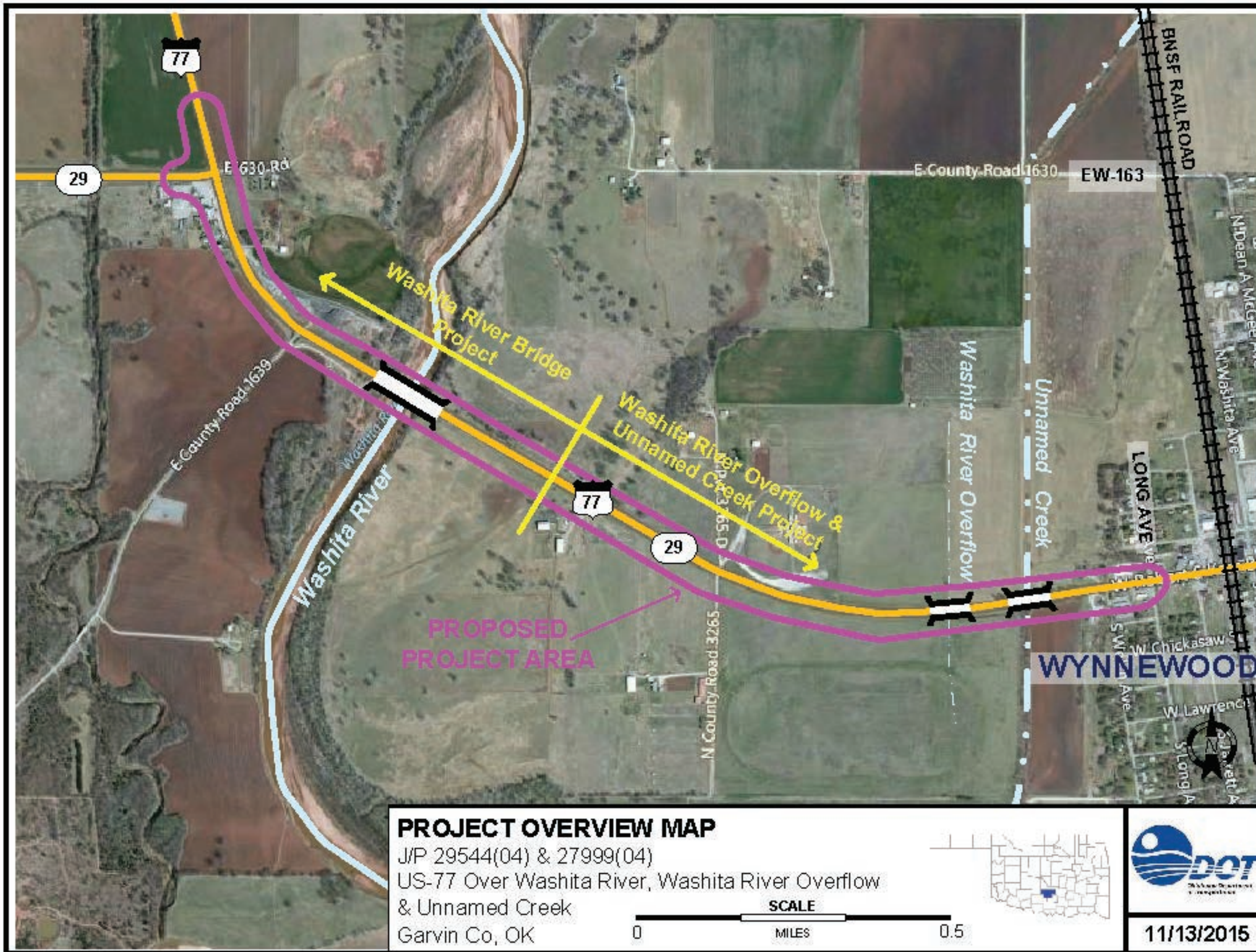
Construction projected to start in:
2018

Current Average Daily Traffic (ADT) for project area in year 2015:
6,900
 Vehicles a day

Future Estimated ADT for project area by year 2035:
9,600
 Vehicles a day

WILL REQUIRE ROAD CLOSURE AND DETOUR

Road Closure Duration:
 300 Days



WASHITA RIVER OVERFLOW & UNNAMED CREEK PROJECT INFORMATION

Estimated Total Cost of this project:

\$6.27
 Million

Right-of-way & Utility relocation projected to start in:
2017

Construction projected to start in:
2020

Current Average Daily Traffic (ADT) for project area in year 2015:
6,900
 Vehicles a day

Future Estimated ADT for project area by year 2035:
9,600
 Vehicles a day

NO ANTICIPATED ROAD CLOSURE

