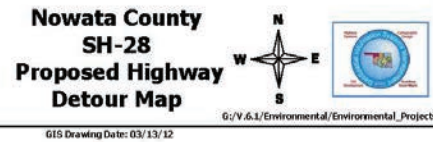


# PROPOSED DETOUR



**Detour Route**  
 JP # 24252(04), NBI # 15206  
 Detour Distance : Approx. 24.00 mi  
 SH -28 Bridge over Verdigris River.  
 (Located 1.0 Mile East of US-169)



NOTES:

---



---



---



---



---



---



---



---



---



---

For additional information please contact:  
**David Saulsberry**  
 ODOT Environmental Project Manager  
 (405) 521-2315  
 odot-environment@odot.org



# DIVISION 8

Division Engineer:  
 Randle White P.E.



- Counties:  
 Craig  
 Creek  
 Delaware  
 Mayes  
 Nowata  
 Osage  
 Ottawa  
 Pawnee  
 Rogers  
 Tulsa  
 Washington

**Total Road Miles:**  
 1,664.63

**Total Interstate Miles:**  
 39.56

**Total Bridges:**  
 1,117

Totals DO NOT include Toll Roads



[www.odot.org/publicmeetings](http://www.odot.org/publicmeetings)



# THE OKLAHOMA DEPARTMENT OF TRANSPORTATION PUBLIC MEETING

March 3<sup>rd</sup>, 2016 6:00 p.m.



**Nowata City/County Library**  
**224 S. Pine Street**  
**West Room**  
**Nowata, Oklahoma 74048**

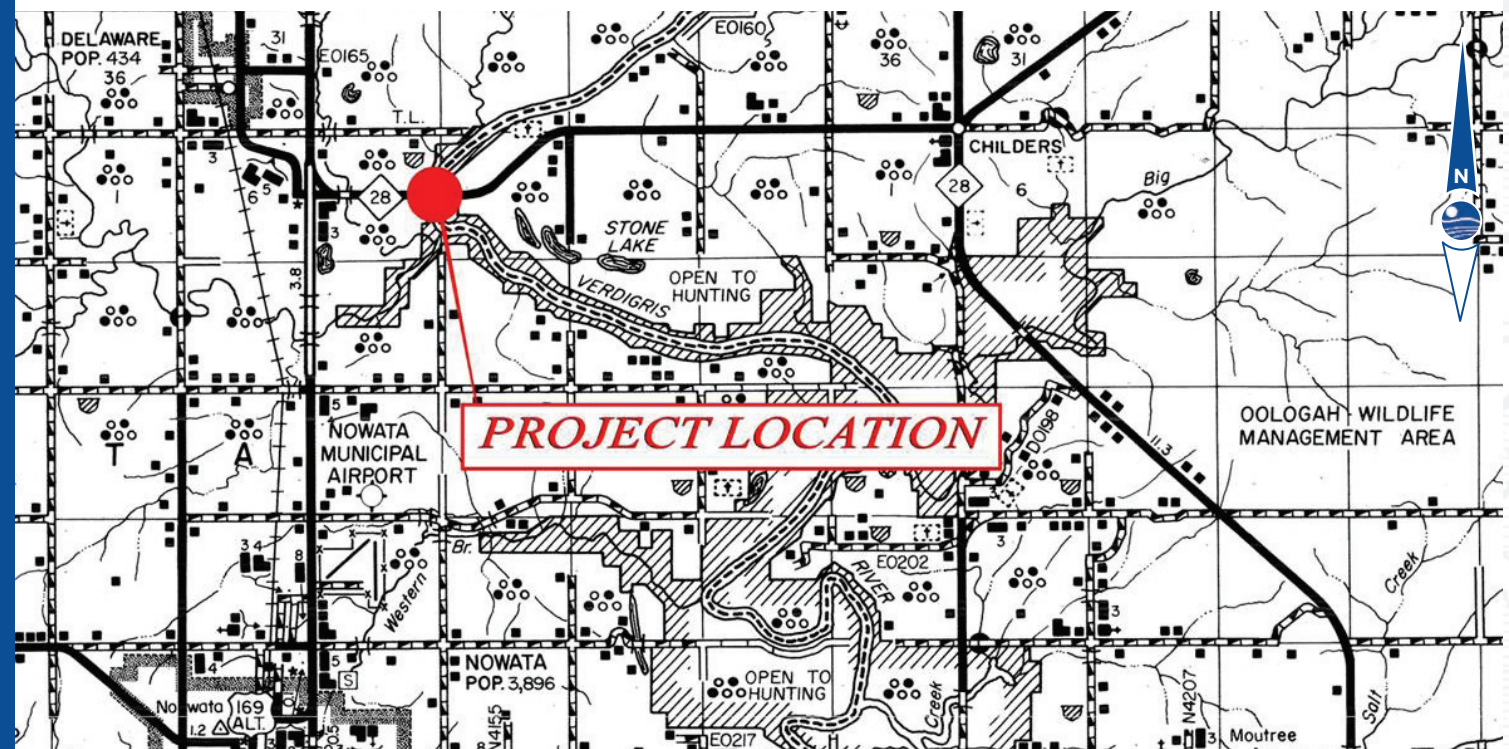
## DESCRIPTION

The Oklahoma Department of Transportation (ODOT), is considering improvements to the bridge and approaches on SH-28 over Verdigris River approximately one mile east of US-169, north of Nowata in Nowata County.

The project is currently scheduled to be let for construction in Federal Fiscal Year 2020 and will necessitate closure of the bridge and the approach roadway on State Highway 28. It is anticipated that the road closure will last approximately 270 days, with incentives and disincentives to reduce the closure time. We are considering using the following as a state highway detour during the bridge closure: Eastbound - From Junction of US-169 and SH-28, proceed south on US-169 to Junction US-169/US-60, then east on US-60 to Junction US-60/SH-28 and then north and west on SH-28 (approximately 24 miles maximum) - see map on back. Once the project is let for construction, information on actual date of closure and duration of closure can be obtained from the ODOT Field Division at (918) 838-9933.

## PURPOSE

The purpose of this meeting is to inform the public and solicit comments about the Department's proposed bridge closure.



## - GET INVOLVED -

If you have any questions or comments about the Oklahoma Department of Transportation's proposed projects, please visit our website at [www.odot.org/publicmeetings](http://www.odot.org/publicmeetings) to fill out an official comment form, send an e-mail to [odot-environment@odot.org](mailto:odot-environment@odot.org), or send a letter to:

**OKLAHOMA DEPARTMENT OF TRANSPORTATION**

Environmental Programs Division, 200 N.E. 21st St., Oklahoma City, OK 73105, Fax. (405) 522-5193

**Comments due by March 17, 2016**



# PROJECT INFORMATION

Programmed Construction Cost:

**\$5.1 Million**

Construction programmed to start in:

**2020**

Current Annual Average Daily Traffic (AADT) in year 2016:

**1000 Vehicles per day**

Future Estimated AADT by year 2036:

**1,400 Vehicles per day**

Construction along existing alignment would require a temporary construction road closure

