



123

Map Legend

- Pathfinder Parkway Trail
- City Owned Property
- Park Boundary

0 150 300 600 Feet

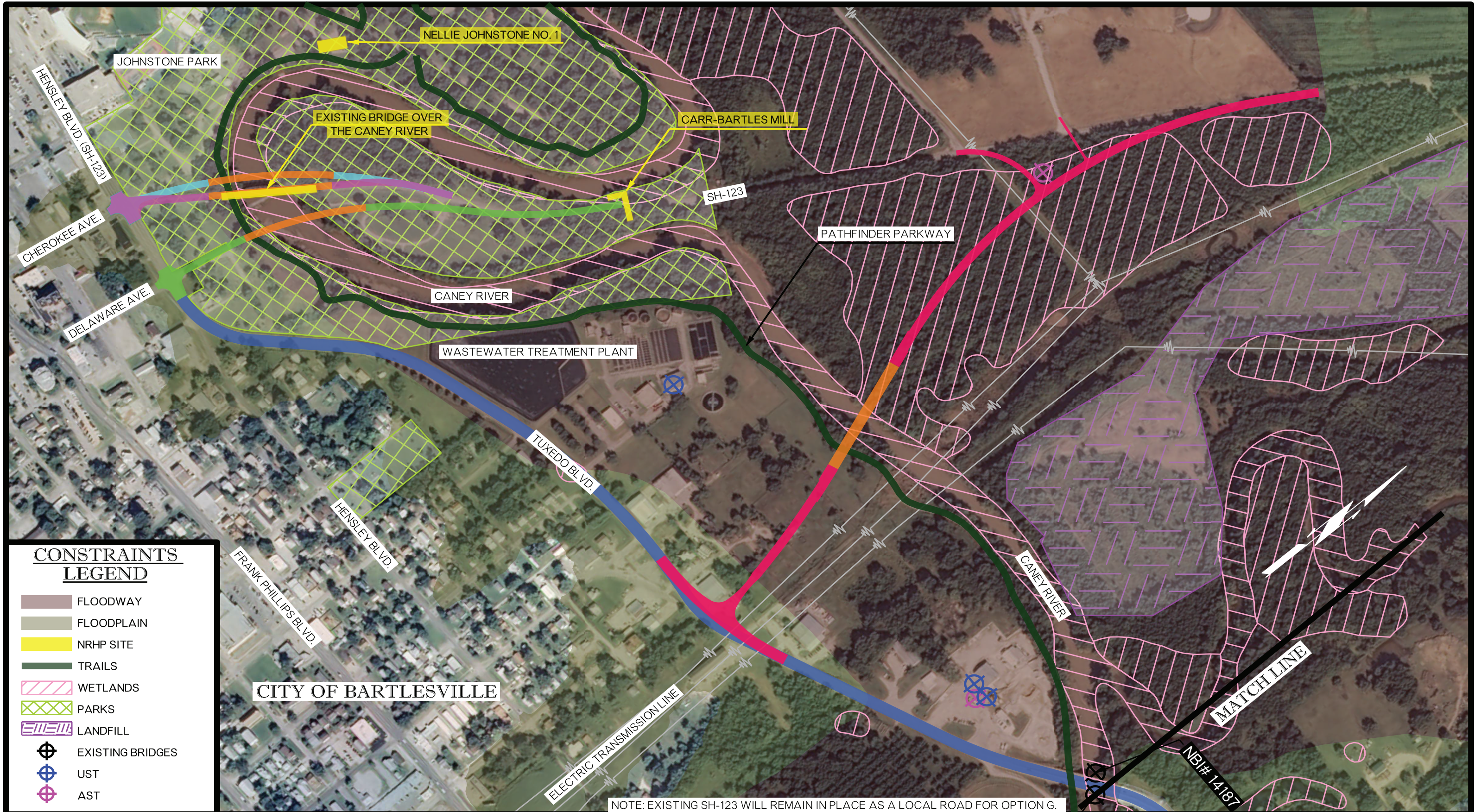
Items labeled in Yellow are NRHP Eligible



Resources Map
Washington County - SH-123
Job No. 24348(10)

SH-123 over Caney River, 1.68 miles North of SH-123/US-60 Jct.

Updated: April 8, 2016



**CONSTRAINTS
LEGEND**

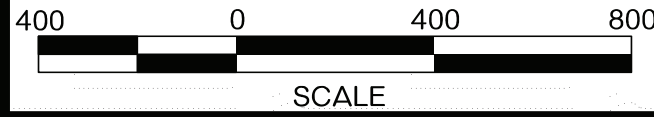
- FLOODWAY
- FLOODPLAIN
- NRHP SITE
- TRAILS
- WETLANDS
- PARKS
- LANDFILL
- ⊕ EXISTING BRIDGES
- ⊕ UST
- ⊕ AST

CITY OF BARTLESVILLE

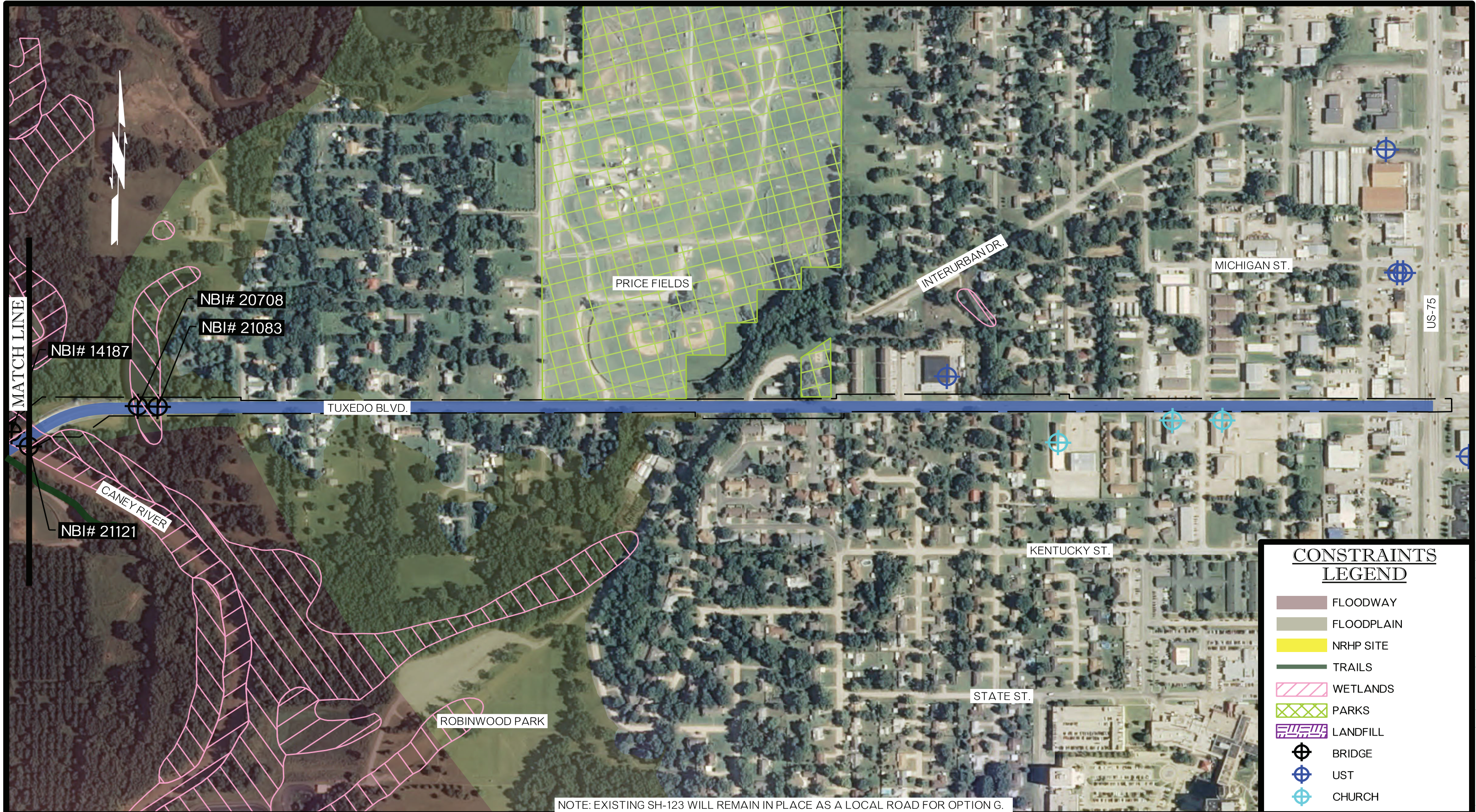
NOTE: EXISTING SH-123 WILL REMAIN IN PLACE AS A LOCAL ROAD FOR OPTION G.

PROPOSED OPTIONS LEGEND

- PROPOSED BRIDGE
- OPTION C, D, & E
- OPTION G
- OPTION A & B
- OPTION F
- OPTION W



**SH-123 OVER THE CANEY RIVER
WASHINGTON COUNTY - JP 24348(10)**



MATCH LINE

NBI# 14187
 NBI# 20708
 NBI# 21083

PRICE FIELDS

INTERURBANDR.

MICHIGAN ST.

US-75

TUXEDO BLVD.

CANEY RIVER
 NBI# 21121

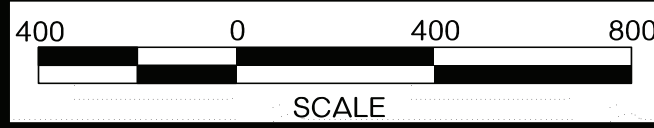
KENTUCKY ST.

ROBINWOOD PARK

STATE ST.

NOTE: EXISTING SH-123 WILL REMAIN IN PLACE AS A LOCAL ROAD FOR OPTION G.

CONSTRAINTS LEGEND	
	FLOODWAY
	FLOODPLAIN
	NRHP SITE
	TRAILS
	WETLANDS
	PARKS
	LANDFILL
	BRIDGE
	UST
	CHURCH



PROPOSED OPTIONS LEGEND			
	PROPOSED BRIDGE		OPTION C, D, & E
	OPTION A & B		OPTION F
	OPTION G		OPTION W

**SH-123 OVER THE CANEY RIVER
 WASHINGTON COUNTY - JP 24348(10)**