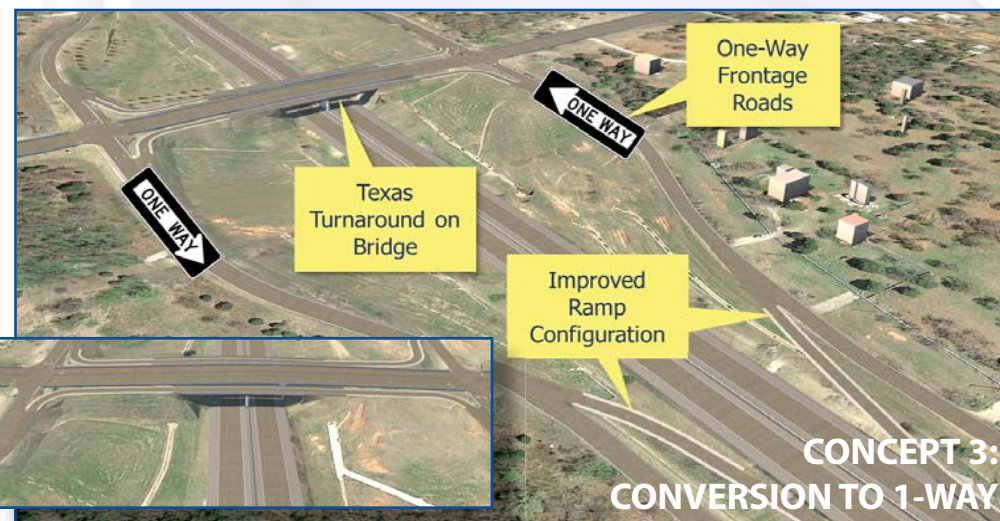
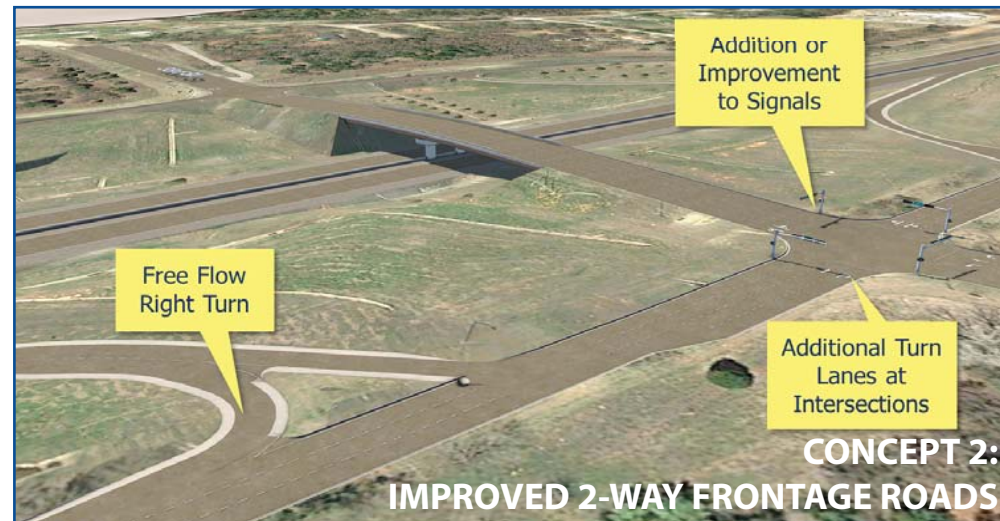


CONCEPTS



STUDY TIMELINE

Frontage Road Engineering Report: **Late 2017**

*Totals **DO NOT** include Toll Roads

DIVISION 4 ENGINEER: BRIAN TAYLOR, P.E.

*Totals **DO NOT** include Toll Roads

***Total Road Miles:**
1,419.66

***Total Interstate Miles:**
222.47

***Total Bridges:**
1,144

Counties: Canadian, Garfield, Grant, Kay, Kingfisher, Logan, Noble, Oklahoma, Payne



PLEASE PROVIDE YOUR COMMENTS BY November 9, 2017

For more information about the study

David Streb, Poe & Associates • (405) 949-1962 • david.streb@poeandassociates.com
Kirsten McCullough, Garver • (918) 250-5922 • KJMcCullough@GarverUSA.com

Questions? Comments?

If you have questions or comments about the Oklahoma Department of Transportation's proposed study, please contact Oklahoma Department of Transportation, Environmental Programs Division, 200 N.E. 21st Street, Oklahoma City, OK 73105 or send an email with questions to environment@odot.org.



I-35 Frontage Roads from Memorial Road to 2nd Street • Edmond, OK Public Meeting

Purpose of Meeting

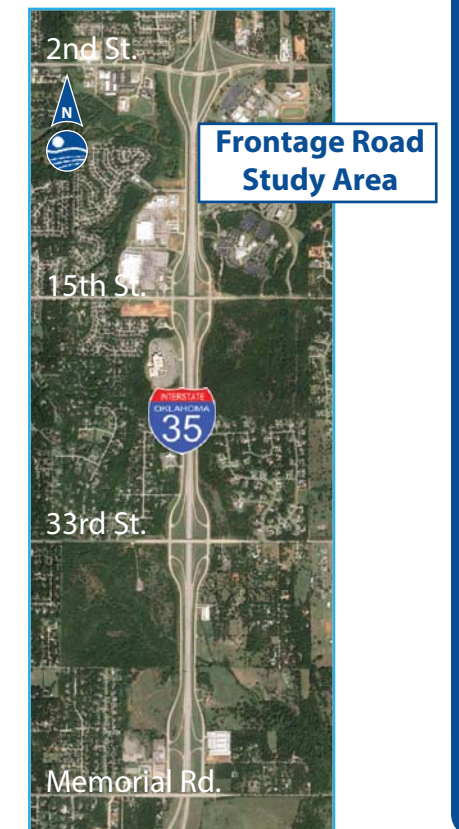
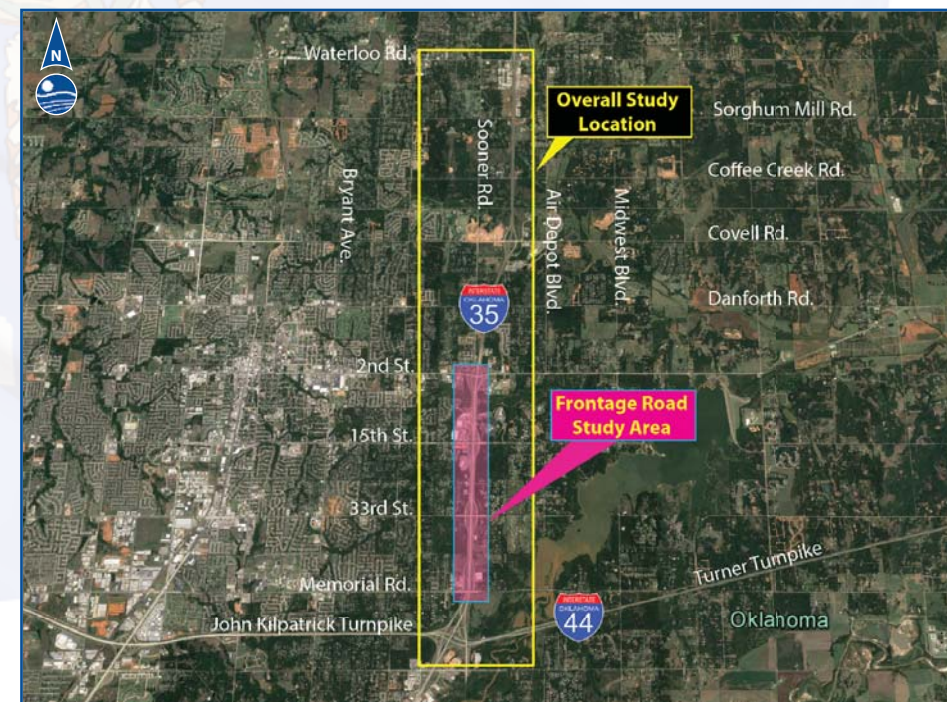
The purpose of the meeting is to inform the public and obtain input on the frontage road concepts under consideration for the I-35 corridor from Memorial Road north to 2nd Street through Edmond, Oklahoma. This meeting will focus on this portion of the overall study, which includes I-35 from the John Kilpatrick Turnpike north to Waterloo Road.

Purpose of Study

The purpose of the study is to determine the safety and traffic needs of the I-35 mainline, interchanges, and frontage roads from the John Kilpatrick Turnpike north to Waterloo Road; and to evaluate the potential solutions.

Overall Study Description

The purpose of the study is to evaluate the existing functionality and configuration of I-35 from I-44 / Kilpatrick Turnpike to Waterloo Road including mainline capacity, interchanges and frontage roads in Edmond, Oklahoma. The study will evaluate the frontage road concepts, including improved existing two-way frontage roads and conversion to one-way frontage roads south of 2nd Street, as well as new frontage roads north of 2nd Street. The study will also identify safety and capacity needs for the I-35 mainline and consider improvements to interchange ramps. The study will result in concept designs of the selected alternatives with an analysis of the vertical and horizontal alignments, and estimates of right of way if necessary. **This meeting will focus on frontage roads in their current configuration with projected traffic, improved existing two-way frontage roads and conversion to one-way frontage roads.**



I-35 Frontage Roads from Memorial Road to 2nd Street Edmond, Oklahoma

