



PUBLIC OPEN HOUSE

US-62

**WIDEN, RESURFACE & BRIDGE REPLACEMENT
THROUGH BRIGGS, OK**

JUNE 1ST, 2017

BRIGGS ELEMENTARY SCHOOL, 5:00 PM-7:00 PM



AGUIRRE & FIELDS LP
ENGINEERS AND PLANNERS



Environmental



PURPOSE

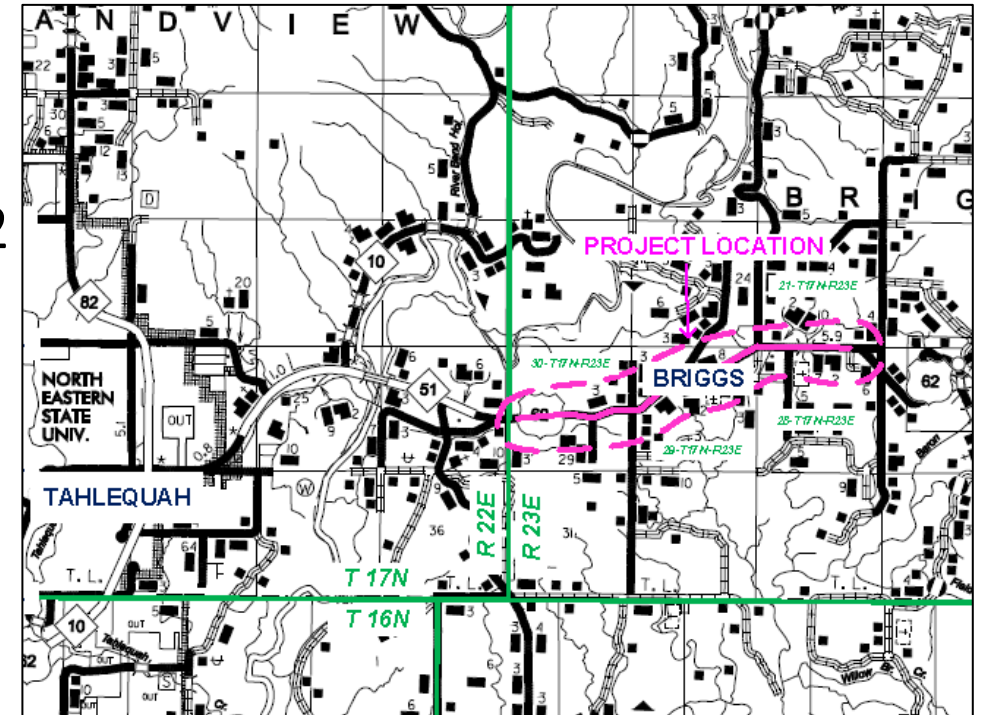
Meeting Purpose:

Inform the public about the proposed improvements to approximately 2.6 miles of US-62 through Briggs, OK.

- Objectives:
 - Discuss the need for the project
 - Present the proposed improvements
 - Solicit public input and comments

Project Purpose:

To improve safety along this segment of US-62.



EXISTING ROADWAY

- Two, 12-foot driving lanes
- Posted 55 MPH
- No shoulders
- Steep side slopes
- Inadequate cross-slopes
- Skewed intersections with poor sight distances
- Poor bridge box condition
- High accident rate





ACCIDENT DATA

Current traffic (2016): 3,978 vehicles/day

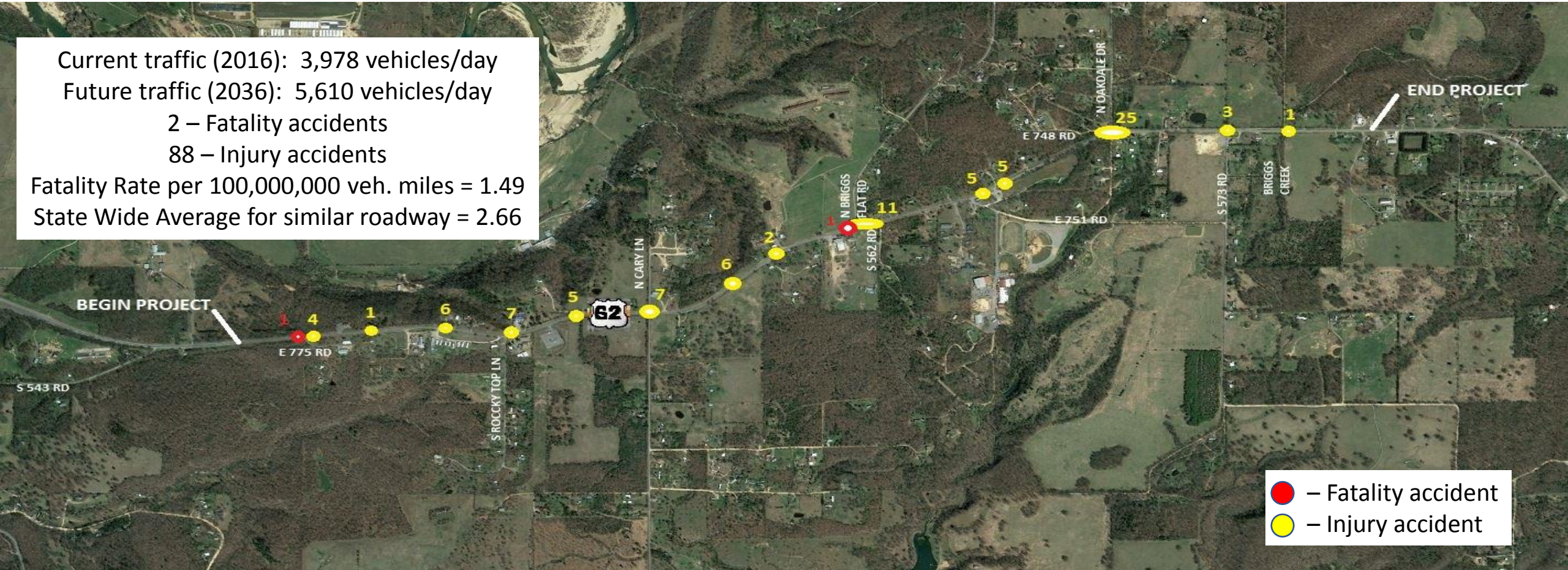
Future traffic (2036): 5,610 vehicles/day

2 – Fatality accidents

88 – Injury accidents

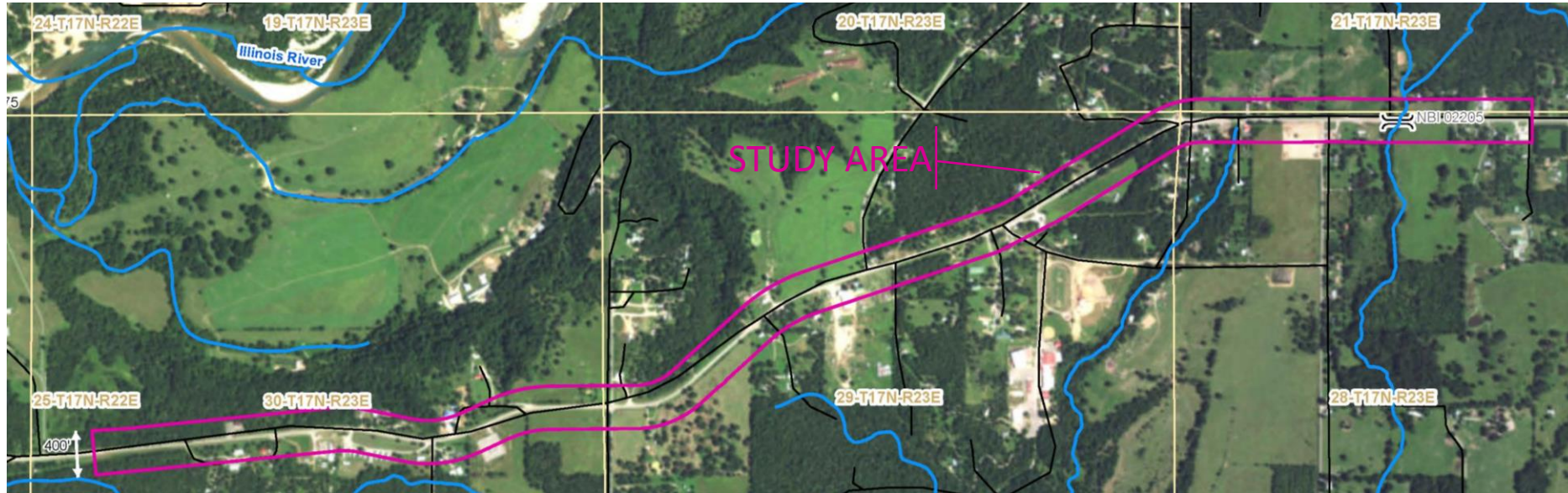
Fatality Rate per 100,000,000 veh. miles = 1.49

State Wide Average for similar roadway = 2.66



● – Fatality accident
 ● – Injury accident

PROJECT SCOPE



- Improve safety along this segment of US-62
- Improve roadway design to meet new standards
- Minimize right-of-way & environmental impacts
- Replace the East Branch Briggs Creek box-bridge



ENVIRONMENTAL REVIEW

PROCESS – Study & Assess:

- Relocations & Right-of-Way Concerns
- Cultural Resources Issues
- Tribal Interests
- Community Facilities
- Hazardous Waste Sites
- Noise Impacts
- Wetlands & Stream Impacts
- Endangered Species
- Floodplains
- Parks & Recreational Areas
- Farmlands





ENVIRONMENTAL REVIEW

Relocations & Right-of-Way

- A mix of impacts to homes & businesses

Cultural Resources Concerns

- Sequoyah Indian Weavers building

Community Facilities

- Cobb Family Cemetery
- Free Holiness Church
- Cedar Tree Baptist Church
- Cherokee Baptist Association campground

Hazardous Waste Sites

- Two underground storage sites
- Salvage yard

Wetland Impacts

- Minimal

Stream Impacts

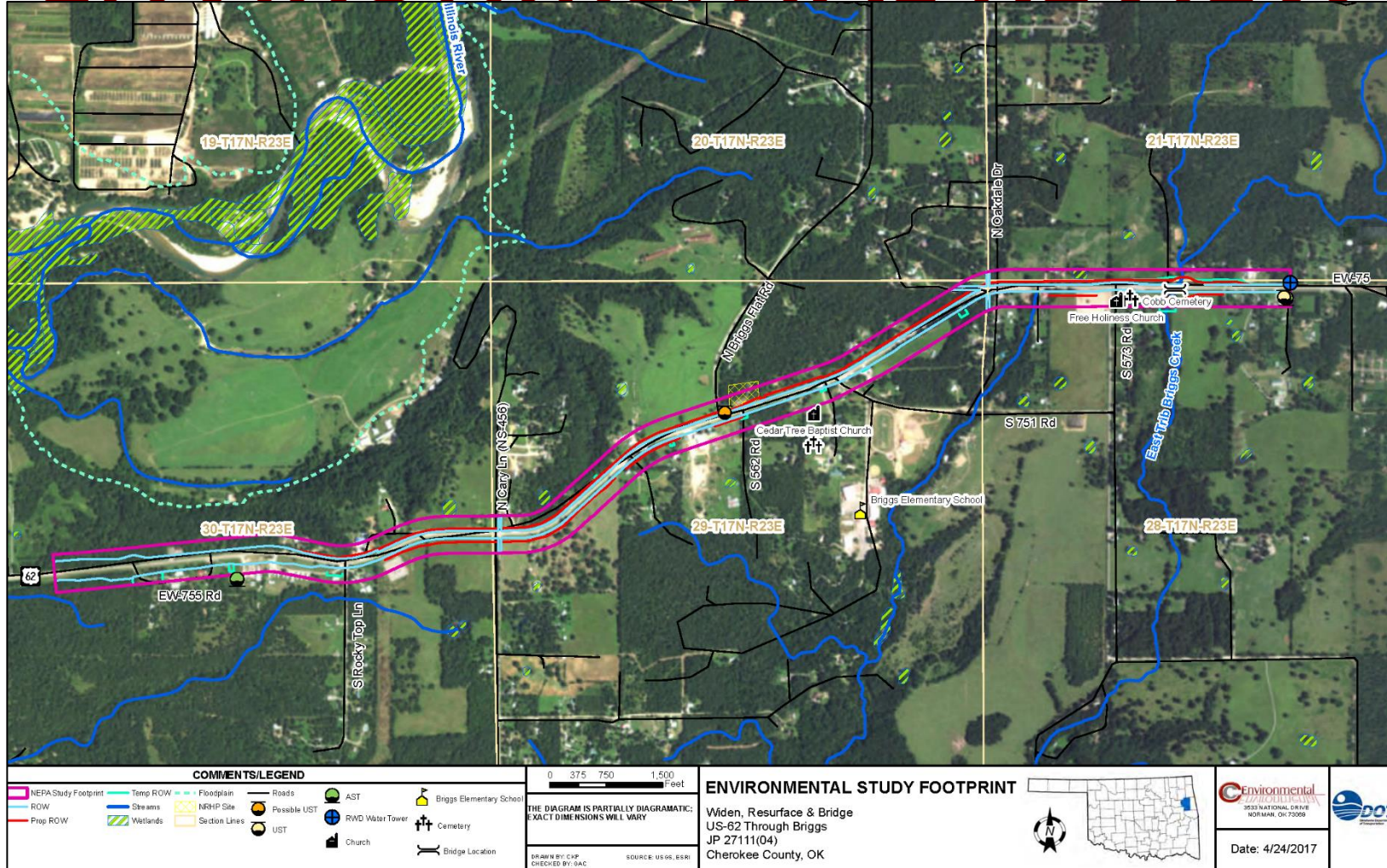
- Two crossings

Endangered Species

- 9 federally listed species
 - Least tern
 - Piping plover
 - Red knot
 - Neosho mucket clam
 - Rabbitsfoot clam
 - American burying beetle
 - Gray bat
 - Northern long-eared bat
 - Ozark big-eared bat



ENVIRONMENTAL REVIEW

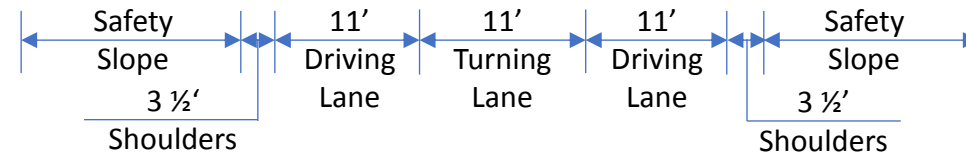
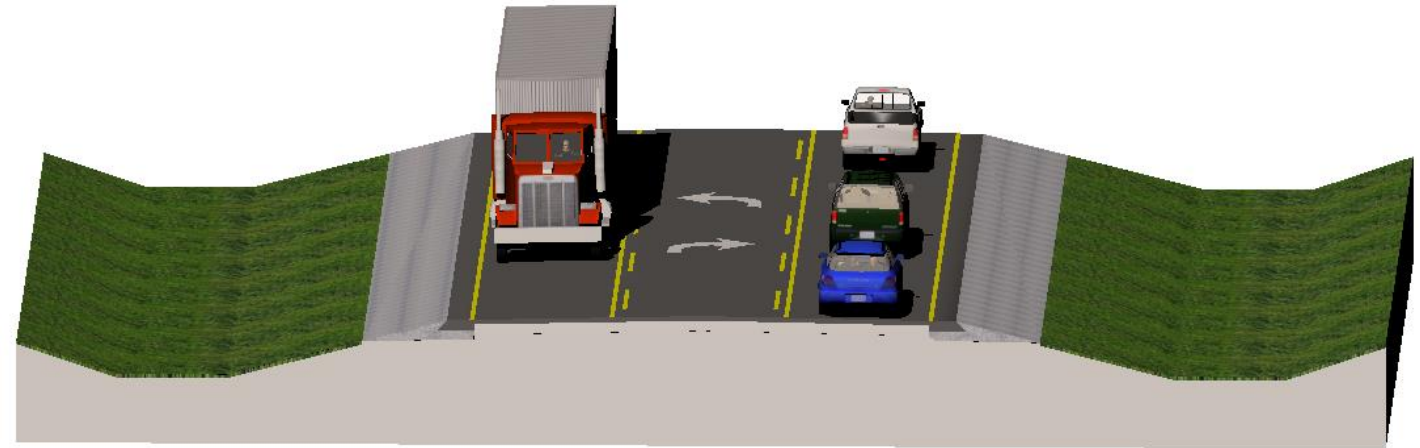




PROPOSED IMPROVEMENTS

Roadway Widening

- 11-foot driving lanes
- Add 3 ½ -foot shoulders
- Add 11-foot center turn lane
- Improve safety slopes
- Correct drainage issues
 - Ditches
 - Cross-drains



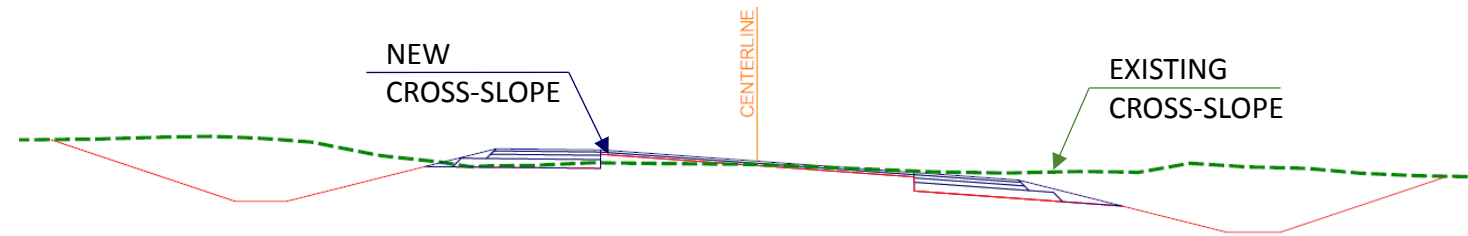
Roadway widening will match and tie into previous project at the beginning.



PROPOSED IMPROVEMENTS

Curve Modifications

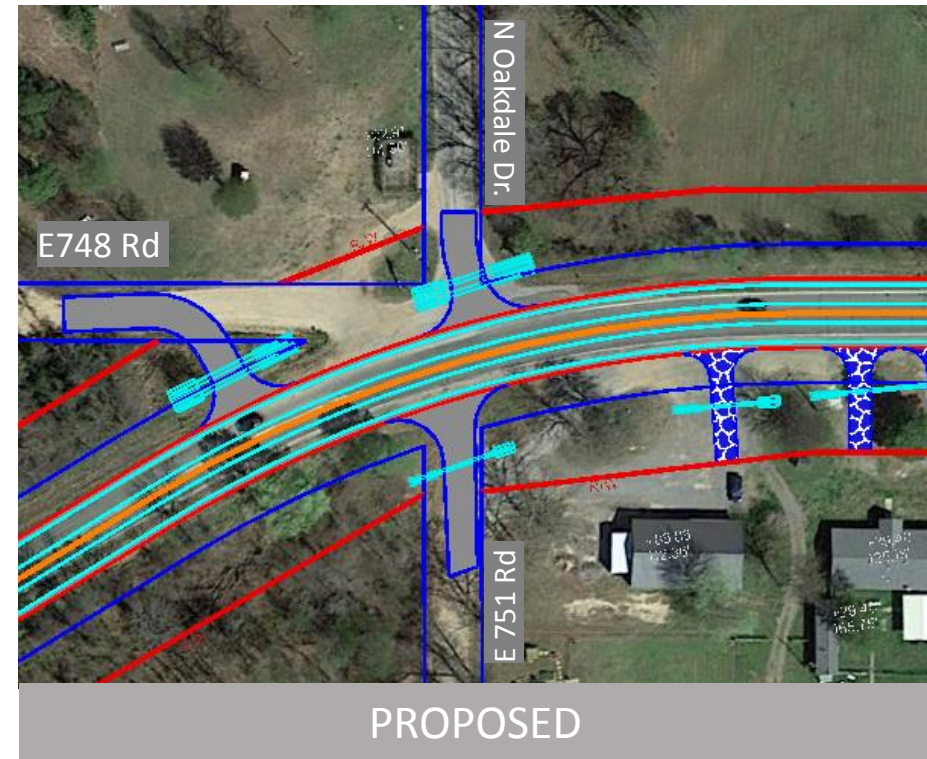
- Current curves do not have adequate cross-slope for the design speed.
- Increased cross-slopes will be utilized on these curves to comply with new design standards.
- These modifications will allow for a safer and more comfortable drive.





PROPOSED IMPROVEMENTS

Intersection Modifications

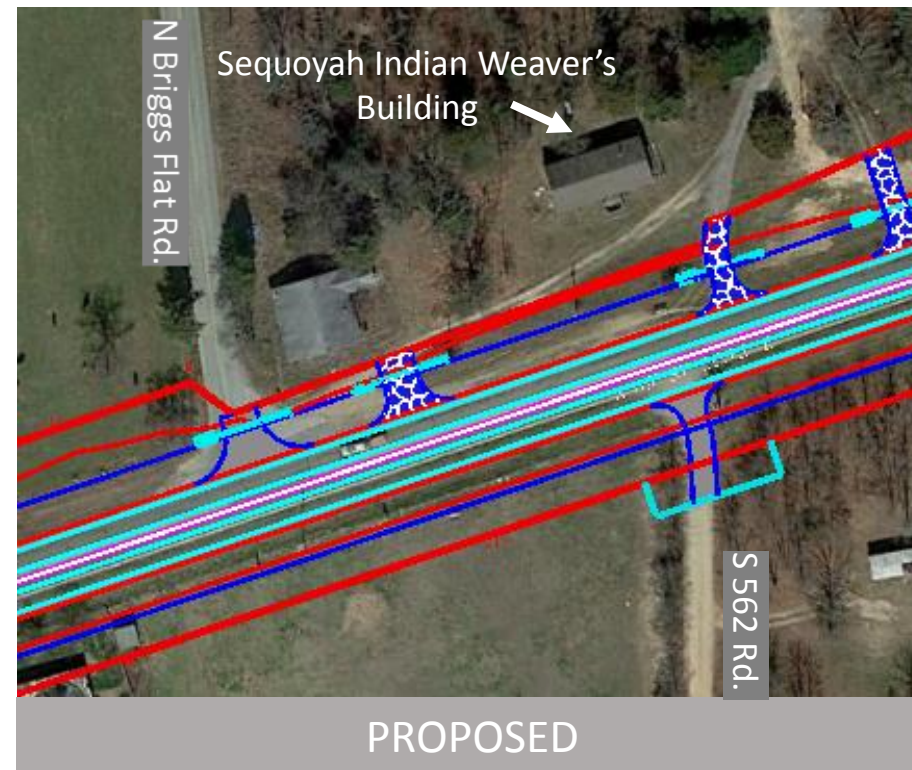


Intersections with poor sight distances will be re-aligned to allow for improved sight distance for turning onto US-62.



PROPOSED IMPROVEMENTS

Intersection Modifications





PROPOSED IMPROVEMENTS

Offset Alignment at End of Project

- 8-foot offset to north
 - Only at east end of project, rest of project to remain on existing alignment
 - Avoids cemetery
 - Minimized right-of-way necessary



Reinforced Concrete Box (RCB)

- Replaces deteriorated bridge box over East Branch of Briggs Creek
- Wider bridge to improve traffic safety





DURING CONSTRUCTION

- US-62 will remain open during construction.
- Utilize temporary pavement detour at east end of project during offset and phased bridge construction.
- Access will be maintained to all residences & businesses.





NEXT STEP

- 1** Review Public Comments Received
- 2** Complete Environmental Document
- 3** Finalize Design Plans
- 4** Right-of-Way & Utility Relocation
Programmed: Federal Fiscal Year 2017*
- 5** Construction
Programmed: Federal Fiscal Year 2018*

* Subject to funding availability.



THANK YOU

PLEASE SUBMIT COMMENTS BY:

JUNE 15TH, 2017

Leave your comment form here tonight

Mail your comments to ODOT:

Oklahoma Department of Transportation

Environmental Programs Division

200 NE 21st Street

Oklahoma City, OK 73105

Fax your comments to: (405) 522-5193

Email you comments to: environment@ODOT.org

Submit online at: www.ODOT.org/PublicMeetings



AGUIRRE & FIELDS LP
ENGINEERS AND PLANNERS

