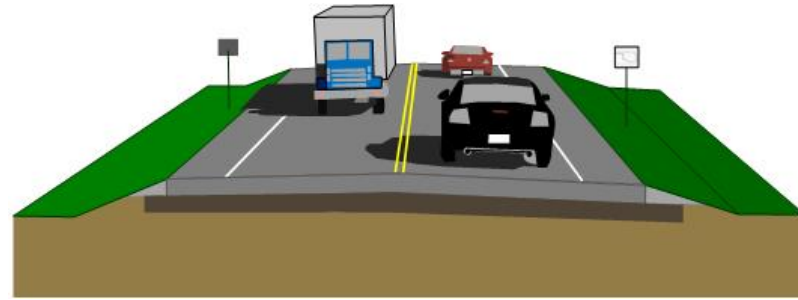


PROJECT LOCATION MAP



PROPOSED TYPICAL SECTION



2-Lane Typical Roadway Section

Typical includes: two 12-foot wide driving lanes; 6-foot wide shoulders

PROJECT INFORMATION SUMMARY

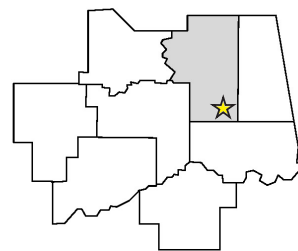
- Right-of-Way & Utility Relocation programmed to start in: **2021**
- Construction programmed to start in: **2023**
- Current Annual Average Daily Traffic (AADT) in year 2019: **2,000 Vehicles a Day**
- Future Estimated AADT by year 2050: **3,280 Vehicles a Day**

DIVISION 1 ENGINEER: CHRIS WALLACE, P.E.

Total Road Miles*: Total Interstate Miles*: Total Bridges*:

1,110.70 97.31 698

Counties: Adair, Cherokee, Haskell, McIntosh, Muskogee, Okmulgee, Sequoyah, Wagoner



*Totals DO NOT include County Bridges
*Totals DO NOT include Toll Roads

PLEASE PROVIDE YOUR COMMENTS BY FEBRUARY 27, 2020

For more information about the project

Leslie Novotny
NEPA Project Supervisor
ODOT - EPD
(405) 521-2321

environment@odot.org

For more information about Public Participation

Jenny Droscher
Public Involvement Officer
ODOT - EPD
(405) 246-6975



February 13, 2020
5:00 p.m. to 7:00 p.m.

Cookson United Methodist Church | 21685 W Cookson Bend Rd. | Cookson, OK 74427

SH-82 • Cherokee County, OK • 32097(04) Presentation of Proposed Improvements & Solicitation of Public Input

Purpose of Open House

The purpose of the Open House meeting is to inform the public of the proposed improvements and answer questions regarding construction activities, sequencing, and scheduling.

Project Background

The Oklahoma Department of Transportation (ODOT), in cooperation with the Federal Highway Administration (FHWA), proposes to make safety improvements to SH-82 from 4 miles south of the SH-100/SH-82 junction and extending north approximately 3.7 miles in Cherokee County, Oklahoma. This segment of SH-82 is a two-lane roadway with 12-foot wide driving lanes, narrow shoulders, deteriorating pavement, and limited sight distances. There are two bridges within the project extent. The reinforced concrete box (RCB) bridge over an unnamed tributary to Elk Creek (NBI# 13149) is narrow with a 30-foot clear roadway. The span bridge over Elk Creek (NBI# 22384) has a 44-foot wide clear roadway. Current traffic volumes are estimated at 2,000 vehicles per day (VPD) and are projected to increase to 3,280 VPD by 2050. The purpose of the proposed project is to correct roadway deficiencies, enhance safety, and efficiently accommodate traffic.

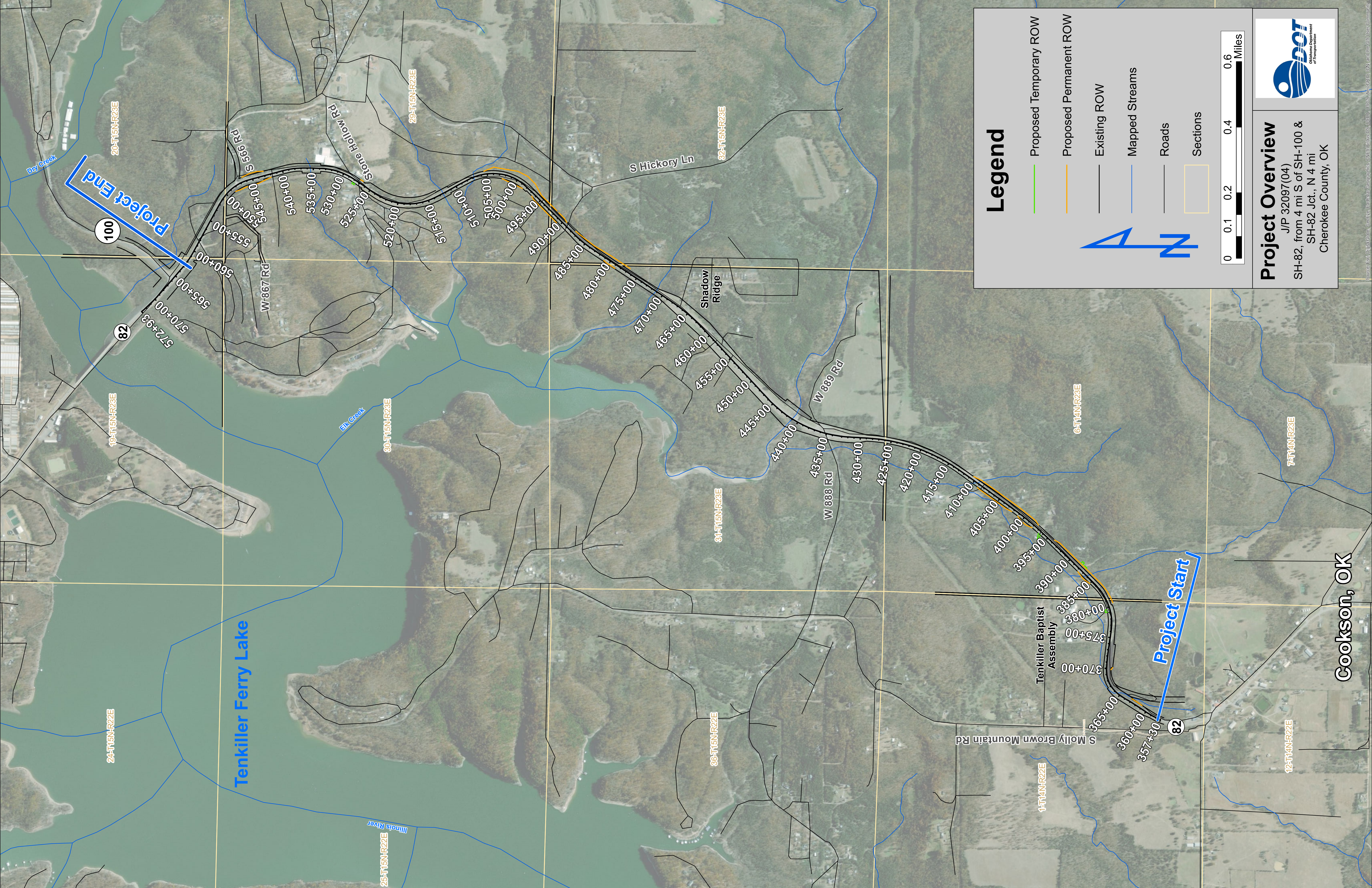
Project Description

ODOT is developing design plans for improving this segment of SH-82 while taking into consideration the cost of construction, right-of-way and utilities impacts, and environmental constraints. ODOT proposes to improve driving surfaces, reconfigure driveways and entrances, realign county road intersections, widen shoulders, and extend roadway structures and the RCB bridge. The highway will be widened to create two 12-foot wide paved driving lanes with 6-foot wide paved shoulders on existing alignment. The RCB bridge will be lengthened to create a safe clear roadway width, and the guardrail will be replaced on the Elk Creek bridge.

The proposed design will meet current standards. SH-82 will remain open during construction, and access to residences and businesses will be maintained throughout the project duration.

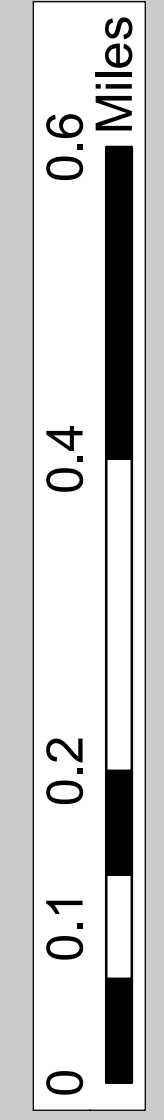
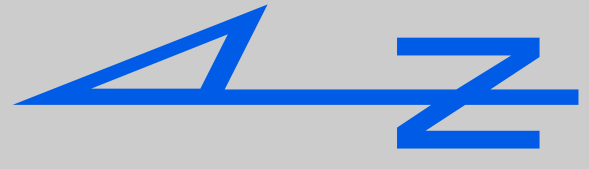
<http://www.odot.org/publicmeetings>





Legend

- Proposed Temporary ROW
- Proposed Permanent ROW
- Existing ROW
- Mapped Streams
- Roads
- Sections



Project Overview
 J/P 32097(04)
 SH-82, from 4 mi S of SH-100 &
 SH-82 Jct., N 4 mi
 Cherokee County, OK

Cookson, OK

Source: Esri, DigitalGlobe, GeoEye, Earthstar (Earthstar), IGN, USGS (USGS), AeroGRID, IGN, and the GIS User Community