

PROJECT INFORMATION SUMMARY

PROJECT IMPROVEMENTS

- Widen and reconstruct I-35 to three 12-foot wide driving lanes in each direction
- Ramp modifications with improvements to the acceleration and deceleration lanes
- Replace existing bridges with new structures
- Construct project within existing right-of-way

TRAFFIC IMPACTS

- 2 Travel Lanes to Remain Open in Each Direction
- Phased Construction Used to Maintain Existing Traffic

EXPECTED LET DATE 2031

- Estimated cost \$ 45 million

DISTRICT 4 ENGINEER: TRENTON JANUARY, P.E.

*Totals DO NOT include Toll Roads

***Total Road Miles**
1,415.17

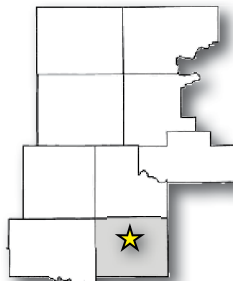
***Total Interstate Miles**
222.43

**Totals DO NOT include County Bridges

****Total Bridges**
1,132

COUNTIES

Canadian, Garfield, Grant, Kay, Kingfisher, Logan, Noble, *Oklahoma*, Payne



PLEASE PROVIDE YOUR COMMENTS BY: 10/17/2024



IN PERSON

Fill out a comment form



ONLINE

Go to www.odot.org/PublicMeetings
Or Scan the QR Code



EMAIL

environment@odot.org



VOICEMAIL

Leave a voicemail at
405-325-3269



MAIL

Environmental Programs Division
Oklahoma Department of Transportation
200 N.E. 21st St.
Oklahoma City, OK 73105

For information about the project:
(405) 325-3269 or email: environment@odot.org

PUBLIC OPEN HOUSE



Date: October 3, 2024

4:00pm - 6:30pm

Willa D. Johnson Recreation Center
909 Fredrick Douglass Avenue
Oklahoma City, OK 73117

**Improvements to I-35 from I-40
(Fort Smith Jct.) extending
north to I-44 (Deep Fork)
Oklahoma County, OK
JP 20330(04)**
www.odot.org/publicmeetings



PUBLIC OPEN HOUSE

The Oklahoma Department of Transportation (ODOT), in conjunction with Federal Highway Administration (FHWA), will host an open house public meeting to present the proposed improvements to I-35 from I-40 (Fort Smith Junction) extending north approximately 4.5 miles to I-44 (Deep Fork) in Oklahoma County. This is a come and go open house meeting with no formal presentation.



PURPOSE & NEED

The purpose of the project is to improve the safety and operation of I-35, by widening the existing roadway to three 12-foot driving lanes in each direction to facilitate an ultimate six-lane corridor.

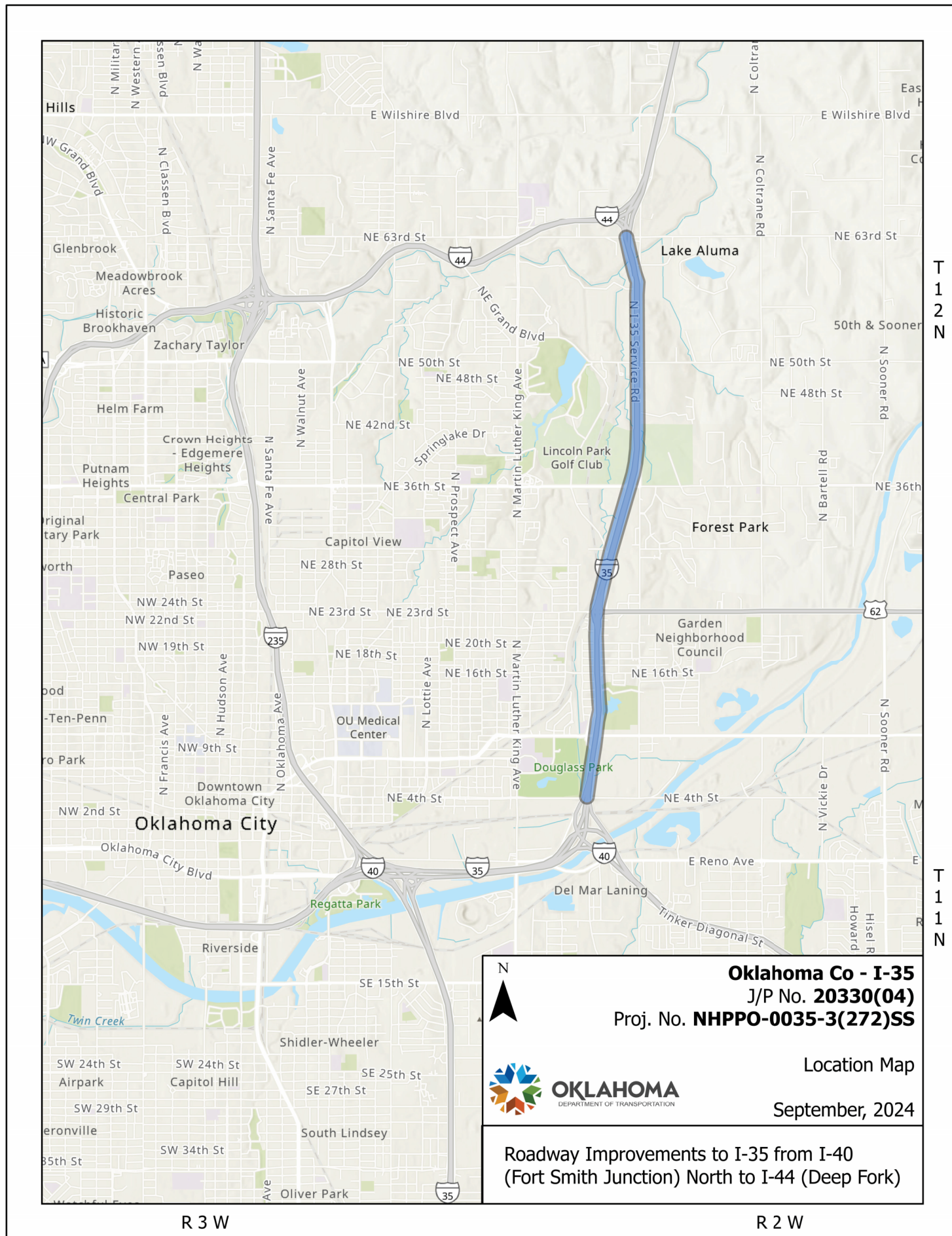


JOIN

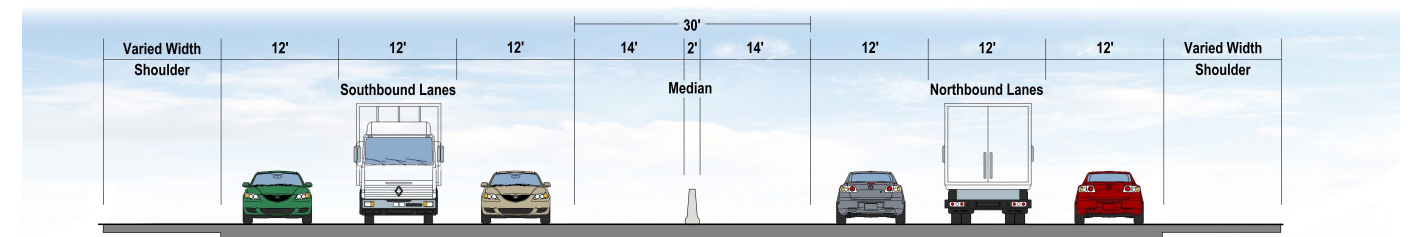
www.odot.org/publicmeetings



OKLAHOMA
Transportation



PROPOSED TYPICAL SECTION



6-Lane Typical Section
 Typical includes: 15-foot wide inside shoulder; three 12-foot wide driving lanes; variable width outside shoulder

PROJECT BACKGROUND

The I-35 corridor from the Oklahoma River north to NE 63rd Street borders and provides access to numerous destinations. These include Oklahoma City's Lincoln Park Golf Course, Twin Hills Country Club, and most notably the Adventure District, whose members include Remington Park, the National Softball Hall of Fame, the Oklahoma Railway Museum, and the Oklahoma City Zoo. The southern part of this corridor also has a large area of residential development.

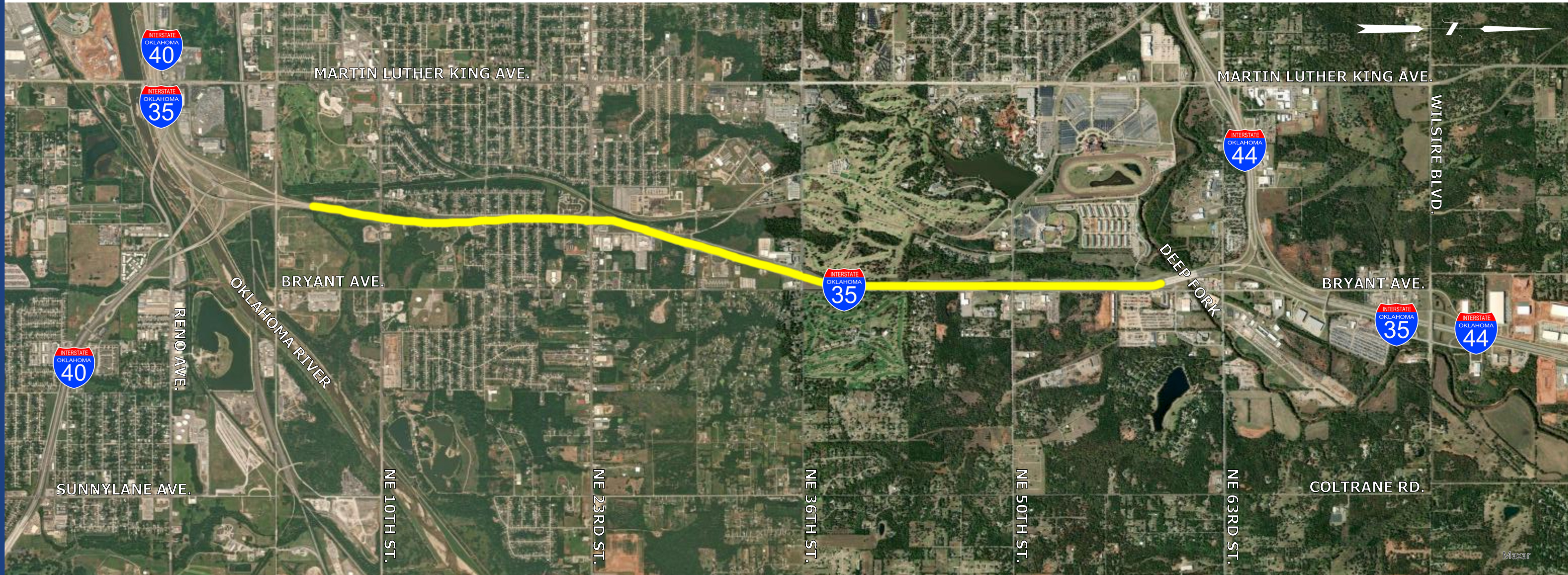
From the time I-35 was first constructed in the early 1960s to today, the Oklahoma City metropolitan area has continued to grow, causing traffic to also increase. ODOT has tried to keep up with this continued growth in the Oklahoma City metro area through the widening of I-35 to 6 lanes. The stretch of I-35 between I-40 (Fort Smith Junction) and I-44 (Deep Fork) is one of the last sections that remains 4 lanes from the South Canadian River north 22 miles to 2nd Street in Edmond.

PROJECT DESCRIPTION

The project is to improve the safety and operation of I-35 beginning just north of I-40 (Fort Smith Junction) extending north approximation 4.5 miles to I-44 interchange. The project includes widening the existing roadway to three (3) 12-foot driving lanes in each direction with new pavement along the corridor. Additionally, the existing bridges would be replaced with new structures and modifications will be made to the ramps acceleration and deceleration lanes to facilitate the development of the (6) six-lane corridor. It is anticipated that no new right-of-way will be required for the construction of this project. This project will be coordinated with ongoing improvements to the I-44 Interchange at the north end of the project.



Project area for improvements to I-35 from I-40 (Fort Smith Junction) extending north approximately 4.5 miles to I-44 (Deep Fork) Oklahoma County; JP 20330(04)



LEGEND

Project Location



PROJECT IMPROVEMENTS

- Widen & Reconstruct I-35 to three 12-foot wide driving lanes in each direction
- Ramp modifications with improvements to the acceleration and deceleration lanes
- Replace existing bridges with new structures
- Construct within existing right-of-way

TRAFFIC IMPACTS

- 2 Travel Lanes to Remain Open in Each Direction During Construction
- Phased Construction Used to Maintain Existing Traffic

EXPECTED LET DATE 2031