

*Join
Us!*

VIRTUAL PUBLIC MEETING

July 24 - August 14, 2020

I-40 Grade, Drain, Bridge and Surface from the Oklahoma County Line, east approximately 7.5 Miles to US-177 (US-270), in Pottawatomie County, JP 21007(07)(10)(13)

<https://www.odot.org/I40PottawatomieCo>



VIRTUAL PUBLIC MEETING

The Oklahoma Department of Transportation will host a virtual public meeting to present the latest information on the I-40 reconstruction and widening from the Oklahoma County Line to US-177 (US-270) project. This meeting will present the most recent design for the project and allow the public to submit input. Due to concerns over the spread of COVID-19, this will be a web-based format (no in-person meeting). The information will be available beginning July 24, 2020 and comments are requested by August 14, 2020.



Purpose

The purpose of the project is to increase the capacity of I-40, improve safety and operations, and to increase the longevity of the pavement on I-40. An increase in capacity at I-40 is needed because the current average daily traffic (ADT) is 40,000 vehicles per day and the ADT is projected to increase to 67,280 vehicles per day by 2050.

To increase capacity and improve safety and traffic flow, ODOT is proposing a project which will widen I-40 from the Oklahoma/Pottawatomie County Line, which is located a mile east of Harrah-Newalla Road (mile marker 172), east 7.5 miles to US 177 (US 270; mile marker 181) in Shawnee by adding an additional driving lane and widening shoulders on both eastbound and westbound I-40. The I-40 Interchange at SH 102 North (McCloud Road) will be modified to include three roundabouts (two at the intersection with the I-40 ramps and one at a proposed new I-40 frontage road). Roundabouts are a common intersection type, and the three roundabouts are proposed to maximize safety by reducing conflict point and minimize traffic delay from traffic signals. The new frontage road is proposed on the north side of I-40 connecting McCloud Road to SH-102 South to aid in local traffic circulation. The project also includes the replacement of seven bridges and permanent removal of three county road bridges over I-40.



Join

<https://www.odot.org/I40PottawatomieCo>



**OKLAHOMA
Transportation**

July 22, 2020

Dear Stakeholders, Property Owners and Utility Owners:

RE: I-40 Grade, Drain, Bridge and Surface from the Oklahoma County Line, east approximately 7.5 Miles to US-177(US-270), in Pottawatomie County, Job Piece Numbers 21007(07)(10)(13)

The Oklahoma Department of Transportation (ODOT), in cooperation with the Federal Highway Administration (FHWA), is proposing to improve I-40 in Pottawatomie County from the Oklahoma/Pottawatomie County line east to the US-177 interchange.

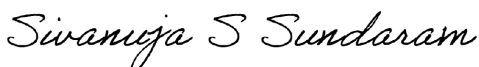
To increase capacity and improve safety and traffic flow, ODOT is proposing a project which will widen I-40 from the Oklahoma/Pottawatomie County Line, which is located a mile east of Harrah-Newalla Road (mile marker 172), east 7.5 miles to US 177 (US 270; mile marker 181) in Shawnee by adding an additional driving lane and widening shoulders on both eastbound and westbound I-40. Interchange at SH 102 North (McCloud Road) will be modified to include three roundabouts (two at the intersections with the I-40 ramps and one at a proposed new I-40 frontage road). Roundabouts are a common intersection type, and the three roundabouts are proposed to maximize safety by reducing conflict points and minimize traffic delay from traffic signals. The new frontage road is proposed on the north side of I-40 connecting McCloud Road to SH-102 South to aid in local traffic circulation. The project also includes the replacement of seven bridges and the permanent removal of three bridges within the project extents.

Due to ongoing concerns about COVID-19, ODOT will host a virtual public meeting from **July 24 to August 14, 2020** to present the design for the project and allow the public to submit input. Results of the detailed environmental studies conducted for the project will also be available to view. This pamphlet contains additional information about the virtual public meeting.

If you are leasing this property, please notify your lessee of this virtual public meeting.

Should you have any questions regarding the project, please email environment@odot.org, or call 405-521-3050 and leave a detailed message.

Respectfully,



Siv Sundaram, P.E.

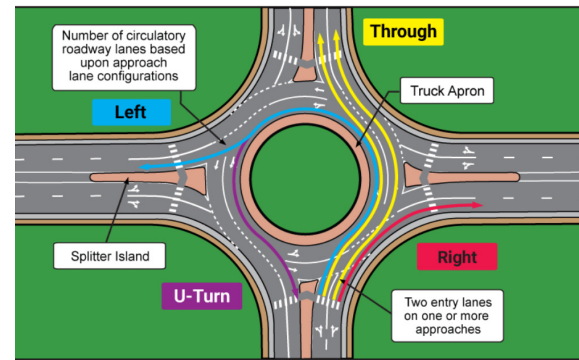
Environmental Programs Division Engineer

The Oklahoma Department of Transportation (ODOT) ensures that no person or groups of persons shall, on the grounds of race, color, sex, religion, national origin, age, disability, retaliation or genetic information, be excluded from participation in, be denied the benefits of, or be otherwise subjected to discrimination under any and all programs, services, or activities administered by ODOT, its recipients, sub-recipients, and contractors. To request an accommodation please contact the ADA Coordinator at 405-521-4140 or the Oklahoma Relay Service at 1-800-722-0353 no later than 72 hours before any scheduled event. If you have any ADA or Title VI questions email ODOT-ada-titlevi@odot.org.

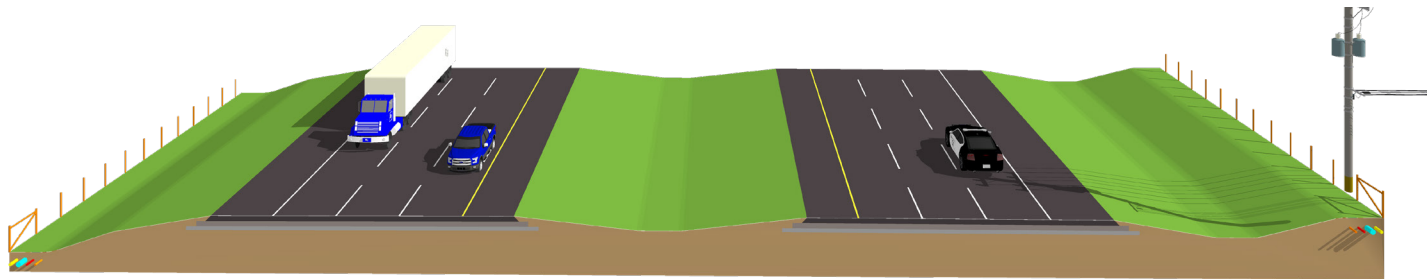
"The mission of the Oklahoma Department of Transportation is to provide a safe, economical, and effective transportation network for the people, commerce and communities of Oklahoma."

MODERN ROUNDABOUTS

Modern roundabouts are a common form of unsignalized intersection control in use throughout the world. In a roundabout intersection, one-way traffic moves around a central island, and entering traffic must yield to circulating traffic. Modern roundabouts maximize safety by reducing conflict points and minimizing traffic delays from traffic signals. Roundabouts are also more cost effective than traffic lights as they eliminate hardware, maintenance, and electrical costs associated with the signals.



PROPOSED SIX-LANE INTERSTATE TYPICAL SECTION



PROJECT INFORMATION SUMMARY

- Total Programmed Estimated Cost of these projects: **\$77 Million**
- Right-of-Way & Utility Relocation programmed to start in: **2021**
- Construction programmed to start in: **2022**
- Current Annual Average Daily Traffic (AADT) in year 2019: **40,000 Vehicles per day**
- Future Estimated AADT by year 2050: **67,280 Vehicles per day**
- During construction, two lanes of traffic will be maintained in each direction of I-40 except for temporary lane closures during non-peak travel times.

*Totals DO NOT include Toll Roads

DIVISION 3 ENGINEER: RON BROWN, P.E.

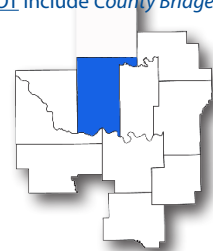
**Totals DO NOT include County Bridges

***Total Road Miles:**
1,791.65

***Total Interstate Miles:**
163.67

****Total Bridges:**
933

Counties: Cleveland, Coal, Garvin, Hughes, Johnston, Lincoln, McClain, Okfuskee, Pontotoc, **Pottawatomie**, Seminole



PLEASE PROVIDE YOUR COMMENTS BY AUGUST 14, 2020

For more information about the project

Joe Brutsché

Preconstruction Manager, Division 3
ODOT Project Management Division
(405) 522-7602

environment@odot.org

For more information about Public Participation

Jenny Droscher

Public Involvement Officer
ODOT Environmental Division
(405) 246-6975

<http://www.odot.org/I40PottawatomieCo>



OKLAHOMA
Transportation

VIRTUAL PUBLIC MEETING

July 24 - August 14, 2020

I-40 Grade, Drain, Bridge and Surface from the Oklahoma County Line, east approximately 7.5 Miles to US-177 (US-270), in Pottawatomie County, OK • JP 21007(07)(10)(13)

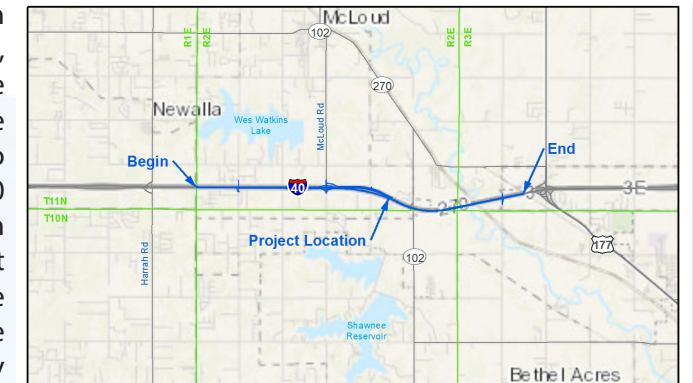
Project Descriptions & Solicitation of Public Input

Purpose of Virtual Meeting

The purpose of the Virtual Public Meeting is to present the proposed project and solicit input from the public regarding construction activities, sequencing, and scheduling.

Project Background

The Oklahoma Department of Transportation (ODOT), in cooperation with the Federal Highway Administration (FHWA), proposes to improve I-40 in Pottawatomie County from the Oklahoma/Pottawatomie County Line, which is located a mile east of Harrah-Newalla Road (mile marker 172), east 7.5 miles to US 177 (US 270; mile marker 181) in Shawnee. The existing I-40 roadway consists of two 12-foot asphalt driving lanes in each direction, with 10-foot asphalt outside shoulders, 4-foot asphalt inside shoulders, and a variable central median width. The pavement is in fair condition. There are 10 bridges and drainage structures within the project extents. Currently, the average daily traffic (ADT) is 40,000 vehicles per day, and the ADT is projected to increase to 67,280 vehicles per day by 2050.



Project Purpose and Need

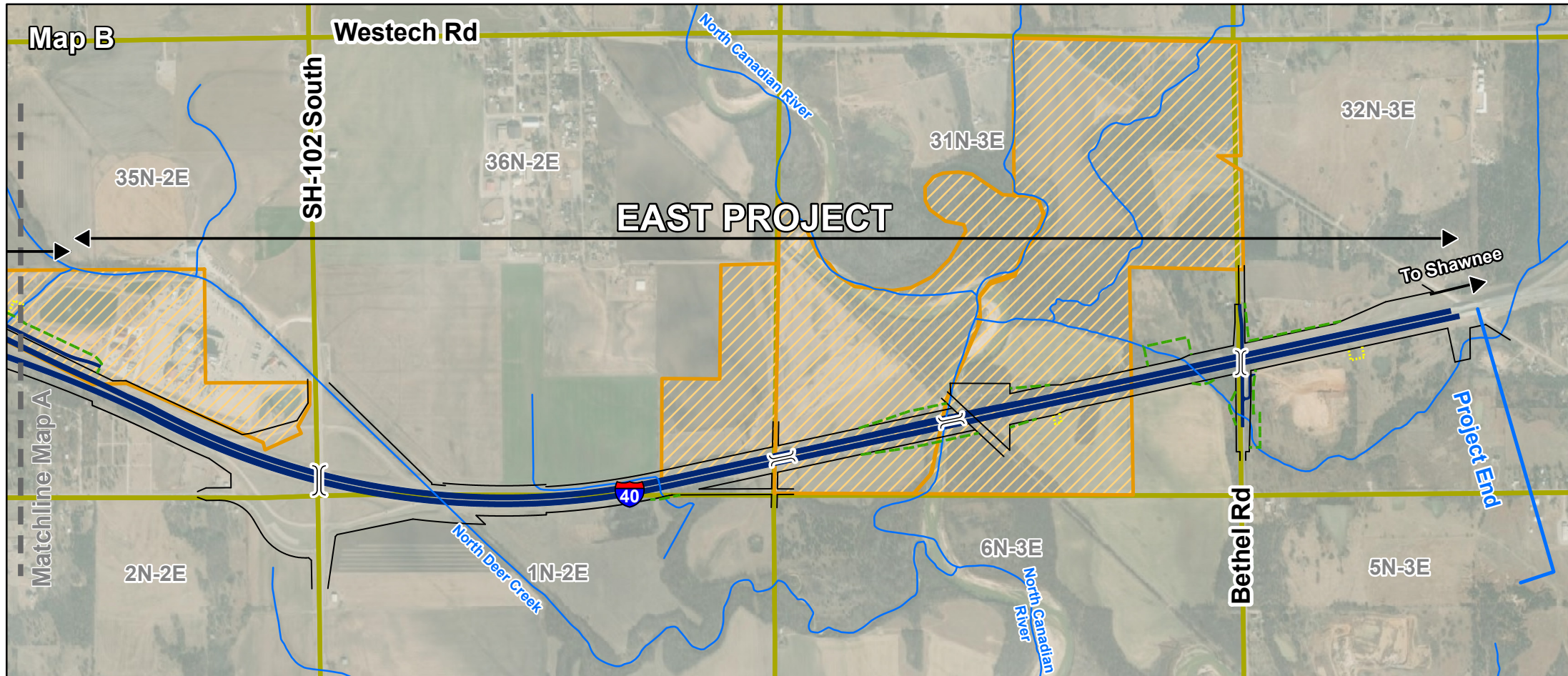
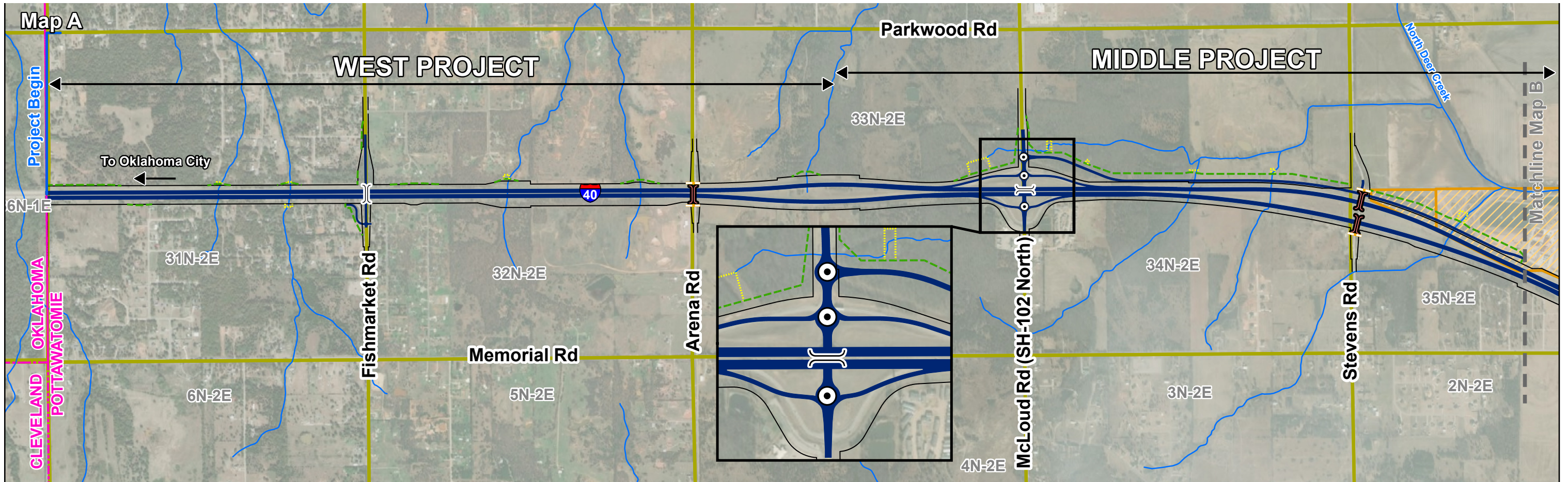
The purpose and need for this project is to increase the capacity of I-40, improve safety and operations, and to increase the longevity of the pavement on I-40.

Project Description

ODOT is developing design plans for improving this segment of I-40 while taking into consideration the cost of construction, right-of-way and utilities impacts, and environmental constraints. The project will widen I-40 from the Oklahoma/Pottawatomie County Line, which is located a mile east of Harrah-Newalla Road (mile marker 172), east 7.5 miles to US 177 (US 270; mile marker 181) in Shawnee. An additional 12-foot wide driving lane will be added to the eastbound and westbound driving lanes. A 12-foot wide shoulder will be added to the inside and a 10-foot wide shoulder will be added to the outside of the eastbound and westbound driving lanes. A cable median barrier is proposed in the central median. Interchange at SH 102 North (McCloud Road) will be modified to include three roundabouts (two at the intersections with the I-40 ramps and one at a proposed new I-40 frontage road). Roundabouts are a common intersection type, and the three roundabouts are proposed to maximize safety by reducing conflict points and minimize traffic delay from traffic signals. The new frontage road is proposed on the north side of I-40 connecting McCloud Road to SH-102 South to aid in local traffic circulation, and it will consist of two undivided, 12-foot driving lanes with 4-foot shoulders. The interchange ramps at McCloud Road will be realigned and lengthened to provide additional acceleration/deceleration lengths to improve traffic safety and operations. The project also includes the replacement of seven bridges and the permanent removal of three bridges. The bridges to be permanently removed include the bridge crossing over I-40 at Arena Road (NS-331) and the two bridges crossing over I-40 at Blackberry Drive/Stevens Road (NS-333).

During construction, two lanes of traffic will be maintained in each direction of I-40, except for short duration temporary lane closures during night or non-peak travel times. McCloud Road will remain open to traffic during construction except for temporary closures for existing bridge removal or new bridge construction. The county roads over I-40 will be closed to through traffic for bridge removal and reconstruction with traffic detoured to the adjacent roads.

These improvements will be constructed as three separate projects that are included in ODOT's eight-year construction program. Construction is programmed to start in 2022.



Legend

	Proposed End-of-Road Barricade		Proposed Improvements
	Bridge		County Boundaries
	Removed Bridge		Mapped Streams
	Roundabout		Tribal Property
	Overview Matchline		Sections
	Proposed R/W		
	Temporary R/W		
	Present R/W		

0 0.1 0.2 0.4 0.6 0.8 Miles

Project Overview

J/P 21007(07)(10)(13)
 I-40 Grade, Drain, Bridge and Surface from the Oklahoma County Line, east approximately 7.5 Miles to US-177 (US-270), in Pottawatomie County, OK