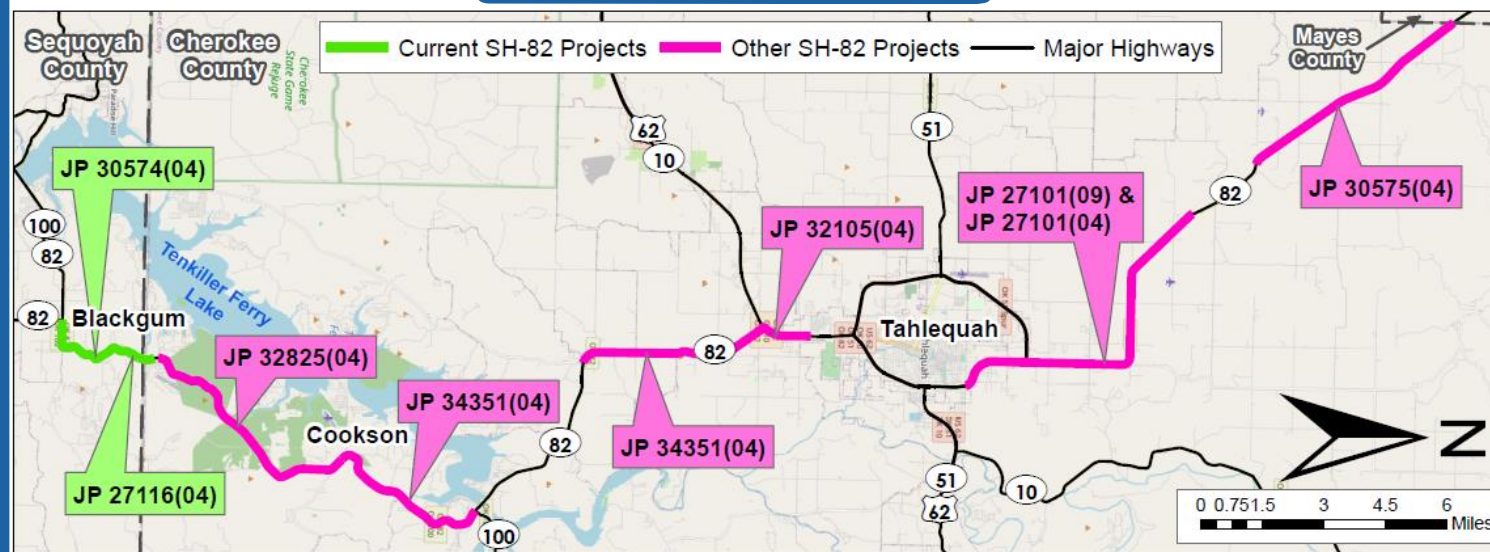


OTHER SH-82 PROJECTS



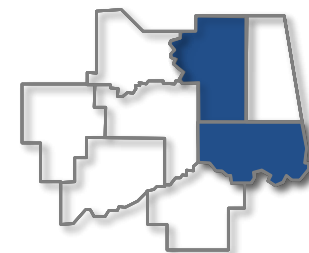
PROJECT INFORMATION SUMMARY

- Right-of-Way & Utility Relocation anticipated to start in: **2021**
- Construction anticipated to start in: **2023**
- Current Annual Average Daily Traffic (AADT) in year 2020: **1,600 Vehicles a day**
- Future Estimated AADT in year 2040: **2,250 Vehicles a day**
- Highway will remain open to traffic at all times during construction

DISTRICT 1 ENGINEER: CHRIS WALLACE, P.E.

*Totals DO NOT include Toll Roads
 **Totals DO NOT include County Bridges

Total Road Miles*: 1,109.50 **Total Interstate Miles*:** 97.27 **Total Bridges**:** 706



Counties: Adair, Cherokee, Haskell, McIntosh, Muskogee, Okmulgee, Sequoyah, Wagoner

PLEASE PROVIDE YOUR COMMENTS BY 10/19/2020

For more information about the project, contact:

Phone: (405) 521-3050

or

Email: environment@odot.org

<http://www.odot.org/publicmeetings>



VIRTUAL OPEN HOUSE

October 2 - 19, 2020

SH-82 near Blackgum, OK from the SH-100/SH-82 junction, extending east and north ~3 miles
 Sequoyah & Cherokee Counties:
 JP 30574(04) & 27116(04)

www.odot.org/SH82/Sequoyah



VIRTUAL OPEN HOUSE

The Oklahoma Department of Transportation will host a virtual open house to present the latest information on the SH-82 project near Blackgum. This meeting will present the most recent design for the project and allow the public to submit input. Due to concerns over the spread of COVID-19, this will be a web-based format (no in-person meeting). The information will be available beginning October 2, 2020 and comments are requested by October 19, 2020.



PURPOSE

The purpose of this project is to increase driver safety by correcting this segment of SH-82 with deteriorating pavement, no shoulders, sharp curves, limited sight distances, and steep slopes, and to replace a narrow bridge.

The public may view the project on the virtual Open House website, including details about right-of-way acquisition and access, and more details about the proposed improvements.



JOIN

www.odot.org/SH82/Sequoyah



September 25, 2020

RE: Virtual Open House for SH-82 Improvements: From the SH-100/SH-82 Junction in Blackgum, OK; Extending East & North ~3 Miles Sequoyah & Cherokee Counties
State Job Piece Numbers: JP 30574(04) & 27116(04)

Dear Stakeholders, Property Owners, and Utility Owners:

The Oklahoma Department of Transportation (ODOT), in cooperation with the Federal Highway Administration (FHWA), proposes to make highway improvements to this segment of SH-82 from the SH-100/SH-82 junction in Blackgum, OK and extending east and north approximately 3 miles. The purpose of the proposed improvements is to correct highway deficiencies, enhance safety, and efficiently accommodate traffic.

Due to ongoing concerns about COVID-19, ODOT will host a virtual Open House from **October 2, to October 19, 2020**, to present the design for the project and allow the public to submit input. Results of the detailed environmental studies conducted for the project will also be available to view. This pamphlet contains additional information about the virtual Open House and a handout describing our right-of-way acquisition process. This right-of-way handout is for informational purposes only as your property may or may not be affected by the proposed project. After the virtual Open House, the meeting materials will be available on the ODOT Public Meeting Website: <http://www.odot.org/publicmeetings>

If you are currently leasing this property, please notify your lessee of our virtual Open House.

Should you have any questions regarding this project, please email environment@odot.org, or call (405) 521-3050 and leave a detailed message.

Sincerely,

Sivanuja S Sundaram

Siv Sundaram, P.E.
Environmental Programs Division Engineer

The Oklahoma Department of Transportation (ODOT) ensures that no person or groups of persons shall, on the grounds of race, color, sex, religion, national origin, age, disability, retaliation or genetic information, be excluded from participation in, be denied the benefits of, or be otherwise subjected to discrimination under any and all programs, services, or activities administered by ODOT, its recipients, sub-recipients, and contractors. To request an accommodation please contact the ADA Coordinator at 405-521-4140 or the Oklahoma Relay Service at 1-800-722-0353, no later than 72 hours before any scheduled event. If you have any ADA or Title VI questions email ODOT-ada-titlevi@odot.org.

"The mission of the Oklahoma Department of Transportation is to provide a safe, economical, and effective transportation network for the people, commerce and communities of Oklahoma."

AN EQUAL OPPORTUNITY EMPLOYER

Project Background

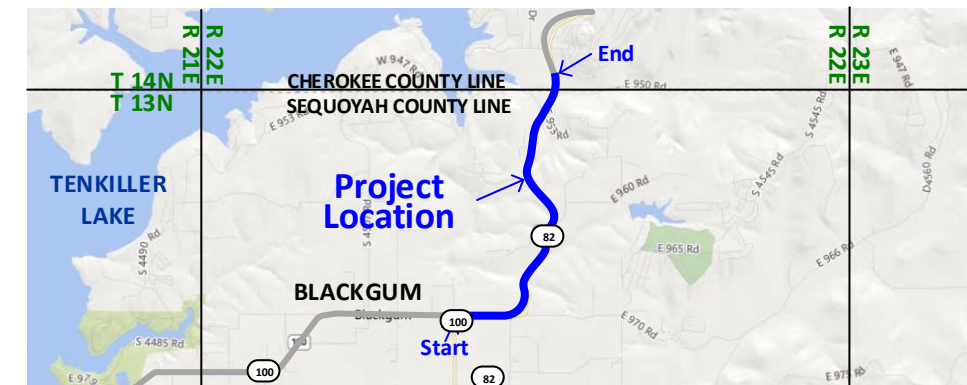
The Oklahoma Department of Transportation (ODOT), in cooperation with the Federal Highway Administration (FHWA), proposes to make safety improvements to SH-82 from the SH-100/SH-82 intersection in Blackgum, OK and extending east and north approximately 3 miles, located in Sequoyah and Cherokee Counties. SH-82 is part of the Cherokee Hills Scenic Byway that begins near Gore, OK and ends near West Siloam Springs, OK. The existing highway is a two-lane, open section facility with 11-foot wide driving lanes and no shoulders. The bridge over Snake Creek is a 22-foot wide span bridge. Current traffic volumes are estimated at 1,600 vehicles per day (vpd) and are projected to increase to 2,250 vpd by 2040. This section of SH-82 has sharp curves, insufficient sight distances, steep side slopes, no shoulders, and a narrow bridge.

In 2015, ODOT tasked a consultant to study five alternatives for improving this segment of highway while taking into consideration the cost of construction, right-of-way and utilities, potential environmental constraints, and the beauty of this scenic byway. The five alternatives were presented at a public Open House meeting held November 15, 2016. Based on the completed alignment study, public participation, and state and federal agency input, ODOT selected a preferred alignment.

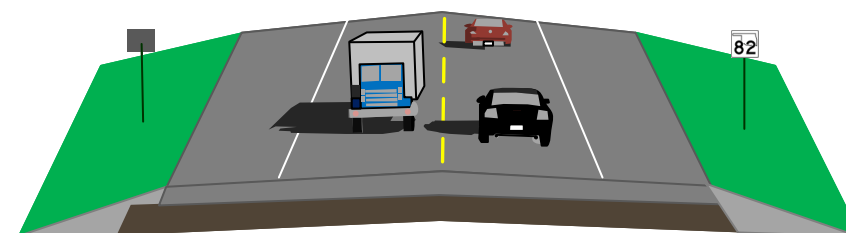
Project Description

In an effort to increase safety, ODOT proposes to improve this segment of SH-82. Starting at McQuick's Grocery, and extending east to where the highway curves north, the roadway will be widened to create a curb and gutter section with two 12-foot wide driving lanes with 6-foot wide shoulders on existing alignment. At the point where SH-82 curves north, the highway will transition to an open section roadway (i.e., no curbs) with two 12-foot wide driving lanes with 8-foot wide paved shoulders on east offset alignment. Skewed side streets, county roads and drives will be reconfigured to create perpendicular intersections. The bridge over Snake Creek will be replaced on east offset alignment with a 40-foot wide clear roadway width span bridge. The highway will remain open during construction, and access to residences and businesses will be maintained throughout the project.

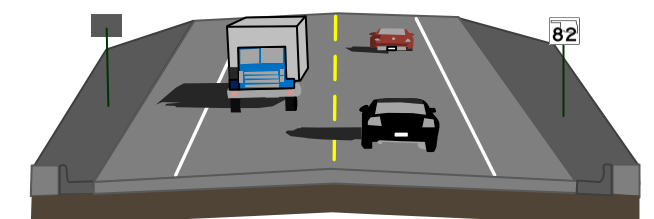
Project Location



Project Typical Sections



2-Lane Typical Open Section
Typical includes: two 12-foot wide driving lanes;
8-foot wide shoulders




2-Lane Typical Curb & Gutter Section
Typical includes: two 12-foot wide driving lanes;
6-foot wide shoulders

Legend

- Project Extent
- ▭ Sections
- ⋯ Mapped Streams

Project Overview

J/P 30574(04) & 27116(04)
 SH-82 from SH-100/SH-82 JCT.,
 Extend East and North Approx. 3 Mi.
 Sequoyah & Cherokee Counties, OK



Scale: 0, 0.17, 0.34 Miles

