



VIRTUAL OPEN HOUSE

October 7 - 21, 2020

SH-28 "East of US-69" Project

from just west of the US-69/SH-28 intersection in Adair, extending east through Pensacola to the SH-82/SH-28 junction in Langley

Mayes County: JP 23270(04) & 24382(04)

www.odot.org/SH28Mayes



VIRTUAL OPEN HOUSE

The Oklahoma Department of Transportation will host a virtual open house to present the latest information on the SH-28 "east of US-69" project beginning just west of the US-69/SH-28 junction in Adair and extending east through Pensacola to the SH-82/SH-28 intersection in Langley. This virtual open house will present the most recent design for the project and allow the public to submit input. Due to concerns over the spread of COVID-19, this will be a web-based format (no in-person meeting). The information will be available beginning October 7, 2020 and comments are requested by October 21, 2020.



PURPOSE

The purpose of this project is to increase driver safety and accommodate the current and anticipated traffic volumes along the corridor.

The public may view the entire project design on the virtual open house website, including details about right-of-way acquisition and access, and more details about the proposed improvements.



JOIN

www.odot.org/SH28Mayes



**OKLAHOMA
Transportation**



September 29, 2020

RE: Virtual Open House for SH-28 Improvements “East of US-69” Project: From just west of the US-69/SH-28 Intersection in Adair, Extending east Through Pensacola to the SH-82/SH-28 Junction in Langley, Mayes County, OK
State Job Piece Numbers: J/P 24382(04) & 23270(04)

Dear Stakeholders, Property Owners, and Utility Owners:

The Oklahoma Department of Transportation (ODOT), in cooperation with the Federal Highway Administration (FHWA), is re-evaluating the environmental document for this segment of SH-28 from the US-69/SH-28 junction in Adair, and extending east approximately 13 miles through Pensacola to the SH-82/SH-28 junction in Langley, Mayes County, Oklahoma. An Environmental Assessment was completed in July of 2010. The purpose of this project was and still is to improve safety.

Due to ongoing concerns about COVID-19, ODOT will host a virtual Open House from **October 7 to October 21, 2020**, to present the design for the project and allow the public to submit input. Results of the detailed environmental studies conducted for the project will also be available to view. This pamphlet contains additional information about the virtual open house and a handout describing our right-of-way acquisition process. This right-of-way handout is for informational purposes only as your property may or may not be affected by the proposed project. After the virtual Open House, the meeting materials will be available on the ODOT Public Meeting Website: <http://www.odot.org/publicmeetings>

If you are currently leasing this property, please notify your lessee of our virtual Open House.

Should you have any questions regarding this project, please email environment@odot.org, or call 405-521-3050 and leave a detailed message.

Sincerely,

Sivaniya S Sundaram

Siv Sundaram, P.E.
Environmental Programs Division Engineer

The Oklahoma Department of Transportation (ODOT) ensures that no person or groups of persons shall, on the grounds of race, color, sex, religion, national origin, age, disability, retaliation or genetic information, be excluded from participation in, be denied the benefits of, or be otherwise subjected to discrimination under any and all programs, services, or activities administered by ODOT, its recipients, sub-recipients, and contractors. To request an accommodation please contact the ADA Coordinator at 405-521-4140 or the Oklahoma Relay Service at 1-800-722-0353, no later than 72 hours before any scheduled event. If you have any ADA or Title VI questions email ODOT-ada-titlevi@odot.org.

“The mission of the Oklahoma Department of Transportation is to provide a safe, economical, and effective transportation network for the people, commerce and communities of Oklahoma.”

Project Background

The Oklahoma Department of Transportation (ODOT), in cooperation with the Federal Highway Administration (FHWA), is re-evaluating the environmental document for this segment of SH-28 from just west of the US-69/SH-28 intersection in Adair, and extending east approximately 13 miles to SH82/SH28 intersection in Langley, Mayes County, Oklahoma. An Environmental Assessment was completed in July of 2010. Two projects have been completed since then, which include bridge replacements over Rock Creek and Big Cabin Creek. The next project in the progression is to improve the existing two-lane facility and widen to four lanes through Adair, Pensacola and to Langley. This segment of SH-28 is a two-lane paved highway with 12-foot wide driving lanes and 4-foot wide shoulders. The current traffic volume from Adair to Pensacola is 6,800 vehicles per day (vpd), and is expected to increase to 9,795 vpd by 2040. The current traffic volume from Pensacola to Langley is 4,600 vpd, and is expected to increase to 6,625 vpd by 2040. The purpose of this project was and still is to improve safety.

Project Description

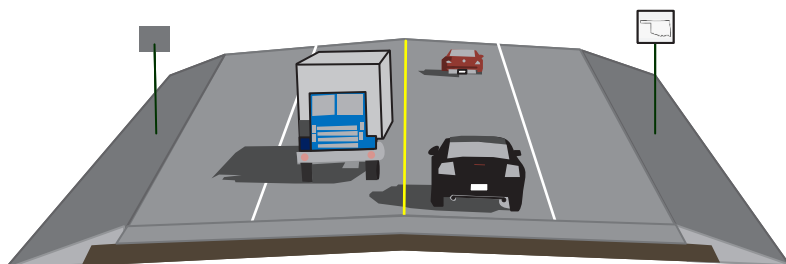
ODOT is updating design plans for improving this segment of SH-28 while taking into consideration the cost of construction, right-of-way and utilities impacts, and environmental constraints. To increase safety, ODOT proposes to improve driving surfaces, reconfigure skewed driveways and entrances, realign county road intersections, widen shoulders, and extend and/or replace roadway structures and the reinforced concrete box bridges. The rural portions of SH-28 will be widened to create two 12-foot wide paved driving lanes with 10-foot wide paved shoulders on existing alignment or on offset north of south alignment. In the town of Adair, the road will be widened to create a curb and gutter section with four 12-foot wide driving lanes, and dedicated left turn lanes at Harley Hughes Ave. Americans with Disabilities Act (ADA) compliant sidewalks will also be added. Through the community of Pensacola, the roadway will transition to a curb and gutter section with four 12-foot wide driving lanes through the center of town, and then return to an open-section two lane facility extending east towards Langley. The SH-82/SH-28 junction in Langley will be improved. These proposed improvements are consistent with the original Environmental Assessment scope.

The highway will remain open during construction, and access to residences, businesses and the school will be maintained throughout the project.

Project Location

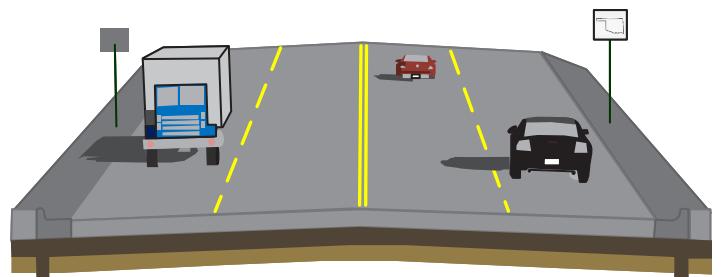


Project Typical Sections



2-Lane Typical Roadway Section

Typical includes: two 12-foot wide driving lanes;
10-foot wide shoulders



4-Lane Typical Roadway Section

Typical includes: curb-and-gutter section with two 12-foot
wide driving lanes

OTHER SH-28 PROJECTS



- SH-28 Improvements “West of US-69”(JP 28891(04)) Project: from just east of the I-44/SH-28 interchange, extending east approximately 5.5 Miles to Adair, Mayes County

PROJECT INFORMATION SUMMARY

- Right-of-Way & Utility Relocation anticipated to start in: **2020**
- Construction anticipated to start in: **2025**
- Current Annual Average Daily Traffic (AADT) in year 2019 on SH-28 from Adair to Pensacola: **6,800 Vehicles a day**
- Current Annual Average Daily Traffic (AADT) in year 2019 on SH-28 from Pensacola to Langley: **4,600 Vehicles a day**
- Future Estimated AADT by year 2040 on SH-28 from Adair to Pensacola: **9,795 Vehicles a day**
- Future Estimated AADT by year 2040 on SH-28 from Pensacola to Langley: **6,625 Vehicles a day**
- Highway will remain open to traffic at all times during construction

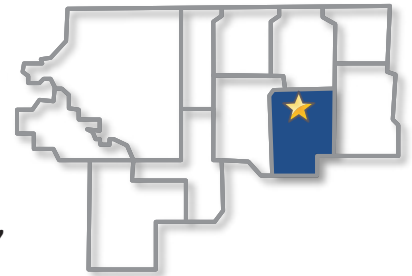
DISTRICT 8 ENGINEER: RANDLE WHITE, P.E.

*Totals DO NOT include Toll Roads

**Totals DO NOT include County Bridges

Total Road Miles*: 1,661.84 **Total Interstate Miles*:** 39.40 **Total Bridges**:** 1,100

Counties: Craig, Creek, Delaware, **Mayes**, Nowata, Osage, Ottawa, Pawnee, Rogers, Tulsa, Washington



PLEASE PROVIDE YOUR COMMENTS BY 10/21/2020

For more information about the project, contact:

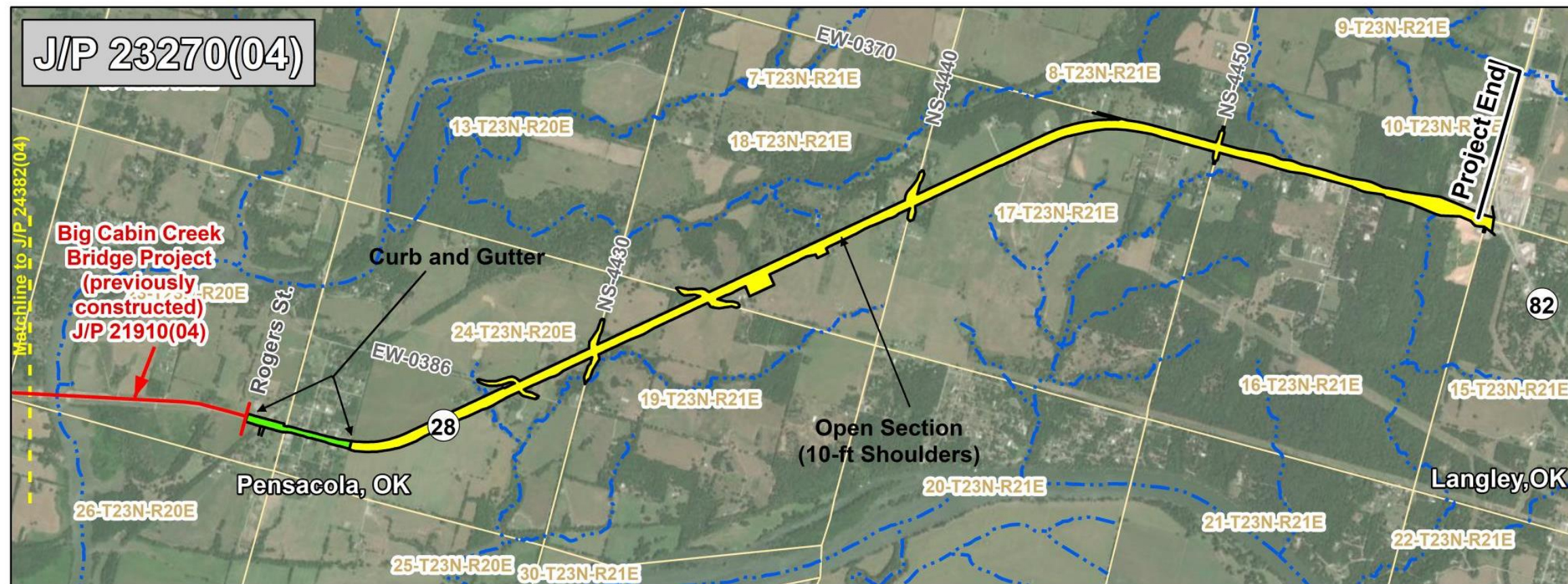
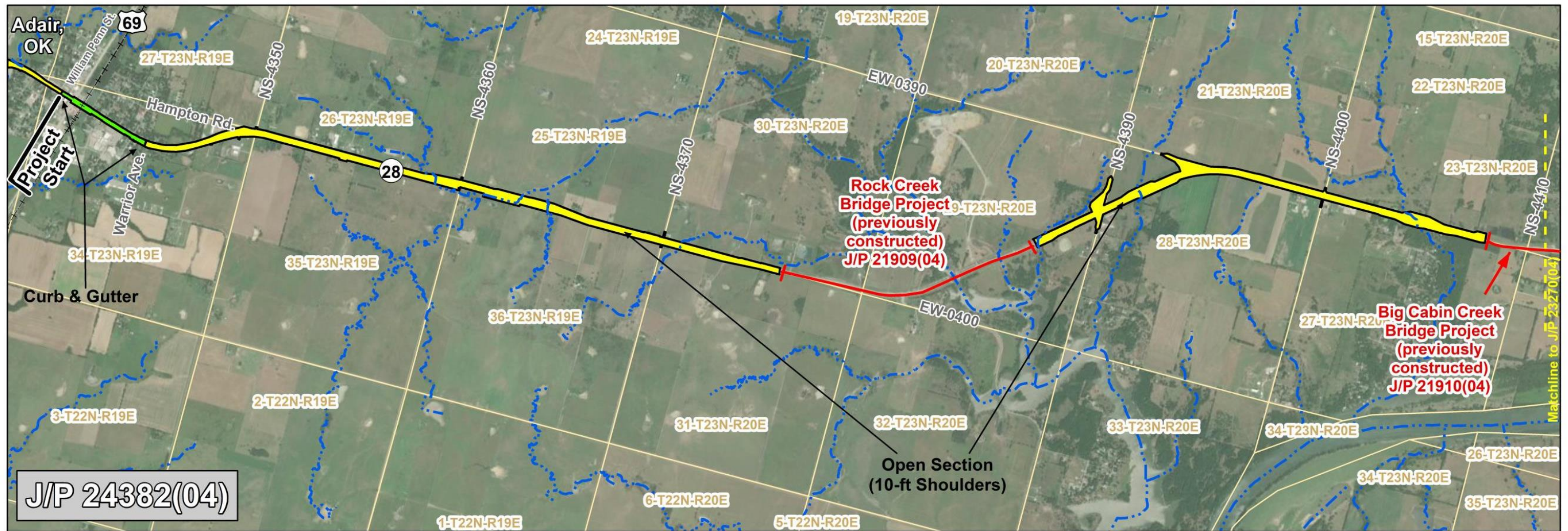
(405) 521-3050

or

environment@odot.org

<http://www.odot.org/publicmeetings>





Legend

- Project Extent
- Open Section (10-ft Shoulders)
- Curb & Gutter
- Mapped Streams
- Sections
- Railroad
- - - Matchline

0 0.15 0.3 0.6 0.9 1.2 Miles

East of US-69 Project
 SH-28 Improvements from just west of US-69/SH-28 in Adair, Ext east to SH-82/SH-28 in Langley J/P 23270(04) & J/P 24382(04)