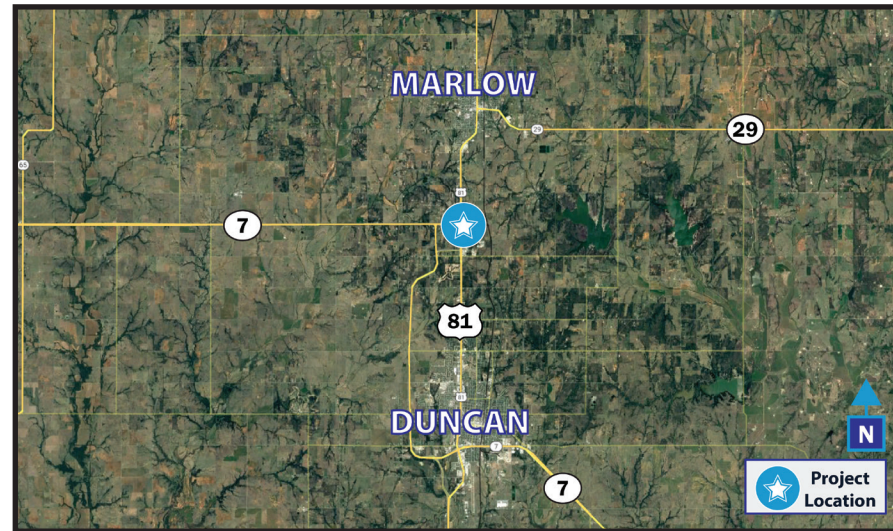


PROJECT LOCATION



PROJECT INFORMATION SUMMARY

Traffic Information

- **AADT US-81 (2026):** 16,730
- **AAADT US-81 (2046):** 21,680
- **Right-of-Way & Utility Location Start:** 2023 (if warranted)
- **Construction Start:** 2026
- **AAADT SH-7 (2026):** 7,180
- **AAADT SH-7 (2046):** 9,320

* Schedule is dependent on funding and subject to change.

DISTRICT 7 ENGINEER: JAY EARP, P.E.

*Totals DO NOT include Toll Roads

***Total Road Miles**
1,423.98

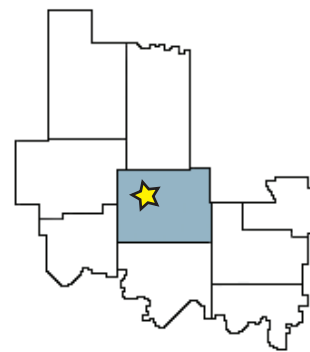
***Total Interstate Miles**
95.32

**Totals DO NOT include County Bridges

****Total Bridges**
792

COUNTIES

Caddo, Carter, Comanche, Cotton, Grady, Jefferson, Love, Murray, **Stephens**




PLEASE PROVIDE YOUR COMMENTS BY **DECEMBER 1, 2021**

For more information about the project:

(405) 325-3269
environment@odot.org

<http://www.odot.org/publicmeetings>

VIRTUAL OPEN HOUSE

NOV. 16, 2021 - DEC. 1, 2021

US-81 Intersection Improvement at the US 81/SH-7 Junction Between Marlow and Duncan
Stephens County; JP 33761(04)

www.odot.org/US81SH7Junction



VIRTUAL OPEN HOUSE

The Oklahoma Department of Transportation, in cooperation with the Federal Highway Administration (FHWA), will host a virtual open house to introduce proposed improvements to the intersection of US-81 and SH-7 between Marlow and Duncan in Stephens County, Oklahoma. This open house will present the proposed project alternatives and allow the public to submit input and ask questions. This will be a web-based format (no in-person meeting). The information will be available beginning November 16, 2021, and comments are requested by December 1, 2021.



Purpose

The purpose of the Virtual Open House is to present information about the proposed improvements to the intersection of US-81 and SH-7 and obtain input from the public on existing conditions and proposed alternatives.



Join

Visit www.odot.org/US81SH7Junction to view project information, view an interactive project map, and submit comments.



OKLAHOMA
Transportation

November 12, 2021

RE: US-81 Intersection Improvement at the US-81/SH-7 Junction Between Marlow and Duncan; State Job Piece Number JP 33761(04), Stephens County.

Dear Stakeholders, Property Owners and Utility Owners:

The Oklahoma Department of Transportation (ODOT), in cooperation with the Federal Highway Administration (FHWA) is proposing to improve the intersection of US-81 and SH-7 between Marlow and Duncan in Stephens County. SH-7 has heavy eastbound left turning truck traffic and a lane terminates at Medcalf Street. The intersection is much higher than Medcalf Street, which can cause sight distance issues for drivers. The purpose of the project is to improve intersection safety and operations.

The preliminary alternatives are being evaluated based on traffic considerations, safety, land use considerations, drainage impacts, utility impacts, and cost. Three intersection alternatives are presented for feedback as part of this meeting.

ODOT will host a virtual open house from **November 16 to December 1, 2021**, to present information about the project and ask the public to submit input. The purpose of the open house is to inform the public about the proposed improvements under consideration for the intersection of US-81 and SH-7 and to provide an opportunity to comment. This pamphlet contains additional information about the virtual open house. From November 16 to December 1, 2021, project information may be viewed at www.odot.org/US81SH7Junction. After the virtual open house, project information may be viewed at www.odot.org/PublicMeetings.

If you are leasing this property, please notify your lessee of this virtual public open house. Should you have any questions regarding this project, please email environment@odot.org, or call 405-325-3269 and leave a detailed message.

Respectfully,



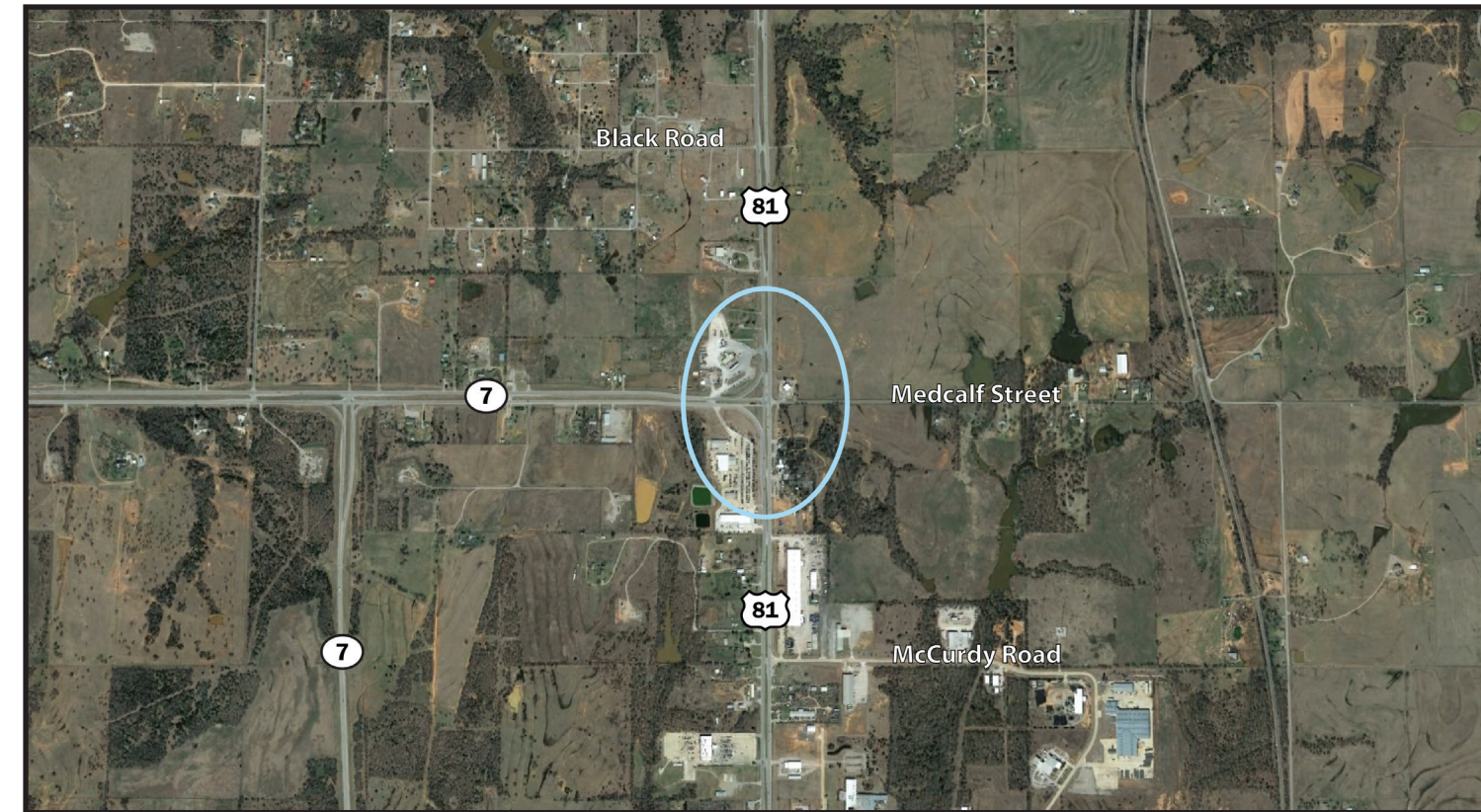
Jay Earp, P.E.
Field District Seven Engineer

The Oklahoma Department of Transportation (ODOT) ensures that no person or groups of persons shall, on the grounds of race, color, sex, religion, national origin, age, disability, retaliation, or genetic information, be excluded from participation in, be denied the benefits of, or be otherwise subjected to discrimination under any and all programs, services, or activities administered by ODOT, its recipients, sub-recipients, and contractors. To request an accommodation please contact the ADA Coordinator at 405-521-4140 or the Oklahoma Relay Service at 1-800-722-0353 no later than 72 hours before any scheduled event. If you have any ADA or Title VI questions email ODOT-ada-titlevi@odot.org.

"The mission of the Oklahoma Department of Transportation is to provide a safe, economical, and effective transportation network for the people, commerce and communities of Oklahoma."

AN EQUAL OPPORTUNITY EMPLOYER

Intersection Location



Project Background

The existing SH-7 has heavy eastbound left turning truck traffic and a lane that terminates at Medcalf Street. The intersection is much higher in elevation than Medcalf Street, which can cause sight distance issues for drivers.

The purpose of the project is to improve the safety and operations of the intersection.

Opportunities to improve safety include managing high speeds, promoting traffic calming and lane continuity. Operational improvements include planning for future volumes and improving vehicle turning movements.

Project Description

Three intersection alternatives are being evaluated as part of this project. These alternatives are:

Alternative A - Would provide a Signalized Intersection. New signal equipment would be installed with advanced signage providing notification of the signal ahead. No new right-of-way would be necessary.

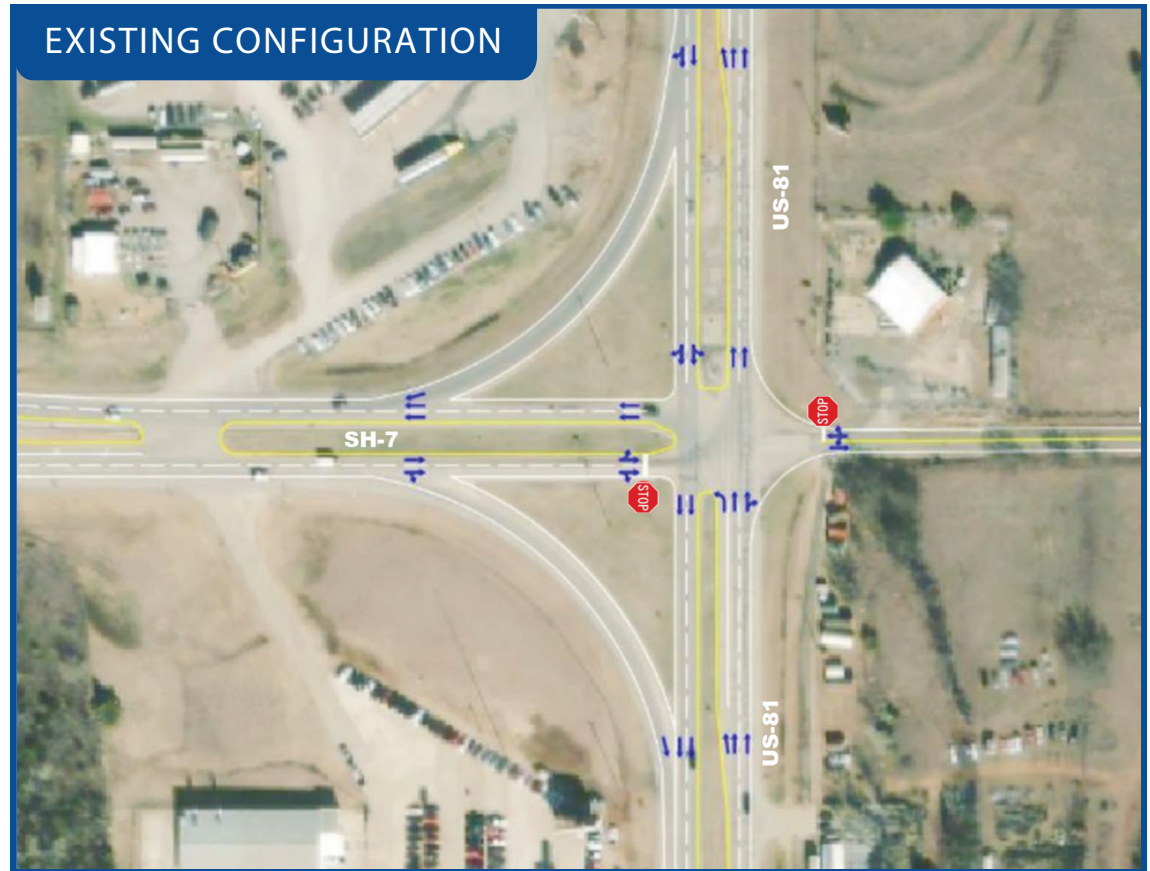
Alternative B - Proposes a Displaced Eastbound to Northbound Left Turn and stop control for eastbound and westbound traffic. This alternative would require additional right-of-way.

Alternative C - Multi-lane Roundabout. This alternative would reconstruct the roadway and require additional right-of-way.

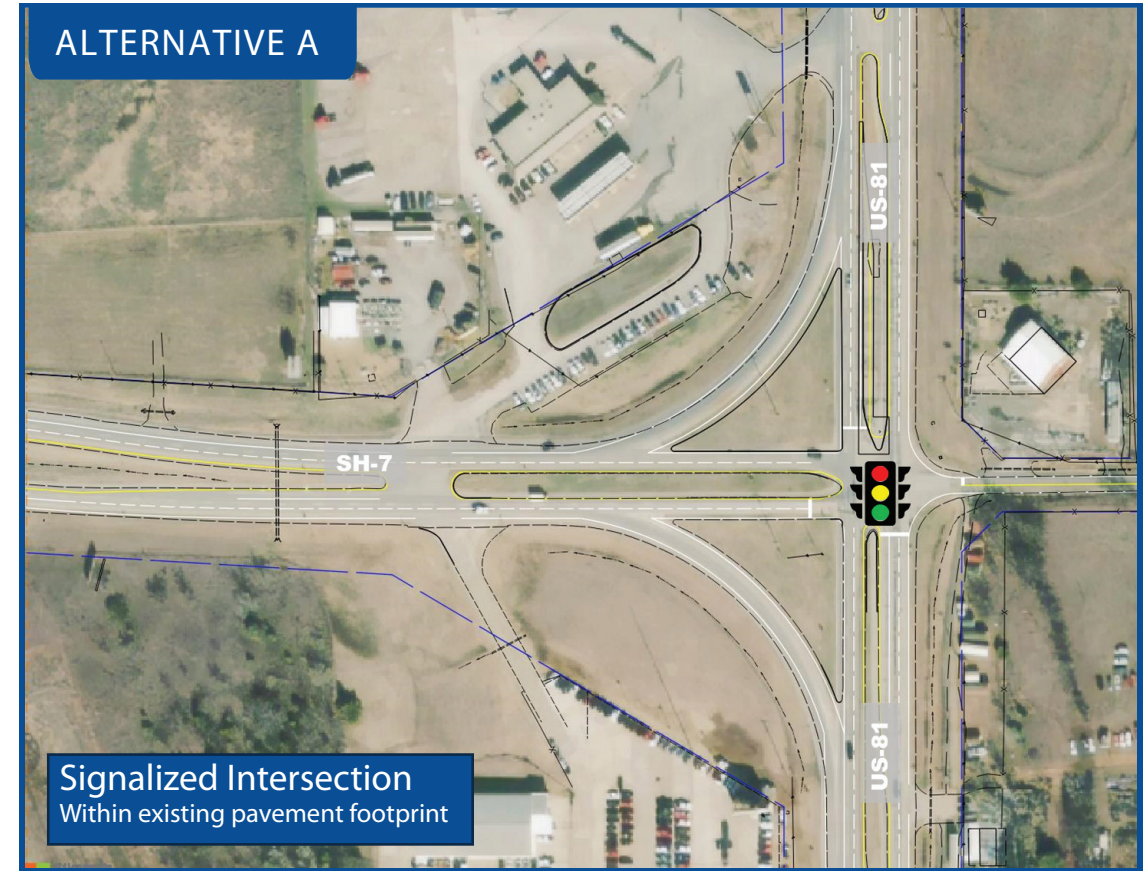
Representation of the alternatives for the US-81/SH-7 Junction Stephens County, JP 33761(04)



OKLAHOMA
Transportation



EXISTING CONFIGURATION



ALTERNATIVE A

Signalized Intersection
Within existing pavement footprint

LEGEND

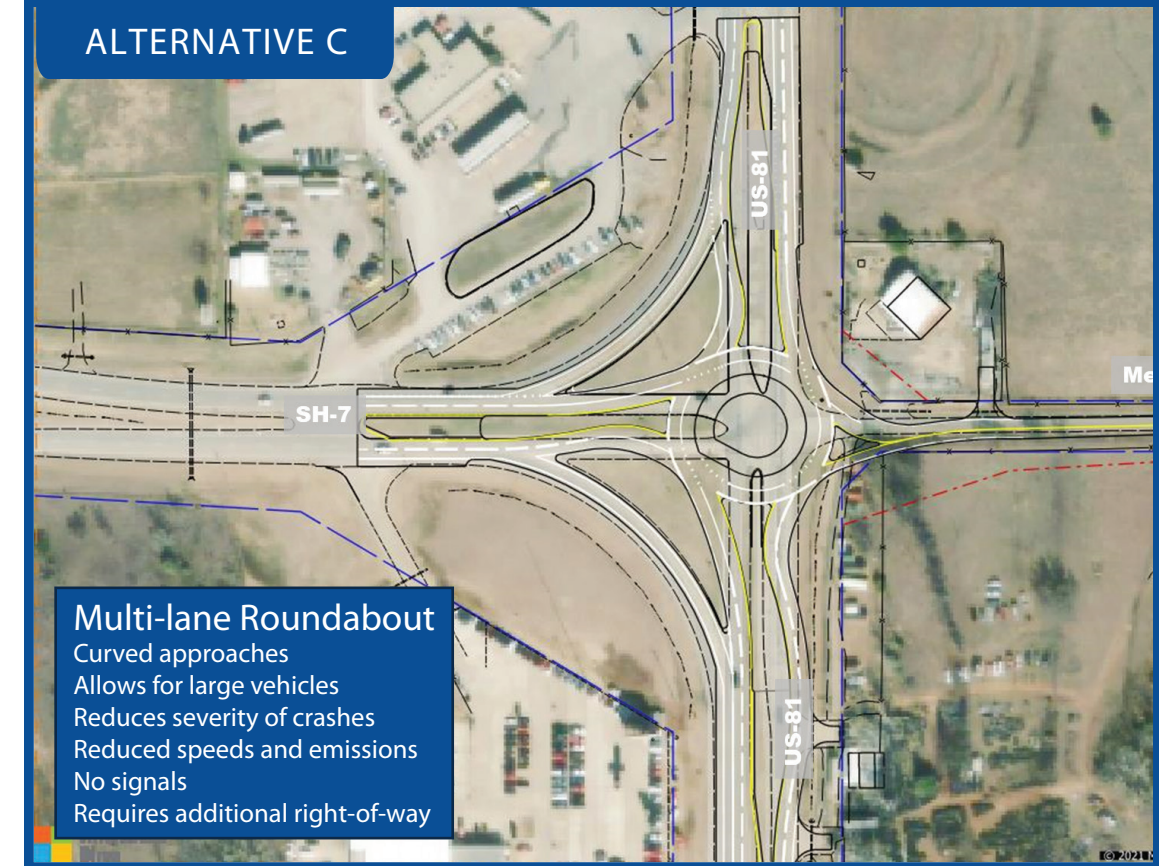
- EXISTING RIGHT-OF-WAY
- ESTIMATED RIGHT-OF-WAY
- LANE SEPARATION



ALTERNATIVE B

Displaced Eastbound Left Turn Lane
Stop signs for east- & westbound
Decreases # of lanes to cross
Median crossings to make U-turns
Widened U-turn for large trucks

Widened U-turn



ALTERNATIVE C

Multi-lane Roundabout
Curved approaches
Allows for large vehicles
Reduces severity of crashes
Reduced speeds and emissions
No signals
Requires additional right-of-way