




**VIRTUAL
OPEN HOUSE**

January 12, 2022- January 26, 2022

**US-270 from MacArthur St. south 2.1 miles to Kickapoo Spur Interchange, extending 0.3 miles south.
Pottawatomie County JP 31872(04)**


www.odot.org/US270Shawnee

VIRTUAL OPEN HOUSE




The Oklahoma Department of Transportation (ODOT) will host a virtual open house to present the latest information on the proposed improvements to US-270 from MacArthur Street south 2.1 miles to the Kickapoo Spur Interchange, extending 0.3 miles south to the bridges over the Union Pacific Railroad, in Pottawatomie County. This meeting will present the most recent design for the project and allow the public to submit input. Due to concerns over the spread of COVID-19, this will be a web-based format (no in-person meeting). The information will be available beginning January 12, 2022 and comments are requested by January 26, 2022.

Purpose



The purpose of the project is to reconstruct the pavement of US-270 to increase the longevity of the pavement and reconstruct the ramps at the Kickapoo Spur Interchange to improve the level of safety and operations of the interchange. The reconstruction of the pavement is needed because the condition of the existing pavement has deteriorated to an unsatisfactory level. The current average daily traffic (ADT) is 16,240 vehicles per day and is projected to increase to 22,740 vehicles per day by 2040.



To improve safety and traffic flow, ODOT is developing design plans for improving this segment of US-270 while taking into consideration the cost of construction, right-of-way and utilities impacts, and environmental constraints. The project will reconstruct the pavement of US-270 in Pottawatomie County from MacArthur Street south 2.1 miles to the Kickapoo Spur Interchange, extending 0.3 miles south to the bridges over the Union Pacific Railroad. The cable median barrier will be removed and reset in the central median. The Kickapoo Spur interchange will be modified to a traditional diamond interchange by realigning the two existing southbound on and off loop ramps. The northbound on and off ramps will be reconstructed to improve the pavement.

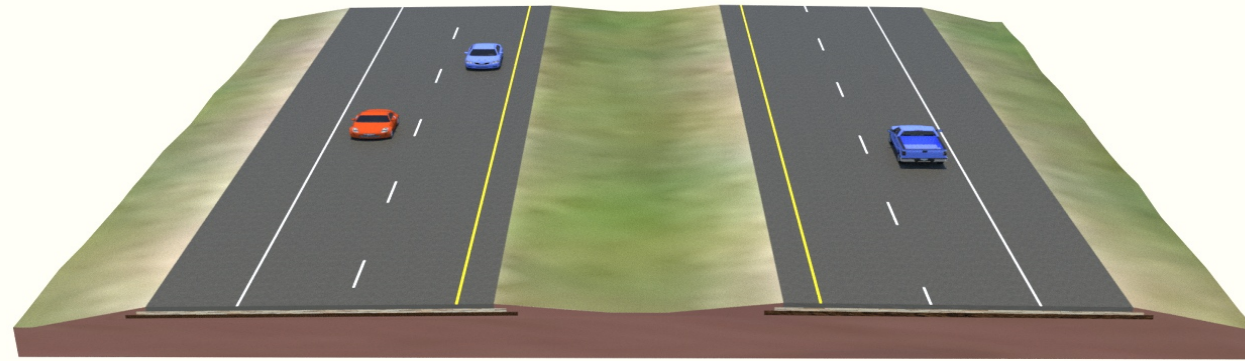
Join

www.odot.org/US270Shawnee



**OKLAHOMA
Transportation**

PROPOSED FOUR-LANE TYPICAL SECTION



PROJECT INFORMATION SUMMARY

- Total Programmed Estimated Cost of this project: **\$16.4 million**
- Right-of-Way & Utility Relocation programmed to start in: **2022**
- Construction programmed to start in: **2024**
- Current Annual Average Daily Traffic (AADT) in year 2020: **16,240 Vehicles per day**
- Future Estimated AADT by year 2040: **22,740 Vehicles per day**
- During construction, one lane of traffic will be maintained in each direction of US-270. The Kickapoo Spur Interchange is expected to experience short durations of closures; Leo Street will remain open to traffic.

*Totals DO NOT include Toll Roads

DISTRICT 3 ENGINEER: RON BROWN, P.E.

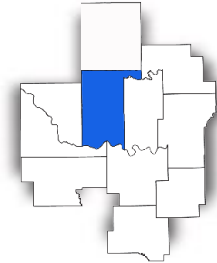
**Totals DO NOT include County Bridges

***Total Road Miles:**
1,791.65

***Total Interstate Miles:**
163.67

****Total Bridges:**
933

Counties: Cleveland, Coal, Garvin, Hughes, Johnston, Lincoln, McClain, Okfuskee, Pontotoc, Pottawatomie, Seminole



PLEASE PROVIDE YOUR COMMENTS BY JANUARY 26, 2022

For more information about the project and public participation

405-325-3269
environment@odot.org

www.odot.org/US270Shawnee



OKLAHOMA
Transportation

Virtual Open House

January 12 - January 26, 2022

US-270 from MacArthur St. south 2.1 miles to Kickapoo Spur Interchange, extending 0.3 miles south, in Pottawatomie County, JP 31872(04)

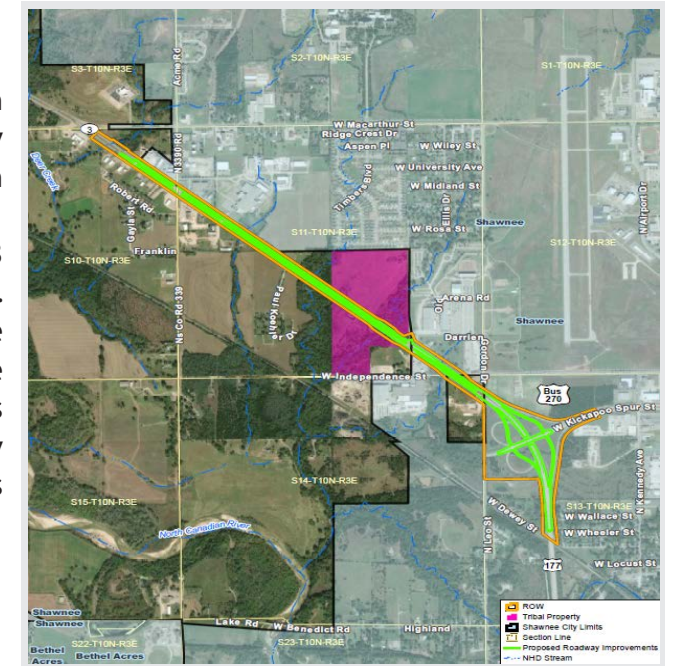
Project Descriptions & Solicitation of Public Input

Purpose of Virtual Open House

The purpose of the Virtual Open House is to present the proposed project and solicit input from the public regarding construction activities, sequencing, and scheduling.

Project Background

The Oklahoma Department of Transportation (ODOT), in cooperation with the Federal Highway Administration (FHWA) proposes to improve US-270 in Pottawatomie County from MacArthur Street south 2.1 miles to the Kickapoo Spur Interchange, extending 0.3 miles south to the bridges over the Union Pacific Railroad. The existing lanes are 12 feet wide with 10 feet wide outside shoulders and 4 feet wide inside shoulders. The pavement is in poor condition. There are three bridges along the project corridor. Currently, the average daily traffic (ADT) is 16,240 vehicles per day, and the ADT is projected to increase to 22,740 vehicles per day by 2040.



Project Purpose and Need

The purpose of the project is to reconstruct the pavement of US-270 to increase the longevity of the pavement and reconstruct the ramps at the Kickapoo Spur Interchange to improve the level of safety and operations of the interchange. The reconstruction of the pavement is needed because the condition of the existing pavement has deteriorated to an unsatisfactory level.

Project Description

ODOT is developing design plans for improving this segment of US-270 while taking into consideration the cost of construction, right-of-way and utilities impacts, and environmental constraints. The project will reconstruct the pavement from MacArthur Street south 2.1 miles to the Kickapoo Spur Interchange, extending 0.3 miles south to the bridges over the Union Pacific Railroad. The Kickapoo Spur Interchange will be modified to a traditional diamond interchange by removing the two existing southbound on and off loop ramps. The northbound on and off ramps will be reconstructed to improve the pavement.

During construction, one lane of traffic will be maintained in each direction of US-270. The Kickapoo Spur Interchange is expected to experience short durations of closures, Leo Street will remain open to traffic

These improvements will be constructed as one single project that is included in ODOT's eight-year construction program. Construction is programmed to start in 2024.

January 10, 2021

RE: Solicitation for Virtual Open House for grade, drain, and surface to US-270 from MacArthur St. south 2.1 miles to Kickapoo Spur Interchange, extending 0.3 miles south, in Pottawatomie County, JP 31872(04)

Dear Stakeholders, Property Owners, and Utility Owners:

The Oklahoma Department of Transportation (ODOT), in cooperation with the Federal Highway Administration (FHWA), is proposing replacement of the existing pavement section (including shoulders) and significant design changes to the Kickapoo Spur Interchange ramps. Please see the attached project location map. The purpose of the project is to reconstruct the pavement of US-270 to increase the longevity of the pavement and to improve the level of safety and operations throughout the corridor. The reconstruction of the pavement of US-270 is needed because the condition of the existing pavement has deteriorated to an unsatisfactory level and the current average daily traffic (ADT) is 16,240 vehicles per day and is projected to increase to 22,740 vehicles per day by 2040. Please see the enclosed pamphlet and figures which depict the areas associated with the improvements.

To improve safety and traffic flow, ODOT is developing design plans for improving this segment of US-270 while taking into consideration the cost of construction, right-of-way and utilities impacts, and environmental constraints. The project will reconstruct the pavement of US-270 from MacArthur Street south 2.1 miles to the Kickapoo Spur Interchange, extending 0.3 miles south to the bridges over the Union Pacific Railroad. The cable median barrier will be removed and reset in the central median. The Kickapoo Spur Interchange will be modified to a traditional diamond interchange by removing the two existing southbound on and off loop ramps and replacing them with modified taper-style ramps.

Due to ongoing concerns about COVID-19, a Virtual Open House will be held from **January 12 to January 26, 2022** at www.odot.org/US270Shawnee. The virtual public open house will present the most recent design for the project and allow the public to submit input. The purpose of the open house is to present information about the project and obtain input from the public to further assist in the identification of critical social, economic and environmental effects that may result from the project. Following the meeting, the meeting material can be found at <http://www.odot.org/publicmeetings>.

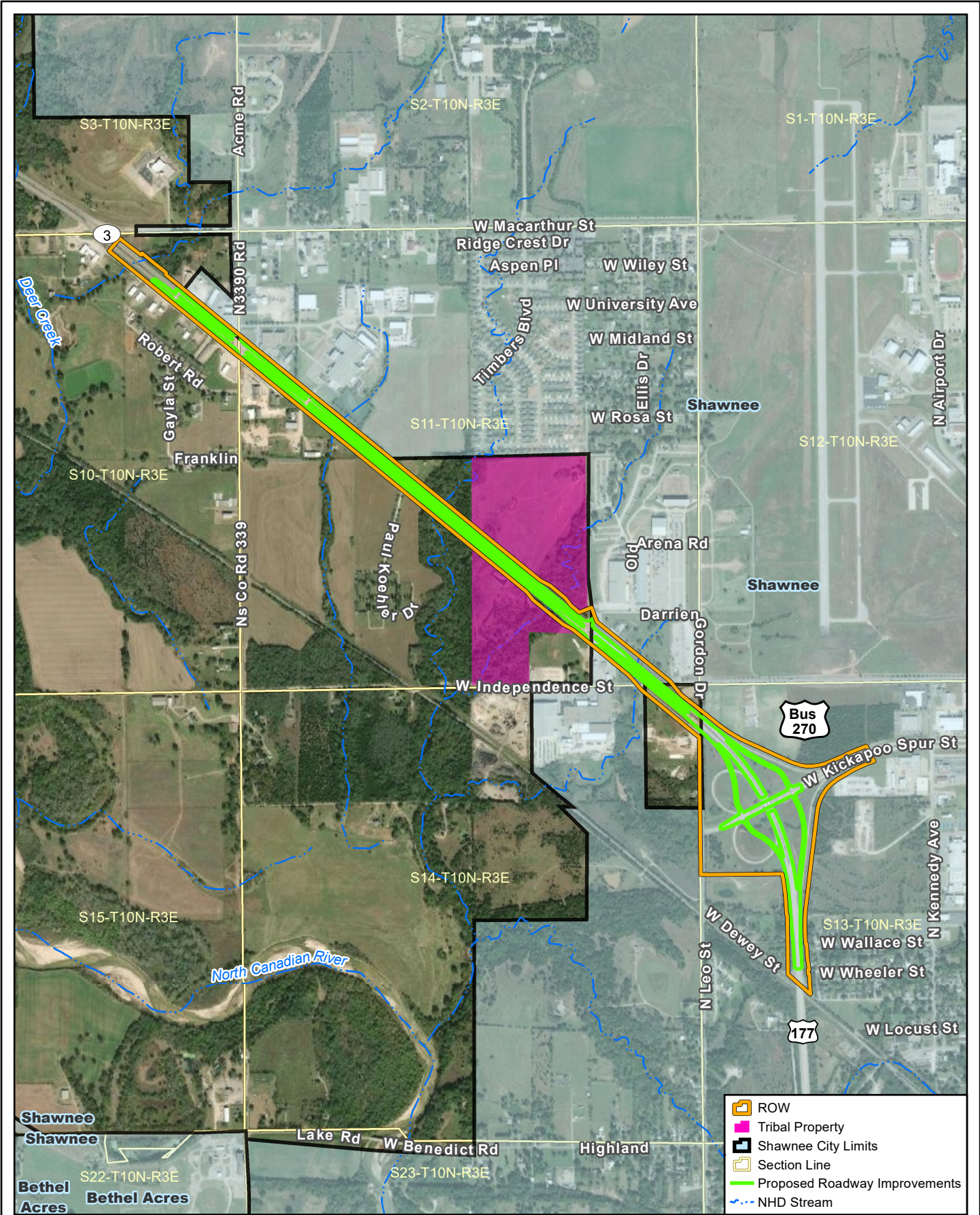
To allow for adequate time for evaluation of your comments, please respond by January 26, 2022. Your written comments may be submitted on the Virtual Open House website (<http://www.odot.org/publicmeetings>) or in writing to the Environmental Programs Division, Oklahoma Department of Transportation, 200 NE 21st Street, Oklahoma City, OK 73105, or e-mail to environment@odot.org.

We sincerely appreciate your cooperation in this matter. Should you have any questions regarding the project, please contact us at 405-325-3269, or e-mail to environment@odot.org.

Respectfully,

Joe Brutsché
Environmental Programs Interim Division Manager

Enclosures: Location Map, Pamphlet, Comment Form



Project Overview

JP 31872(04), Grade, Drain, & Surface on US-270 from MacArthur St. south 2.1 miles to Kickapoo Spur Interchange, extending 0.3 miles south Pottawatomie County, Oklahoma

Data Sources: NHD (2021), BLM (2021)
Aerial Source: Maxar (2019)

		1 inch = 1,500 feet
		Scale: 1:18,000
0	400 Meters	Date: 12/17/2021



US-270 from MacArthur St. south 2.1 miles to Kickapoo Spur Interchange, extending 0.3 miles south

Pottawatomie County, OK

JP 31872(04)

01/12/2022 - 01/26/2022

Thank you for your interest in this project and taking the time to provide us with your written comments. Putting your comments in writing is one of the most effective ways to have your concerns addressed.

PLEASE SUBMIT YOUR COMMENTS BY: 01/26/2022

**Personal information is optional and will be kept confidential*

Name:		Business / Organization:	
Address:		City:	State:
Phone Number:		Email Address:	
Zip Code:			

"I have the following comment(s) or question(s) about the proposed project to improve US-270 in Pottawatomie County, OK."

Comments on this project can be submitted in several ways, including but not limited to:

By US Mail or Dropoff:

ENVIRONMENTAL PROGRAMS DIVISION
OKLAHOMA DEPARTMENT OF TRANSPORTATION
200 N.E. 21ST ST.
Oklahoma City, OK 73105-3204

By Email:

environment@odot.org

On the Web:

www.odot.org/publicmeetings



Please be aware that all comments that you submit on this form are subject to public disclosure under the Oklahoma Public Information Act.

Reset Form	Print Form	Submit by Email
------------	------------	-----------------



Comments Continued

A large, empty rectangular area with a light gray background, intended for entering comments. It is bounded by a thin black line on the top, bottom, and right sides, and shares the top boundary with the header area.