

# **WELCOME**

## **PUBLIC HEARING**

**Sign in** to register your attendance.

**Share** your comments by Friday, May 27, 2022.

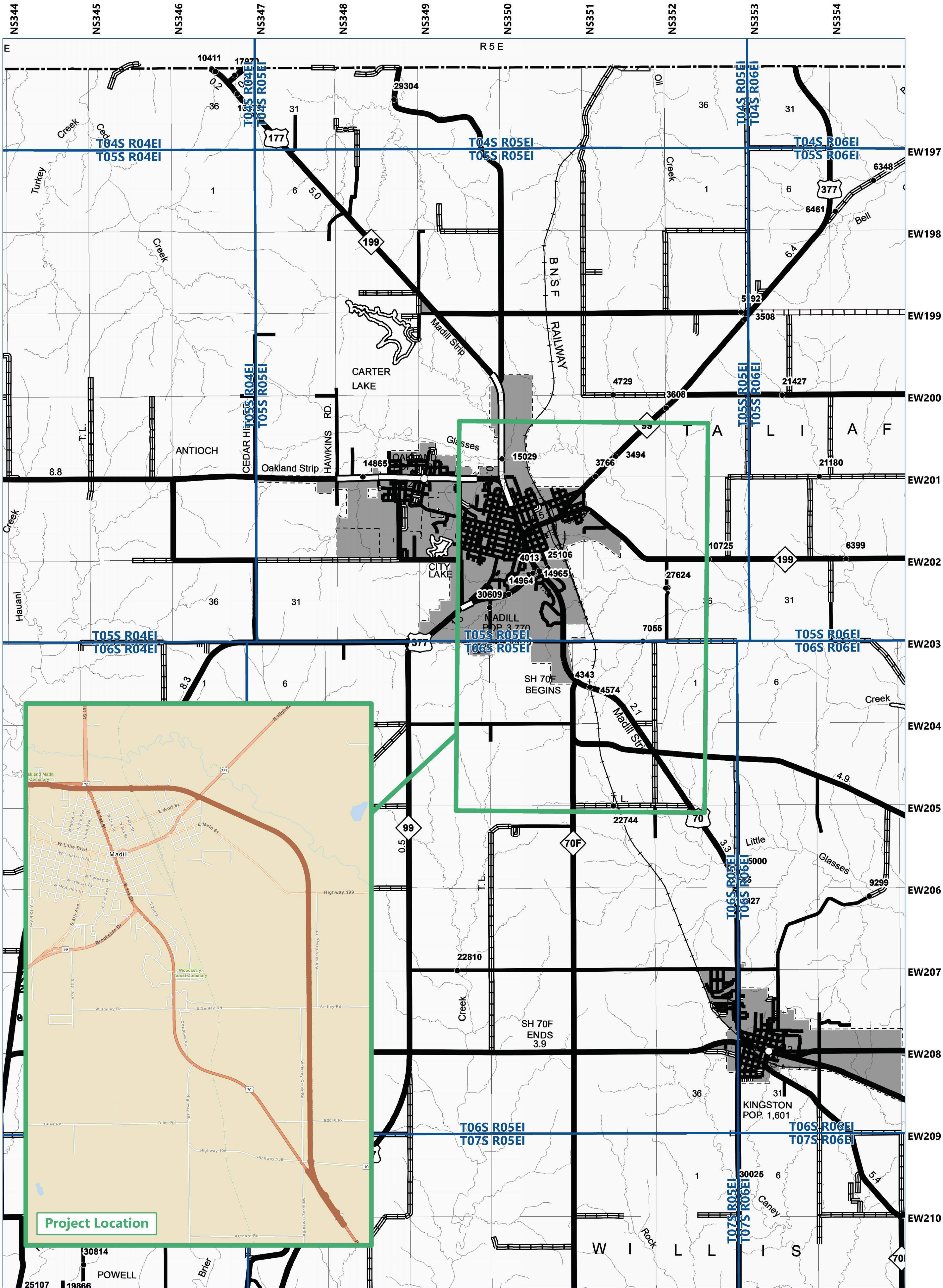


**OKLAHOMA**  
Transportation





# Project Location

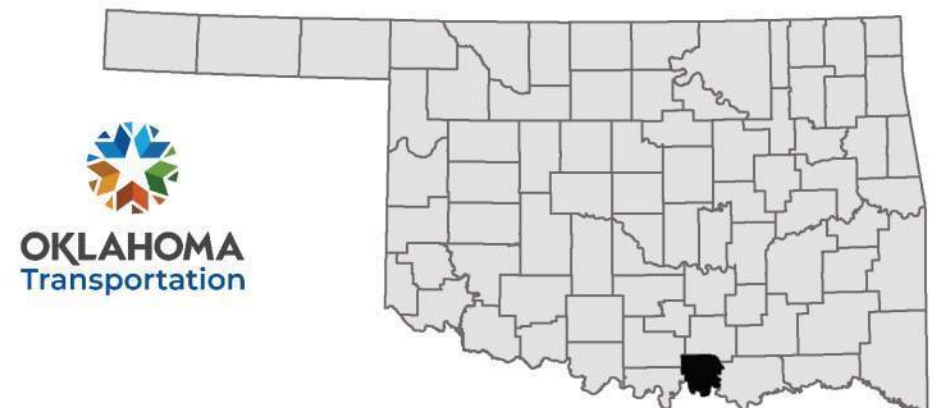


## US-70

Realignment From SH-199,  
East 2.0 Miles & From 2.0 Miles East  
& South of SH-199, South 2.8 Miles

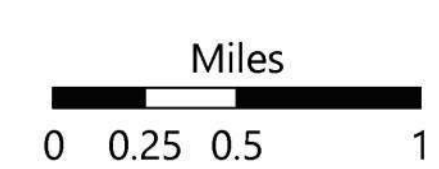
**MARSHALL COUNTY**

JP No. 18835(04) & (09)



- ▭ Project Location
- ▭ Proposed US-70
- ▭ Township & Range Boundary

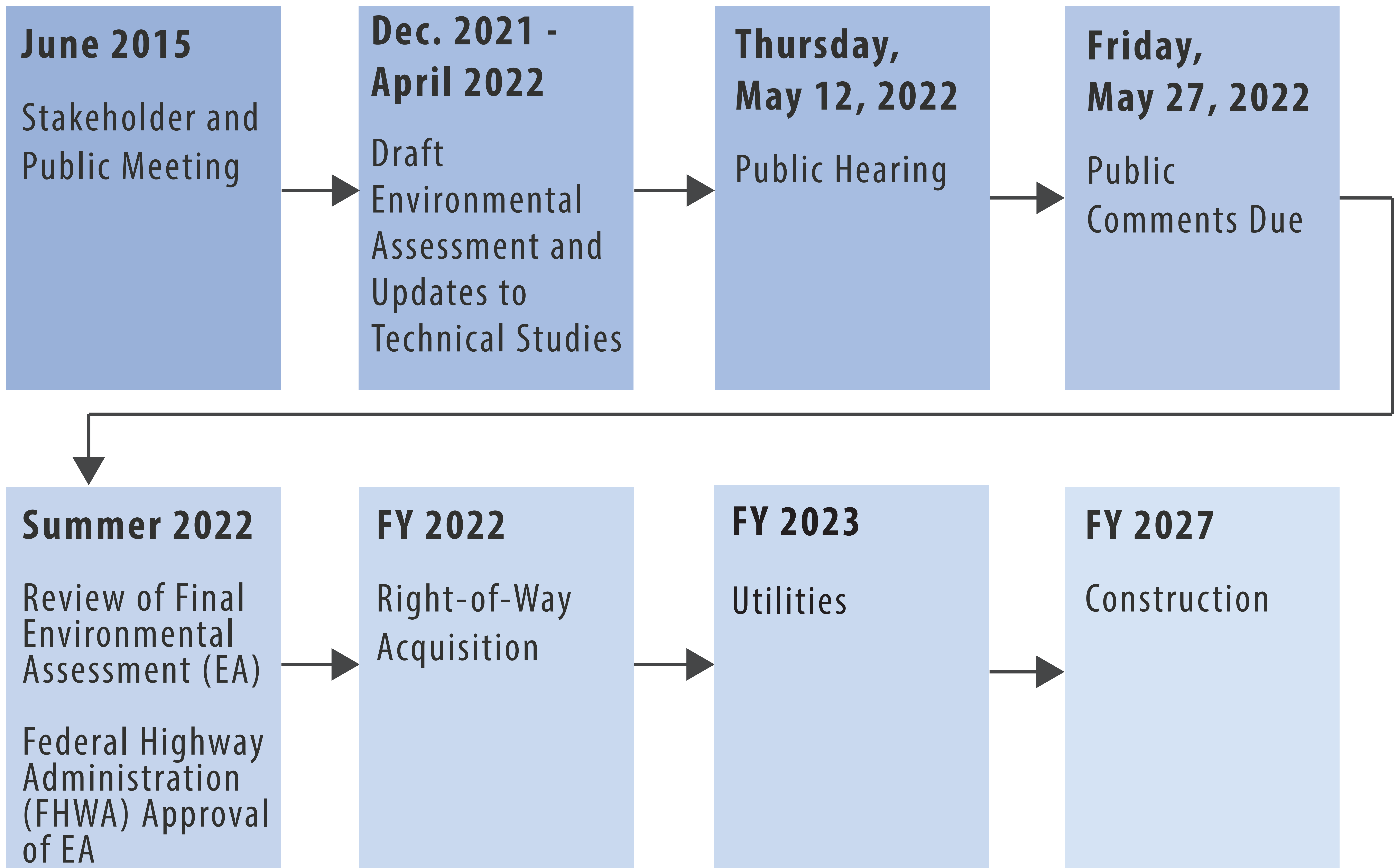
1 inch equals 0.5 mile







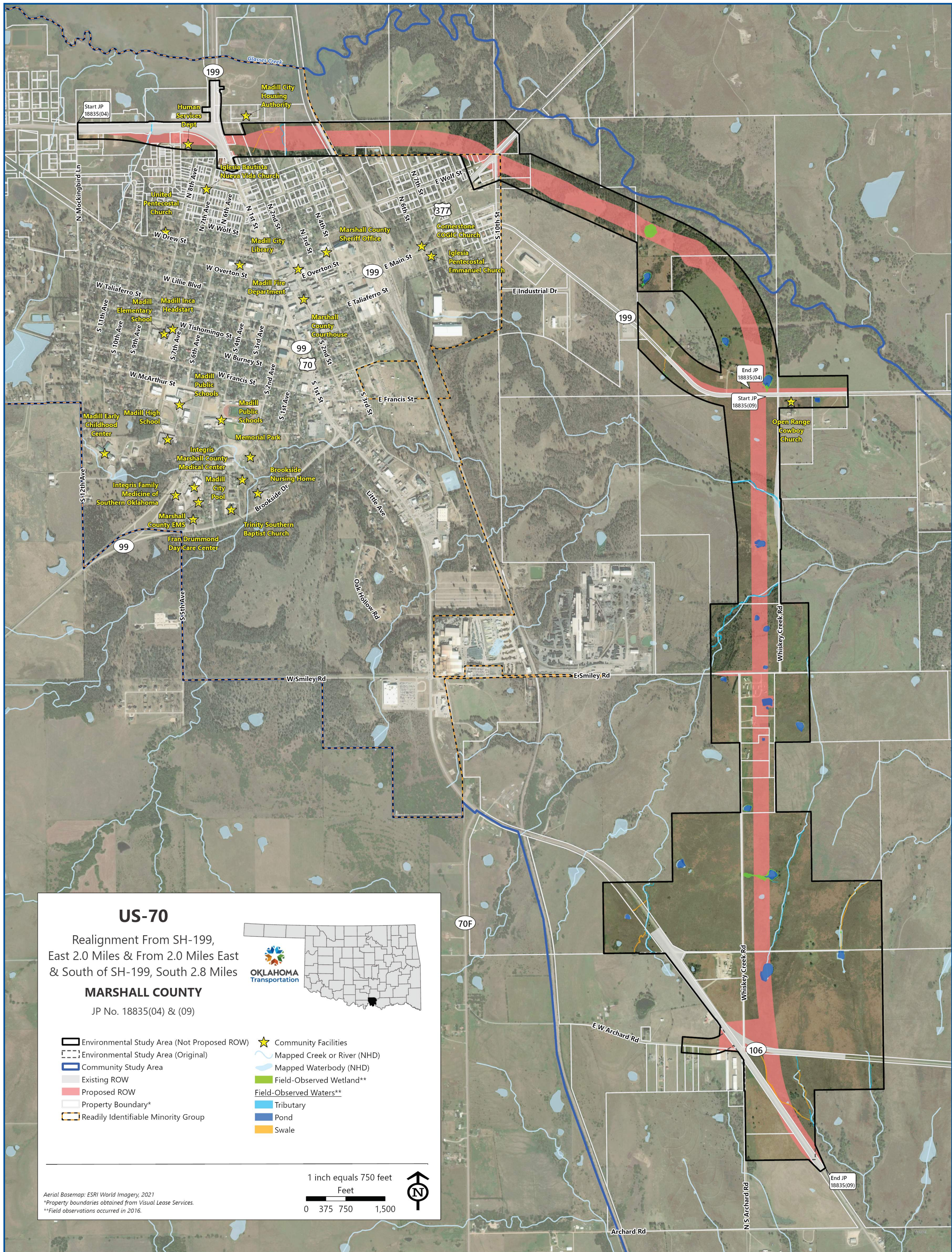
# Environmental Assessment Process







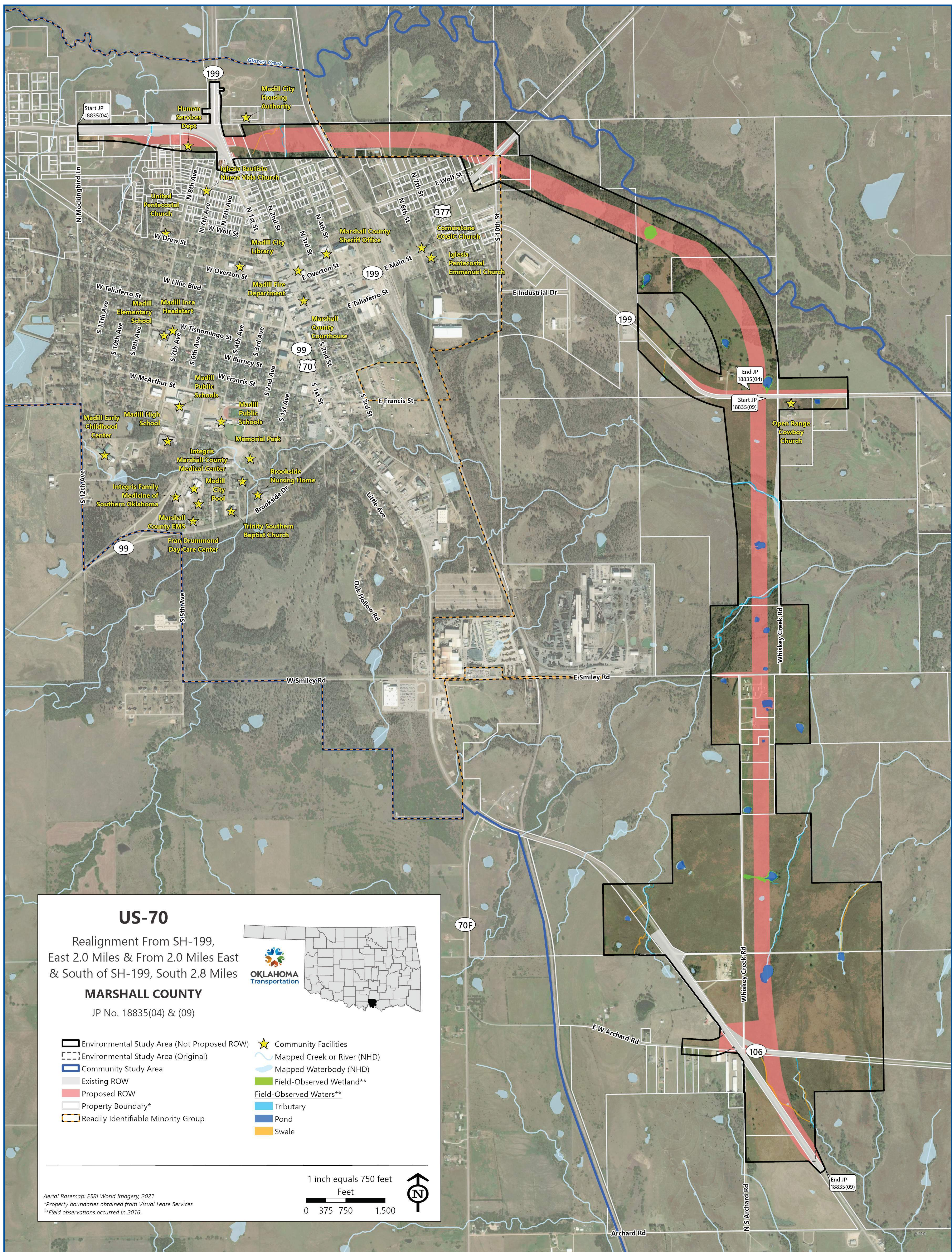
# Project Constraints Map







# Project Constraints Map







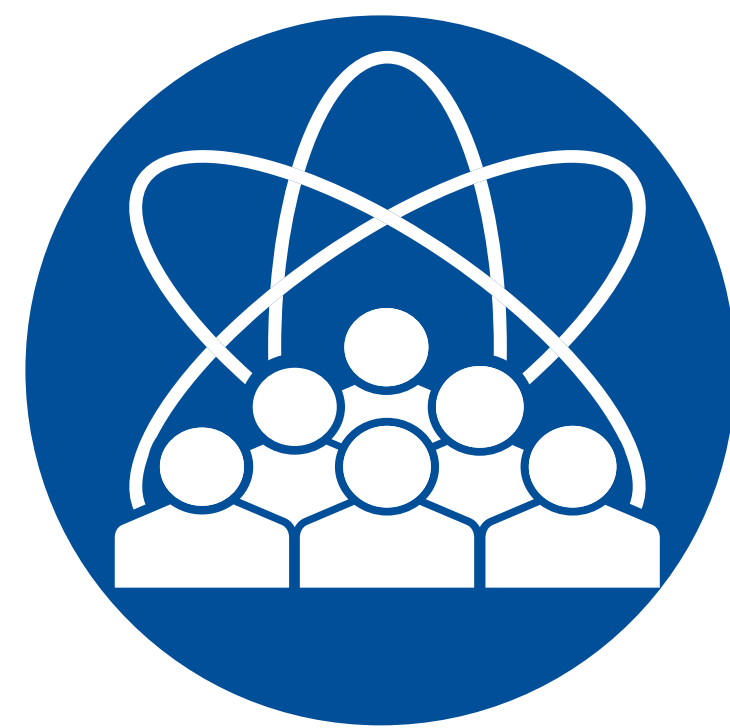
# Environmental Assessment Overview

## *Environmental Review - Impacts Addressed*

The analysis presented in the Environmental Assessment evaluates impacts to the human and natural environment, including:



RELOCATIONS



SOCIAL & ECONOMIC



ENVIRONMENTAL  
JUSTICE



CULTURAL  
RESOURCES



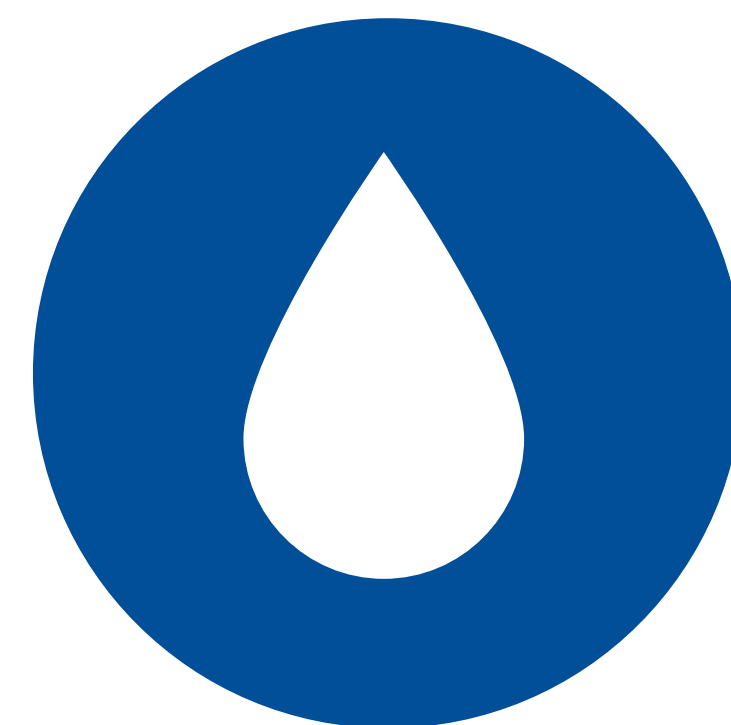
NOISE



SPECIES & HABITAT



JURISDICTIONAL WATERS  
& WETLANDS



WATER QUALITY



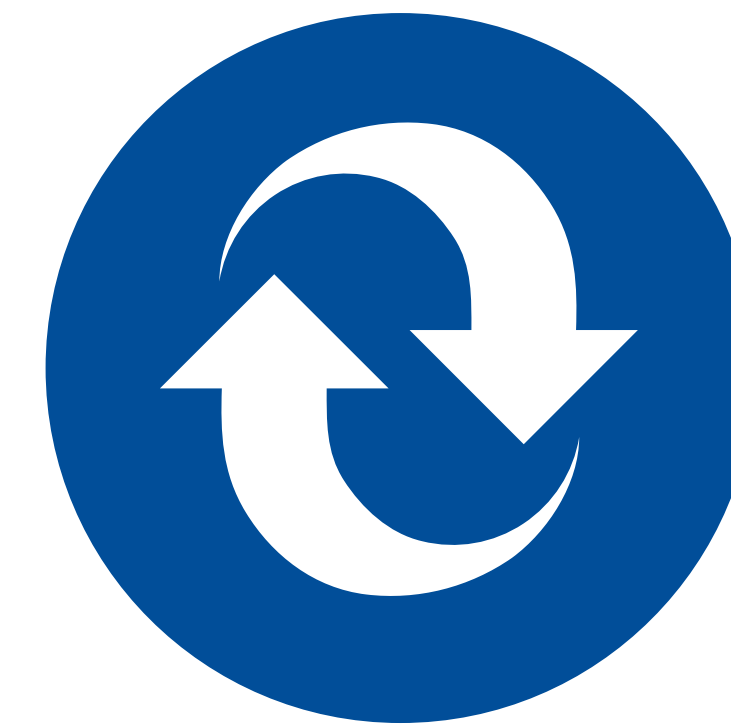
PRIME FARMLAND



FLOODPLAINS



HAZARDOUS  
MATERIALS



TEMPORARY  
CONSTRUCTION IMPACTS



**Right-of-Way**

# **RIGHT-OF-WAY**



## Submit Feedback

# HOW TO COMMENT

To be documented and considered as part of the US-70 Realignment Public Hearing, provide your comments via these methods by **Friday, May, 27, 2022.**



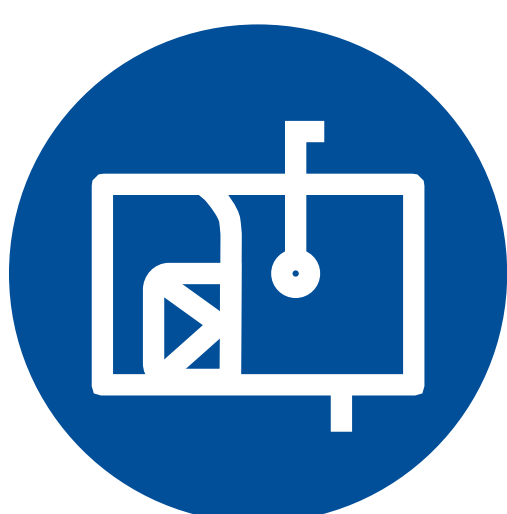
### ***IN PERSON***

Fill out a comment form or make a verbal comment at today's meeting



### ***EMAIL***

[environment@odot.org](mailto:environment@odot.org)



### ***MAIL***

Environmental Programs Division  
Oklahoma Department of Transportation  
200 N.E. 21st St.  
Oklahoma City, OK, 73105



### ***VOICEMAIL***

Leave a voicemail at 405.325.3269





# Proposed Typical Sections

FIVE-LANE  
CURB & GUTTER  
SECTION



FIVE-LANE  
OPEN SECTION



TWO-LANE  
OPEN SECTION  
(INTERIM)







# Roadway Schematic

