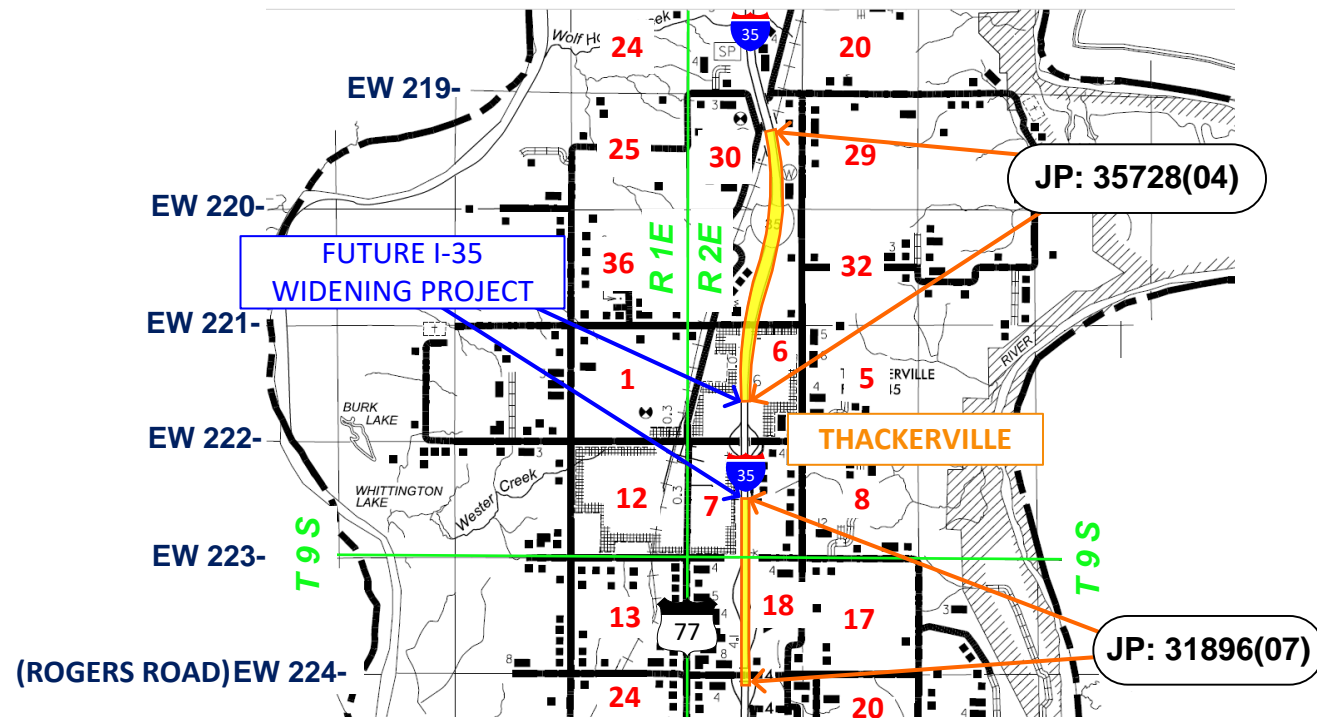


PROJECT LOCATION



PROJECT INFORMATION SUMMARY

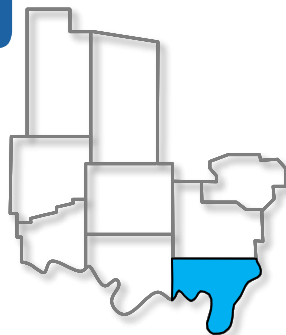
- Construction programmed to start in: 2027
- Current Annual Average Daily Traffic (AADT) in year 2023:
JP: 31896(07): 32,000 Vehicles a day – JP: 35728(04): 32,640 Vehicles a day
- Future Estimated AADT in year 2043:
JP: 31896(07): 51,200 Vehicles a day – JP: 35728(04): 48,501 Vehicles a day
- Two lanes of the highway will remain open to traffic at all times during construction
- Cost to complete construction: JP: 31896(07): \$10 million and JP: 35728(04) – \$11 million

DISTRICT 7 ENGINEER: JAY EARP, P.E.

*Totals DO NOT include Toll Roads
**Totals DO NOT include County Bridges

Total Road Miles*: 1,446.70
Total Interstate Miles*: 99.34
Total Bridges:** 789

Counties: Love



PLEASE PROVIDE YOUR COMMENTS BY SEPTEMBER 12, 2023

For more information about the project, contact:

(405) 325-3269
or
environment@odot.org

<http://www.odot.org/publicmeetings>





VIRTUAL OPEN HOUSE

**August 29, 2023 to
September 12, 2023**

I-35 Roadway Improvement in Love
County

I-35: From mile marker 3.2 north 1.5
miles to mile marker 4.7; JP31896(07)
&
I-35: From mile marker 5.7 north 2.0
miles to mile marker 7.7; JP35728(04)

www.odot.org/I35LoveCo

VIRTUAL OPEN HOUSE

The Oklahoma Department of Transportation will host a virtual open house to present the proposed improvements for I-35 from mile marker 3.2 north to mile marker 7.7 in Love County. These are two separate construction projects separated by 1.0 mile, which has a project currently programmed. This open house will present the purpose and need for the projects, environmental issues, proposed design and allow the public to submit comments. This will be a web-based format (no in-person meeting). The information will be available beginning August 29, 2023 and comments are requested by September 12, 2023.

PURPOSE

The purpose of this virtual open house public meeting is to present the proposed design for these segments of I-35 and obtain public input to aid ODOT in moving forward with the completion of the environmental studies, design, and construction.

JOIN

www.odot.org/I35LoveCo





August 11, 2023

**RE: Virtual Open House Public Meeting for I-35 Roadway Improvements in Love County.
Job Piece Numbers: JP 31896(07) & JP 35728(04)**

Dear Stakeholders, Property Owners, and Utility Owners:

The Oklahoma Department of Transportation (ODOT) is proposing to improve the I-35 roadway with two separate programmed construction projects in the Department's 8-year Transportation Program listed below.

- I-35: From mile marker 3.2 north 1.5 miles to mile marker 4.7; JP 31896(07)
- I-35: From mile marker 5.7 north 2.0 miles to mile marker 7.7; JP 35728(04)

Both projects currently have construction start dates in Fiscal Year 2027. The schedule is contingent on funding and subject to change as funds become available.

The enclosed pamphlet provides additional information concerning the referenced projects.

If you are leasing this property, please notify your lessee of this virtual open house public meeting. Should you have any questions regarding this project, please email environment@odot.org or call 405-325-3269 and leave a detailed message.

Respectfully,

Joe Brutsché
Environmental Programs Interim Division Manager

The Oklahoma Department of Transportation (ODOT) ensures that no person or groups of persons shall, on the grounds of race, color, sex, religion, national origin, age, disability, retaliation or genetic information, be excluded from participation in, be denied the benefits of, or be otherwise subjected to discrimination under any and all programs, services, or activities administered by ODOT, its recipients, sub-recipients, and contractors. To request an accommodation please contact the ADA Coordinator at 405-521-4140 or the Oklahoma Relay Service at 1-800-722-0353, no later than 72 hours before any scheduled event. If you have any ADA or Title VI questions email ODOT-ada-titlevi@odot.org.

Project Background

The ODOT, in cooperation with the Federal Highway Administration (FHWA), is proposing roadway improvements on Interstate (I) 35 in Love County, Oklahoma. ODOT has tasked a consultant to develop preliminary design plans, which create a six lane facility and corrects existing deficiencies. I-35 is an arterial corridor connecting multiple states and carries large volumes of commercial traffic. Due to the expected future traffic volumes in this area, this roadway is being designed from the existing two lanes of traffic in each direction to three lanes of traffic in each direction.

The purpose and need of the projects are to improve the operational capacity of I-35 to accommodate existing and future traffic volumes, improve safety, and enhance local and regional connectivity.

Project Description

The Oklahoma Department of Transportation (ODOT), in cooperation with the Federal Highway Administration (FHWA), is developing design plans for improving two segments of I-35 in Love County. The two roadway construction projects, which will widen I-35 from 4 to 6 lanes. Project one consists of I-35 beginning at mile marker 3.2 extending north 1.5 miles ending at mile marker 4.7. Project two consists of I-35 beginning at mile marker 5.7 extending north 2.0 miles ending at mile marker 7.7. In-between the two proposed roadway construction projects is an existing interchange at I-35 and SH-153, which has already completed final design and is scheduled for construction in 2027. The I-35/SH-153 interchange improvements include bridge replacement and the widening of I-35 mainline from mile marker 4.7 to mile marker 5.7 to accommodate for the future widening I-35 projects.

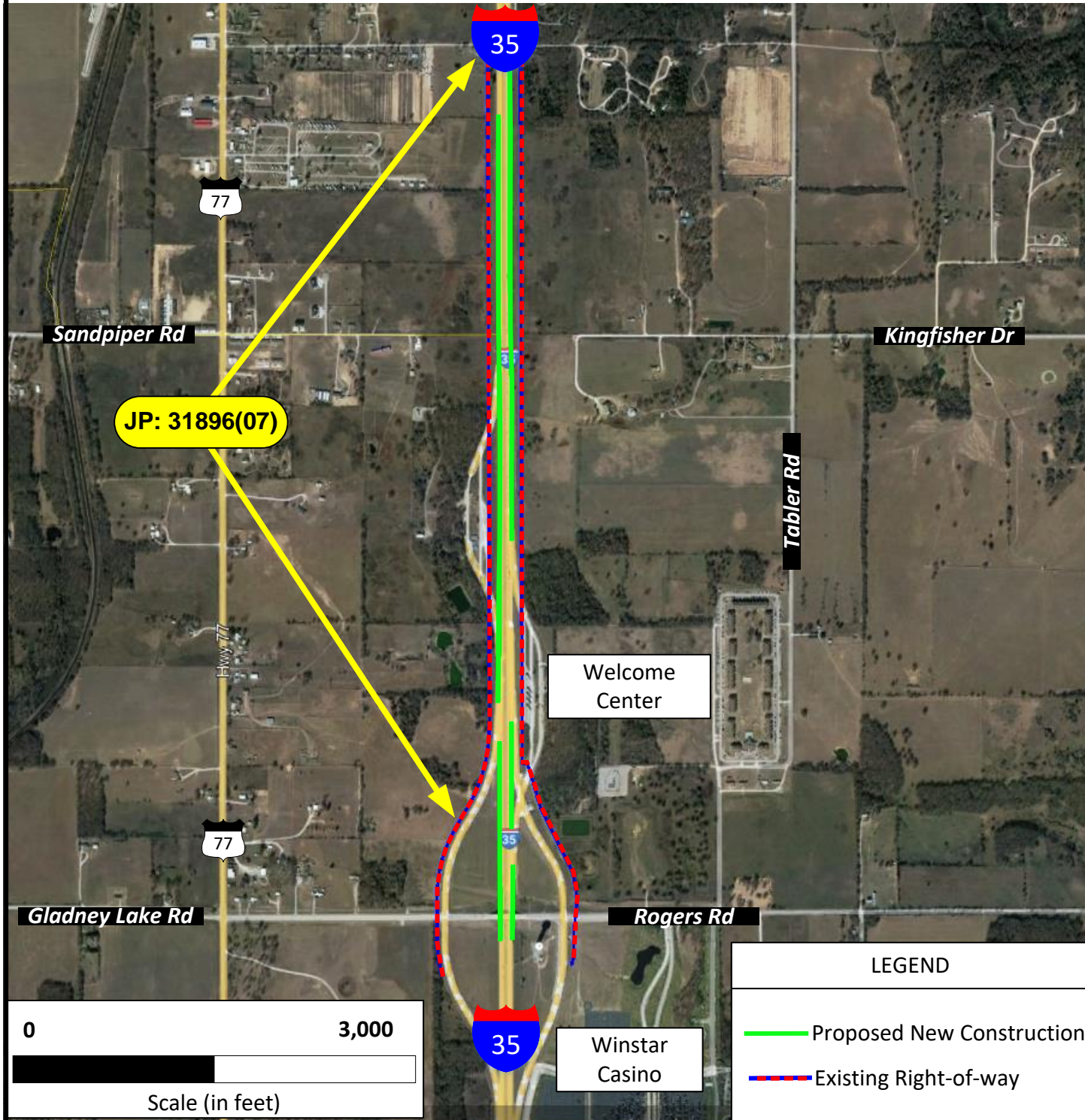
The proposed improvement for both I-35 projects consists of widening I-35 from existing two (2) lanes in each direction to the proposed three (3) lanes of traffic in each direction. One (1) 12-ft. wide lane in each direction will be added to the outside of the existing highway resulting in a six (6) lane interstate with full control of access. The inside shoulders will be widened and reconstructed to 10-ft. wide. The outside shoulder will be reconstructed to 10-ft. wide.

From mile marker 3.2 to mile marker 4.7 the future six-lane open section facility will consist of a 40-ft. wide paved median with median barrier wall at the center. From mile marker 5.7 to 7.7 the future six lane open section facility will consist of a variable width with a grass median.

Improvements will occur along the existing alignment, with no new right-of-way being acquired. The road will remain open, and construction phased to maintain two lanes of traffic in each direction. Construction will be completed in two separate construction projects, which are both currently scheduled to begin construction in 2027.

No additional right-of-way is needed for either project.

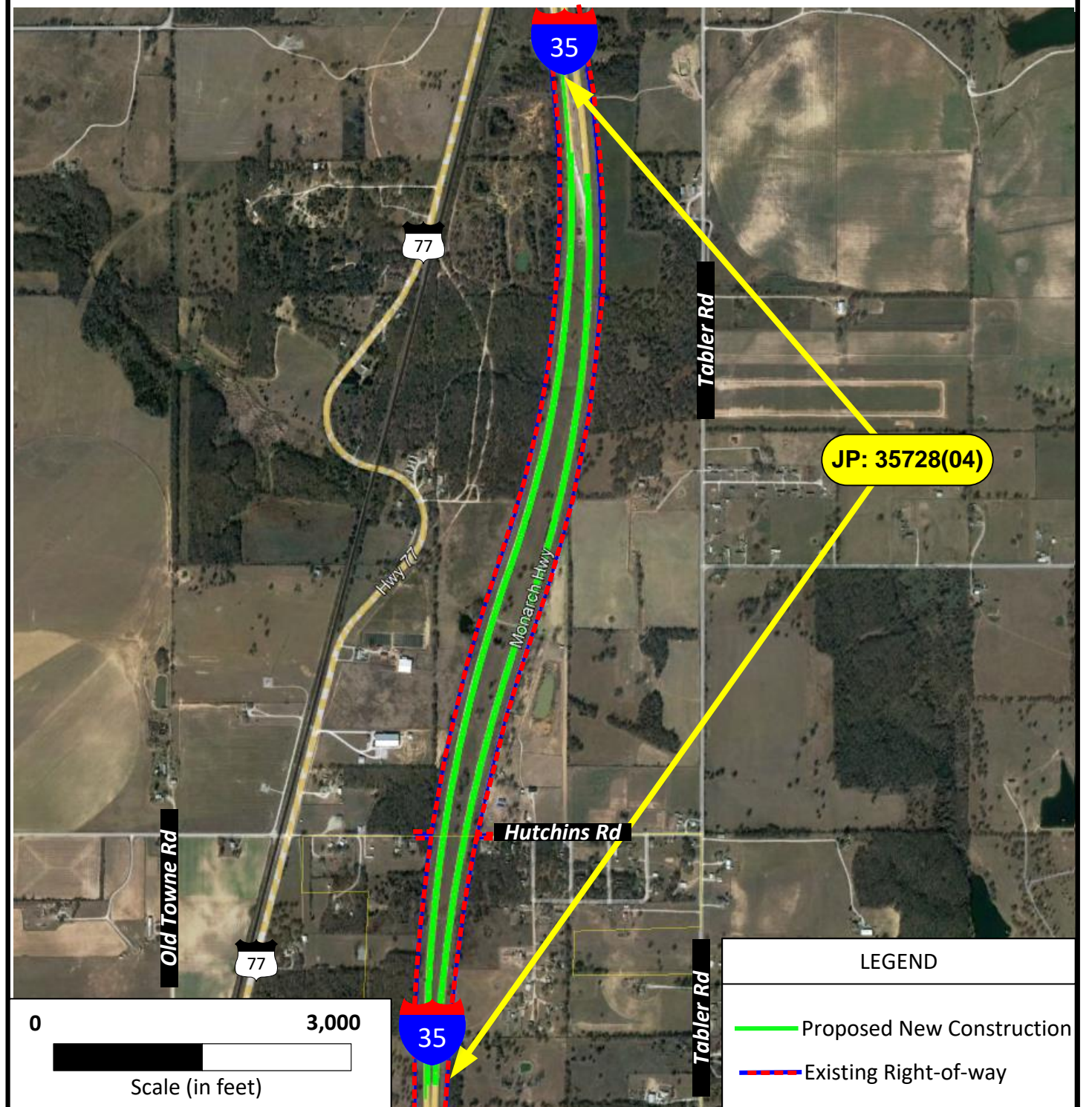
JP31896(07): I-35: From mile marker 3.2 north 1.5 miles to mile marker 4.7 - \$10 million



PROPOSED SIX-LANE INTERSTATE TYPICAL SECTION



JP35728(04): I-35: From mile marker 5.7 north 2.0 miles to mile marker 7.7 - \$11 million



PROPOSED SIX-LANE INTERSTATE TYPICAL SECTION

