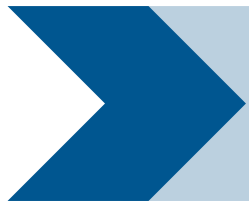


- The existing I-35 roadway has two (2) 12-foot-wide driving lanes with 10 foot wide outside and 4 foot wide inside paved shoulders in each direction, resulting in a four-lane interstate with full control of access. The roadway has a 40-foot wide median.
- The current Annual Average Daily Traffic (AADT) on I-35 from mile marker 3.2 north 1.5 miles to mile marker 4.7 is 32,000 vehicles per day (vpd) with future 20-year traffic of 51,200 vpd.
- The current AADT on I-35 from mile marker 5.7 north 2.0 miles to mile marker 7.7 is 32,000 vpd with future 20-year traffic of 51,000 vpd.
- This project is in the Department's Current 8 Year Construction Program.
- I-35 is an arterial corridor connecting multiple states and carrying large volumes of commercial traffic. Due to the growth, this corridor no longer meets the current traffic demand.

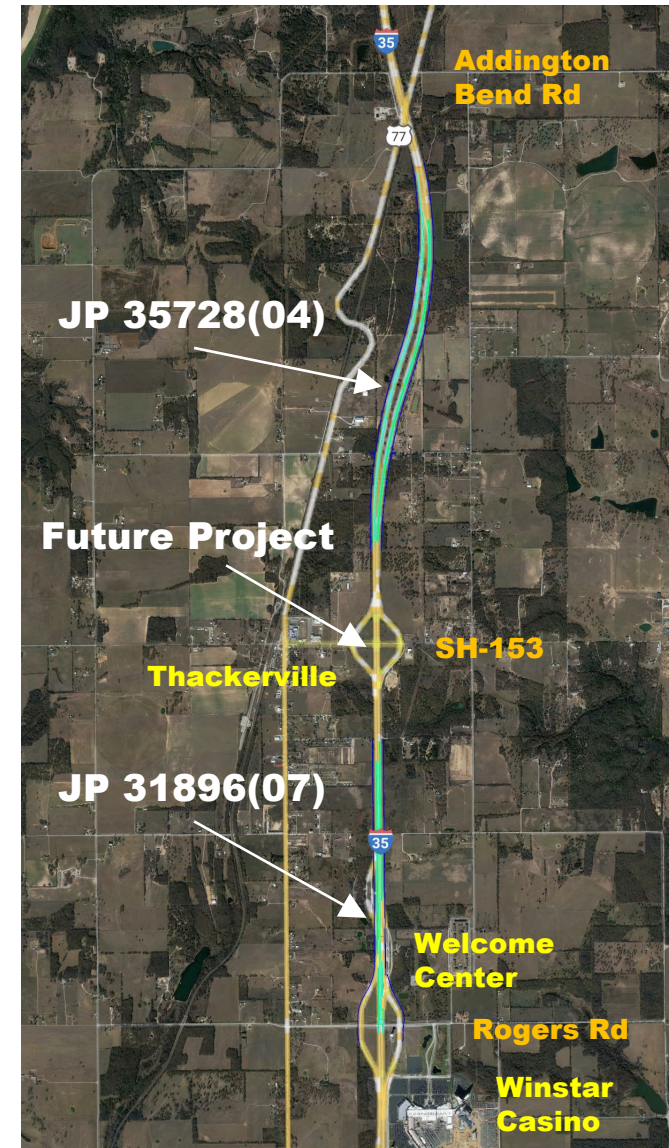


The purpose and need of the projects are to improve the operational capacity of I-35 to accommodate existing and future traffic volumes, improve safety, and enhance local and regional connectivity.

ODOT is proposing to widen I-35 from 4 lanes to 6 lanes with two roadway construction projects:

- I-35 from mile marker 3.2 north 1.5 miles to mile marker 4.7
- I-35 from mile marker 5.7 north 2.0 miles to mile marker 7.7

Another I-35 widening project will be constructed between the JP 31896(07) and JP 35728(04) projects to provide a continuous 6-lane interstate segment.



# Proposed Improvements

## Both Projects:

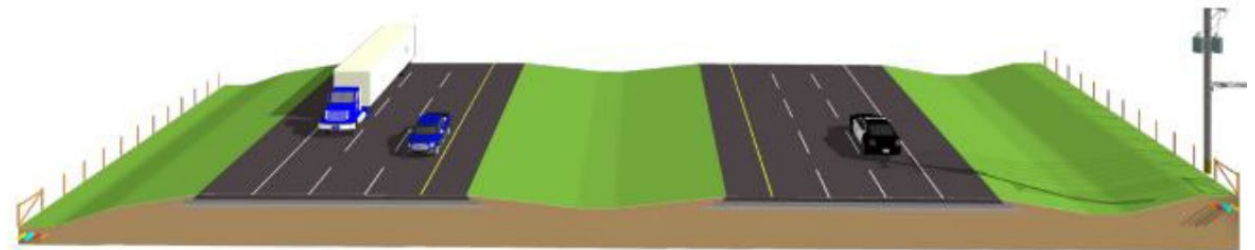
- Widening one (1) 12-foot-wide lane in each direction to the outside of the existing highway
- Widening to 10-foot-wide inside shoulders
- Reconstructing 10-foot-wide outside shoulders



31896(07)

## JP 31896(07):

- 40-foot-wide paved median with median barrier at the center



35728(04)

## JP 35728(04):

- Variable width grass median



The road will remain open, and construction phased to maintain two lanes of traffic in each direction. No new right-of-way will be acquired. Construction will be completed in two separate construction projects.