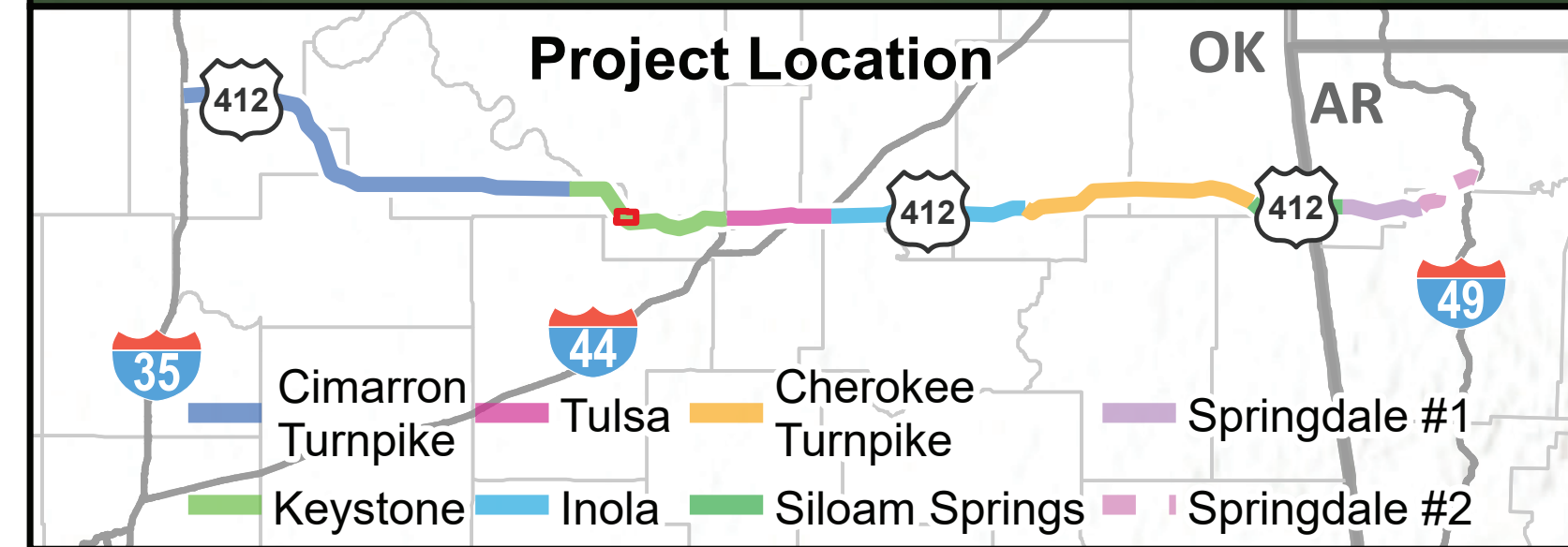


U.S. 412 and Diamond Head Drive Public Meeting

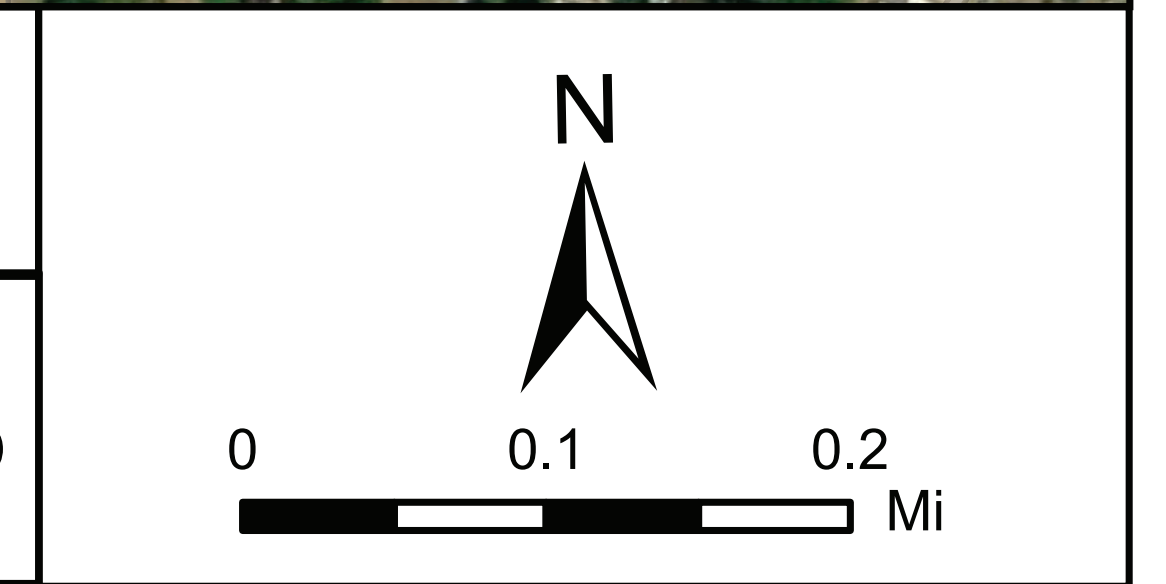
December 5, 2023

Access Locations



U.S. 412/ Diamond Head Dr.
Access Locations

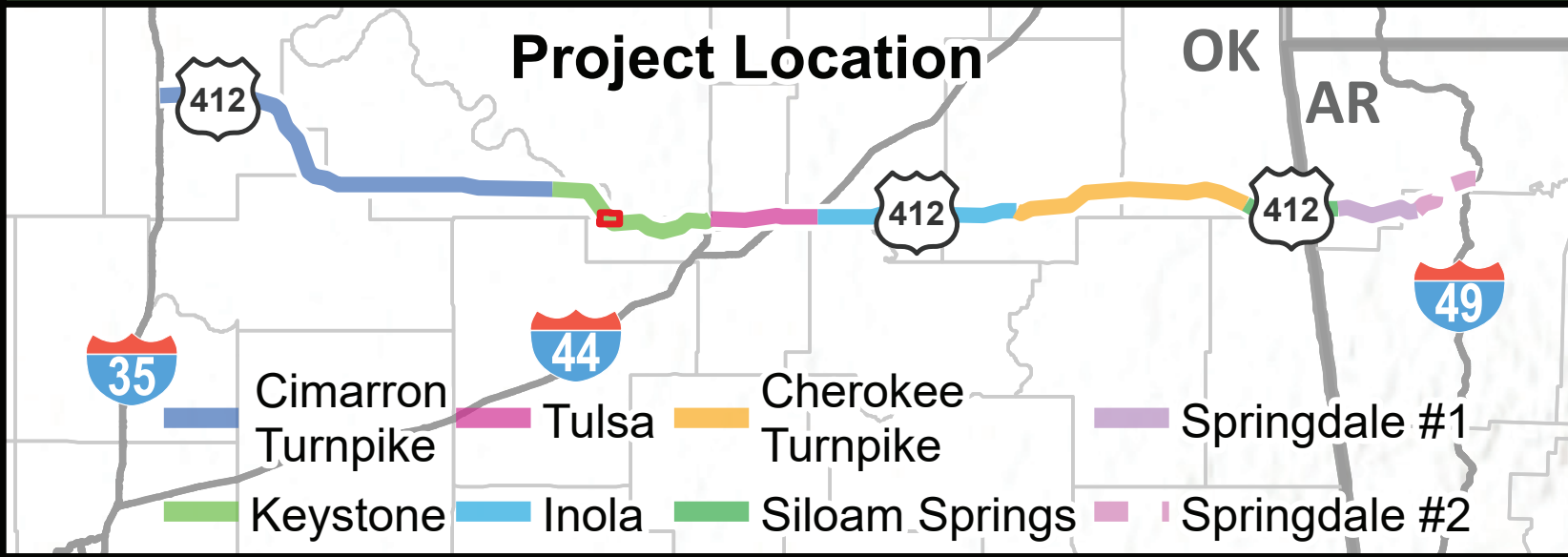
OKLAHOMA
Transportation **HNTB**
Dec 2023



Alternative 1A



- Roadway Network
- Impact Limits
- Bridge

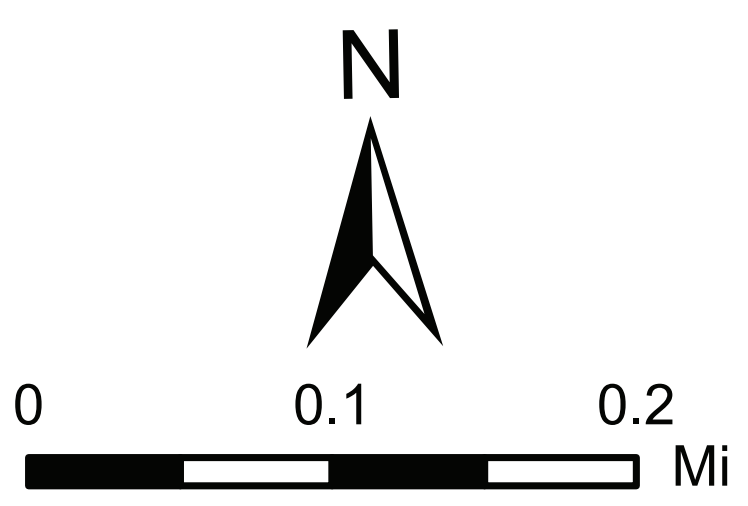


U.S. 412/ Diamond Head Dr.

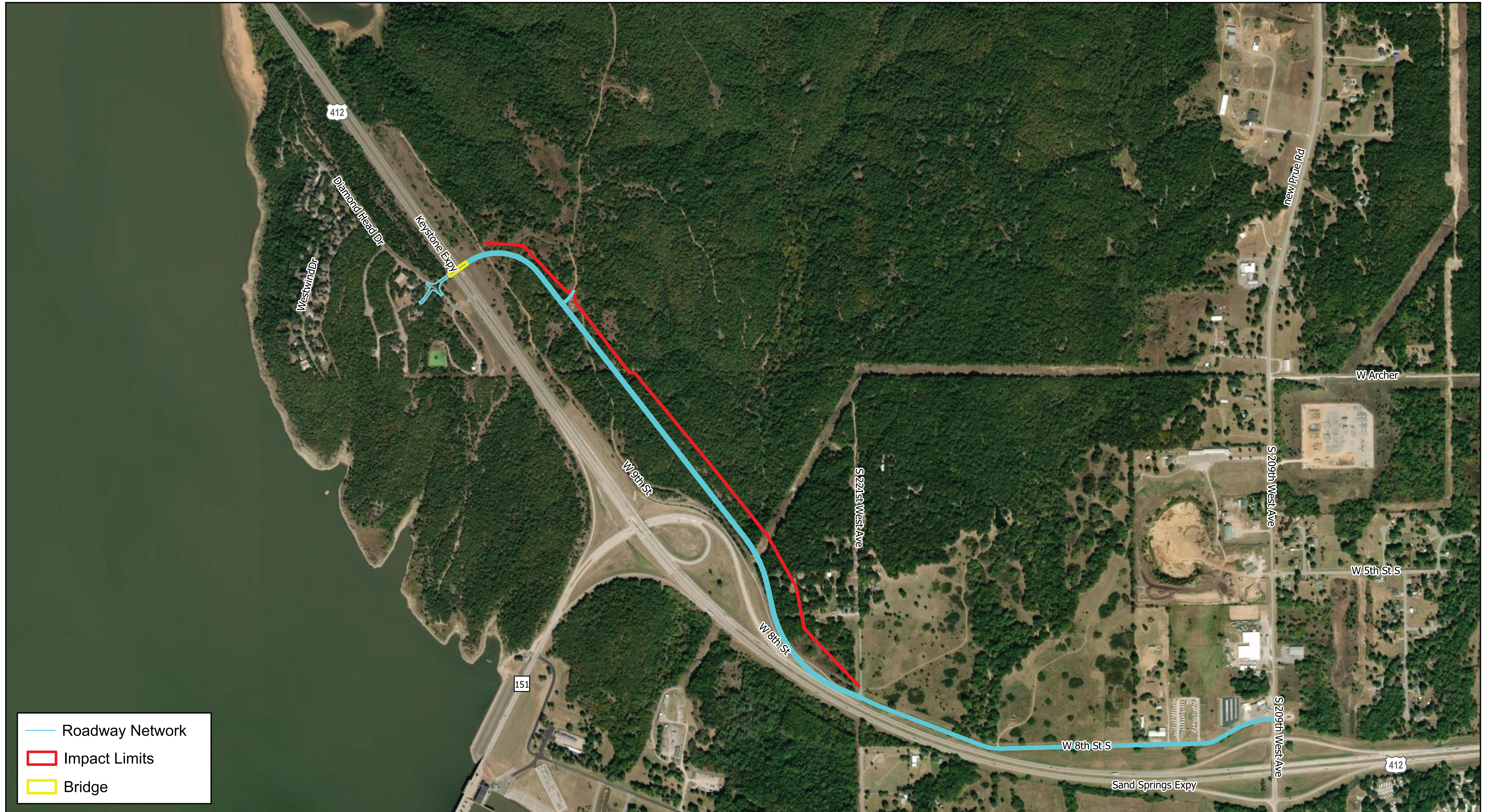
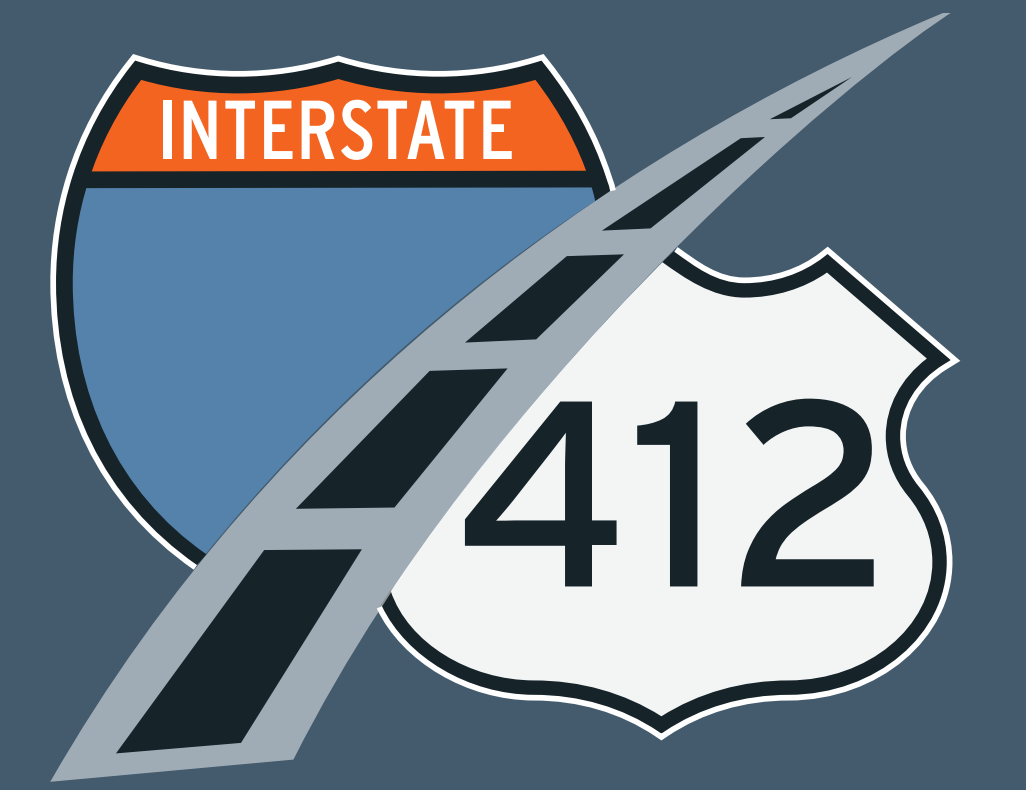
Alternative #1A



Dec 2023



Alternative 1B

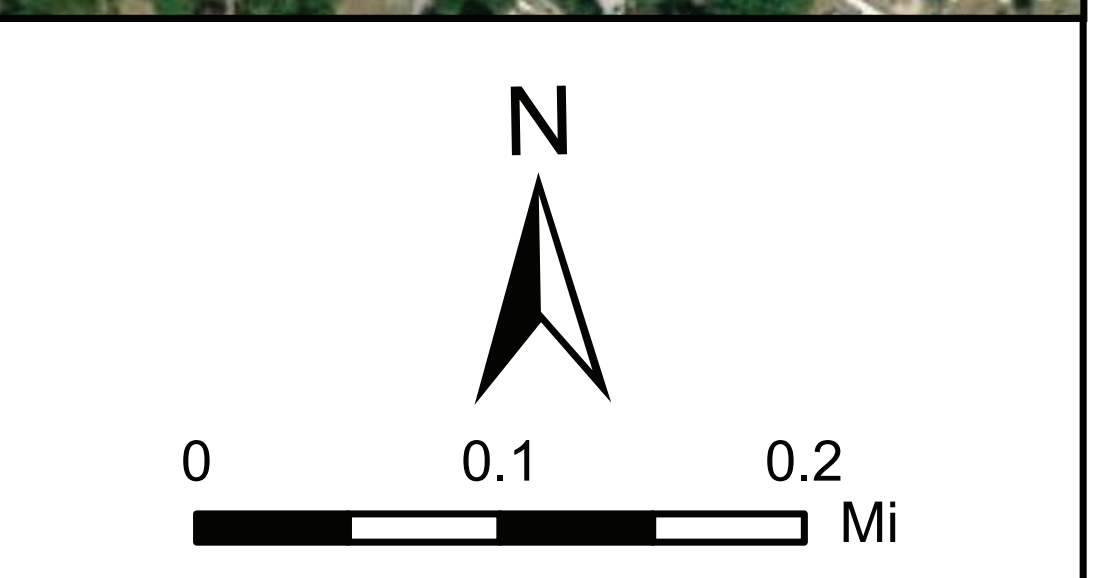


- Roadway Network
- Impact Limits
- Bridge

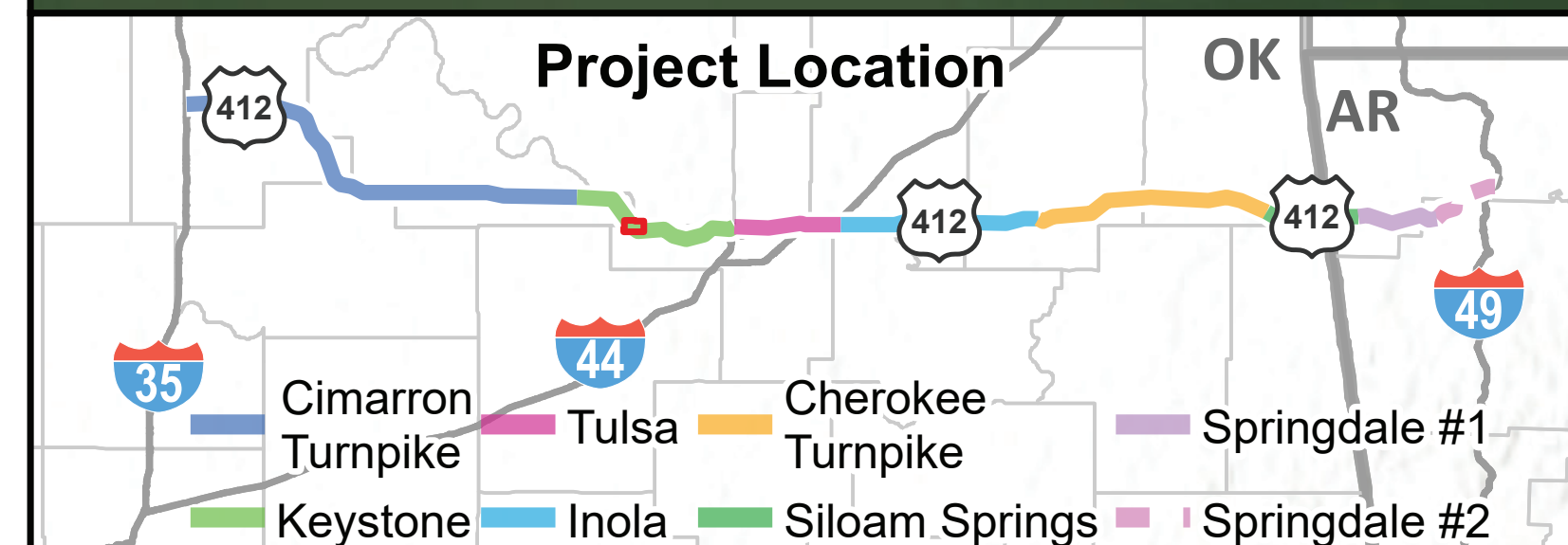


U.S. 412/ Diamond Head Dr.
Alternative #1B

OKLAHOMA Transportation **HNTB**
 Dec 2023



Alternative 2

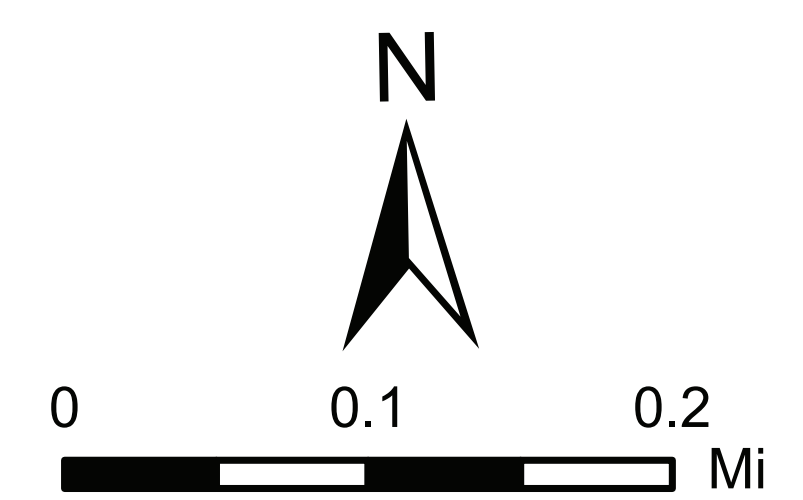


U.S. 412/ Diamond Head Dr.

Alternative #2



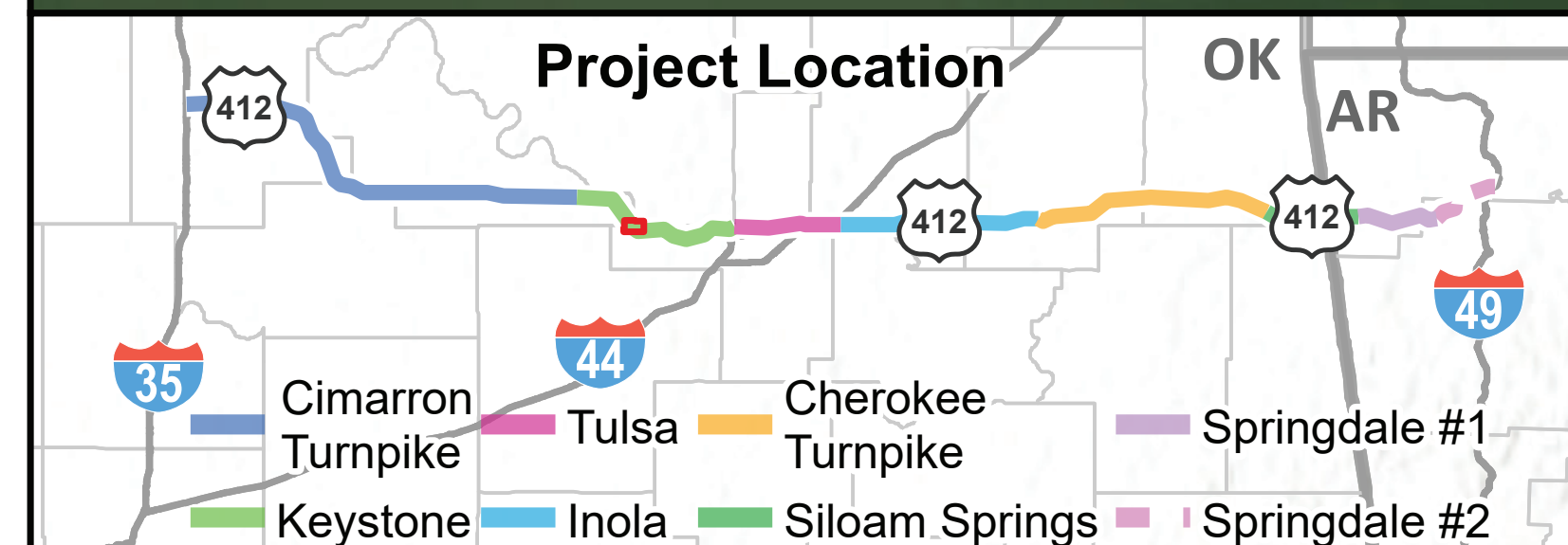
Dec 2023



Alternative 3



- Roadway Network
- Impact Limits
- Bridge

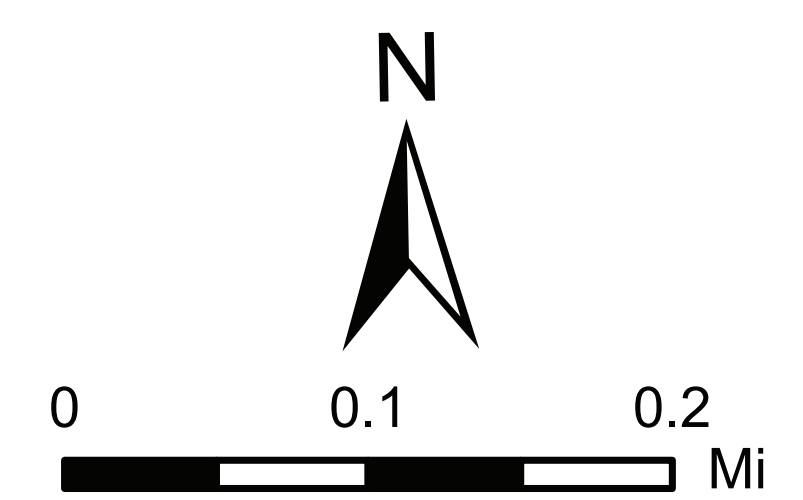


U.S. 412/ Diamond Head Dr.

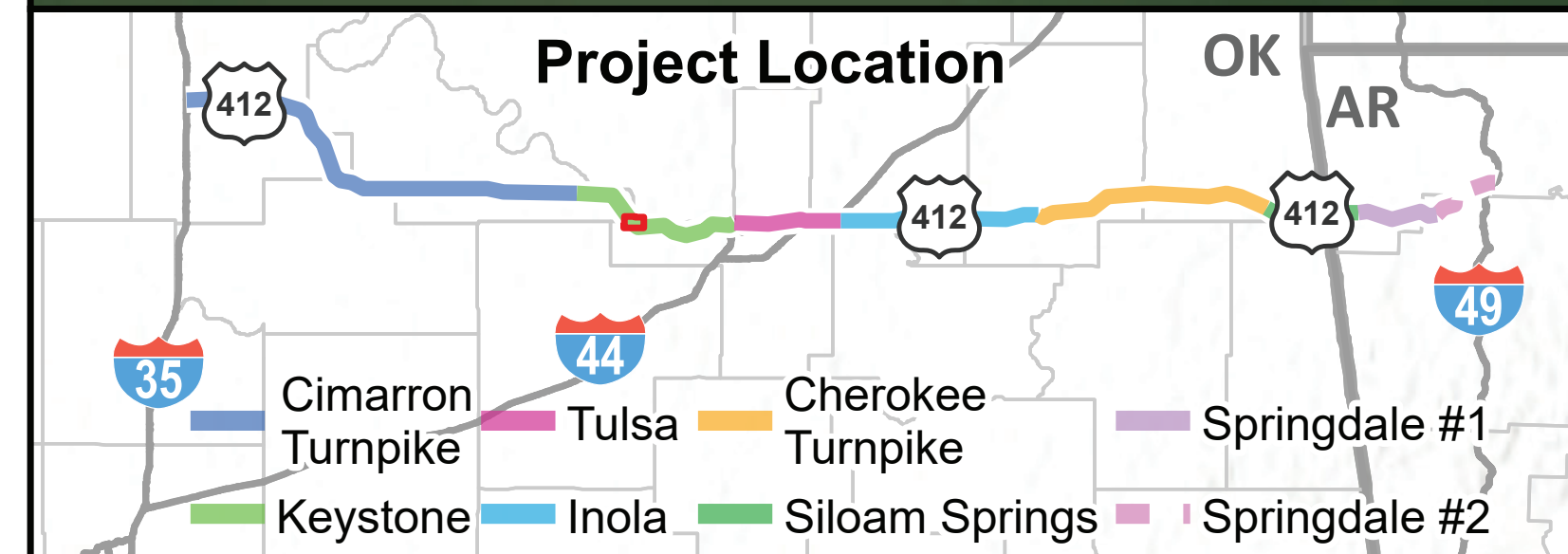
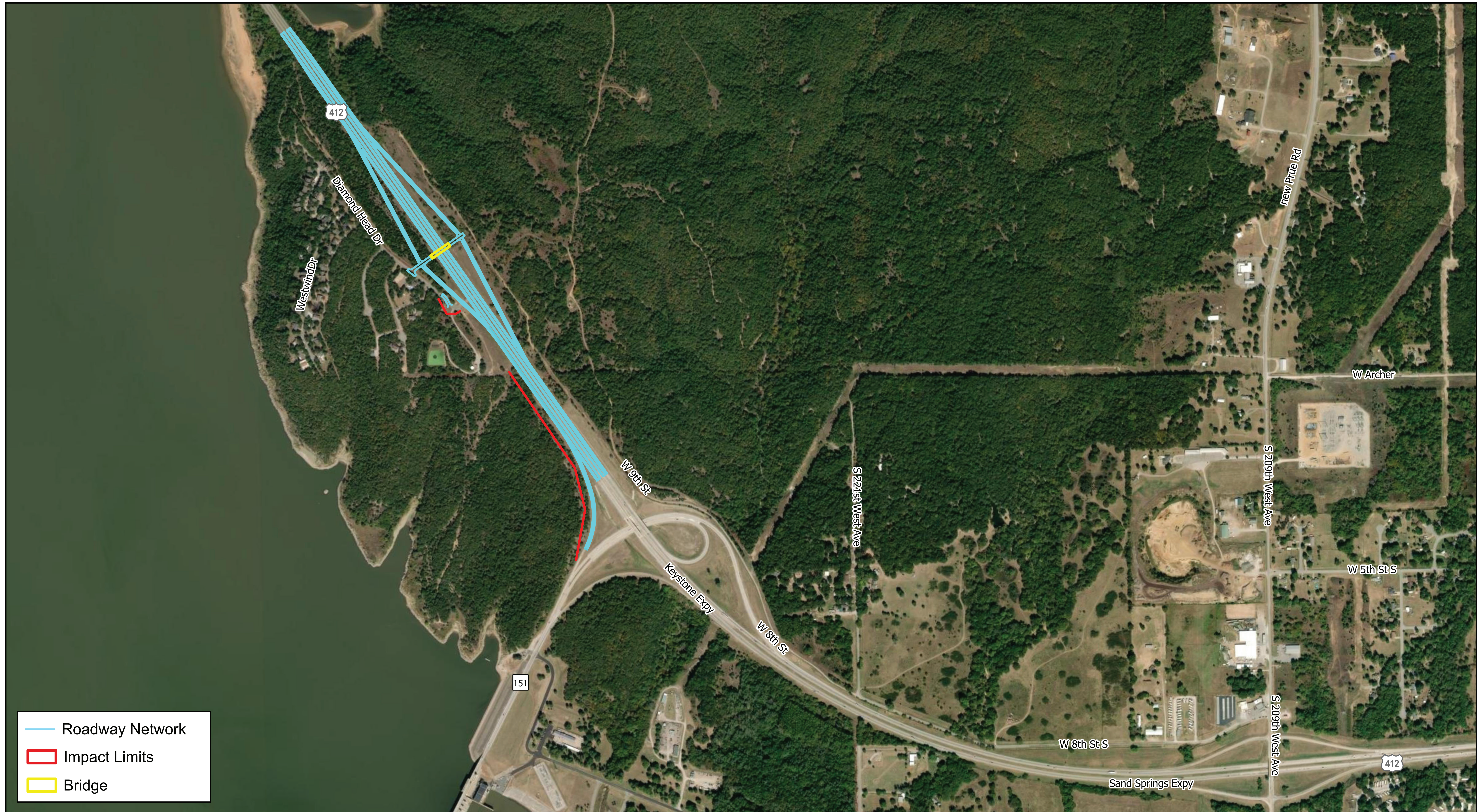
Alternative #3



Dec 2023



Alternative 4

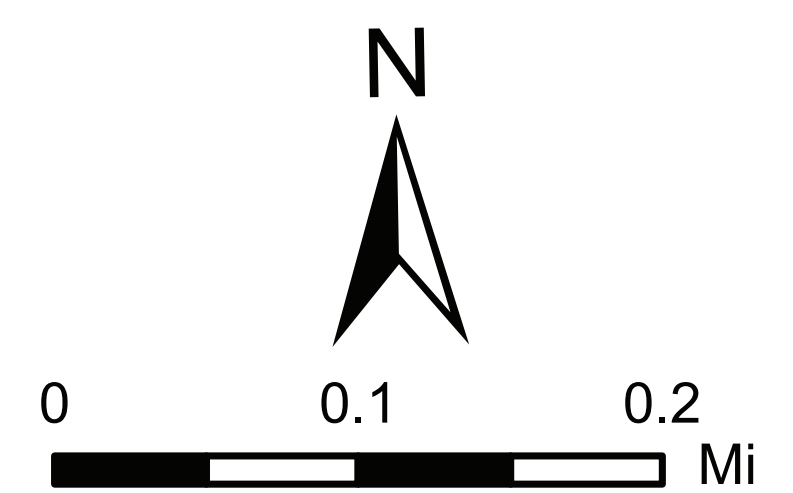


U.S. 412/ Diamond Head Dr.

Alternative #4



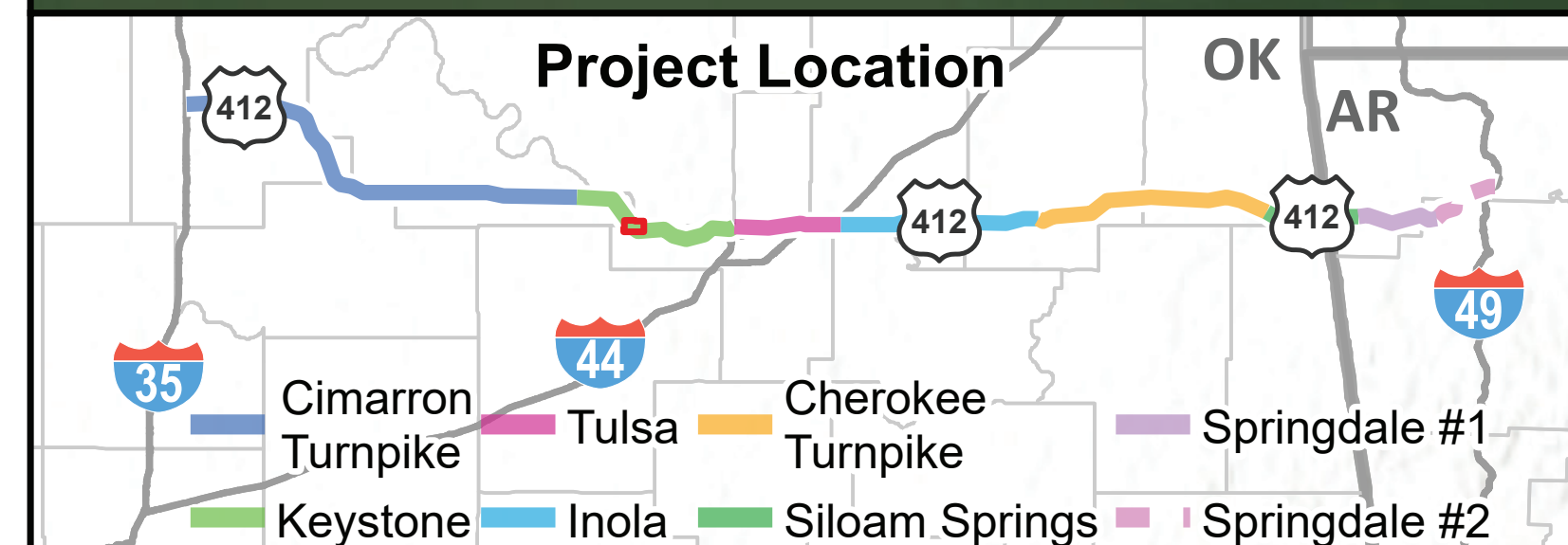
Dec 2023



Alternative 5



- Roadway Network
- Impact Limits
- Bridge

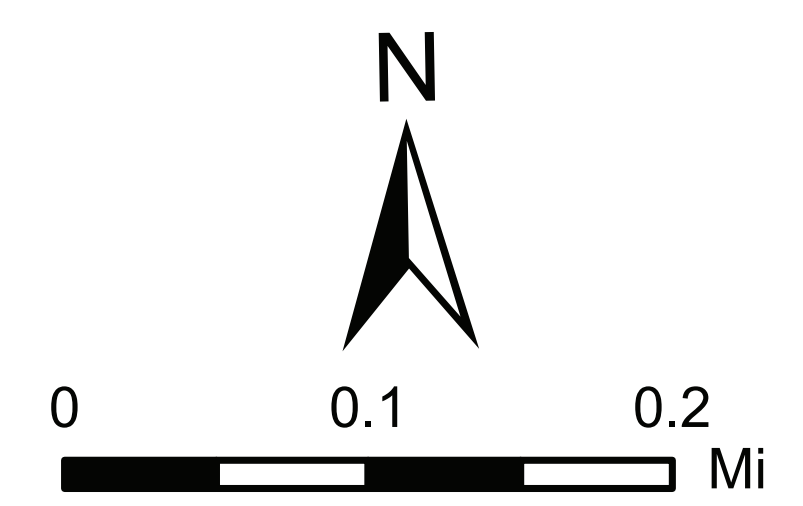


U.S. 412/ Diamond Head Dr.

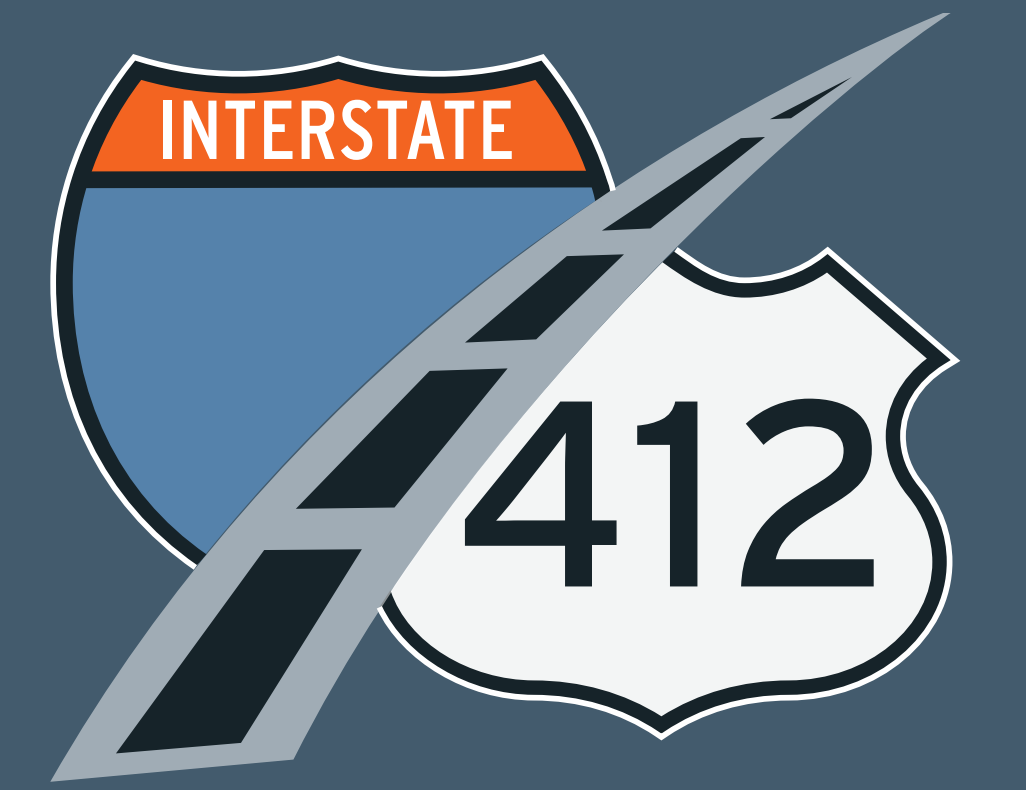
Alternative #5



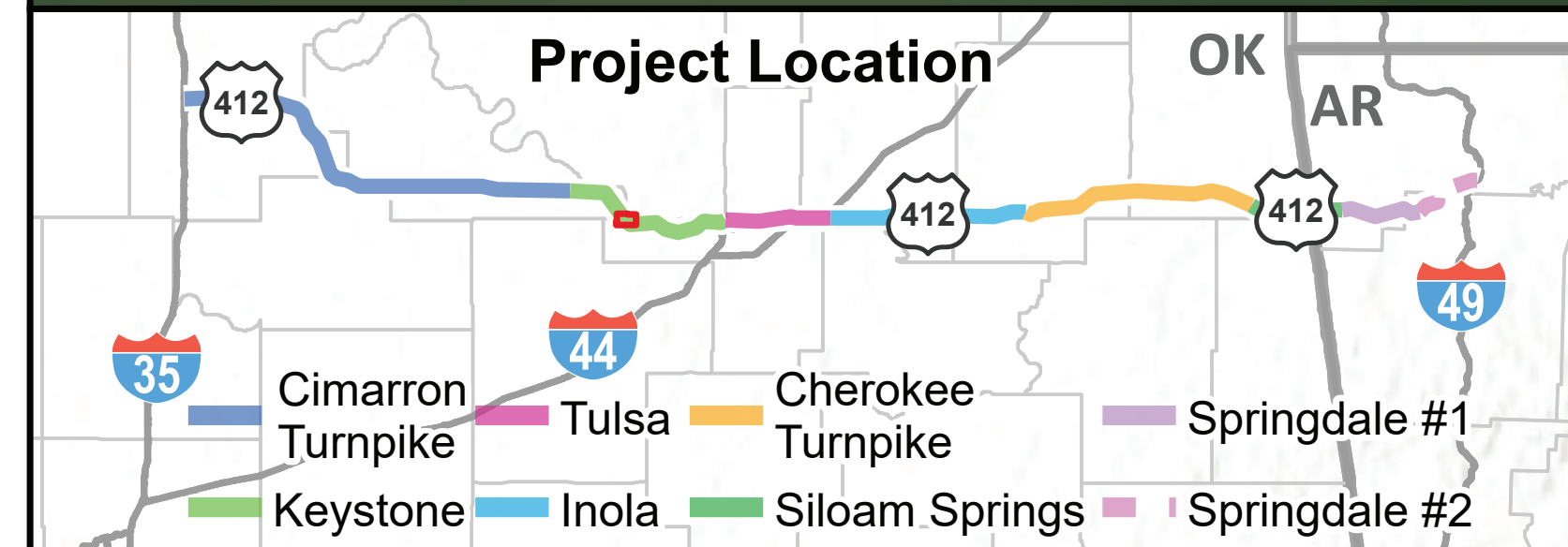
Dec 2023



Alternative 6

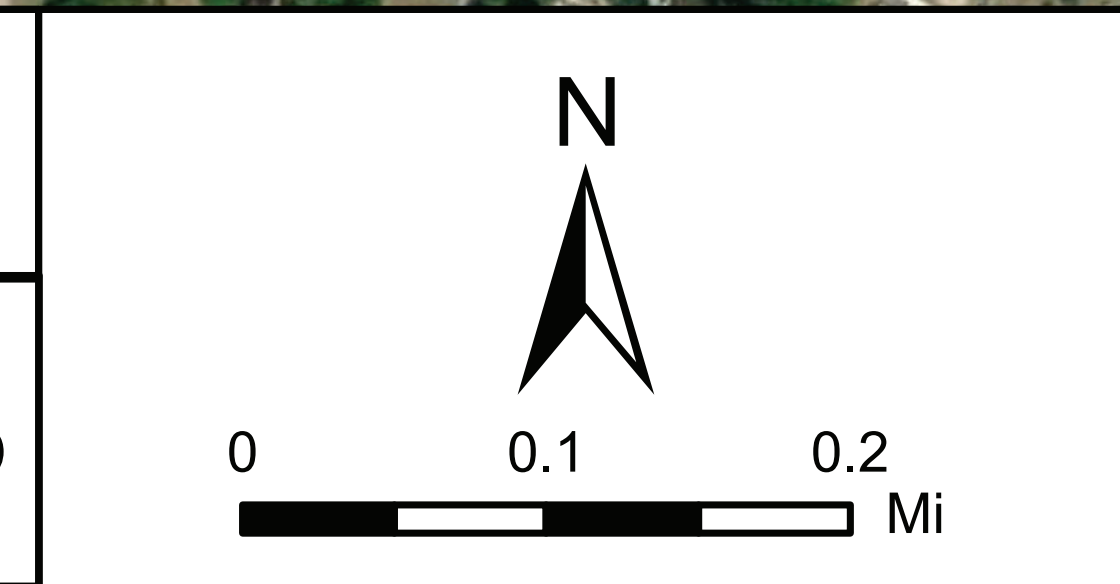


- Roadway Network
- Impact Limits
- Bridge



U.S. 412/ Diamond Head Dr.
Alternative #6

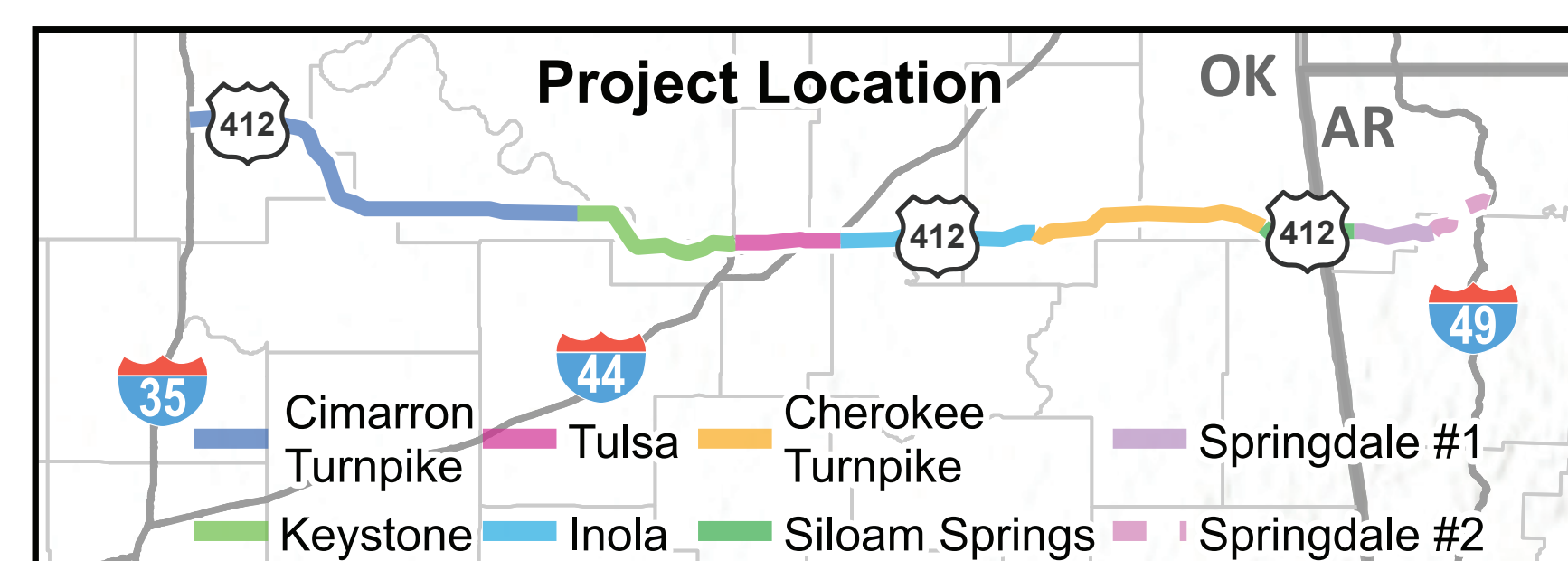
OKLAHOMA Transportation **HNTB**
 Dec 2023



Alternative Matrix



US 412/Diamond Head Drive Alignment Evaluation Matrix									
11/10/2023									
	Alternative Description	Alternative Considerations	Evaluation Factors						
			Qualitative				Quantitative		
			Access to US 412/Future Interstate	Safety	Constructability	Environmental Impact	ROW (acres)	ROW Cost Construction Cost	Total
Proposed Alternatives									
Alternative 1A/1B	Local Access Road-North Side to 209th Interchange	PRO= Neighborhood privacy, minimal USACE impact CON= Out of direction travel to 209th & emergency response time					36.3	\$ 575,000.00 \$ 9,700,000.00	\$ 10,275,000
Alternative 2	Local Access Road-South Side to SH-151	PRO= Less out of direction than Alt 1., direct access to SH151 CON= Safety (at-grade near system interchange), impacts to USACE					10.1	\$ 95,000.00 \$ 3,450,000.00	\$ 3,545,000
Alternative 3	US 412 Connection to East only w/ 1-way access roads	PRO= Direct connection to U.S. 412 EB near existing location CON= Only partial interchange, introduces new ML weaves					28.2	\$ 955,000.00 \$ 15,745,000.00	\$ 16,700,000
Alternative 4	Diamond interchange directly to neighborhood entrance	PRO= Fully directional access near neighborhood entrance CON= Long west facing ramps due to geometry, neighborhood privacy potentially compromised					2.2	\$ 20,000.00 \$ 16,200,000.00	\$ 16,220,000
Alternative 5	Roundabout style interchange at SH-151 and Access Road (N or S)	PRO= Continuous flow and closer spaced terminals, minimizes impacts to Osage Mineral, neighborhood privacy CON= Driver expectation of roundabouts, impacts to USACE					17.7	\$ 167,000.00 \$ 21,800,000.00	\$ 21,967,000
Alternative 6	Diamond interchange at SH-151 and Access Rd on North	PRO= Driver expectations w/ diamond, separates local traffic w/ North side frontage, minimizes impacts to USACE CON= Driver expectation (removes free flow exit ramps at SH-151)					54.9	\$ 750,000.00 \$ 28,600,000.00	\$ 29,350,000



U.S. 412/ Diamond Head Dr.

Alternative Matrix



Dec 2023