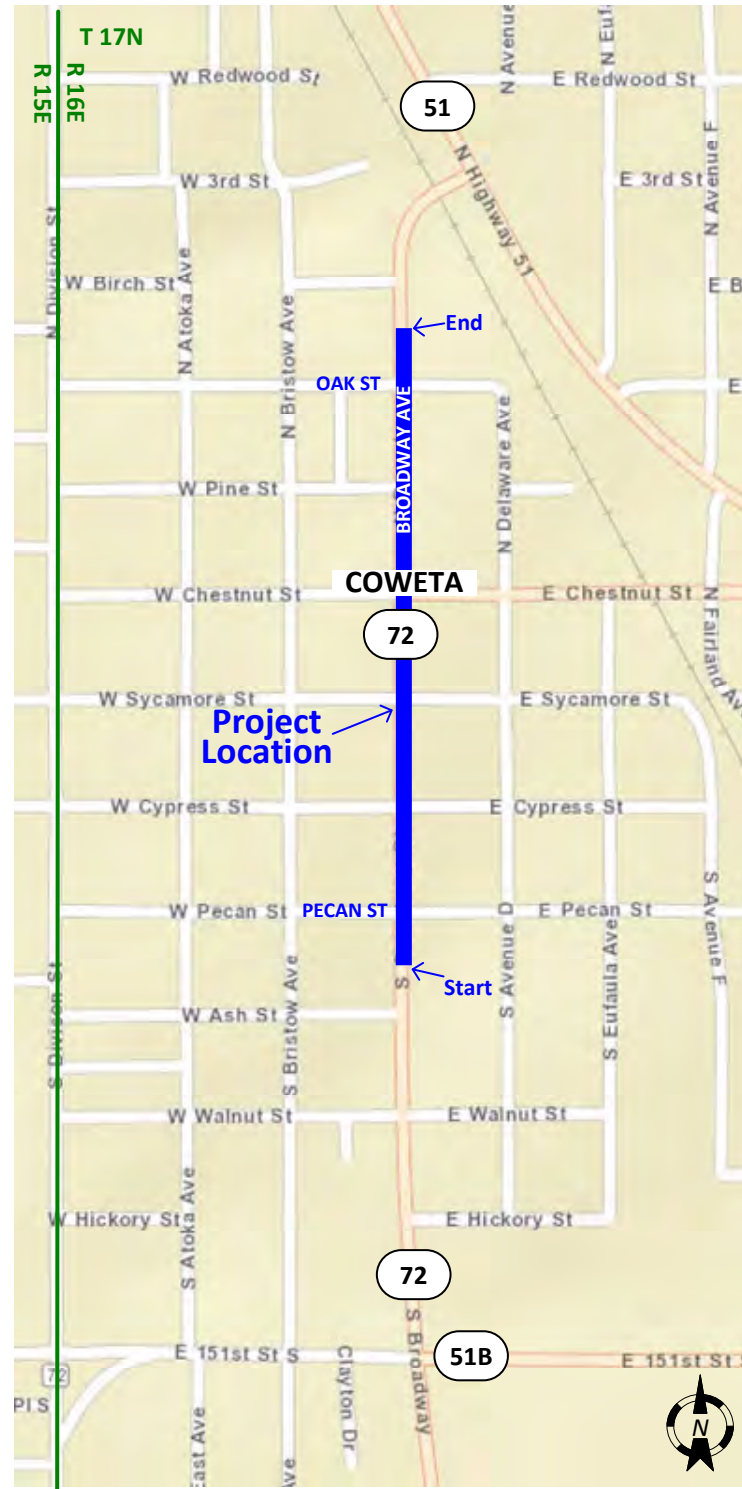


**PROJECT LOCATION MAP**

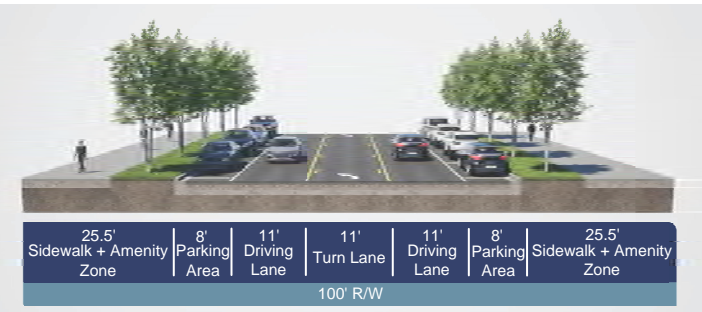


**PROPOSED TYPICAL SECTION**



**2-Lane Typical Roadway Section**

Typical includes: two 11-foot wide driving lanes; 19-foot wide back-in angled parking slots; 20-foot-wide sidewalks



**3-Lane Typical Roadway Section**

Typical includes: three 11-foot wide driving lanes; 8-foot wide parallel parking slots; 25.5-foot-wide sidewalks

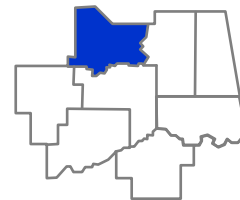
**PROJECT INFORMATION SUMMARY**

- Construction programmed to start in: **2028**
- Annual Average Daily Traffic (AADT) in year 2022: **9,800 Vehicles a day**
- Future Estimated AADT in year 2032: **11,050 Vehicles a day**
- Highway will remain open to traffic at all times during construction

**DISTRICT 1 ENGINEER: CHRIS WALLACE, P.E.**

Total Road Miles\*: 1,110.70    Total Interstate Miles\*: 97.31    Total Bridges\*\*: 704

Counties: Adair, Cherokee, Haskell, McIntosh, Muskogee, Okmulgee, Sequoyah, **Wagoner**



\*Totals DO NOT include Toll Roads  
 \*\*Totals DO NOT include County Bridges

**PLEASE PROVIDE YOUR COMMENTS BY MARCH 15, 2024**

**For more information about the project, contact:**

(405) 325-3269  
 environment@odot.org

**OPEN HOUSE**

**February 29, 2024**  
**4:00 p.m. to 6:30 p.m.**  
 Coweta Assembly of God | 29707 E HWY 51 | Coweta, OK 74429

**SH-72 • Wagoner County, OK • 34345(04)**

Presentation of Proposed Improvements & Solicitation of Public Input

**Purpose of Open House**

The purpose of the Open House meeting is to present the proposed alternatives and construction activities, sequencing, and scheduling, provide input, and solicit comments.

**Project Background**

The Oklahoma Department of Transportation (ODOT), in cooperation with the Federal Highway Administration (FHWA), proposes to make safety improvements to SH-72/Broadway Avenue beginning approximately 0.3 mile north of the SH-51B/SH-72 junction and extending north 0.4 mile to roughly 150 feet north of Oak Street in the town of Coweta, Wagoner County, Oklahoma. This segment of SH-72 is a principal arterial state highway through a commercial downtown district. It is a 30-foot-wide curb and gutter facility with two 12-foot-wide paved driving lanes and angled parking slots and sidewalks. The pavement is deteriorating and the sidewalks are not Americans with Disabilities Act (ADA) compliant. The 2022 traffic volume is 9,800 vehicles per day (vpd), which is projected to increase to 11,050 vpd by 2032.

**Project Description**

ODOT is evaluating proposed improvements to this segment of SH-72/Broadway Avenue while taking into consideration the cost of construction, utilities, and potential environmental concerns. Overall, the project will include pavement rehabilitation and reconstructing the sidewalks and ramps to meet ADA standards on both sides of SH-72/Broadway Avenue. Two Alternatives were developed to provide adequate space for pedestrians and traffic while considering the needs of downtown community events. Alternative 1 is a two-lane option with back-in angled parking spaces on both sides of the street. Alternative 2 is a three-lane option with parallel parking on both sides of the street, with a center turning lane.

All improvements will be made on the current alignment and will occur within the existing ODOT right-of-way. No new right-of-way is needed. SH-72/Broadway Avenue will remain open with access to businesses, the school and residences being maintained throughout the project duration.

<http://www.odot.org/publicmeetings>





2 LANE ALTERNATIVE



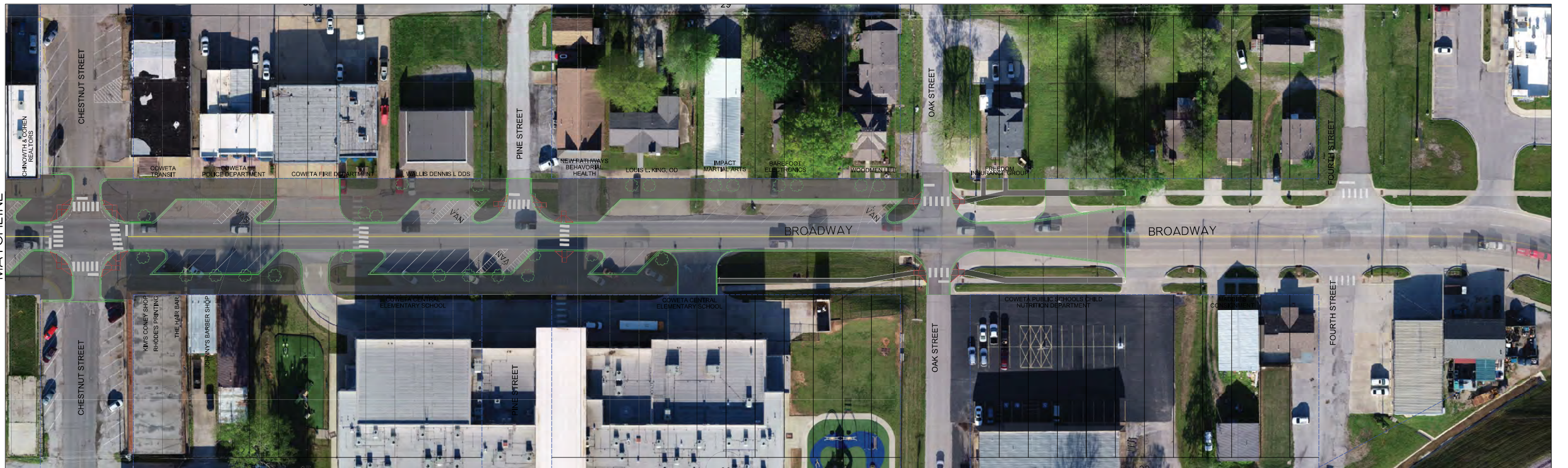
3 LANE ALTERNATIVE

PAVEMENT REHABILITATION

SH-72 From 0.3 Mile North of SH-51B Junction in Coweta,  
Extend North 0.4 Mile

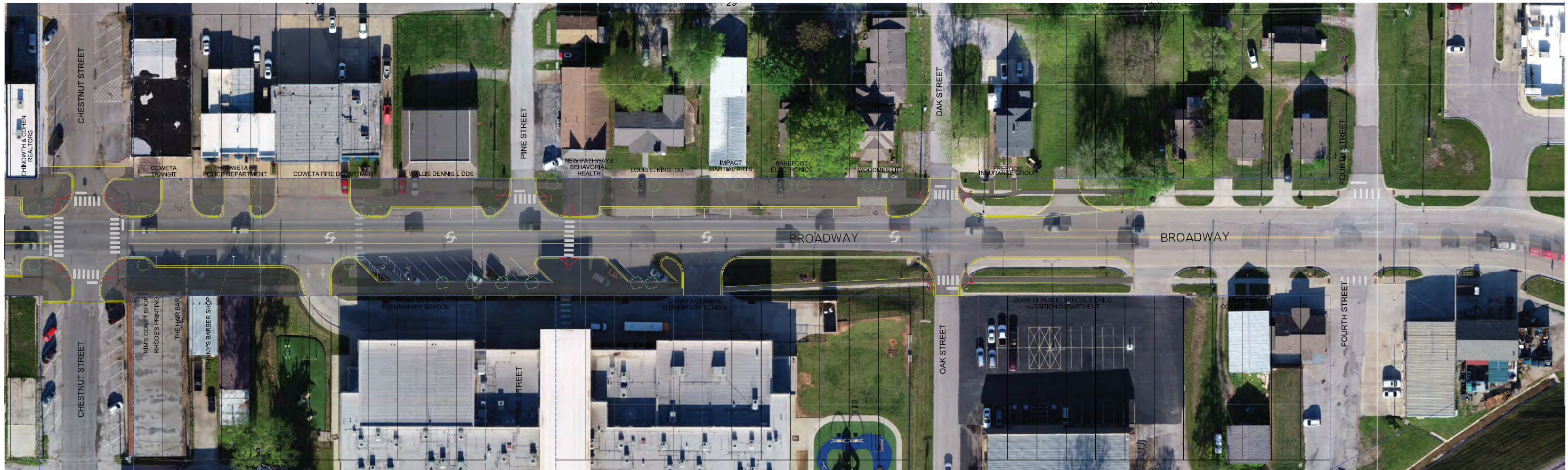


MATCHLINE



MATCHLINE

**2 LANE WITH REVERSE ANGLED PARKING**  
**PAVEMENT REHABILITATION**  
 SH-72 From 0.3 Mile North of SH-51B Junction in Coweta,  
 Extend North 0.4 Mile



MATCHLINE



MATCHLINE

**3 LANE WITH PARALLEL PARKING**

**PAVEMENT REHABILITATION**

SH-72 From 0.3 Mile North of SH-51B Junction in Coweta,  
Extend North 0.4 Mile