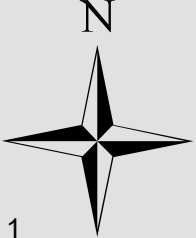
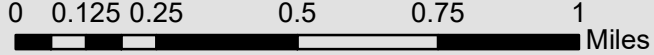


START

END

Legend

- Existing Right of Way
- Mapped Streams
- Sections
- Roads



Project Overview

JP 33801(04) / J3-3801(004)PM
 Grade, Drain, Bridge & Surface on SH-9: from 1.0 mi E of
 SH-2 JCT, east 4.0 mi
 Haskell County, OK



Source: Esri, Maxar, Earthstar Geographics, and the GIS User Community