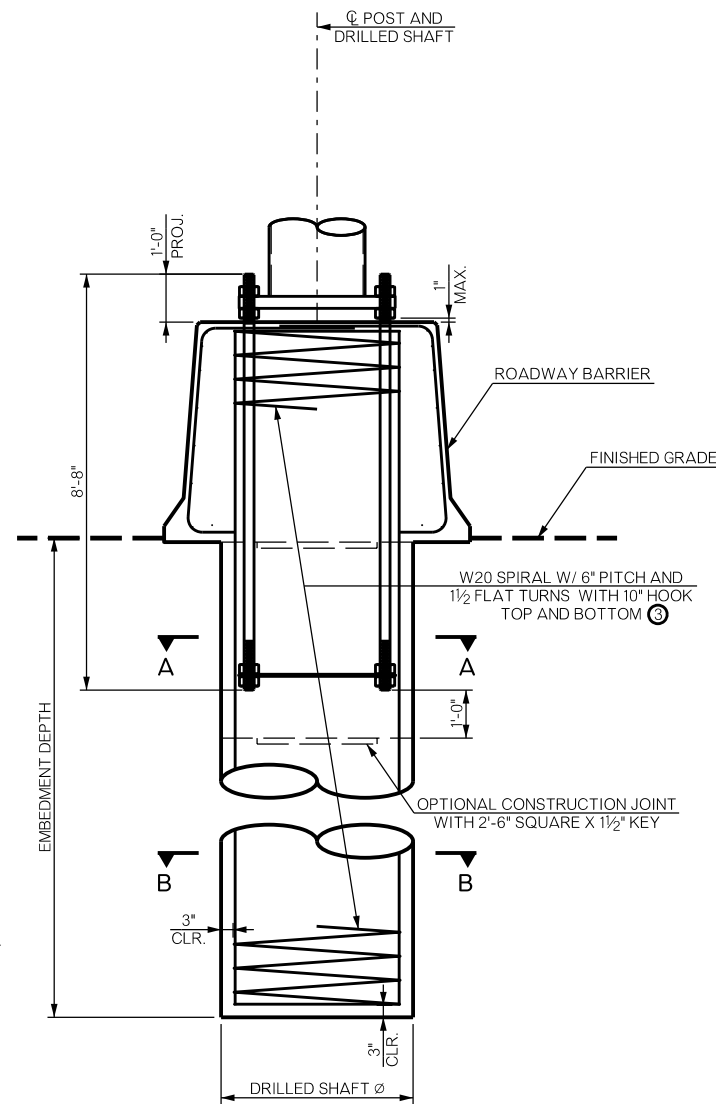
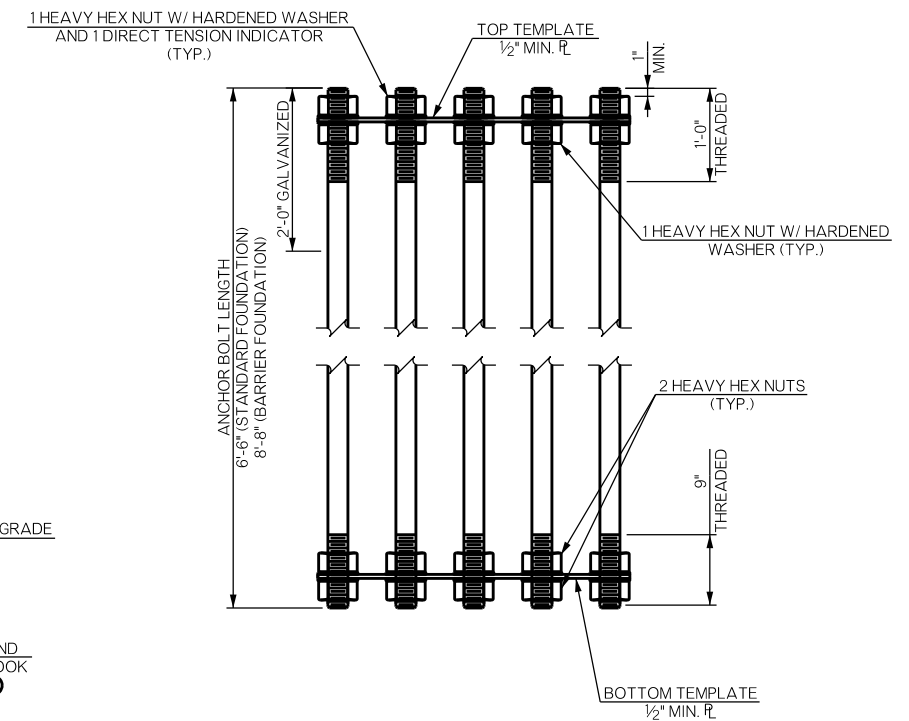


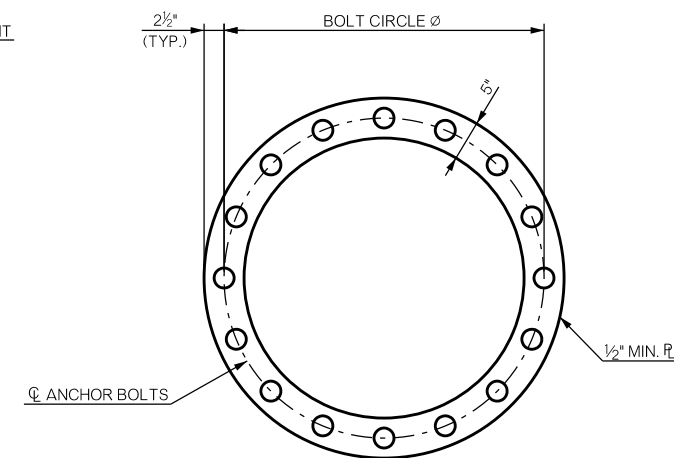
STANDARD SIGN FOUNDATION



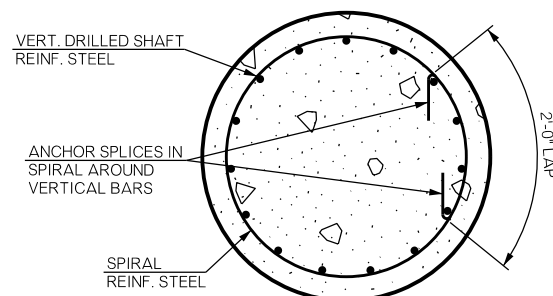
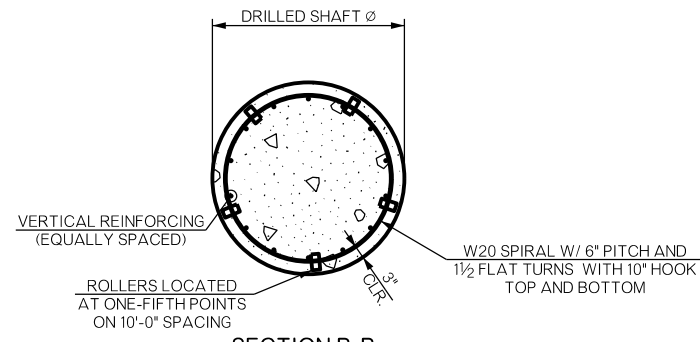
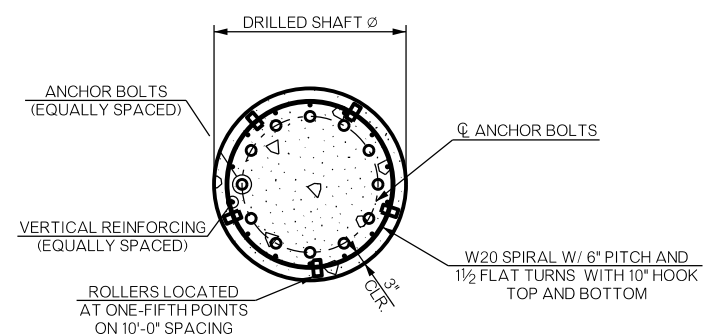
SIGN FOUNDATION AT BARRIER



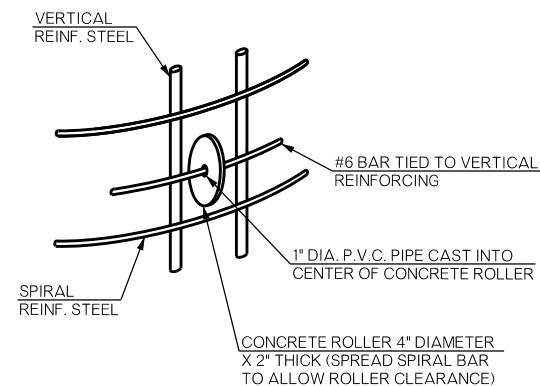
ANCHOR BOLT ASSEMBLY DETAIL



ANCHOR PLATE TEMPLATE

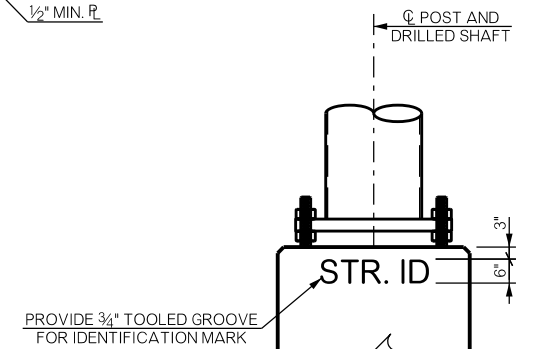


SPIRAL REINFORCING SPLICE DETAIL



DETAIL OF ROLLER INSTALLATION

NOTE: CONCRETE USED IN THE CONCRETE ROLLER SHALL HAVE A MINIMUM 28 DAY COMPRESSION STRENGTH OF 4,000 PSI. SLAB BOLSTER, HIGH CHAIRS, OR PLASTIC ROLLERS SHALL NOT BE SUBSTITUTED FOR THE CONCRETE ROLLERS.



STRUCTURE IDENTIFICATION DETAIL