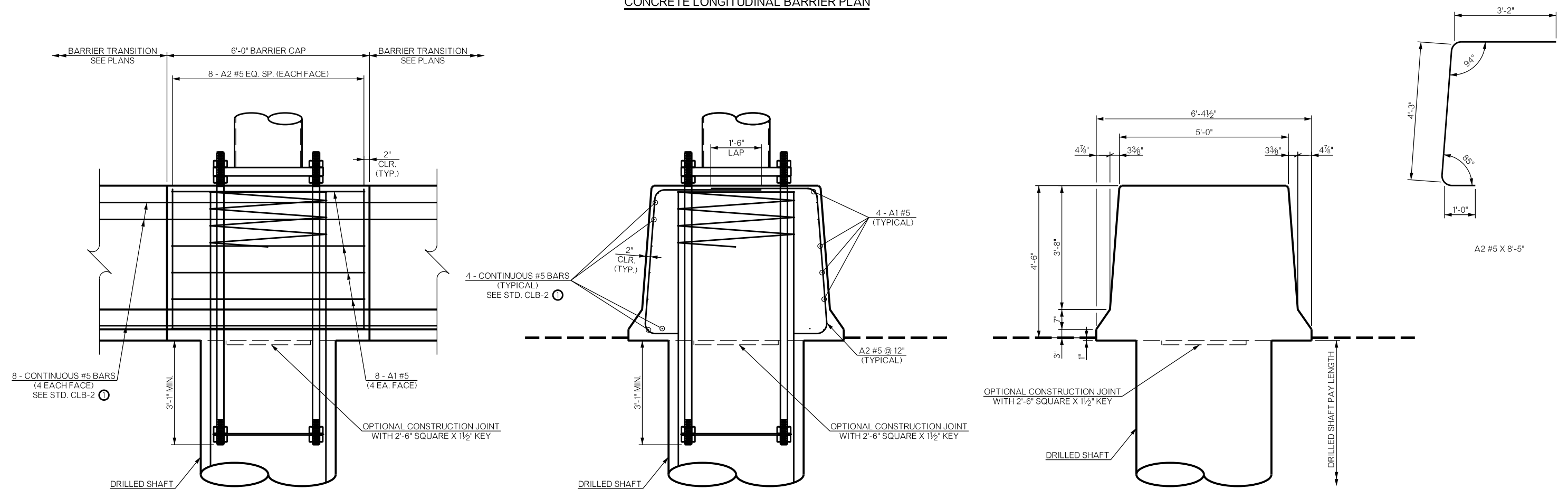


CONCRETE LONGITUDINAL BARRIER PLAN



BARRIER CAP ELEVATION

SECTION THRU BARRIER CAP

BARRIER CAP DETAIL

① ALL COSTS OF 8 - CONTINUOUS #5 BARS THROUGH THE BARRIER CAP ARE INCLUDED WITH THE REINFORCING STEEL QUANTITY FOR THE BARRIER CAP.

| BARRIER CAP QUANTITIES | | |
|------------------------|------|--------|
| ITEM | UNIT | TOTAL |
| CLASS AA CONCRETE | CY | 5.60 |
| REINFORCING STEEL | LB | 240.00 |

NOTE:
QUANTITIES SHOWN ABOVE ARE FOR THE BARRIER CAP ONLY. ALL COSTS OF THE CONCRETE BARRIER TRANSITION ARE INCLUDED IN THE UNIT PRICE PER LINEAR FOOT OF "CONCRETE LONGITUDINAL BARRIER."

| BARRIER CAP BAR LIST | | | | | |
|----------------------|------|-----|------|--------|------------------|
| MARK | SIZE | NO. | FORM | LENGTH | LENGTH VARIATION |
| PLAIN REINFORCING | | | | | |
| A1 | #5 | 8 | STR. | 5'-8" | |
| A2 | #5 | 16 | BNT. | 8'-5" | |

TRAFFIC ENGINEERING DIVISION STANDARD
OVERHEAD MONOTUBE SIGN STRUCTURE
BARRIER DETAILS

OKLAHOMA
Transportation

APPROVED BY TRAFFIC ENGINEERING DIVISION
AND BRIDGE DIVISION ON 8/4/2025

2019 SPECIFICATIONS

OMSSBD-11

T-155