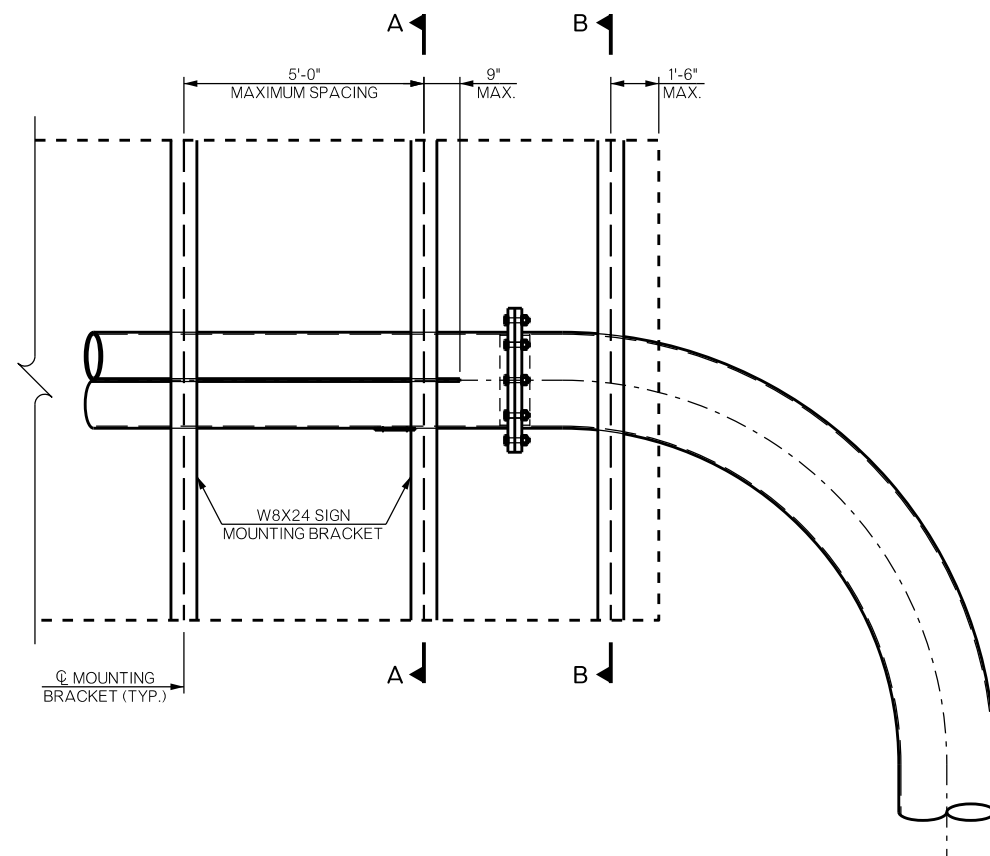
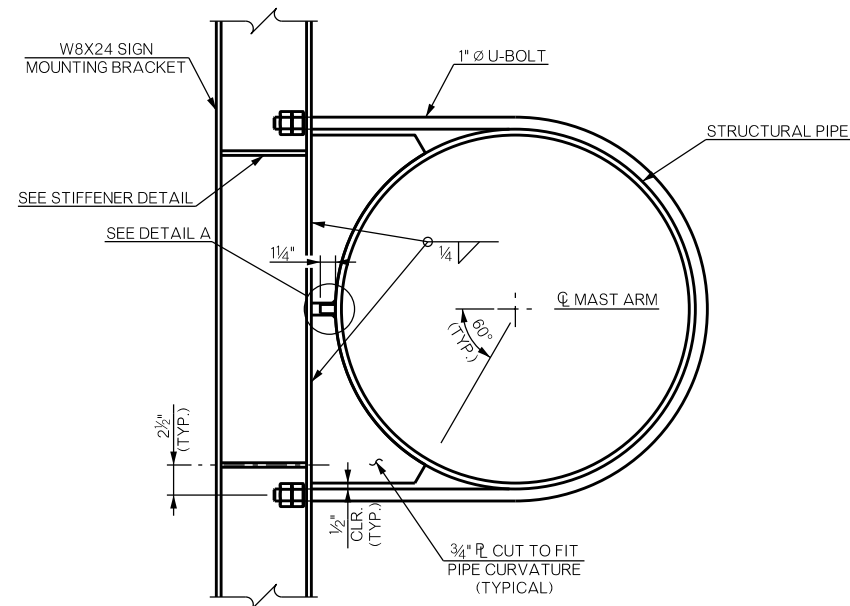


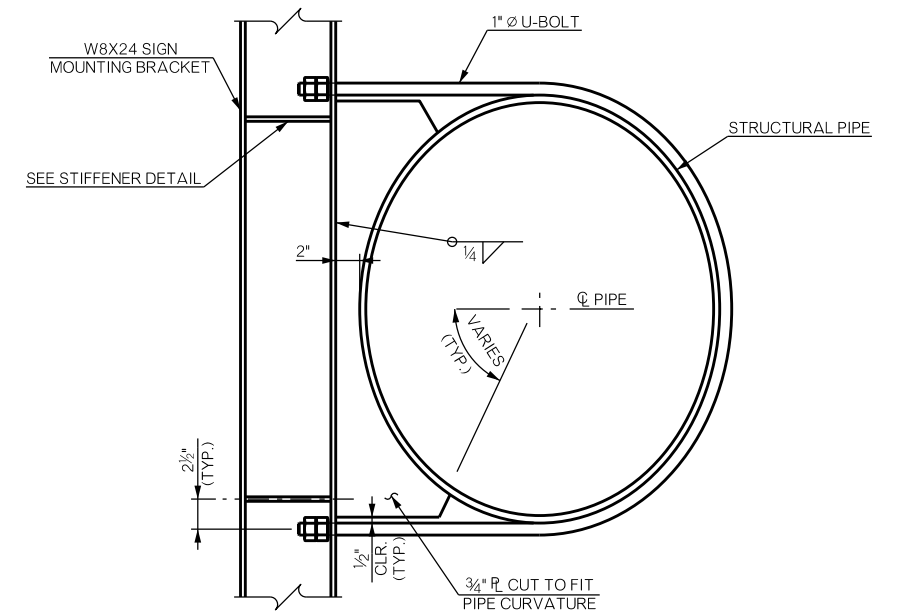
SIGN MOUNTING BRACKET PLAN



SIGN MOUNTING BRACKET DETAIL

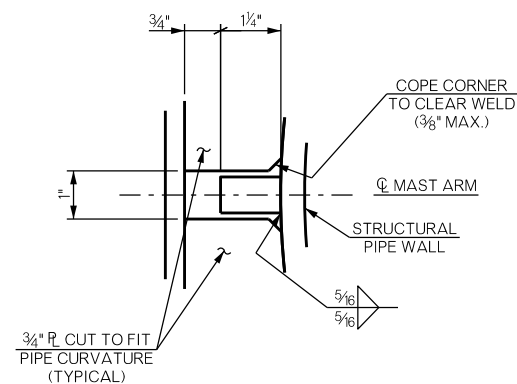


SECTION A-A

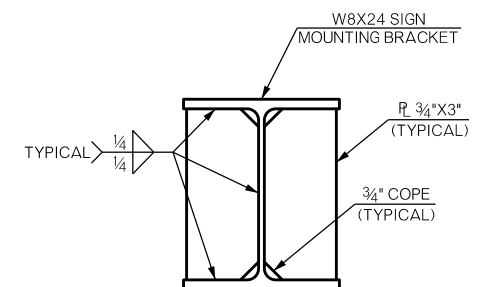


SECTION B-B

NOTE:
ALL U-BOLTS SHALL CONFORM TO THE MATERIAL SPECIFICATIONS OF ASTM 193-B7 AND THREADS SHALL CONFORM TO ASTM A325 SECTION 7.2. ALL U-BOLT NUTS SHALL BE PREVAILING-TORQUE LOCK NUTS AND SHALL CONFORM TO THE SPECIFICATION OF ASTM A194-2H. ALL WASHERS SHALL CONFORM TO THE SPECIFICATIONS OF ASTM F436.



DETAIL A



STIFFENER DETAIL



OKLAHOMA
Transportation

APPROVED BY TRAFFIC ENGINEERING DIVISION
AND BRIDGE DIVISION ON 8/4/2025

TRAFFIC ENGINEERING DIVISION STANDARD
OVERHEAD MONOTUBE SIGN STRUCTURE
BRACKET ASSEMBLY

2019 SPECIFICATIONS

OMSSBA-1 1

T-157