

**NBI # 10053
STRUCTURE NUMBER 6702-04.19X
COUNTY SEMINOLE
FACILITY CARRIED U.S. 270
FEATURE INTERSECTED CARTER CREEK
11/30/2017**



**NBI # 10053
STRUCTURE NUMBER 6702-04.19X
COUNTY SEMINOLE
FACILITY CARRIED U.S. 270
FEATURE INTERSECTED CARTER CREEK
11/30/2017**




NBI # 10053
STRUCTURE NUMBER 6702-04.19X
COUNTY SEMINOLE
FACILITY CARRIED U.S. 270
FEATURE INTERSECTED CARTER CREEK
11/30/2017
DRIFT @ THE NORTH END



**NBI # 10053
STRUCTURE NUMBER 6702-04.19X
COUNTY SEMINOLE
FACILITY CARRIED U.S. 270
FEATURE INTERSECTED CARTER CREEK
11/30/2017
N-E SHLD. DIPPING & RAIL OUT OF
ALIGNMENT DUE TO SETTLEMENT &
DETERIORATION**





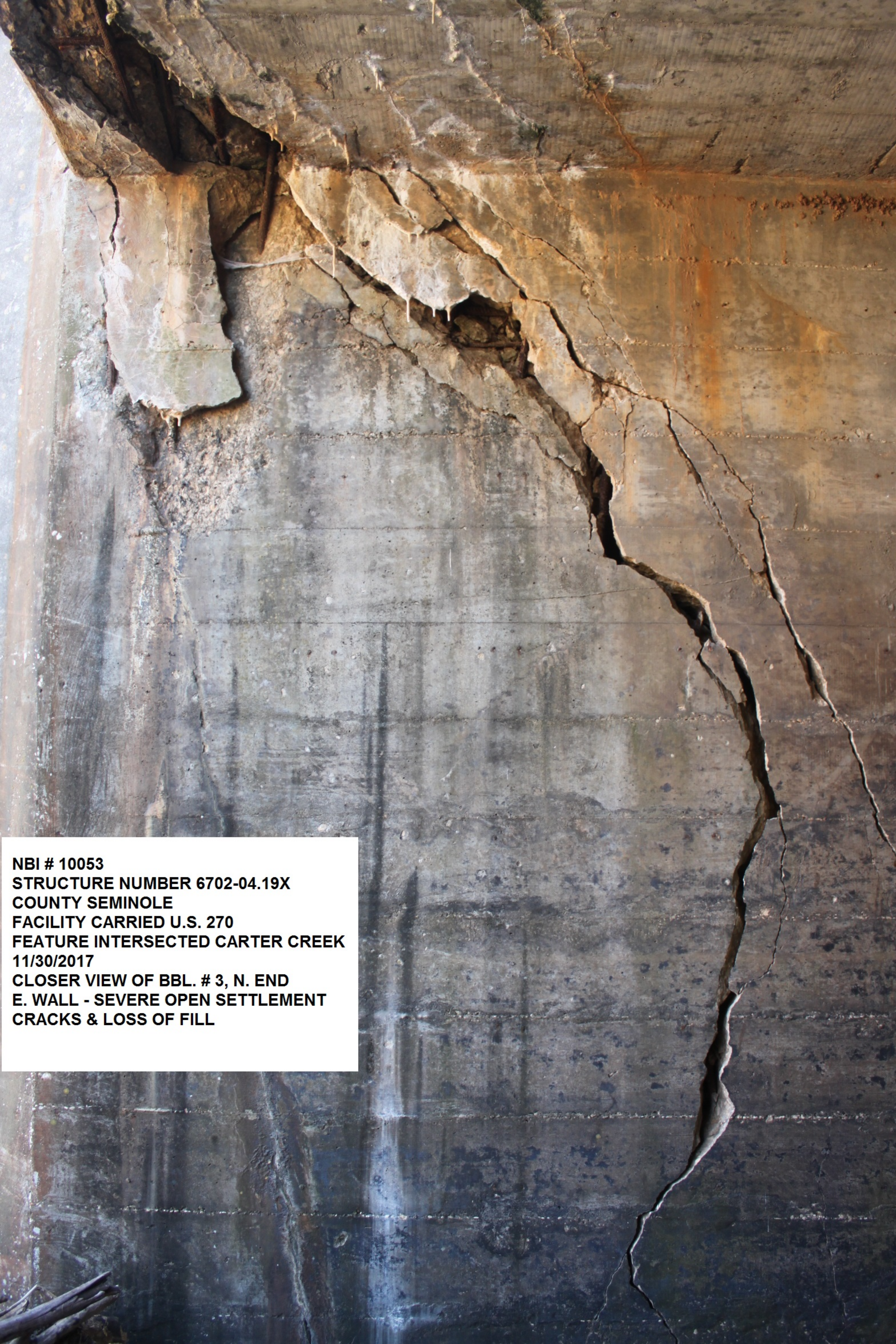
**NBI # 10053
STRUCTURE NUMBER 6702-04.19X
COUNTY SEMINOLE
FACILITY CARRIED U.S. 270
FEATURE INTERSECTED CARTER CREEK
11/30/2017
CRACKS W/ LEACHING & EFFLORESCENCE
@ BBL. # 1, S. END, W. WALL**

NBI # 10053
STRUCTURE NUMBER 6702-04.19X
COUNTY SEMINOLE
FACILITY CARRIED U.S. 270
FEATURE INTERSECTED CARTER CREEK
11/30/2017
N-E END OF PARAPET/HDWL
HEAVILY DETERIORATED





**NBI # 10053
STRUCTURE NUMBER 6702-04.19X
COUNTY SEMINOLE
FACILITY CARRIED U.S. 270
FEATURE INTERSECTED CARTER CREEK
11/30/2017
BBL. # 3, N. END, E. WALL
SEVERE OPEN SETTLEMENT CRACKS
TO CULVERT BBL. WALL**



**NBI # 10053
STRUCTURE NUMBER 6702-04.19X
COUNTY SEMINOLE
FACILITY CARRIED U.S. 270
FEATURE INTERSECTED CARTER CREEK
11/30/2017
CLOSER VIEW OF BBL. # 3, N. END
E. WALL - SEVERE OPEN SETTLEMENT
CRACKS & LOSS OF FILL**