

# Annual Review of Symlin®- Fiscal Year 2009

Oklahoma HealthCare Authority

April 2010

## Current Prior Authorization Criteria

---

Patients with type 1 and 2 diabetes using insulin must:

- a. Be using basal-bolus insulin regimen (basal insulin plus rapid acting with meals), and
- b. Have failed to achieve adequate glycemic control on a basal-bolus regimen or are gaining excessive weight on basal-bolus regimen, and
- c. Receiving ongoing care under the guidance of a health care professional.

Patients meeting the following criteria should **NOT** be considered for Symlin™ therapy

- a. poor compliance with insulin regimen
- b. poor compliance with self-blood glucose monitoring
- c. HbA1c>9%
- d. recurrent severe hypoglycemia requiring assistance in past 6 months
- e. presence of hypoglycemia unawareness
- f. diagnosis of gastroparesis
- g. require use of drugs that stimulate GI motility
- h. pediatric patients (<15 years old)

## Utilization of Symlin®

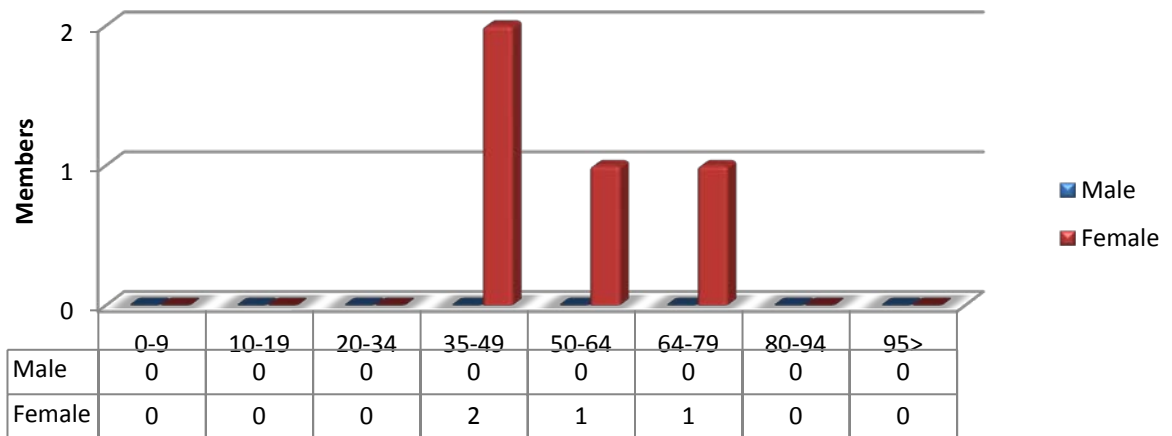
---

### Comparison of Fiscal Years

Fiscal Year	Members	Claims	Cost	Cost/Claim	Perdiem	Units	Days
2008	8	25	\$6,374.47	\$254.98	\$8.57	279	744
2009	4	15	\$6,402.97	\$426.86	\$15.21	211	421
Percent Change	-50%	-40%	0.4%	67.4%	77.5%	-24.4%	-43.4%
Change	-4	-10	\$28.50	\$171.88	\$6.64	-68	-323

Even though the number of members and claims decreased, the cost per claim increased significantly. This increase could be attributed to both an increase in cost of the medication and an increase in dosage used. Both the per diem cost and the units per day increased significantly from \$8.57 to \$15.21 and 0.38 to 0.50 respectively between FY08 and FY09.

### Demographics of Members Utilizing Symlin® FY 2009



There were a total of 16 petitions submitted for Symlin® during fiscal year 2009. The following chart shows the status of the submitted petitions:

Status	Total PA Count
Approved	3
Denied	4
Incomplete	9

### Conclusion and Recommendations

The College of Pharmacy recommends continuing the current criteria in place for Symlin®.