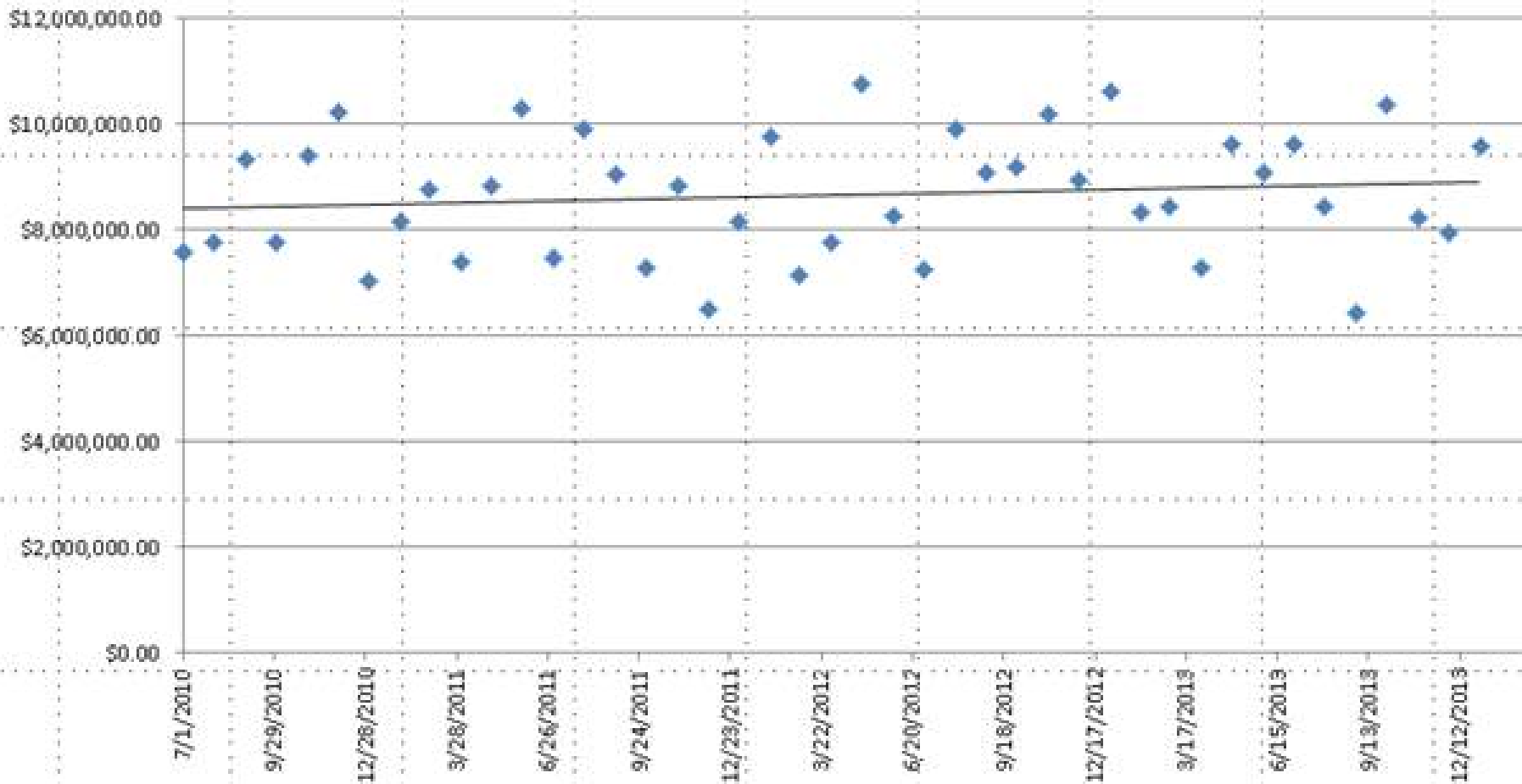


Paid by Month for last 18 months for H2017



Inpatient Behavioral Health

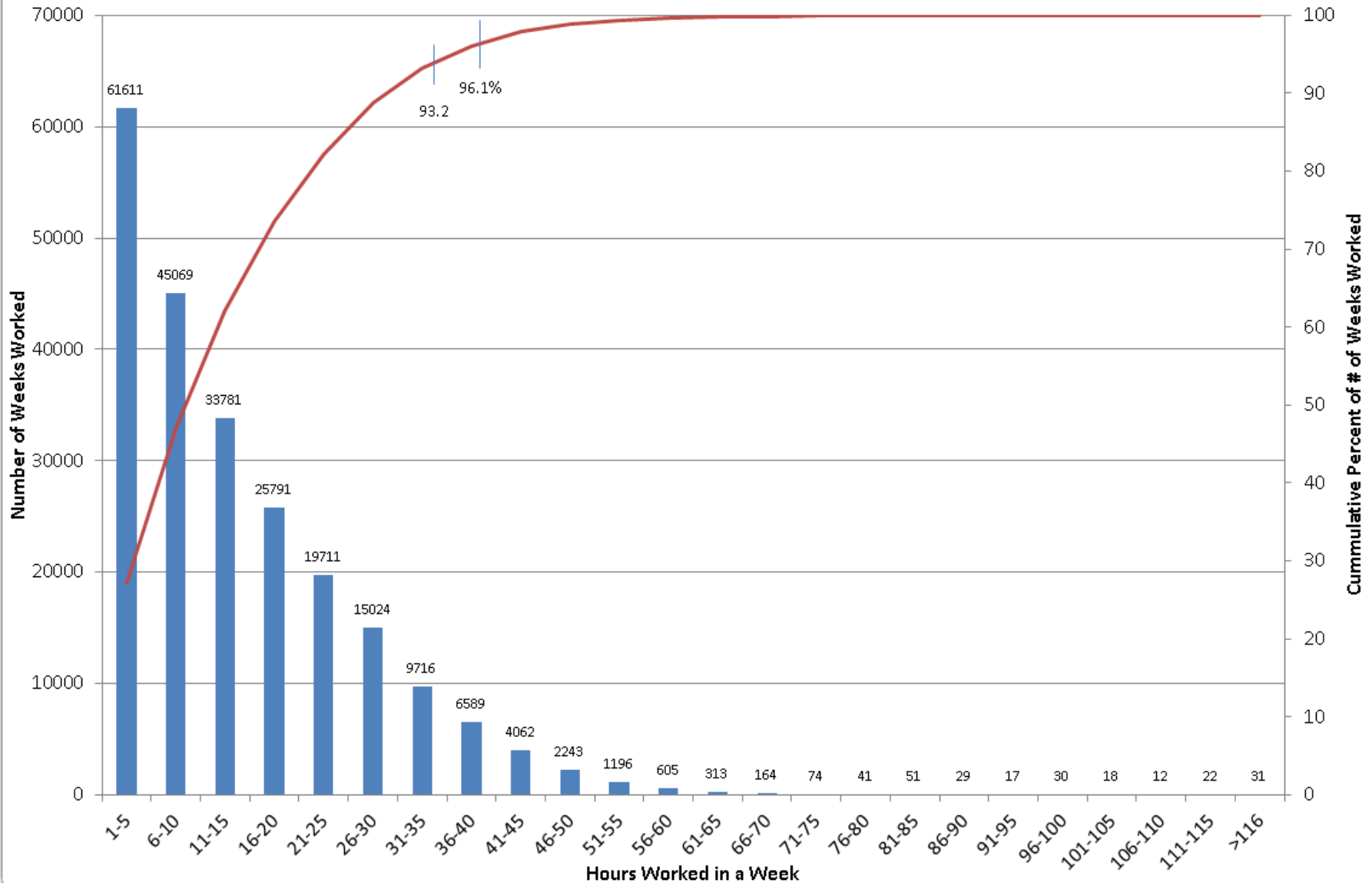
PaidByMonth



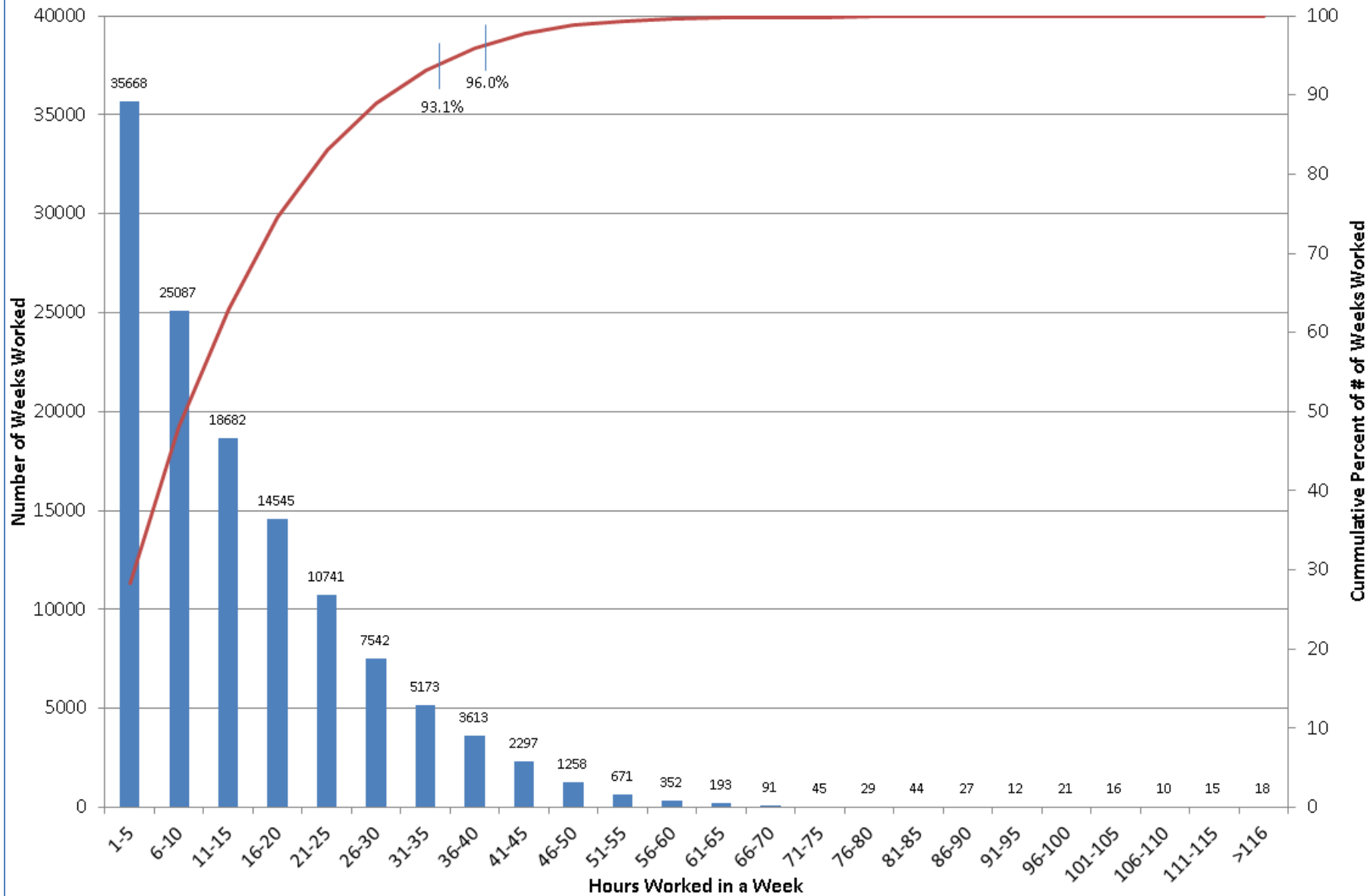
Limiting Billable Hours

- Using SFY 2013 utilization data, limiting billable hours to 40 would save an estimated \$8.5 million total dollars (federal + state).
- Limiting billable hours to 35 would save an estimated \$14.3 million total dollars (federal +state) in FY13.

Impact of 40 or 35 Billable Hours per week on LBHPs & Paraprofessionals



Impact of 40 or 35 Billable Hours per week on LBHPs



Impact of 40 or 35 Billable Hours per week on Paraprofessionals

