

---

# Health Policy Overview

---

Medical Advisory Committee  
November 2010



---

# Fall 2010

## Provider Training Overview

- ❖ Durant
    - ❖ 196 Providers Enrolled
  - ❖ Tulsa - 2 Days
    - ❖ 623 Providers Enrolled
  - ❖ Lawton
    - ❖ 140 Providers Enrolled
  - ❖ Oklahoma City - 2 Days
    - ❖ 741 Providers Enrolled
  - ❖ Total = 1,700 Providers Enrolled
-

---

Fall 2010

## Provider Training Overview

- ❖ Health Policy's Training Debut
    - ❖ Durant, 90 Providers
    - ❖ Tulsa, 296 Providers
    - ❖ Lawton, 69 Providers
    - ❖ Oklahoma City, 364 Providers
  - ❖ Total Health Policy Enrollment
    - ❖ 819 Total Providers
    - ❖ 50% Of All Enrolled Providers
  - ❖ More Transparency & Classes To Come!
-

---

Fall 2010

# Provider Training Overview

## ❖ Classes Offered:

- ❖ Adjustments
  - ❖ Third Party Liability
  - ❖ Health Policy
  - ❖ Behavioral Health
  - ❖ EPSDT, School-Based Services
  - ❖ Opportunities for Living Life, Waivers
  - ❖ Med Solutions, Radiology Management
  - ❖ Online Enrollment
  - ❖ Electronic Health Records
-

---

# Medicaid Programs

- ❖ Traditional Medicaid
  - ❖ Federal Law is Broad (Flexibility)
  - ❖ States Implementation (Adapt)
- ❖ Title XIX
  - ❖ Categorical Relation
    - ❖ Child
    - ❖ Pregnant
    - ❖ ABD
  - ❖ Mandatory Services
  - ❖ Optional Services
  - ❖ Statewide



# State Plan Process



- ❖ Required Section 1902 of the SSA
- ❖ 90 day approval by CMS
- ❖ Request for Additional Information (Clock Stops)
- ❖ State response to RAI (New 90 Day Clock)
- ❖ Approval/Denial
- ❖ Effective date retro to the first day of the quarter of the federal fiscal year in which it was submitted

# Policy Implications

- ❖ Need for Change
  - ❖ Mandate - State/Federal
  - ❖ New Service – Optional/ Mandatory
  - ❖ Revisions of Current Policy
  - ❖ Clarification
  - ❖ Expansion or Limitation of Current Services



---

# Budget Implications

- ❖ Monies Appropriated to OHCA
- ❖ Budget Request
- ❖ Grant Opportunities
- ❖ State Only
- ❖ Federal Match
- ❖ Not Funded





# Rule Types



## ❖ Emergency

- ❖ Processed while Legislature is out of session. Requires OHCA Board and Governor approval (Nov. 1st New Law)
  - ❖ Protect the public health, safety or welfare
  - ❖ Comply with deadlines in amendments to an agency's governing law or federal programs
  - ❖ Avoid violation of federal law or regulation or other state law
  - ❖ Avoid imminent reduction to the agency's budget
  - ❖ Avoid serious prejudice to the public interest

## ❖ Permanent

- ❖ Processed while Legislature is in session. Requires OHCA Board, Legislature and Governor approval

# Service Planning

- ❖ Research Change/Service
- ❖ Inter/External Collaborations
- ❖ Drafting of Rules
- ❖ Circulation & Approval of Rules (Internal/External)



---

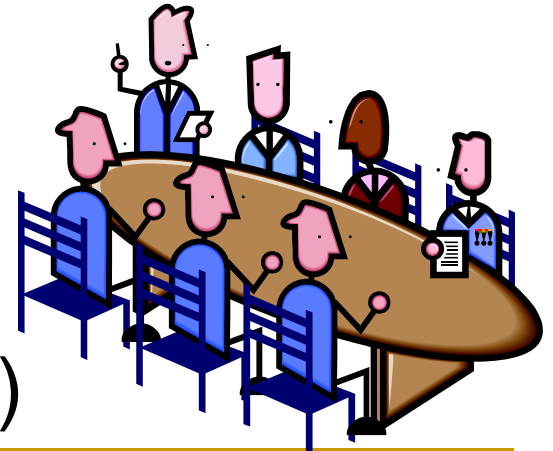
# Service Planning

- ❖ Internal & External Collaborations
    - ❖ Medical Advisory Committee
    - ❖ Behavioral Health Advisory Council
    - ❖ Child Health Advisory Task Force
    - ❖ Drug Utilization Review Board
    - ❖ Perinatal Task Force
    - ❖ Living Choice Advisory Committee
    - ❖ Durable Medical Equipment Advisory Council
-

---

# Public Process for Permanent Rule Changes

- ❖ Notice of Rule Making Intent (Perm. Rule)
- ❖ Public Hearing (Perm. Rule)
- ❖ Submittal to Medical Advisory Committee
- ❖ Submittal to OHCA Board
- ❖ Submittal to Governor (45 Days)



---

# Public Process for Permanent Rule Changes (Continued)

- ❖ Submittal to Legislature (30 Days)
- ❖ Publication in Oklahoma Register
- ❖ Final Adoption (10 Days)
- ❖ Rule Change Complete
- ❖ Implementation



---

# Federal Requirements

- ❖ Medical Advisory Committee (42 CFR 431.12)
- ❖ Tribal Consultation (Patient Protection and Affordable Care Act, P.L. 111-148, (PPACA))
- ❖ Notice of Changes to Methodology (42 CFR 447.205 )
- ❖ State Plan Authority (42 CFR 430.10)
- ❖ Waiver Authority (42 CFR 430.22)



---

# Federal Requirements

- ❖ Notice of Changes to Methodology (42 CFR 447.205 )
    - ❖ Required to publish with circulation of 50,000 or more:
      - ❖ Daily Oklahoman
      - ❖ Tulsa World
      - ❖ Lawton Constitution
      - ❖ Norman Transcript
      - ❖ Broken Arrow Ledger
-

---

# State Plan Amendment Rate Committee (SPARC)

- ❖ Conducts public hearings on the rate setting process and methodology for SoonerCare rates





---

# What To Look For

- ❖ Online Access to Proposed Rule Changes
- ❖ Going Green
  - ❖ Provider Letters will be sent one of three ways
    - ❖ Email
    - ❖ Fax
    - ❖ Secure Website



---

# Questions & Answers

