

OKLAHOMA HEALTH CARE AUTHORITY
REGULARLY SCHEDULED BOARD MEETING
December 12, 2013 at 1:00 P.M.
Saint Francis Health System
Education Center
6161 South Yale Avenue
Tulsa, Oklahoma

A G E N D A

Items to be presented by Ed McFall, Chairman

1. Call to Order / Determination of Quorum
2. Action Item – Approval of November 14, 2013 OHCA Board Minutes
3. Discussion Item – Reports to the Board by Board Committees
 - a) Audit/Finance Committee – Member Miller
 - b) Strategic Planning Committee – Vice-Chairman Armstrong
 - c) Personnel Committee – Chairman McFall

Item to be presented by Nico Gomez, Chief Executive Officer

4. Discussion Item – Chief Executive Officer's Report
 - a) Financial Update – Carrie Evans, Chief Financial Officer
 - b) Office Space Update – James Smith, Chief of Staff
 - c) Medicaid Director's Update – Garth Splinter, State Medicaid Director
 - 1) MyHealth Presentation – CEO David Kendrick, MD, MPH of MyHealth Access Network

Item to be presented by Connie Steffee, Reporting & Statistics Director

5. Discussion Item – Presentation of the 2013 Oklahoma Health Care Authority Annual Report

Item to be presented by Chairman McFall

6. Discussion Item – Proposed Executive Session as Recommended by the Director of Legal Services and Authorized by the Open Meetings Act, 25 Oklahoma Statutes § 307(B) (1), (4), (7) and (9)
 - a) Discussion of Pending Litigation, Investigations and Claims
7. Action Item – Consideration and Vote upon the Oklahoma Health Care Authority Board Meeting Dates, Times and Locations for Calendar Year 2014
8. New Business
9. ADJOURNMENT

NEXT BOARD MEETING
January 9, 2014
Oklahoma Health Care Authority
Ponca Conference Room
Oklahoma City, OK

MINUTES OF A REGULARLY SCHEDULED BOARD MEETING
OF THE HEALTH CARE AUTHORITY BOARD
November 14, 2013
Held at Oklahoma Health Care Authority
Oklahoma City, Oklahoma

Manner and Time of Notice of Meeting: A statutorily required public meeting notice was placed on the front door of the Oklahoma Health Care Authority on November 13, 2013, 10:30 a.m. Advance public meeting notice is provided to the Oklahoma Secretary of State. In addition to the posting of the statutory public notice, the agency placed its agenda on its website on November 12, 2013, 4:30 p.m.

Pursuant to a roll call of the members, a quorum was declared to be present, and Chairman McFall called the meeting to order at 1:02 p.m.

BOARD MEMBERS PRESENT:

Chairman McFall, Vice-Chairman Armstrong, Member Miller, Member Bryant, Member Nuttle, Member Robison, Member McVay

OTHERS PRESENT:

David Dude, American Cancer Society
Debbie Spaeth, Quest MHSAs
Jeannie Vigneron, OHCA
Lisa Spain, HP
Charles Brodt, HP
Lisa Gifford, OHCA
John Guthrie, OHCA
Ashley Neel, OMES
Robert Dorrell, BCBS OK

OTHERS PRESENT:

Traylor Rains, ODMHSAS
Trevlyn Cross, Chickasaw Nation
Della Gregg, OHCA
Will Widman, HP
Mary Brinkley, Leading Age OK
Michelle Ho, OHCA
Ziva Branstetter, Tulsa World
Lia Tepker, OMES

DISCUSSION AND POSSIBLE VOTE ON APPROVAL OF BOARD MINUTES OF THE REGULARY SCHEDULED BOARD MEETING HELD OCTOBER 10, 2013.

The Board routinely reviews and approves a synopsis of all its meetings. The full-length recordings of the meetings of the Board are retained at the Board Offices and may be reviewed upon written request.

MOTION:

Vice-Chairman Armstrong moved for approval of the October 10, 2013 board meeting minutes as published. The motion was seconded by Member Robison.

FOR THE MOTION:

Chairman McFall, Member Miller, Member Bryant, Member Nuttle, Member McVay

ITEM 3 / REPORTS TO THE BOARD BY BOARD COMMITTEES

Audit/Finance Committee

Member Miller stated that the Audit/Finance committee met and that they also met earlier in the month in which a list of budget reduction possibilities was reviewed. News from the federal government regarding the reduction in state matching that will come October 1st of next year seemed bleak but our staff has been working diligently in working on this issue and noted that he is encouraged after today's committee meeting. Member Miller noted that this is not just a Medicaid issue, but one that affects many programs and efforts and services that the state supplies, along with a societal problem as society changes. There is more understanding coming to light as more people become involved.

Strategic Planning Committee

Vice-Chairman Armstrong stated that the committee did meet and had a discussion relative to all of the activity that is being engaged in by staff. OHCA is trying to meet with and discuss as much as we can with all of the individuals that are involved at the state and federal level. He complimented staff for their effort and noted that we have a lot of work ahead of us and hopefully have some people join us at the table to face the common problems we have on our budget.

Legislative Committee

Chairman McFall stated that the committee met noted that he attended the legislative meeting in Tulsa last week and was a very productive meeting. Member of the house and senate attended the meeting and heard a presentation from Andy Cohen regarding how this program is being run and we are interacting with other programs. There are more meetings next week with the legislators to talk about what OHCA can do to work out our issues. He encouraged the board to attend any meetings they can.

ITEM 4 / CHIEF EXECUTIVE OFFICER'S REPORT

Nico Gomez, Chief Executive Officer

4a. ALL STARS INTRODUCTION

Nico Gomez, Chief Executive Officer

Mr. Gomez introduced OHCA Employee All-Stars for August through October 2013 as well as the Supervisor of the Quarter through his direct reports.

Dr. Splinter presented the August All Star – Tiffany Beck, Research Analyst, Electronic Health Operations
Lisa Gifford presented the September All Star – Michelle Ho, DP Analyst/Planning Specialist III, Contractor Systems
Carrie Evans presented the October All Star – Rob Guthrie, Finance Analyst, Third Party Liability
Becky Pasternik-Ikard presented the Supervisor of the Quarter – LaDawn Fulgenzi, Manager II, Provider Services

4b. FINANCIAL UPDATE

Carrie Evans, Chief Financial Officer

Ms. Evans reported on the financial transactions through the month of September with an \$18.7 million state dollar variance that is up \$16 million from last month, with the majority of that being \$15.6 in an unanticipated federal revenue. The unanticipated federal revenue involves the federal government closing out some various old accounts that have. In these accounts Oklahoma Medicaid is owed some federal reimbursement. She noted that we continue to run under budget for our program spending, we grew for a total of \$1.4 million for our program variance. We continue to be slightly under in administration and our revenue's continue to be slightly under. Ms. Evans predicted to be slightly under in Medicaid spending and administration for the month of October. For more detailed information, see Item 4b in the board packet.

4c. MEDICAID DIRECTOR'S UPDATE

Garth Splinter, State Medicaid Director

Dr. Splinter provided a report that included a report on the number of enrollees in the Medicaid Program, a historical analysis of enrollees in Medicaid or Soonercare, a report on the number of providers and a summary of the Electronic Health Records incentive program which provides financial support to increase the medical data collection infrastructure.

4c1. COMPREHENSIVE PRIMARY CARE PRESENTATION

Melody Anthony, Provider Services Director

Ms. Anthony presented the Comprehensive Primary Care initiative (CPCi). She noted that we were chosen for this grant with CMS, Blue Cross and Blue Shield and Community Care. For more detailed information, see Item 4c.1 in the board packet.

4d. SFY 15 Budget Request Update

Nico Gomez, Chief Executive Officer

Mr. Gomez noted that it is our responsibility to advise appropriators at the state capitol what it takes to fund this program. We also have a responsibility to taxpayers who fund the program to look for efficiencies. We heard last month about the federal matching rate going down. Mr. Gomez noted that if we are short any money on the first three items of the budget, we have to find a way to balance the budget for next fiscal year. The one time federal funding that Ms. Evans mentioned will be helpful, but Mr. Gomez believes it's our job to do everything we can to reduce what we need to in order to operate the program. As the budget is today, it will take another \$149 million above our current base. Mr. Gomez stated that he won't let the problem define how we react but use it to find a solution. He noted that we can't do this alone, and will need help from the board. He would like to start meeting with our provider partners to present our current budget situation and find efficiencies. Mr. Gomez feels very confident that our appropriators are going to very diligent about doing all they can to meet our requests but we will do everything we can also. For more detailed information, please see Item 4.d in the board packet.

ITEM 5 / SOONERCARE CHOICE PROGRAM INDEPENDENT EVALUATION BY PACIFIC HEALTH POLICY GROUP

Becky Pasternik-Ikard, Deputy State Medicaid Director

Ms. Pasternik-Ikard presented the SoonerCare Choice Program Independent Evaluation by Andrew Cohen at Pacific Health Policy Group. For more detailed information, please see Item 5 in the board packet.

ITEM 6 / ANNOUNCEMENTS OF CONFLICTS OF INTEREST PANEL RECOMMENDATIONS FOR ALL ACTION ITEMS

Howard Pallotta, General Counsel

There were no recommendations regarding conflicts.

ITEM 7 / CONSIDERATION AND VOTE UPON THE RECOMMENDATIONS OF THE STATE PLAN AMENDMENT RATE COMMITTEE.

Cindy Roberts, Chairperson of the State Plan Amendment Rate Committee

7. Action Items – Consideration and Vote Upon the Recommendations of the State Plan Amendment Rate Committee.
 - a) Consideration and Vote upon Recommendation to alter rate methodology for Psychiatric Residential Treatment Facility Reimbursement. The methodology change would create an **add-on payment for PRTF's**

that serve non-verbal children. This method change alters the rate paid only to non-verbal children served in facilities.

- b) Consideration and Vote upon Recommendation to alter the rates paid for Anesthesiologist Services as follows:
- (1) an **increase for the conversion factor from \$31.48/\$31.50 to \$39.00 for CPT codes 00100-001966 and 01968 to 01999,**
 - (2) an **increase to the flat rate under CPT 01967 from \$411.19 to \$550.00.**

MOTION: Member Miller moved for approval of Item 7a as presented. The motion was seconded by Member McVay.

FOR THE MOTION: Chairman McFall, Vice-Chairman Armstrong, Member Robison, Member Nuttle, Member Bryant

MOTION: Vice-Chairman Armstrong moved for approval of Item 7.b-1 and 7.b-2 as presented. The motion was seconded by Member Nuttle.

FOR THE MOTION: Chairman McFall, Member Miller, Member Robison, Member McVay, Member Bryant

ITEM 8 / PROPOSED EXECUTIVE SESSION AS RECOMMENDED BY THE DIRECTOR OF LEGAL SERVICES AND AUTHORIZED BY THE OPEN MEETINGS ACT, 25 OKLAHOMA STATUTES §307(B) (1), (4), AND (7).

Howard Pallotta, General Counsel

Chairman McFall entertained a motion to go into Executive Session at this time.

MOTION: Vice-Chairman Armstrong moved for approval to go into Executive Session. The motion was seconded by Member Bryant.

FOR THE MOTION: Chairman McFall, Vice-Chairman Armstrong, Member Miller, Member Nuttle, Member McVay

9. Discussion Item – Proposed Executive Session as Recommended by the Director of Legal Services and Authorized by the Open Meetings Act, 25 Oklahoma Statutes § 307(B) (1), (4), (7) and (9)

- a) Discussion of Pending Litigation, Investigations and Claims

ITEM 9 / NEW BUSINESS

There was no new business.

ITEM 10 / ADJOURNMENT

MOTION: Vice-Chairman Armstrong moved for adjournment. The motion was seconded by Member McVay.

FOR THE MOTION: Chairman McFall, Member Miller, Member Nuttle, Member Bryant, Member Robison

Meeting adjourned at 2:49 p.m., 11/14/2013

NEXT BOARD MEETING
December 12, 2013
Saint Francis Health System
Tulsa, Oklahoma

Lindsey Bateman
Board Secretary

Minutes Approved: _____

Initials: _____



FINANCIAL REPORT

For the Four Months Ended October 31, 2013
Submitted to the CEO & Board

- Revenues for OHCA through October, accounting for receivables, were **\$1,399,821,270** or **.6% over** budget.
- Expenditures for OHCA, accounting for encumbrances, were **\$1,342,462,737** or **1% under** budget.
- The state dollar budget variance through October is **\$22,753,652 positive**.
- The budget variance is primarily attributable to the following (in millions):

Expenditures:		
Medicaid Program Variance	3.5	
Administration	2.9	
Revenues:		
Unanticipated Revenue	15.7	
Drug Rebate	1.0	
Taxes and Fees	(.2)	
Overpayments/Settlements	(.1)	
Total FY 14 Variance	\$ 22.8	

ATTACHMENTS

Summary of Revenue and Expenditures: OHCA	1
Medicaid Program Expenditures by Source of Funds	2
Other State Agencies Medicaid Payments	3
Fund 205: Supplemental Hospital Offset Payment Program Fund	4
Fund 230: Quality of Care Fund Summary	5
Fund 245: Health Employee and Economy Act Revolving Fund	6
Fund 250: Belle Maxine Hilliard Breast and Cervical Cancer Treatment Revolving Fund	7

OKLAHOMA HEALTH CARE AUTHORITY
Summary of Revenues & Expenditures: OHCA
Fiscal Year 2014, For the Four Months Ended October 31, 2013

REVENUES	FY14 Budget YTD	FY14 Actual YTD	Variance	% Over/ (Under)
State Appropriations	\$ 326,528,934	\$ 326,528,934	\$ -	0.0%
Federal Funds	685,911,416	676,906,697	(9,004,720)	(1.3)%
Tobacco Tax Collections	19,065,838	18,748,201	(317,637)	(1.7)%
Quality of Care Collections	27,079,588	27,079,588	-	0.0%
Prior Year Carryover	41,811,007	41,811,007	-	0.0%
Unanticipated Revenue	-	15,683,810	15,683,810	100.0%
Federal Deferral - Interest	80,224	80,224	-	0.0%
Drug Rebates	77,066,170	79,711,937	2,645,767	3.4%
Medical Refunds	16,186,421	16,080,863	(105,558)	(0.7)%
SHOPP	192,864,246	192,864,246	-	0.0%
Other Revenues	4,211,731	4,325,763	114,032	2.7%
TOTAL REVENUES	\$ 1,390,805,576	\$ 1,399,821,270	\$ 9,015,695	0.6%

EXPENDITURES	FY14 Budget YTD	FY14 Actual YTD	Variance	% (Over)/ Under
ADMINISTRATION - OPERATING	\$ 17,623,077	\$ 15,538,833	\$ 2,084,244	11.8%
ADMINISTRATION - CONTRACTS	\$ 36,500,633	\$ 31,688,157	\$ 4,812,476	13.2%
MEDICAID PROGRAMS				
<u>Managed Care:</u>				
SoonerCare Choice	11,978,056	11,305,665	672,391	5.6%
<u>Acute Fee for Service Payments:</u>				
Hospital Services	322,279,753	321,840,101	439,653	0.1%
Behavioral Health	7,567,302	7,429,377	137,925	1.8%
Physicians	171,990,909	171,104,780	886,129	0.5%
Dentists	50,823,700	50,716,813	106,887	0.2%
Other Practitioners	15,448,186	15,261,902	186,284	1.2%
Home Health Care	7,691,421	7,195,205	496,216	6.5%
Lab & Radiology	22,635,300	21,918,410	716,890	3.2%
Medical Supplies	17,184,477	16,232,099	952,378	5.5%
Ambulatory/Clinics	40,109,296	39,614,454	494,842	1.2%
Prescription Drugs	142,361,998	142,040,107	321,892	0.2%
OHCA TFC	711,098	640,025	71,073	0.0%
<u>Other Payments:</u>				
Nursing Facilities	197,072,688	196,791,687	281,001	0.1%
ICF-MR Private	20,692,681	20,361,110	331,571	1.6%
Medicare Buy-In	45,282,329	45,172,200	110,129	0.2%
Transportation	21,187,124	20,849,320	337,805	1.6%
MFP-OHCA	561,859	383,421	178,438	0.0%
EHR-Incentive Payments	4,333,083	4,333,083	-	0.0%
Part D Phase-In Contribution	26,140,462	26,110,110	30,352	0.1%
SHOPP payments	175,935,878	175,935,878	-	0.0%
Total OHCA Medical Programs	1,301,987,602	1,295,235,747	6,751,855	0.5%
OHCA Non-Title XIX Medical Payments	89,382	-	89,382	0.0%
TOTAL OHCA	\$ 1,356,200,694	\$ 1,342,462,737	\$ 13,737,957	1.0%
REVENUES OVER/(UNDER) EXPENDITURES	\$ 34,604,882	\$ 57,358,533	\$ 22,753,652	

OKLAHOMA HEALTH CARE AUTHORITY
Total Medicaid Program Expenditures
by Source of State Funds
Fiscal Year 2014, For the Four Months Ended October 31, 2013

Category of Service	Total	Health Care Authority	Quality of Care Fund	HEEIA	Medicaid Program Fund	BCC Revolving Fund	Other State Agencies
SoonerCare Choice	\$ 11,455,362	\$ 11,299,727	\$ -	\$ 149,697	\$ -	\$ 5,938	\$ -
Inpatient Acute Care	231,905,433	208,059,481	162,229	3,836,052	16,913,900	801,674	2,132,098
Outpatient Acute Care	99,815,995	94,320,855	13,868	3,913,178	-	1,568,095	-
Behavioral Health - Inpatient	8,508,503	4,496,559	-	226,925	-	-	3,785,019
Behavioral Health - Psychiatrist	2,932,818	2,932,818	-	-	-	-	-
Behavioral Health - Outpatient	8,713,989	-	-	-	-	-	8,713,989
Behavioral Health Facility- Rehab	92,883,453	-	-	-	-	36,319	92,883,453
Behavioral Health - Case Management	3,233,125	-	-	-	-	-	3,233,125
Behavioral Health - PRTF	32,642,178	-	-	-	-	-	32,642,178
Residential Behavioral Management	6,888,301	-	-	-	-	-	6,888,301
Targeted Case Management	21,887,234	-	-	-	-	-	21,887,234
Therapeutic Foster Care	640,025	640,025	-	-	-	-	-
Physicians	191,252,409	146,299,126	19,367	5,067,849	22,633,899	2,152,388	15,079,781
Dentists	50,752,007	48,049,866	-	35,194	2,657,784	9,164	-
Mid Level Practitioners	1,300,076	1,272,180	-	26,887	-	1,009	-
Other Practitioners	14,093,474	13,490,616	148,788	104,761	345,269	4,041	-
Home Health Care	7,195,238	7,187,891	-	33	-	7,314	-
Lab & Radiology	23,274,419	21,670,903	-	1,356,009	-	247,508	-
Medical Supplies	16,481,361	15,309,413	903,845	249,261	-	18,841	-
Clinic Services	42,044,775	36,235,169	-	529,931	-	101,147	5,178,527
Ambulatory Surgery Centers	3,462,251	3,270,613	-	184,114	-	7,525	-
Personal Care Services	4,686,633	-	-	-	-	-	4,686,633
Nursing Facilities	196,791,687	110,953,546	72,029,581	-	13,800,237	8,323	-
Transportation	20,758,911	18,781,501	889,680	-	1,067,496	20,234	-
GME/IME/DME	58,227,241	-	-	-	-	-	58,227,241
ICF/MR Private	20,361,110	16,321,950	3,754,120	-	285,040	-	-
ICF/MR Public	16,722,293	-	-	-	-	-	16,722,293
CMS Payments	71,282,310	71,007,614	274,696	-	-	-	-
Prescription Drugs	148,968,363	125,661,917	-	6,928,257	15,745,682	632,507	-
Miscellaneous Medical Payments	90,488	86,790	-	79	-	3,619	-
Home and Community Based Waiver	59,026,871	-	-	-	-	-	59,026,871
Homeward Bound Waiver	31,156,965	-	-	-	-	-	31,156,965
Money Follows the Person	2,230,980	383,421	-	-	-	-	1,847,559
In-Home Support Waiver	8,309,390	-	-	-	-	-	8,309,390
ADvantage Waiver	63,712,483	-	-	-	-	-	63,712,483
Family Planning/Family Planning Waiver	4,437,792	-	-	-	-	-	4,437,792
Premium Assistance*	16,552,754	-	-	16,552,754	-	-	-
EHR Incentive Payments	4,333,083	4,333,083	-	-	-	-	-
SHOPP Payments**	175,935,878	175,935,878	-	-	-	-	-
Total Medicaid Expenditures	\$ 1,774,947,657	\$ 962,065,064	\$ 78,196,173	\$ 39,160,980	\$ 73,449,308	\$ 5,625,643	\$ 440,550,930

* Includes \$16,431,935 paid out of Fund 245 and **\$175,935,878 paid out of Fund 205

OKLAHOMA HEALTH CARE AUTHORITY
Summary of Revenues & Expenditures:
Other State Agencies
Fiscal Year 2014, For the Four Months Ended October 31, 2013

REVENUE	FY14 Actual YTD
Revenues from Other State Agencies	\$ 176,684,159
Federal Funds	283,496,657
TOTAL REVENUES	\$ 460,180,816
EXPENDITURES	Actual YTD
Department of Human Services	
Home and Community Based Waiver	\$ 59,026,871
Money Follows the Person	1,847,559
Homeward Bound Waiver	31,156,965
In-Home Support Waivers	8,309,390
ADvantage Waiver	63,712,483
ICF/MR Public	16,722,293
Personal Care	4,686,633
Residential Behavioral Management	5,078,405
Targeted Case Management	16,759,044
Total Department of Human Services	207,299,641
State Employees Physician Payment	
Physician Payments	15,079,781
Total State Employees Physician Payment	15,079,781
Education Payments	
Graduate Medical Education	21,422,222
Graduate Medical Education - PMTC	1,655,830
Indirect Medical Education	31,088,706
Direct Medical Education	4,060,483
Total Education Payments	58,227,241
Office of Juvenile Affairs	
Targeted Case Management	1,103,736
Residential Behavioral Management	1,809,896
Total Office of Juvenile Affairs	2,913,631
Department of Mental Health	
Case Management	3,233,125
Inpatient Psych FS	3,785,019
Outpatient	8,713,989
PRTF	32,642,178
Rehab	92,883,453
Total Department of Mental Health	141,257,765
State Department of Health	
Children's First	813,170
Sooner Start	989,709
Early Intervention	2,125,110
EPSDT Clinic	753,029
Family Planning	(108,980)
Family Planning Waiver	4,535,527
Maternity Clinic	19,942
Total Department of Health	9,127,506
County Health Departments	
EPSDT Clinic	312,141
Family Planning Waiver	11,245
Total County Health Departments	323,386
State Department of Education	39,875
Public Schools	1,046,300
Medicare DRG Limit	-
Native American Tribal Agreements	3,103,706
Department of Corrections	682,688
JD McCarty	1,449,409
Total OSA Medicaid Programs	\$ 440,550,930
OSA Non-Medicaid Programs	\$ 27,077,836
Accounts Receivable from OSA	\$ 7,447,949

OKLAHOMA HEALTH CARE AUTHORITY
SUMMARY OF REVENUES & EXPENDITURES:
Fund 205: Supplemental Hospital Offset Payment Program Fund
Fiscal Year 2014, For the Four Months Ended October 31, 2013

REVENUES	FY 14 Revenue
SHOPP Assessment Fee	\$ 80,188,578
Federal Draws	112,617,051
Interest	57,075
Penalties	1,542
State Appropriations	(15,200,000)
TOTAL REVENUES	\$ 177,664,246

EXPENDITURES	Quarter	Quarter	FY 14 Expenditures
	7/1/13 - 9/30/13	10/1/13 - 12/31/13	
Program Costs:			
Hospital - Inpatient Care	76,710,371	81,236,442	\$ 157,946,813
Hospital -Outpatient Care	2,748,407	2,815,812	\$ 5,564,219
Psychiatric Facilities-Inpatient	5,785,055	6,128,236	\$ 11,913,291
Rehabilitation Facilities-Inpatient	248,410	263,146	\$ 511,556
Total OHCA Program Costs	85,492,242	90,443,636	\$ 175,935,878

Total Expenditures	\$ 175,935,878
---------------------------	-----------------------

CASH BALANCE	\$ 1,728,368
---------------------	---------------------

OKLAHOMA HEALTH CARE AUTHORITY
SUMMARY OF REVENUES & EXPENDITURES:
Fund 230: Nursing Facility Quality of Care Fund
Fiscal Year 2014, For the Four Months Ended October 31, 2013

REVENUES	Total Revenue	State Share
Quality of Care Assessment	\$ 26,128,720	\$ 26,128,720
Interest Earned	15,630	15,630
TOTAL REVENUES	\$ 26,144,350	\$ 26,144,350

EXPENDITURES	FY 14 Total \$ YTD	FY 14 State \$ YTD	Total State \$ Cost
Program Costs			
NF Rate Adjustment	\$ 70,785,797	\$ 25,482,887	
Eyeglasses and Dentures	96,203	34,633	
Personal Allowance Increase	1,147,580	413,129	
Coverage for DME and supplies	903,845	325,384	
Coverage of QMB's	344,252	123,931	
Part D Phase-In	274,696	274,696	
ICF/MR Rate Adjustment	1,881,088	677,192	
Acute/MR Adjustments	1,873,031	674,291	
NET - Soonerride	889,680	320,285	
Total Program Costs	\$ 78,196,173	\$ 28,326,428	\$ 28,326,428
Administration			
OHCA Administration Costs	\$ 144,593	\$ 72,296	
PHBV - QOC Exp	-	-	
OSDH-NF Inspectors	-	-	
Mike Fine, CPA	-	-	
Total Administration Costs	\$ 144,593	\$ 72,296	\$ 72,296
Total Quality of Care Fee Costs	\$ 78,340,765	\$ 28,398,724	
TOTAL STATE SHARE OF COSTS			\$ 28,398,724

Note: Expenditure amounts are for informational purposes only. Actual payments are made from Fund 340. Revenues deposited into the fund are transferred to Fund 340 to support the costs, not to exceed the calculated state share amount.

OKLAHOMA HEALTH CARE AUTHORITY

SUMMARY OF REVENUES & EXPENDITURES:

**Fund 245: Health Employee and Economy Improvement Act Revolving Fund
Fiscal Year 2014, For the Four Months Ended October 31, 2013**

REVENUES	FY 13 Carryover	FY 14 Revenue	Total Revenue
Prior Year Balance	\$ 10,427,850	\$ -	\$ 3,389,402
State Appropriations	-	-	(3,000,000)
Tobacco Tax Collections	-	15,419,680	15,419,680
Interest Income	-	81,034	81,034
Federal Draws	176,996	10,216,116	10,216,116
All Kids Act	(6,883,932)	99,572	99,572
TOTAL REVENUES	\$ 3,720,914	\$ 25,816,402	\$ 26,106,232

EXPENDITURES	FY 13 Expenditures	FY 14 Expenditures	Total \$ YTD
Program Costs:			
Employer Sponsored Insurance		\$ 16,206,269	\$ 16,206,269
College Students		120,819	120,819
All Kids Act		225,665	225,665
Individual Plan			
SoonerCare Choice		\$ 143,634	\$ 51,708
Inpatient Hospital		3,826,096	1,377,394
Outpatient Hospital		3,844,282	1,383,942
BH - Inpatient Services-DRG		218,637	78,709
BH -Psychiatrist		-	-
Physicians		5,012,252	1,804,411
Dentists		24,255	8,732
Mid Level Practitioner		26,501	9,540
Other Practitioners		101,164	36,419
Home Health		33	12
Lab and Radiology		1,340,300	482,508
Medical Supplies		246,554	88,759
Clinic Services		519,309	186,951
Ambulatory Surgery Center		183,745	66,148
Prescription Drugs		6,858,350	2,469,006
Miscellaneous Medical		79	79
Premiums Collected		-	(749,609)
Total Individual Plan		\$ 22,345,189	\$ 7,294,709
College Students-Service Costs		\$ 212,303	\$ 76,429
All Kids Act- Service Costs		\$ 50,735	\$ 18,265
Total OHCA Program Costs		\$ 39,160,980	\$ 23,942,156
Administrative Costs			
Salaries	\$ 7,360	\$ 362,458	\$ 369,818
Operating Costs	56,861	197,242	254,103
Health Dept-Postponing	-	-	-
Contract - HP	267,291	327,550	594,841
Total Administrative Costs	\$ 331,512	\$ 887,250	\$ 1,218,761
Total Expenditures			\$ 25,160,918
NET CASH BALANCE	\$ 3,389,402		\$ 945,314

**OKLAHOMA HEALTH CARE AUTHORITY
SUMMARY OF REVENUES & EXPENDITURES:**

**Fund 250: Belle Maxine Hilliard Breast and Cervical Cancer Treatment Revolving Fund
Fiscal Year 2014, For the Four Months Ended October 31, 2013**

REVENUES	FY 14 Revenue	State Share
Tobacco Tax Collections	\$ 307,752	\$ 307,752
TOTAL REVENUES	\$ 307,752	\$ 307,752

EXPENDITURES	FY 14 Total \$ YTD	FY 14 State \$ YTD	Total State \$ Cost
Program Costs			
SoonerCare Choice	\$ 5,938	\$ 1,496	
Inpatient Hospital	801,674	202,022	
Outpatient Hospital	1,568,095	395,160	
Inpatient Services-DRG	-	-	
Psychiatrist	-	-	
TFC-OHCA	-	-	
Nursing Facility	8,323	2,097	
Physicians	2,152,388	542,402	
Dentists	9,164	2,309	
Mid-level Practitioner	1,009	254	
Other Practitioners	4,041	1,018	
Home Health	7,314	1,843	
Lab & Radiology	247,508	62,372	
Medical Supplies	18,841	4,748	
Clinic Services	101,147	25,489	
Ambulatory Surgery Center	7,525	1,896	
Prescription Drugs	632,507	159,392	
Transportation	20,234	5,099	
Miscellaneous Medical	3,619	912	
Total OHCA Program Costs	\$ 5,589,324	\$ 1,408,510	
OSA DMHSAS Rehab	\$ 36,319	\$ 9,152	
Total Medicaid Program Costs	\$ 5,625,643	\$ 1,417,662	
TOTAL STATE SHARE OF COSTS			\$ 1,417,662

Note: Expenditure amounts are for informational purposes only. Actual payments are made from Fund 340. Revenues deposited into the fund are transferred to Fund 340 to support the costs, not to exceed the calculated state share amount.

Future Home of Oklahoma Health Care Authority



Construction By:



G & S Construction
Group, Inc.

Financed By:



SNB

Architectural Design By:



Development By:



TANNENBAUM
HOLDINGS















































SoonerCare Programs

October 2013 Data for December 2013 Board Meeting

SOONERCARE ENROLLMENT/EXPENDITURES

Delivery System	Monthly Enrollment Average SFY2013	Enrollment October 2013	Total Expenditures October 2013	Average Dollars Per Member Per Month October 2013
SoonerCare Choice Patient-Centered Medical Home	513,315	553,455	\$158,442,378	
<i>Lower Cost</i> (Children/Parents; Other)		507,006	\$115,702,140	\$228
<i>Higher Cost</i> (Aged, Blind or Disabled; TEFRA; BCC & HCBS Waiver)		46,449	\$42,740,238	\$920
SoonerCare Traditional	217,231	194,746	\$233,715,950	
<i>Lower Cost</i> (Children/Parents; Other)		86,674	\$62,871,930	\$725
<i>Higher Cost</i> (Aged, Blind or Disabled; TEFRA; BCC & HCBS Waiver)		108,072	\$170,844,019	\$1,581
SoonerPlan	48,346	52,329	\$1,091,905	\$21
Insure Oklahoma	30,202	28,099	\$10,442,335	
<i>Employer-Sponsored Insurance</i>	16,644	15,295	\$4,227,381	\$276
<i>Individual Plan</i>	13,559	12,804	\$6,214,955	\$485
TOTAL	809,094	828,629	\$403,692,567	

The enrollment totals above include all members enrolled during the report month; therefore, some members may not have expenditure data. Custody expenditures are excluded. Non-member specific expenditures of \$161,154,800 are excluded.

Net Enrollee Count Change from Previous Month Total	1,210
--	--------------

New Enrollees	19,095
----------------------	---------------

Members that have not been enrolled in the past 6 months.

Dual Enrollees & Long-Term Care Members (subset of data above)

Medicare and SoonerCare	Monthly Average SFY2013	Enrolled October 2013
Dual Enrollees	108,514	109,792
<i>Child</i>	201	205
<i>Adult</i>	108,313	109,587

	Monthly Average SFY2013	Enrolled October 2013	FACILITY PER MEMBER PER MONTH
Long-Term Care Members	15,674	15,473	\$4,239
<i>Child</i>	64	68	
<i>Adult</i>	15,610	15,405	

Child is defined as an individual under the age of 21.

SOONERCARE CONTRACTED PROVIDER INFORMATION

Provider Counts	Monthly Average SFY2013	Enrolled October 2013
Total Providers	36,948	38,111
<i>In-State</i>	28,587	29,120
<i>Out-of-State</i>	8,362	8,991

Provider Network includes providers who are contracted to provide health care services by locations, programs, types, and specialties. Providers are being counted multiple times if they have multiple locations, programs, types, and specialties.

Program	% of Capacity Used
SoonerCare Choice	45%
SoonerCare Choice I/T/U	17%
Insure Oklahoma IP	3%

Select Provider Type Counts	In-State		Totals	
	Monthly Average SFY2013	Enrolled October 2013*	Monthly Average SFY2013	Enrolled October 2013
Physician	7,859	8,466	12,432	13,408
Pharmacy	901	924	1,208	1,250
Mental Health Provider**	5,811	4,664	5,880	4,699
Dentist**	1,205	933	1,380	1,026
Hospital**	194	182	923	627
Optometrist	578	562	612	590
Extended Care Facility	362	357	362	357

Above counts are for specific provider types and are not all-inclusive.

Total Primary Care Providers***	4,997	5,463	6,541	7,129
Patient-Centered Medical Home	1,935	2,139	1,985	2,232

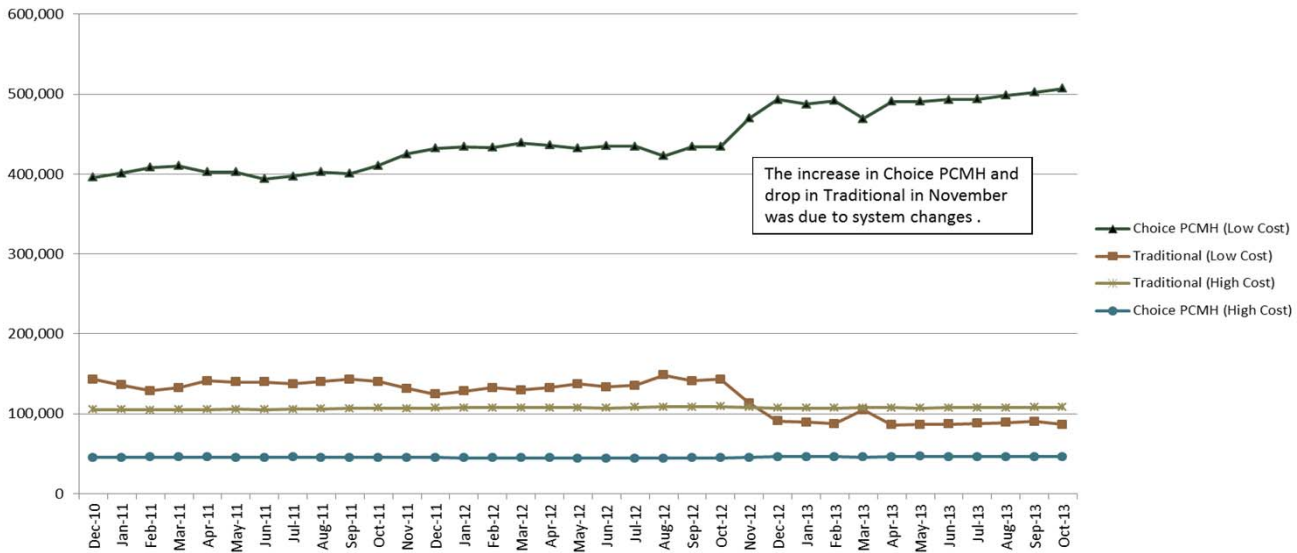
Including Physicians, Physician Assistants and Advance Nurse Practitioners.

*Items shaded above represent a 10% or more increase (green) or decrease (red) from the previous fiscal year's average.

**Decrease in current month's count is due to contract renewal period which is typical during all renewal periods. Hospitals renewal started in March 2013, renewals for Mental Health Providers started in June 2013 and Dentist renewals started in October 2013.

SoonerCare Programs

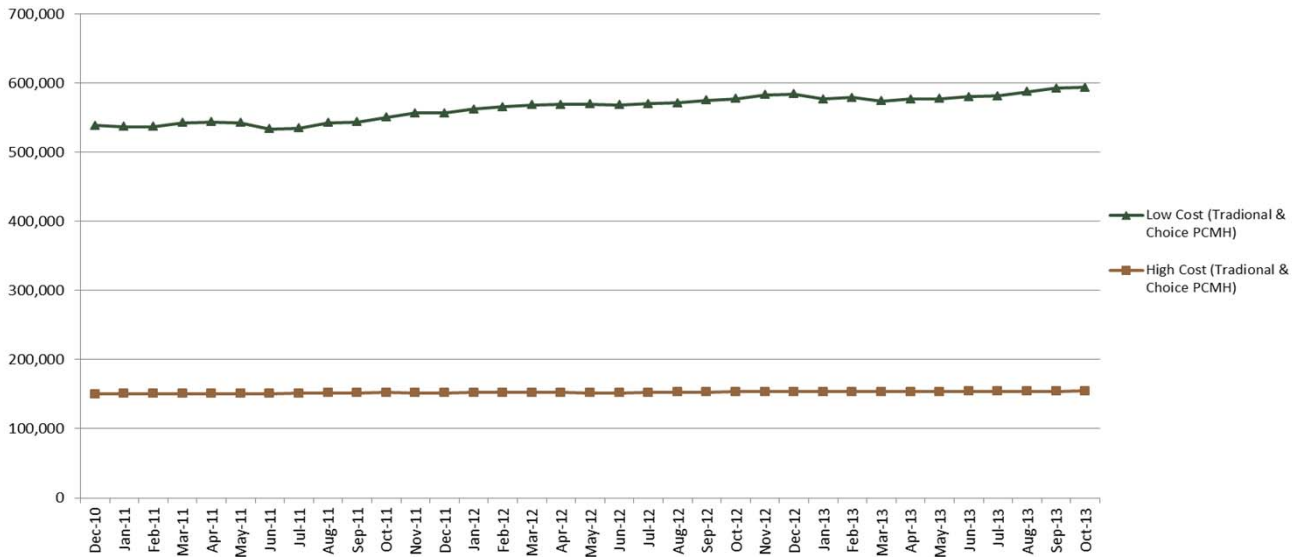
SOONERCARE ENROLLMENT TRENDS - TRADITIONAL & CHOICE PATIENT-CENTERED MEDICAL HOME



Low Cost includes members qualified under Children/Parents (TANF) and Other (DDSD State, PKU, Q1, Refugee, SLMB & STBS). High Cost members qualify under Aged, Blind or Disabled, Oklahoma Cares, TEFRA or a Home and Community-Based Services waiver.

The system changes made newborn enrollment day specific like other Choice members. Before the change, newborns were not enrolled in Choice until the following month if they were enrolled after the 15th of the month. Now there is no delay and they are enrolled in Choice the same month like the newborns enrolled before the 15th of the month and other Choice members. Some members also had delayed enrollment in Choice after selecting a PMP and were not being moved to Choice until the following month. This has also been changed so they go into Choice the following day instead of a month later.

SOONERCARE ENROLLMENT TRENDS - LOW COST & HIGH COST



Low Cost includes members qualified under Children/Parents (TANF) and Other (DDSD State, PKU, Q1, Refugee, SLMB & STBS). High Cost members qualify under Aged, Blind or Disabled, Oklahoma Cares, TEFRA or a Home and Community-Based Services waiver.

PROPOSED OHCA BOARD MEETINGS/LOCATIONS - 2014

JANUARY						
S	M	T	W	T	F	S
			1	2	3	4
5	6	7	8	9	10	11
12	13	14	15	16	17	18
19	20	21	22	23	24	25
26	27	28	29	30	31	

January 9, 2014 • 1:00 pm
 Oklahoma Health Care Authority
 2401 NW 23rd, Suite 1-A
 Oklahoma City, Oklahoma

JULY						
S	M	T	W	T	F	S
			1	2	3	4
5	6	7	8	9	10	11
12	13	14	15	16	17	18
19	20	21	22	23	24	25
26	27	28	29	30	31	

February 13, 2014 • 1:00 pm
 Oklahoma Health Care Authority
 2401 NW 23rd, Suite 1-A
 Oklahoma City, Oklahoma

AUGUST						
S	M	T	W	T	F	S
					1	2
3	4	5	6	7	8	9
10	11	12	13	14	15	16
17	18	19	20	21	22	23
24	25	26	27	28	29	30

March 27, 2014 • 1:00 pm
 Oklahoma Health Care Authority
 2401 NW 23rd, Suite 1-A
 Oklahoma City, Oklahoma

April 10, 2014 • Cancelled

FEBRUARY						
S	M	T	W	T	F	S
						1
2	3	4	5	6	7	8
9	10	11	12	13	14	15
16	17	18	19	20	21	22
23	24	25	26	27	28	

MARCH						
S	M	T	W	T	F	S
						1
2	3	4	5	6	7	8
9	10	11	12	13	14	15
16	17	18	19	20	21	22
23	24	25	26	27	28	29
30	31					

May 8, 2014 • 1:00 pm
 Oklahoma Health Care Authority
 2401 NW 23rd, Suite 1-A
 Oklahoma City, Oklahoma

SEPTEMBER						
S	M	T	W	T	F	S
31	1	2	3	4	5	6
7	8	9	10	11	12	13
14	15	16	17	18	19	20
21	22	23	24	25	26	27
28	29	30				

APRIL						
S	M	T	W	T	F	S
			1	2	3	4
5	6	7	8	9	10	11
12	13	14	15	16	17	18
19	20	21	22	23	24	25
26	27	28	29	30		

June 26, 2014 • 1:00 pm
 Oklahoma Health Care Authority
 2401 NW 23rd, Suite 1-A
 Oklahoma City, Oklahoma

July 10, 2014 • Cancelled

OCTOBER						
S	M	T	W	T	F	S
			1	2	3	4
5	6	7	8	9	10	11
12	13	14	15	16	17	18
19	20	21	22	23	24	25
26	27	28	29	30	31	

MAY						
S	M	T	W	T	F	S
				1	2	3
4	5	6	7	8	9	10
11	12	13	14	15	16	17
18	19	20	21	22	23	24
25	26	27	28	29	30	31

August 20, 2014 • Board Meeting • 4:00 pm
August Retreat 21 & 22, 2014 • 8:30 am
 Tulsa, Oklahoma

September 11, 2014 • 1:00 pm
 Oklahoma Health Care Authority
 2401 NW 23rd, Suite 1-A
 Oklahoma City, Oklahoma

NOVEMBER						
S	M	T	W	T	F	S
						1
2	3	4	5	6	7	8
9	10	11	12	13	14	15
16	17	18	19	20	21	22
23	24	25	26	27	28	29

JUNE						
S	M	T	W	T	F	S
1	2	3	4	5	6	7
8	9	10	11	12	13	14
15	16	17	18	19	20	21
22	23	24	25	26	27	28
29	30					

October 9, 2014 • 1:00 pm
 Oklahoma Health Care Authority
 2401 NW 23rd, Suite 1-A
 Oklahoma City, Oklahoma

DECEMBER						
S	M	T	W	T	F	S
30	1	2	3	4	5	6
7	8	9	10	11	12	13
14	15	16	17	18	19	20
21	22	23	24	25	26	27
28	29	30	31			

November 13, 2014 • 1:00 pm
 Oklahoma Health Care Authority
 2401 NW 23rd, Suite 1-A
 Oklahoma City, Oklahoma

December 11, 2014 • 1:00 pm
 Tulsa

*Dates in Red are Proposed Board Dates

*Physical Location Yet To Be Determined for Dates with City, but No Address