

State standard devices



OKLAHOMA

State standard devices are established to keep Oklahoma secure.

Standard iPhones:

iPhone 14 | iPhone 14 Plus | iPhone 14 Pro | iPhone 14 Pro Max | iPhone 13 | iPhone 13 Plus | iPhone 13 Pro | iPhone 13 Pro Max | iPhone 13 Mini | iPhone 12 | iPhone 12 Plus | iPhone 12 Pro | iPhone 12 Pro Max | iPhone 12 Mini | iPhone 11 | iPhone 11 Plus | iPhone 11 Pro | iPhone 11 Pro Max | iPhone XS | iPhone XS Max | iPhone XR | iPhone SE 2nd Generation | iPhone SE 3rd Generation

Standard iPads:

iPad Air

iPad Air 3rd Generation | iPad Air 4th Generation
iPad Air 5th Generation

iPad Mini

iPad Mini 5th Generation
iPad Mini 6th Generation

"Standard" iPad (not mini, air or pro)

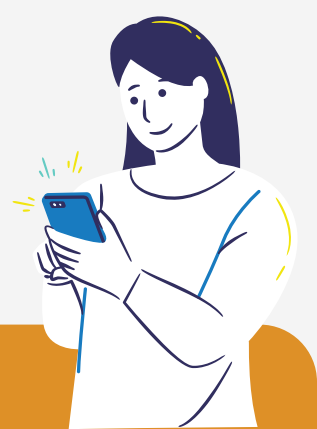
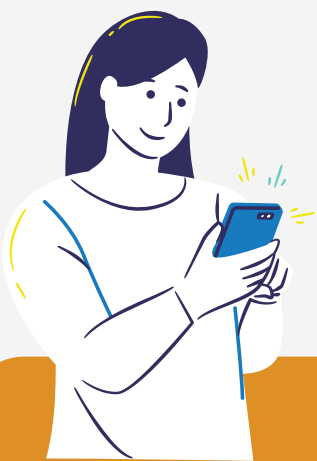
iPad 10th Generation | iPad 9th Generation | iPad 8th Generation |
iPad 7th Generation | iPad 6th Generation

iPad Pro

iPad Pro 12.9" 2nd Generation | iPad Pro 12.9" 3rd Generation
iPad Pro 12.9" 4th Generation | iPad Pro 12.9" 5th Generation
iPad Pro 12.9" 6th Generation | iPad Pro 11" 2nd Generation
iPad Pro 11" 3rd Generation | iPad Pro 11" 4th Generation
iPad Pro 10.5" 1st Generation



The mobile device standard for the State of Oklahoma is Apple iOS devices. Apple iOS devices are the only mobile devices authorized to authenticate to the State network and access resources. If you have a device that does not meet state standards, please upgrade to a new device as soon as possible.



State standard devices



OKLAHOMA

State standard devices are established to keep Oklahoma secure.

Standard Mac's:

MacBook Pro

MacBook Pro (16-inch, 2023) | MacBook Pro (14-inch, 2023) | MacBook Pro (13-inch, M2, 2022) | MacBook Pro (16-inch, 2021) | MacBook Pro (14-inch, 2021) | MacBook Pro (13-inch, M1, 2020) | MacBook Pro (13-inch, 2020, Two Thunderbolt 3 ports) | MacBook Pro (13-inch, 2020, Four Thunderbolt 3 ports) | MacBook Pro (16-inch, 2019) | MacBook Pro (13-inch, 2019, Two Thunderbolt 3 ports) | MacBook Pro (15-inch, 2019) | MacBook Pro (13-inch, 2019, Four Thunderbolt 3 ports) | MacBook Pro (15-inch, 2018) | MacBook Pro (13-inch, 2018, Four Thunderbolt 3 ports) | MacBook Pro (15-inch, 2017) | MacBook Pro (13-inch, 2017, Four Thunderbolt 3 ports) | MacBook Pro (13-inch, 2017, Two Thunderbolt 3 ports)

MacBook "Standard"

MacBook (Retina, 12-inch, 2017)

MacBook Air

MacBook Air (15-inch, M2, 2023) | MacBook Air (M2, 2022) | MacBook Air (M1, 2020) | MacBook Air (Retina, 13-inch, 2020) | MacBook Air (Retina, 13-inch, 2019) | MacBook Air (Retina, 13-inch, 2018)

iMac Pro

iMac Pro (2017)

iMac

iMac (24-inch, M1, 2021) | iMac (Retina 5K, 27-inch, 2020) | iMac (Retina 5K, 27-inch, 2019) | iMac (Retina 4K, 21.5-inch, 2019) | iMac (Retina 5K, 27-inch, 2017) | iMac (Retina 4K, 21.5-inch, 2017) | iMac (21.5-inch, 2017)

Mac Mini

Mac mini (2023) | Mac mini (M1, 2020) | Mac mini (2018)

Mac Studio

Mac Studio (2023) | Mac Studio (2022)

Mac Pro

Mac Pro (2023) | Mac Pro (2019)



The mobile device standard for the State of Oklahoma is Apple iOS devices. Apple iOS devices are the only mobile devices authorized to authenticate to the State network and access resources. If you have a device that does not meet state standards, please upgrade to a new device as soon as possible.



State standard devices



OKLAHOMA

State standard devices are established to keep Oklahoma secure.

State Standard Devices Recently Dropped from Support:

iPads:

“Standard” iPad 5th Generation | iPad Pro 12.9" 1st Generation | iPad Pro 9.7" 1st Generation

iPhones:

iPhone X | iPhone 8 | iPhone 8 Plus | iPhone SE 1st Generation

Mac's:

MacBook Air 11" (early 2014 and older) | MacBook Air 13" (early 2014 and older) | MacBook Pro 13" (mid 2014 and older) | MacBook Pro 15" (mid 2014 and older) | iMac 27"(late 2013 and older) | iMac 21.5" (late 2013 and older) | Mac Mini (2012 and older) | Mac Mini Server (2012 and older) | Mac Pro (2010 and older)



The mobile device standard for the State of Oklahoma is Apple iOS devices. Apple iOS devices are the only mobile devices authorized to authenticate to the State network and access resources. If you have a device that does not meet state standards, please upgrade to a new device as soon as possible.

